

JCI

The Journal of
Clinical Investigation

January 2000

Volume 105 | Number 1

<http://www.jci.org>

Published since 1924

The publication of the American Society
for Clinical Investigation

ON THE COVER

**ENaC mislocalized in Liddle's
syndrome**

..... p. 45

**Reverting vascular smooth muscle
cell hypertrophy**

..... p. 21

PERSPECTIVE SERIES

Targets for cancer therapy

..... p. 3

Go to section:

[Perspectives](#) - 2 in issue

[Commentaries](#) - 2 in issue

[Research Articles](#) - 10 in issue

[Erratum](#)

15 total articles

Perspectives

Lessons learned from the development of an Abl tyrosine kinase inhibitor for chronic myelogenous leukemia (/articles/view/9083)

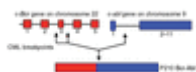
[Brian J. Druker, Nicholas B. Lydon \(/articles/view/9083\)](#)

[Brian J. Druker, Nicholas B. Lydon](#)

Published January 1, 2000

Citation Information: *J Clin Invest.* 2000;[105\(1\)](#) (<http://www.jci.org/105/1>):3-7. doi:[10.1172/JCI9083](https://doi.org/10.1172/JCI9083) (<http://dx.doi.org/10.1172/JCI9083>).

View: [Text \(/articles/view/9083\)](#) | [PDF \(/articles/view/9083/pdf\)](#)



<http://www.jci.org/articles/view/9083/figure/1>

Anticancer drug targets: growth factors and growth factor signaling (/articles/view/9084)

[Jackson B. Gibbs \(/articles/view/9084\)](#)

[Jackson B. Gibbs](#)

Published January 1, 2000

Citation Information: *J Clin Invest.* 2000;[105\(1\)](#) (<https://www.jci.org/105/1>):9-13. doi:[10.1172/JCI9084](https://doi.org/10.1172/JCI9084) (<http://dx.doi.org/10.1172/JCI9084>).

View: [Text \(/articles/view/9084\)](#) | [PDF \(/articles/view/9084/pdf\)](#)

Commentaries

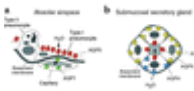
Aquaporins and the respiratory system: advice for a lung investigator (/articles/view/9023)

[Landon S. King, Søren Nielsen, Peter Agre \(/articles/view/9023\)](#)

[Landon S. King, Søren Nielsen, Peter Agre](#)

Published January 1, 2000

Citation Information: *J Clin Invest.* 2000;[105\(1\)](#) (<http://www.jci.org/105/1>):15-16. doi:[10.1172/JCI9023](https://doi.org/10.1172/JCI9023)



<http://www.jci.org/articles/view/9023/figure/1>

Circulating endothelial precursors: mystery, reality, and promise (/articles/view/8774)

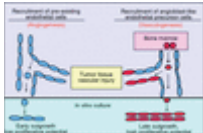
[Shahin Rafii \(/articles/view/8774\)](/articles/view/8774)

[Shahin Rafii](#)

Published January 1, 2000

Citation Information: *J Clin Invest.* 2000;105(1) (<http://www.jci.org/105/1>):17-19. doi:10.1172/JCI8774 (<http://dx.doi.org/10.1172/JCI8774>).

View: [Text \(/articles/view/8774\)](/articles/view/8774) | [PDF \(/articles/view/8774/pdf\)](/articles/view/8774/pdf)



<http://www.jci.org/articles/view/8774/figure/1>

Research Articles

Elastase and matrix metalloproteinase inhibitors induce regression, and tenascin-C antisense prevents progression, of vascular disease (/articles/view/6539)

[Kyle Northcote Cowan, Peter Lloyd Jones, Marlene Rabinovitch \(/articles/view/6539\)](/articles/view/6539)

[Kyle Northcote Cowan, Peter Lloyd Jones, Marlene Rabinovitch](#)

Published January 1, 2000

Citation Information: *J Clin Invest.* 2000;105(1) (<https://www.jci.org/105/1>):21-34. doi:10.1172/JCI6539 (<http://dx.doi.org/10.1172/JCI6539>).

View: [Text \(/articles/view/6539\)](/articles/view/6539) | [PDF \(/articles/view/6539/pdf\)](/articles/view/6539/pdf)



<https://www.jci.org/articles/view/6539/figure/1>

Targeting of the chemokine receptor CCR1 suppresses development of acute and chronic cardiac allograft rejection (/articles/view/8126)

[Wei Gao ... Craig J. Gerard, Wayne W. Hancock \(/articles/view/8126\)](/articles/view/8126)

[Wei Gao ... Craig J. Gerard, Wayne W. Hancock](#)

Published January 1, 2000

Citation Information: *J Clin Invest.* 2000;105(1) (<https://www.jci.org/105/1>):35-44. doi:10.1172/JCI8126 (<http://dx.doi.org/10.1172/JCI8126>).

View: [Text \(/articles/view/8126\)](/articles/view/8126) | [PDF \(/articles/view/8126/pdf\)](/articles/view/8126/pdf)



<https://www.jci.org/articles/view/8126/figure/1>

Liddle's syndrome mutations disrupt cAMP-mediated translocation of the epithelial Na⁺

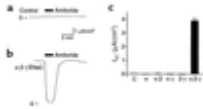
[Peter M. Snyder \(/articles/view/7869\)](/articles/view/7869)

[Peter M. Snyder](#)

Published January 1, 2000

Citation Information: *J Clin Invest.* 2000;[105\(1\)](https://www.jci.org/105/1) (<https://www.jci.org/105/1>):45-53. doi:[10.1172/JCI7869](https://doi.org/10.1172/JCI7869) (<http://dx.doi.org/10.1172/JCI7869>).

View: [Text \(/articles/view/7869\)](/articles/view/7869) | [PDF \(/articles/view/7869/pdf\)](/articles/view/7869/pdf)



[_\(/articles/view/7869/figure/1\)](https://www.jci.org/articles/view/7869/figure/1)

[In vivo expression of a new hepatitis B virus protein encoded by a spliced RNA \(/articles/view/8098\)](/articles/view/8098)

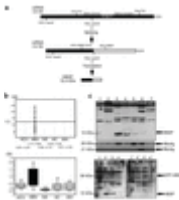
[Patrick Soussan ... Christian Brechot, Dina Kremsdorf \(/articles/view/8098\)](/articles/view/8098)

[Patrick Soussan ... Christian Brechot, Dina Kremsdorf](#)

Published January 1, 2000

Citation Information: *J Clin Invest.* 2000;[105\(1\)](https://www.jci.org/105/1) (<https://www.jci.org/105/1>):55-60. doi:[10.1172/JCI8098](https://doi.org/10.1172/JCI8098) (<http://dx.doi.org/10.1172/JCI8098>).

View: [Text \(/articles/view/8098\)](/articles/view/8098) | [PDF \(/articles/view/8098/pdf\)](/articles/view/8098/pdf)



[_\(/articles/view/8098/figure/1\)](https://www.jci.org/articles/view/8098/figure/1)

[CD4⁺ T helper cells engineered to produce latent TGF- \$\beta\$ 1 reverse allergen-induced airway hyperreactivity and inflammation \(/articles/view/7589\)](/articles/view/7589)

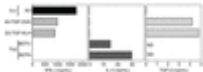
[Gesine Hansen ... Rosemarie H. DeKruyff, Dale T. Umetsu \(/articles/view/7589\)](/articles/view/7589)

[Gesine Hansen ... Rosemarie H. DeKruyff, Dale T. Umetsu](#)

Published January 1, 2000

Citation Information: *J Clin Invest.* 2000;[105\(1\)](https://www.jci.org/105/1) (<https://www.jci.org/105/1>):61-70. doi:[10.1172/JCI7589](https://doi.org/10.1172/JCI7589) (<http://dx.doi.org/10.1172/JCI7589>).

View: [Text \(/articles/view/7589\)](/articles/view/7589) | [PDF \(/articles/view/7589/pdf\)](/articles/view/7589/pdf)



[_\(/articles/view/7589/figure/1\)](https://www.jci.org/articles/view/7589/figure/1)

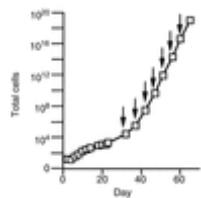
[Origins of circulating endothelial cells and endothelial outgrowth from blood \(/articles/view/8071\)](/articles/view/8071)

[Yi Lin, Daniel J. Weisdorf, Anna Solovey, Robert P. Hebbel \(/articles/view/8071\)](/articles/view/8071)

[Yi Lin, Daniel J. Weisdorf, Anna Solovey, Robert P. Hebbel](#)

Published January 1, 2000

View: [Text \(/articles/view/8071\)](/articles/view/8071) | [PDF \(/articles/view/8071/pdf\)](/articles/view/8071/pdf)



<https://www.jci.org/articles/view/8071/figure/1>

[Salmonella typhimurium induces epithelial IL-8 expression via Ca²⁺-mediated activation of the NF- \$\kappa\$ B pathway \(/articles/view/8066\)](/articles/view/8066)

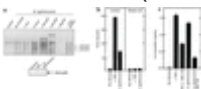
[Andrew T. Gewirtz ... James L. Madara, Andrew S. Neish \(/articles/view/8066\)](/articles/view/8066)

[Andrew T. Gewirtz ... James L. Madara, Andrew S. Neish](/articles/view/8066)

Published January 1, 2000

Citation Information: *J Clin Invest.* 2000;105(1) (<https://www.jci.org/105/1>):79-92. doi:10.1172/JCI8066 (<http://dx.doi.org/10.1172/JCI8066>).

View: [Text \(/articles/view/8066\)](/articles/view/8066) | [PDF \(/articles/view/8066/pdf\)](/articles/view/8066/pdf)



<https://www.jci.org/articles/view/8066/figure/1>

[Lung fluid transport in aquaporin-5 knockout mice \(/articles/view/8258\)](/articles/view/8258)

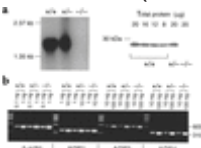
[Tonghui Ma, Norimasa Fukuda, Yuanlin Song, Michael A. Matthay, A.S. Verkman \(/articles/view/8258\)](/articles/view/8258)

[Tonghui Ma, Norimasa Fukuda, Yuanlin Song, Michael A. Matthay, A.S. Verkman](/articles/view/8258)

Published January 1, 2000

Citation Information: *J Clin Invest.* 2000;105(1) (<https://www.jci.org/105/1>):93-100. doi:10.1172/JCI8258 (<http://dx.doi.org/10.1172/JCI8258>).

View: [Text \(/articles/view/8258\)](/articles/view/8258) | [PDF \(/articles/view/8258/pdf\)](/articles/view/8258/pdf)



<https://www.jci.org/articles/view/8258/figure/1>

[Chemotaxis of primitive hematopoietic cells in response to stromal cell-derived factor-1 \(/articles/view/7954\)](/articles/view/7954)

[Deog-Yeon Jo, Shahin Rafii, Tsuneyoshi Hamada, Malcolm A.S. Moore \(/articles/view/7954\)](/articles/view/7954)

[Deog-Yeon Jo, Shahin Rafii, Tsuneyoshi Hamada, Malcolm A.S. Moore](/articles/view/7954)

Published January 1, 2000

Citation Information: *J Clin Invest.* 2000;105(1) (<https://www.jci.org/105/1>):101-111. doi:10.1172/JCI7954 (<http://dx.doi.org/10.1172/JCI7954>).

View: [Text \(/articles/view/7954\)](/articles/view/7954) | [PDF \(/articles/view/7954/pdf\)](/articles/view/7954/pdf)

Explore Litigation Insights

Docket Alarm provides insights to develop a more informed litigation strategy and the peace of mind of knowing you're on top of things.

Real-Time Litigation Alerts



Keep your litigation team up-to-date with **real-time alerts** and advanced team management tools built for the enterprise, all while greatly reducing PACER spend.

Our comprehensive service means we can handle Federal, State, and Administrative courts across the country.

Advanced Docket Research



With over 230 million records, Docket Alarm's cloud-native docket research platform finds what other services can't. Coverage includes Federal, State, plus PTAB, TTAB, ITC and NLRB decisions, all in one place.

Identify arguments that have been successful in the past with full text, pinpoint searching. Link to case law cited within any court document via Fastcase.

Analytics At Your Fingertips



Learn what happened the last time a particular judge, opposing counsel or company faced cases similar to yours.

Advanced out-of-the-box PTAB and TTAB analytics are always at your fingertips.

API

Docket Alarm offers a powerful API (application programming interface) to developers that want to integrate case filings into their apps.

LAW FIRMS

Build custom dashboards for your attorneys and clients with live data direct from the court.

Automate many repetitive legal tasks like conflict checks, document management, and marketing.

FINANCIAL INSTITUTIONS

Litigation and bankruptcy checks for companies and debtors.

E-DISCOVERY AND LEGAL VENDORS

Sync your system to PACER to automate legal marketing.