

[54] **METHOD AND SYSTEM FOR DISTRIBUTED CONTROL IN WIRELESS CELLULAR AND PERSONAL COMMUNICATION SYSTEMS**

[75] Inventors: **Thomas F. La Porta**, Thornwood, N.Y.; **Ramachandran Ramjee**, Matawan; **Malathi Veeraraghavan**, Atlantic Highlands, both of N.J.

[73] Assignee: **Lucent Technologies Inc.**, Murray Hill, N.J.

[21] Appl. No.: **324,427**

[22] Filed: **Oct. 17, 1994**

[51] Int. Cl.<sup>6</sup> ..... **H04M 11/00; H04Q 7/22**

[52] U.S. Cl. .... **370/312; 370/331; 370/338; 370/390; 370/396; 370/522; 455/433**

[58] **Field of Search** ..... 379/58, 59, 60, 379/63, 93, 94, 157, 158, 165, 201; 455/33.1, 33.2, 53.1, 54.1, 54.2, 56.1; 370/289, 270, 312, 328, 329, 331, 338, 357, 360, 384, 385, 389, 390, 395, 396, 400, 401, 428, 522

[56] **References Cited**

**U.S. PATENT DOCUMENTS**

5,181,200	1/1993	Harrison	370/95.1
5,278,890	1/1994	Beeson, Jr. et al.	379/57
5,319,699	6/1994	Kerihuel et al.	379/58
5,329,573	7/1994	Chang et al.	379/58
5,343,512	8/1994	Wang et al.	379/59
5,353,340	10/1994	Kunz	379/60
5,361,396	11/1994	Onoe et al.	455/56.1
5,434,852	7/1995	La Porta et al.	370/58.2
5,473,679	12/1995	La Porta et al.	379/201
5,497,412	3/1996	Lannen et al.	379/60

**OTHER PUBLICATIONS**

La Porta, T.F. and Veeraraghavan, M., "Description of a Functional Signaling Architecture for Broadband Networks," Reprinted from IEEE Communication Society IEEE Global Telecommunications Society, Nov. 29-Dec. 2, 1993, pp. 1012-1016.

Mohan, S., and Jain, R., "North American and European Standards for Mobile Communications. Two User Location Strategies for Personal Communications Services," IEEE Personal Communications, First Quarter 1994, pp. 42-50.

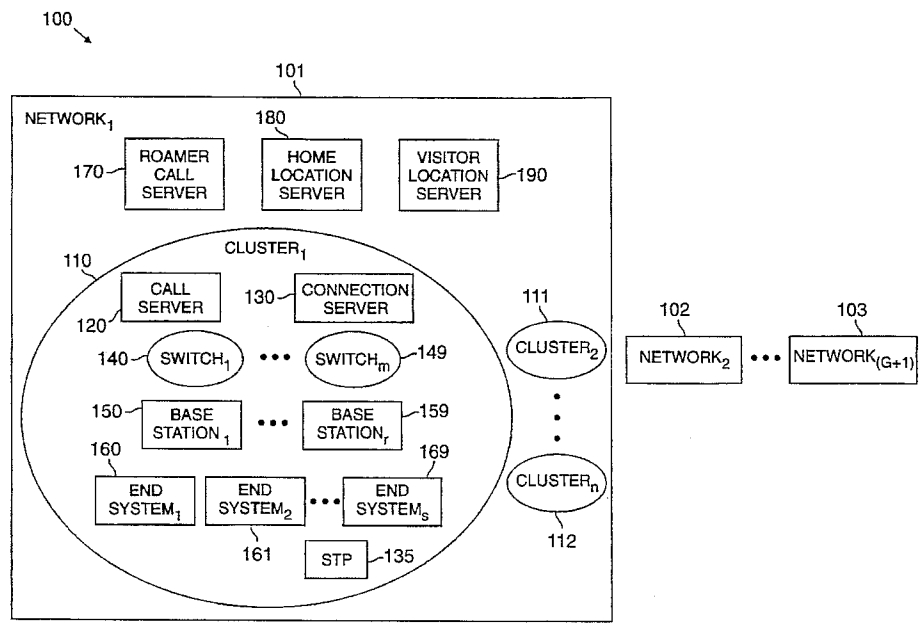
Veeraraghavan, M., and La Porta, T.F., "Object-oriented Analysis of Signalling and Control in Broadband Networks." International Journal of Communication Systems, vol. 7, 1994, by John Wiley & Sons, Ltd., pp. 131-147.

Primary Examiner—Alpus H. Hsu

[57] **ABSTRACT**

A system for distributed control in wireless cellular and personal communication systems includes separate servers for performing call control and connection control functions, thereby obviating the need for a mobile switching or other switch to be anchored for the duration of a call. During a registration procedure, visiting location servers track only roaming mobiles, rather than tracking both roaming mobiles as well as mobiles located in their home network. Direct signalling links between servers and base stations, or other servers, located in different networks allow roaming mobiles to contact their home networks for service at all times, thereby obviating the need for passing signalling information for mobiles when they are not involved in a call. The use of multicast signalling with asynchronous transfer mode switches, permits specified channel control functions to take place concurrently in channel servers associated with base station and switches that form a segment of the route for a call. Similarly, specified call control functions are performed concurrently with mobile location functions, thereby decreasing the delays in setting up a call.

**20 Claims, 12 Drawing Sheets**



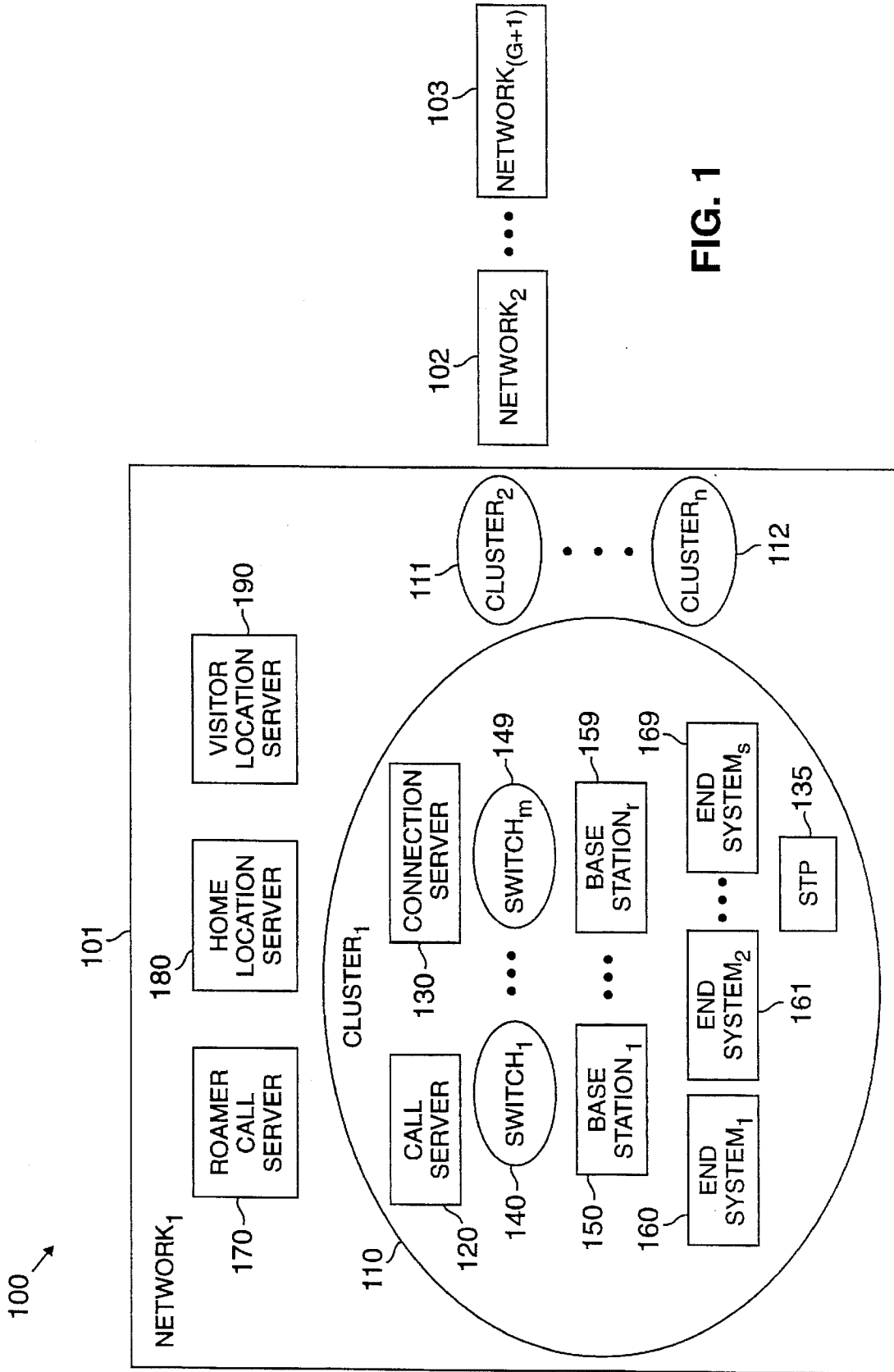


FIG. 1

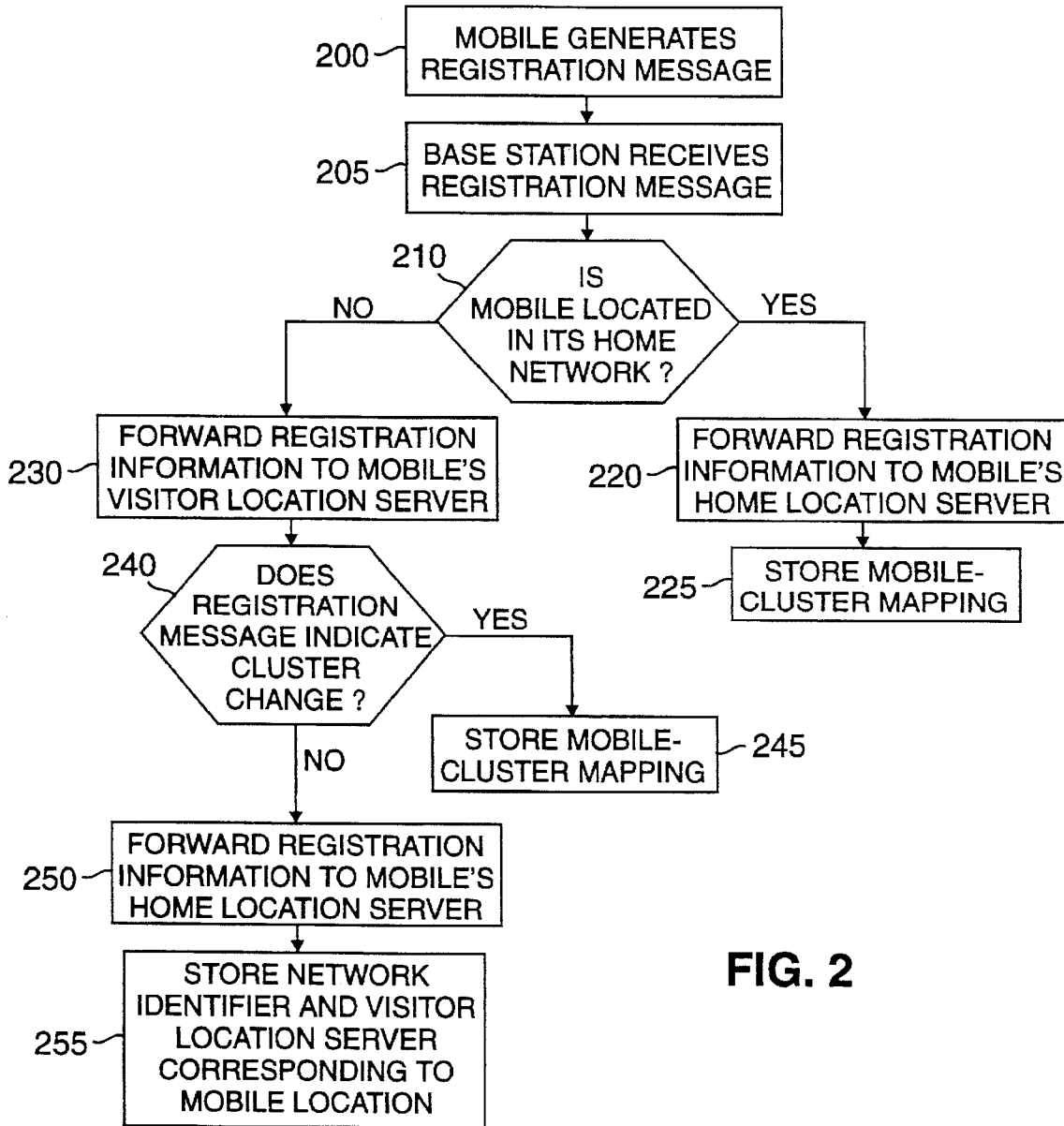
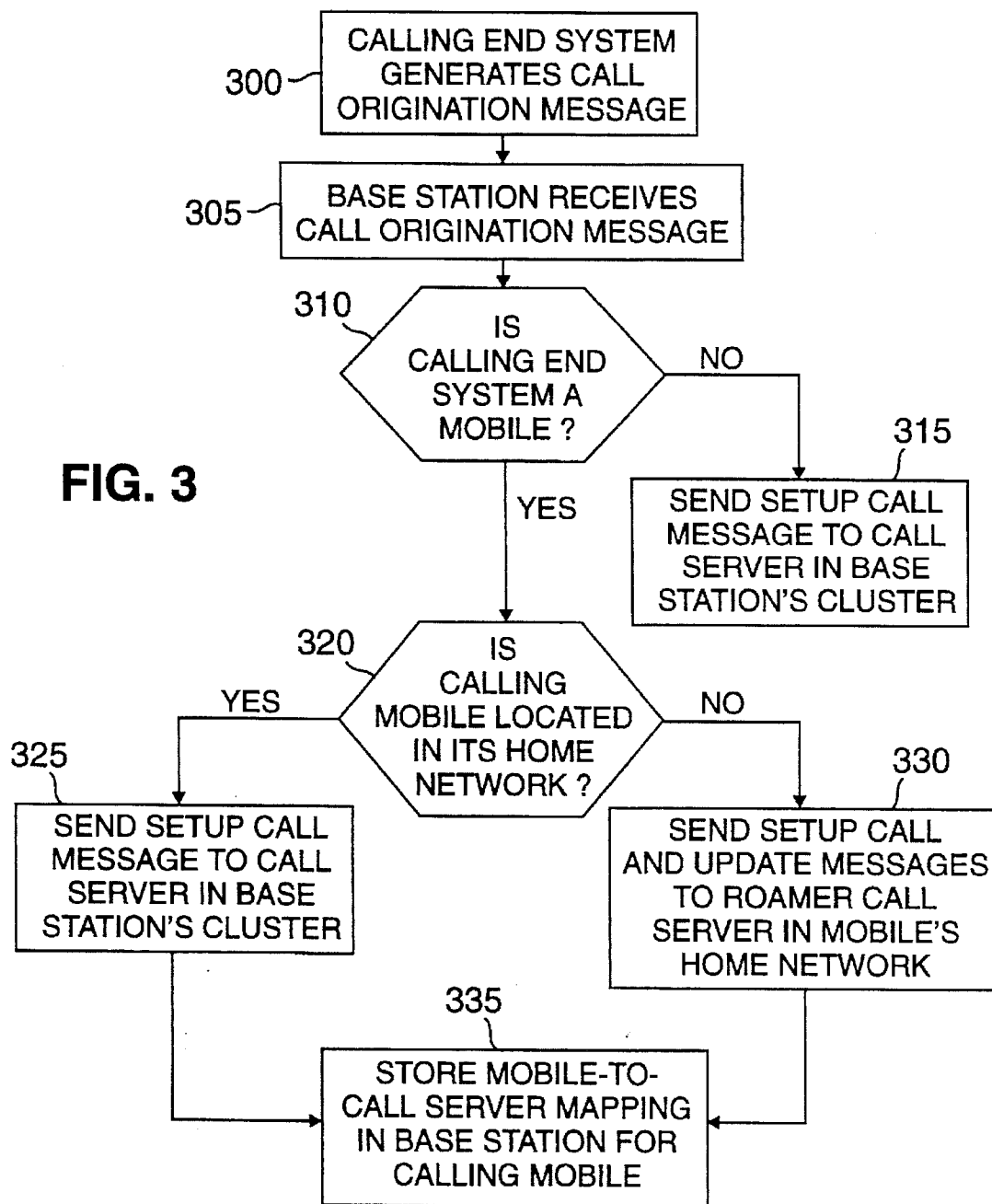


FIG. 2

FIG. 3



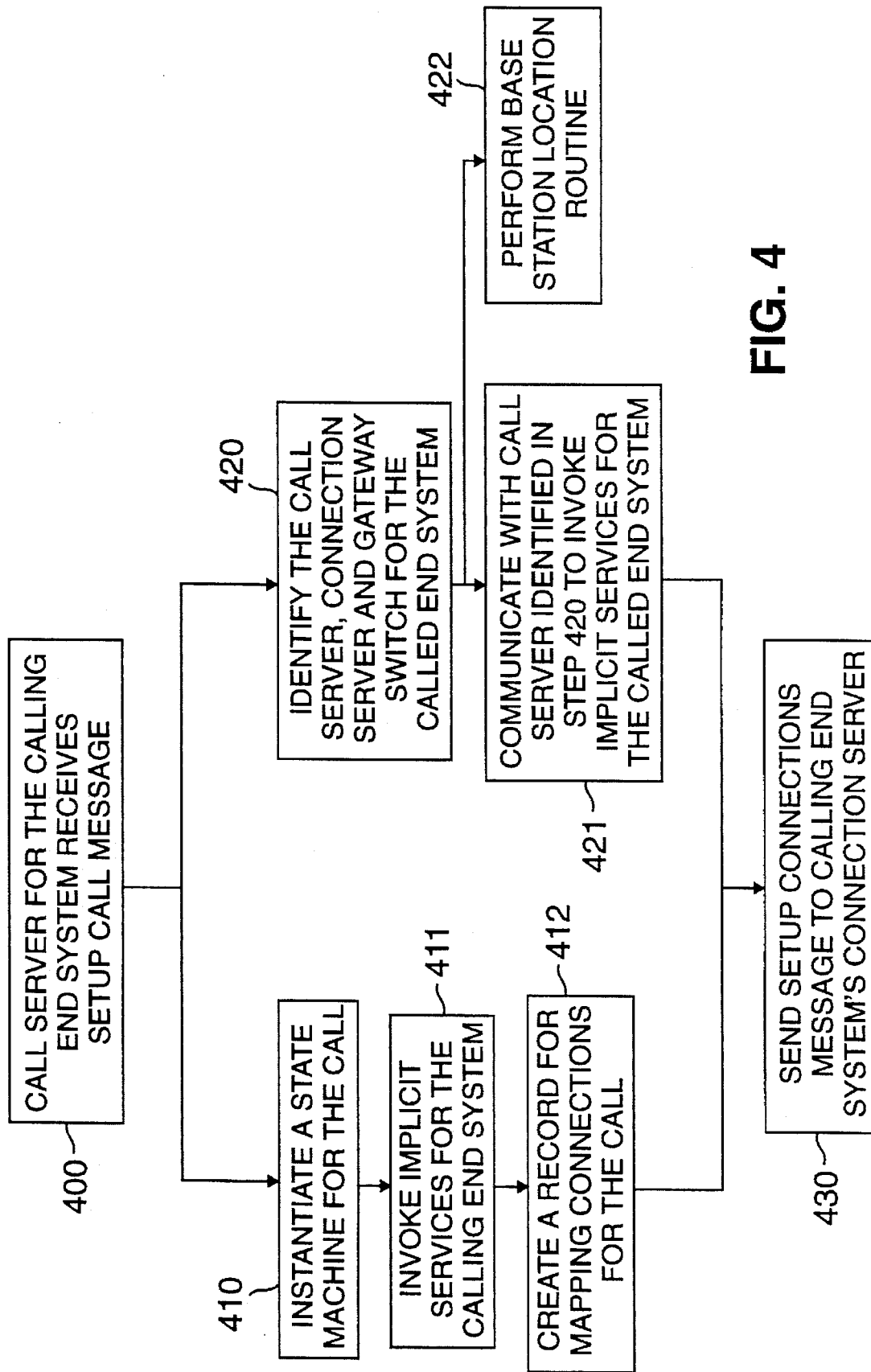


FIG. 4

# Explore Litigation Insights

Docket Alarm provides insights to develop a more informed litigation strategy and the peace of mind of knowing you're on top of things.

## Real-Time Litigation Alerts



Keep your litigation team up-to-date with **real-time alerts** and advanced team management tools built for the enterprise, all while greatly reducing PACER spend.

Our comprehensive service means we can handle Federal, State, and Administrative courts across the country.

## Advanced Docket Research



With over 230 million records, Docket Alarm's cloud-native docket research platform finds what other services can't. Coverage includes Federal, State, plus PTAB, TTAB, ITC and NLRB decisions, all in one place.

Identify arguments that have been successful in the past with full text, pinpoint searching. Link to case law cited within any court document via Fastcase.

## Analytics At Your Fingertips



Learn what happened the last time a particular judge, opposing counsel or company faced cases similar to yours.

Advanced out-of-the-box PTAB and TTAB analytics are always at your fingertips.

## API

Docket Alarm offers a powerful API (application programming interface) to developers that want to integrate case filings into their apps.

## LAW FIRMS

Build custom dashboards for your attorneys and clients with live data direct from the court.

Automate many repetitive legal tasks like conflict checks, document management, and marketing.

## FINANCIAL INSTITUTIONS

Litigation and bankruptcy checks for companies and debtors.

## E-DISCOVERY AND LEGAL VENDORS

Sync your system to PACER to automate legal marketing.