



US005333185A

# United States Patent [19]

[11] Patent Number: **5,333,185**

Burke et al.

[45] Date of Patent: **Jul. 26, 1994**

[54] **SYSTEM FOR PROCESSING CALLING PARTY INFORMATION FOR INTERNATIONAL COMMUNICATIONS SERVICES**

[75] Inventors: **Karen B. Burke, Aberdeen; Luis E. Nieto, East Brunswick; I. Grace Tseng, Middletown, all of N.J.**

[73] Assignee: **AT&T Bell Laboratories, Murray Hill, N.J.**

[21] Appl. No.: **709,047**

[22] Filed: **Jun. 3, 1991**

[51] Int. Cl.<sup>5</sup> ..... **H04M 15/00; H04M 11/00; H04M 1/56; H04M 3/42**

[52] U.S. Cl. .... **379/127; 379/97; 379/112; 379/142; 379/207; 379/246**

[58] Field of Search ..... **379/97, 142, 201, 207, 379/210, 211, 212, 112, 127, 230, 245, 246**

[56] **References Cited**

**U.S. PATENT DOCUMENTS**

4,191,860	3/1980	Weber	379/115
4,555,594	11/1985	Friedes et al.	379/247 X
4,611,094	9/1986	Asmuth et al.	379/201
4,757,267	7/1988	Riskin	379/201 X
5,136,633	8/1992	Tejada et al.	379/97 X
5,136,636	8/1992	Wegrzynowicz	379/97 X

**OTHER PUBLICATIONS**

The Bell System Technical Journal, vol. 56, No. 7, Sep. 1977 (Cover sheet and Index only are attached due to voluminous nature of publication-complete text will be furnished if requested.)

The Bell System Technical Journal, vol. 61, No. 7, Sep.

1982, "800 Service Using SPC Network Capability", Sheinbein et al, pp.1737-1744.

Engineering and Operations in the Bell System, Second Ed. 1982-1983, Sec. 8.5.5, pp. 292-294.

AT&T Technical Journal, vol. 64, No. 6, Part, 2, "The 5ESS Switching System".

Bellcore, TA-NWT-000394, Issue 3, Nov. 1990, "Switching System Requirements for Interexchange Carrier Interconnection Using the Integrated Services Digital Network User Part" (ISDNUP).

J. Bouche et al., "The Freephone Service", Communication & Transmission by SOTELEC, No. 4, 1986, pp. 91-102.

Primary Examiner—James L. Dwyer

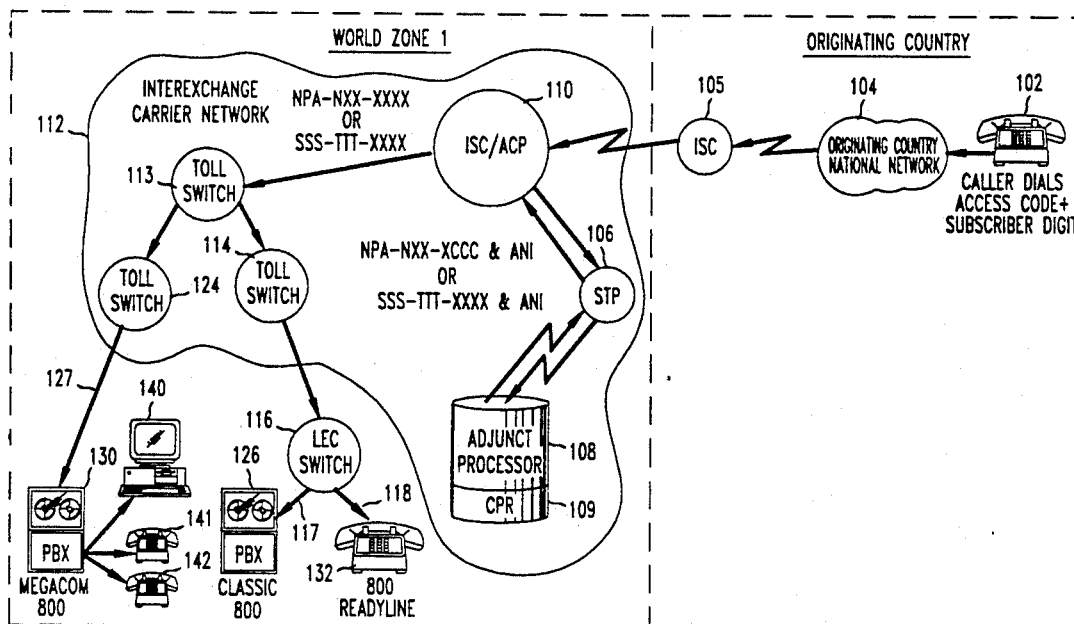
Assistant Examiner—Harry S. Hong

Attorney, Agent, or Firm—Barry H. Freedman

[57] **ABSTRACT**

A system for delivering originating country information for international toll-free calls to a subscriber includes three separate processes. The country code is extracted from billing and routing data forwarded by the caller's national telephone network to the communication switching system of the destination country of the call, the originating country code is then inserted in either the calling party number or the destination number depending on subscriber's terminating arrangement and finally, the originating country code is delivered to the international toll-free subscriber before the call is completed. Once received by the subscriber, the originating country information can be used to tailor customized services for the foreign caller such as directing calls to attendants fluent in caller's language, or mapping the originating country code to the country name for display to attendants.

14 Claims, 4 Drawing Sheets



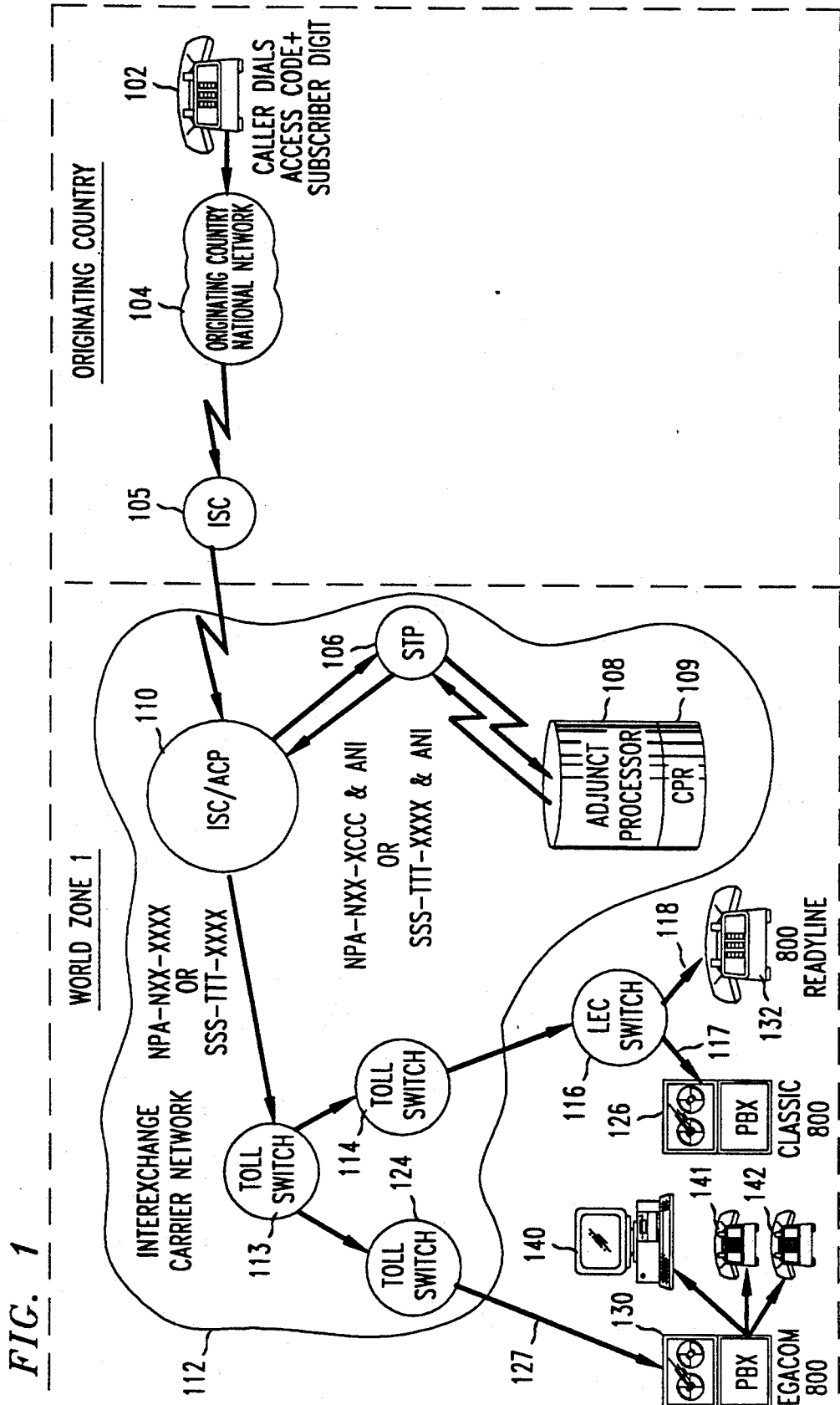


FIG. 2

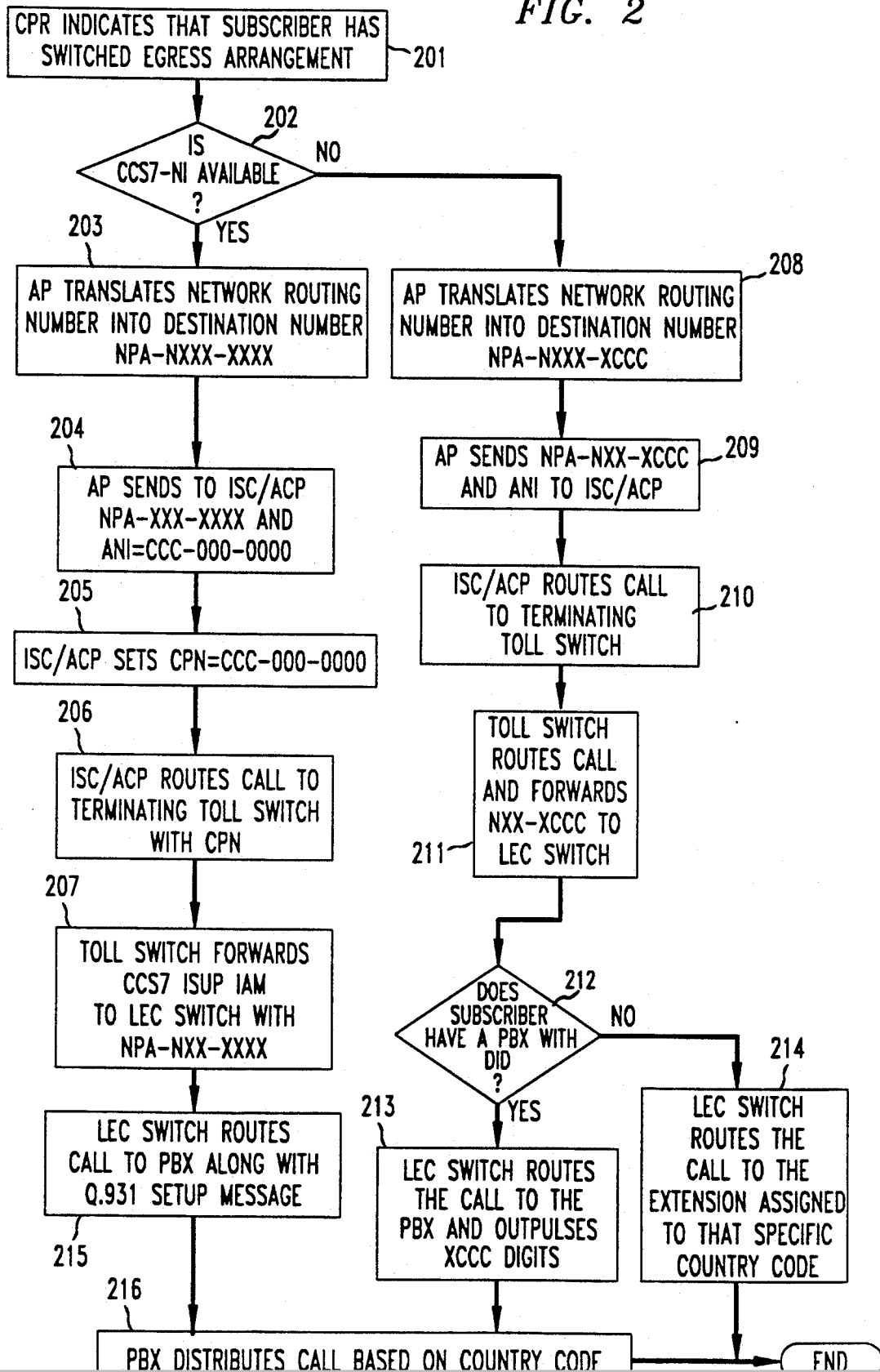
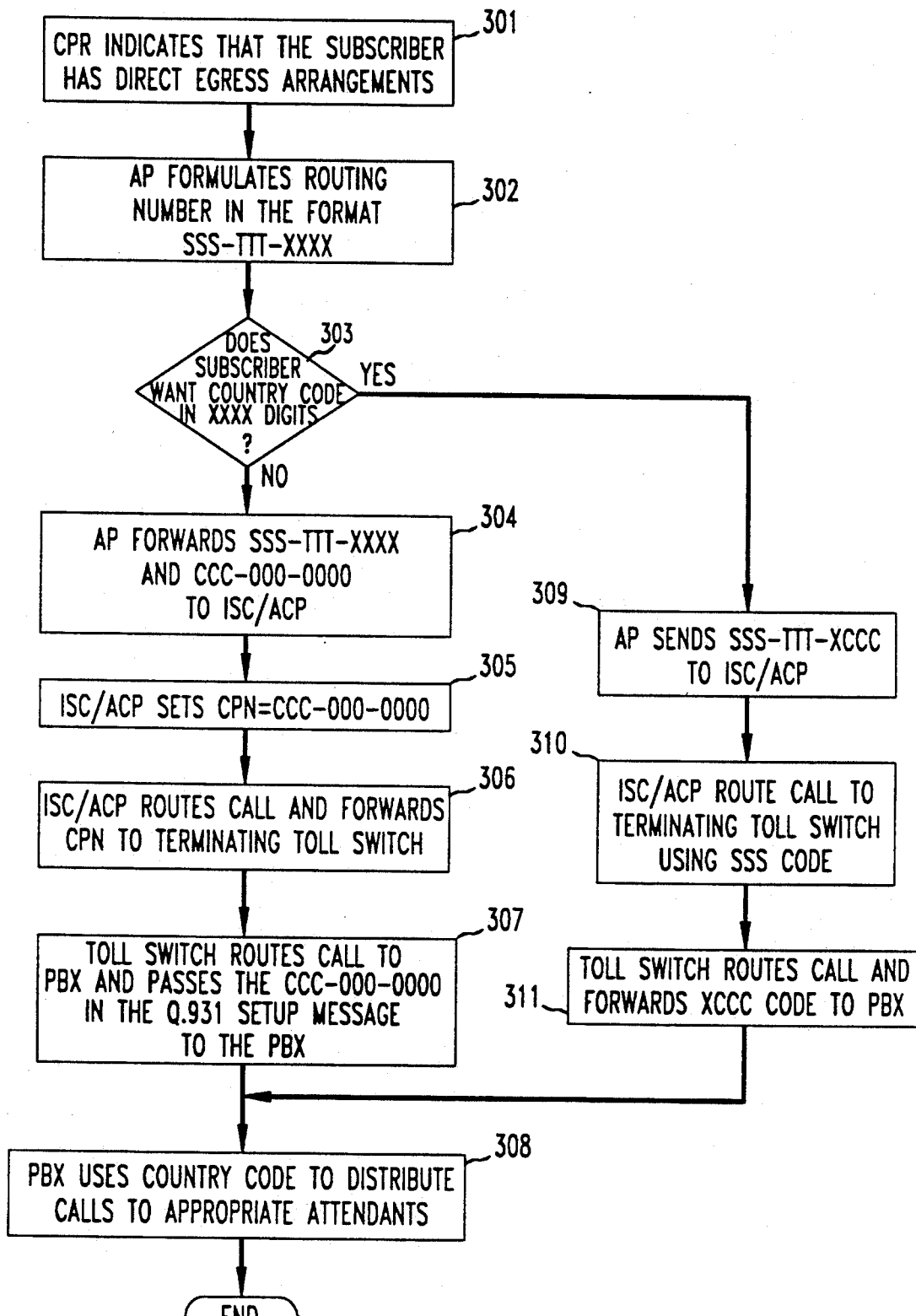


FIG. 3



*FIG. 4*

CPR PARTIAL RECORD LAYOUT			
CUSTOMER RECORD ID	SERVICE TYPE	SERVICE FEATURE INDICATOR	AUTOMATIC NUMBER IDENTIFICATION
} 401	} 402	} 403	} 404

# Explore Litigation Insights

Docket Alarm provides insights to develop a more informed litigation strategy and the peace of mind of knowing you're on top of things.

## Real-Time Litigation Alerts



Keep your litigation team up-to-date with **real-time alerts** and advanced team management tools built for the enterprise, all while greatly reducing PACER spend.

Our comprehensive service means we can handle Federal, State, and Administrative courts across the country.

## Advanced Docket Research



With over 230 million records, Docket Alarm's cloud-native docket research platform finds what other services can't. Coverage includes Federal, State, plus PTAB, TTAB, ITC and NLRB decisions, all in one place.

Identify arguments that have been successful in the past with full text, pinpoint searching. Link to case law cited within any court document via Fastcase.

## Analytics At Your Fingertips



Learn what happened the last time a particular judge, opposing counsel or company faced cases similar to yours.

Advanced out-of-the-box PTAB and TTAB analytics are always at your fingertips.

## API

Docket Alarm offers a powerful API (application programming interface) to developers that want to integrate case filings into their apps.

## LAW FIRMS

Build custom dashboards for your attorneys and clients with live data direct from the court.

Automate many repetitive legal tasks like conflict checks, document management, and marketing.

## FINANCIAL INSTITUTIONS

Litigation and bankruptcy checks for companies and debtors.

## E-DISCOVERY AND LEGAL VENDORS

Sync your system to PACER to automate legal marketing.