

United States Patent [19][11] **Patent Number:** **6,141,433****Moed et al.**[45] **Date of Patent:** **Oct. 31, 2000**

[54] **SYSTEM AND METHOD FOR SEGMENTING IMAGE REGIONS FROM A SCENE LIKELY TO REPRESENT PARTICULAR OBJECTS IN THE SCENE**

[75] Inventors: **Michael C. Moed**, Roswell; **Ralph N. Crabtree**, Atlanta, both of Ga.

[73] Assignee: **NCR Corporation**, Dayton, Ohio

[21] Appl. No.: **08/998,211**

[22] Filed: **Dec. 24, 1997**

Related U.S. Application Data

[60] Provisional application No. 60/050,972, Jun. 19, 1997.

[51] **Int. Cl.**⁷ **G06K 9/00**; G06K 9/46; H04N 9/47

[52] **U.S. Cl.** **382/103**; 382/164; 382/236; 348/143

[58] **Field of Search** 382/103, 164, 382/165, 236, 257; 348/143, 152, 155, 169, 700, 701, 590, 591, 592

[56] References Cited

U.S. PATENT DOCUMENTS

4,497,065	1/1985	Tisdale et al.	382/103
5,034,986	7/1991	Karmann et al.	382/103
5,194,941	3/1993	Grimaldi et al.	348/587
5,301,239	4/1994	Toyama et al.	382/104
5,359,363	10/1994	Kuban et al.	382/103
5,677,733	10/1997	Yoshimura et al.	348/362
5,896,176	4/1999	Das et al.	348/416
5,912,980	6/1999	Hunke	382/103
5,914,748	6/1999	Parulski et al.	348/239

OTHER PUBLICATIONS

Pattern Recognition, "A Survey on Image Segmentation", Fu et al., vol. 13, pp. 3-16, 1981.

Pattern Recognition, "A Review on Image Segmentation Techniques", Pal et al., vol. 26, No. 9, pp. 1277-1294, 1993.

Proc. 11th IAPR International Conference on Pattern Recognition, "Color Segmentation Using Perceptual Attributes", Tseng et al., vol. III, pp. 228-231, 1992.

IEEE, "Fusion of Color and Edge Information for Improved Segmentation and Edge Linking", Saber et al., pp. 2176-2179, 1996.

Pattern Recognition, "A segmentation Algorithm for Color Images", Schettini, Letters 14, pp. 499-506, 1993.

IEEE 10th Conf. Pattern Recognition, "Color Segmentation by Hierarchical Connected Components Analysis with Image Enhancement by Symmetric Neighborhood Filters", pp. 796-802, 1990.

Primary Examiner—Amelia Au

Assistant Examiner—Mehrdad Dastouri

Attorney, Agent, or Firm—Needle & Rosenberg

[57] ABSTRACT

A system and method for extracting image information from a video frame for regions of a the video frame that likely are objects of interest in a scene. An initial region set is generated by comparing luminance image information and color image information of a video frame with luminance image information and color image information of a background image for the scene. A high confidence region set is generated comprising regions from the initial based upon edge information of the regions and edge information in the background image. A final region set is generated by combining one or more regions in the high confidence region set if such combinations satisfy predetermined criteria, including size, region proximity and morphological region dilation.

38 Claims, 9 Drawing Sheets

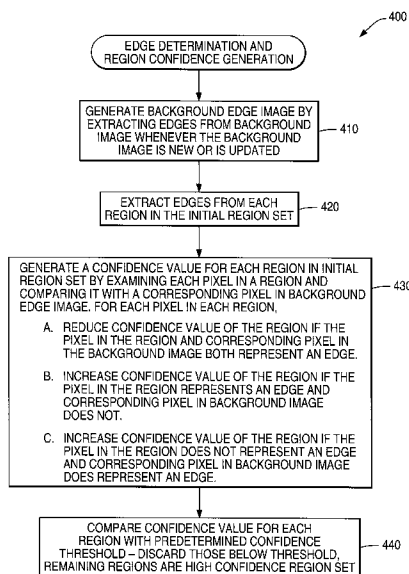


FIG. 1

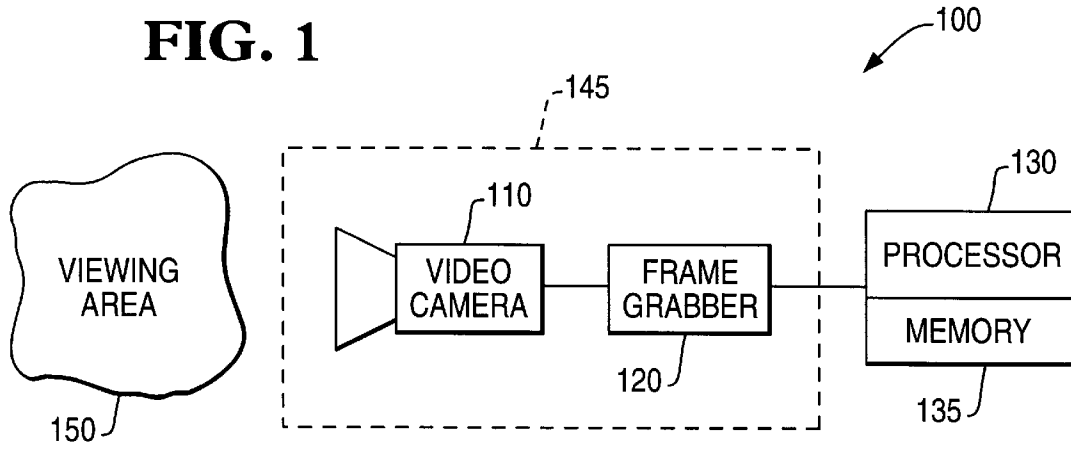


FIG. 2

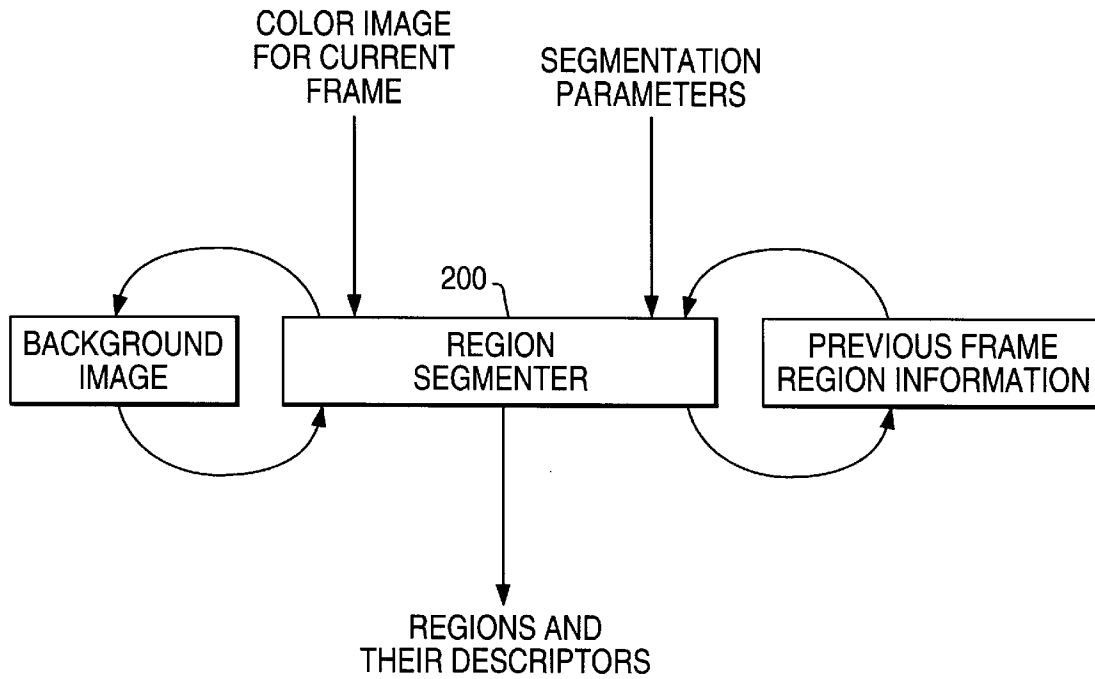


FIG. 3

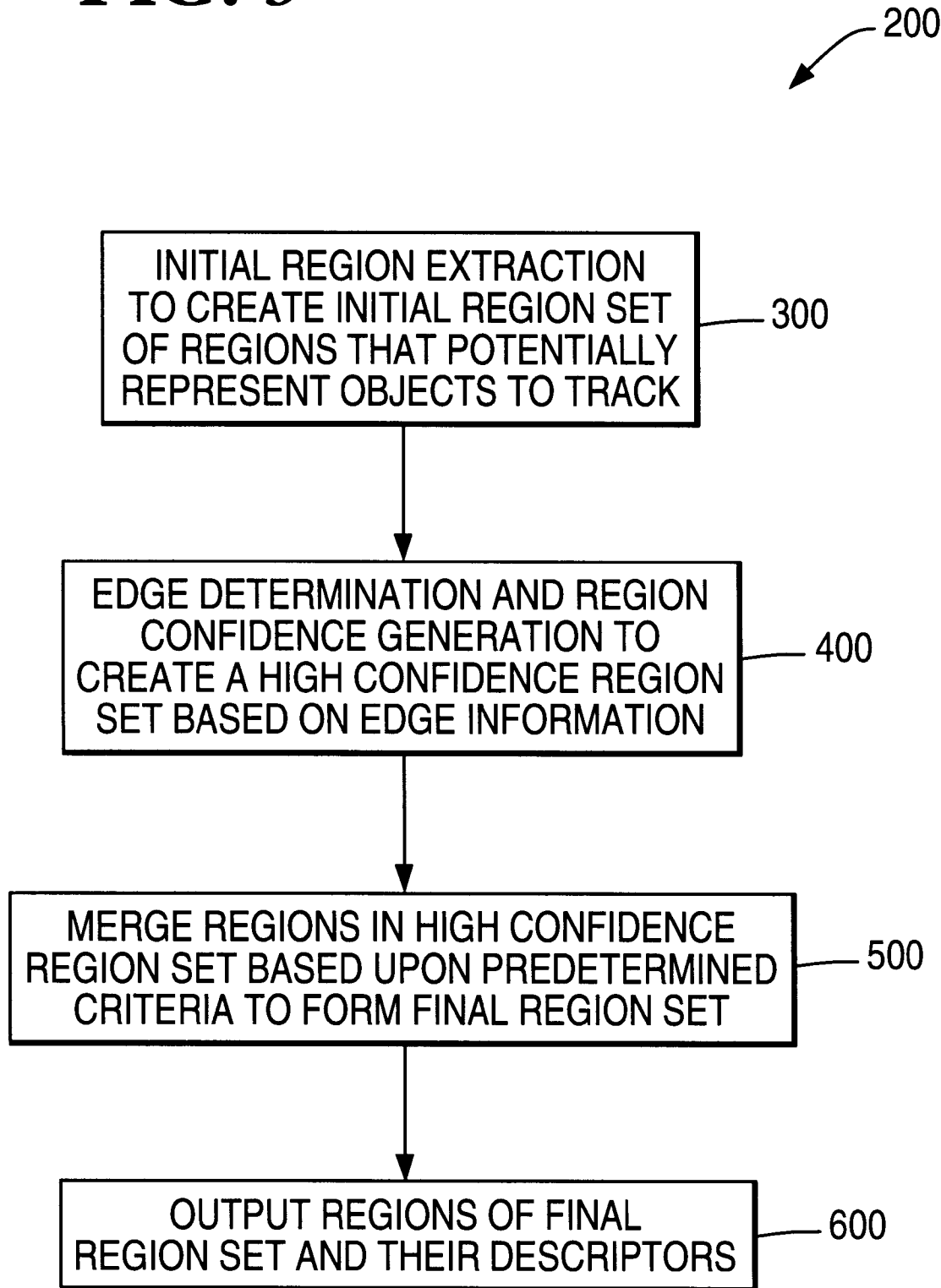


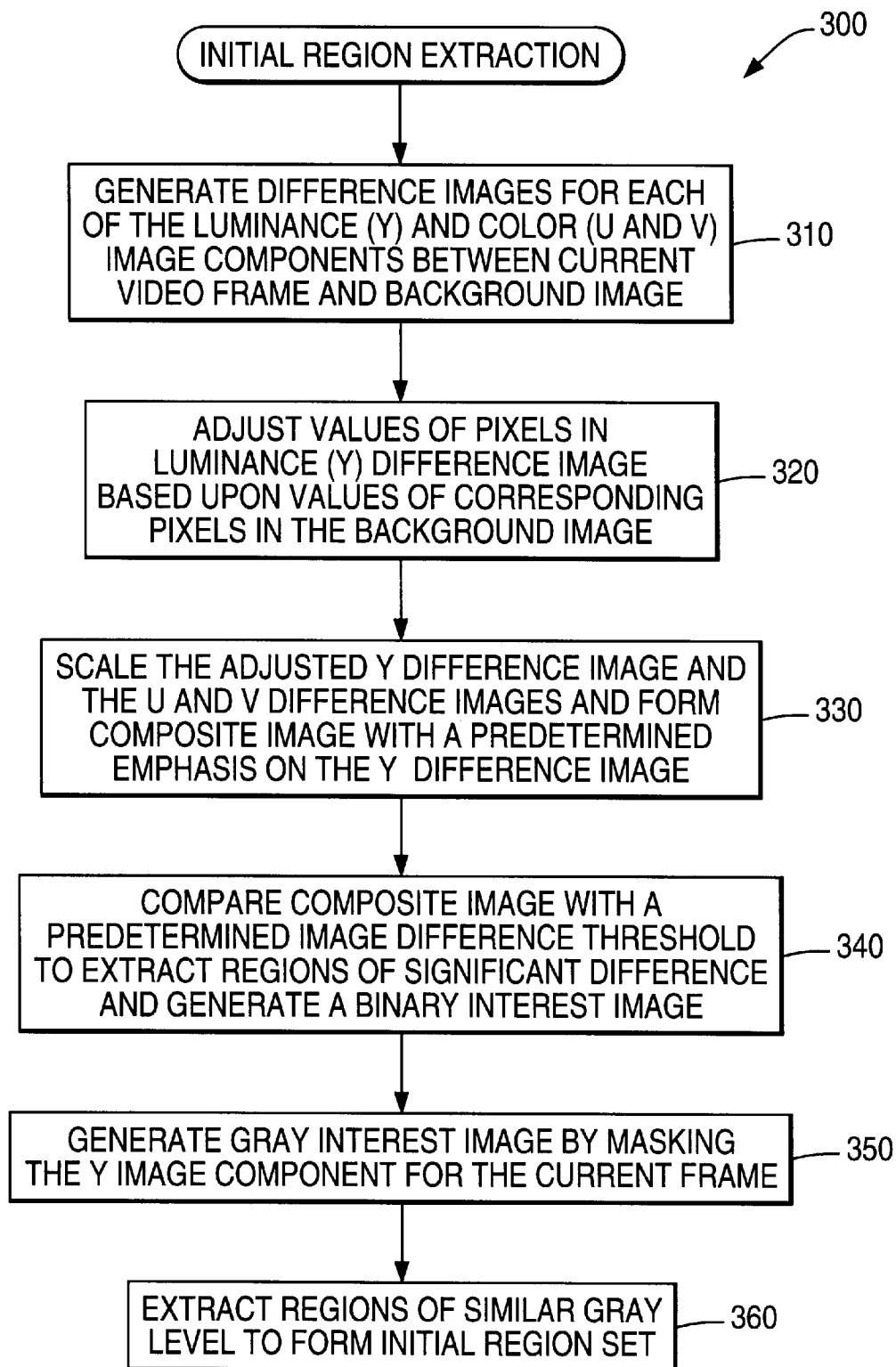
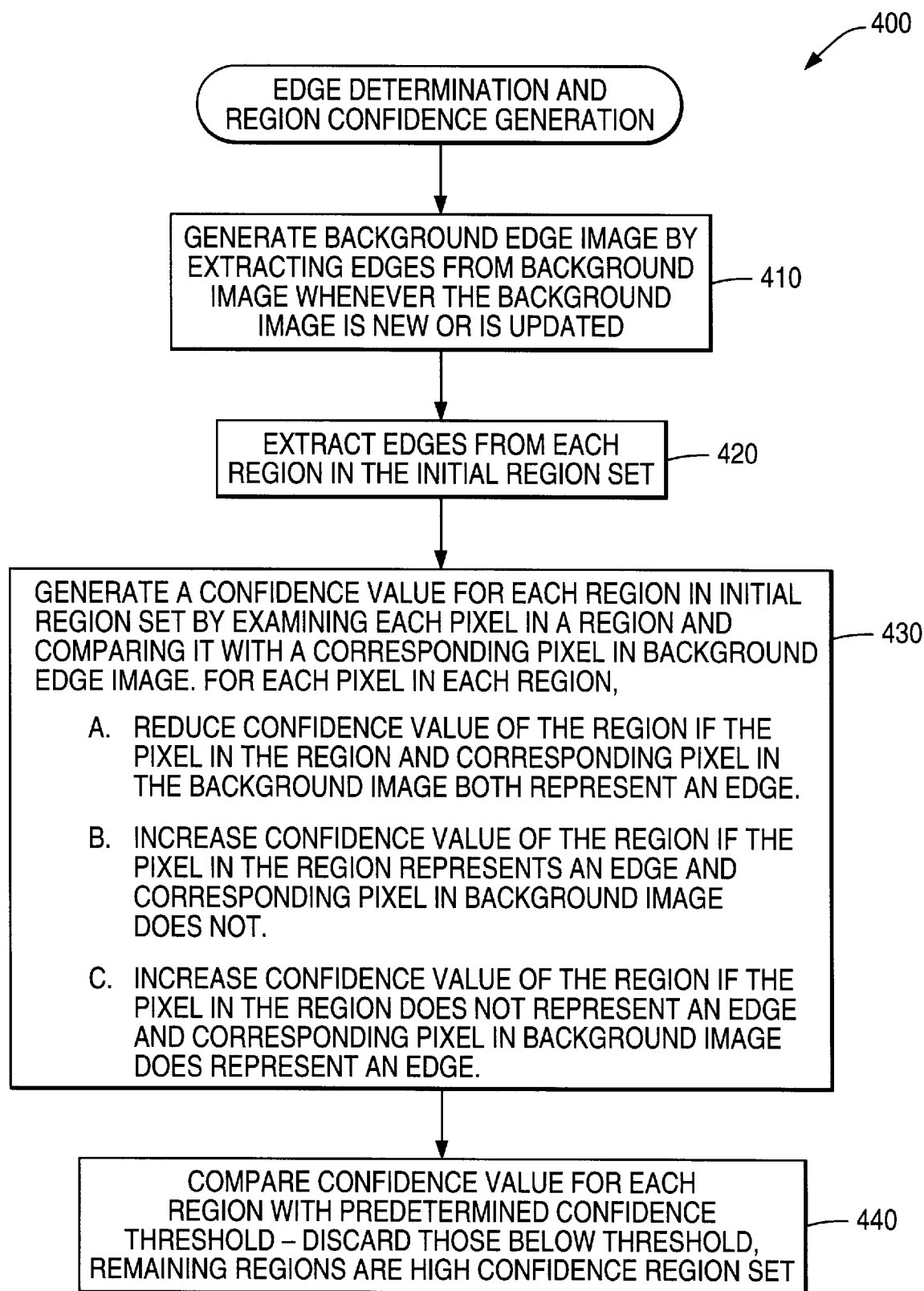
FIG. 4

FIG. 5

Explore Litigation Insights

Docket Alarm provides insights to develop a more informed litigation strategy and the peace of mind of knowing you're on top of things.

Real-Time Litigation Alerts



Keep your litigation team up-to-date with **real-time alerts** and advanced team management tools built for the enterprise, all while greatly reducing PACER spend.

Our comprehensive service means we can handle Federal, State, and Administrative courts across the country.

Advanced Docket Research



With over 230 million records, Docket Alarm's cloud-native docket research platform finds what other services can't. Coverage includes Federal, State, plus PTAB, TTAB, ITC and NLRB decisions, all in one place.

Identify arguments that have been successful in the past with full text, pinpoint searching. Link to case law cited within any court document via Fastcase.

Analytics At Your Fingertips



Learn what happened the last time a particular judge, opposing counsel or company faced cases similar to yours.

Advanced out-of-the-box PTAB and TTAB analytics are always at your fingertips.

API

Docket Alarm offers a powerful API (application programming interface) to developers that want to integrate case filings into their apps.

LAW FIRMS

Build custom dashboards for your attorneys and clients with live data direct from the court.

Automate many repetitive legal tasks like conflict checks, document management, and marketing.

FINANCIAL INSTITUTIONS

Litigation and bankruptcy checks for companies and debtors.

E-DISCOVERY AND LEGAL VENDORS

Sync your system to PACER to automate legal marketing.