



US005499378A

**United States Patent** [19]  
**McNeill, Jr. et al.**

[11] **Patent Number:** **5,499,378**  
[45] **Date of Patent:** **Mar. 12, 1996**

[54] **SMALL COMPUTER SYSTEM EMULATOR FOR NON-LOCAL SCSI DEVICES**

[75] Inventors: **Andrew B. McNeill, Jr.**, Deerfield Beach; **Edward I. Wachtel**, Boca Raton, both of Fla.

[73] Assignee: **International Business Machines Corporation**, Armonk, N.Y.

[21] Appl. No.: **263,168**

[22] Filed: **Jun. 21, 1994**

**Related U.S. Application Data**

[63] Continuation of Ser. No. 812,197, Dec. 20, 1991, abandoned.

[51] Int. Cl.<sup>6</sup> ..... **G06F 15/16**

[52] U.S. Cl. .... **395/500; 395/800; 364/228; 364/280; 364/280.9; 364/284.2; 364/DIG. 1**

[58] **Field of Search** ..... **395/800, 500; 364/DIG. 1, 228, 280, 280.9, 284.2, DIG. 1**

[56] **References Cited**

**U.S. PATENT DOCUMENTS**

4,888,680	12/1989	Sander et al.	395/500
5,073,854	12/1991	Martin et al.	364/425
5,093,776	3/1992	Morss et al.	395/500
5,129,036	7/1992	Dean et al.	395/2

5,170,466	12/1992	Rogan et al.	395/145
5,175,822	12/1992	Dixon et al.	395/275
5,185,864	2/1993	Bonevento et al.	395/275
5,204,951	4/1993	Keener et al.	395/325
5,214,695	5/1993	Arnold et al.	380/4

**FOREIGN PATENT DOCUMENTS**

0395416	4/1990	European Pat. Off.	
2220509	11/1989	United Kingdom	G06F 13/12

**OTHER PUBLICATIONS**

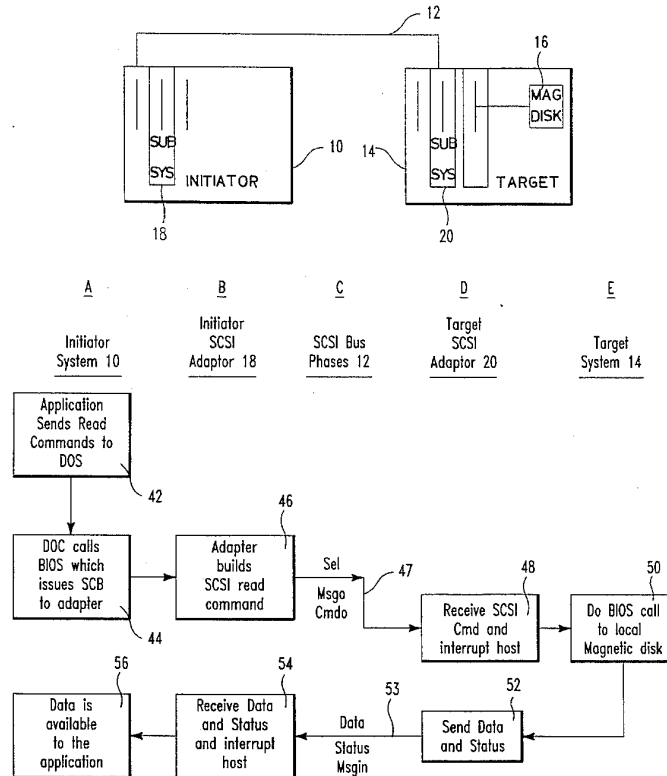
IBM TDB Vol. 30, No. 9 Feb. 1988.

*Primary Examiner*—Alyssa H. Bowler  
*Assistant Examiner*—D. Nguyen  
*Attorney, Agent, or Firm*—Bernard D. Bogdon

[57] **ABSTRACT**

A SCSI computer system is provided whereby a host computer gains access to a targeted but non-local peripheral device, which device or devices are individually responsive to either SCSI or non-SCSI commands, by sending SCSI commands via a SCSI bus to a connected SCSI target computer which emulates the targeted peripheral device local to the SCSI target computer, whether the targeted peripheral device is responsive to only SCSI or only non-SCSI commands, to cause the targeted peripheral device to carry out the initial SCSI commands.

**1 Claim, 9 Drawing Sheets**



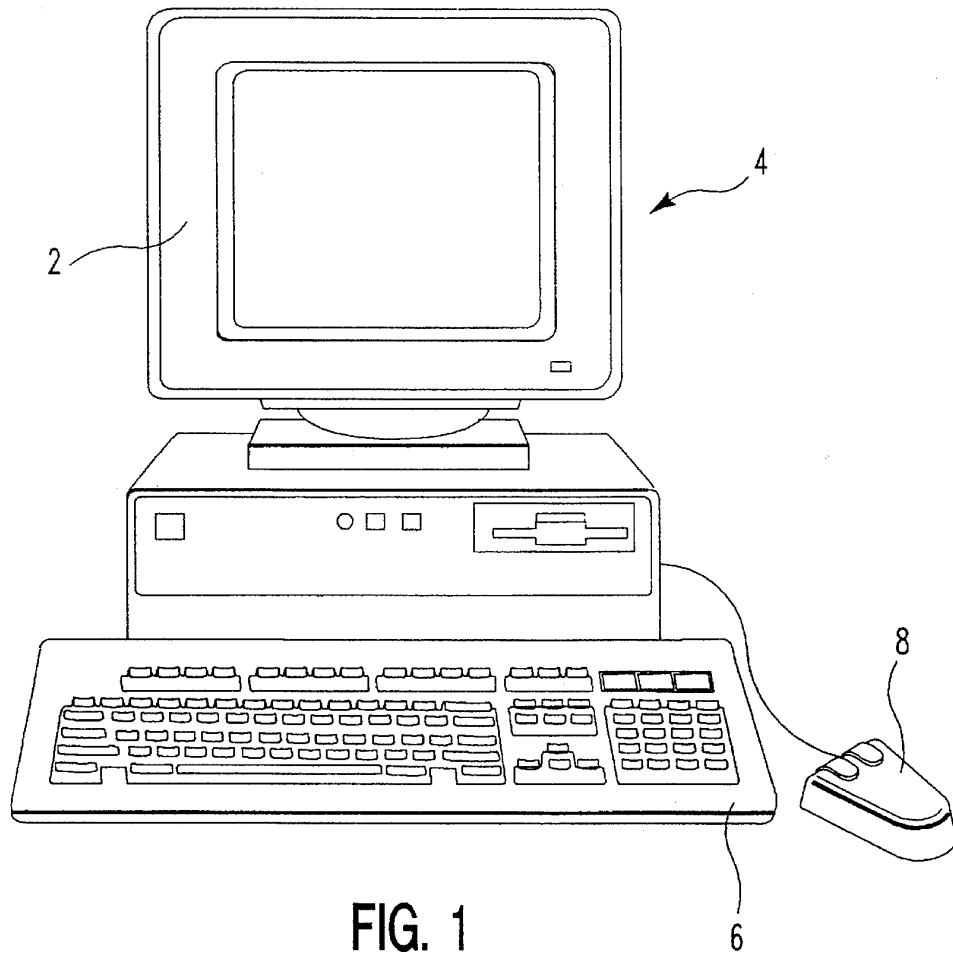


FIG. 1

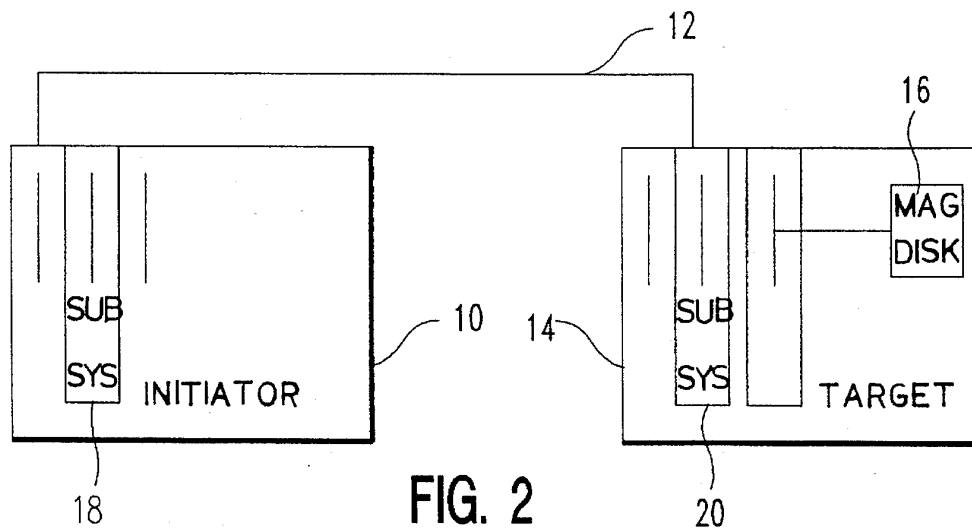
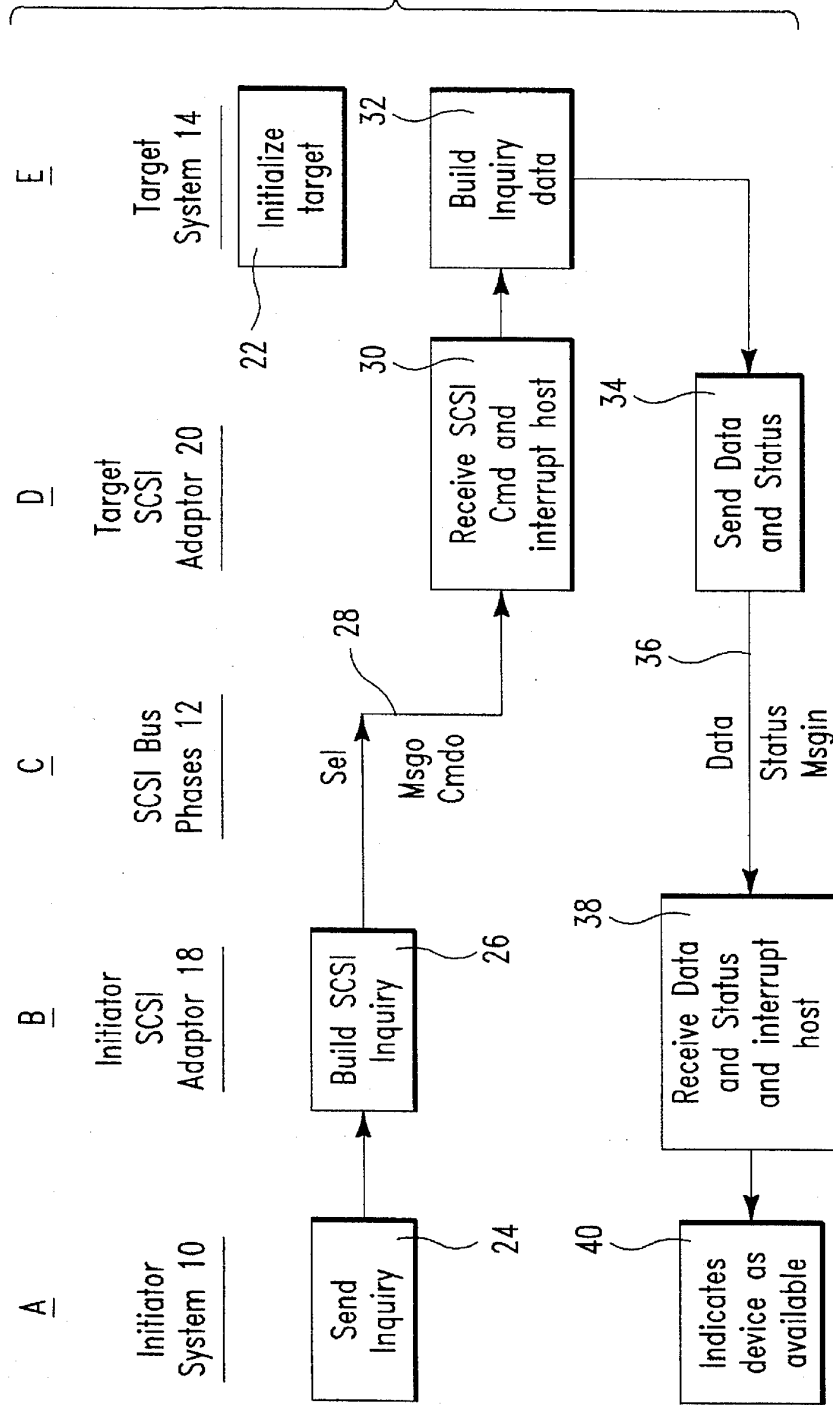
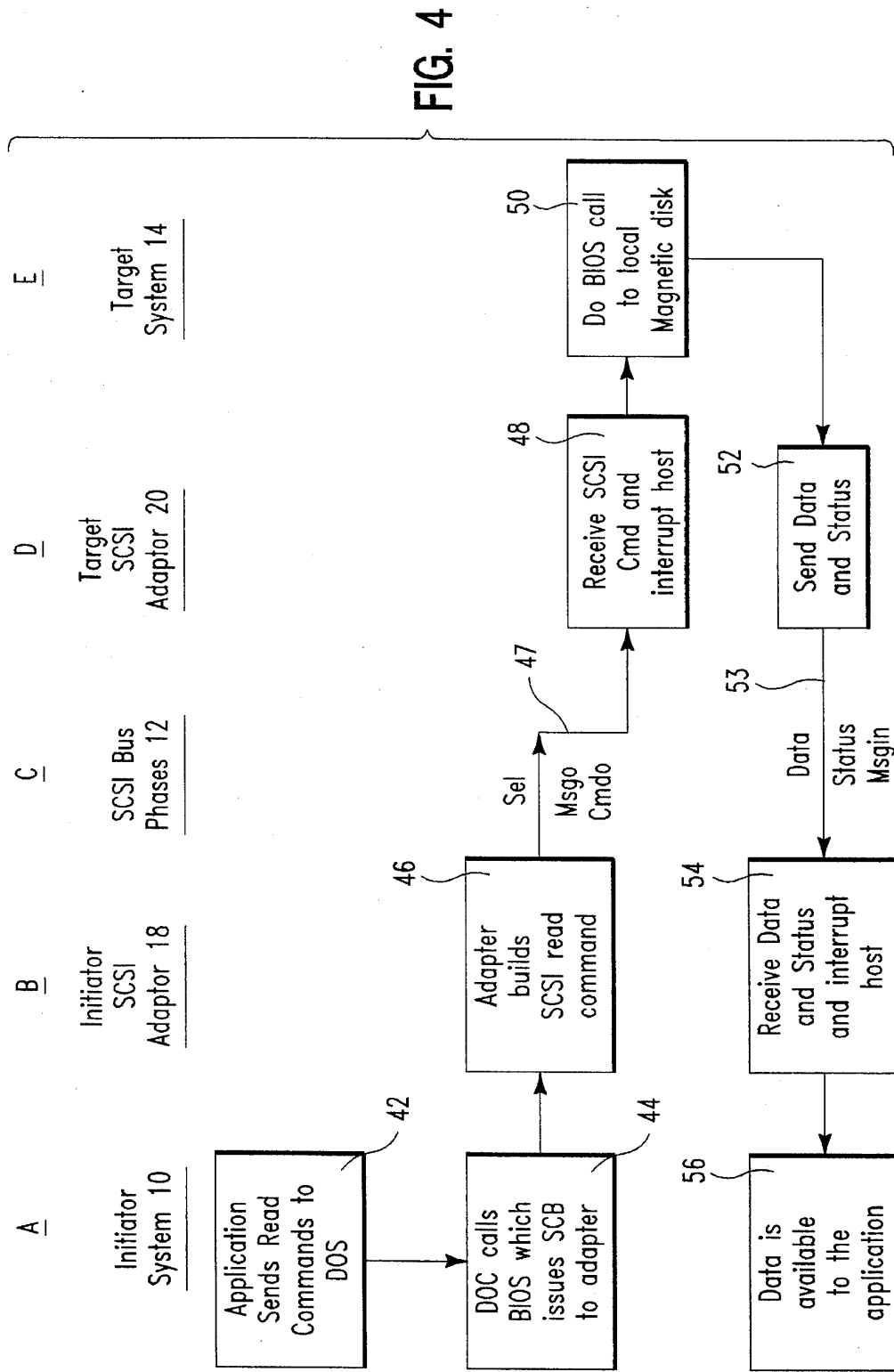


FIG. 2

FIG. 3





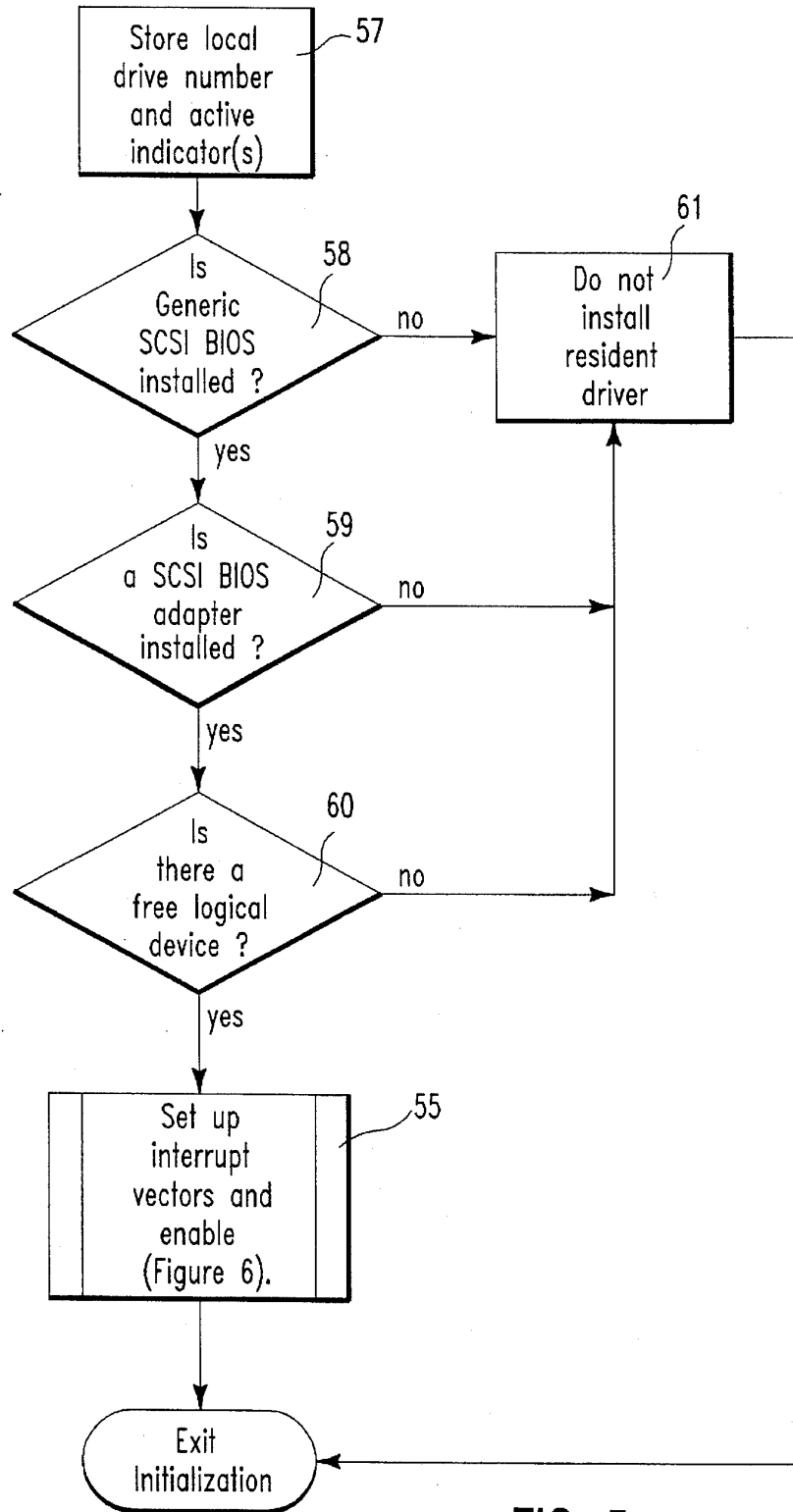


FIG. 5

# Explore Litigation Insights

Docket Alarm provides insights to develop a more informed litigation strategy and the peace of mind of knowing you're on top of things.

## Real-Time Litigation Alerts



Keep your litigation team up-to-date with **real-time alerts** and advanced team management tools built for the enterprise, all while greatly reducing PACER spend.

Our comprehensive service means we can handle Federal, State, and Administrative courts across the country.

## Advanced Docket Research



With over 230 million records, Docket Alarm's cloud-native docket research platform finds what other services can't. Coverage includes Federal, State, plus PTAB, TTAB, ITC and NLRB decisions, all in one place.

Identify arguments that have been successful in the past with full text, pinpoint searching. Link to case law cited within any court document via Fastcase.

## Analytics At Your Fingertips



Learn what happened the last time a particular judge, opposing counsel or company faced cases similar to yours.

Advanced out-of-the-box PTAB and TTAB analytics are always at your fingertips.

## API

Docket Alarm offers a powerful API (application programming interface) to developers that want to integrate case filings into their apps.

## LAW FIRMS

Build custom dashboards for your attorneys and clients with live data direct from the court.

Automate many repetitive legal tasks like conflict checks, document management, and marketing.

## FINANCIAL INSTITUTIONS

Litigation and bankruptcy checks for companies and debtors.

## E-DISCOVERY AND LEGAL VENDORS

Sync your system to PACER to automate legal marketing.