

(12) United States Patent
Yamamoto

(10) Patent No.: US 6,256,452 B1
(45) Date of Patent: *Jul. 3, 2001

(54) **STORAGE DEVICE FOR AN ELECTRONIC CAMERA THAT IS ACCESSIBLE BY AN EXTERNAL DEVICE**

(75) Inventor: **Yasuhiro Yamamoto, Tokyo (JP)**

(73) Assignee: **Asahi Kogaku Kogyo Kabushiki Kaisha, Tokyo (JP)**

(*) Notice: This patent issued on a continued prosecution application filed under 37 CFR 1.53(d), and is subject to the twenty year patent term provisions of 35 U.S.C. 154(a)(2).

Subject to any disclaimer, the term of this patent is extended or adjusted under 35 U.S.C. 154(b) by 0 days.

4,802,020	*	1/1989	Miyake et al.	358/342
4,989,078	*	1/1991	Paxton	358/342
5,047,869	*	9/1991	Aoki et al.	358/341
5,138,459	*	8/1992	Roberts et al.	348/232
5,218,451	*	6/1993	Kodama et al.	358/335
5,218,452	*	6/1993	Kondo et al.	358/342
5,276,563	*	1/1994	Ogawa	360/35.1
5,294,990	*	3/1994	Aoki	348/363
5,359,427	*	10/1994	Sato	358/335
5,459,520	*	10/1995	Sasaki	348/445
5,499,105	*	3/1996	Wakui	358/342

FOREIGN PATENT DOCUMENTS

690423 3/1994 (JP) .

* cited by examiner

(21) Appl. No.: **08/802,880**

(22) Filed: **Feb. 19, 1997**

Related U.S. Application Data

(63) Continuation of application No. 08/525,137, filed on Sep. 8, 1995, now abandoned.

(30) Foreign Application Priority Data

Sep. 8, 1994 (JP) 6-240522

(51) **Int. Cl.⁷** **H04N 5/225**

(52) **U.S. Cl.** **386/117; 348/372**

(58) **Field of Search** 386/1, 46, 38, 386/117, 120; 358/906, 909.1; 348/207, 232, 372; H04N 5/225

(56) References Cited

U.S. PATENT DOCUMENTS

4,717,968 * 1/1988 Painton et al. 358/310

(57) ABSTRACT

An electronic still camera has a hard disk device in which a hard disk is mounted to record image data obtained by the electronic still camera. The hard disk can also be used as an external storage device for a computer. When a mode select switch is set to select a photographing mode to record image data on the hard disk, a rotation of the hard disk is stopped after recording the image data. When the mode select switch is set to select an external mode in which the hard disk is accessed by the computer, a rotation of the hard disk is stopped when the hard disk has not been accessed by the computer for, for example, 5 minutes.

20 Claims, 4 Drawing Sheets

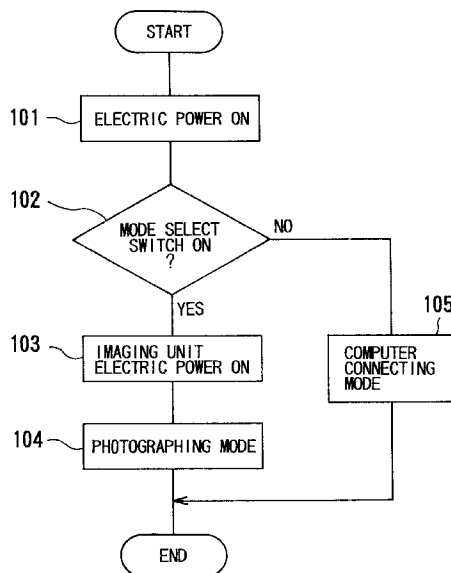


Fig. 1

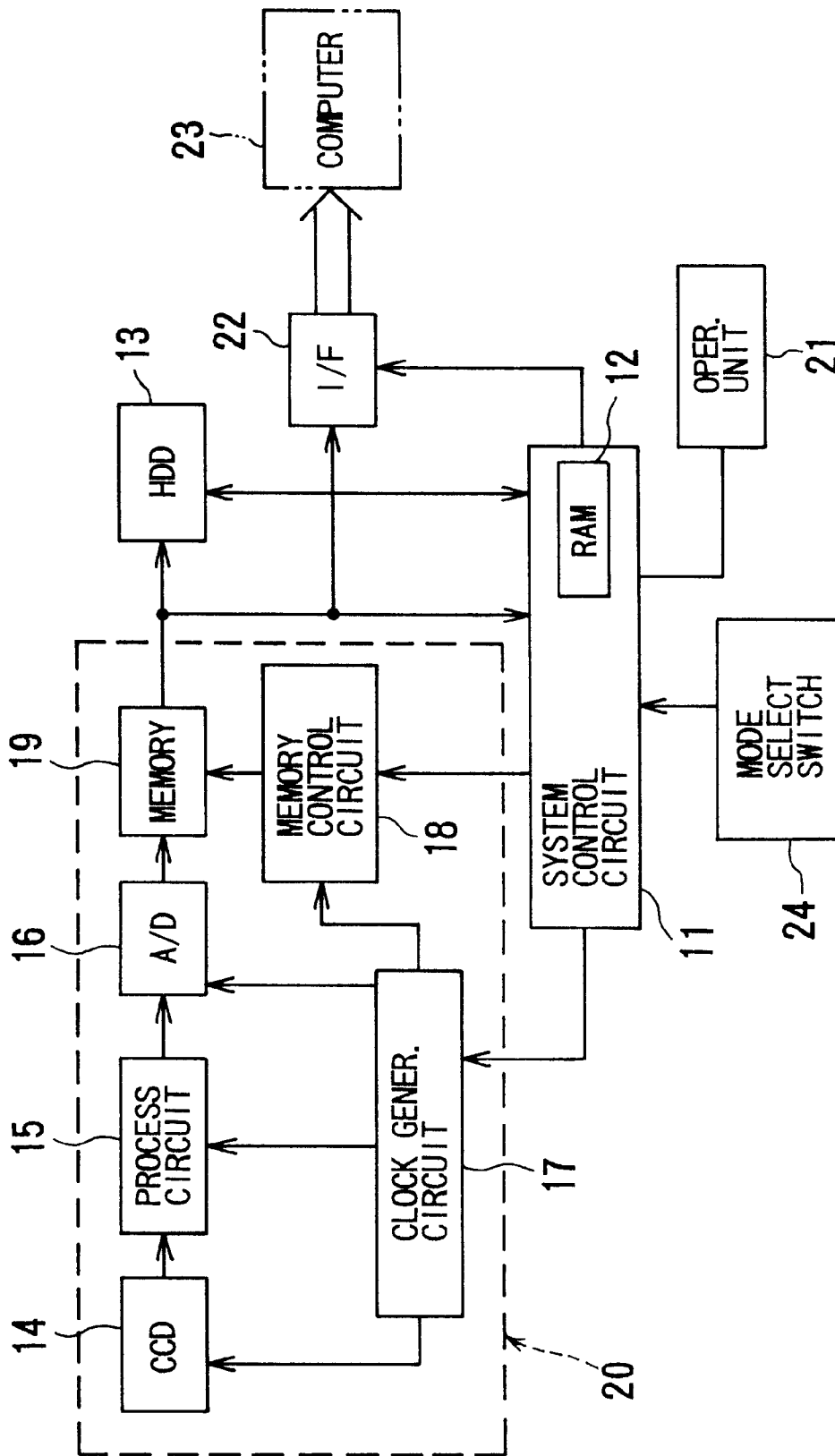


Fig. 2

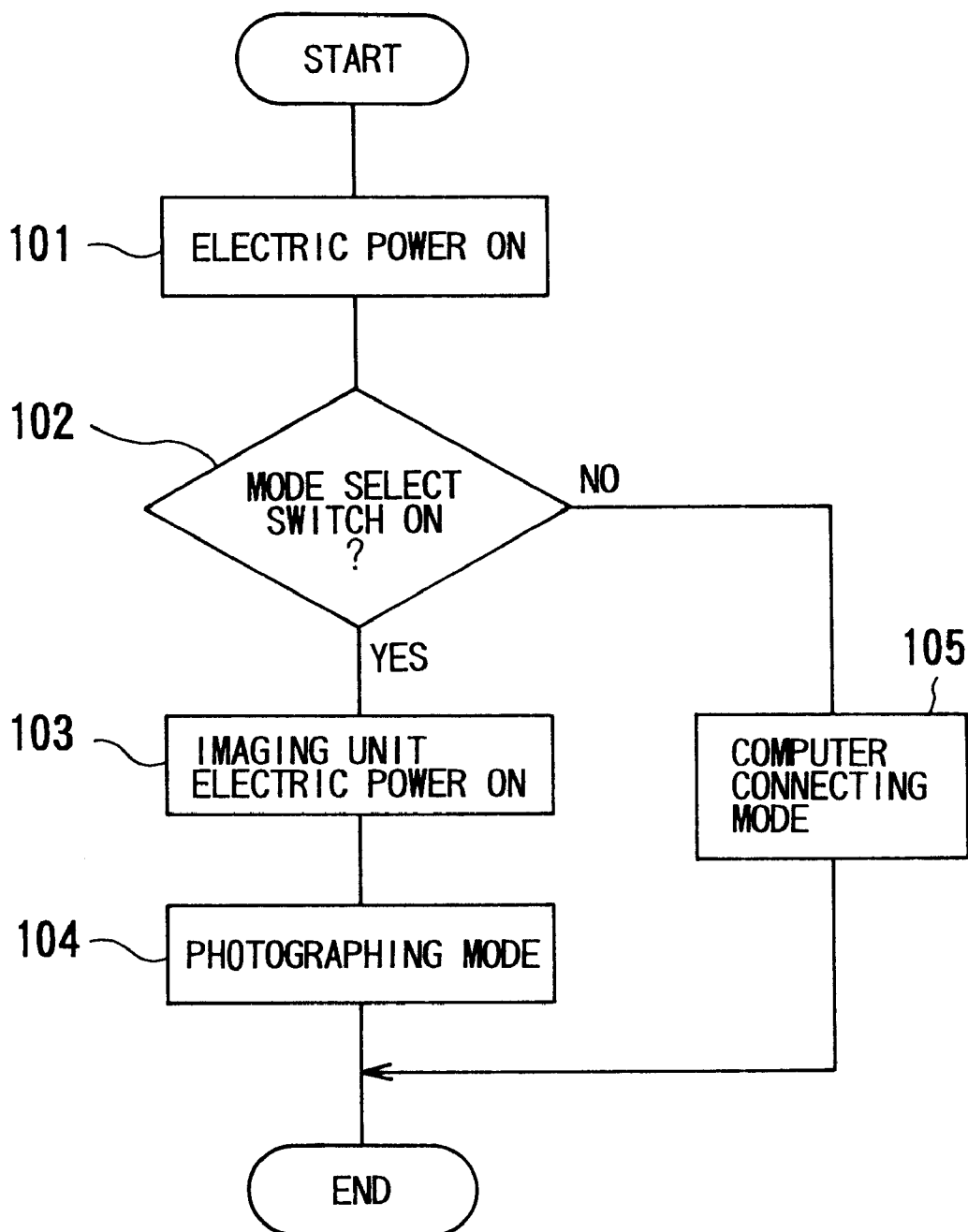


Fig. 3

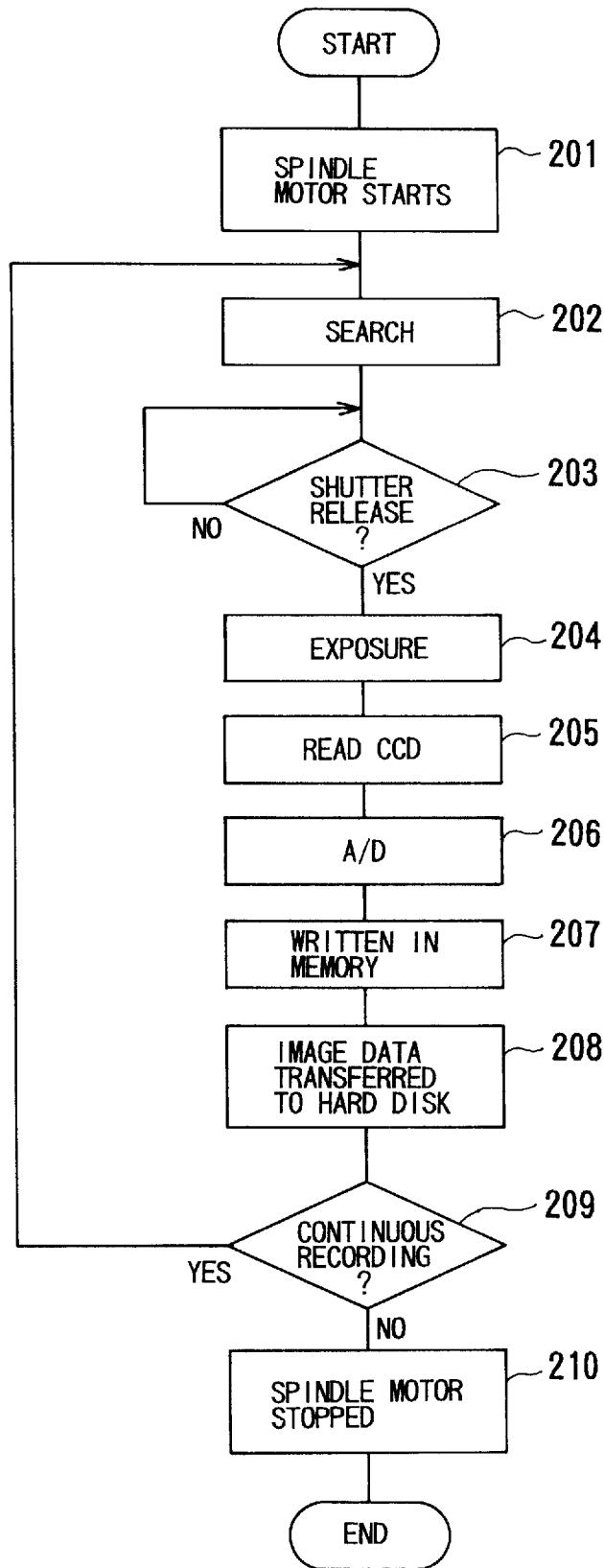
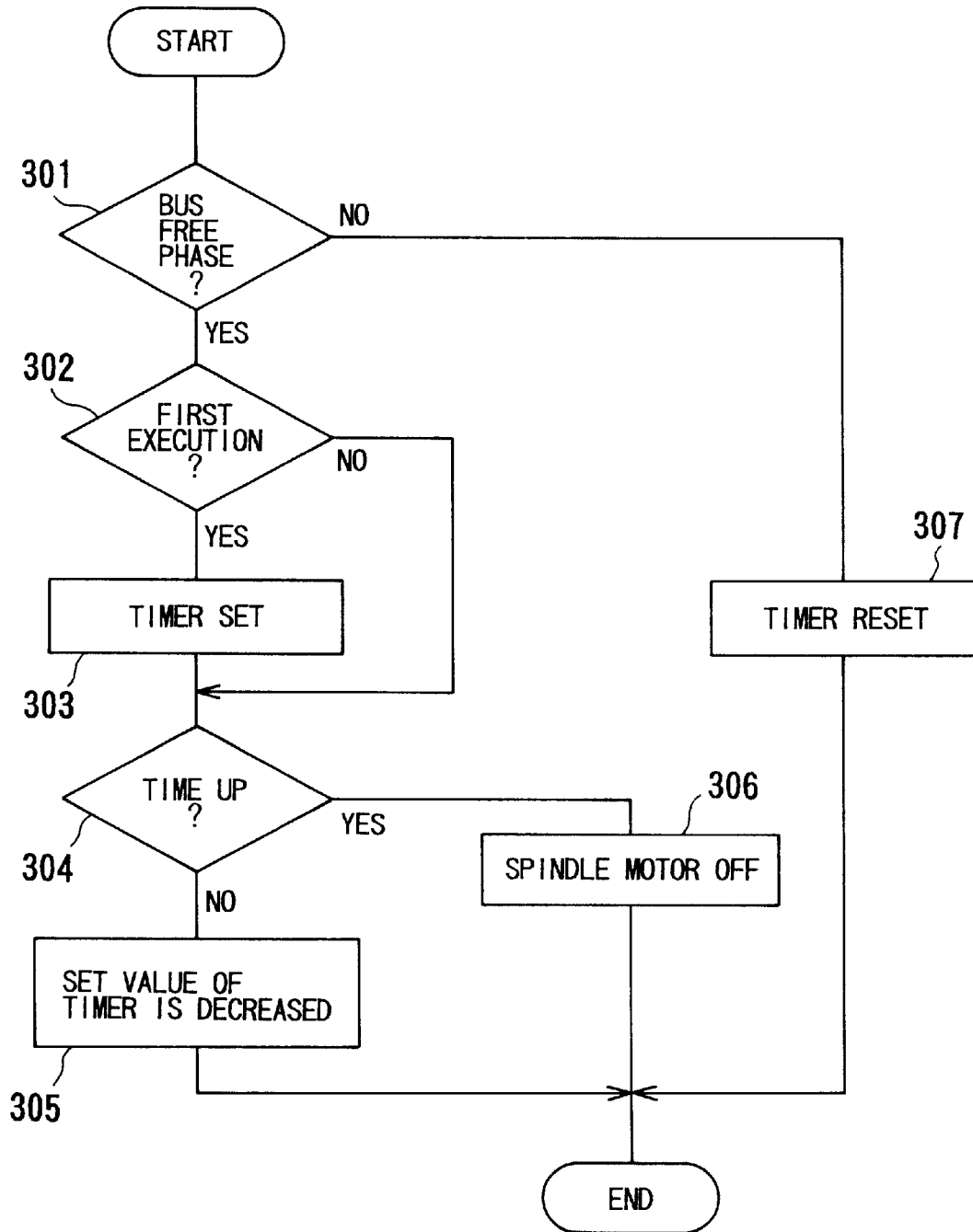


Fig. 4



Explore Litigation Insights

Docket Alarm provides insights to develop a more informed litigation strategy and the peace of mind of knowing you're on top of things.

Real-Time Litigation Alerts



Keep your litigation team up-to-date with **real-time alerts** and advanced team management tools built for the enterprise, all while greatly reducing PACER spend.

Our comprehensive service means we can handle Federal, State, and Administrative courts across the country.

Advanced Docket Research



With over 230 million records, Docket Alarm's cloud-native docket research platform finds what other services can't. Coverage includes Federal, State, plus PTAB, TTAB, ITC and NLRB decisions, all in one place.

Identify arguments that have been successful in the past with full text, pinpoint searching. Link to case law cited within any court document via Fastcase.

Analytics At Your Fingertips



Learn what happened the last time a particular judge, opposing counsel or company faced cases similar to yours.

Advanced out-of-the-box PTAB and TTAB analytics are always at your fingertips.

API

Docket Alarm offers a powerful API (application programming interface) to developers that want to integrate case filings into their apps.

LAW FIRMS

Build custom dashboards for your attorneys and clients with live data direct from the court.

Automate many repetitive legal tasks like conflict checks, document management, and marketing.

FINANCIAL INSTITUTIONS

Litigation and bankruptcy checks for companies and debtors.

E-DISCOVERY AND LEGAL VENDORS

Sync your system to PACER to automate legal marketing.