



US005731834A

# United States Patent [19]

[11] Patent Number: **5,731,834**

Huot et al.

[45] Date of Patent: **Mar. 24, 1998**

[54] **REPLACEABLE CCD ARRAY AND METHOD OF ASSEMBLY**

[75] Inventors: **Robert Donald Huot**, Pittsford; **Rocco Menaguale**, Fairport; **Robert Edward Ashe**, Henrietta; **Charles John Moriarty**, Rochester, all of N.Y.

[73] Assignee: **Eastman Kodak Company**, Rochester, N.Y.

[21] Appl. No.: **486,306**

[22] Filed: **Jun. 7, 1995**

[51] Int. Cl.<sup>6</sup> ..... **H04N 3/14**

[52] U.S. Cl. .... **348/374; 348/340**

[58] Field of Search ..... **348/373, 374, 348/340, 335**

[56] **References Cited**

**U.S. PATENT DOCUMENTS**

4,134,129	1/1979	Filipovich	348/335
4,385,325	5/1983	Chen	358/483
4,594,613	6/1986	Shinbori et al.	348/374

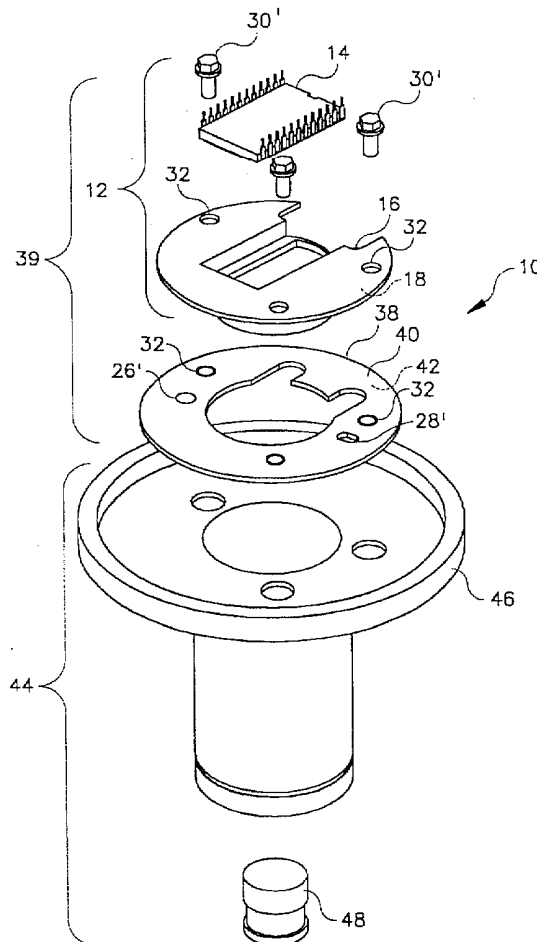
4,734,778	3/1988	Kobayashi	348/335
4,803,557	2/1989	Bridges	348/374
4,830,985	5/1989	Araghi et al.	437/209
5,032,898	7/1991	Bowen et al.	257/433
5,047,835	9/1991	Chang	257/433
5,097,274	3/1992	Drake et al.	347/42
5,140,150	8/1992	Cosijn	257/231
5,291,010	3/1994	Tsuji	250/208.1

Primary Examiner—Wendy Garber  
Attorney, Agent, or Firm—Christopher J. Fildes

[57] **ABSTRACT**

A CCD array assembly for use in a scanner, includes a CCD array optically aligned relative to a CCD array nest and affixed thereto to form a replaceable subassembly. The CCD array nest has an outwardly facing statically determinate or exactly constrained interface mounting surface. A carrier plate with the CCD array assembly removably attached thereto is optically aligned and affixed to a barrel frame and lens assembly. The subassembly is removably attachable to the carrier plate allowing replacement of a failed CCD array without additional alignment.

**9 Claims, 4 Drawing Sheets**



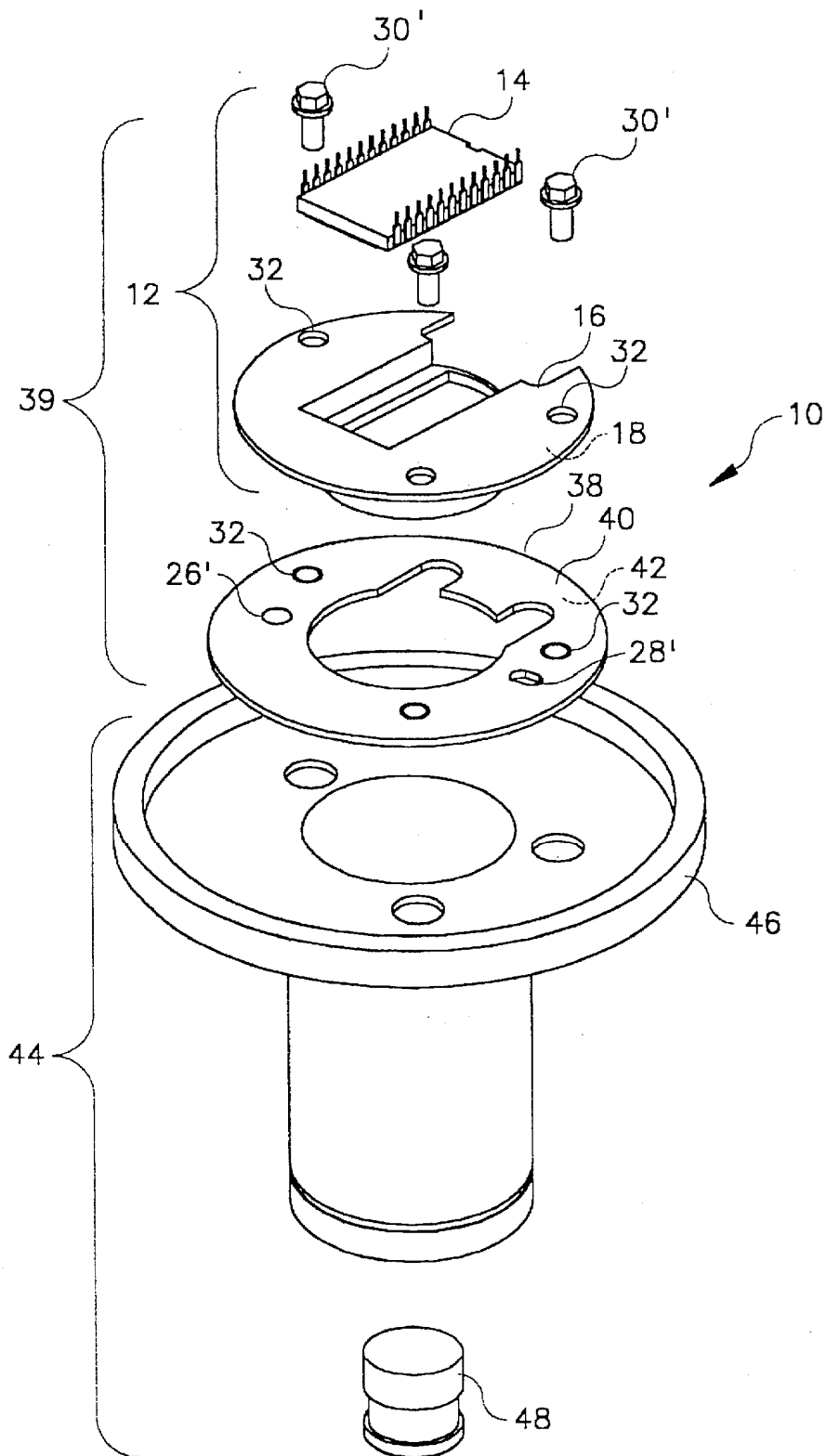


FIG. 1

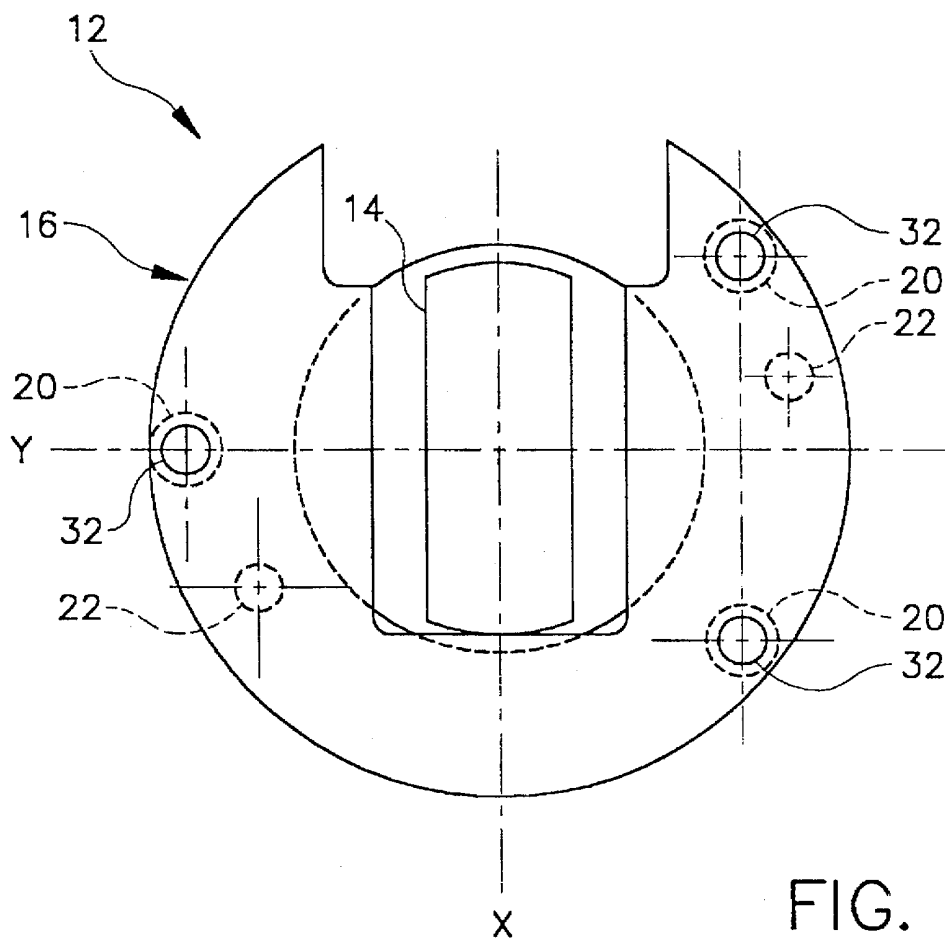


FIG. 2

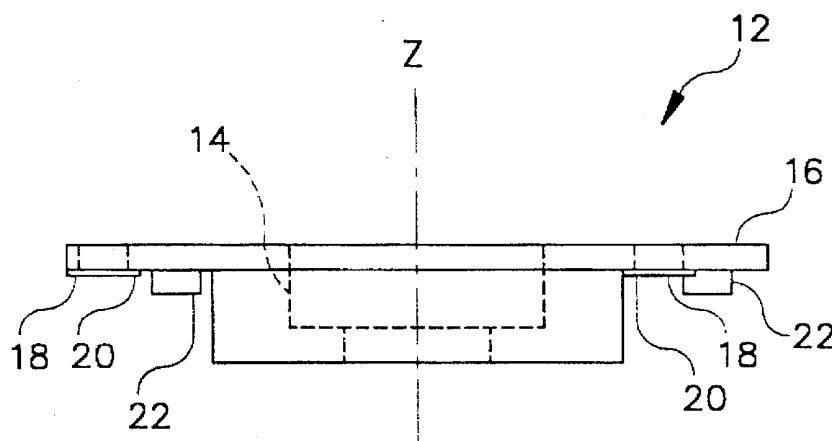


FIG. 3

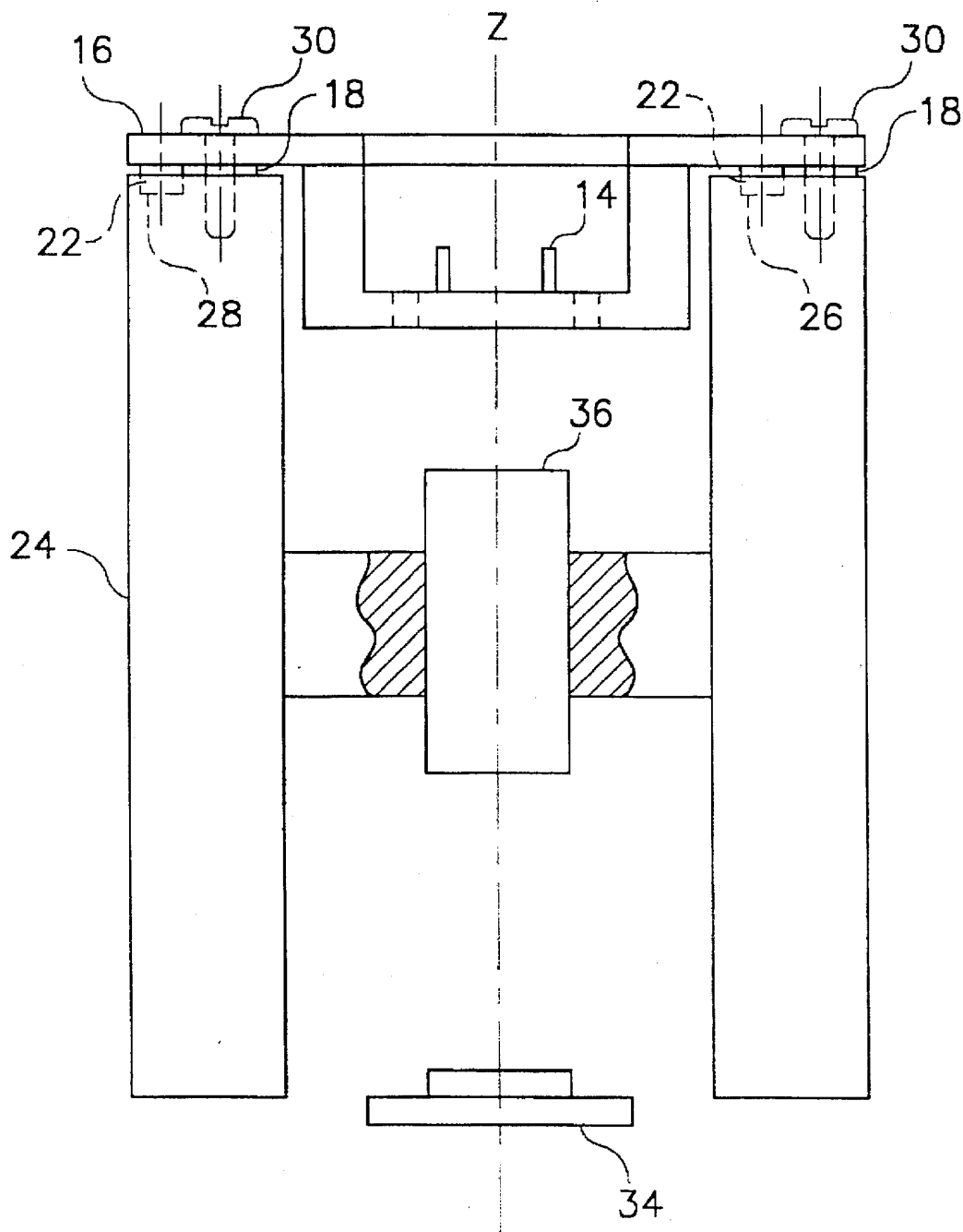


FIG. 4

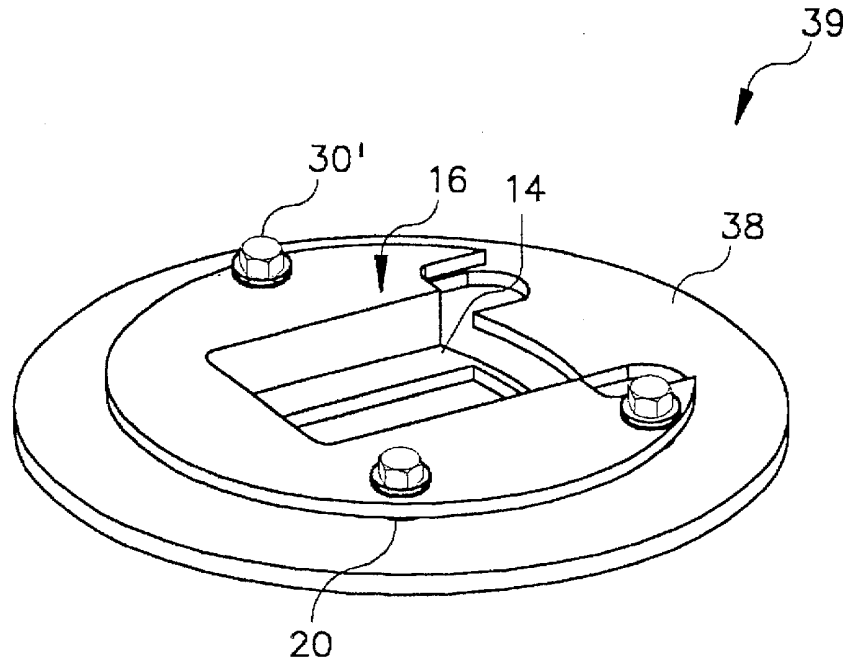


FIG. 5

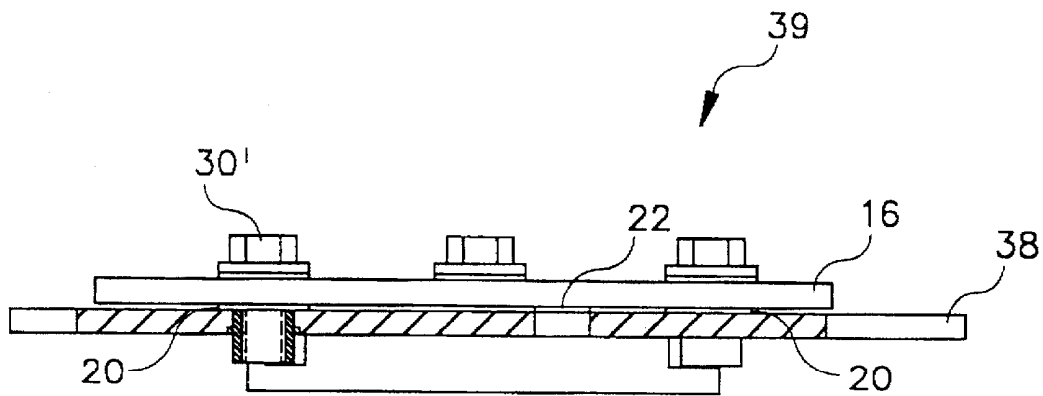


FIG. 6

# Explore Litigation Insights

Docket Alarm provides insights to develop a more informed litigation strategy and the peace of mind of knowing you're on top of things.

## Real-Time Litigation Alerts



Keep your litigation team up-to-date with **real-time alerts** and advanced team management tools built for the enterprise, all while greatly reducing PACER spend.

Our comprehensive service means we can handle Federal, State, and Administrative courts across the country.

## Advanced Docket Research



With over 230 million records, Docket Alarm's cloud-native docket research platform finds what other services can't. Coverage includes Federal, State, plus PTAB, TTAB, ITC and NLRB decisions, all in one place.

Identify arguments that have been successful in the past with full text, pinpoint searching. Link to case law cited within any court document via Fastcase.

## Analytics At Your Fingertips



Learn what happened the last time a particular judge, opposing counsel or company faced cases similar to yours.

Advanced out-of-the-box PTAB and TTAB analytics are always at your fingertips.

## API

Docket Alarm offers a powerful API (application programming interface) to developers that want to integrate case filings into their apps.

## LAW FIRMS

Build custom dashboards for your attorneys and clients with live data direct from the court.

Automate many repetitive legal tasks like conflict checks, document management, and marketing.

## FINANCIAL INSTITUTIONS

Litigation and bankruptcy checks for companies and debtors.

## E-DISCOVERY AND LEGAL VENDORS

Sync your system to PACER to automate legal marketing.