



US006961334B1

(12) **United States Patent**  
**Kaczmarczyk**

(10) **Patent No.:** **US 6,961,334 B1**  
(45) **Date of Patent:** **Nov. 1, 2005**

(54) **INTELLIGENCE ENGINE**

(75) Inventor: **Casimer M. Kaczmarczyk**, Plano, TX (US)

(73) Assignee: **Sonus Networks, Inc.**, Chelmsford, MA (US)

(\*) Notice: Subject to any disclaimer, the term of this patent is extended or adjusted under 35 U.S.C. 154(b) by 858 days.

(21) Appl. No.: **09/821,507**

(22) Filed: **Mar. 29, 2001**

(51) **Int. Cl.**<sup>7</sup> ..... **H04L 12/66**

(52) **U.S. Cl.** ..... **370/354; 379/201.02**

(58) **Field of Search** ..... 370/230, 270, 370/351-356, 400, 401, 402, 410, 411, 422, 370/465-469; 379/201.02, 201.03, 207.02, 379/218.01, 219, 220.01, 221.03, 221.06, 379/221.08

(56) **References Cited**

**U.S. PATENT DOCUMENTS**

6,385,646 B1 *	5/2002	Brown et al. ....	709/217
6,393,481 B1 *	5/2002	Deo et al. ....	709/224
6,704,303 B1 *	3/2004	Bowman-Amuah .....	370/352

\* cited by examiner

*Primary Examiner*—Wellington Chin

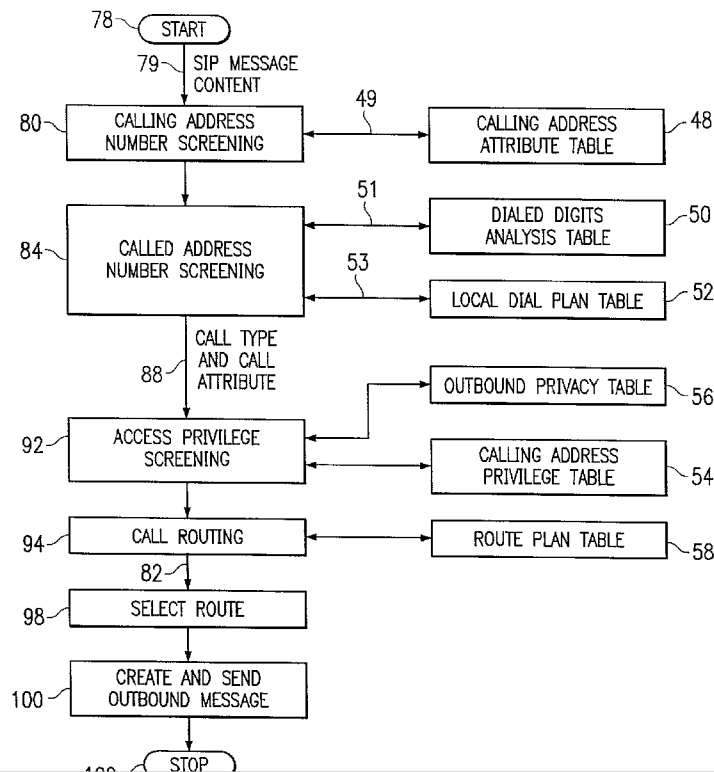
*Assistant Examiner*—John Shew

(74) *Attorney, Agent, or Firm*—Proskauer Rose, LLP

(57) **ABSTRACT**

One aspect of the invention is an intelligence engine. The intelligence engine includes a distributor layer operable to communicate with at least one call agent in a telecommunications network. The call agent may receive state-driven information associated with a call between an originator and a termination point. The intelligence engine also includes a telephony management layer. The telephony management layer is operable to receive a plurality of stateless requests from the distributor layer, access a database entry associated with the requests, spawn at least one request to obtain information associated with the originator and the termination point if necessary to route the call, and send the information to the call agent to route the call. In a particular embodiment, the intelligence engine further includes a facility management command and control layer. The facility management command and control layer is operable to receive an indicator signal associated with the call from the network. The call is controlled by the call agent. The facility management command and control layer is also operable to access a database entry associated with the call agent in response to the indicator signal and to reassign control of the call from the call agent to a second call agent.

**31 Claims, 29 Drawing Sheets**



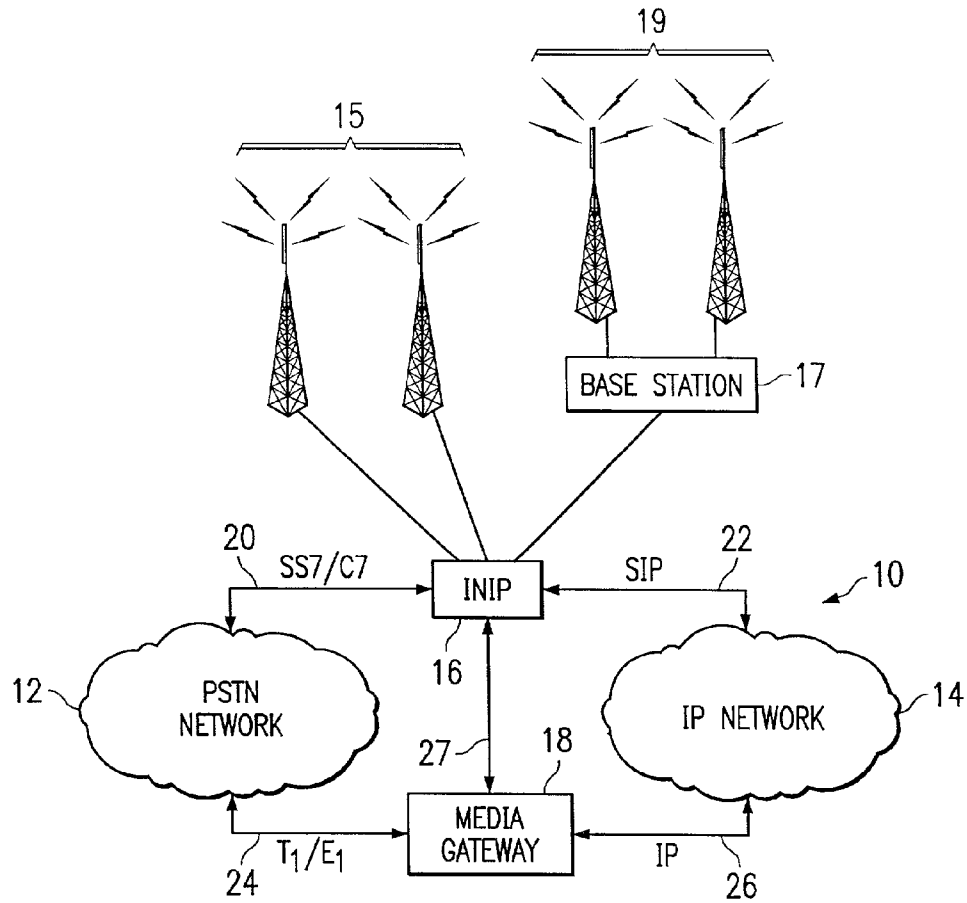


FIG. 1

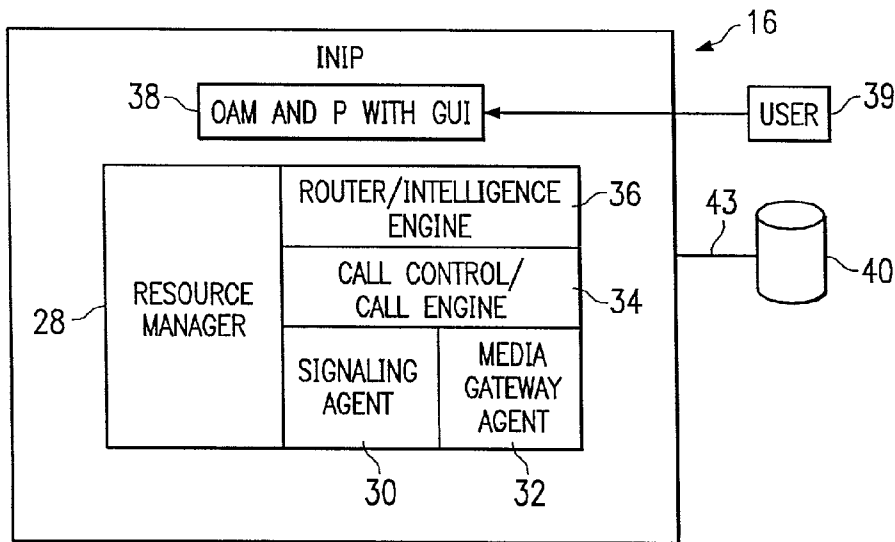
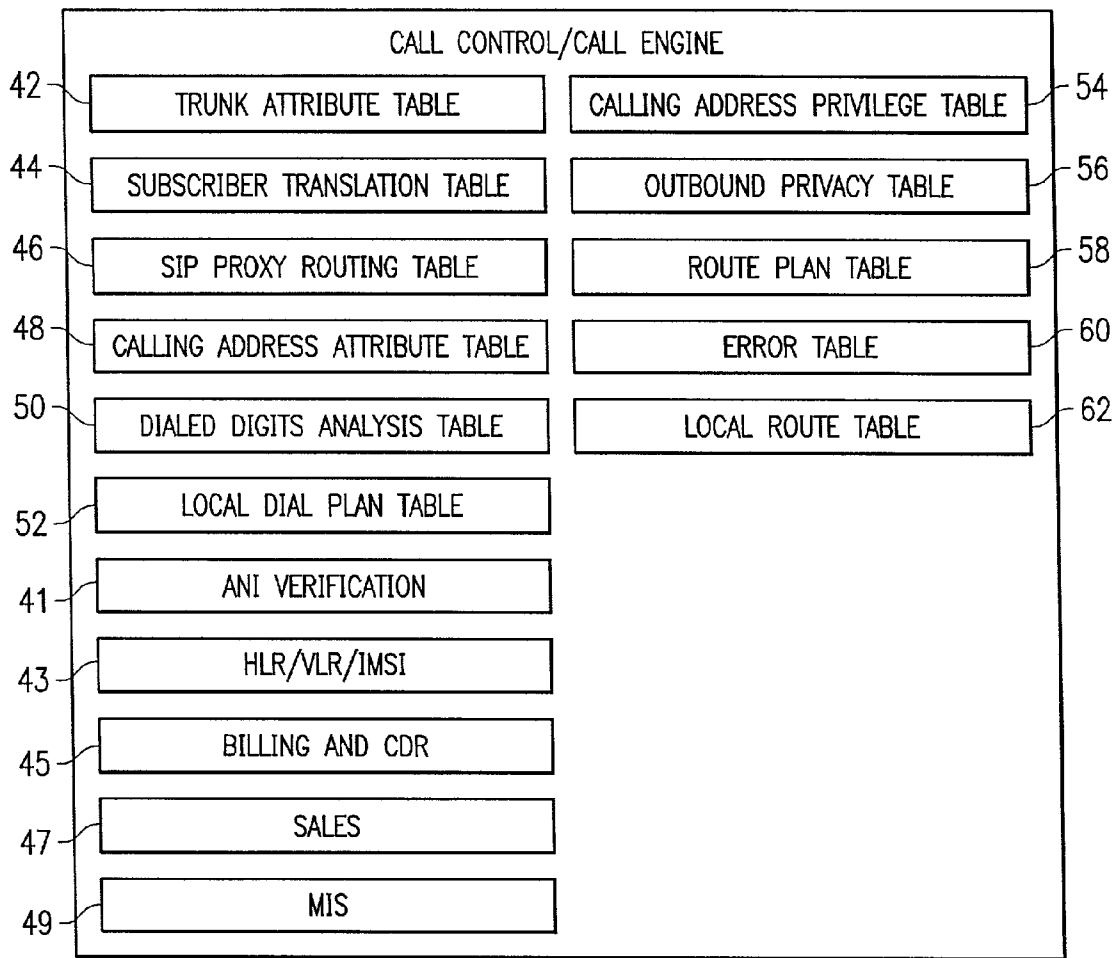


FIG. 2A

FIG. 2B

40



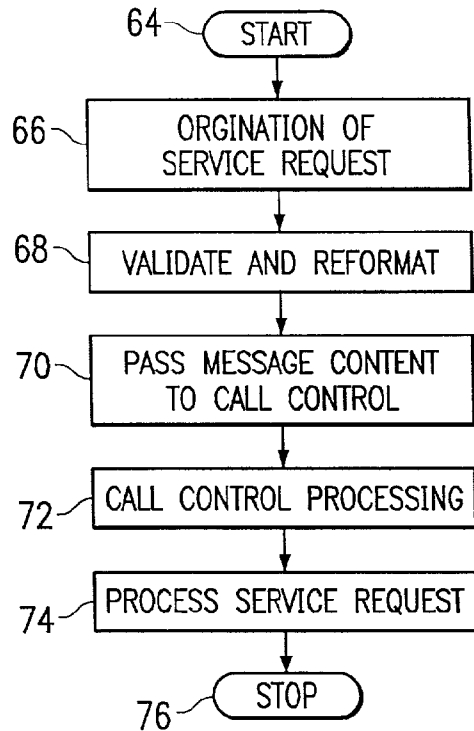


FIG. 3

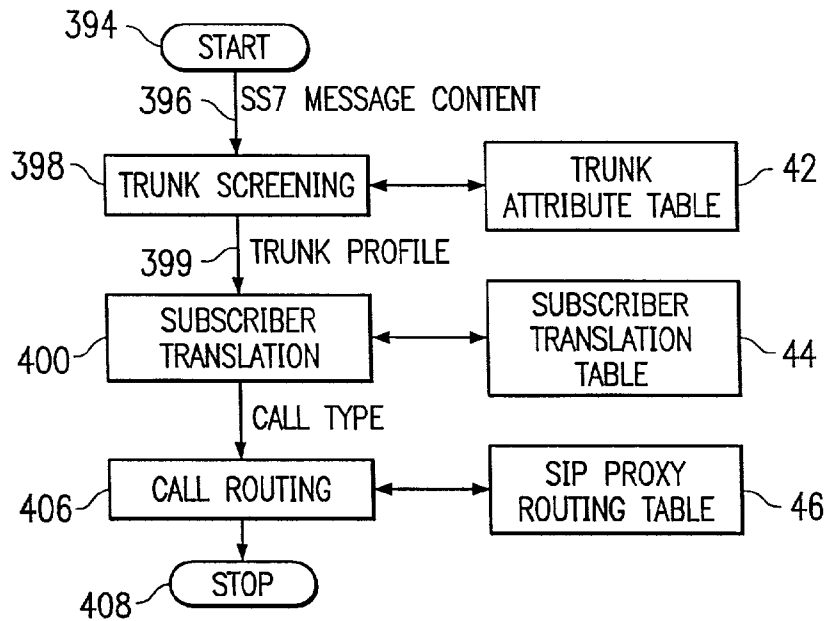
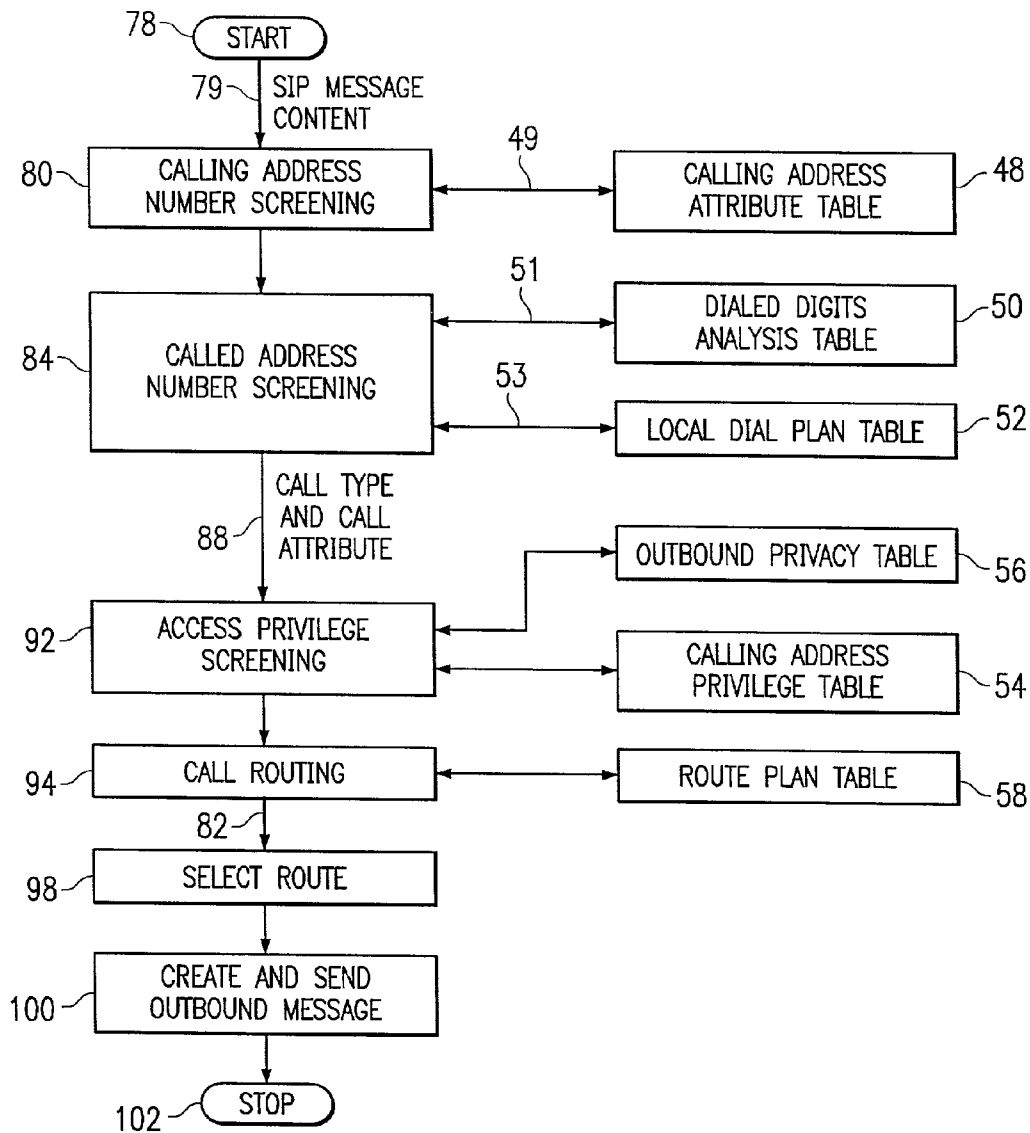


FIG. 4B

FIG. 4A



# Explore Litigation Insights

Docket Alarm provides insights to develop a more informed litigation strategy and the peace of mind of knowing you're on top of things.

## Real-Time Litigation Alerts



Keep your litigation team up-to-date with **real-time alerts** and advanced team management tools built for the enterprise, all while greatly reducing PACER spend.

Our comprehensive service means we can handle Federal, State, and Administrative courts across the country.

## Advanced Docket Research



With over 230 million records, Docket Alarm's cloud-native docket research platform finds what other services can't. Coverage includes Federal, State, plus PTAB, TTAB, ITC and NLRB decisions, all in one place.

Identify arguments that have been successful in the past with full text, pinpoint searching. Link to case law cited within any court document via Fastcase.

## Analytics At Your Fingertips



Learn what happened the last time a particular judge, opposing counsel or company faced cases similar to yours.

Advanced out-of-the-box PTAB and TTAB analytics are always at your fingertips.

## API

Docket Alarm offers a powerful API (application programming interface) to developers that want to integrate case filings into their apps.

## LAW FIRMS

Build custom dashboards for your attorneys and clients with live data direct from the court.

Automate many repetitive legal tasks like conflict checks, document management, and marketing.

## FINANCIAL INSTITUTIONS

Litigation and bankruptcy checks for companies and debtors.

## E-DISCOVERY AND LEGAL VENDORS

Sync your system to PACER to automate legal marketing.