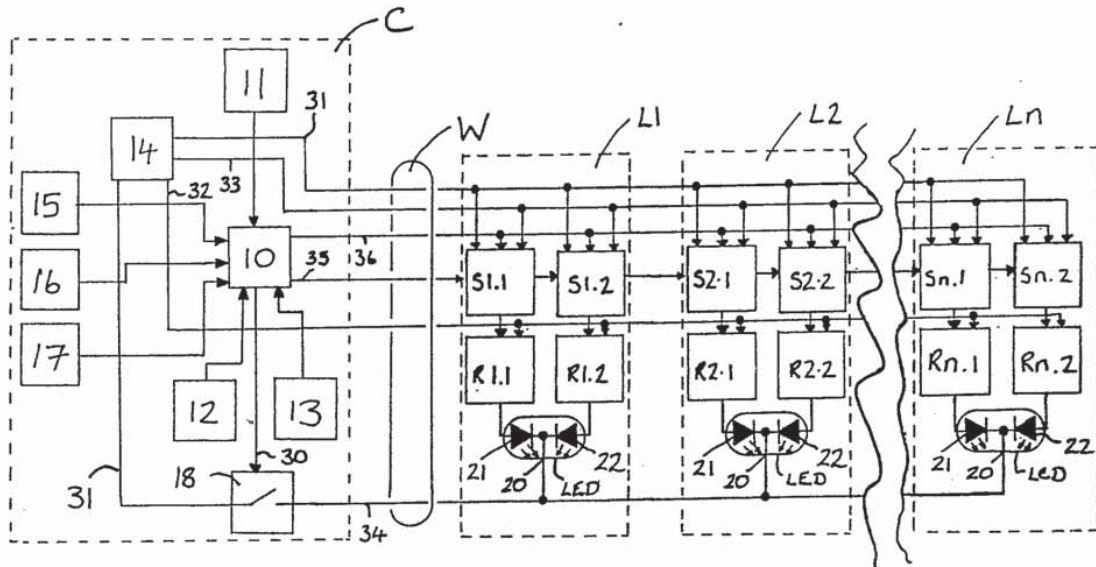




INTERNATIONAL APPLICATION PUBLISHED UNDER THE PATENT COOPERATION TREATY (PCT)

<p>(51) International Patent Classification ⁵ : H05B 37/02, G05F 3/00</p>	<p>A1</p>	<p>(11) International Publication Number: WO 91/19411 (43) International Publication Date: 12 December 1991 (12.12.91)</p>
<p>(21) International Application Number: PCT/GB91/00843 (22) International Filing Date: 28 May 1991 (28.05.91) (30) Priority data: 9011748.2 25 May 1990 (25.05.90) GB (71)(72) Applicant and Inventor: GOMOLUCH, Mark, Stephen [GB/GB]; "Overdale", Park Place, Newbridge, Gwent NP1 4RN (GB). (74) Agent: GIBSON, Stewart, Harry; Urquhart-Dykes & Lord, Business Technology Centre, Senghennydd Road, Cardiff CF2 4AY (GB).</p>	<p>(81) Designated States: AT, AT (European patent), AU, BB, BE (European patent), BF (OAPI patent), BG, BJ (OAPI patent), BR, CA, CF (OAPI patent), CG (OAPI patent), CH, CH (European patent), CI (OAPI patent), CM (OAPI patent), DE, DE (European patent), DK, DK (European patent), ES, ES (European patent), FI, FR (European patent), GA (OAPI patent), GB, GB (European patent), GN (OAPI patent), GR (European patent), HU, IT (European patent), JP, KP, KR, LK, LU, LU (European patent), MC, MG, ML (OAPI patent), MR (OAPI patent), MW, NL, NL (European patent), NO, PL, RO, SD, SE, SE (European patent), SN (OAPI patent), SU, TD (OAPI patent), TG (OAPI patent), US.</p> <p>Published <i>With international search report. Before the expiration of the time limit for amending the claims and to be republished in the event of the receipt of amendments.</i></p>	

(54) Title: LIGHTING CONTROL SYSTEM



(57) Abstract

A lighting controller comprises a series of data storage elements S1.1 - Sn.2 for controlling light sources LED connected to each element. The data storage elements S1.1 - Sn.2 are connected in series on a data wire (35) to a microprocessor (10) which outputs a series of data bits to control the light sources. By advancing the data bits along the data wire (35) through successive storage elements S1.1 - Sn.2, the lighting pattern can be changed.

Santa's Best and Polygroup

FOR THE PURPOSES OF INFORMATION ONLY

Codes used to identify States party to the PCT on the front pages of pamphlets publishing international applications under the PCT.

AT	Austria	ES	Spain	MG	Madagascar
AU	Australia	FI	Finland	ML	Mali
BB	Barbados	FR	France	MN	Mongolia
BE	Belgium	GA	Gabon	MR	Mauritania
BF	Burkina Faso	GB	United Kingdom	MW	Malawi
BG	Bulgaria	GN	Guinea	NL	Netherlands
BJ	Benin	GR	Greece	NO	Norway
BR	Brazil	HU	Hungary	PL	Poland
CA	Canada	IT	Italy	RO	Romania
CF	Central African Republic	JP	Japan	SD	Sudan
CG	Congo	KP	Democratic People's Republic of Korea	SE	Sweden
CH	Switzerland	KR	Republic of Korea	SN	Senegal
CI	Côte d'Ivoire	LI	Liechtenstein	SU	Soviet Union
CM	Cameroon	LK	Sri Lanka	TD	Chad
CS	Czechoslovakia	LU	Luxembourg	TC	Togo
DE	Germany	MC	Monaco	US	United States of America
DK	Denmark				

Lighting Control System

This invention relates to a lighting control system and more particularly but not solely to a control system for Christmas tree lights.

Christmas tree lights typically comprise a plurality of
5 low voltage filament lamps connected in series across the mains. Each lamp may be coated with a coloured lacquer of the same or different colour from adjacent lamps to emit a random or uniform pattern of coloured light. This pattern can only be varied by changing the lamp colour and has the disadvantage
10 that if one lamp becomes open circuit the other lamps will extinguish.

Flashing or pattern changing lights are known which use electronically controlled switches to make or break the mains supply to one or more series of low voltage filament lamps in
15 a set sequence. This system requires the use of many lamps and a large amount of wiring which is both expensive and unsightly.

Individually controllable lights are available that have one supply wire to each lamp and a common return wire, resulting in $n + 1$ wires required to control n lights. The
20 lights at the end of the chain will be dimmer than those at the start due to power losses caused by the resistance of the long lengths of wire.

We have now devised a lighting control system which has individually controllable lights and which does not require a
25 large number of control wires.

In accordance with this invention, there is provided a lighting control system comprising a plurality of data storage elements for controlling respective light sources according to their data content, the data storage elements being connected
30 in series along a data wire, and a control unit for generating a series of data bits and for advancing the data bits along the series of storage elements in serial manner, the data bits being advanced in groups of steps, which groups occur at predetermined intervals of time.

SUBSTITUTE SHEET

The number of steps in each group may be sufficient to advance a data bit or bits from the control unit to the last storage element in the series. Preferably each storage element holds one bit of information, which determines whether the respective light source is illuminated or extinguished. Preferably the pattern of data bits (or data word) differs for successive cycles (i.e. group of steps), and the time intervals between successive cycles may vary.

Preferably a microprocessor accesses stored patterns of data bits (or data words), and different ones of these are output on the different cycles. Preferably manual controls are provided for selecting any of the different patterns of data bits (data words) stored and for defining the time intervals between the successive cycles.

Preferably the light sources are extinguished as the data bits are advanced along the series of storage elements. Either the data bits are advanced at a rate greater than the response time of the light sources, or a supply line to the light sources may be interrupted during the bit-advancing cycle.

Preferably several storage elements and alternate coloured light sources are grouped together so that one or more of the light sources can be illuminated to form a more complex colour.

An embodiment of this invention will now be described by way of example only and with reference to the accompanying drawing, the single Figure of which is a block diagram of a lighting control system in accordance with this invention.

Referring to the drawing, there is shown a block diagram of a lighting control system comprising a control unit C to which a plurality of light units L1, L2, ... Ln are connected via a cable W. The control unit comprises a microprocessor 10 connected to a pattern and program store 11. Optionally a read/write store 15, display 16, and communications link 17 may also be connected to the microprocessor 10 and two external switches 12, 13 are provided which give direct user control of the microprocessor 10. A blanking control wire 30 controls a switch 18 that makes or breaks the OV supply or ground return connection to light

SUBSTITUTE SHEET

emitters LED in the respective light units L1 - Ln. A power supply unit 14 has +10V, +5V and 0V outputs connected to wires 32, 33, 31 of the cable W, which also includes a ground return wire 34 connected to switch 18 and data and clock wires 35, 36 which are output from the microprocessor 10. The light units L1, L2, Ln are situated at predetermined intervals along the cable W.

Light unit L1 comprises a tri-colour light emitter LED which comprises red and green light emitting diodes 21, 22 connected together by their cathodes to form a single cathode wire 20 connected to the ground return wire 34. The diodes 21, 22 have their anodes connected to respective storage elements S1.1, S1.2 via regulator/buffer circuits R1.1 and R1.2. The storage elements S1.1, S1.2 are wired in parallel to the 5V, 0V, and clock wires 33, 31, 36 of the cable W, and the regulator/buffer circuits R1.1, R1.2 are similarly connected to the 10V wire 32. The data wire 35 from the microprocessor 10 feeds the first storage element S1.1, the output of which feeds the second storage element S1.2. The output of this element S1.2 likewise feeds the first storage element S2.1 of the next light under L2 on the cable W, and so on. All of the light units are identical in construction to light unit L1, and are connected in parallel to the wires of the cable W, with the exception of the data wire 35 which is connected in the above described manner through each storage element S in series. The system may include any number of the light units L1 - Ln.

In use the desired lighting pattern, and the rate at which the pattern changes may be selected using the rotary switches 12, 13. The microprocessor monitors which pattern sequence is required and calls up a predefined bit pattern stored in the read-only memory 11. If there are 40 light units L on the cable W, there will therefore be 80 storage elements S each capable of storing one bit. The pre-defined bit pattern is clocked at high-speed in serial fashion along the data line 35 through each storage element S in blocks of 80 bits. The lighting pattern is decoded once the clock has stopped and the microprocessor 10 has closed the switch 18 to connect the ground return to the cathodes 20 of the light emitting diodes. The speed at which the pattern changes depends upon the time

SUBSTITUTE SHEET

Explore Litigation Insights

Docket Alarm provides insights to develop a more informed litigation strategy and the peace of mind of knowing you're on top of things.

Real-Time Litigation Alerts



Keep your litigation team up-to-date with **real-time alerts** and advanced team management tools built for the enterprise, all while greatly reducing PACER spend.

Our comprehensive service means we can handle Federal, State, and Administrative courts across the country.

Advanced Docket Research



With over 230 million records, Docket Alarm's cloud-native docket research platform finds what other services can't. Coverage includes Federal, State, plus PTAB, TTAB, ITC and NLRB decisions, all in one place.

Identify arguments that have been successful in the past with full text, pinpoint searching. Link to case law cited within any court document via Fastcase.

Analytics At Your Fingertips



Learn what happened the last time a particular judge, opposing counsel or company faced cases similar to yours.

Advanced out-of-the-box PTAB and TTAB analytics are always at your fingertips.

API

Docket Alarm offers a powerful API (application programming interface) to developers that want to integrate case filings into their apps.

LAW FIRMS

Build custom dashboards for your attorneys and clients with live data direct from the court.

Automate many repetitive legal tasks like conflict checks, document management, and marketing.

FINANCIAL INSTITUTIONS

Litigation and bankruptcy checks for companies and debtors.

E-DISCOVERY AND LEGAL VENDORS

Sync your system to PACER to automate legal marketing.