



US006285140B1

(12) **United States Patent**  
**Ruxton**

(10) **Patent No.:** **US 6,285,140 B1**  
(45) **Date of Patent:** **Sep. 4, 2001**

(54) **VARIABLE-EFFECT LIGHTING SYSTEM**

(75) Inventor: **James Ruxton, Toronto (CA)**

(73) Assignee: **Pharos Innovations Inc., Toronto (CA)**

(\* ) Notice: Subject to any disclaimer, the term of this patent is extended or adjusted under 35 U.S.C. 154(b) by 0 days.

4,866,580	9/1989	Blackerby .....	362/205
5,008,595	4/1991	Kazar .....	315/178
5,384,519	1/1995	Gotoh .....	315/324
5,420,482	5/1995	Phares .....	315/292
5,619,182	4/1997	Robb .....	340/479
5,629,587 *	5/1997	Gray et al. ....	315/314
5,749,646	5/1998	Brittall .....	362/231
5,752,766	5/1998	Bailey et al. ....	362/250
5,924,784 *	7/1999	Chliwnyj et al. ....	362/234

\* cited by examiner

(21) Appl. No.: **09/295,367**

(22) Filed: **Apr. 21, 1999**

(51) Int. Cl.<sup>7</sup> ..... **H05B 37/00**

(52) U.S. Cl. .... **315/312; 315/291; 315/309; 315/315**

(58) **Field of Search** ..... 315/185 S, 193, 315/194, 195, 291, 307, 308, 305, 312, 315, 316, 324; 362/234

(56) **References Cited**

**U.S. PATENT DOCUMENTS**

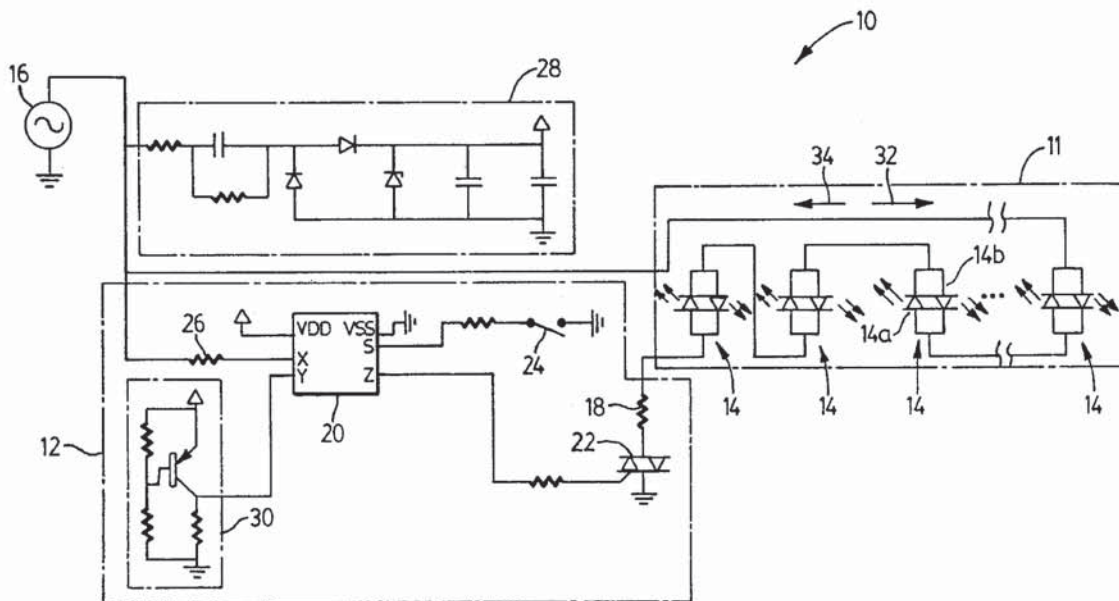
1,809,181	6/1931	Ramsden .	
2,515,236	7/1950	Kunins .....	240/3.1
3,283,136	11/1966	Dinkler et al. ....	240/10
3,324,289	6/1967	Cirko .....	240/10.1
3,379,869	4/1968	Dorman .....	240/41.3
3,388,245	6/1968	Larsen .....	240/3.1
3,435,286	3/1969	Kayatt .....	315/47
3,789,211	1/1974	Kramer .....	240/10 R
4,317,071	2/1982	Murad .....	315/312

*Primary Examiner*—David Vu  
*Assistant Examiner*—Thuy Vinh Tran  
(74) *Attorney, Agent, or Firm*—Gowling Lafleur Henderson LLP

(57) **ABSTRACT**

A variable-effect lighting system includes a lamp assembly, and a programmable lamp controller. The lamp assembly comprises a string of bicolored lamps, each bicolored lamp including a first illuminating element for producing a first color of light, and a second illuminating element for producing a second color of light. The programmable lamp controller is coupled to the lamp assembly for setting the conduction angle of the illuminating elements according to at least one predetermined pattern stored in a memory of the lamp controller. Preferably, the controller includes a user-operable input to allow the user to select the predetermined pattern and hence the color display as desired.

**21 Claims, 8 Drawing Sheets**



Santa's Best and Polygroup  
Exhibit 1001

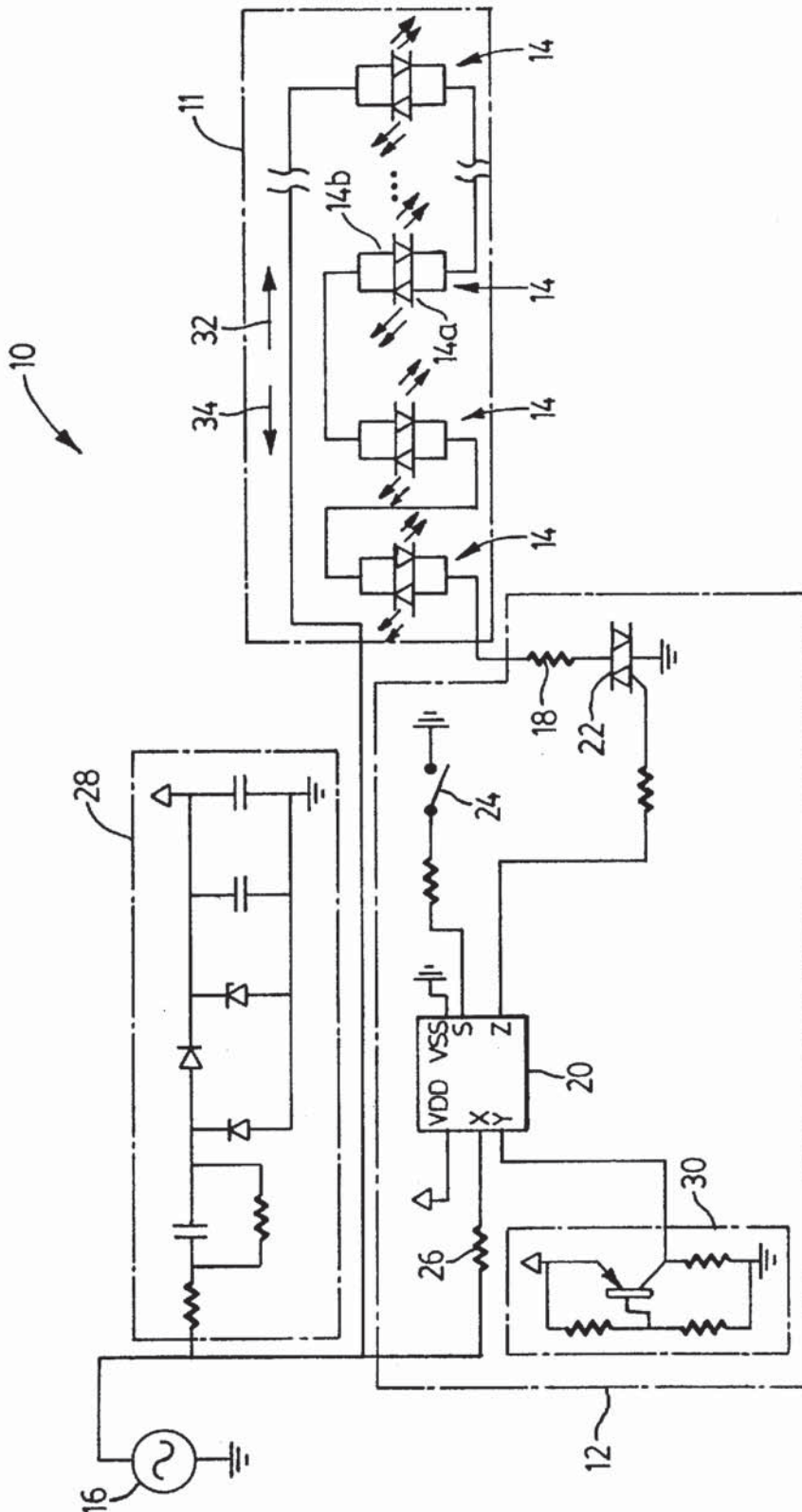


FIG. 1a

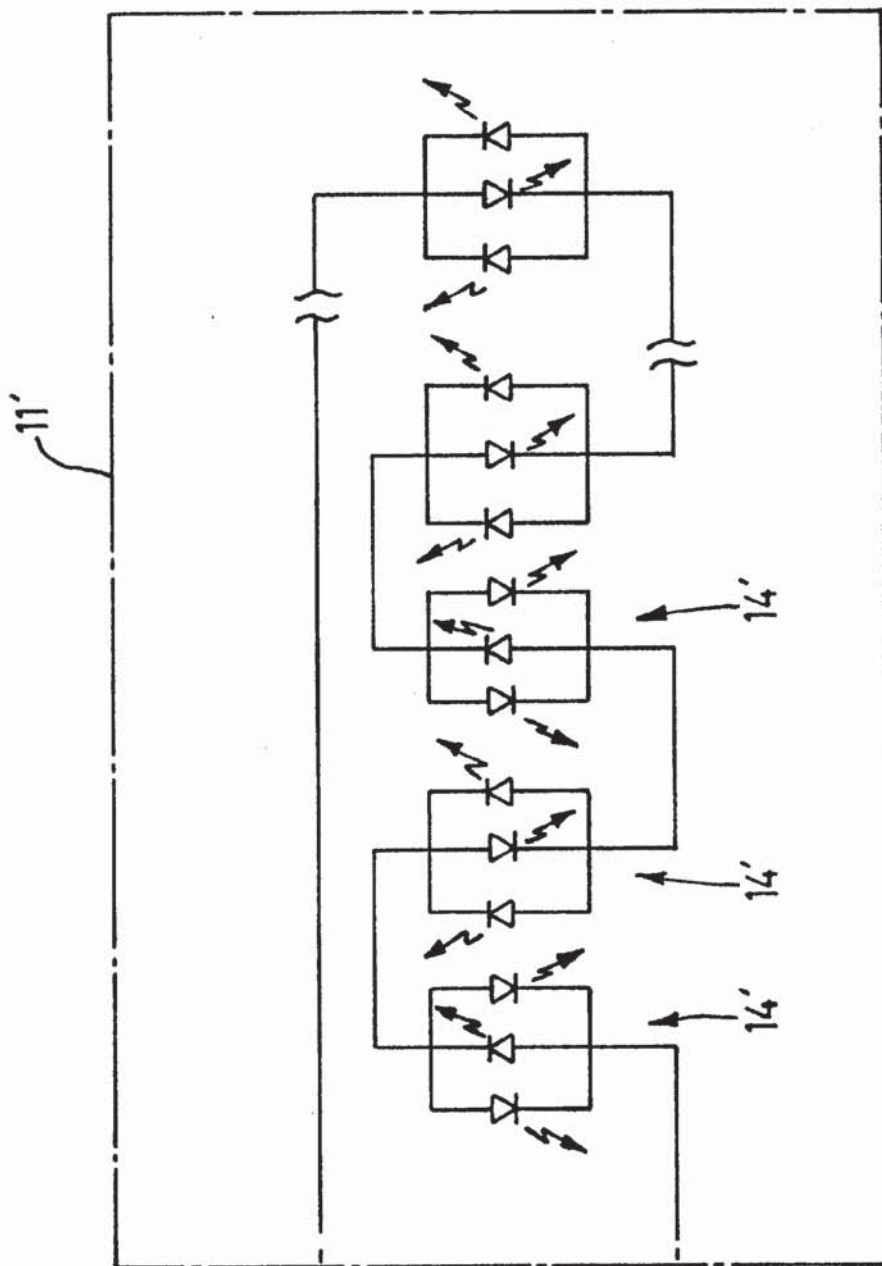


FIG. 1b

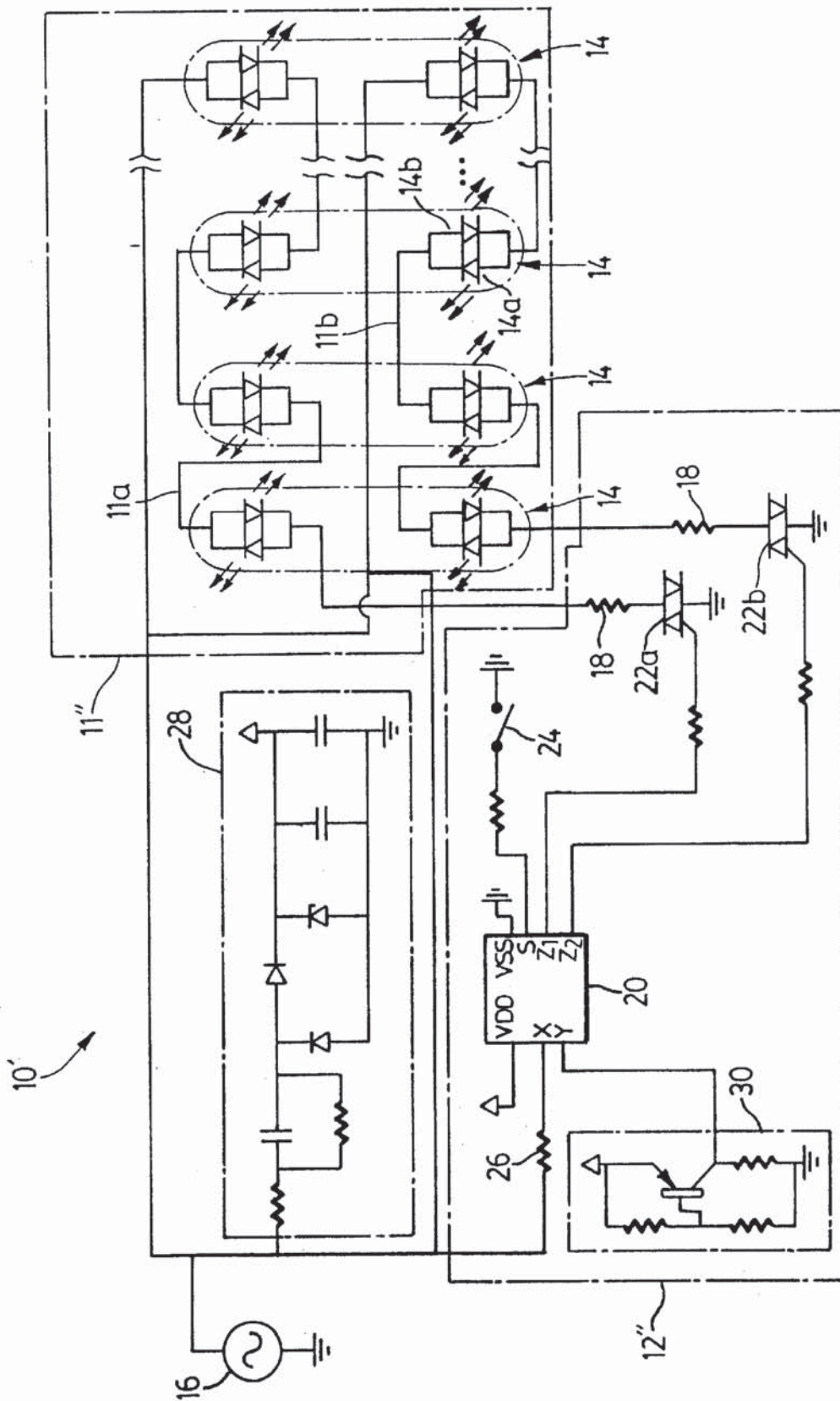


FIG. 1c

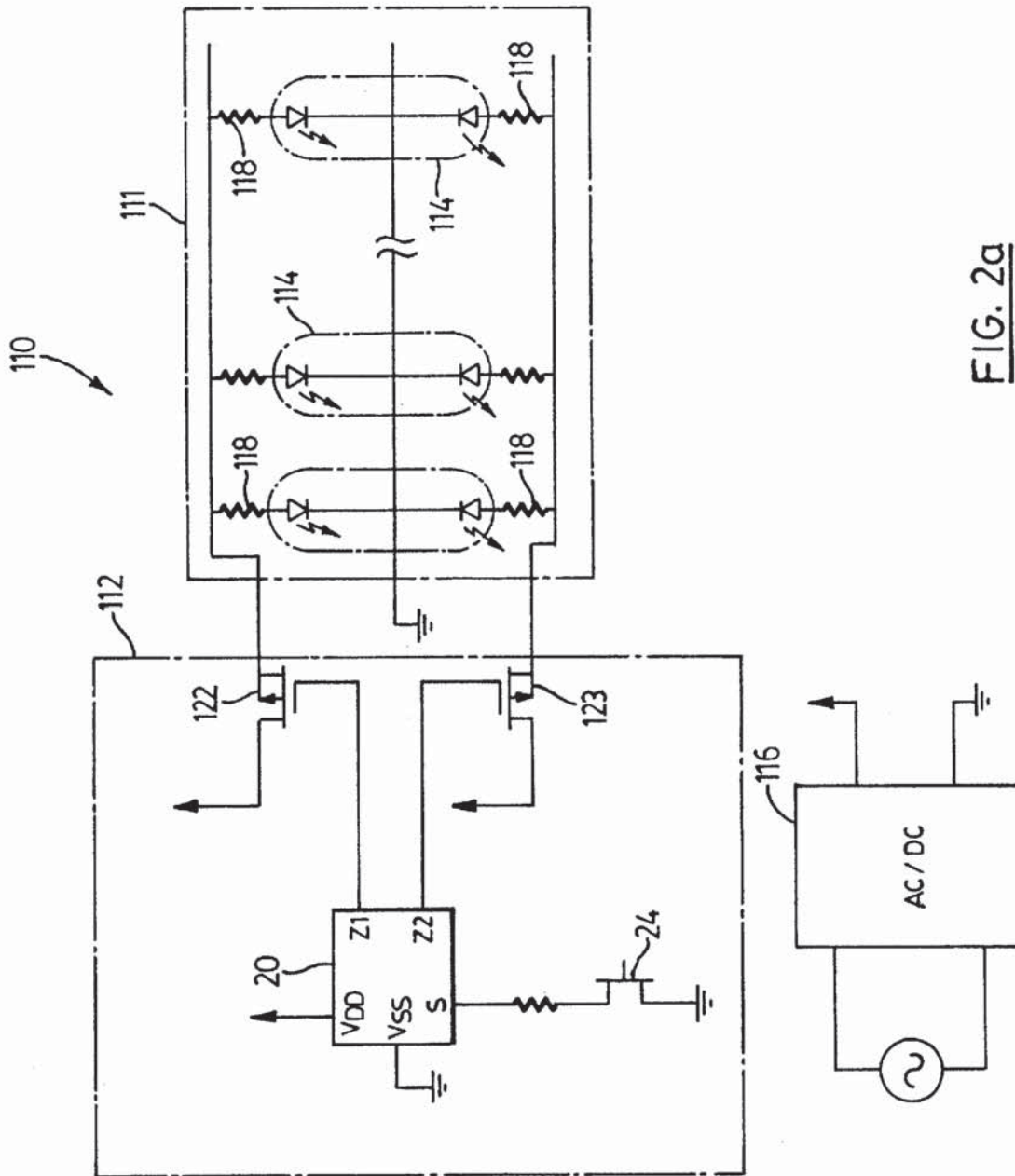


FIG. 2a

# Explore Litigation Insights

Docket Alarm provides insights to develop a more informed litigation strategy and the peace of mind of knowing you're on top of things.

## Real-Time Litigation Alerts



Keep your litigation team up-to-date with **real-time alerts** and advanced team management tools built for the enterprise, all while greatly reducing PACER spend.

Our comprehensive service means we can handle Federal, State, and Administrative courts across the country.

## Advanced Docket Research



With over 230 million records, Docket Alarm's cloud-native docket research platform finds what other services can't. Coverage includes Federal, State, plus PTAB, TTAB, ITC and NLRB decisions, all in one place.

Identify arguments that have been successful in the past with full text, pinpoint searching. Link to case law cited within any court document via Fastcase.

## Analytics At Your Fingertips



Learn what happened the last time a particular judge, opposing counsel or company faced cases similar to yours.

Advanced out-of-the-box PTAB and TTAB analytics are always at your fingertips.

## API

Docket Alarm offers a powerful API (application programming interface) to developers that want to integrate case filings into their apps.

## LAW FIRMS

Build custom dashboards for your attorneys and clients with live data direct from the court.

Automate many repetitive legal tasks like conflict checks, document management, and marketing.

## FINANCIAL INSTITUTIONS

Litigation and bankruptcy checks for companies and debtors.

## E-DISCOVERY AND LEGAL VENDORS

Sync your system to PACER to automate legal marketing.