



US007873503B2

(12) **United States Patent**  
**Loomans et al.**

(10) **Patent No.:** **US 7,873,503 B2**  
(45) **Date of Patent:** **Jan. 18, 2011**

(54) **METHOD, SYSTEM, AND PRODUCT FOR PERFORMING SUB-CONFIGURATION OF ENTITIES**

(75) Inventors: **Jeffrey William Loomans**, San Francisco, CA (US); **Lisa Ann Laane**, Cupertino, CA (US)

(73) Assignee: **Siebel Systems, Inc.**, San Mateo, CA (US)

(\* ) Notice: Subject to any disclaimer, the term of this patent is extended or adjusted under 35 U.S.C. 154(b) by 1320 days.

5,499,357	A *	3/1996	Sonty et al.	710/104
5,515,524	A *	5/1996	Lynch et al.	703/13
5,815,415	A *	9/1998	Bentley et al.	703/4
5,970,242	A *	10/1999	O'Connor et al.	717/100
6,223,342	B1 *	4/2001	George	717/116
6,237,139	B1 *	5/2001	Hotta et al.	717/126
6,256,773	B1 *	7/2001	Bowman-Amuah	717/121
6,289,382	B1 *	9/2001	Bowman-Amuah	709/226
6,711,688	B1 *	3/2004	Hubacher et al.	726/7
6,717,595	B1 *	4/2004	Yennaco	715/765
6,758,757	B2 *	7/2004	Luciano et al.	463/43
6,854,052	B2 *	2/2005	Beeston et al.	713/1
6,996,711	B2 *	2/2006	Patterson et al.	713/156

\* cited by examiner

*Primary Examiner*—Paul L Rodriguez  
*Assistant Examiner*—Eunhee Kim

(74) *Attorney, Agent, or Firm*—Campbell Stephenson LLP

(21) Appl. No.: **10/299,215**

(22) Filed: **Nov. 18, 2002**

(65) **Prior Publication Data**

US 2010/0204970 A1 Aug. 12, 2010

**Related U.S. Application Data**

(63) Continuation of application No. 09/967,852, filed on Sep. 28, 2001, now abandoned.

(51) **Int. Cl.**  
**G06F 17/50** (2006.01)  
**G06F 9/44** (2006.01)

(52) **U.S. Cl.** ..... **703/13; 717/116**

(58) **Field of Classification Search** ..... **703/13, 703/22; 717/121, 116**

See application file for complete search history.

(56) **References Cited**

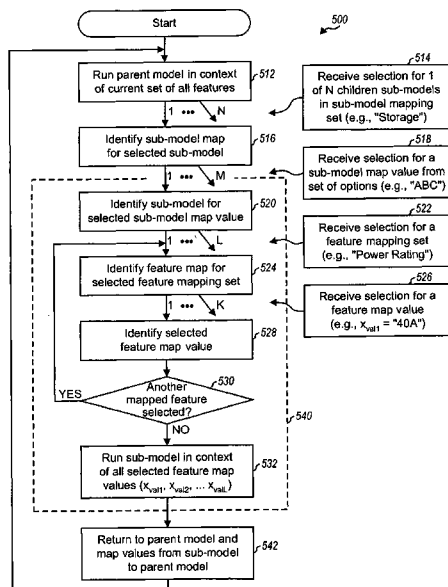
**U.S. PATENT DOCUMENTS**

5,247,683 A \* 9/1993 Holmes et al. .... 709/221

(57) **ABSTRACT**

Techniques to performing sub-configuration of components of an entity. In one method, the entity is configured via a parent model and each sub-configurable component is configured via one of a number of sub-models. Initially a selection to configure a particular sub-configurable component of the entity is received, and a sub-model for the selected component is identified. One or more values for one or more features of the selected component are received (e.g., from the parent model or via the sub-model) and form a configuration for the component, which is then validated based on the associated sub-model and the received values. Configuration of the entity is also validated based on the parent model and the validated configuration for the selected component. Feedbacks may be provided for each configuration of the parent model and sub-models. The data for the parent model and sub-models may be localized or globalized.

**29 Claims, 11 Drawing Sheets**



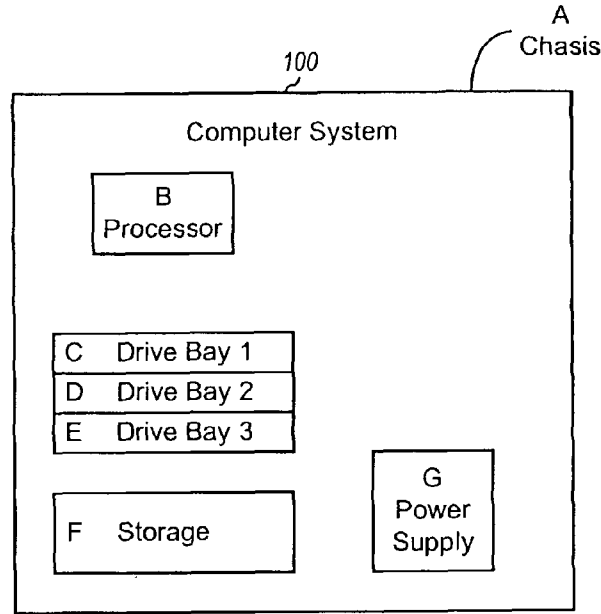


FIG. 1

250

A Chassis	B Processor	C Drive Bay 1	D Drive Bay 2	E Drive Bay 3	F Storage	G Supply
short	P4 1.0GHz	Floppy	32xCD	6.4 GB	None	20 A
medium	P4 1.0GHz	Floppy	32xCD	6.4 GB	None	20 A
tall	P4 1.0GHz	Floppy	32xCD	6.4 GB	None	20 A
short	P4 1.3GHz	Floppy	32xCD	6.4 GB	None	20 A
⋮						

FIG. 2B

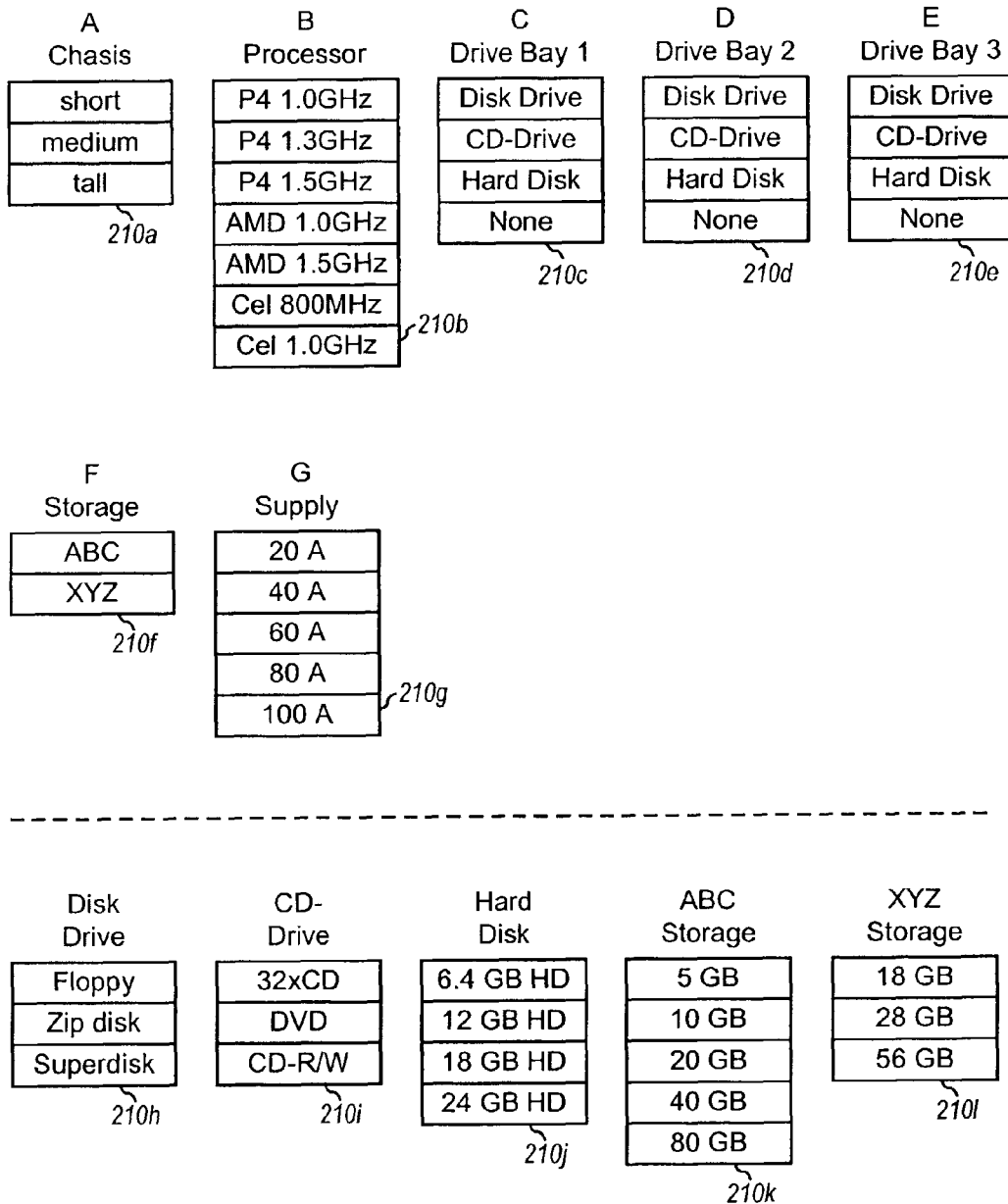


FIG. 2A

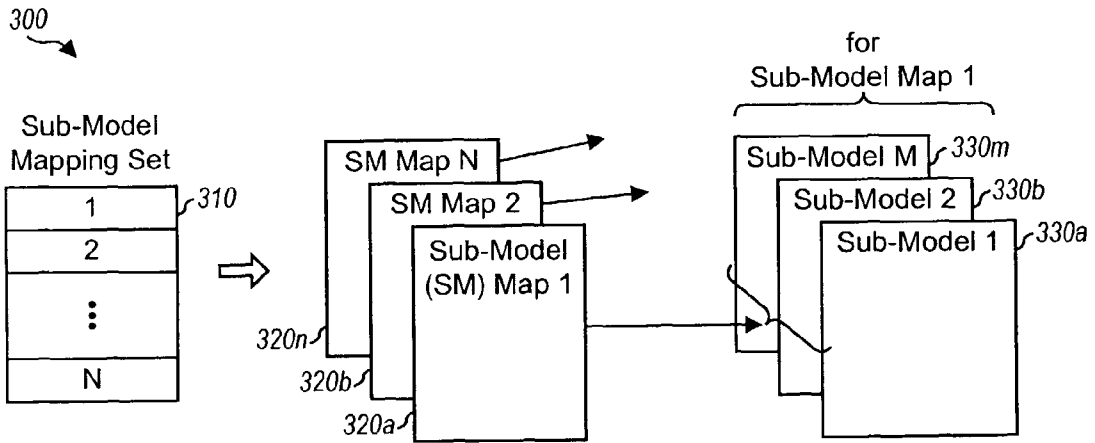


FIG. 3A

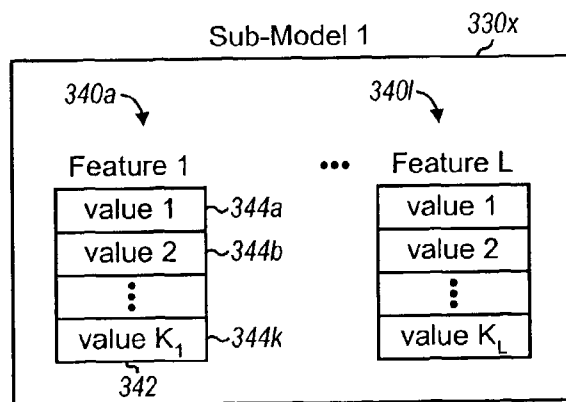


FIG. 3B

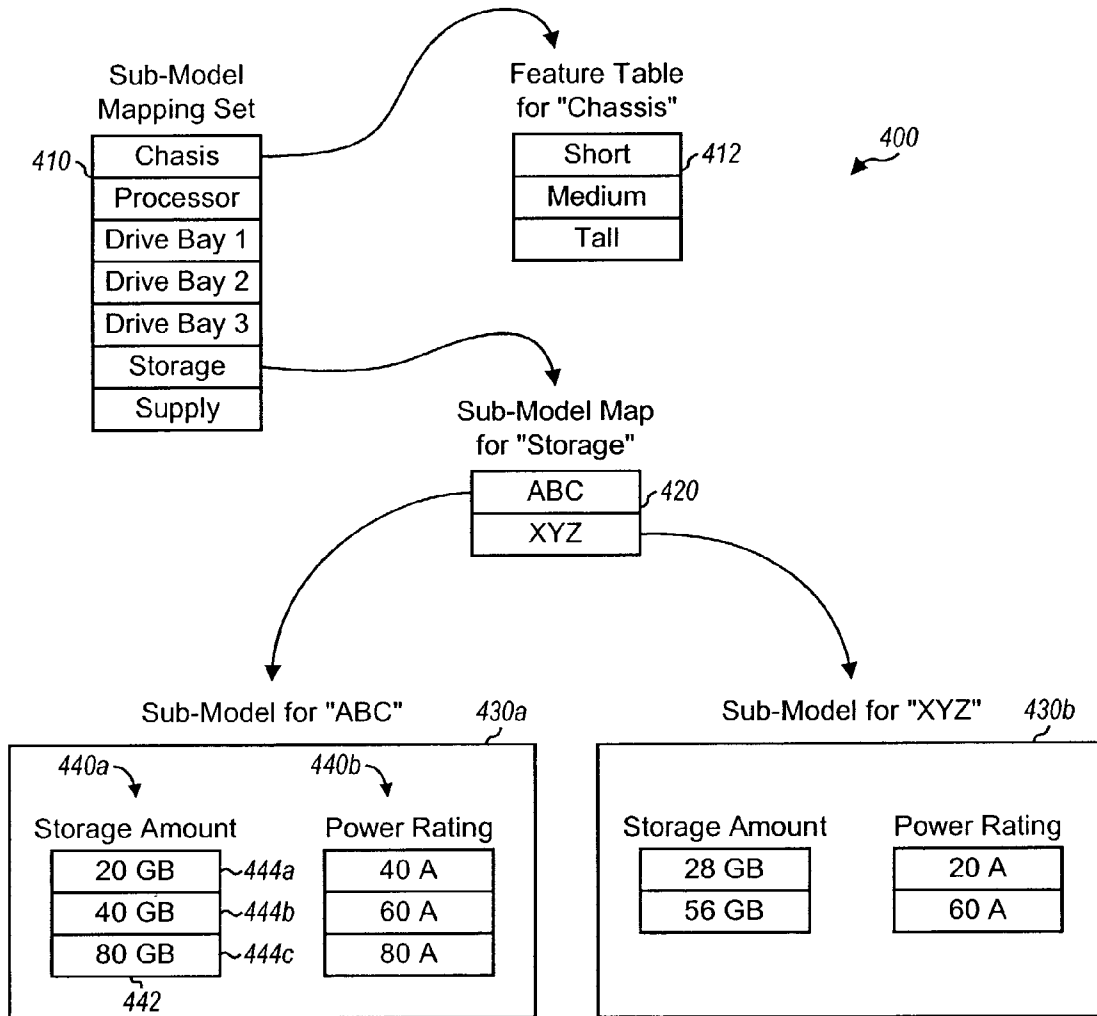


FIG. 4

# Explore Litigation Insights

Docket Alarm provides insights to develop a more informed litigation strategy and the peace of mind of knowing you're on top of things.

## Real-Time Litigation Alerts



Keep your litigation team up-to-date with **real-time alerts** and advanced team management tools built for the enterprise, all while greatly reducing PACER spend.

Our comprehensive service means we can handle Federal, State, and Administrative courts across the country.

## Advanced Docket Research



With over 230 million records, Docket Alarm's cloud-native docket research platform finds what other services can't. Coverage includes Federal, State, plus PTAB, TTAB, ITC and NLRB decisions, all in one place.

Identify arguments that have been successful in the past with full text, pinpoint searching. Link to case law cited within any court document via Fastcase.

## Analytics At Your Fingertips



Learn what happened the last time a particular judge, opposing counsel or company faced cases similar to yours.

Advanced out-of-the-box PTAB and TTAB analytics are always at your fingertips.

## API

Docket Alarm offers a powerful API (application programming interface) to developers that want to integrate case filings into their apps.

## LAW FIRMS

Build custom dashboards for your attorneys and clients with live data direct from the court.

Automate many repetitive legal tasks like conflict checks, document management, and marketing.

## FINANCIAL INSTITUTIONS

Litigation and bankruptcy checks for companies and debtors.

## E-DISCOVERY AND LEGAL VENDORS

Sync your system to PACER to automate legal marketing.