

NetRemote LE Setup Guide

This guide explains how to setup the **NetRemote MediaBridge** plugin for J. River's Media Center. For problems with network configuration, please see the **NetRemote LE Network Configuration Guide**.

Start either the NetRemote Windows or Pocket PC client.

Open the **Properties Page**.

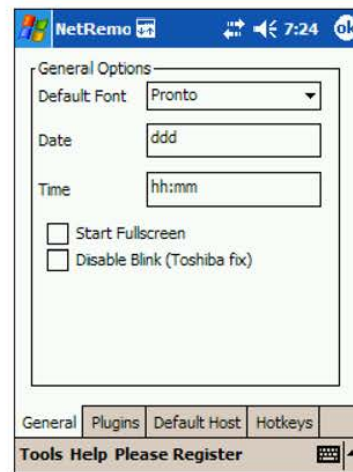
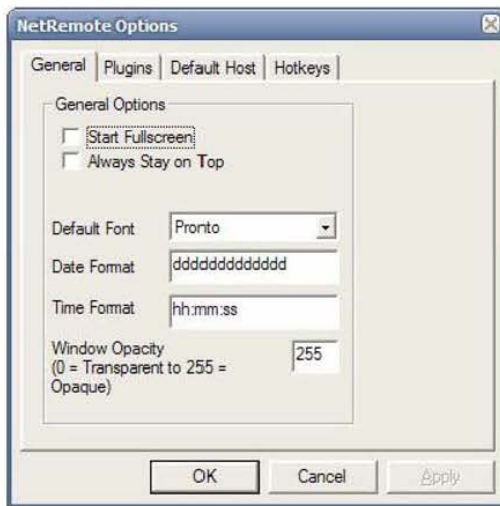
For the Windows client, click **File/Properties**.



For the Pocket PC client, tap **Tools/Properties**.



General Tab



Start Full Screen sets NetRemote to start up full screen.

Always On Top Option (Windows Client Only) keeps NetRemote always visible.

Default Font sets the font used to draw buttons and labels. In most instances, this should not be changed.

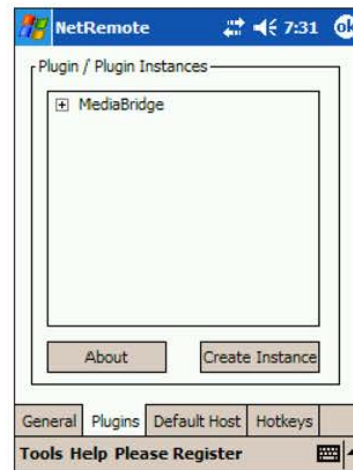
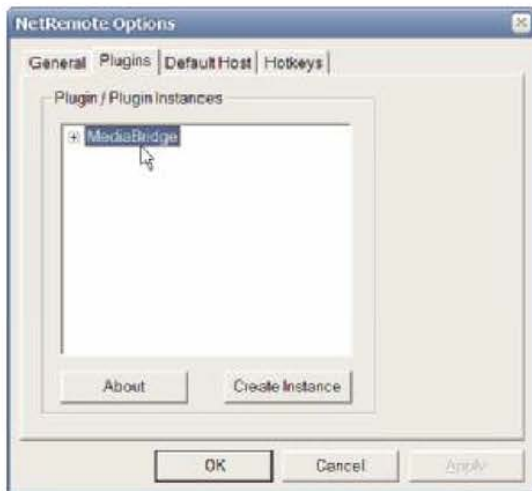
Date Format controls how the day of the week is displayed. Each "d" represents one letter, ie. "ddd" for Monday will show "Mon".

Time Format controls how the time is displayed. "hh:mm:ss" will show the hour, minute, second.

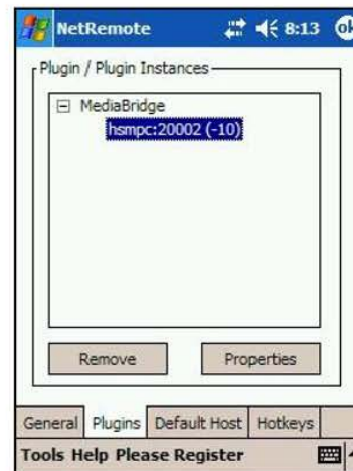
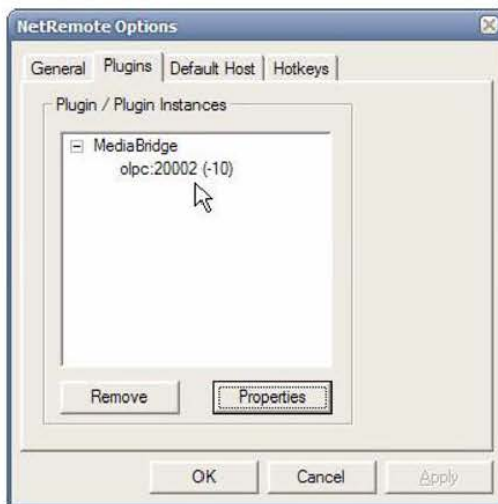
Window Opacity (Windows Client Only) is used to make the NetRemote window transparent. Values less than 200 are not recommended. This setting is useful with the Always On Top option.

Plugins Tab

On this tab, the list of NetRemote plugins are displayed. In the LE or IR editions of NetRemote, this is limited to the MediaBridge and IR plugins respectively.



Each plugin can have multiple "instances". This allows NetRemote to communicate with more than one server. For instance, you could have Media Center running on multiple computers. Click on the plus sign to view a list of connections. The screen will change as shown below.



To change the configuration of an instance of the plugin, click on it to highlight it and then click on **Properties**. This will bring up the next dialog box.

MediaBridge Properties



JRMPC Plugin

Host: HSMPC

Port: 20002

Default Img Size: XLarge

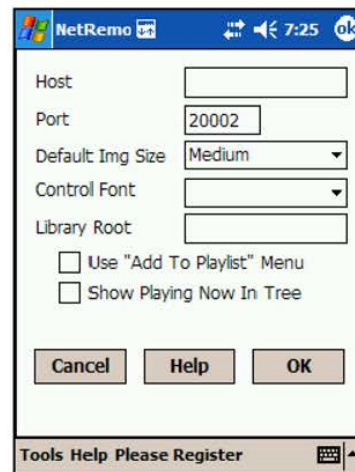
Control Font: Verdana

Library Root:

Use "Add To Playlist" Menu

Show Playing Now In Tree

Cancel Help OK



NetRemo

Host:

Port: 20002

Default Img Size: Medium

Control Font:

Library Root:

Use "Add To Playlist" Menu

Show Playing Now In Tree

Cancel Help OK

Tools Help Please Register

Host specifies the computer that this instance of the plugin connects to. This can be the computer name or the IP address.

Port specifies the port that NetRemote uses.

Default Img Size is the size of cover art images that NetRemote will use. On windows clients use **Large** or **XLarge**. On Pocket PC devices, you may want to use **Medium** or smaller. This is done for performance reasons.

Control Font specifies the font used to display the media library and playing now lists.

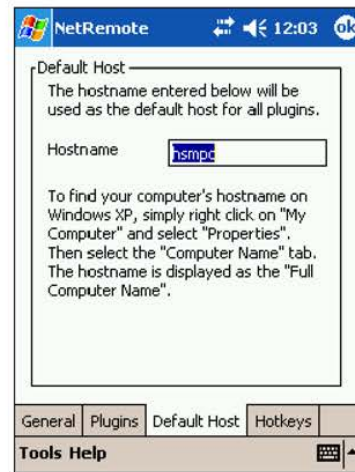
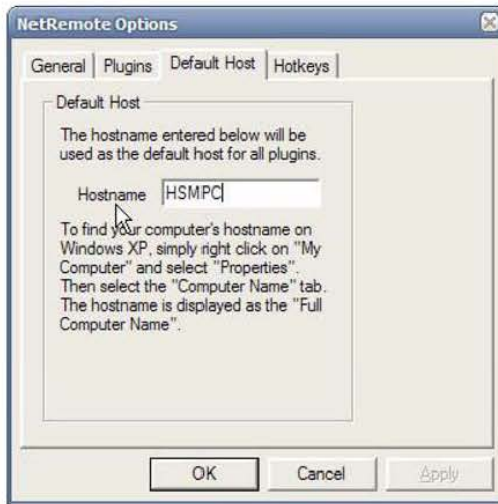
Library Root is used with Media Center. It specifies where in the Media Library that NetRemote should begin displaying from.

Use "Add to Playlist" Menu adds the option to add songs to a playlist in Media Center. This option may cause performance problems on slower Pocket PC clients.

Show Playing Now in Tree will display the currently playing songs in the Media Library tree.

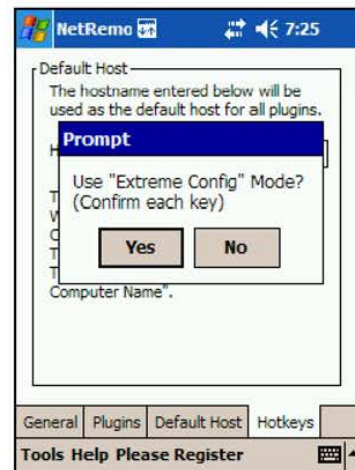
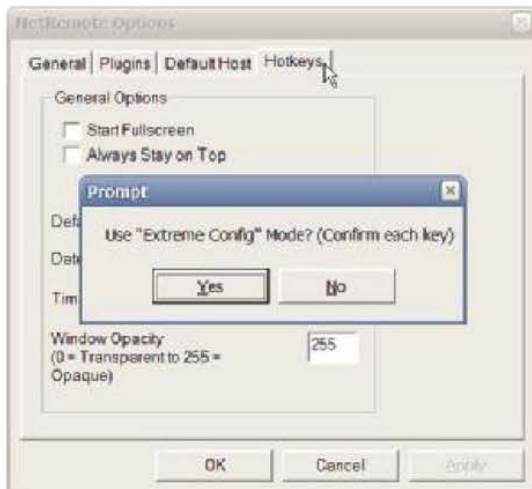
Press **OK** to save you changes.

Default Host Tab



Default Host specifies with host computer NetRemote should connect with first. Enter either the computer name or IP address in this box. Click **OK** when done.

HotKeys Tab



The **Extreme Config** mode is usually not necessary. Click **NO** unless you are having problems configuring your device.

Explore Litigation Insights

Docket Alarm provides insights to develop a more informed litigation strategy and the peace of mind of knowing you're on top of things.

Real-Time Litigation Alerts



Keep your litigation team up-to-date with **real-time alerts** and advanced team management tools built for the enterprise, all while greatly reducing PACER spend.

Our comprehensive service means we can handle Federal, State, and Administrative courts across the country.

Advanced Docket Research



With over 230 million records, Docket Alarm's cloud-native docket research platform finds what other services can't. Coverage includes Federal, State, plus PTAB, TTAB, ITC and NLRB decisions, all in one place.

Identify arguments that have been successful in the past with full text, pinpoint searching. Link to case law cited within any court document via Fastcase.

Analytics At Your Fingertips



Learn what happened the last time a particular judge, opposing counsel or company faced cases similar to yours.

Advanced out-of-the-box PTAB and TTAB analytics are always at your fingertips.

API

Docket Alarm offers a powerful API (application programming interface) to developers that want to integrate case filings into their apps.

LAW FIRMS

Build custom dashboards for your attorneys and clients with live data direct from the court.

Automate many repetitive legal tasks like conflict checks, document management, and marketing.

FINANCIAL INSTITUTIONS

Litigation and bankruptcy checks for companies and debtors.

E-DISCOVERY AND LEGAL VENDORS

Sync your system to PACER to automate legal marketing.