

NetRemote LE Network Configuration Guide

Automatic Network Configuration

NetRemote works by "talking" to J. River Media Center (JRMC) over your network. It works with both wired and wireless networks. NetRemote is designed to automatically configure and connect to any computers on your network running JRMC. You must have your devices already connected to your network before configuring NetRemote.

Start J. River Media Center on your computer.

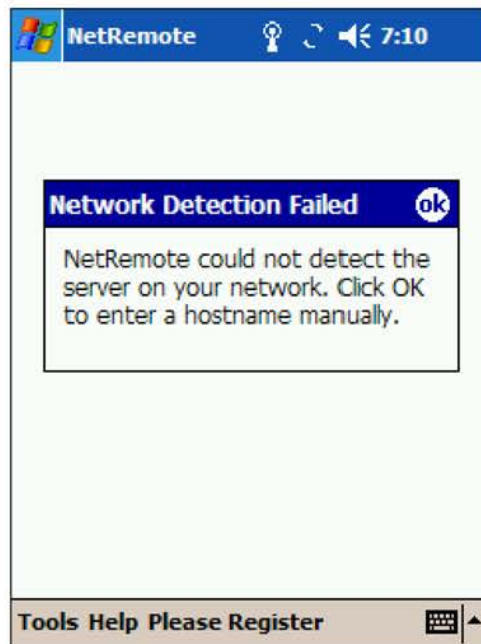
Start NetRemote (either the Windows or Pocket PC version). NetRemote will take a few seconds to examine your network and try and find any computer that is running JRMC. After NetRemote has completed this step, you will see a screen similar to below, depending on what Media Center is playing.



If NetRemote cannot connect to JRMC you will see this message on the Windows Client.



On the Pocket PC client you will see this message.



Proceed to the **Manual Configuration** guide below.

Manual Network Configuration

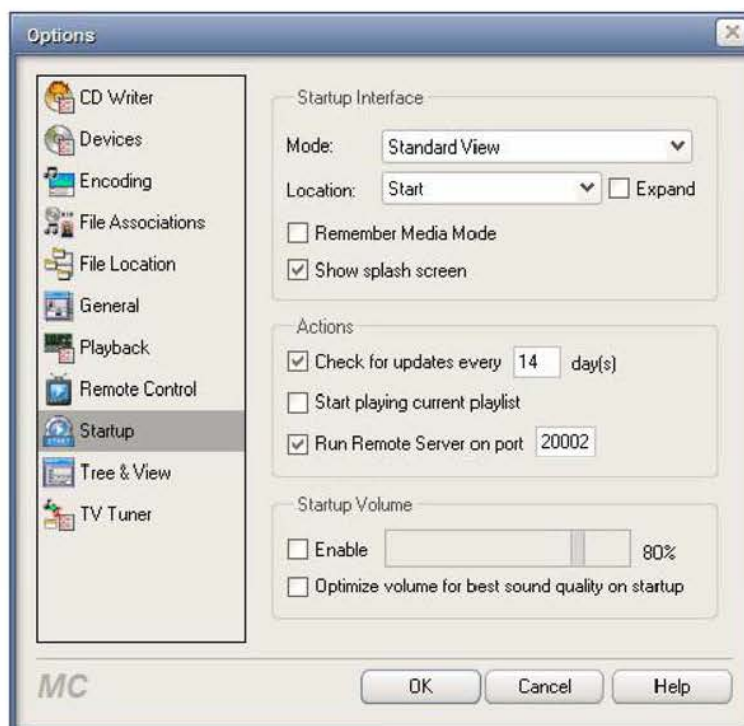
In some instances, depending on your network configuration and security settings, automatic configuration may not work. In this case, follow the steps below.

Step 1. Configure J. River Media Center (JRMC)

Start JRMC. Open up the **Options** dialog by pressing Ctrl-O or from the **Tools** Menu.



The **Options** dialog is then displayed. Select **Startup**. Under actions, check the **Run Remote Server** box and specify the port address. In most installations the default port of 20002 will work fine. Click **OK**. You are now finished setting up JRMC. Leave JRMC running.

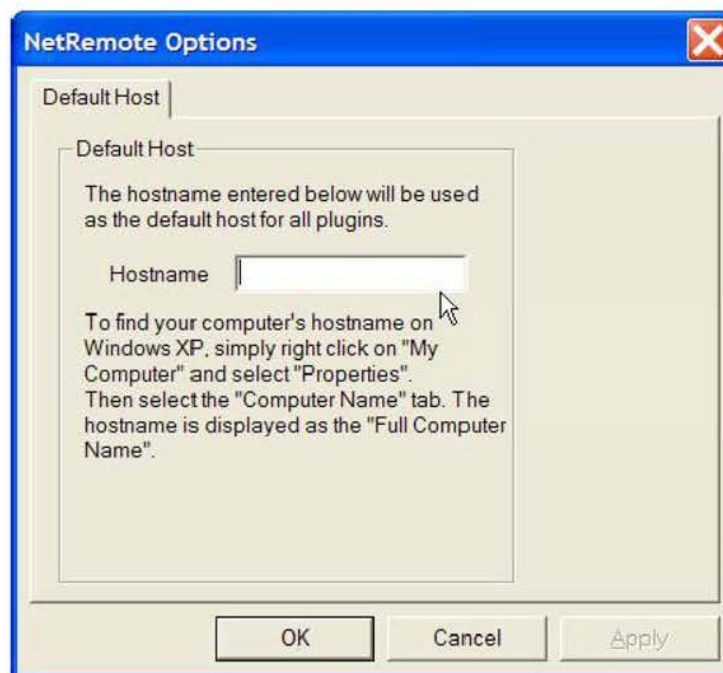


Step 2. Configure **NetRemote** for **Windows**.

Start NetRemote. If NetRemote cannot find JRMC, the screen below will be displayed.



Click **OK**.

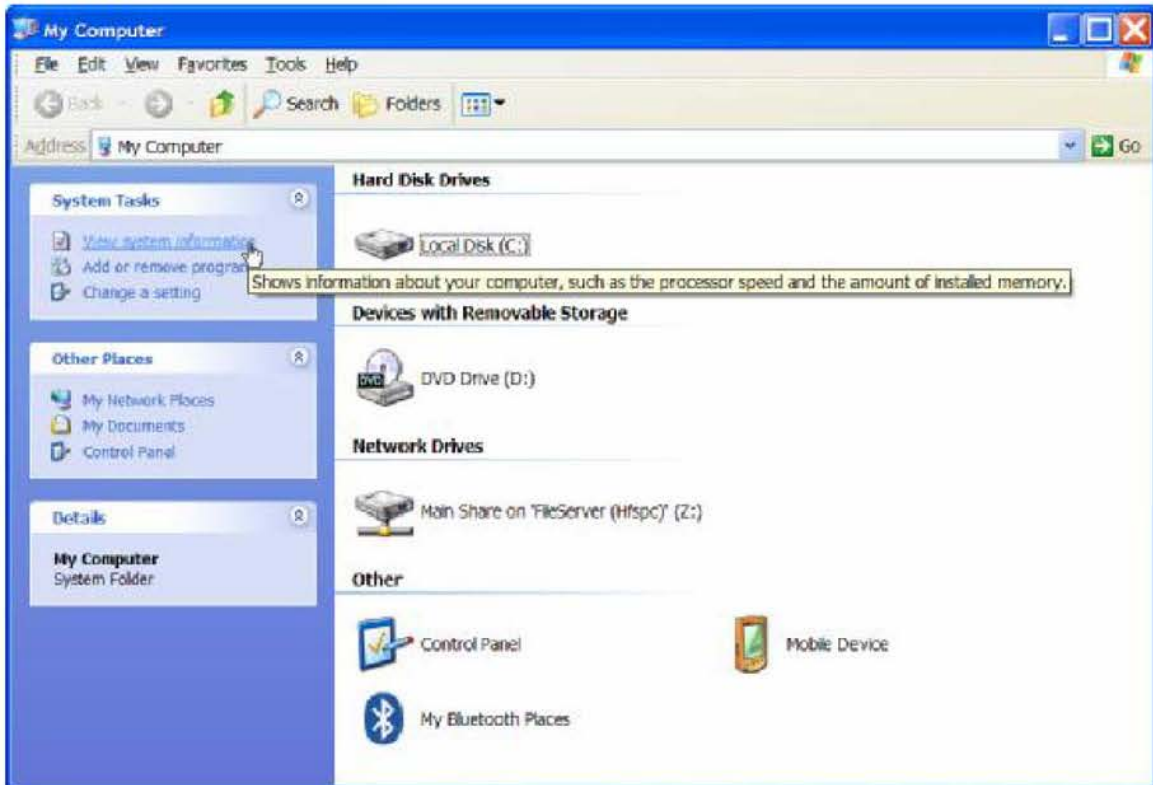


Enter the name or IP address of the computer running JRMC in to the Hostname box. Click **OK**. If you do not know the computer name or IP address, follow the steps below.

To find out your PC's **Computer Name**, press Start and select My Computer. Alternatively, double click the My Computer icon on your desktop.



Click on view system information.



Explore Litigation Insights

Docket Alarm provides insights to develop a more informed litigation strategy and the peace of mind of knowing you're on top of things.

Real-Time Litigation Alerts



Keep your litigation team up-to-date with **real-time alerts** and advanced team management tools built for the enterprise, all while greatly reducing PACER spend.

Our comprehensive service means we can handle Federal, State, and Administrative courts across the country.

Advanced Docket Research



With over 230 million records, Docket Alarm's cloud-native docket research platform finds what other services can't. Coverage includes Federal, State, plus PTAB, TTAB, ITC and NLRB decisions, all in one place.

Identify arguments that have been successful in the past with full text, pinpoint searching. Link to case law cited within any court document via Fastcase.

Analytics At Your Fingertips



Learn what happened the last time a particular judge, opposing counsel or company faced cases similar to yours.

Advanced out-of-the-box PTAB and TTAB analytics are always at your fingertips.

API

Docket Alarm offers a powerful API (application programming interface) to developers that want to integrate case filings into their apps.

LAW FIRMS

Build custom dashboards for your attorneys and clients with live data direct from the court.

Automate many repetitive legal tasks like conflict checks, document management, and marketing.

FINANCIAL INSTITUTIONS

Litigation and bankruptcy checks for companies and debtors.

E-DISCOVERY AND LEGAL VENDORS

Sync your system to PACER to automate legal marketing.