

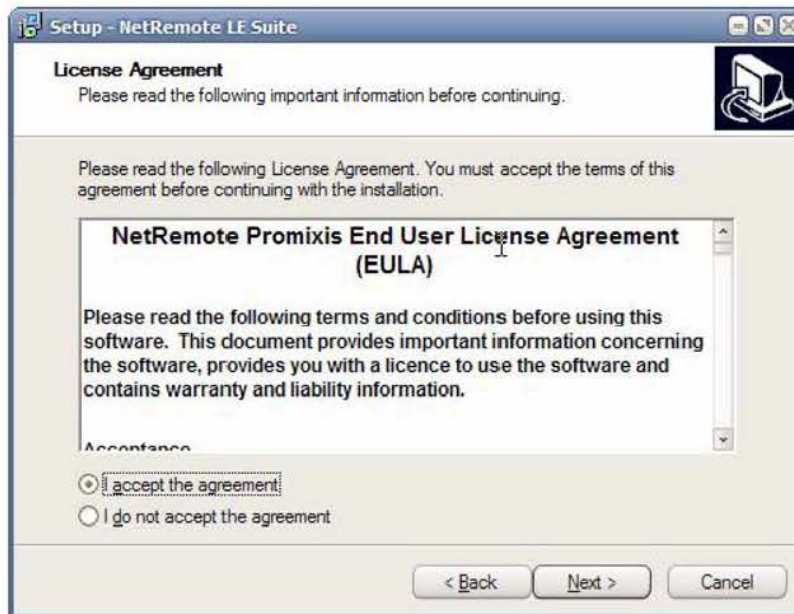
NetRemote LE Installation Guide for J. River Media Center

1. Download NetRemote.

Download NetRemote LE from [Promixis](#) and save the file on your computer (your Desktop is an easy place). You may delete the installation program when finished.

2. Install NetRemote.

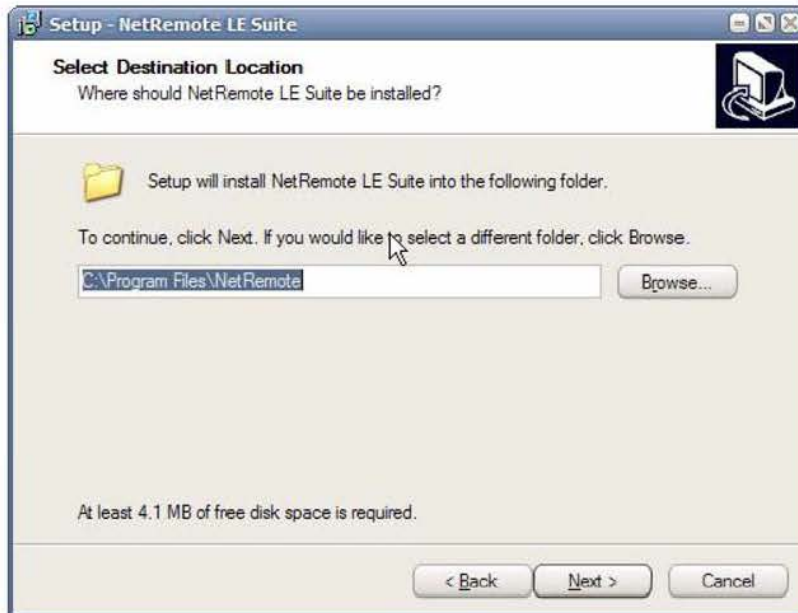
NetRemote is installed by running the file you just downloaded. Double click the file to start the installation process. The first screen is the NetRemote license agreement. Please read this carefully. Each license allows you to install NetRemote on 2 different personal computers (PC's) or pocket PC's (PPC).



Next, you will choose which version of NetRemote to install. If ActiveSync is not detected, only the option for installing the Windows version will be selectable.

3. NetRemote for Windows (98,Me,XP,2000,2003)

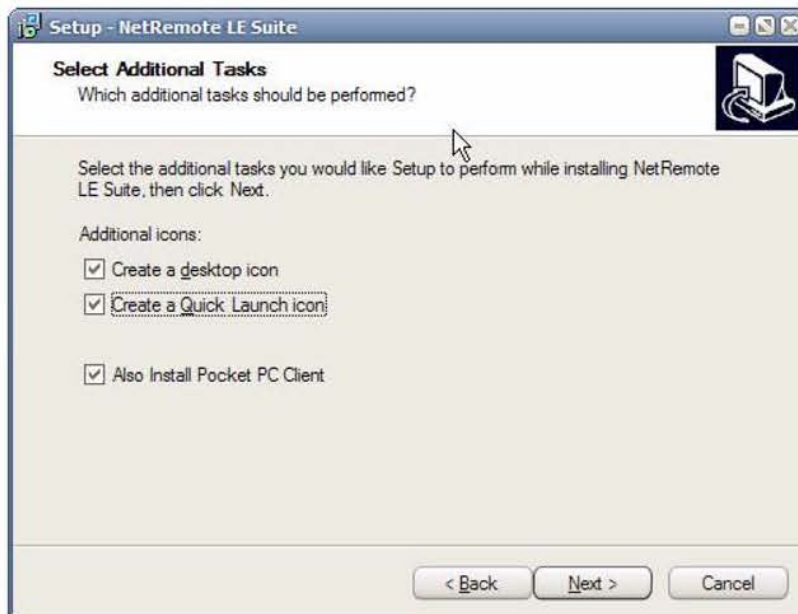
The destination folder is where the NetRemote program is installed on your hard drive. We suggest you use the default folder as shown below. Click **Next** to continue.



Next, select the Start Menu folder. Click **Next** to continue.

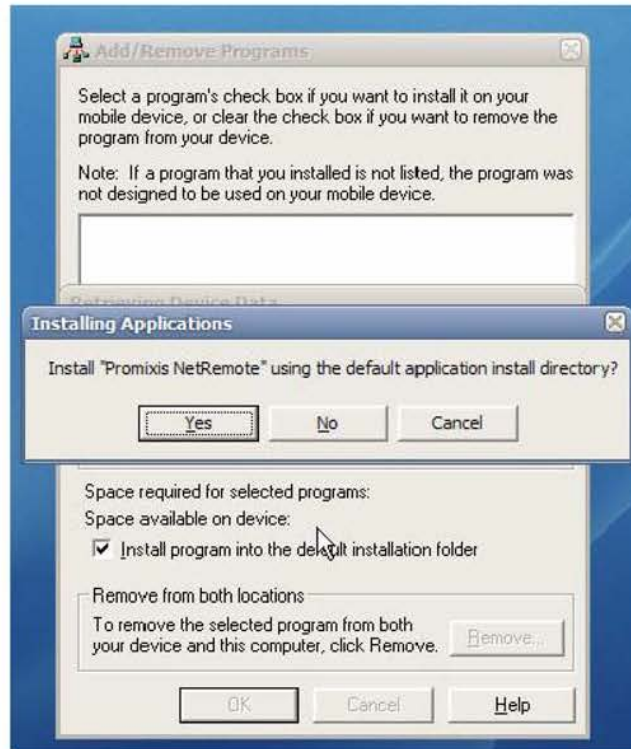


After NetRemote is installed, you can then select to have Short Cuts created on the Desktop and Quick Launch bars. Select the options you want. If you have an ActiveSync connection, the option to install the Pocket PC Client is available. Click **Next** to continue

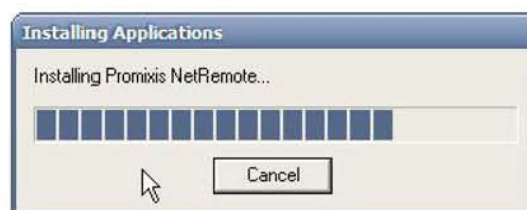


4. NetRemote for the PPC (2002, 2003)

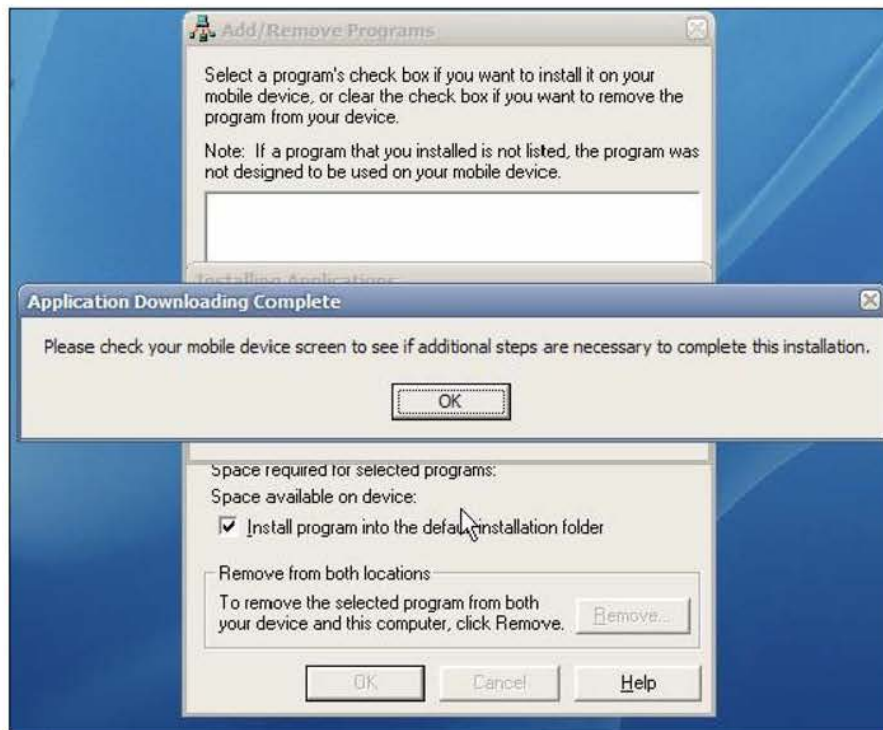
The option for installing the PPC version is only available on computers that have ActiveSync installed. After installing the PPC version, if your PPC is connected, ActiveSync displays the screen below.



Click **Yes** to install in the default directory (suggested). ActiveSync will then display a progress bar as the application is installed.

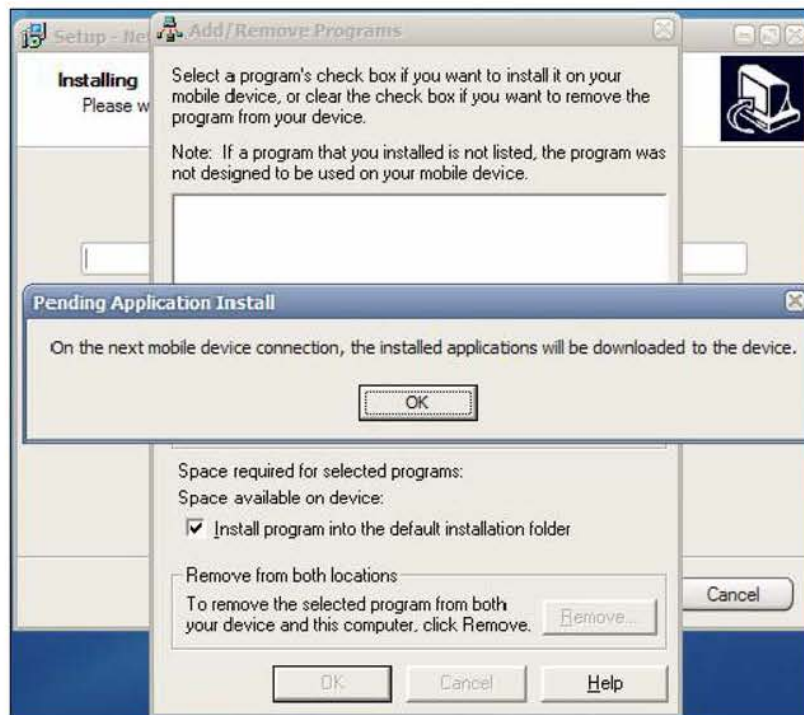


When the installation is completed, ActiveSync will display.



Click **OK** to continue.

If your PPC is not connected to your computer then ActiveSync will show the screen below.



Explore Litigation Insights

Docket Alarm provides insights to develop a more informed litigation strategy and the peace of mind of knowing you're on top of things.

Real-Time Litigation Alerts



Keep your litigation team up-to-date with **real-time alerts** and advanced team management tools built for the enterprise, all while greatly reducing PACER spend.

Our comprehensive service means we can handle Federal, State, and Administrative courts across the country.

Advanced Docket Research



With over 230 million records, Docket Alarm's cloud-native docket research platform finds what other services can't. Coverage includes Federal, State, plus PTAB, TTAB, ITC and NLRB decisions, all in one place.

Identify arguments that have been successful in the past with full text, pinpoint searching. Link to case law cited within any court document via Fastcase.

Analytics At Your Fingertips



Learn what happened the last time a particular judge, opposing counsel or company faced cases similar to yours.

Advanced out-of-the-box PTAB and TTAB analytics are always at your fingertips.

API

Docket Alarm offers a powerful API (application programming interface) to developers that want to integrate case filings into their apps.

LAW FIRMS

Build custom dashboards for your attorneys and clients with live data direct from the court.

Automate many repetitive legal tasks like conflict checks, document management, and marketing.

FINANCIAL INSTITUTIONS

Litigation and bankruptcy checks for companies and debtors.

E-DISCOVERY AND LEGAL VENDORS

Sync your system to PACER to automate legal marketing.