



(12) **United States Patent**  
**Hodgkinson et al.**

(10) **Patent No.:** **US 6,317,431 B1**  
(45) **Date of Patent:** **Nov. 13, 2001**

- (54) **ATM PARTIAL CUT-THROUGH**
- (75) **Inventors:** **Terence G Hodgkinson**, Suffolk; **Alan W O'Neill**, Ipswich, both of (GB)
- (73) **Assignee:** **British Telecommunications public limited company**, London (GB)
- (\*) **Notice:** Subject to any disclaimer, the term of this patent is extended or adjusted under 35 U.S.C. 154(b) by 0 days.
- (21) **Appl. No.:** **09/029,570**
- (22) **PCT Filed:** **Jun. 20, 1997**
- (86) **PCT No.:** **PCT/GB97/01681**  
§ 371 Date: **Mar. 6, 1998**  
§ 102(e) Date: **Mar. 6, 1998**
- (87) **PCT Pub. No.:** **WO97/50276**  
PCT Pub. Date: **Dec. 31, 1997**
- (30) **Foreign Application Priority Data**  
Jun. 21, 1996 (GB) ..... 9613020
- (51) **Int. Cl.<sup>7</sup>** ..... **H04L 12/28; H04L 12/56; H04J 3/22; H04J 3/24**
- (52) **U.S. Cl.** ..... **370/395; 370/392; 370/397; 370/466; 370/468**

(58) **Field of Search** ..... 370/395, 392, 370/225, 256, 408, 409, 399, 466, 468, 469, 471, 478, 355, 254, 397, 401, 351

(56) **References Cited**

**U.S. PATENT DOCUMENTS**

5,432,777	*	7/1995	Le Boudec et al. ....	370/60
5,440,547	*	8/1995	Easki et al. ....	370/60
5,548,589	*	8/1996	Jeon et al. ....	370/60.1
5,764,645	*	6/1998	Bernet et al. ....	370/466
5,835,710	*	11/1998	Nagami et al. ....	395/200.8
5,872,773	*	2/1999	Katzela et al. ....	370/256
5,903,559	*	5/1999	Acharya et al. ....	370/55

\* cited by examiner

*Primary Examiner*—Wellington Chin

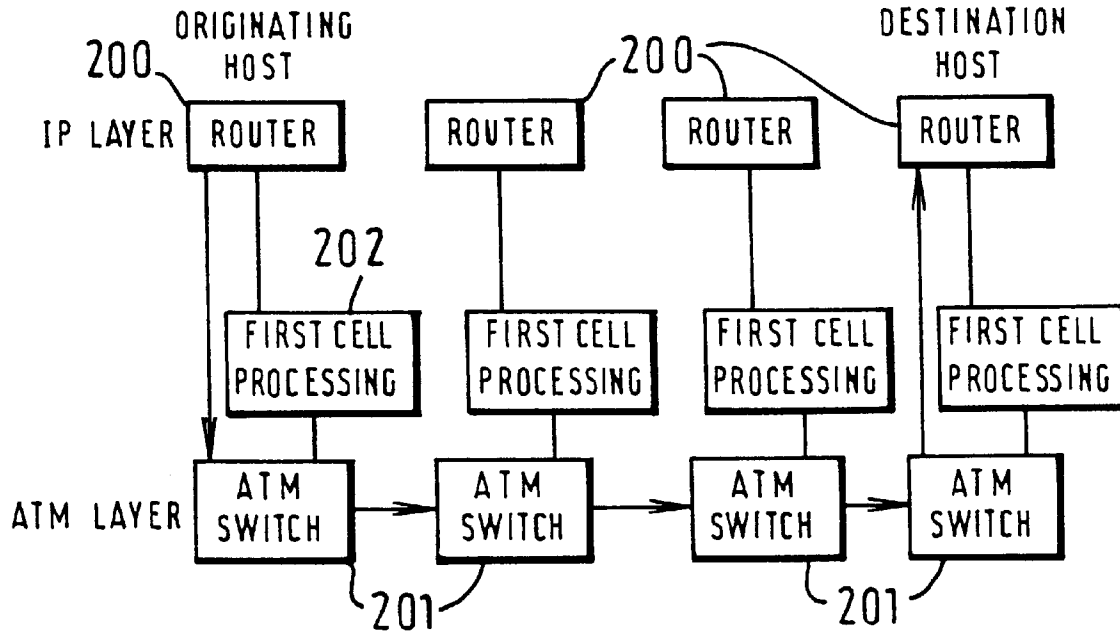
*Assistant Examiner*—M. Phan

(74) *Attorney, Agent, or Firm*—Nixon & Vanderhye, P.C.

(57) **ABSTRACT**

A method of transmitting across an ATM network a connectionless datagram in a cell structure having the form of a plurality of ATM cells the first cell of which carries in its payload the routing information of the connectionless datagram, and wherein at an intermediate node of the network a connectionless routing function is carried out on said first cell with the remaining cells remaining in the ATM layer.

**10 Claims, 5 Drawing Sheets**



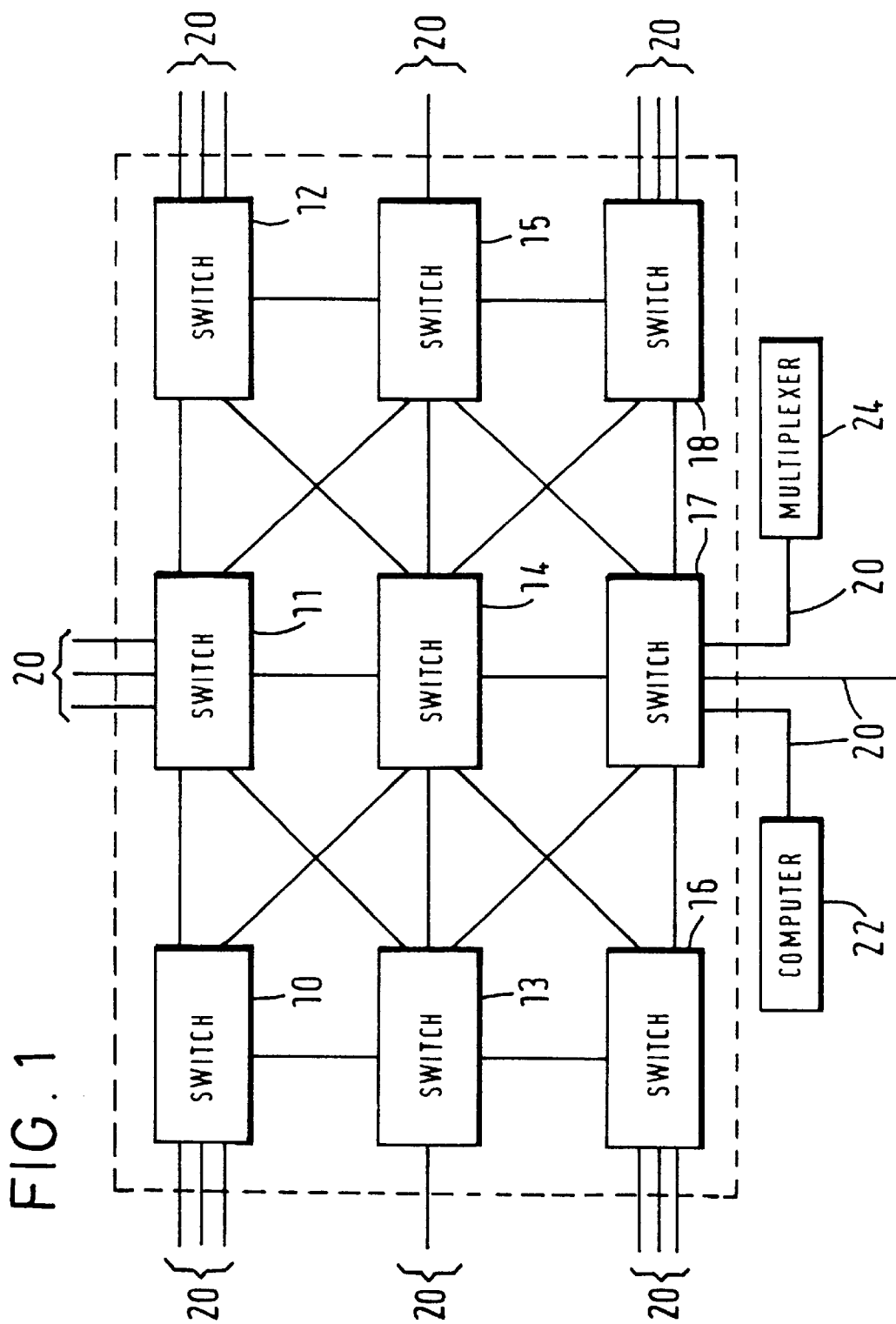


FIG. 2

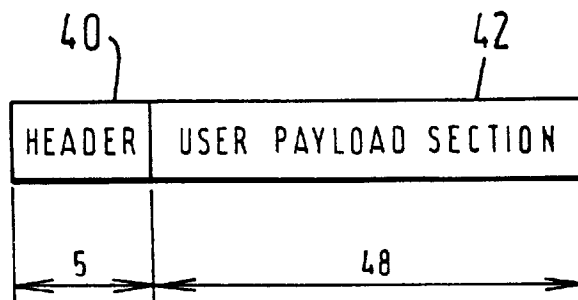


FIG. 3

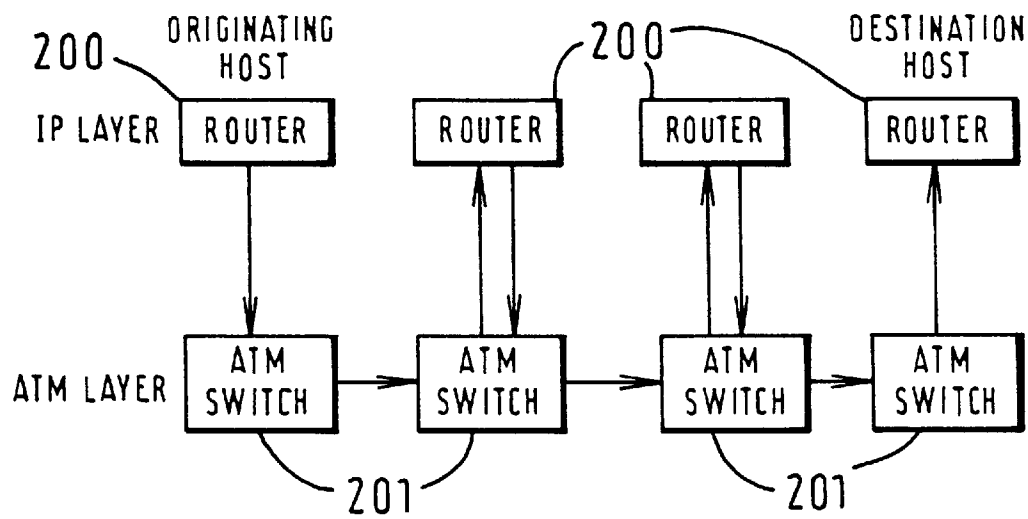


FIG. 4

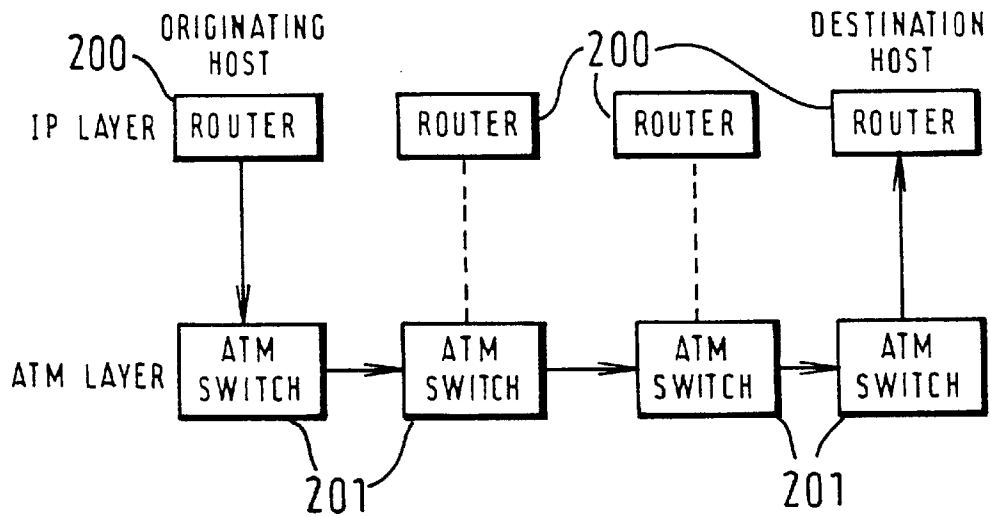
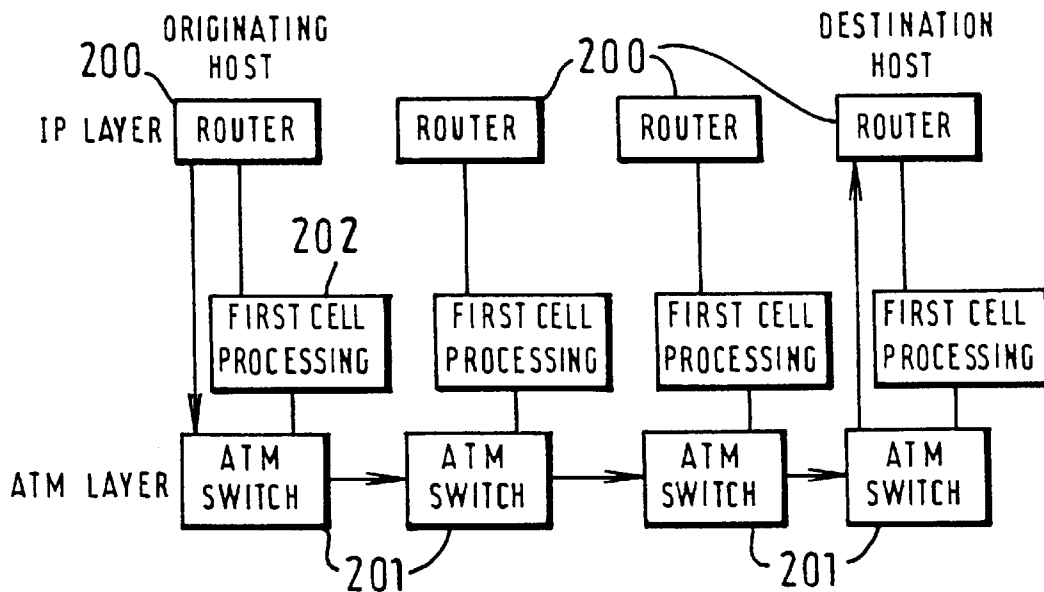


FIG. 5



# FIG. 6

V	HL	ST	TL	
Id			FB	FO
TtL	Pr		HC	
SIPA				
OIPA				
0				P
IPOP				

# FIG. 7

V	P	FL		
PL		Py	HL	
SIPA				
SIPA				
SIPA				
SIPA				
OIPA				
OIPA				
OIPA				
OIPA				
IPOP				

# Explore Litigation Insights

Docket Alarm provides insights to develop a more informed litigation strategy and the peace of mind of knowing you're on top of things.

## Real-Time Litigation Alerts



Keep your litigation team up-to-date with **real-time alerts** and advanced team management tools built for the enterprise, all while greatly reducing PACER spend.

Our comprehensive service means we can handle Federal, State, and Administrative courts across the country.

## Advanced Docket Research



With over 230 million records, Docket Alarm's cloud-native docket research platform finds what other services can't. Coverage includes Federal, State, plus PTAB, TTAB, ITC and NLRB decisions, all in one place.

Identify arguments that have been successful in the past with full text, pinpoint searching. Link to case law cited within any court document via Fastcase.

## Analytics At Your Fingertips



Learn what happened the last time a particular judge, opposing counsel or company faced cases similar to yours.

Advanced out-of-the-box PTAB and TTAB analytics are always at your fingertips.

## API

Docket Alarm offers a powerful API (application programming interface) to developers that want to integrate case filings into their apps.

## LAW FIRMS

Build custom dashboards for your attorneys and clients with live data direct from the court.

Automate many repetitive legal tasks like conflict checks, document management, and marketing.

## FINANCIAL INSTITUTIONS

Litigation and bankruptcy checks for companies and debtors.

## E-DISCOVERY AND LEGAL VENDORS

Sync your system to PACER to automate legal marketing.