

(12) **United States Patent**  
**Monachello et al.**

(10) **Patent No.:** **US 6,748,439 B1**  
(45) **Date of Patent:** **Jun. 8, 2004**

(54) **SYSTEM AND METHOD FOR SELECTING INTERNET SERVICE PROVIDERS FROM A WORKSTATION THAT IS CONNECTED TO A LOCAL AREA NETWORK**

(75) Inventors: **David R. Monachello**, Westlake Village, CA (US); **Mark de Lange**, West Hills, CA (US); **Sean Finlay**, West Hills, CA (US)

(73) Assignee: **Accelerated Networks**, Moorpark, CA (US)

(\* ) Notice: Subject to any disclaimer, the term of this patent is extended or adjusted under 35 U.S.C. 154(b) by 0 days.

(21) Appl. No.: **09/370,105**

(22) Filed: **Aug. 6, 1999**

(51) **Int. Cl.**<sup>7</sup> ..... **G06F 15/16**

(52) **U.S. Cl.** ..... **709/229; 709/227; 370/352; 370/232; 340/825**

(58) **Field of Search** ..... **709/227-229, 709/203; 707/10; 705/32, 412; 725/1, 30, 99; 713/201, 156, 155; 370/232-234, 352; 455/432, 433; 340/810, 825; 379/230, 112.01, 201.03**

(56) **References Cited**

**U.S. PATENT DOCUMENTS**

5,682,325 A \* 10/1997 Lightfoot et al. .... 340/825

6,023,698 A \* 2/2000 Lavey et al. .... 707/10  
6,108,330 A \* 8/2000 Bhatia et al. .... 370/352  
6,115,755 A \* 9/2000 Krishan ..... 370/351  
6,151,629 A \* 11/2000 Trewitt ..... 709/225  
6,243,379 B1 \* 6/2001 Veerina et al. .... 370/389  
6,243,451 B1 \* 6/2001 Shah et al. .... 370/352  
6,351,453 B1 \* 2/2002 Nolting et al. .... 370/232  
6,385,651 B2 \* 5/2002 Dancs et al. .... 709/227  
2002/0002615 A1 \* 1/2002 Bhagavath et al. .... 709/227

\* cited by examiner

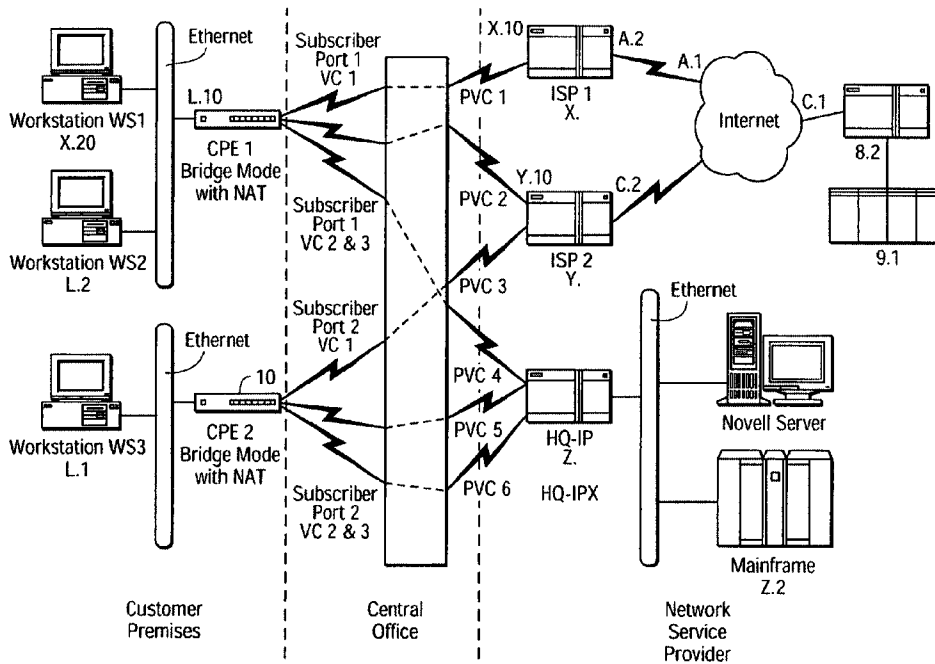
*Primary Examiner*—Wen-Tai Lin

(74) *Attorney, Agent, or Firm*—Blakely, Sokoloff, Taylor & Zafman LLP

(57) **ABSTRACT**

A method for dynamically selecting a network service provider is disclosed. The method allows a user to select a default route for an internet connection in a network configuration having a local area network workstations coupled to the network, customer premises equipment and a central office. Multiple network service providers may be selected for an individual workstation. The method may include simultaneously connecting the workstation to the network service providers.

**20 Claims, 6 Drawing Sheets**



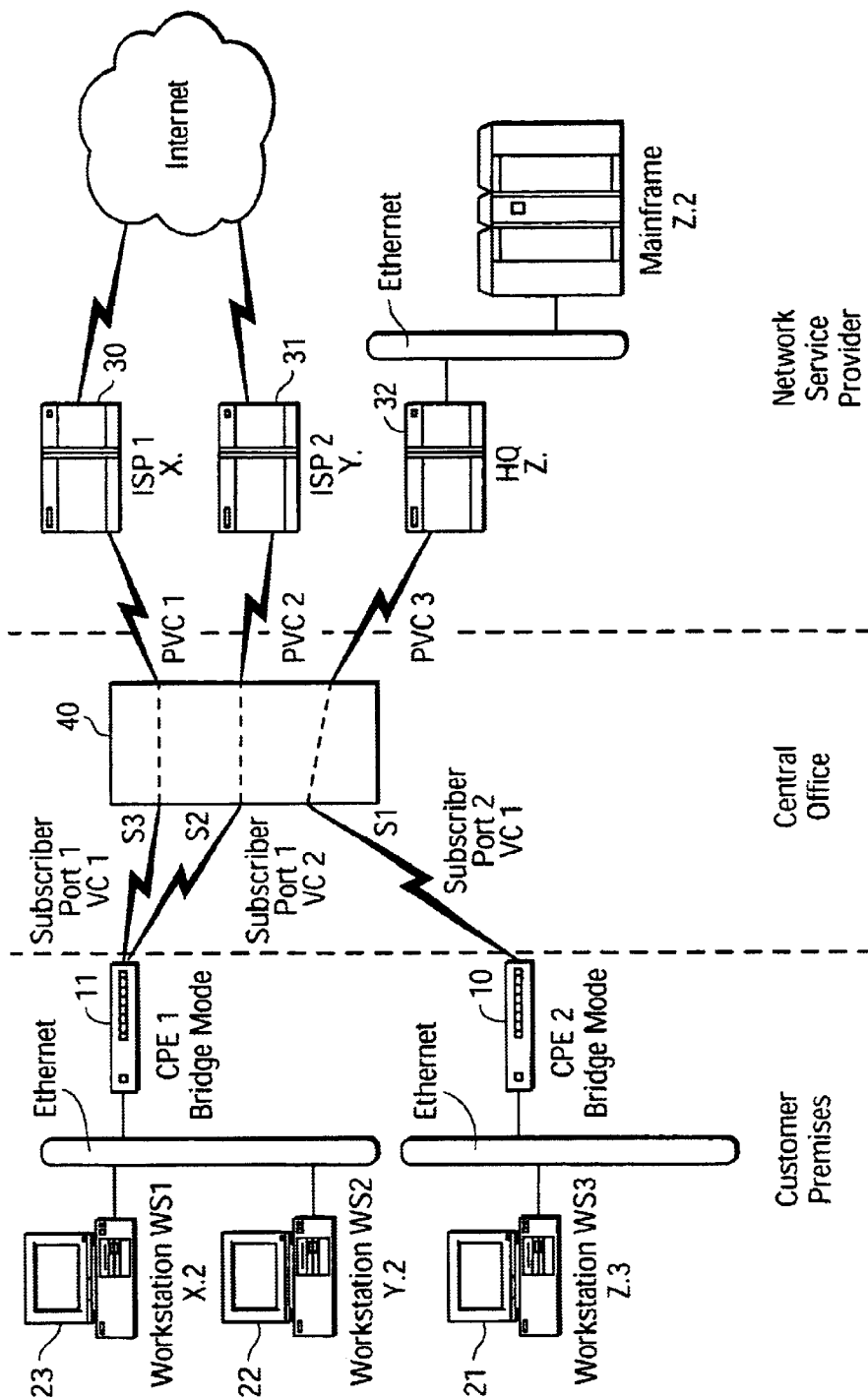


FIG. 1

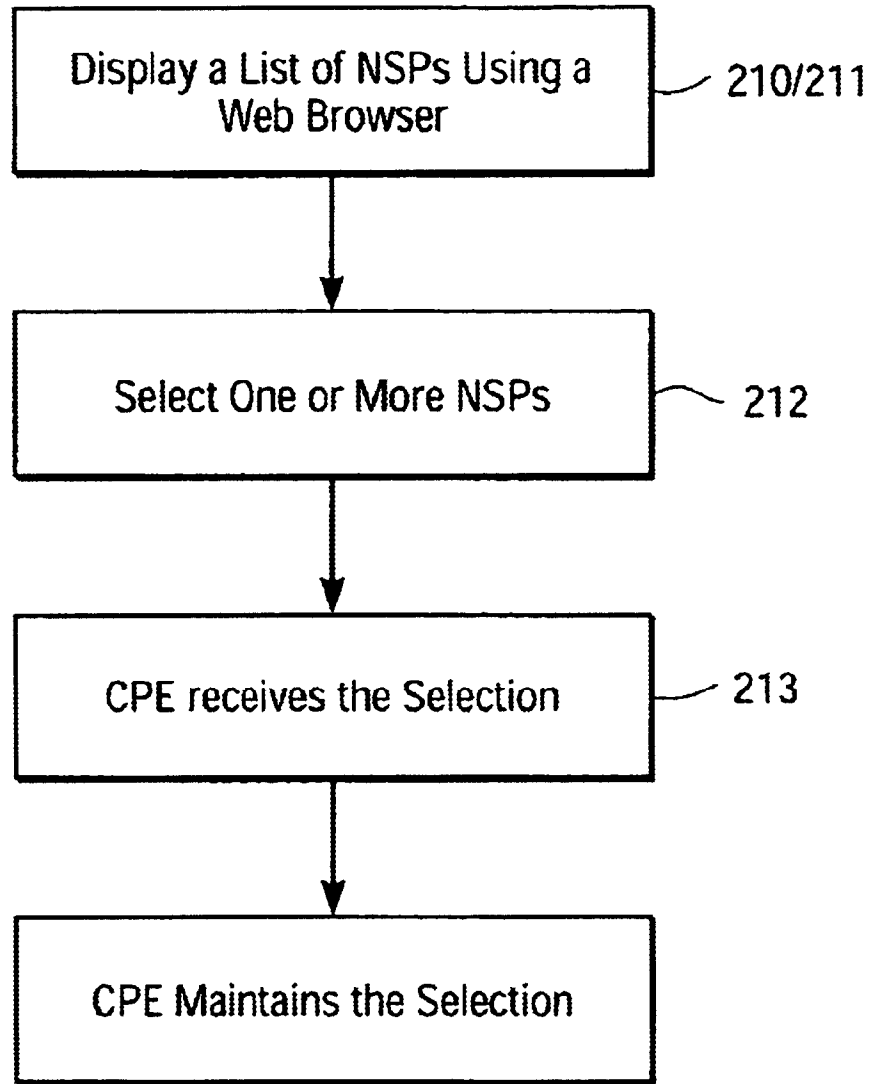


FIG. 2

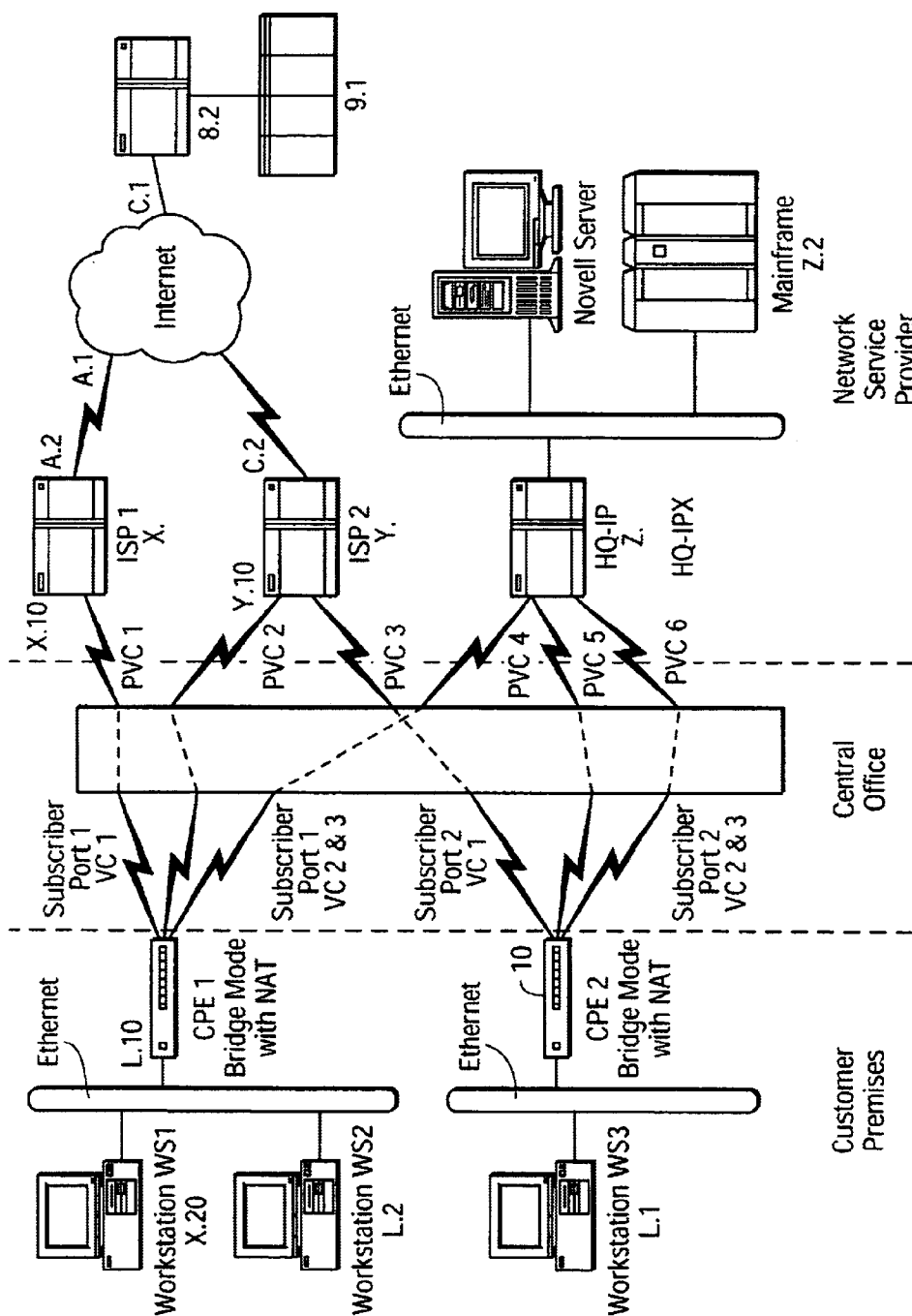


FIG. 3

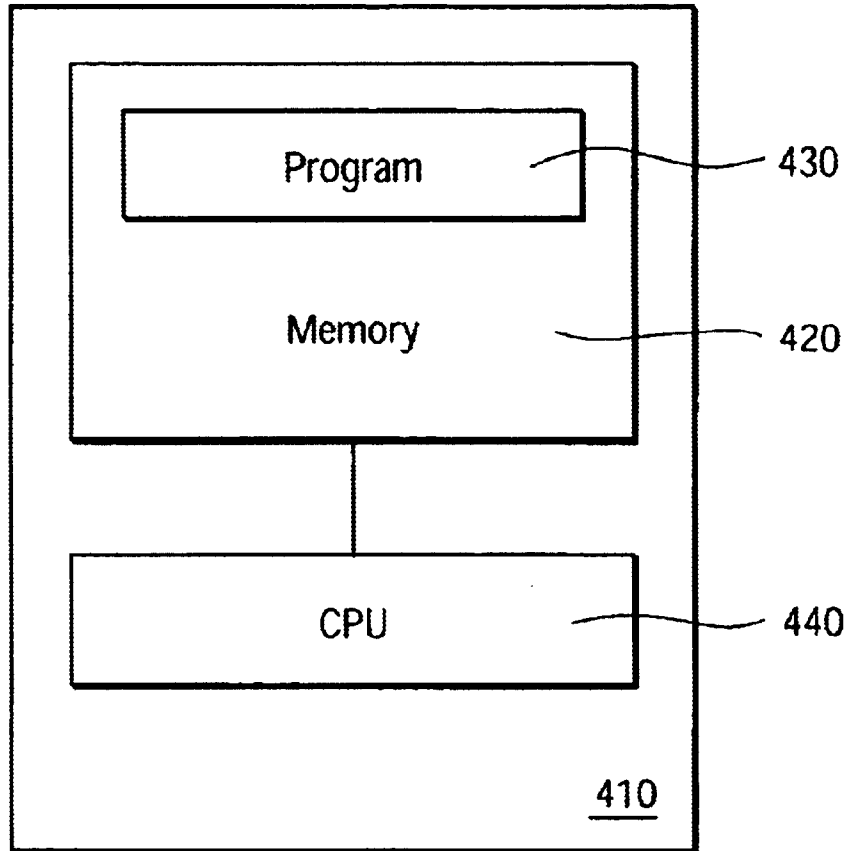


FIG. 4

# Explore Litigation Insights

Docket Alarm provides insights to develop a more informed litigation strategy and the peace of mind of knowing you're on top of things.

## Real-Time Litigation Alerts



Keep your litigation team up-to-date with **real-time alerts** and advanced team management tools built for the enterprise, all while greatly reducing PACER spend.

Our comprehensive service means we can handle Federal, State, and Administrative courts across the country.

## Advanced Docket Research



With over 230 million records, Docket Alarm's cloud-native docket research platform finds what other services can't. Coverage includes Federal, State, plus PTAB, TTAB, ITC and NLRB decisions, all in one place.

Identify arguments that have been successful in the past with full text, pinpoint searching. Link to case law cited within any court document via Fastcase.

## Analytics At Your Fingertips



Learn what happened the last time a particular judge, opposing counsel or company faced cases similar to yours.

Advanced out-of-the-box PTAB and TTAB analytics are always at your fingertips.

## API

Docket Alarm offers a powerful API (application programming interface) to developers that want to integrate case filings into their apps.

## LAW FIRMS

Build custom dashboards for your attorneys and clients with live data direct from the court.

Automate many repetitive legal tasks like conflict checks, document management, and marketing.

## FINANCIAL INSTITUTIONS

Litigation and bankruptcy checks for companies and debtors.

## E-DISCOVERY AND LEGAL VENDORS

Sync your system to PACER to automate legal marketing.