

PENGAD 800-681-6688
EXHIBIT
13 Kappelman
1
11-15-16 bn

Oxbo International Corporation, Patent Owner
Exhibit 2013
H&S Manufacturing Company, Inc. v. Oxbo International
Corporation
IPR2016-00950



H&S 153874

HIGHLY CONFID AL -- OUTSIDE COUNSEL ONLY -- PROSECUTION BAR



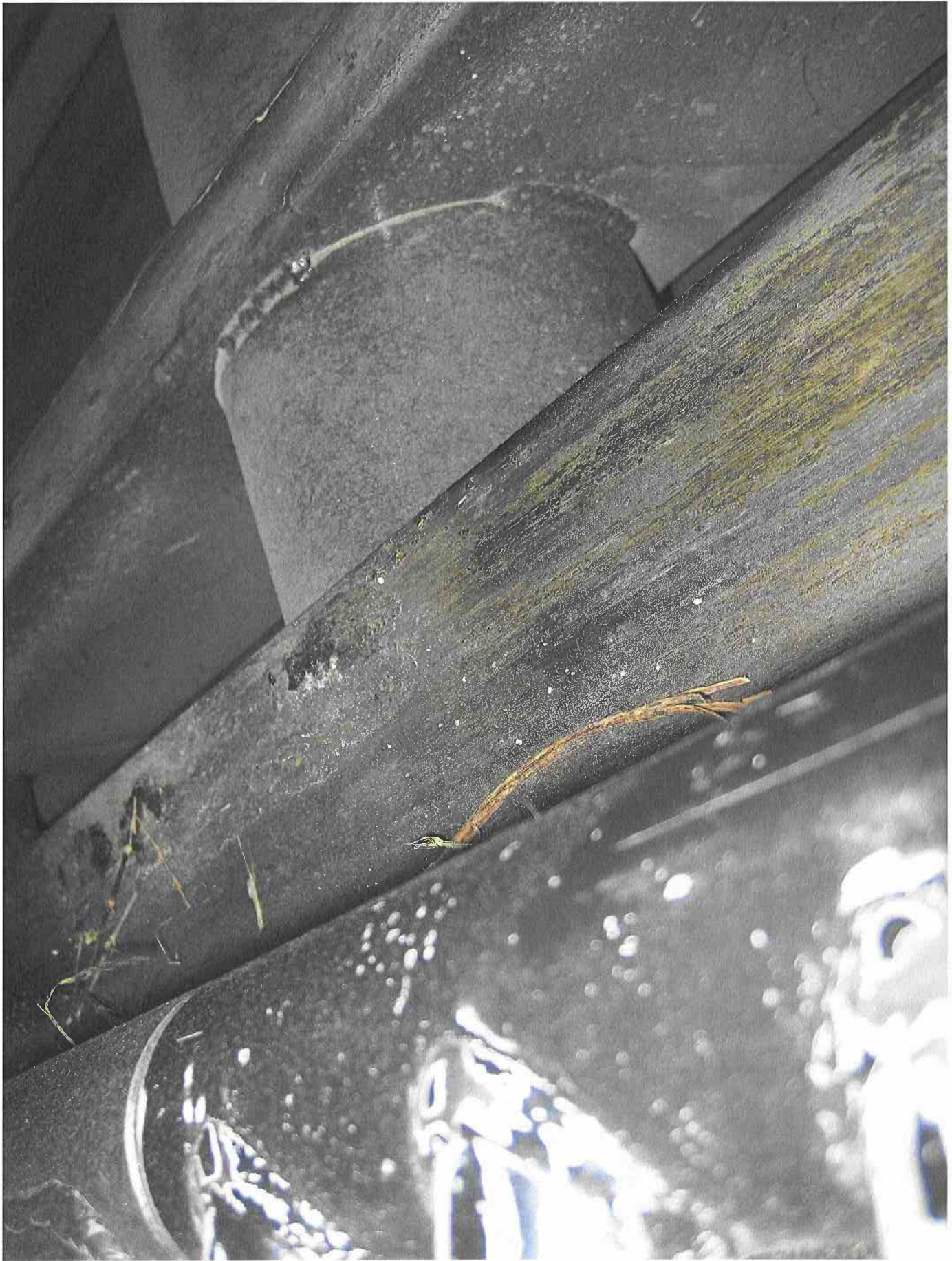
H&S 153875

HIGHLY CONFIDENTIAL - OUTSIDE COUNSEL ONLY - PROSECUTION BAR



H&S 153876

HIGHLY CONFID AL - OUTSIDE COUNSEL ONLY - PROSECUTION BAR



H&S 153877

HIGHLY CONFIDENTIAL - OUTSIDE COUNSEL ONLY - PROSECUTION BAR





H&S 153879

HIGHLY CONFIDENTIAL – OUTSIDE COUNSEL ONLY – PROSECUTION BAR



H&S 153880

HIGHLY CONFID AL - OUTSIDE COUNSEL ONLY - PROSECUTION BAR



H&S 153881

HIGHLY CONFIDENTIAL - OUTSIDE COUNSEL ONLY - PROSECUTION BAR

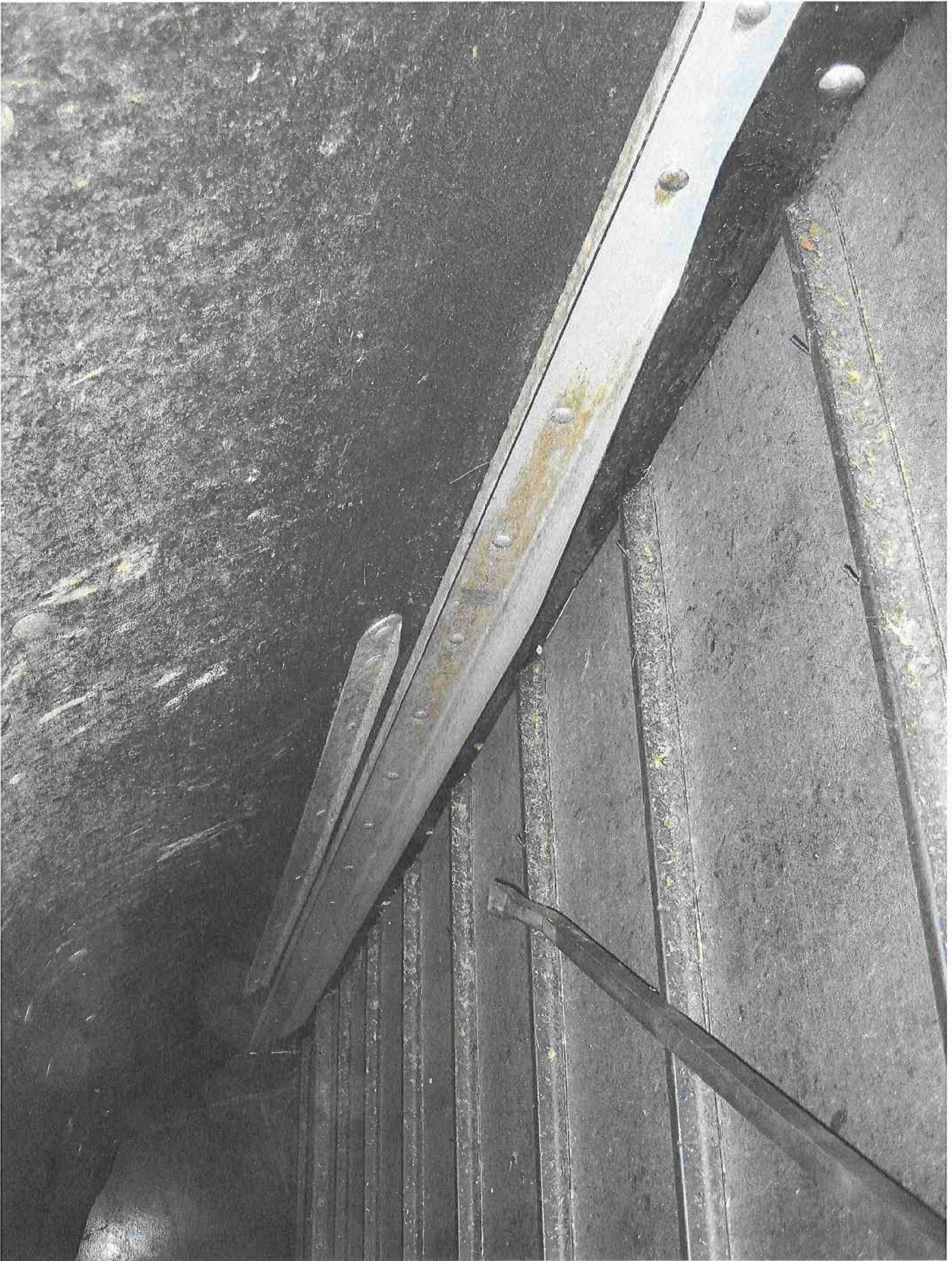






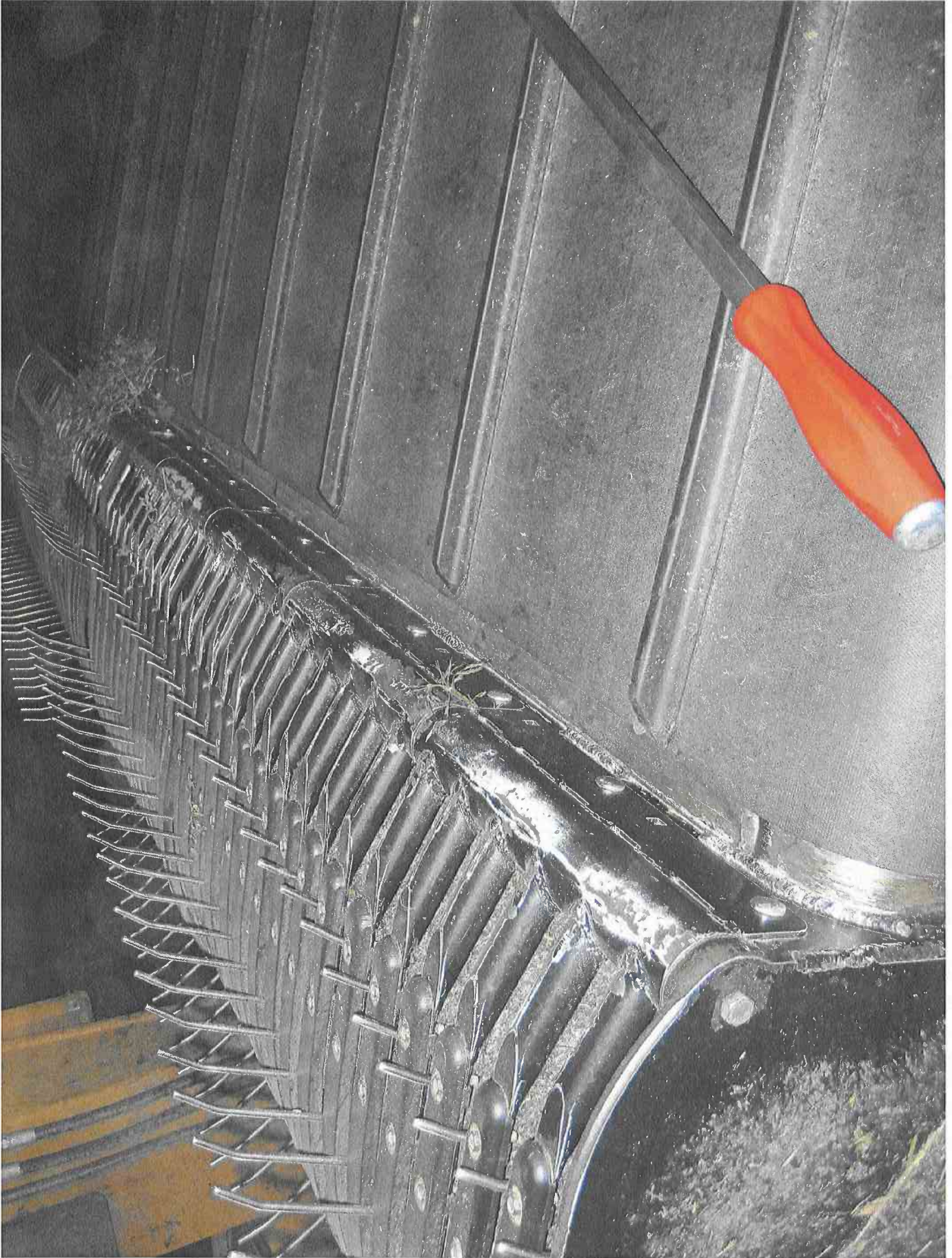
H&S 153884

HIGHLY CONFID AL - OUTSIDE COUNSEL ONLY - PROSECUTION BAR



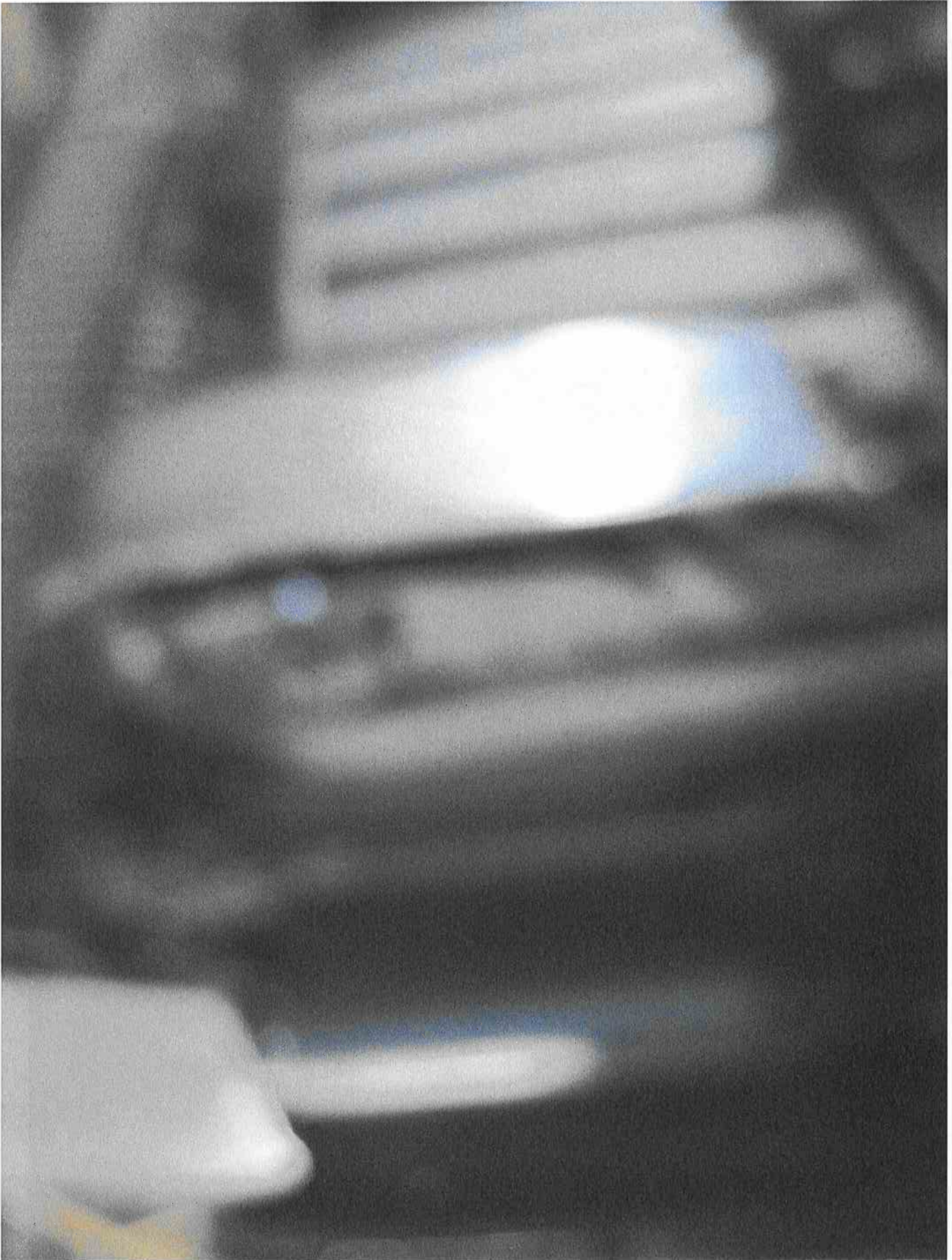
H&S 153885

HIGHLY CONFIDENTIAL - OUTSIDE COUNSEL ONLY - PROSECUTION BAR



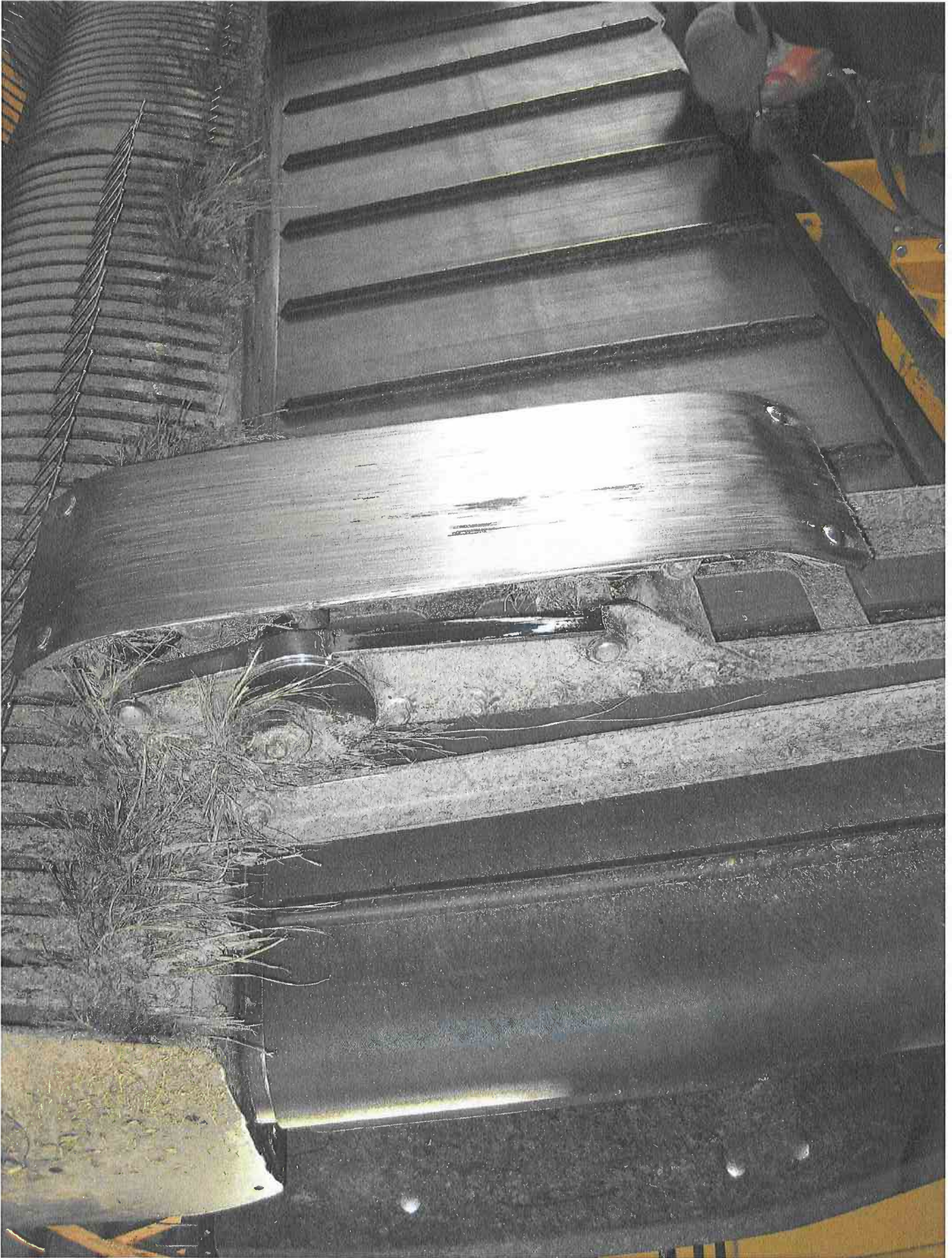
H&S 153886

HIGHLY CONFIDENTIAL -- OUTSIDE COUNSEL ONLY -- PROSECUTION BAR



H&S 153887

HIGHLY CONFIDENTIAL – OUTSIDE COUNSEL ONLY – PROSECUTION BAR



H&S 153888

HIGHLY CONFIDENTIAL - OUTSIDE COUNSEL ONLY - PROSECUTION BAR



H&S 153889

HIGHLY CONFIDENTIAL - OUTSIDE COUNSEL ONLY - PROSECUTION BAR



H&S 153890

HIGHLY CONFID AL - OUTSIDE COUNSEL ONLY - PROSECUTION BAR



H&S 153891

HIGHLY CONFIDENTIAL - OUTSIDE COUNSEL ONLY - PROSECUTION BAR



H&S 153892

HIGHLY CONFIDENTIAL - OUTSIDE COUNSEL ONLY - PROSECUTION BAR



H&S 153893

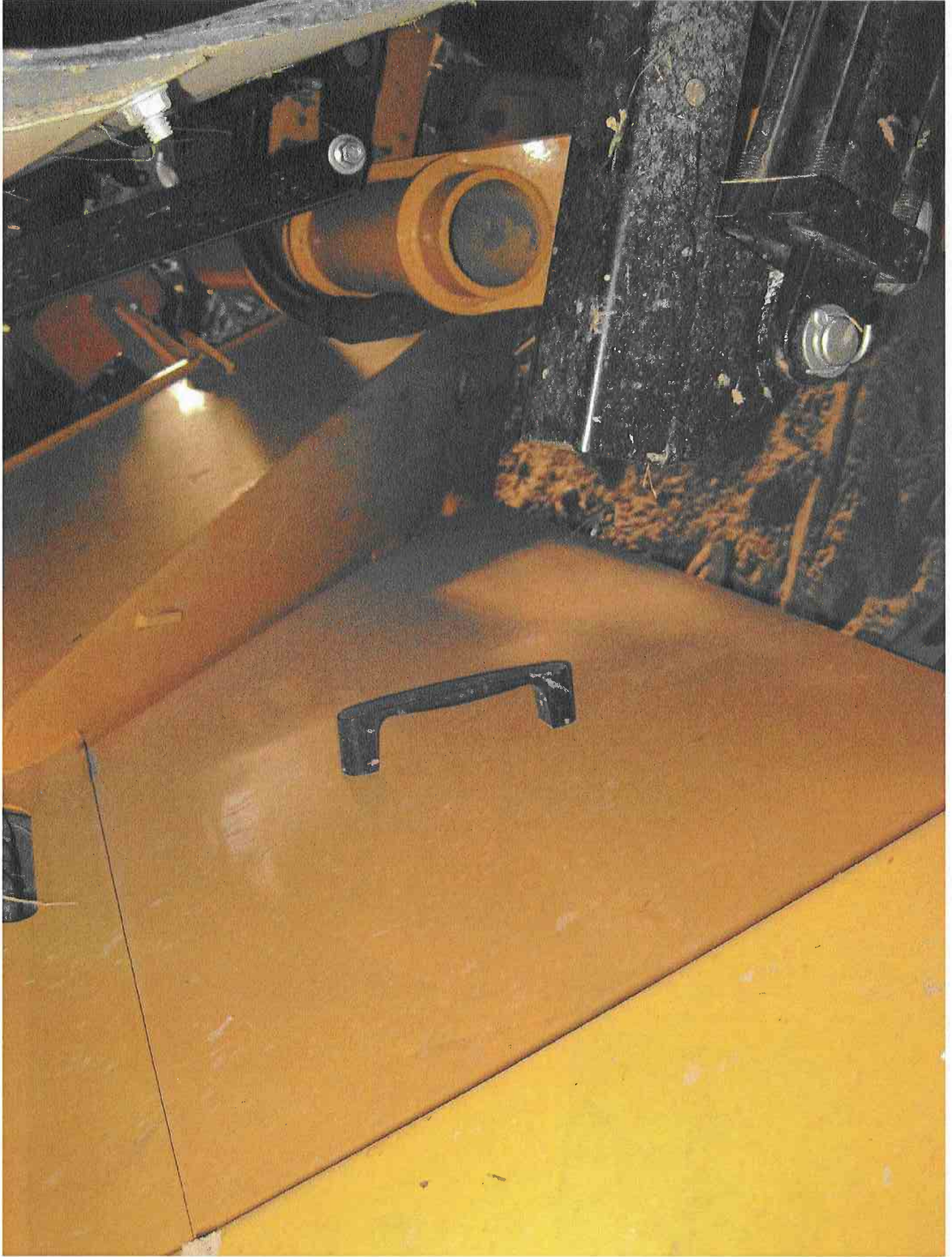
HIGHLY CONFIDENTIAL - OUTSIDE COUNSEL ONLY - PROSECUTION BAR



H&S 153894

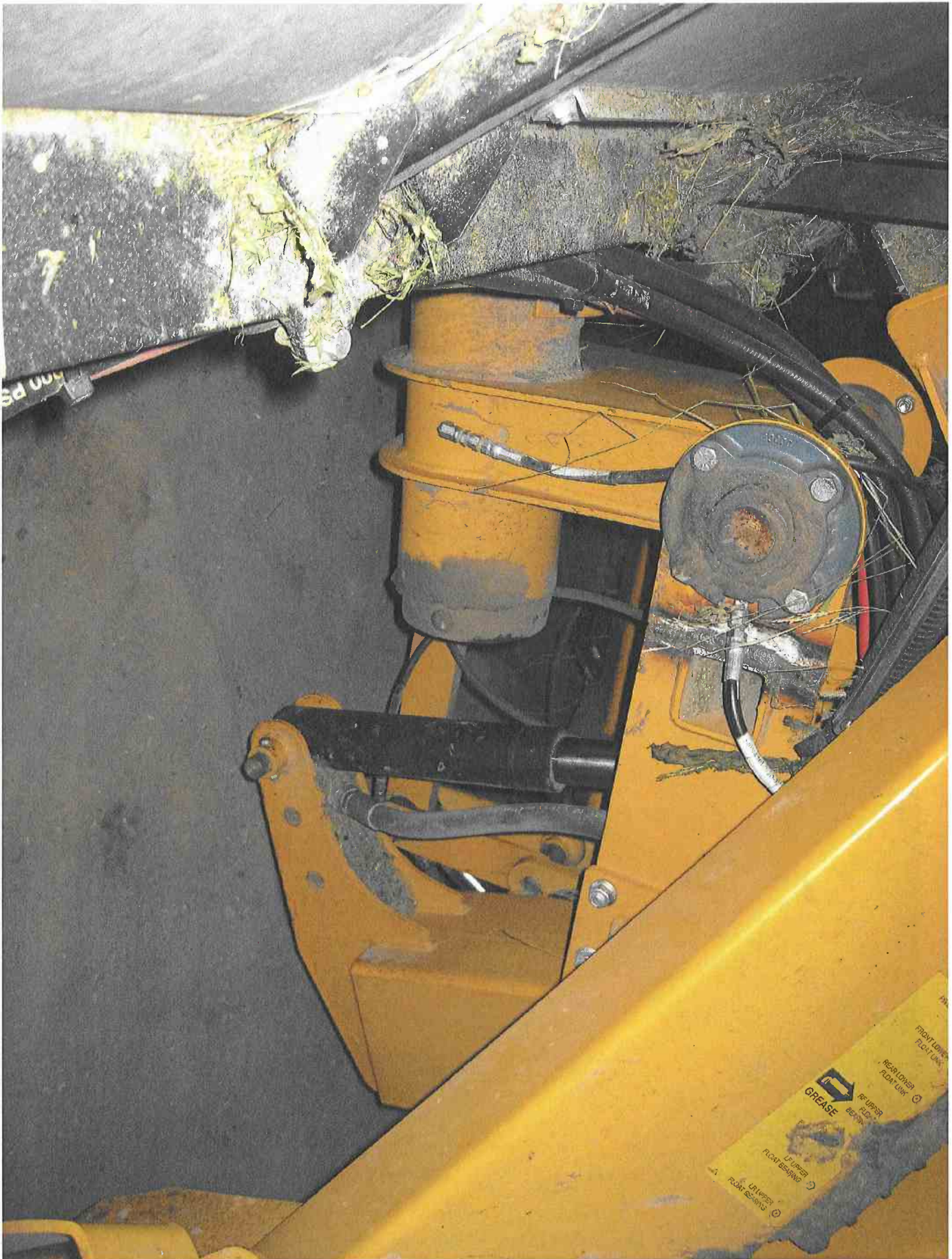
HIGHLY CONFIL AL - OUTSIDE COUNSEL ONLY - PROSECUTION BAR





H&S 153896

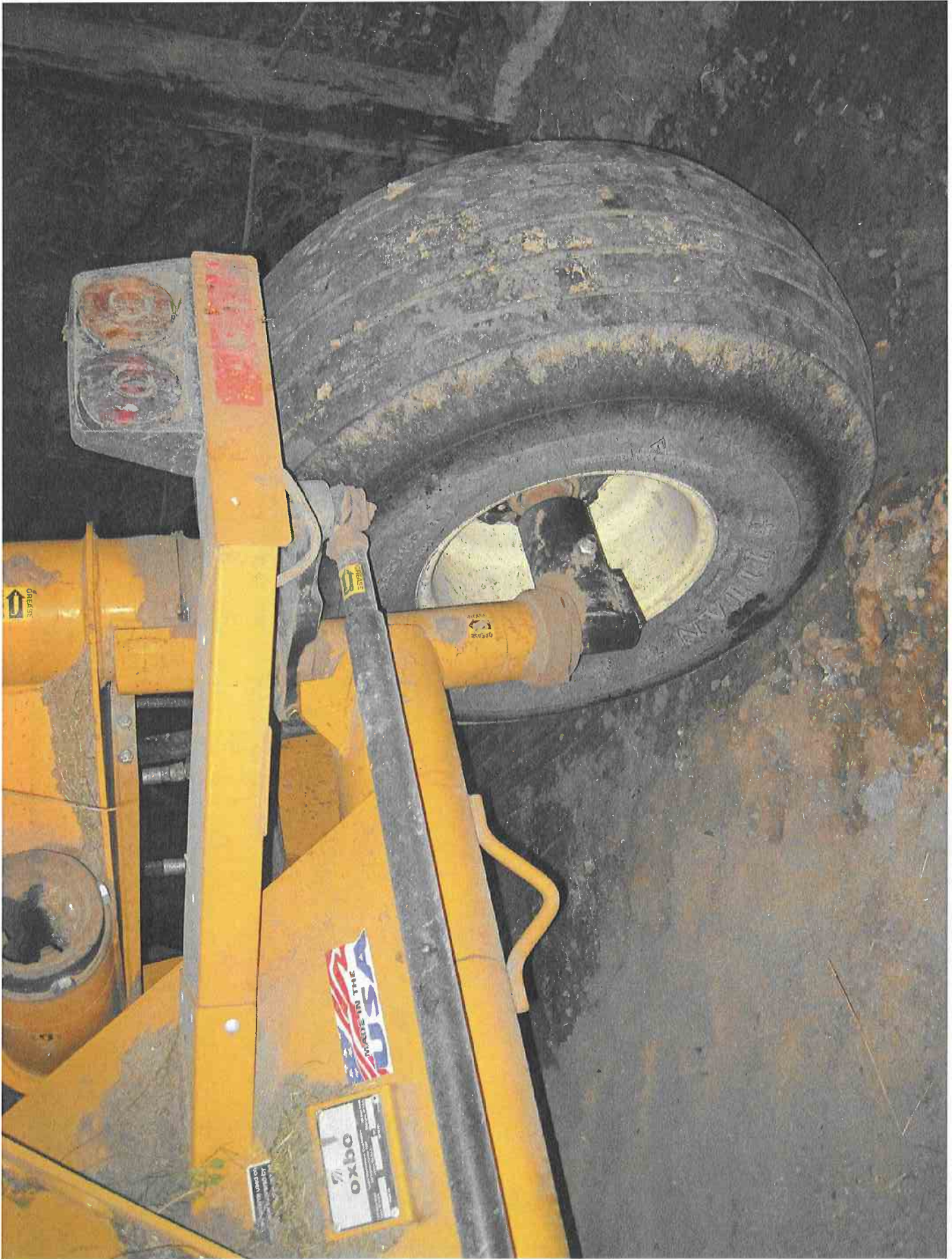
HIGHLY CONFIDENTIAL - OUTSIDE COUNSEL ONLY - PROSECUTION BAR





H&S 153898

HIGHLY CONFIDENTIAL - OUTSIDE COUNSEL ONLY - PROSECUTION BAR



H&S 153899

HIGHLY CONFIDENTIAL - OUTSIDE COUNSEL ONLY - PROSECUTION BAR





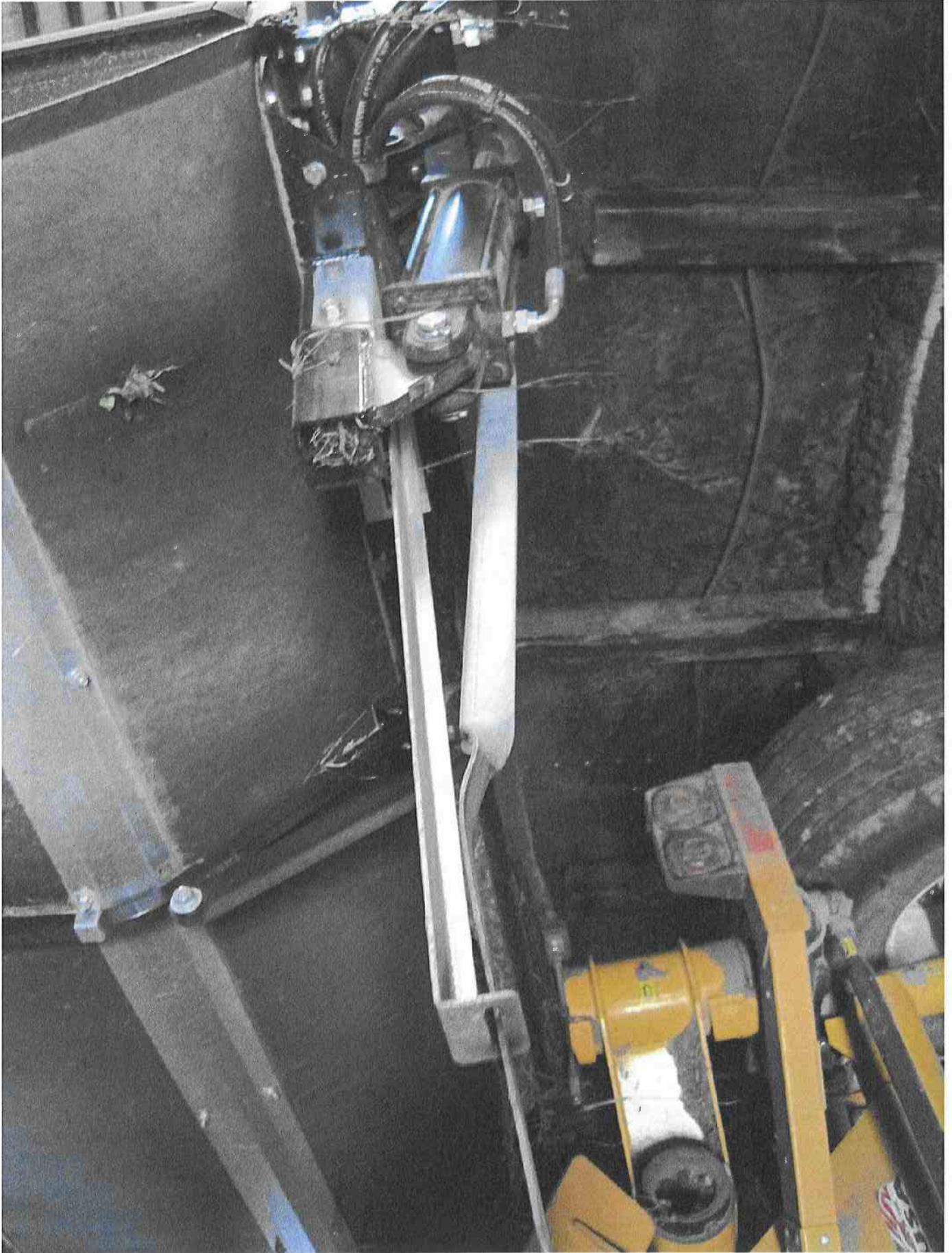
H&S 153901

HIGHLY CONFIDENTIAL - OUTSIDE COUNSEL ONLY - PROSECUTION BAR



H&S 153902

HIGHLY CONFIDENTIAL - OUTSIDE COUNSEL ONLY - PROSECUTION BAR



H&S 153903

HIGHLY CONFIDENTIAL - OUTSIDE COUNSEL ONLY - PROSECUTION BAR





H&S 153905

HIGHLY CONFIDENTIAL - OUTSIDE COUNSEL ONLY - PROSECUTION BAR



100 Bean Street
Clear Lake, WI U.S.A.

200031

91093-B

OXBO International Corporation
279 Birch Bay Lynden Road
Lynden, WA U.S.A.

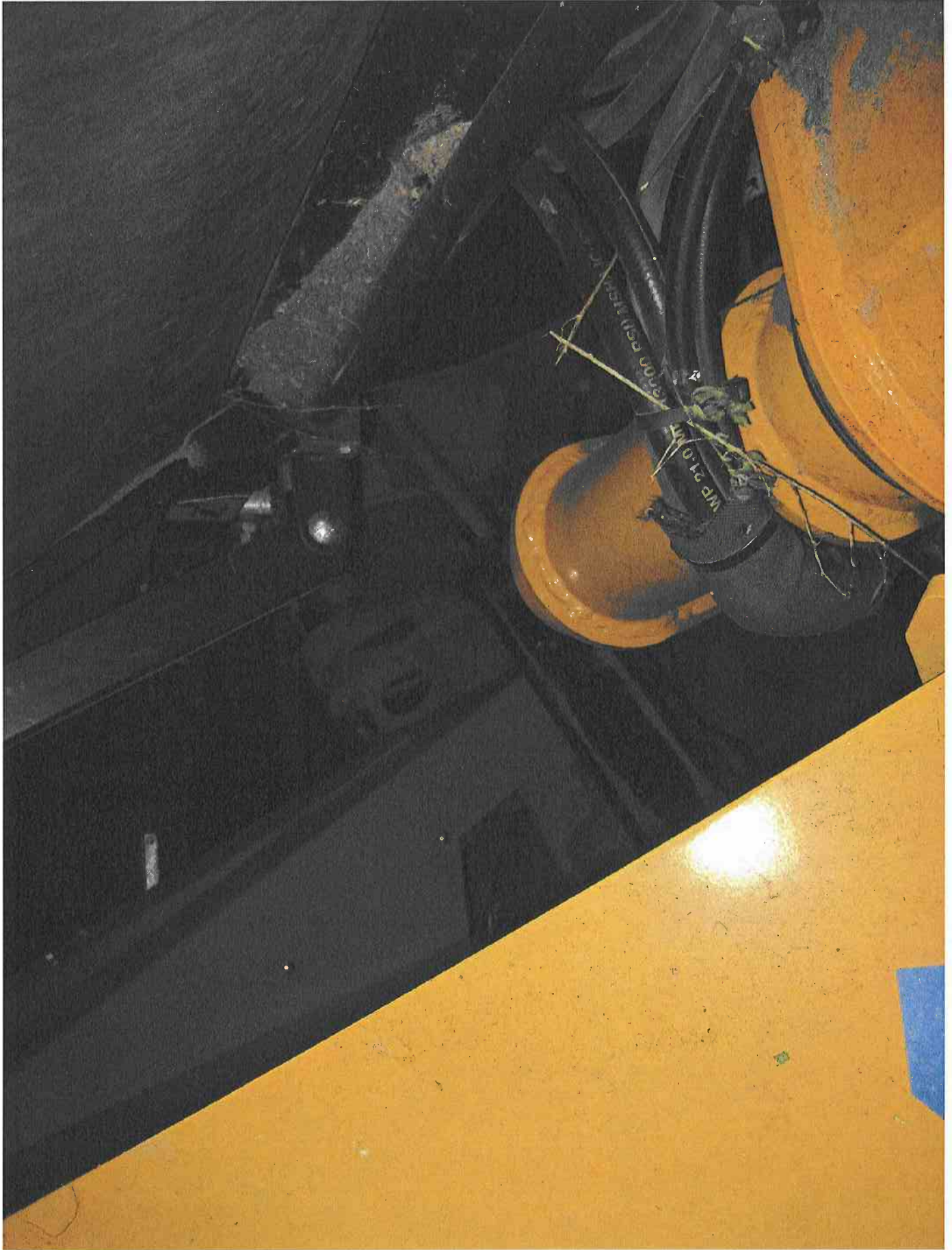
627840

Serial No.

7275 Byron Road
Byron, NY U.S.A.

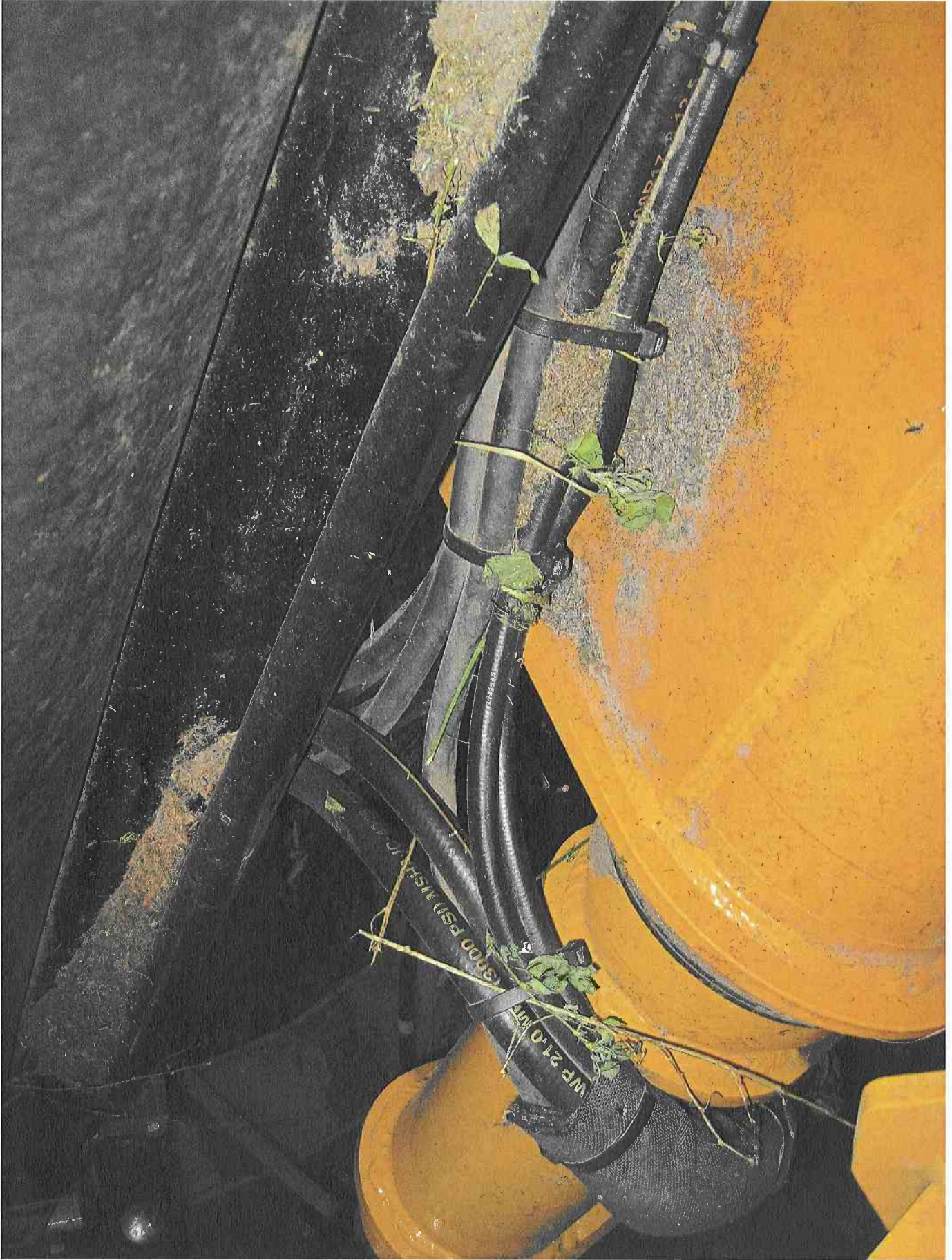
334

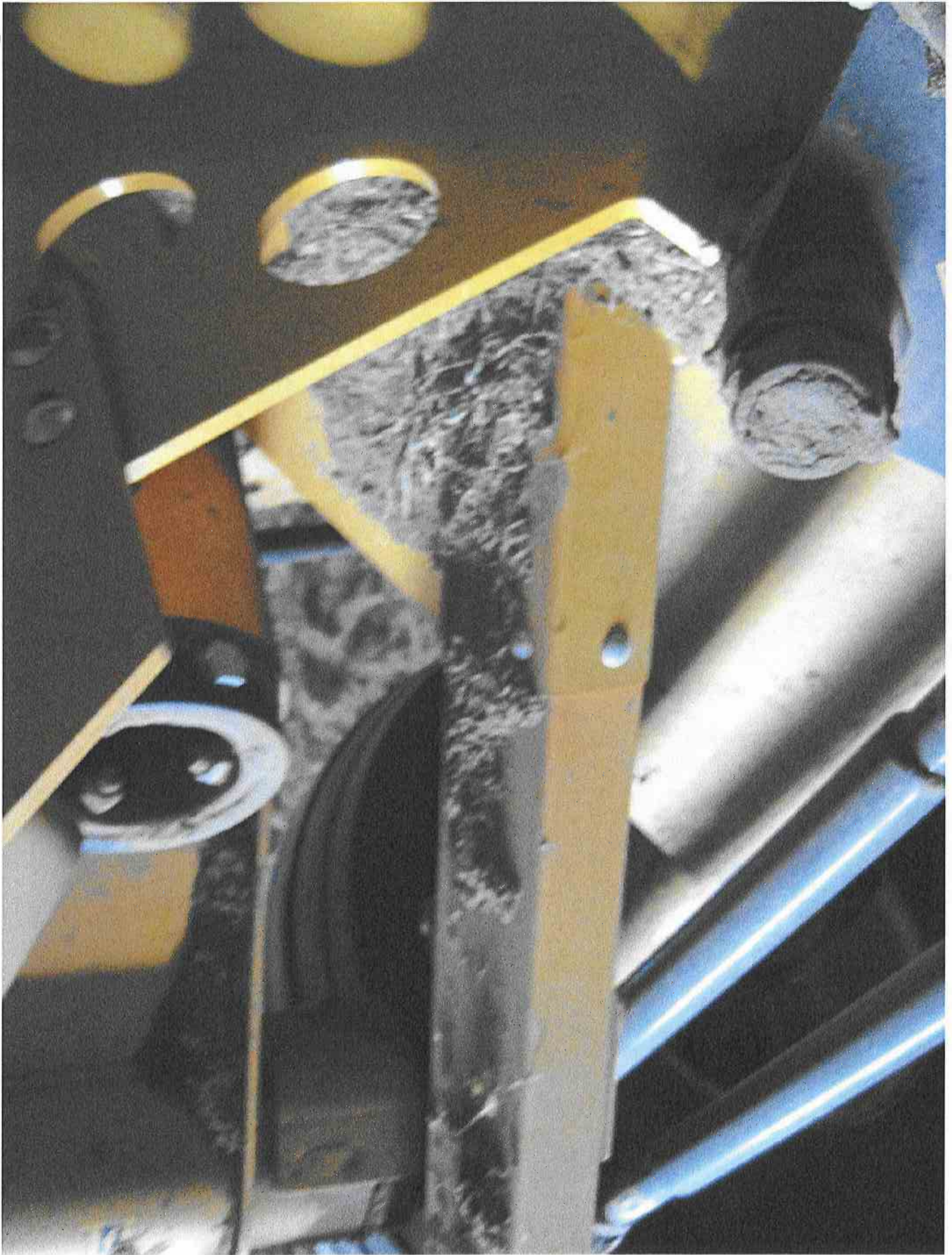
Model No.



H&S 153907

HIGHLY CONFIDENTIAL - OUTSIDE COUNSEL ONLY - PROSECUTION BAR







H&S 153910

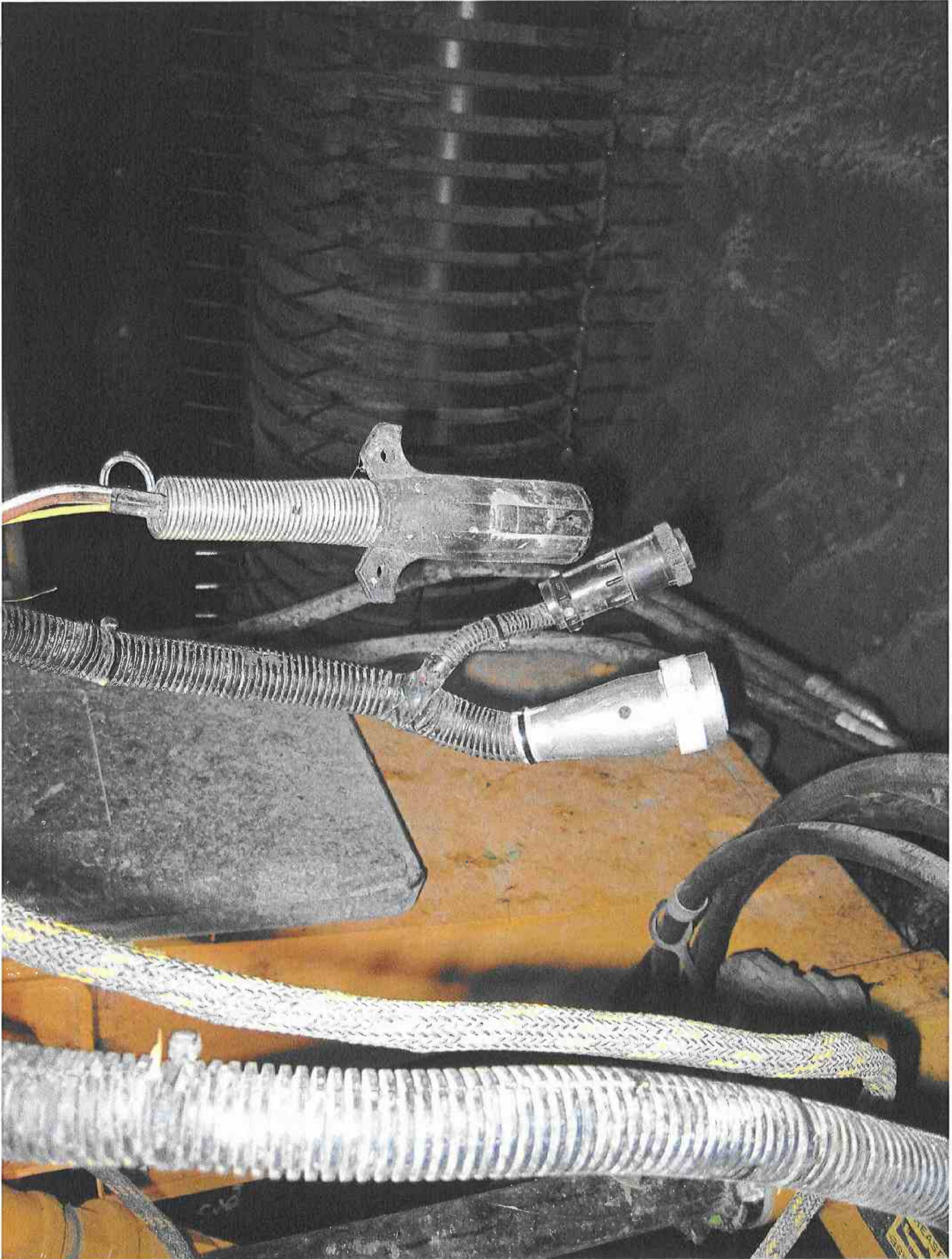
HIGHLY CONFIDENTIAL L - OUTSIDE COUNSEL ONLY - PROSECUTION BAR





H&S 153912

HIGHLY CONFIDENTIAL - OUTSIDE COUNSEL ONLY - PROSECUTION BAR



H&S 153913

HIGHLY CONFIDENTIAL -- OUTSIDE COUNSEL ONLY -- PROSECUTION BAR



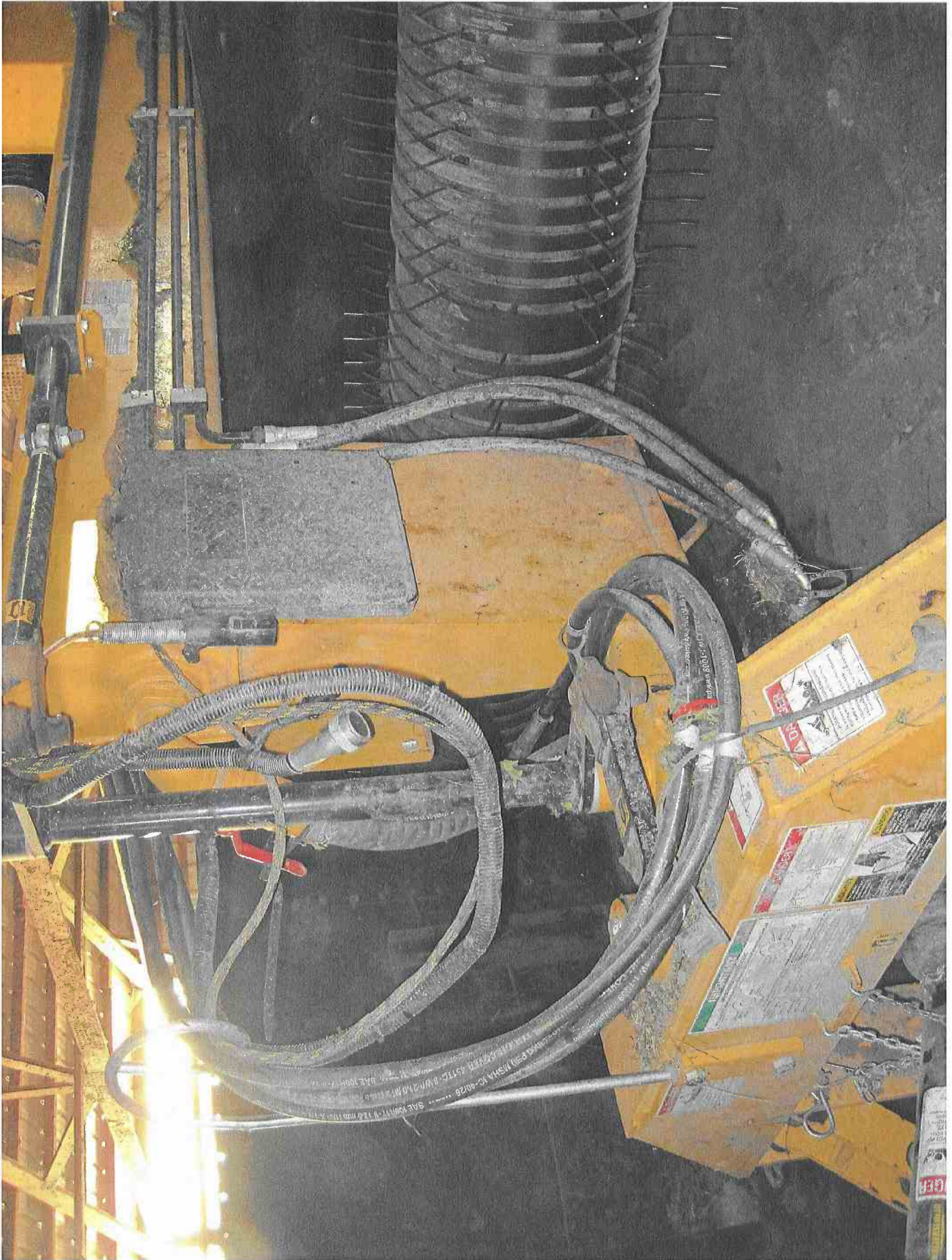
H&S 153914

HIGHLY CONFIDENTIAL - OUTSIDE COUNSEL ONLY - PROSECUTION BAR



H&S 153915

HIGHLY CONFIDENTIAL – OUTSIDE COUNSEL ONLY – PROSECUTION BAR



H&S 153916

HIGHLY CONFIDENTIAL - OUTSIDE COUNSEL ONLY - PROSECUTION BAR





H&S 153918

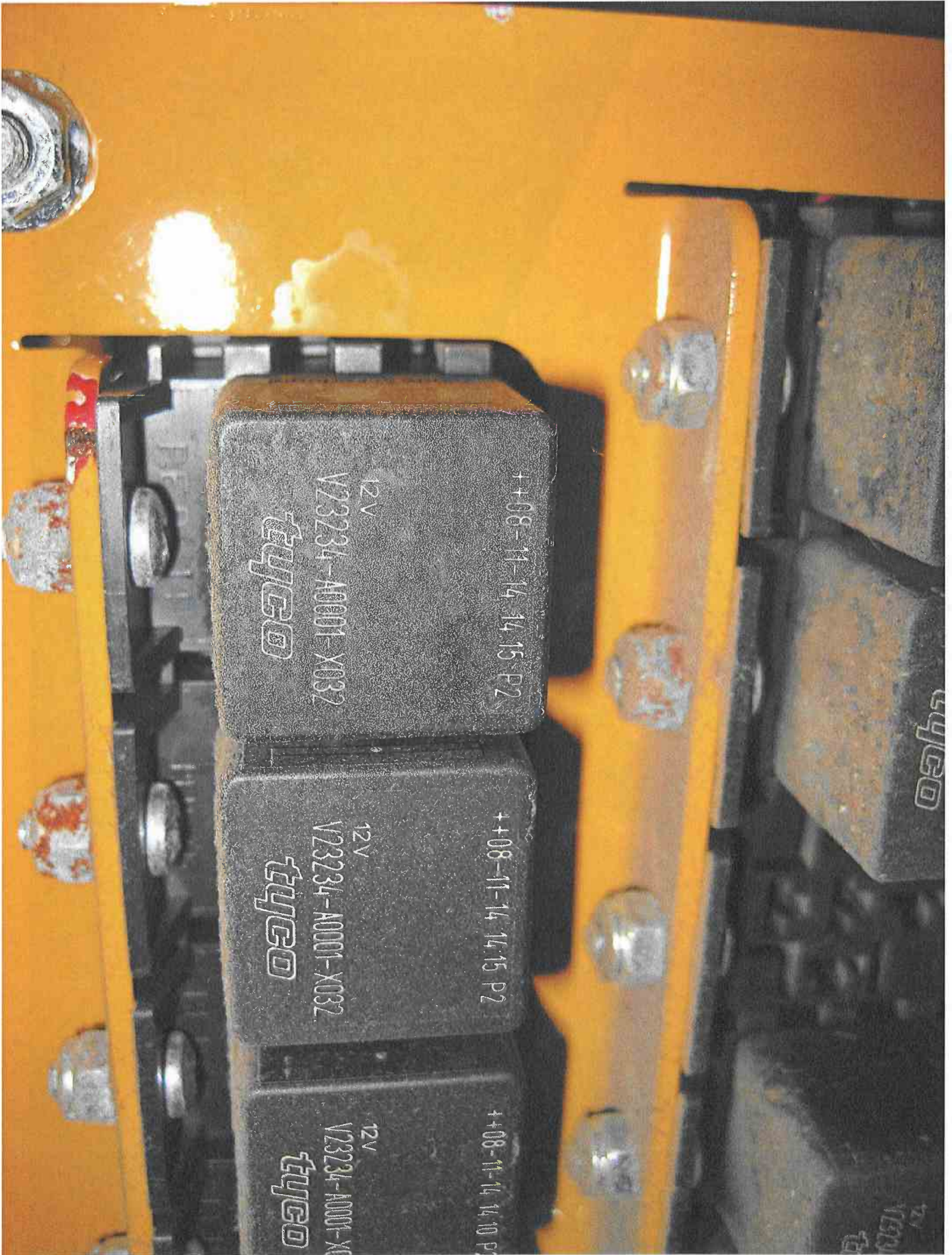
HIGHLY CONFIDENTIAL - OUTSIDE COUNSEL ONLY - PROSECUTION BAR



H&S 153919

HIGHLY CONFIDENTIAL – OUTSIDE COUNSEL ONLY – PROSECUTION BAR







H&S 153922

HIGHLY CONFIDENTIAL - OUTSIDE COUNSEL ONLY - PROSECUTION BAR



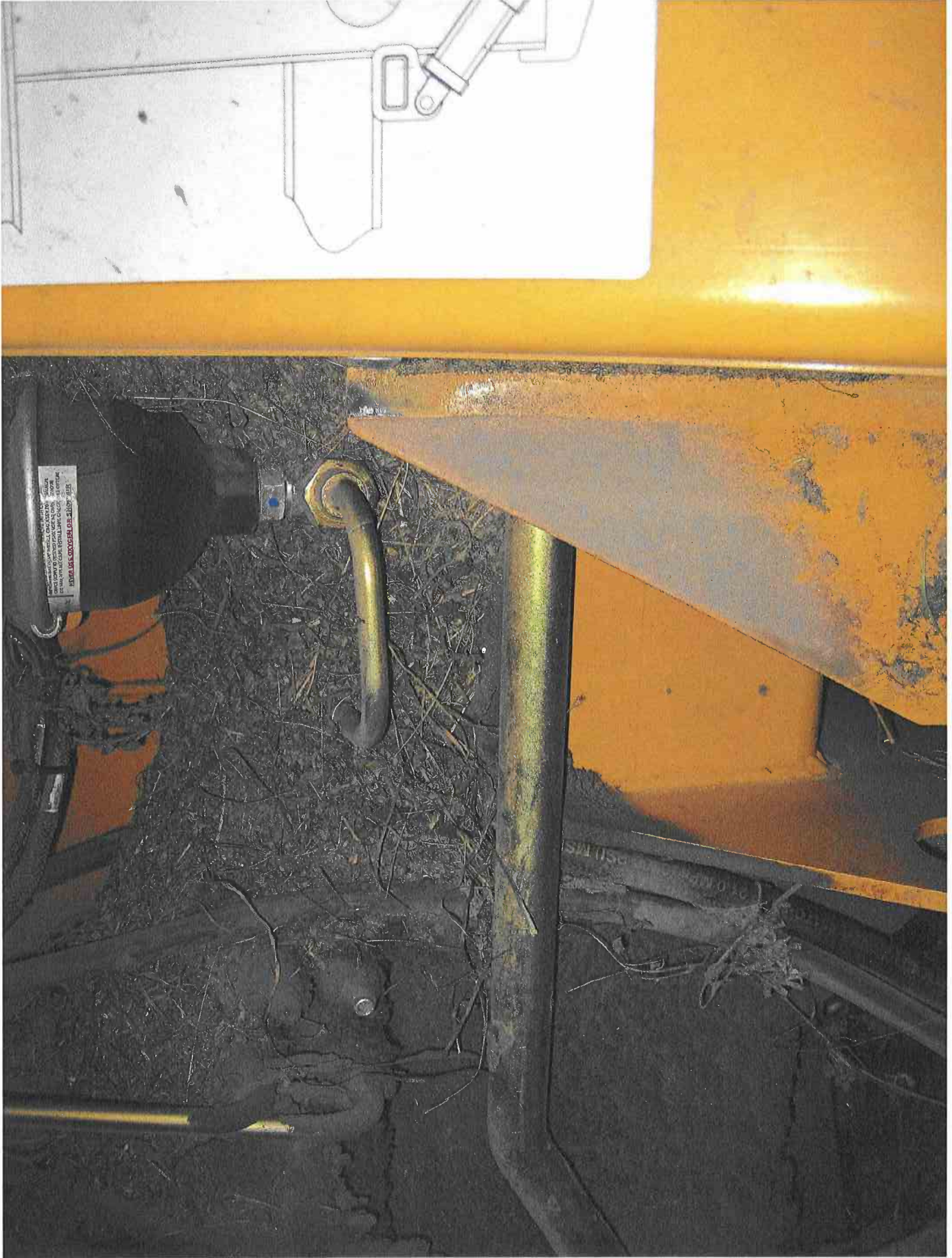
H&S 153923

HIGHLY CONFIDENTIAL - OUTSIDE COUNSEL ONLY - PROSECUTION BAR



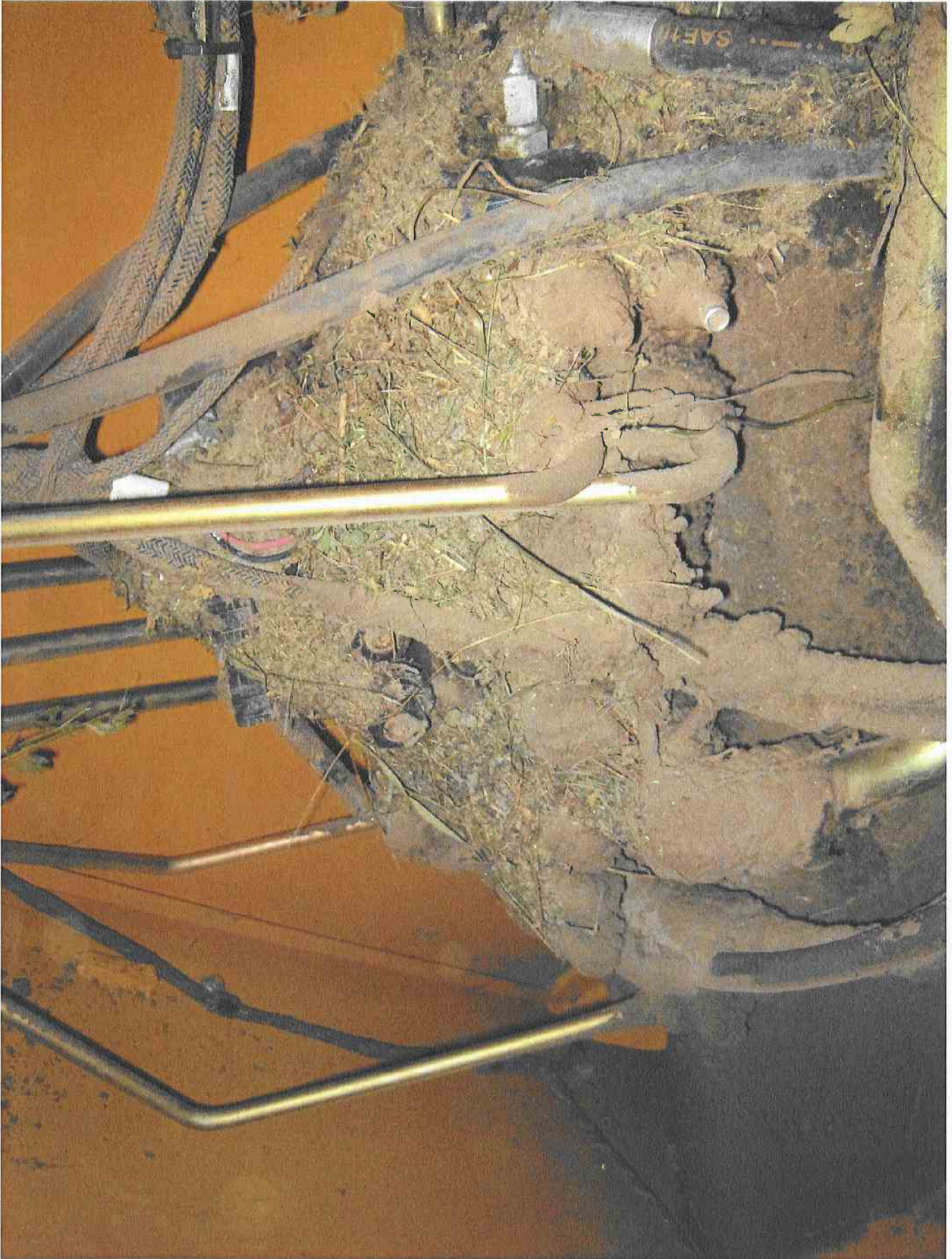
H&S 153924

HIGHLY CONFIDENTIAL -- OUTSIDE COUNSEL ONLY -- PROSECUTION BAR



H&S 153925

HIGHLY CONFIDENTIAL -- OUTSIDE COUNSEL ONLY -- PROSECUTION BAR



H&S 153926

HIGHLY CONFIDENTIAL - OUTSIDE COUNSEL ONLY - PROSECUTION BAR

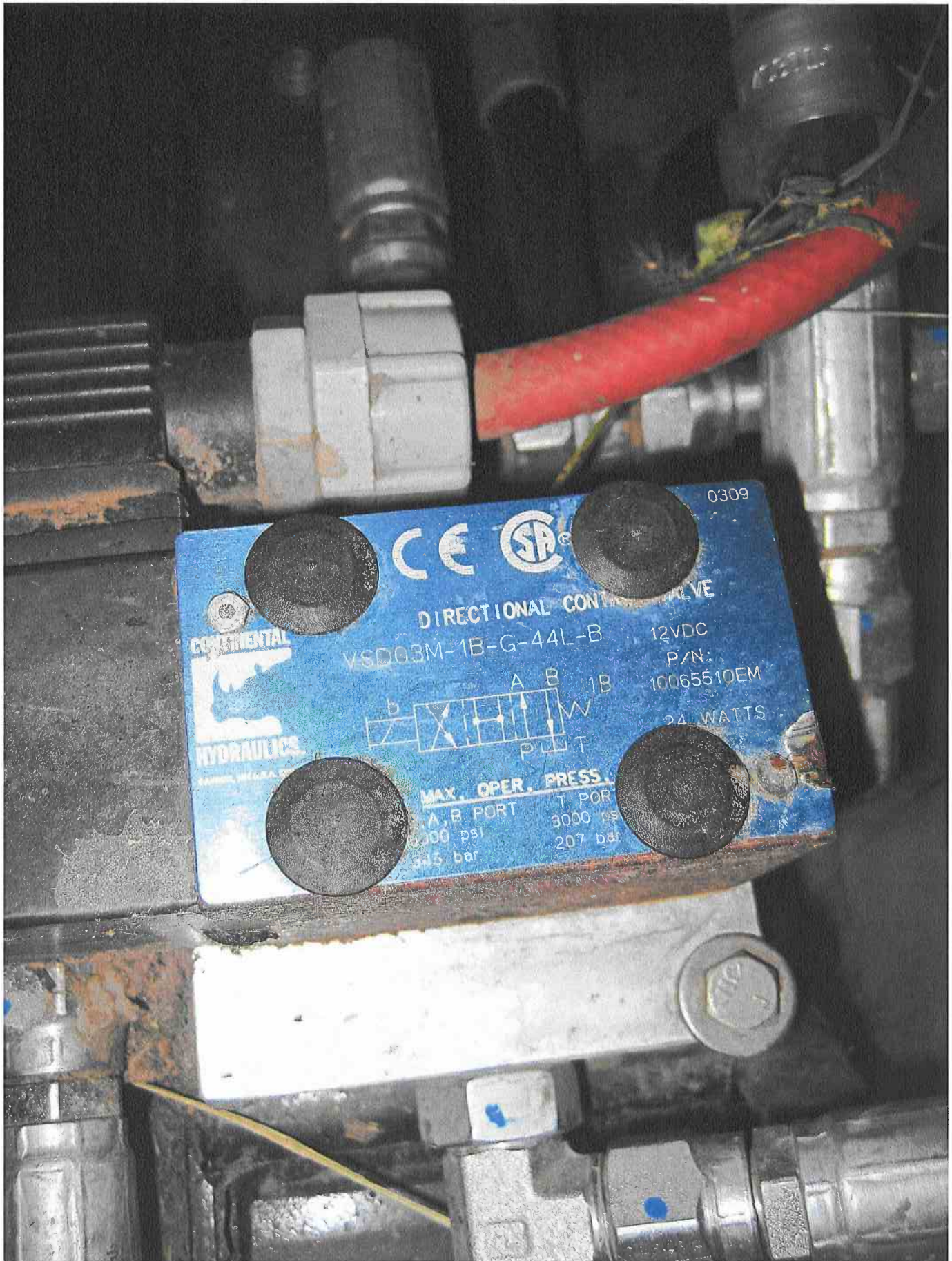


H&S 153927

HIGHLY CONFIDENTIAL – OUTSIDE COUNSEL ONLY – PROSECUTION BAR







0309

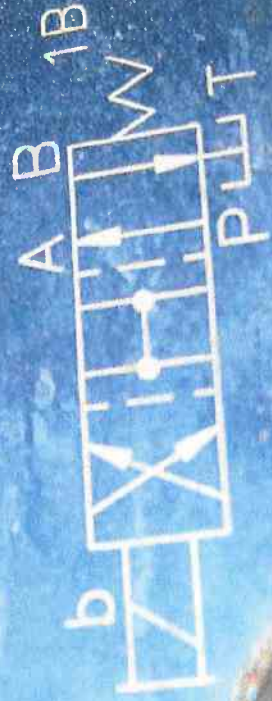


DIRECTIONAL CONTROL VALVE

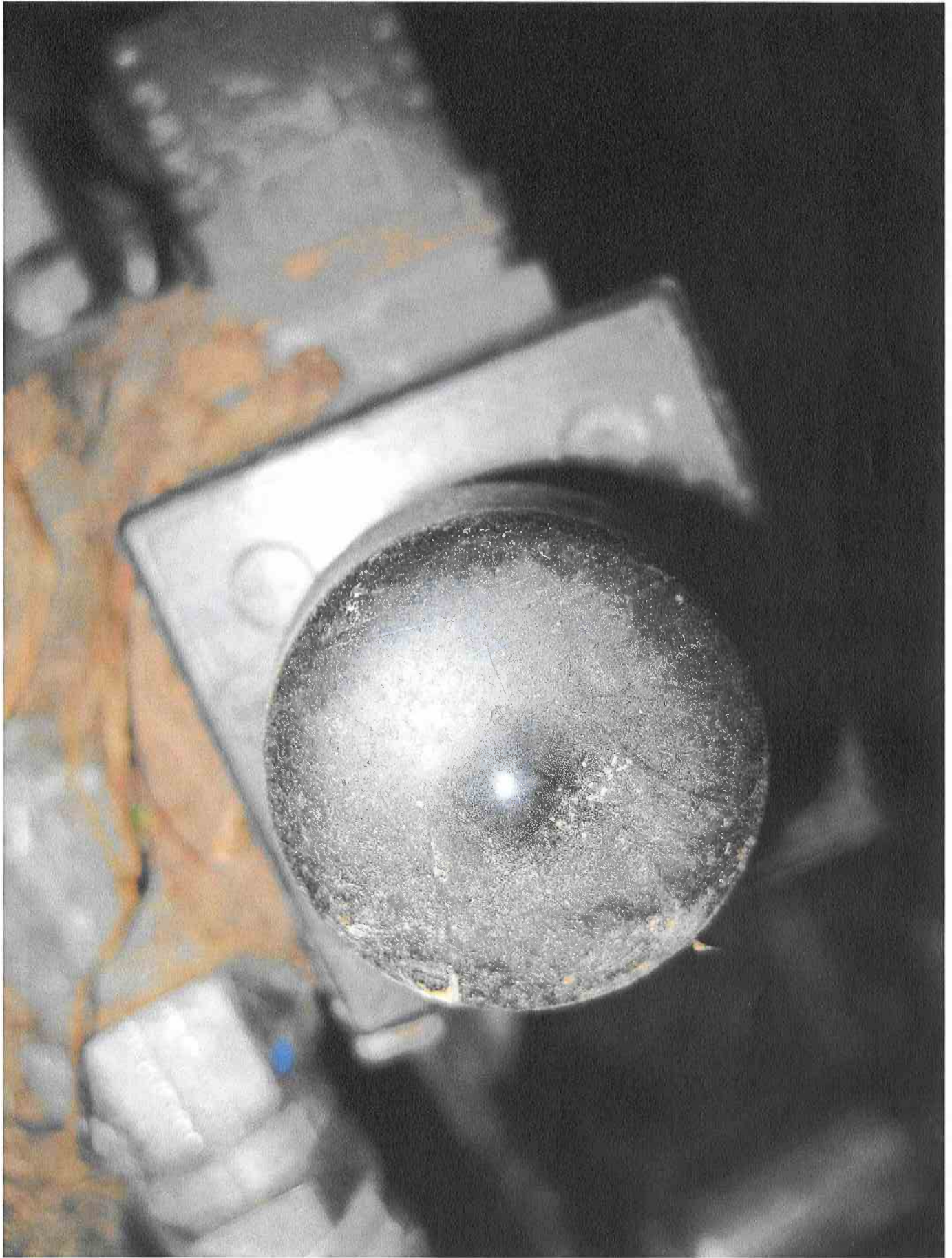
VSD03M-1B-G-44L-B 12VDC

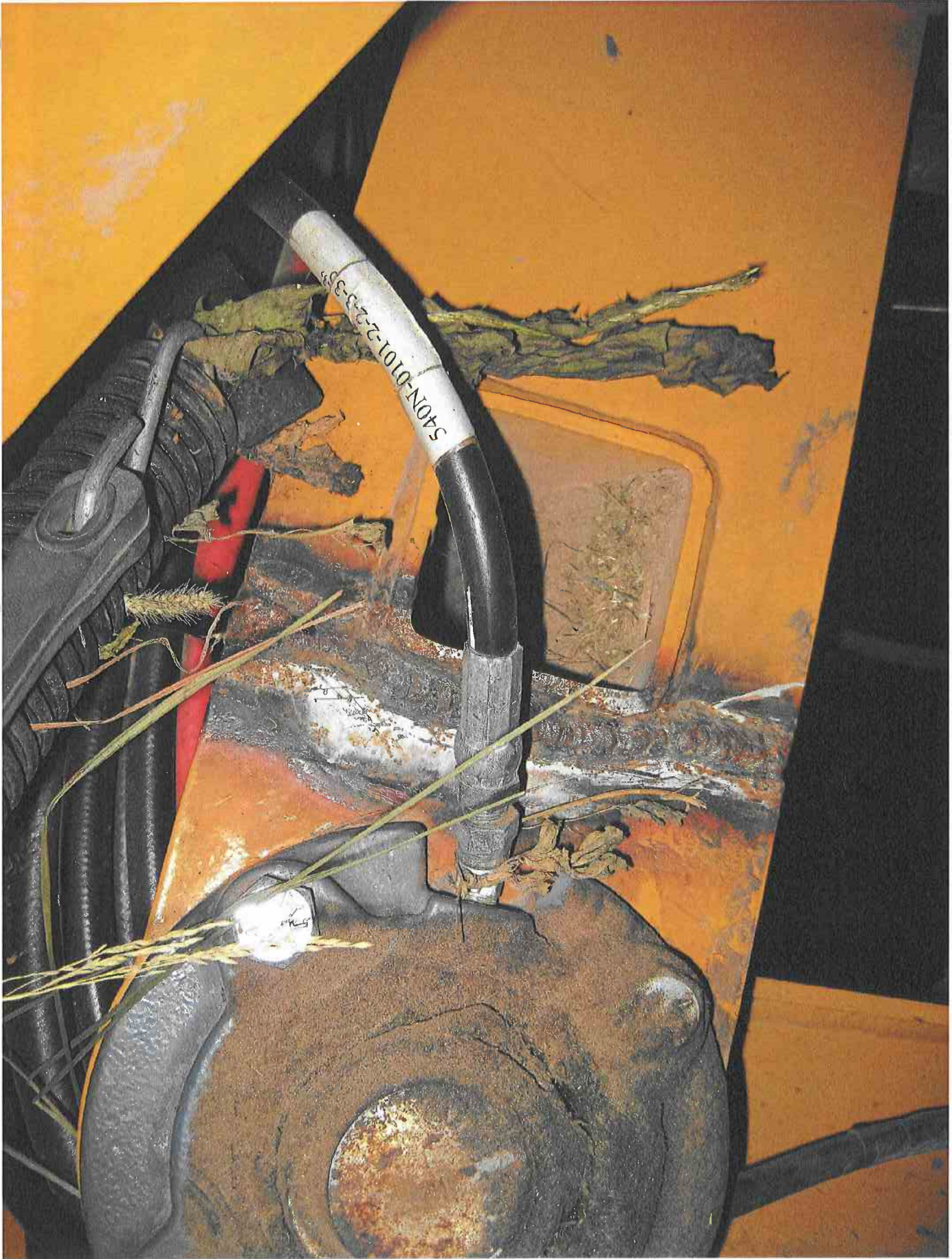
P/N: 10065510EM

24 WATTS



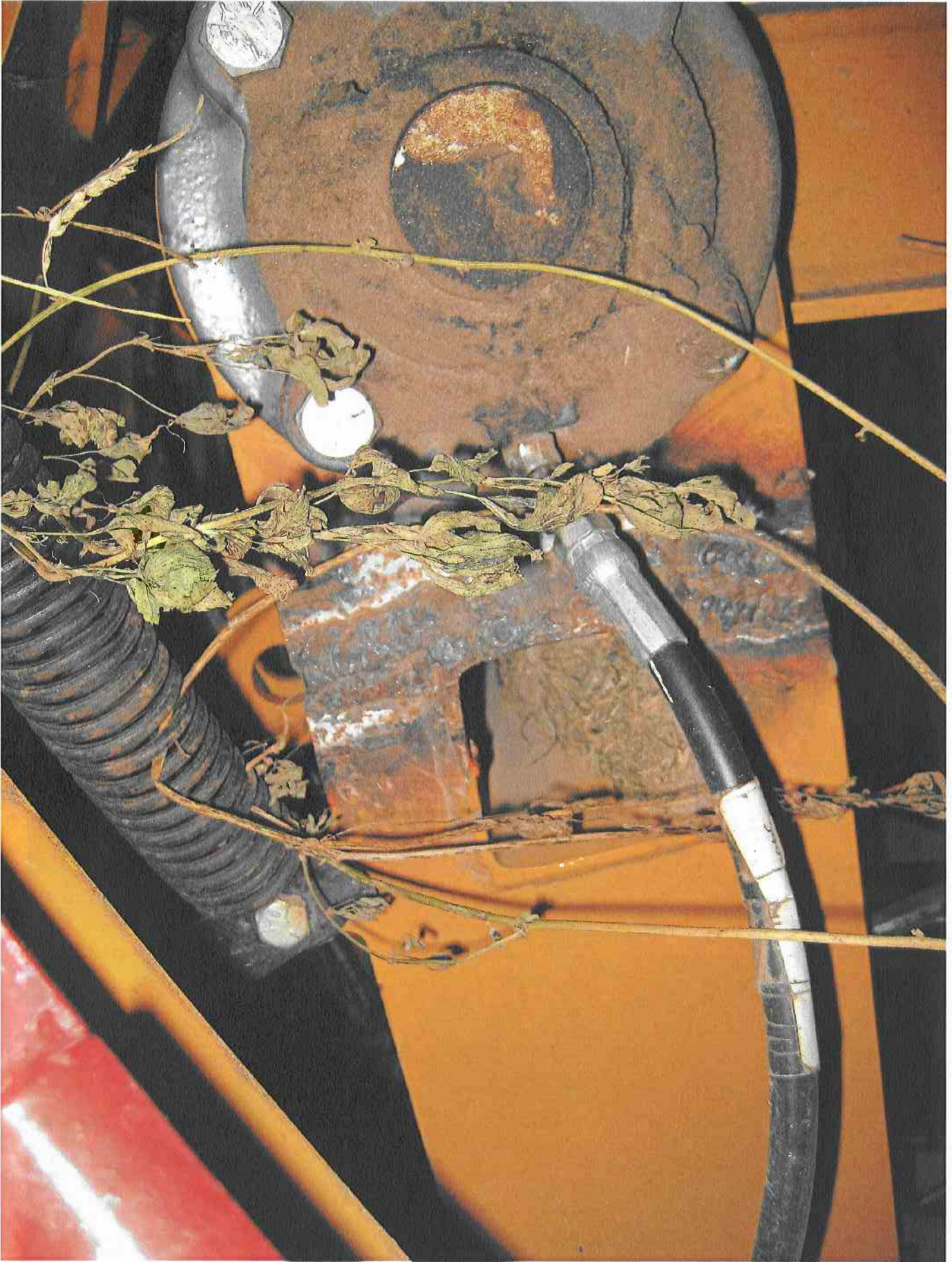
MAX. OPER. PRESS.	
A, B PORT	3000 psi
T PORT	207 bar
345 bar	





H&S 153933

HIGHLY CONFIDENTIAL - OUTSIDE COUNSEL ONLY - PROSECUTION BAR



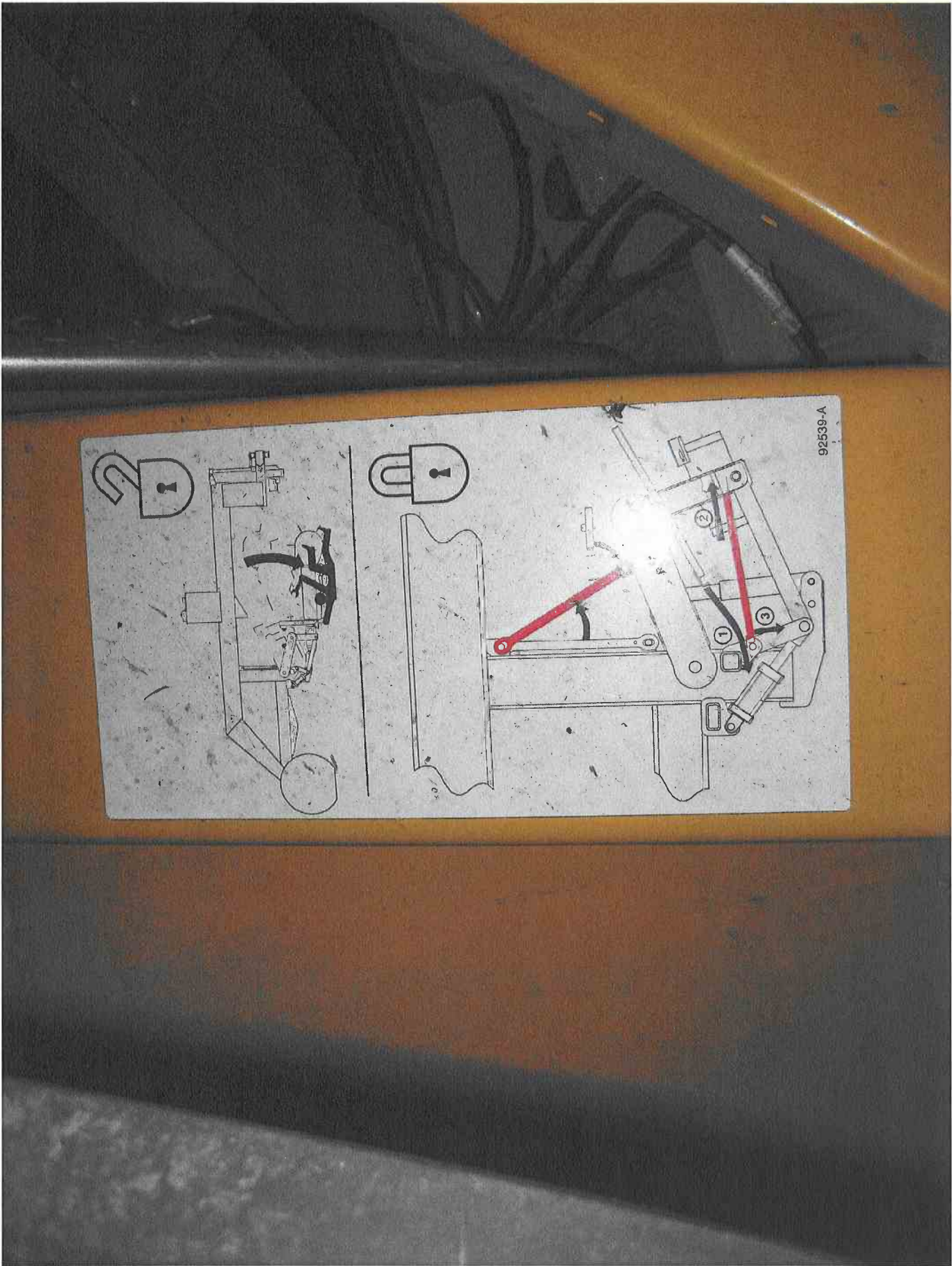
H&S 153934

HIGHLY CONFIDENTIAL - OUTSIDE COUNSEL ONLY - PROSECUTION BAR



H&S 153935

HIGHLY CONFIDENTIAL – OUTSIDE COUNSEL ONLY – PROSECUTION BAR





WARNING



OVERHEAD HAZARD

To prevent serious injury or death:

- Stay away from beneath the wings when they are in the raised position or are being lowered.
- Keep others away.



¡PELIGRO!
 Para reparar, mantener o sacar algún material, ponga el transportador en el suelo.
 Antes de trabajar bajo el transportador de cemento, levante el transportador y ponga el seguro que se encuentra detrás del transportador.
 Entonces detenga el motor y asegúrese que los mecanismos se han detenido.

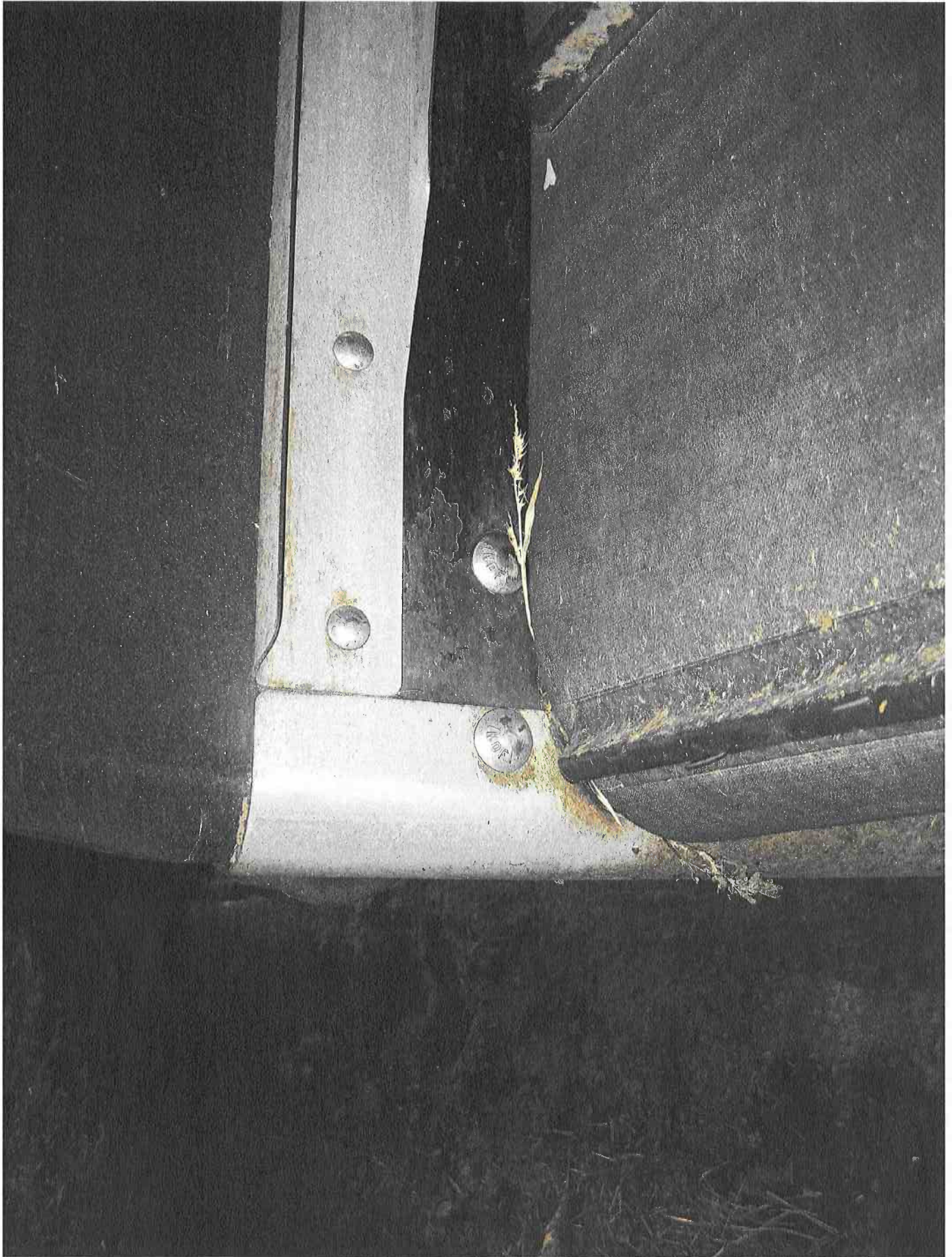


To repair, remove or discharge material, rest conveyor on ground.
 Before working under center conveyor, raise conveyor and engage safety lock in back of conveyor.
 Then shut off engine and be sure mechanism has completely stopped.



**ADJUST
HITCH HEIGHT
TO KEEP THE
TOP OF THE
FRAME TUBE
74" TO 75" FROM
THE GROUND**


OIL IS AT PROPER FILL
LEVEL WHEN VISIBLE
IN BOTTOM OF UPPER
SIGHT GLASS WHEN
OIL IS COLD.
DO NOT OVERFILL SO
THAT OIL IS ABOVE
SIGHT GLASS.







H&S 153942

HIGHLY CONFIDENTIAL - OUTSIDE COUNSEL ONLY - PROSECUTION BAR



H&S 153943

HIGHLY CONFIDENTIAL - OUTSIDE COUNSEL ONLY - PROSECUTION BAR

