



(19) **United States**

(12) **Patent Application Publication** (10) **Pub. No.: US 2001/0025778 A1**

Ono (43) **Pub. Date: Oct. 4, 2001**

(54) **SWITCH FOR GAME CONTROLLER**

(52) **U.S. Cl. 200/512; 200/1 B**

(76) **Inventor: Atsushi Ono, Tokyo (JP)**

(57) **ABSTRACT**

Correspondence Address:

**McGuire Woods,
1750 Tysons Boulevard, Suite 1800
Tysons Corner
McLean, VA 22102-3915 (US)**

(21) **Appl. No.: 09/817,373**

(22) **Filed: Mar. 27, 2001**

(30) **Foreign Application Priority Data**

Mar. 31, 2000 (JP) P. 2000-098693

Publication Classification

(51) **Int. Cl.⁷ H01H 1/10**

In a switch for a game controller, a click rubber is provided in a casing mounted on a base plate and adapted to be deformed and displaced by push-down operation of a button. Contacts are adapted to be operated by the deformation and displacement of the click rubber to control an output of a signal. An conductive body is provided at a lower end part of a body of the click rubber, and the base plate is provided with an upper contact and a lower contact which are vertically apart from each other and opposed to the conductive body. The lower contact is covered with a first resist formed of an inductive body, the upper contact is mounted on a second resist and arranged at a position higher than height of the first resist covering the lower contact.

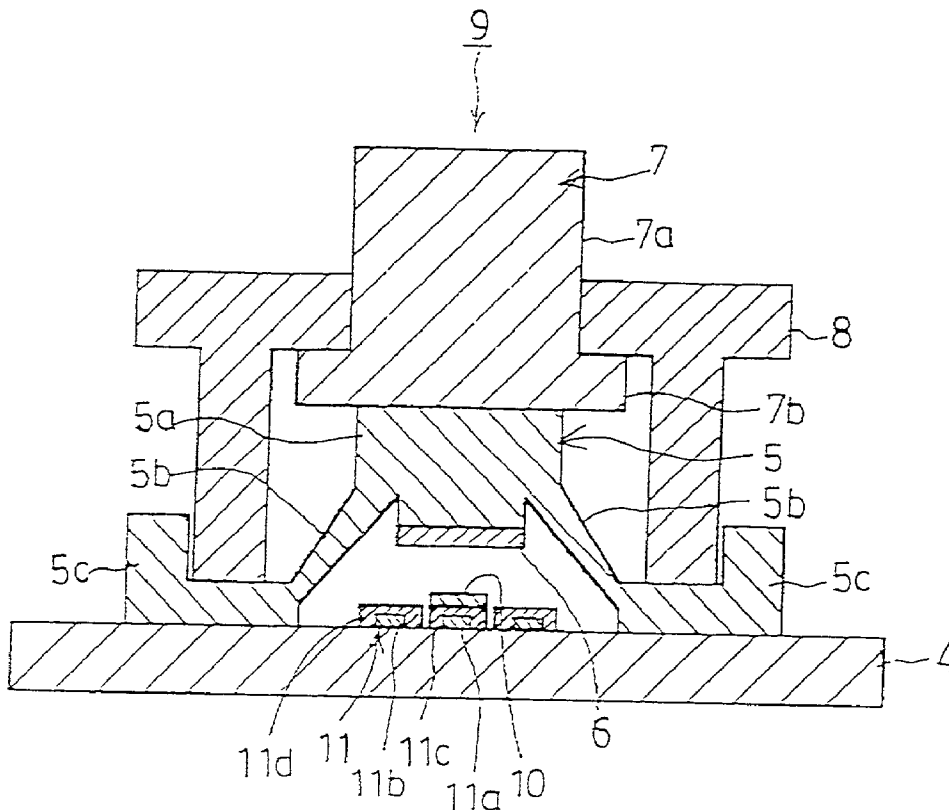


Fig. 1

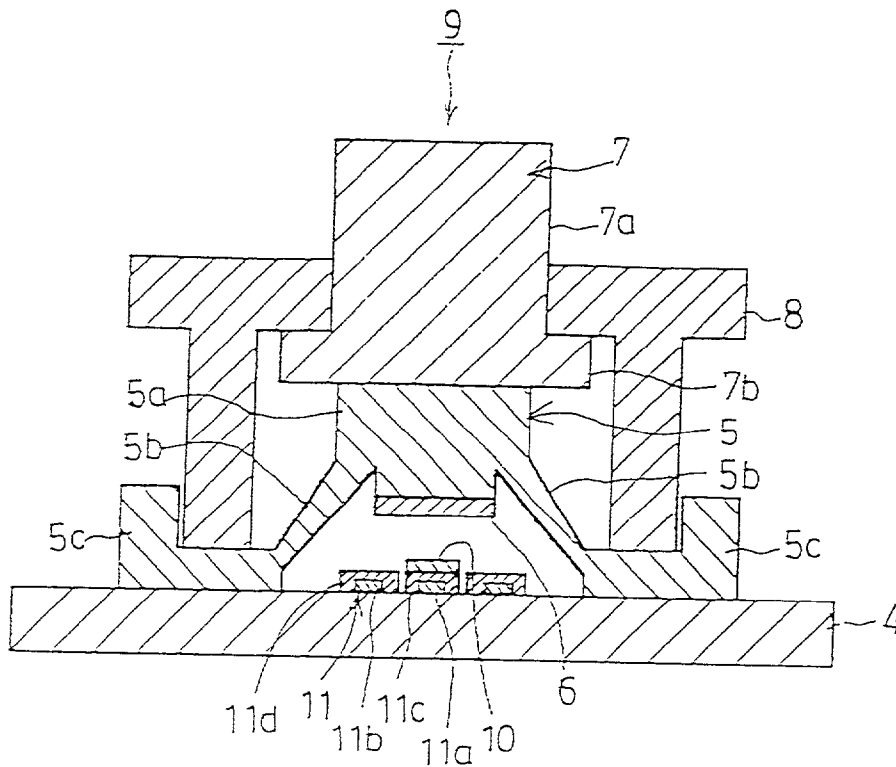


Fig. 2

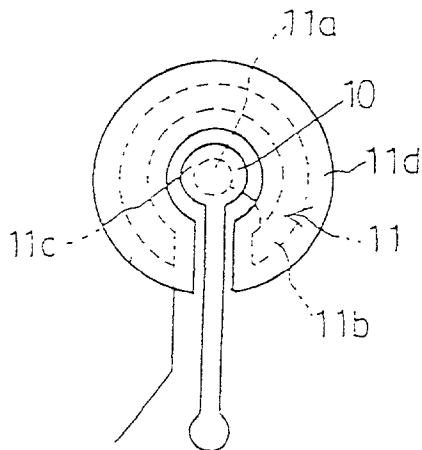


Fig. 3

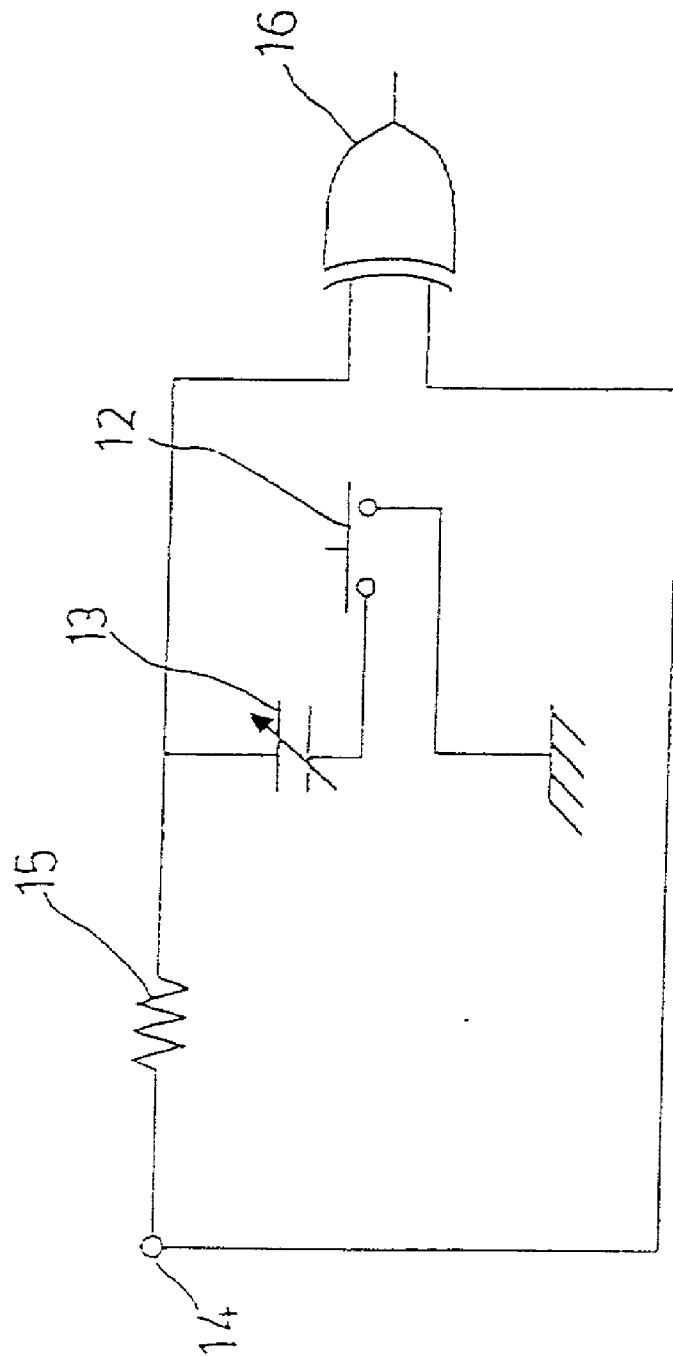


Fig. 4

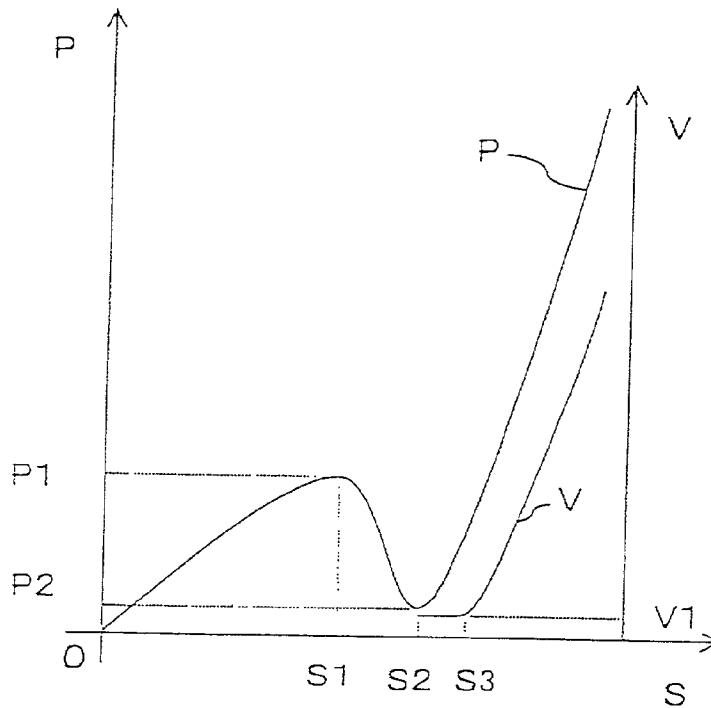


Fig. 5

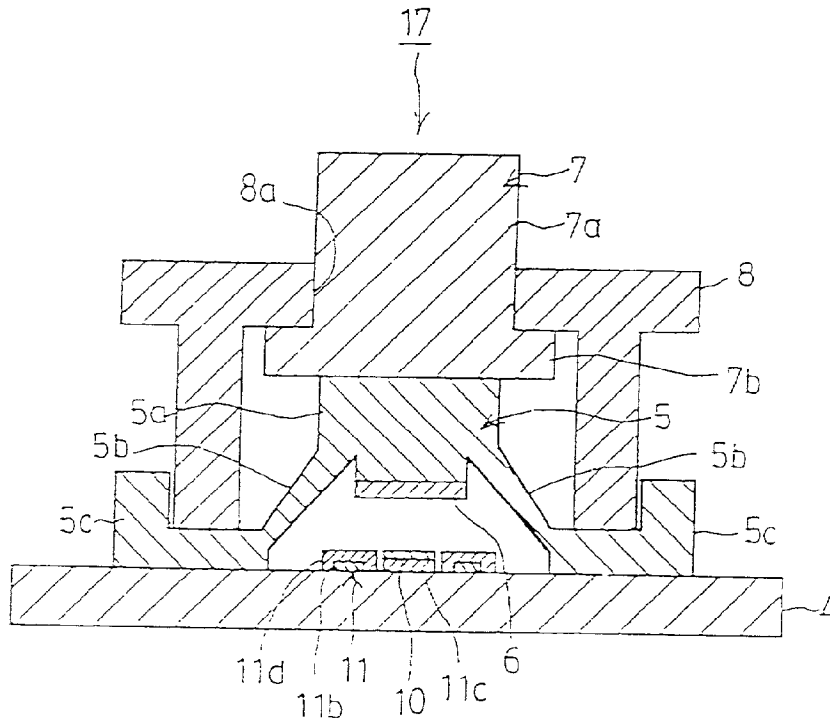
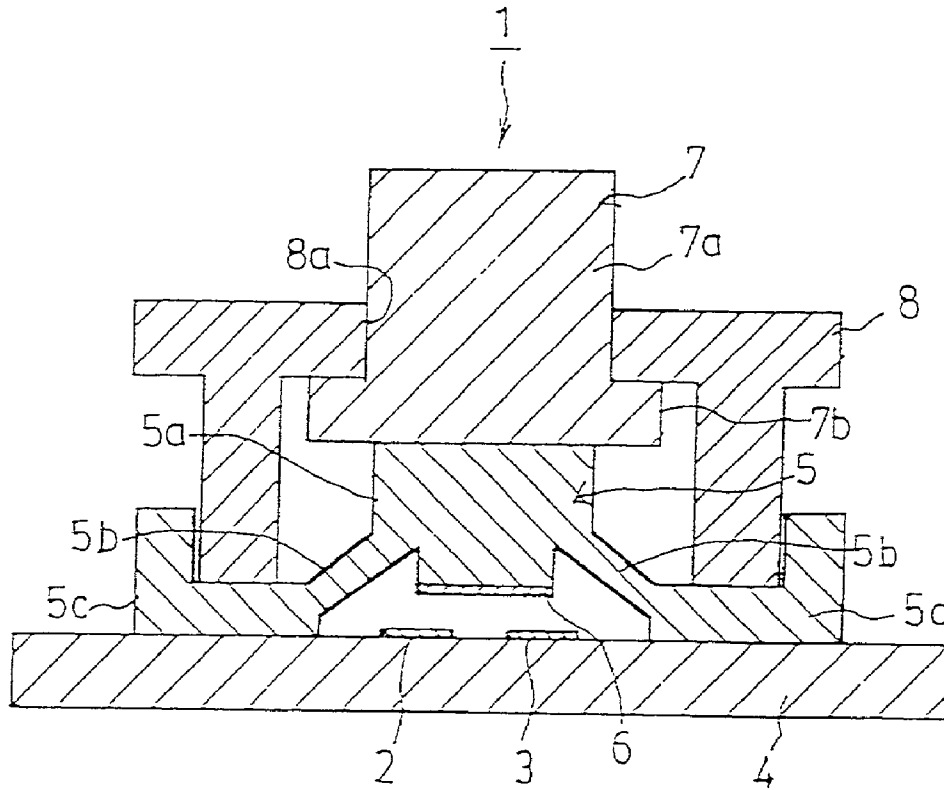


Fig. 6



Explore Litigation Insights

Docket Alarm provides insights to develop a more informed litigation strategy and the peace of mind of knowing you're on top of things.

Real-Time Litigation Alerts



Keep your litigation team up-to-date with **real-time alerts** and advanced team management tools built for the enterprise, all while greatly reducing PACER spend.

Our comprehensive service means we can handle Federal, State, and Administrative courts across the country.

Advanced Docket Research



With over 230 million records, Docket Alarm's cloud-native docket research platform finds what other services can't. Coverage includes Federal, State, plus PTAB, TTAB, ITC and NLRB decisions, all in one place.

Identify arguments that have been successful in the past with full text, pinpoint searching. Link to case law cited within any court document via Fastcase.

Analytics At Your Fingertips



Learn what happened the last time a particular judge, opposing counsel or company faced cases similar to yours.

Advanced out-of-the-box PTAB and TTAB analytics are always at your fingertips.

API

Docket Alarm offers a powerful API (application programming interface) to developers that want to integrate case filings into their apps.

LAW FIRMS

Build custom dashboards for your attorneys and clients with live data direct from the court.

Automate many repetitive legal tasks like conflict checks, document management, and marketing.

FINANCIAL INSTITUTIONS

Litigation and bankruptcy checks for companies and debtors.

E-DISCOVERY AND LEGAL VENDORS

Sync your system to PACER to automate legal marketing.