



US008678550B2

(12) **United States Patent**  
**Silverbrook**

(10) **Patent No.:** **US 8,678,550 B2**  
(45) **Date of Patent:** **\*Mar. 25, 2014**

(54) **PRINthead ASSEMBLY WITH LAMINATED INK DISTRIBUTION STACK**

(75) Inventor: **Kia Silverbrook**, Balmain (AU)  
(73) Assignee: **Zamtec Ltd**, Dublin (IE)  
(\* ) Notice: Subject to any disclaimer, the term of this patent is extended or adjusted under 35 U.S.C. 154(b) by 793 days.  
This patent is subject to a terminal disclaimer.

(21) Appl. No.: **12/834,893**

(22) Filed: **Jul. 13, 2010**

(65) **Prior Publication Data**  
US 2010/0277538 A1 Nov. 4, 2010

**Related U.S. Application Data**

(63) Continuation of application No. 11/779,845, filed on Jul. 18, 2007, now Pat. No. 7,758,181, which is a continuation of application No. 11/227,240, filed on Sep. 16, 2005, now Pat. No. 7,258,430, which is a continuation of application No. 10/974,751, filed on Oct. 28, 2004, now Pat. No. 6,966,625, which is a continuation of application No. 10/296,438, filed as application No. PCT/AU00/00597 on May 24, 2000, now Pat. No. 6,824,242.

(51) **Int. Cl.**  
**B41J 2/155** (2006.01)  
(52) **U.S. Cl.**  
USPC ..... **347/42**  
(58) **Field of Classification Search**  
USPC ..... 347/20, 29, 50, 104, 108; 400/649  
See application file for complete search history.

(56) **References Cited**

U.S. PATENT DOCUMENTS

5,316,395	A	5/1994	Imai
5,451,991	A	9/1995	Saito et al.
5,565,900	A	10/1996	Cowger
5,757,398	A	5/1998	Anderson
5,929,877	A	7/1999	Hetzer
5,963,234	A	10/1999	Miyazawa
5,997,125	A	12/1999	Nishioka
6,003,971	A	12/1999	Hanks
6,050,679	A	4/2000	Howkins
6,250,738	B1	6/2001	Waller
6,322,206	B1	11/2001	Boyd
6,322,677	B1	11/2001	Woodruff

(Continued)

FOREIGN PATENT DOCUMENTS

EP	0584823	2/1994
EP	0598701	A 5/1994

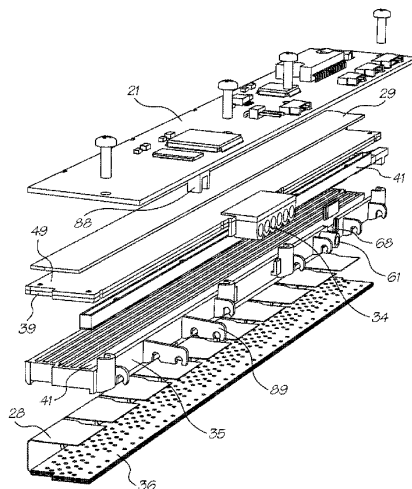
(Continued)

Primary Examiner — Anh T. N. Vo  
(74) Attorney, Agent, or Firm — Cooley LLP

(57) **ABSTRACT**

A print engine assembly includes an elongate chassis defining a print media exit slot; an elongate printhead assembly mounted relative to the chassis and configured to eject ink onto print media; a paper feed mechanism configured to transport the print media past the elongate printhead and out through the exit slot, the paper feed mechanism comprising a pair of bearing moldings received within and mounted on opposite ends of the chassis, the paper feed mechanism further comprising at least one roller mounted between the bearing moldings and a motor mounted to one of said bearing moldings to drive said at least one roller; and a platen member extending parallel to the printhead, the platen member mounted in the bearing moldings. A pair of spacers is mounted to either end of the chassis and on which said printhead assembly is mounted.

**4 Claims, 22 Drawing Sheets**



# US 8,678,550 B2

Page 2

(56)

## References Cited

### U.S. PATENT DOCUMENTS

6,488,422	B1	12/2002	Silverbrook	
6,788,336	B1	9/2004	Silverbrook	
6,966,625	B2	11/2005	Silverbrook	
6,988,784	B2	1/2006	Silverbrook	
7,114,868	B2 *	10/2006	Silverbrook	400/649
7,328,994	B2 *	2/2008	Silverbrook	347/104
7,407,259	B2 *	8/2008	Silverbrook	347/40
7,425,053	B2 *	9/2008	Silverbrook	347/42
7,686,416	B2 *	3/2010	Silverbrook	347/20
7,740,338	B2 *	6/2010	Silverbrook	347/42
7,758,181	B2 *	7/2010	Silverbrook	347/104
7,789,485	B2 *	9/2010	Silverbrook	347/42

2002/0018090	A1	2/2002	Takizawa	
2003/0107619	A1	6/2003	Kitahara	
2009/0027454	A1 *	1/2009	Silverbrook	347/50

### FOREIGN PATENT DOCUMENTS

EP	0936077	A	8/1999
GB	2115748		9/1983
JP	04-229274		8/1992
JP	08-336984		12/1996
JP	09-141883		6/1997
JP	11179900		7/1999
JP	2000-6430		1/2000
JP	2000-141691		5/2000

\* cited by examiner

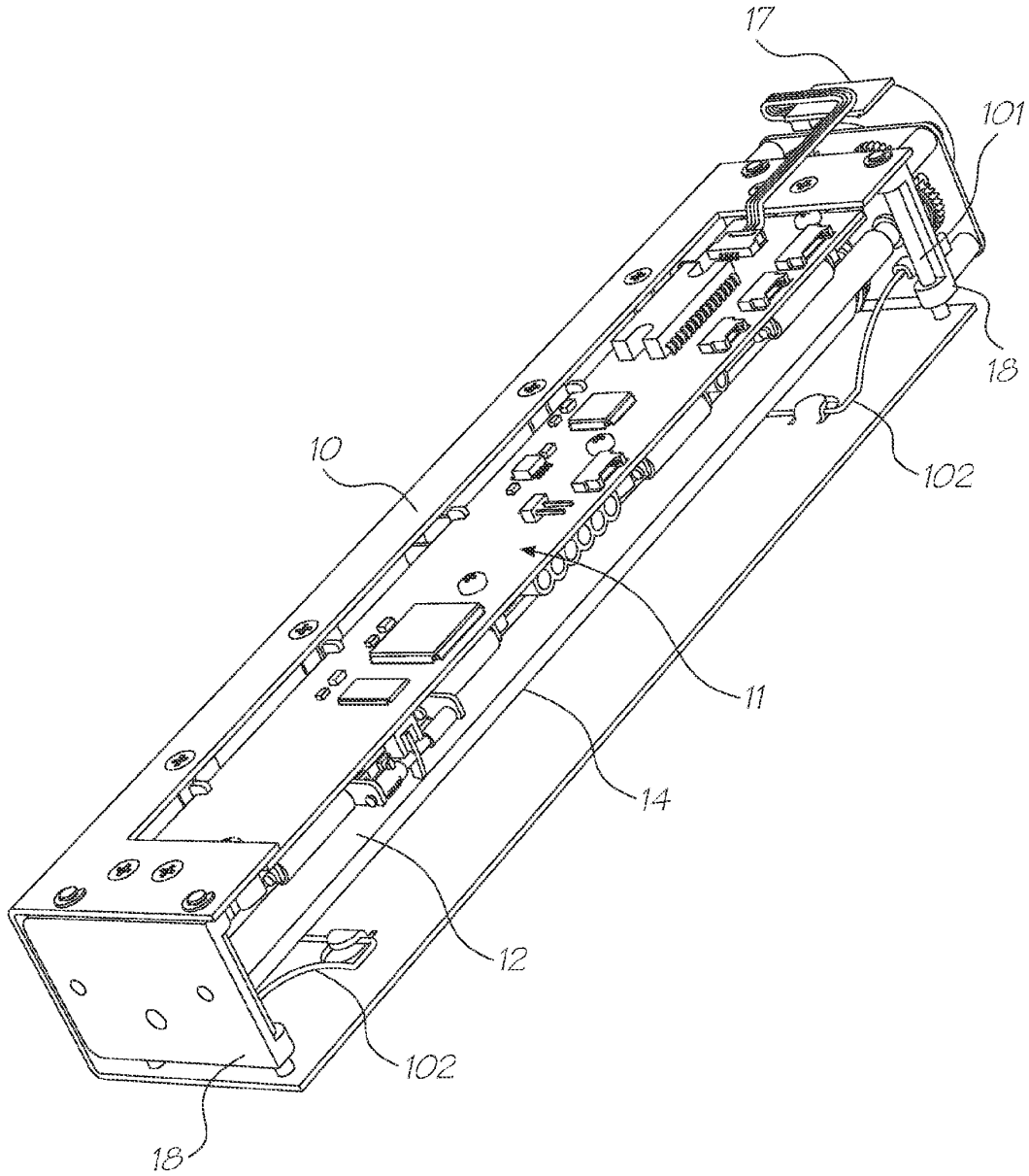


FIG. 1

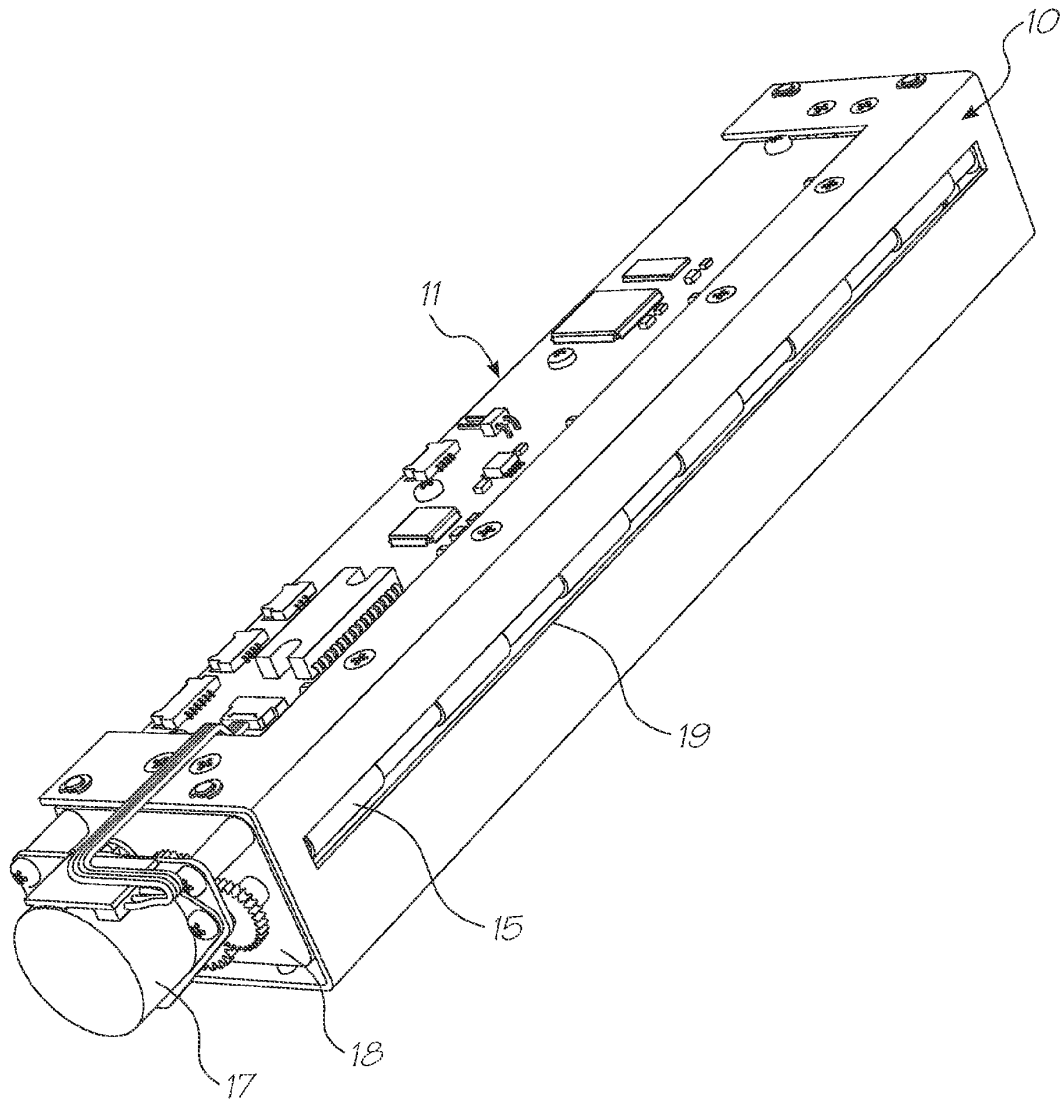


FIG. 2

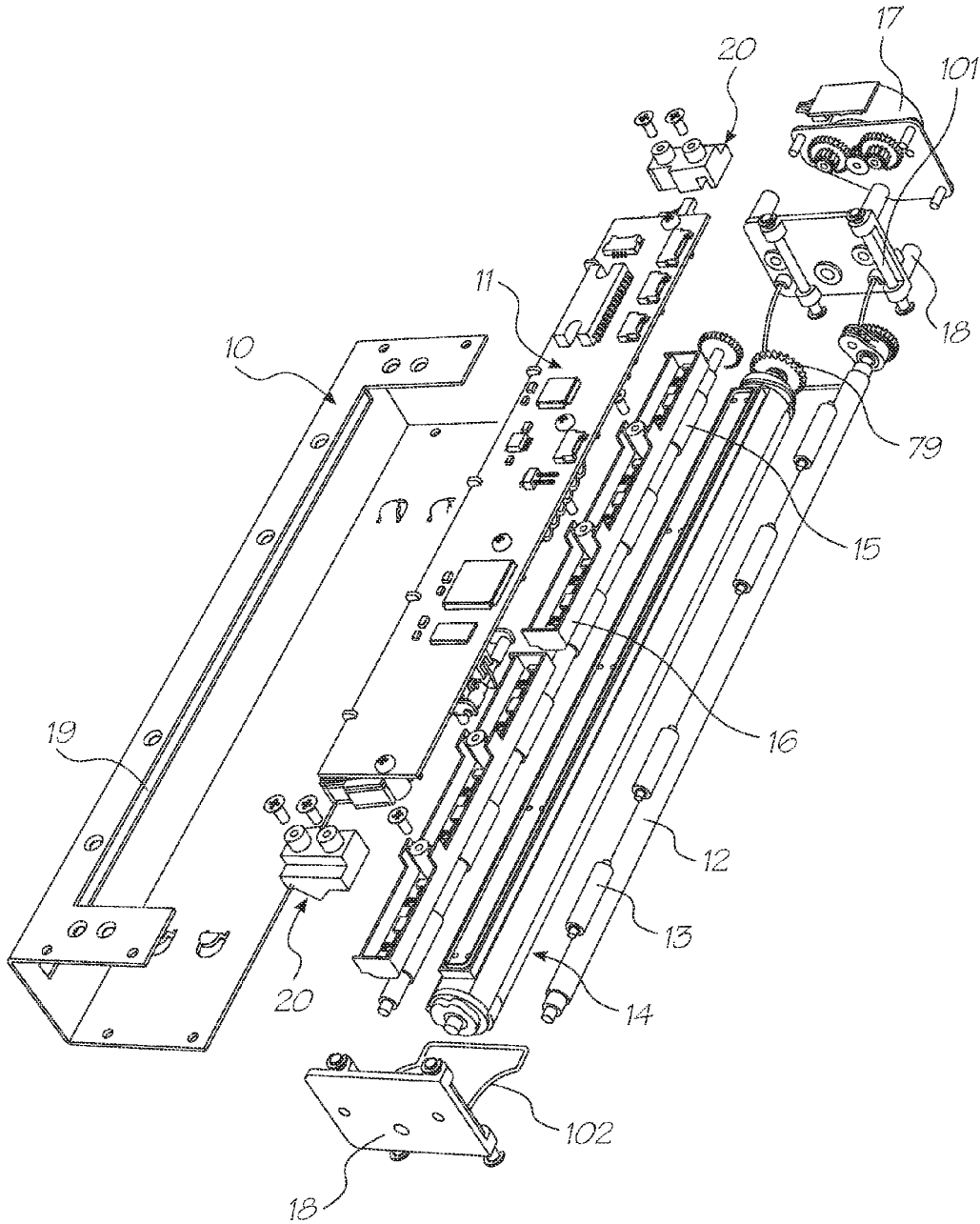


FIG. 3

# Explore Litigation Insights

Docket Alarm provides insights to develop a more informed litigation strategy and the peace of mind of knowing you're on top of things.

## Real-Time Litigation Alerts



Keep your litigation team up-to-date with **real-time alerts** and advanced team management tools built for the enterprise, all while greatly reducing PACER spend.

Our comprehensive service means we can handle Federal, State, and Administrative courts across the country.

## Advanced Docket Research



With over 230 million records, Docket Alarm's cloud-native docket research platform finds what other services can't. Coverage includes Federal, State, plus PTAB, TTAB, ITC and NLRB decisions, all in one place.

Identify arguments that have been successful in the past with full text, pinpoint searching. Link to case law cited within any court document via Fastcase.

## Analytics At Your Fingertips



Learn what happened the last time a particular judge, opposing counsel or company faced cases similar to yours.

Advanced out-of-the-box PTAB and TTAB analytics are always at your fingertips.

## API

Docket Alarm offers a powerful API (application programming interface) to developers that want to integrate case filings into their apps.

## LAW FIRMS

Build custom dashboards for your attorneys and clients with live data direct from the court.

Automate many repetitive legal tasks like conflict checks, document management, and marketing.

## FINANCIAL INSTITUTIONS

Litigation and bankruptcy checks for companies and debtors.

## E-DISCOVERY AND LEGAL VENDORS

Sync your system to PACER to automate legal marketing.