

- [54] **MONITORING AND REPORTING SYSTEM FOR REMOTE TERMINALS**
- [75] Inventors: **W. Hampton Pitts; Ronald G. Thomas**, both of Nashville, Tenn.
- [73] Assignee: **Access Corporation**, Nashville, Tenn.
- [21] Appl. No.: **11,976**
- [22] Filed: **Feb. 6, 1987**
- [51] Int. Cl.⁴ **H04H 9/00; G06F 15/20**
- [52] U.S. Cl. **364/464.01; 358/84; 358/86; 364/550; 379/92; 379/106; 455/2; 455/4; 455/5**
- [58] **Field of Search** 340/526, 825.06, 825.07, 340/825.08, 825.15, 825.31, 825.5, 825.35; 358/84, 85, 86; 379/65, 66, 106, 92; 364/550, 464.01; 380/23; 455/2, 4, 5
- [56] **References Cited**

U.S. PATENT DOCUMENTS

Re. 31,735	11/1984	Davidson	380/17
3,588,357	6/1971	Sellari, Jr.	379/107
3,911,204	10/1975	Spinelli	380/13
3,968,327	7/1976	Gregg, III	455/4 X
3,987,246	10/1976	Willis	379/106
4,008,369	2/1977	Theurer et al.	358/84
4,104,486	8/1978	Martin et al.	340/825.38 X
4,126,762	11/1978	Martin et al.	379/106
4,163,254	7/1979	Block et al.	380/19 X
4,225,884	9/1980	Block et al.	358/84 X
4,241,237	12/1980	Paraskevacos et al.	379/102
4,245,245	1/1981	Matsumoto et al.	358/84 X
4,258,386	3/1981	Cheung	358/84
4,361,851	11/1982	Asip et al.	455/5 X
4,381,522	4/1983	Lambert	455/5 X
4,394,540	7/1983	Willis et al.	379/104
4,418,424	11/1983	Kawamoto et al.	455/4
4,484,217	11/1984	Block et al.	358/84
4,486,773	12/1984	Okubo	455/5 X
4,528,589	7/1985	Block et al.	358/84 X
4,533,949	8/1985	Fujimura et al.	380/5
4,554,579	11/1985	Citta	358/86
4,558,464	12/1985	O'Brien, Jr.	455/5 X
4,566,030	1/1986	Nickerson et al.	379/92
4,577,224	3/1986	Ost	380/20
4,584,602	4/1986	Nakagawa	379/92
4,590,516	5/1986	Abraham	358/86
4,616,263	10/1986	Eichelberger	358/185
4,630,108	12/1986	Gomersall	358/84
4,712,238	12/1987	Gilhousen et al.	358/84 X
4,759,060	7/1988	Hayashi et al.	455/2 X

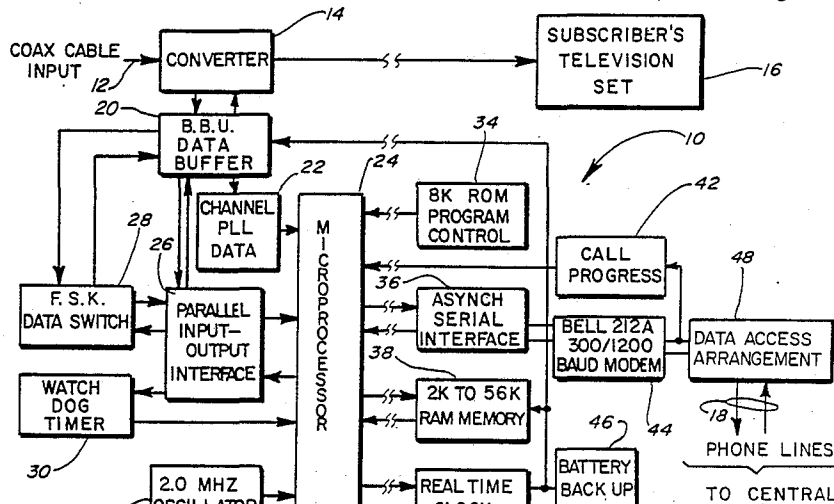
4,833,710 5/1989 Hirashima 455/2 X

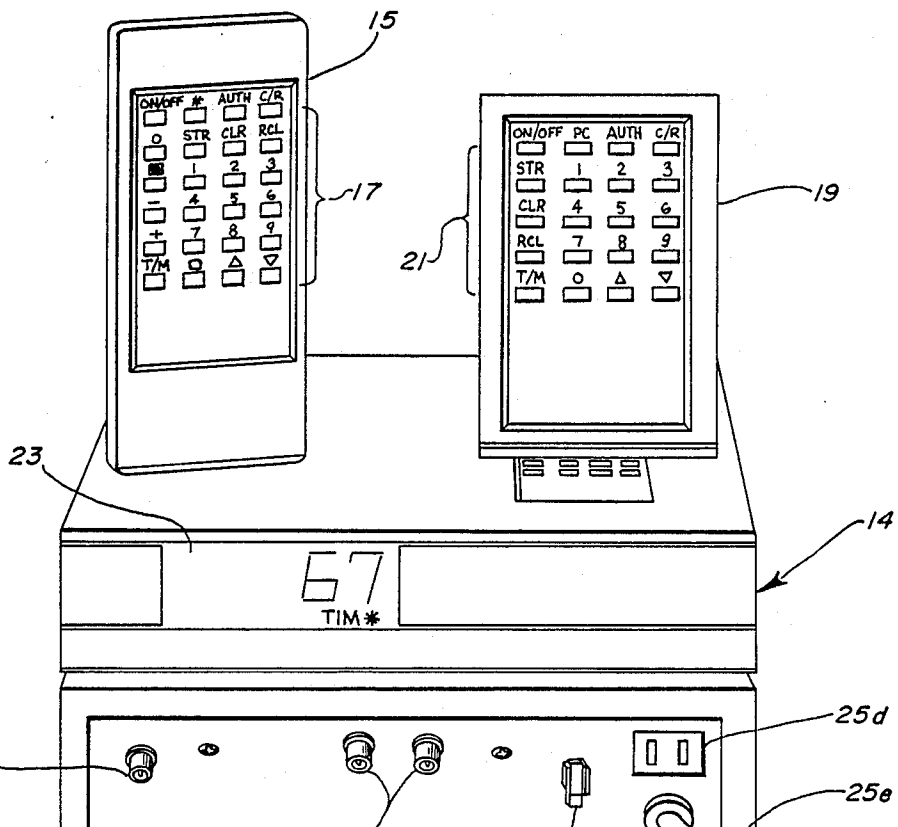
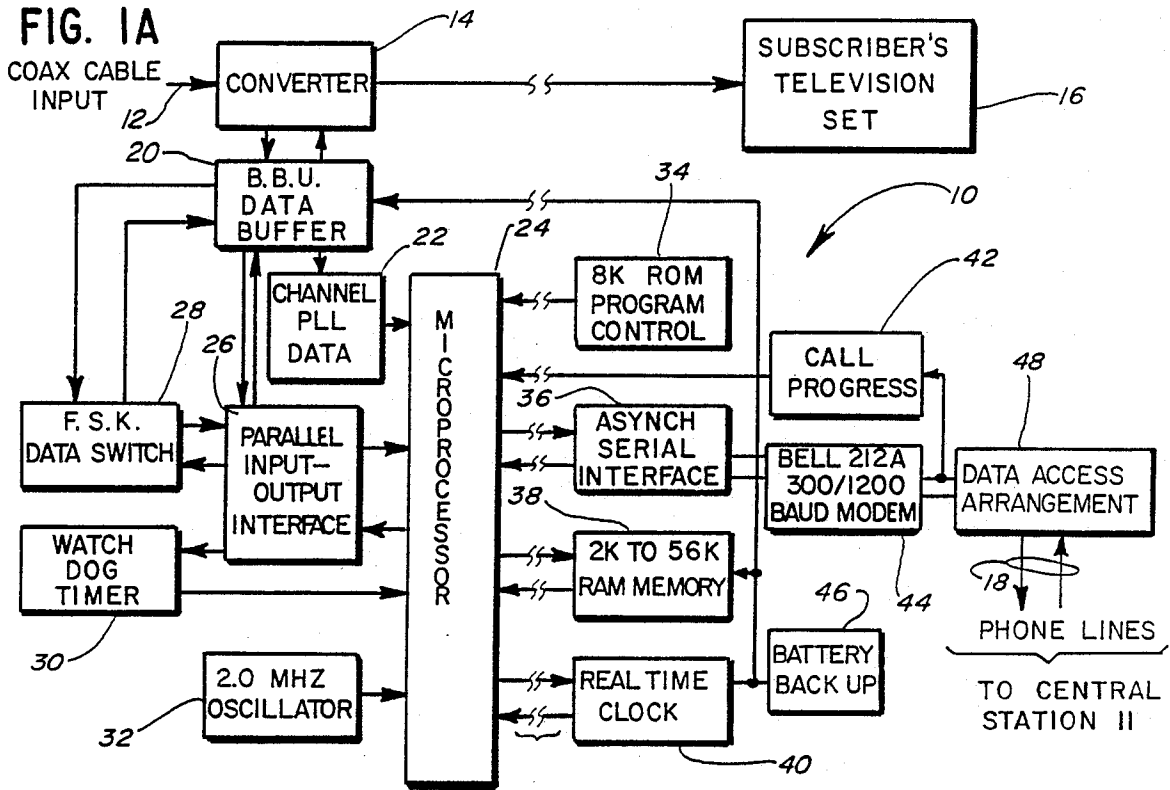
Primary Examiner—Parshotam S. Lall
 Assistant Examiner—Edward R. Cosimano
 Attorney, Agent, or Firm—Neuman, Williams, Anderson & Olson

[57] **ABSTRACT**

A system is disclosed for monitoring and accumulating data indicative of viewer authorized pay per view TV programs at each of a plurality of remote terminals, wherein each remote terminal is coupled illustratively by non-dedicated telephone lines to a host computer at a central station. The remote terminal includes viewer actuatable means for authorizing the viewing of a pay per TV program, a memory, means responsive to the authorizing of a program for storing data indicative of the authorized program into the memory, and means responsive to the authorizing of the pay per view TV program for transmitting over the telephone lines to the host computer a report message including the program data. Security features are adopted for the remote terminal of this invention to prevent the viewer interference with the monitoring and/or reporting of the report message to the host computer as by removing energization from the remote terminal and/or disconnecting the telephone lines from the remote terminal. Further, the viewer is given a preview of an authorized pay per view program, whereby the viewer will be billed for that program only if the viewer views the authorized program for a time greater than a preview period. In order to prevent a viewer from taking advantage of this monitoring and reporting system, the time of each authorizing and deauthorizing is noted and stored in memory, whereby each viewing segment between successive authorizations and deauthorizations may be calculated and stored in a total viewing time memory. Each viewer is also given a credit limit illustratively as the number of pay per view TV programs that will be authorized before further authorizing is defeated and it is necessary to update that credit limit. The remote terminal at call-in time transmits a report message to the host computer, which checks the viewer's credit and, if satisfactory, transmits or downloads a new credit limit to the remote terminal, thus permitting further authorizing of pay per view programs.

62 Claims, 15 Drawing Sheets





U16
Z80CPU

24

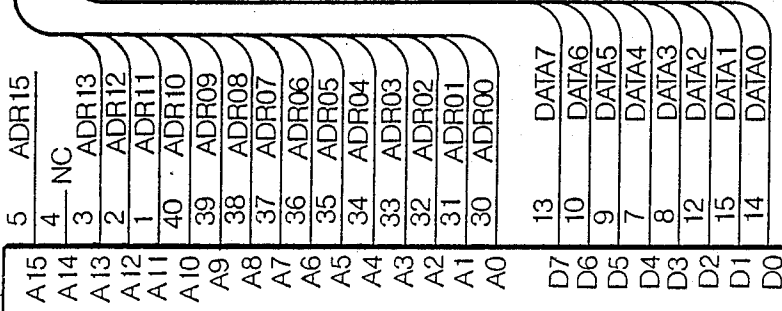
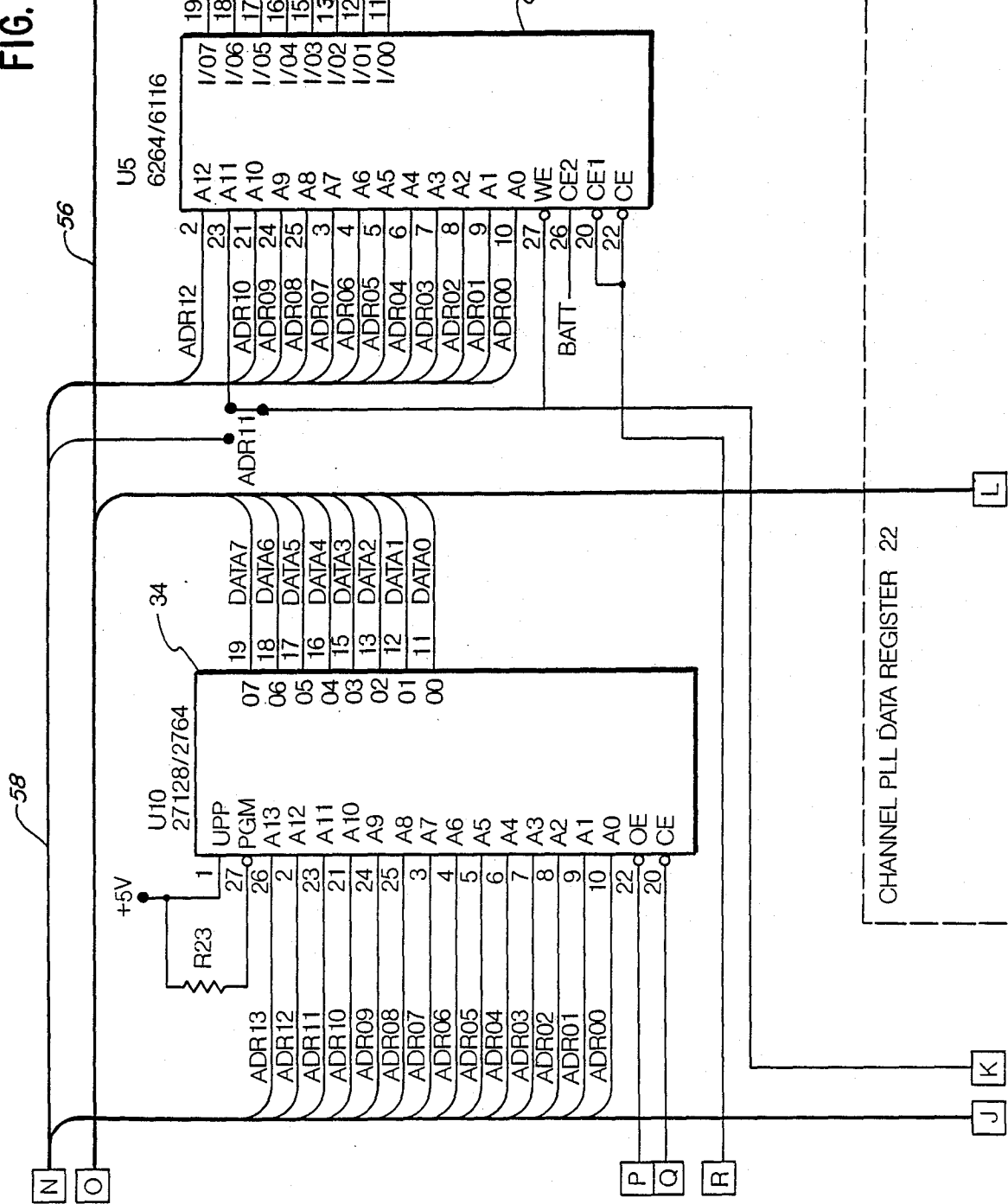


FIG. 2A-1	FIG. 2A-2
FIG. 2A-3	FIG. 2A-4

FIG. 2A

FIG. 2A-1

FIG.



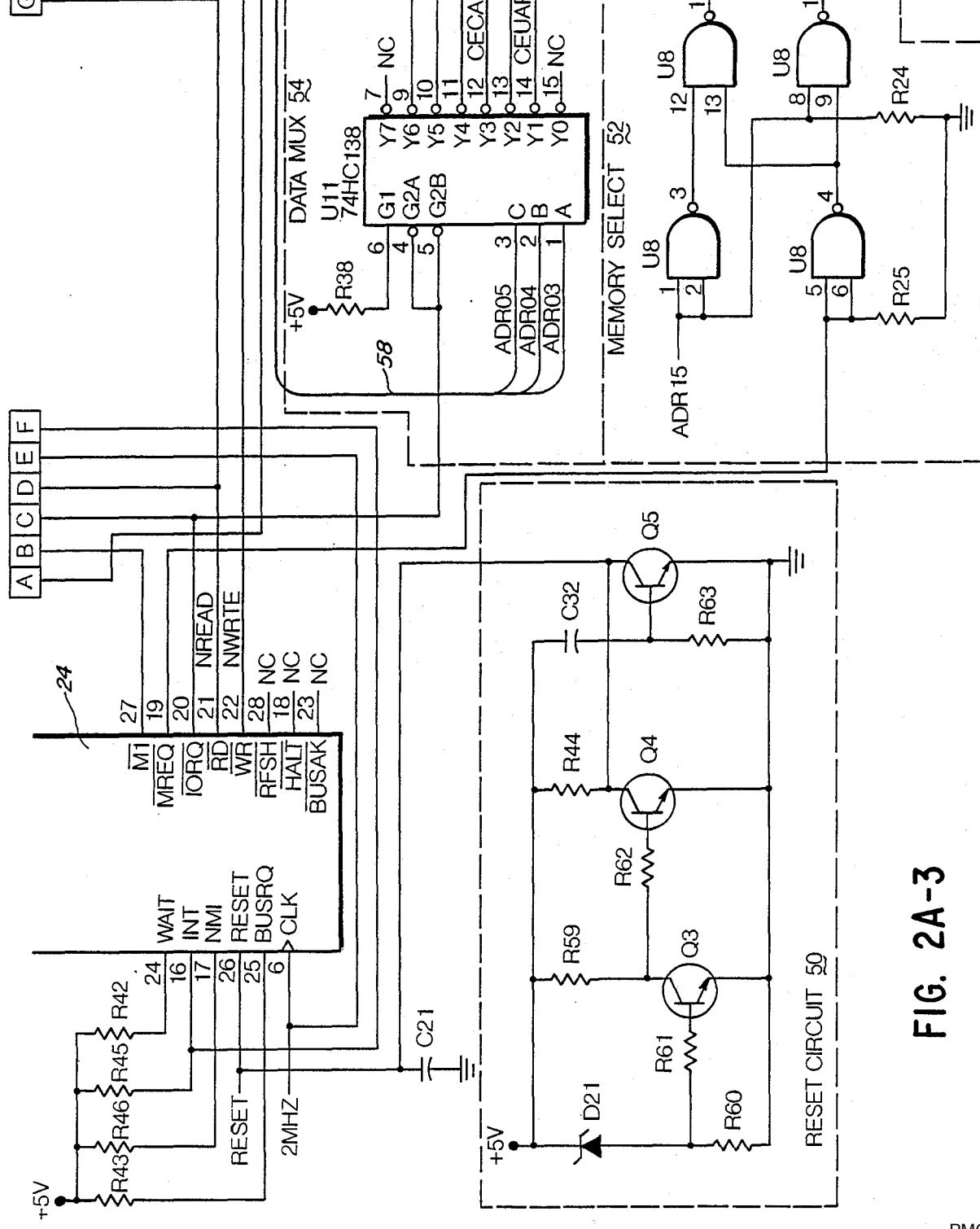


FIG. 2A-3

Explore Litigation Insights

Docket Alarm provides insights to develop a more informed litigation strategy and the peace of mind of knowing you're on top of things.

Real-Time Litigation Alerts



Keep your litigation team up-to-date with **real-time alerts** and advanced team management tools built for the enterprise, all while greatly reducing PACER spend.

Our comprehensive service means we can handle Federal, State, and Administrative courts across the country.

Advanced Docket Research



With over 230 million records, Docket Alarm's cloud-native docket research platform finds what other services can't. Coverage includes Federal, State, plus PTAB, TTAB, ITC and NLRB decisions, all in one place.

Identify arguments that have been successful in the past with full text, pinpoint searching. Link to case law cited within any court document via Fastcase.

Analytics At Your Fingertips



Learn what happened the last time a particular judge, opposing counsel or company faced cases similar to yours.

Advanced out-of-the-box PTAB and TTAB analytics are always at your fingertips.

API

Docket Alarm offers a powerful API (application programming interface) to developers that want to integrate case filings into their apps.

LAW FIRMS

Build custom dashboards for your attorneys and clients with live data direct from the court.

Automate many repetitive legal tasks like conflict checks, document management, and marketing.

FINANCIAL INSTITUTIONS

Litigation and bankruptcy checks for companies and debtors.

E-DISCOVERY AND LEGAL VENDORS

Sync your system to PACER to automate legal marketing.