

(12) **United States Patent**  
**Gilbert et al.**

(10) **Patent No.:** **US 6,490,247 B1**  
(45) **Date of Patent:** **\*Dec. 3, 2002**

(54) **RING-ORDERED DYNAMICALLY RECONFIGURABLE NETWORK USING AN EXISTING COMMUNICATIONS SYSTEM**

(75) Inventors: **Timothy G. Gilbert**, Vermillion, SD (US); **Istvan Fekete**, Dakota Dunes, SD (US); **Jeffrey Schindler**, Sioux City, IA (US)

(73) Assignee: **Gateway, Inc.**, Poway, CA (US)

(\*) Notice: This patent issued on a continued prosecution application filed under 37 CFR 1.53(d), and is subject to the twenty year patent term provisions of 35 U.S.C. 154(a)(2).

Subject to any disclaimer, the term of this patent is extended or adjusted under 35 U.S.C. 154(b) by 0 days.

(21) Appl. No.: **08/670,609**

(22) Filed: **Jun. 26, 1996**

(51) **Int. Cl.<sup>7</sup>** ..... **H04J 3/00**

(52) **U.S. Cl.** ..... **370/222; 370/224**

(58) **Field of Search** ..... 370/216, 217, 370/220, 222, 223, 224, 225, 227, 228, 408, 407, 406, 405, 404, 403, 402, 522, 431, 524, 537, 465, 468, 252, 254; 395/181; 340/827, 825.01, 825.03; 379/221

(56) **References Cited**

**U.S. PATENT DOCUMENTS**

|               |         |                       |           |
|---------------|---------|-----------------------|-----------|
| 4,663,748 A   | 5/1987  | Karbowiak et al. .... | 370/89    |
| 4,866,703 A   | 9/1989  | Black et al. ....     | 370/60    |
| 4,872,197 A   | 10/1989 | Pemmaraju ....        | 379/93    |
| 4,999,832 A   | 3/1991  | Black ....            | 370/85.14 |
| 5,003,531 A * | 3/1991  | Farinholt et al. .... | 370/223   |
| 5,041,963 A * | 8/1991  | Ebersole et al. ....  | 370/408   |
| 5,233,607 A   | 8/1993  | Barwigk et al. ....   | 370/94.1  |

|               |         |                       |           |
|---------------|---------|-----------------------|-----------|
| 5,323,388 A   | 6/1994  | Chang et al. ....     | 370/60    |
| 5,365,265 A   | 11/1994 | Shibata et al. ....   | 348/15    |
| 5,412,652 A * | 5/1995  | Lu ....               | 370/223   |
| 5,416,781 A   | 5/1995  | Ruiz ....             | 370/110.1 |
| 5,444,703 A   | 8/1995  | Gagliardi et al. .... | 370/60.1  |
| 5,459,720 A   | 10/1995 | Iliev et al. ....     | 370/60    |
| 5,463,623 A   | 10/1995 | Grimes et al. ....    | 370/79    |
| 5,517,489 A * | 5/1996  | Ogusa ....            | 370/223   |

**FOREIGN PATENT DOCUMENTS**

|    |         |         |
|----|---------|---------|
| EP | 0127138 | 12/1984 |
| FR | 2590384 | 5/1987  |

**OTHER PUBLICATIONS**

Marsden, P., "Interworking IEEE 802/FDDI LAN's via the ISDN frame relay bearer service", *Proceedings of the IEEE*, vol. 79, No. 2, pp. 223-229, (Feb. 1991).

\* cited by examiner

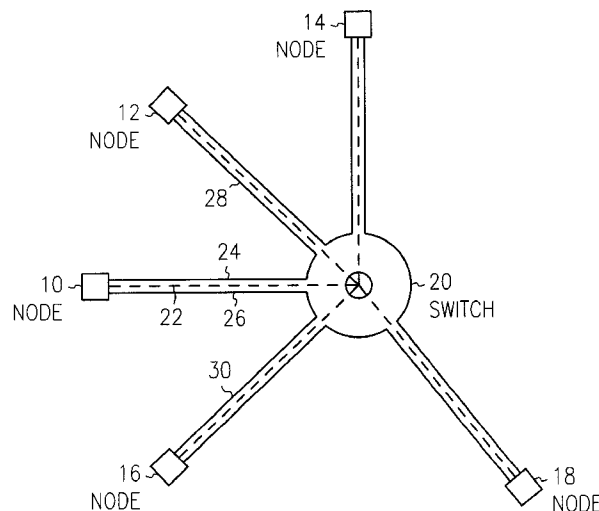
*Primary Examiner*—Dang Ton

(74) *Attorney, Agent, or Firm*—Scott Charles Richardson; John M. Dahl; Schwegman, Lundberg, Woessner & Kluth

(57) **ABSTRACT**

A ring-ordered dynamically reconfigurable computer network utilizing an existing communications system. The network comprises a plurality of nodes. Each node is coupled to the existing communications system by two data channels and a control channel. The network is established by each data channel of each node connecting operably to a data channel of another node. All the nodes are ordered in a ring. The control channel of each node is operably connected to the switch of the existing communications system. The network also comprises a network manager to establish the network, facilitate communication among the nodes, and dynamically reconfigure the network without disturbing communication among the nodes. Optionally, each node connects to the network only when it actually needs to communicate with another node.

**50 Claims, 5 Drawing Sheets**



**EXHIBIT**  
**Ex. 1028**

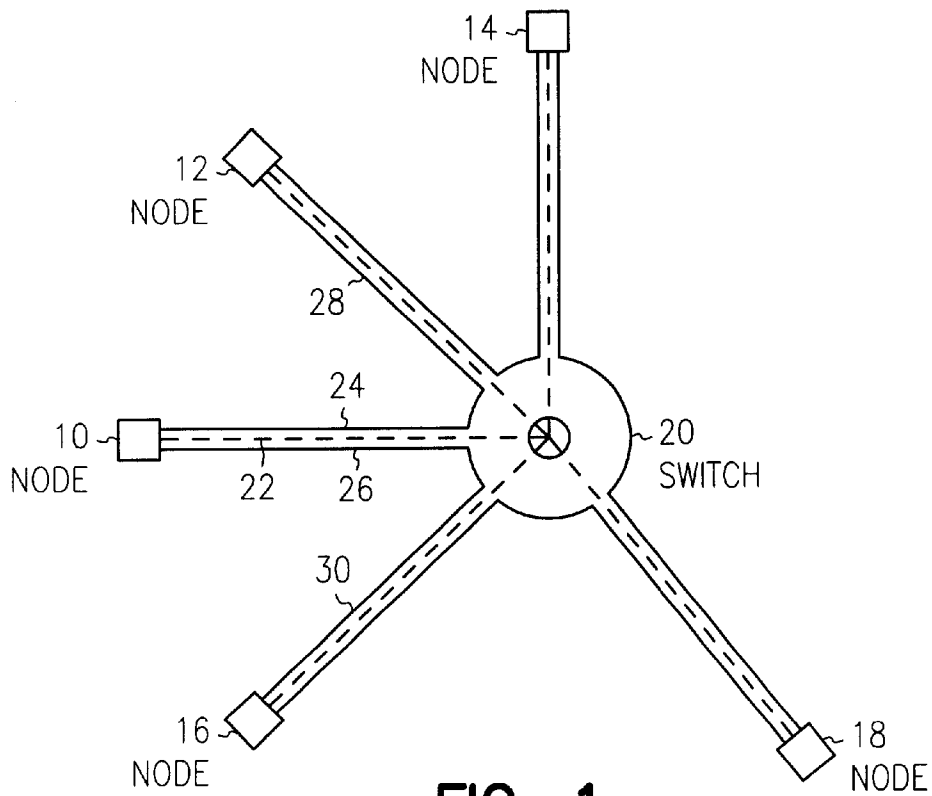


FIG. 1

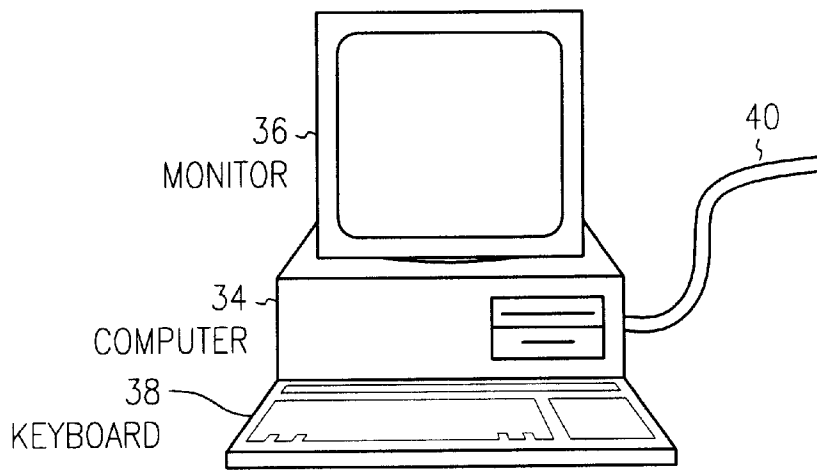


FIG. 2

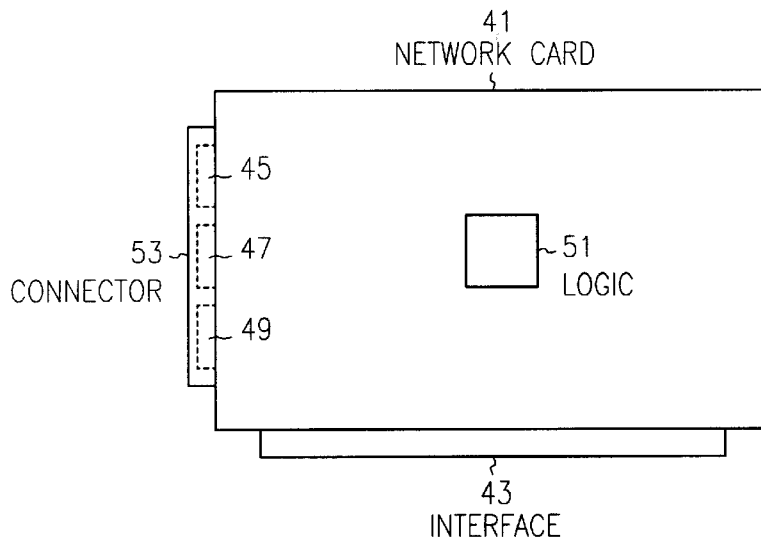


FIG. 3

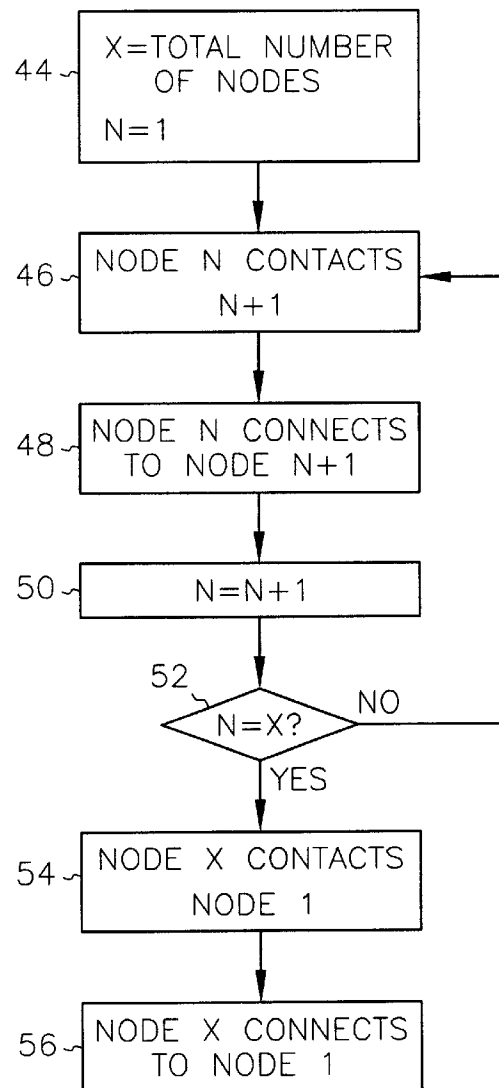


FIG. 4

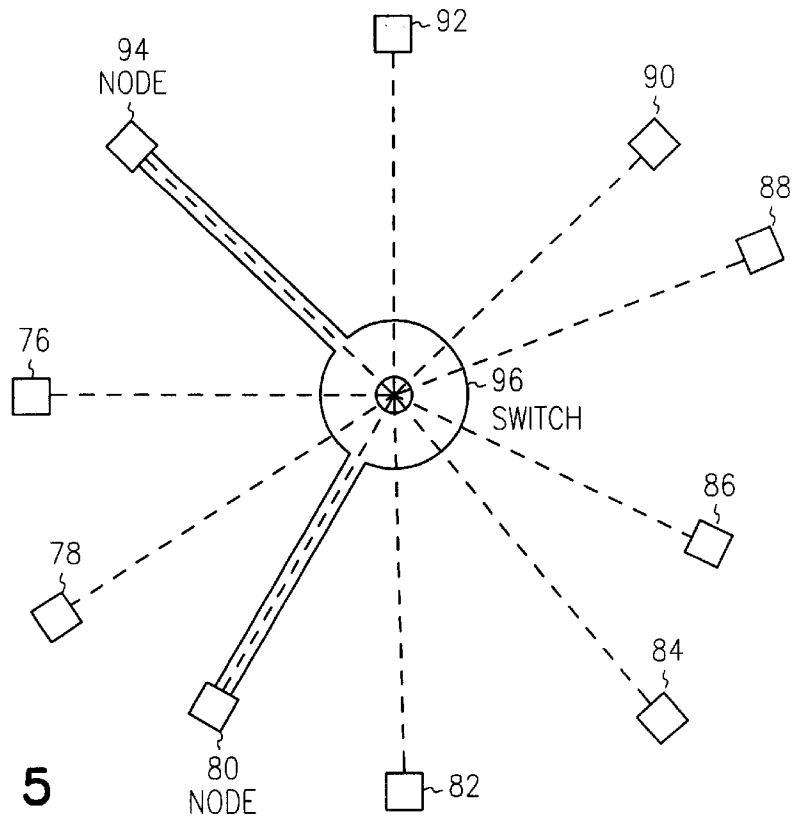


FIG. 5

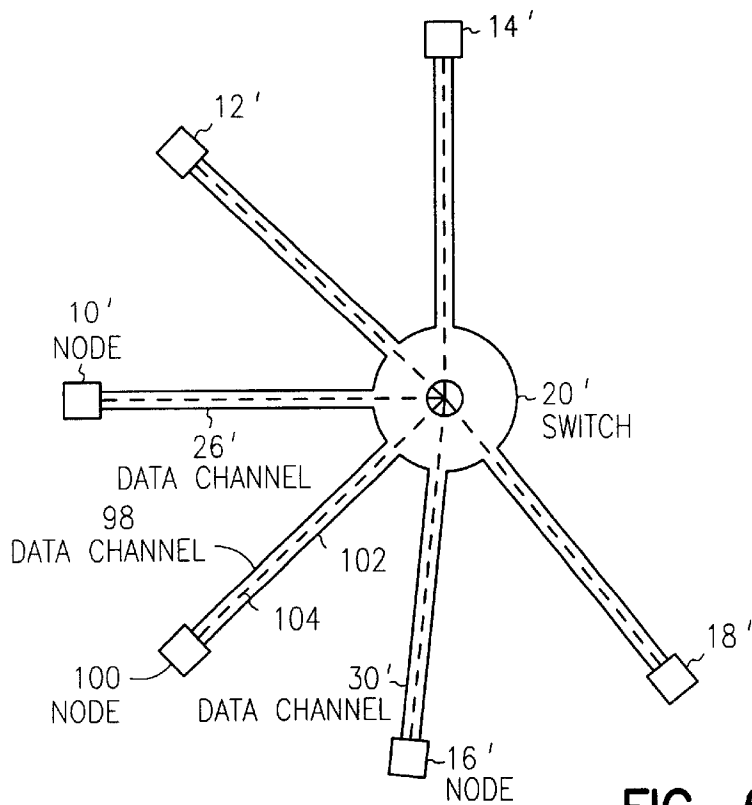


FIG. 6

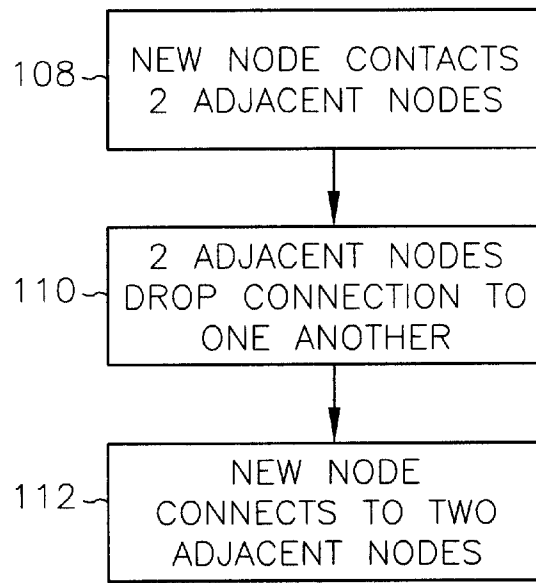


FIG. 7

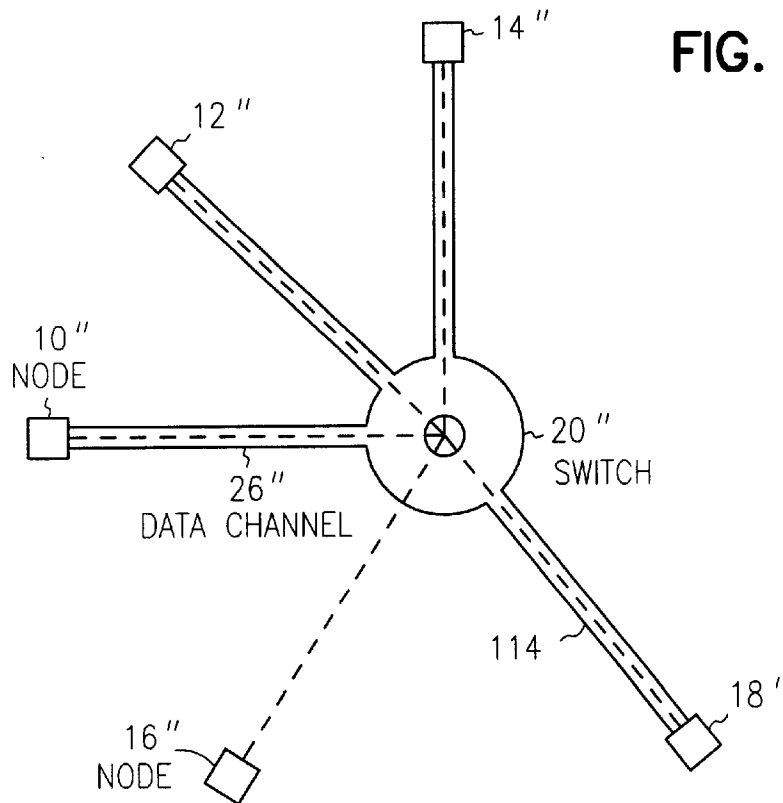


FIG. 8

# Explore Litigation Insights

Docket Alarm provides insights to develop a more informed litigation strategy and the peace of mind of knowing you're on top of things.

## Real-Time Litigation Alerts



Keep your litigation team up-to-date with **real-time alerts** and advanced team management tools built for the enterprise, all while greatly reducing PACER spend.

Our comprehensive service means we can handle Federal, State, and Administrative courts across the country.

## Advanced Docket Research



With over 230 million records, Docket Alarm's cloud-native docket research platform finds what other services can't. Coverage includes Federal, State, plus PTAB, TTAB, ITC and NLRB decisions, all in one place.

Identify arguments that have been successful in the past with full text, pinpoint searching. Link to case law cited within any court document via Fastcase.

## Analytics At Your Fingertips



Learn what happened the last time a particular judge, opposing counsel or company faced cases similar to yours.

Advanced out-of-the-box PTAB and TTAB analytics are always at your fingertips.

## API

Docket Alarm offers a powerful API (application programming interface) to developers that want to integrate case filings into their apps.

## LAW FIRMS

Build custom dashboards for your attorneys and clients with live data direct from the court.

Automate many repetitive legal tasks like conflict checks, document management, and marketing.

## FINANCIAL INSTITUTIONS

Litigation and bankruptcy checks for companies and debtors.

## E-DISCOVERY AND LEGAL VENDORS

Sync your system to PACER to automate legal marketing.