



[54] WIDE AREA NETWORK (WAN) INTERFACE FOR A TRANSMISSION CONTROL PROTOCOL/INTERNET PROTOCOL (TCP/IP) IN A LOCAL AREA NETWORK (LAN)

5,426,637 6/1995 Derby et al. 370/401

FOREIGN PATENT DOCUMENTS

A465201 1/1992 European Pat. Off. .

OTHER PUBLICATIONS

"Architecture and Design of an Open Systems LAN/WAN Gateway" Johansen et al, IEEE, 1988, pp. 112-119.

"Performance Analysis of a LAN/WAN Bridging Architecture" Rodrigues et al, IEEE, 1989, pp. 0646-0650.

"Some Experience with LAN Interconnection via Frame Relaying" Lamont et al, IEEE, 1989, pp. 21-24.

Examiner's Search Report re GB 9311059.1 (1 p.) Aug. 18, 1993 United Kingdom.

IBM Technical Disclosure Bulletin, vol.36, No. 06B, pp. 61-67, Jun. 1993.

Proc. IEEE, vol. 79, No.2, Inspec. Abstract B 91033950 (1 pg.) Feb. 1991 U.S.A.

Primary Examiner—Parshotam S. Lall

Assistant Examiner—Viet Vu

Attorney, Agent, or Firm—Fitch, Even, Tabin & Flannery

[75] Inventor: Seppo Hirviniemi, Helsinki, Finland

[73] Assignee: ICL Personal Systems Oy, Helsinki, Finland

[21] Appl. No.: 948,602

[22] Filed: Oct. 10, 1997

Related U.S. Application Data

[63] Continuation of Ser. No. 689,240, Aug. 6, 1996, abandoned, which is a continuation of Ser. No. 375,176, Jan. 18, 1996, abandoned, which is a continuation of Ser. No. 67,579, May 28, 1993, abandoned.

[30] Foreign Application Priority Data

May 29, 1992 [FI] Finland 922484

[51] Int. Cl.⁶ G06F 13/00

[52] U.S. Cl. 395/200.8; 395/200.6; 370/401

[58] Field of Search 395/200.47, 200.48, 395/200.49, 200.6, 200.62, 200.8, 680, 681, 682, 500; 370/401, 469, 903, 911

[56] References Cited

U.S. PATENT DOCUMENTS

- 4,901,312 2/1990 Hui et al. 370/403
5,021,949 6/1991 Morten et al. 345/200.61
5,159,592 10/1992 Perkins 370/338
5,179,554 1/1993 Lomicka et al. 370/257
5,251,205 10/1993 Callon et al. 370/392
5,251,213 10/1993 Vidlock et al. 370/403
5,309,437 5/1994 Pedman et al. 370/401

[57] ABSTRACT

The invention relates to a method for interfacing a transmission control protocol/internet protocol (TCP/IP) area network (LAN) to a wide area network via a MAC manager. The TCP/IP software uses a lower-level address resolution protocol (ARP) protocol to find physical network addresses corresponding to logical internet protocol (IP) addresses, and a lower-level IP protocol to transfer useful traffic in IP data packets. In the invention, the media access control (MAC) manager of the wide area network (3) simulates operation complying with the ARP protocol towards the TCP/IP software, and transmits and receives only IP data packets over the wide area network (3) in a manner specific to the wide area network.

6 Claims, 4 Drawing Sheets

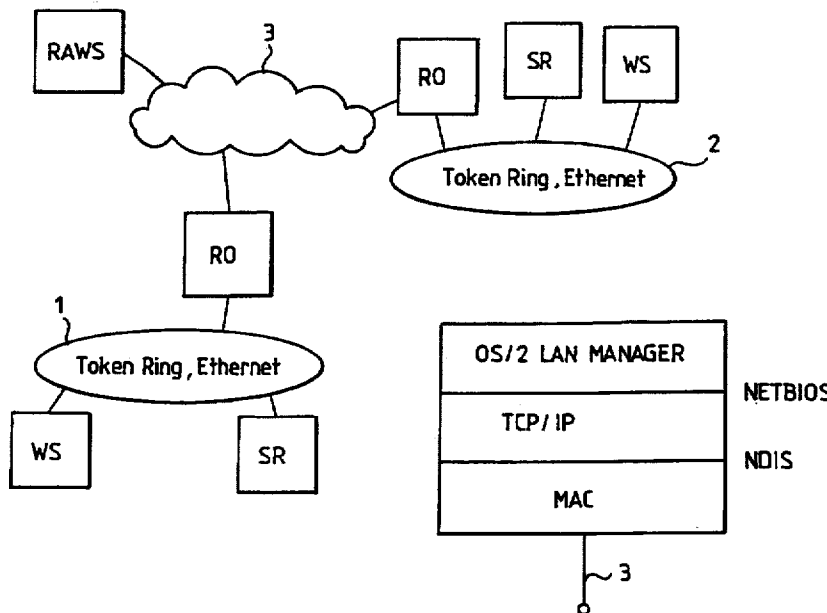


EXHIBIT Ex. 1021

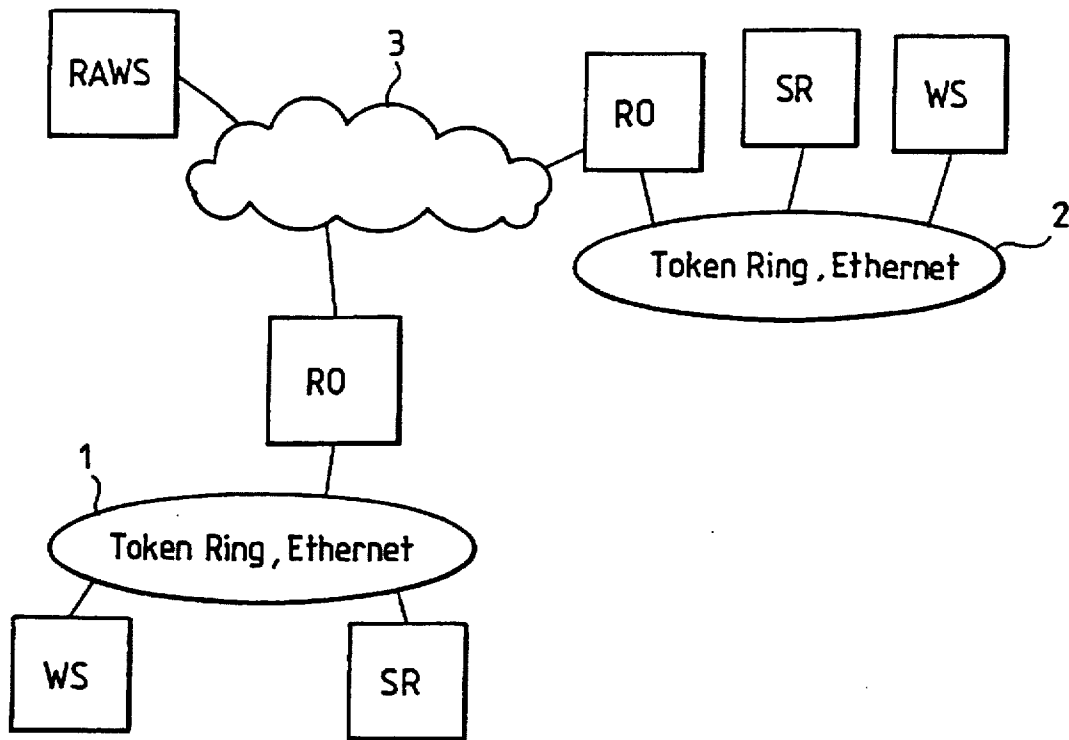


FIG. 1

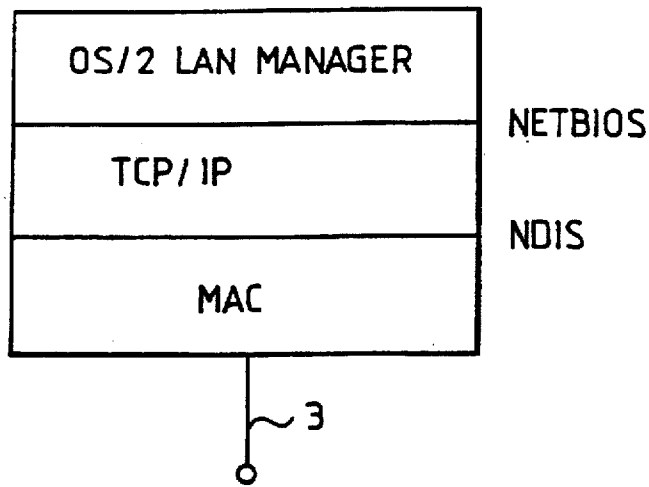


FIG. 2

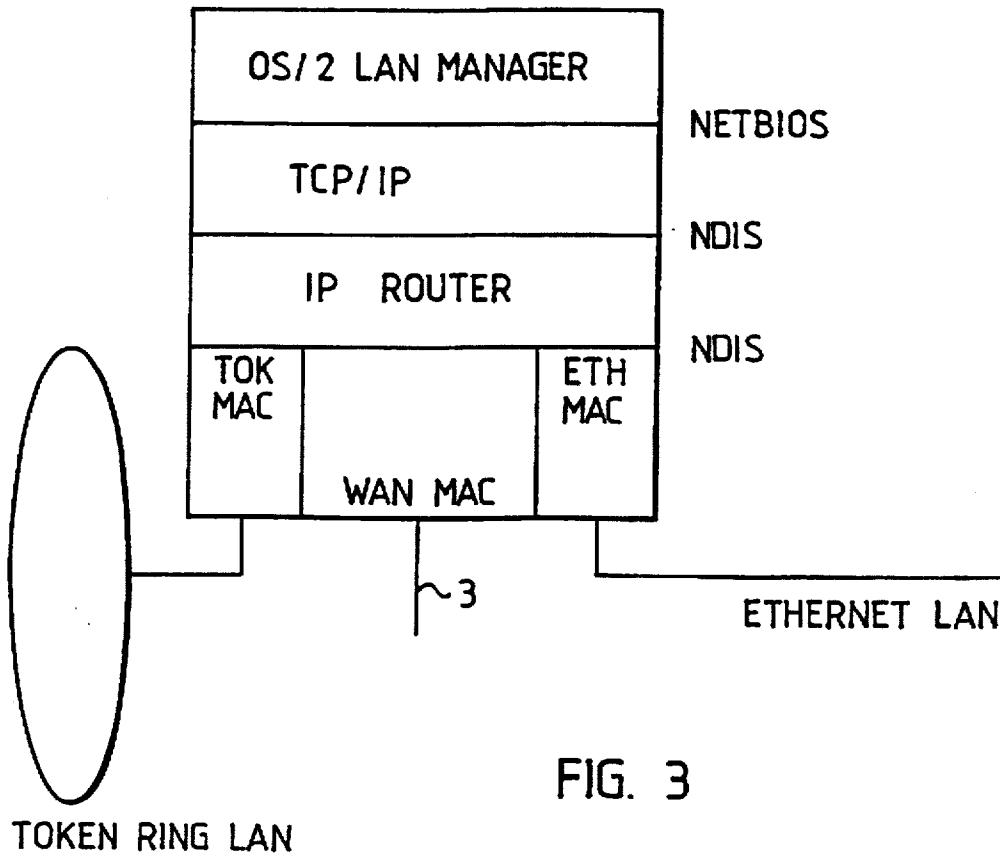
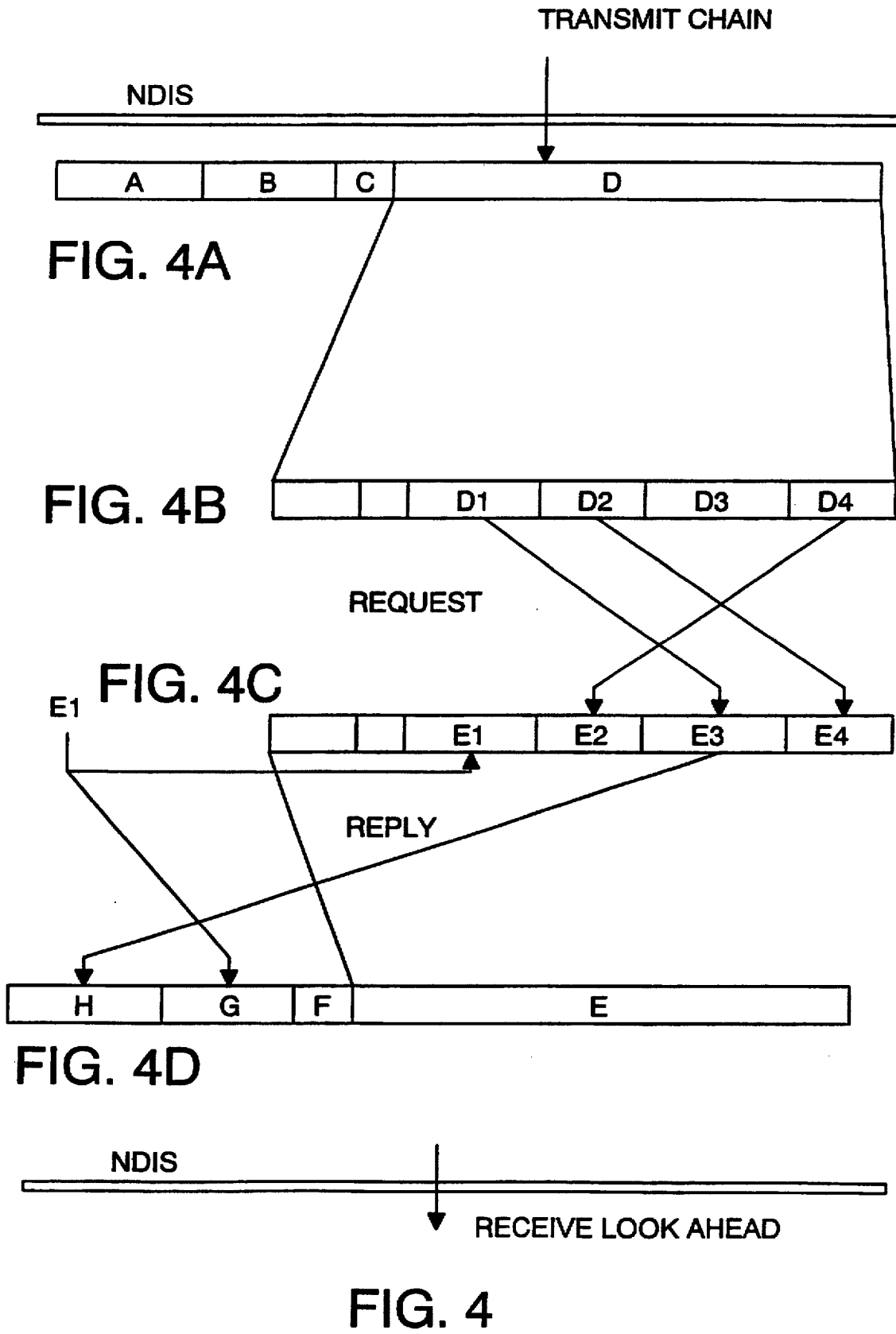


FIG. 3

TOKEN RING LAN



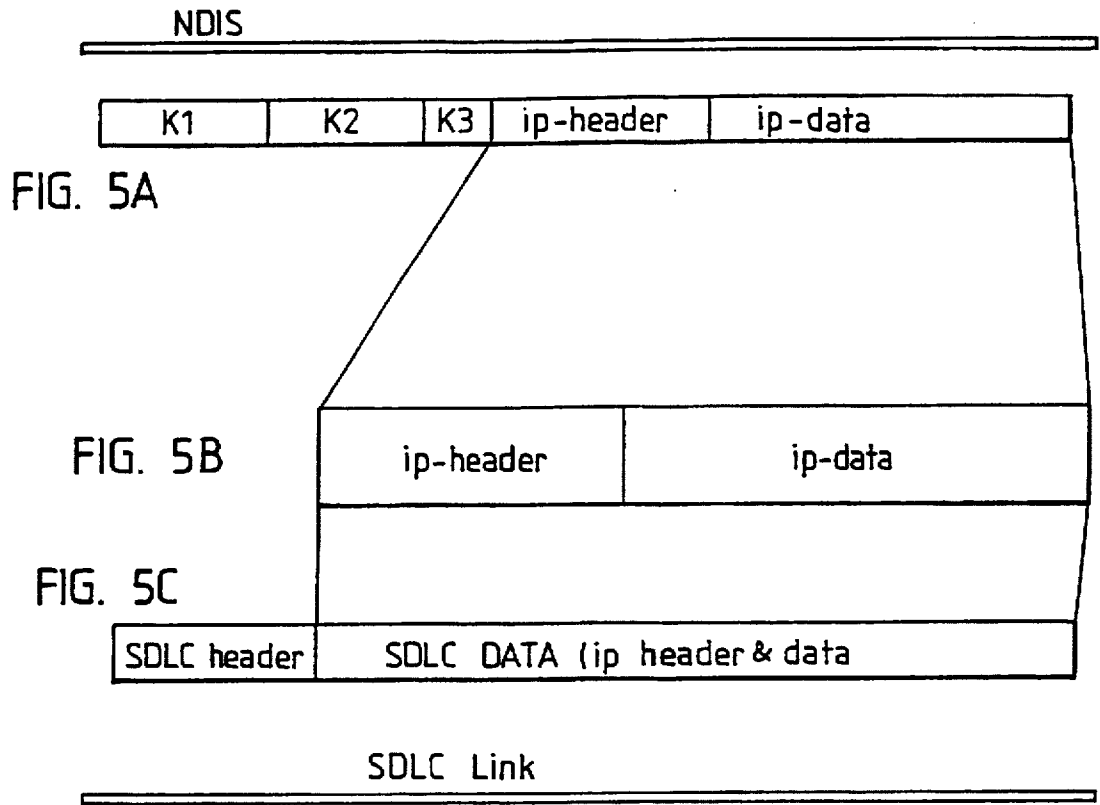


FIG. 5

Explore Litigation Insights

Docket Alarm provides insights to develop a more informed litigation strategy and the peace of mind of knowing you're on top of things.

Real-Time Litigation Alerts



Keep your litigation team up-to-date with **real-time alerts** and advanced team management tools built for the enterprise, all while greatly reducing PACER spend.

Our comprehensive service means we can handle Federal, State, and Administrative courts across the country.

Advanced Docket Research



With over 230 million records, Docket Alarm's cloud-native docket research platform finds what other services can't. Coverage includes Federal, State, plus PTAB, TTAB, ITC and NLRB decisions, all in one place.

Identify arguments that have been successful in the past with full text, pinpoint searching. Link to case law cited within any court document via Fastcase.

Analytics At Your Fingertips



Learn what happened the last time a particular judge, opposing counsel or company faced cases similar to yours.

Advanced out-of-the-box PTAB and TTAB analytics are always at your fingertips.

API

Docket Alarm offers a powerful API (application programming interface) to developers that want to integrate case filings into their apps.

LAW FIRMS

Build custom dashboards for your attorneys and clients with live data direct from the court.

Automate many repetitive legal tasks like conflict checks, document management, and marketing.

FINANCIAL INSTITUTIONS

Litigation and bankruptcy checks for companies and debtors.

E-DISCOVERY AND LEGAL VENDORS

Sync your system to PACER to automate legal marketing.