



US007593991B2

(12) **United States Patent**  
**Friedman et al.**

(10) **Patent No.:** **US 7,593,991 B2**  
(45) **Date of Patent:** **Sep. 22, 2009**

(54) **SYSTEMS AND METHODS FOR  
PROCESSING ATTACHMENTS ASSOCIATED  
WITH ELECTRONIC MESSAGES**

(75) Inventors: **Lee G. Friedman**, Alpharetta, GA (US);  
**Shayne Bowman**, Cumming, GA (US)

(73) Assignee: **AT&T Intellectual Property I, L.P.**,  
Reno, NV (US)

(\*) Notice: Subject to any disclaimer, the term of this  
patent is extended or adjusted under 35  
U.S.C. 154(b) by 770 days.

(21) Appl. No.: **10/911,870**

(22) Filed: **Aug. 5, 2004**

(65) **Prior Publication Data**

US 2006/0031336 A1 Feb. 9, 2006

(51) **Int. Cl.**  
**G06F 15/16** (2006.01)

(52) **U.S. Cl.** ..... **709/206; 715/717**

(58) **Field of Classification Search** ..... 709/201,  
709/203, 206, 232, 245, 205; 707/1, 102,  
707/104.1; 715/500, 717; 348/207.2; 379/67.1,  
379/88.14; 713/168; 370/282  
See application file for complete search history.

(56) **References Cited**

U.S. PATENT DOCUMENTS

5,771,355 A \* 6/1998 Kuzma ..... 709/232

6,182,080	B1 *	1/2001	Clements	707/102
6,360,252	B1 *	3/2002	Rudy et al.	709/206
6,411,685	B1 *	6/2002	O'Neal	379/88.14
6,549,612	B2 *	4/2003	Gifford et al.	379/67.1
6,564,321	B2 *	5/2003	Bobo, II	713/168
6,721,286	B1 *	4/2004	Williams et al.	370/282
6,784,899	B1 *	8/2004	Barrus et al.	715/717
6,993,594	B2 *	1/2006	Schneider	709/245
7,080,099	B2 *	7/2006	Tada et al.	707/104.1
7,130,885	B2 *	10/2006	Chandra et al.	709/206
2003/0055905	A1 *	3/2003	Nishiyama et al.	709/206
2003/0097408	A1 *	5/2003	Kageyama et al.	709/205
2003/0140090	A1 *	7/2003	Rezvani et al.	709/203
2004/0070673	A1 *	4/2004	Nakamura	348/207.2
2004/0215696	A1 *	10/2004	Fisher et al.	709/201
2006/0010095	A1 *	1/2006	Wolff et al.	707/1
2006/0224937	A1 *	10/2006	Sudoh et al.	715/500

\* cited by examiner

*Primary Examiner*—Dustin Nguyen

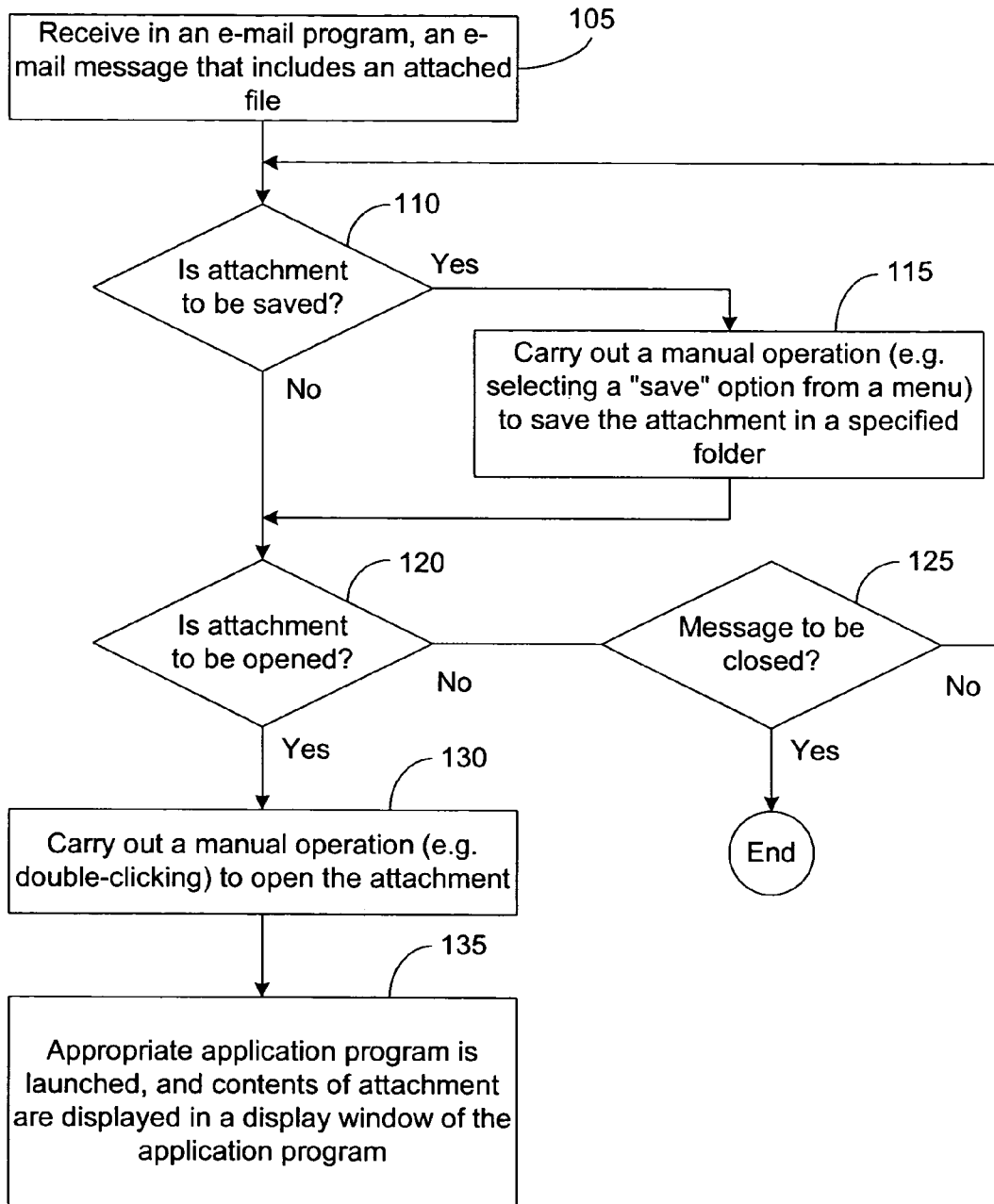
(74) *Attorney, Agent, or Firm*—Thomas, Kayden,  
Horstemeyer & Risley, LLP

(57) **ABSTRACT**

Attachments that are received through one or more message transport services are processed. An object identifier is received through an electronic message received through one of a plurality of message transport services. A thumbnail graphic of a portion of the contents of the object associated with the object identifier is generated and displayed in a display window.

**20 Claims, 6 Drawing Sheets**





**FIG. 1**  
**(Prior Art)**

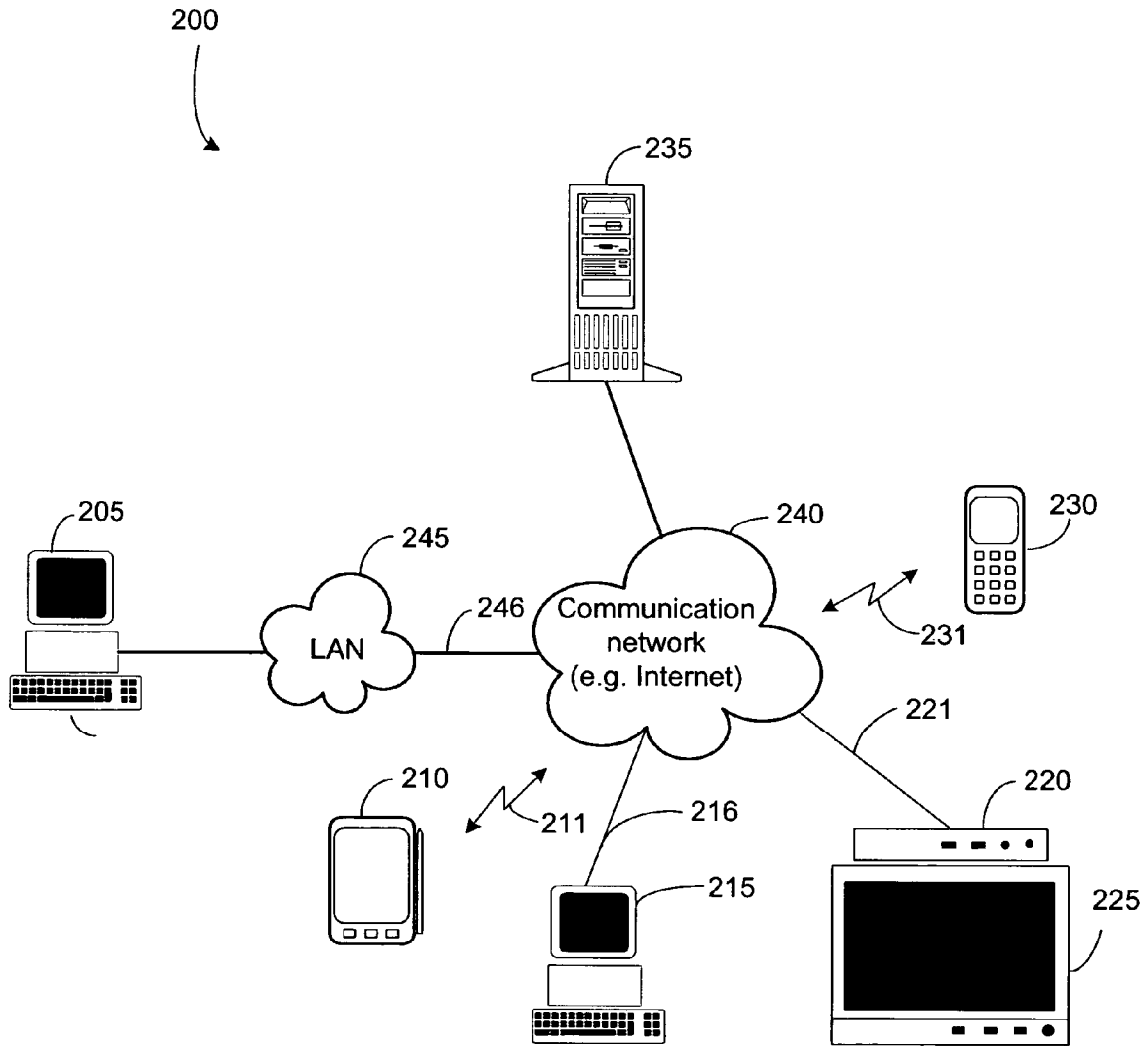


FIG. 2

440  
↙

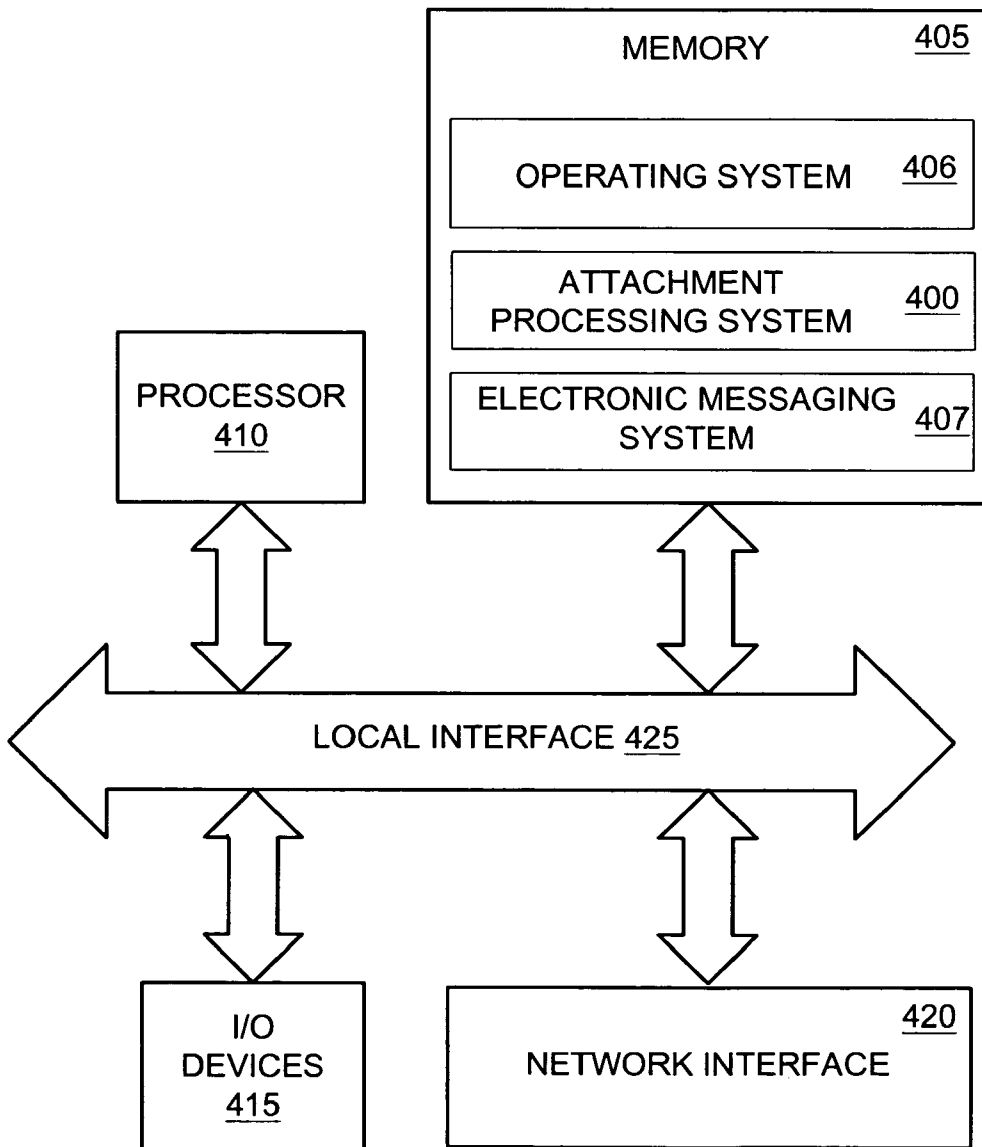


FIG. 3

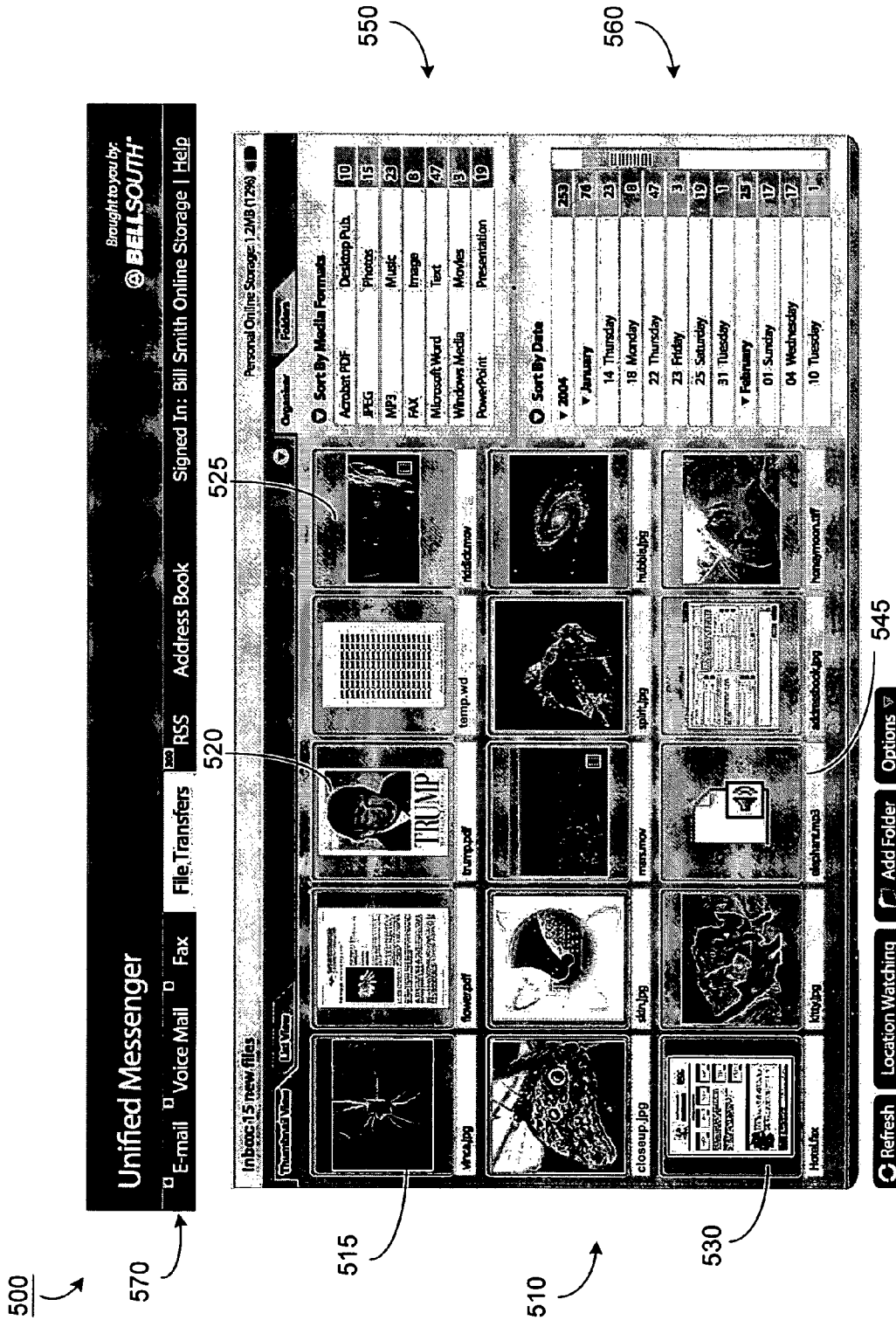


FIG. 4

# Explore Litigation Insights

Docket Alarm provides insights to develop a more informed litigation strategy and the peace of mind of knowing you're on top of things.

## Real-Time Litigation Alerts



Keep your litigation team up-to-date with **real-time alerts** and advanced team management tools built for the enterprise, all while greatly reducing PACER spend.

Our comprehensive service means we can handle Federal, State, and Administrative courts across the country.

## Advanced Docket Research



With over 230 million records, Docket Alarm's cloud-native docket research platform finds what other services can't. Coverage includes Federal, State, plus PTAB, TTAB, ITC and NLRB decisions, all in one place.

Identify arguments that have been successful in the past with full text, pinpoint searching. Link to case law cited within any court document via Fastcase.

## Analytics At Your Fingertips



Learn what happened the last time a particular judge, opposing counsel or company faced cases similar to yours.

Advanced out-of-the-box PTAB and TTAB analytics are always at your fingertips.

## API

Docket Alarm offers a powerful API (application programming interface) to developers that want to integrate case filings into their apps.

## LAW FIRMS

Build custom dashboards for your attorneys and clients with live data direct from the court.

Automate many repetitive legal tasks like conflict checks, document management, and marketing.

## FINANCIAL INSTITUTIONS

Litigation and bankruptcy checks for companies and debtors.

## E-DISCOVERY AND LEGAL VENDORS

Sync your system to PACER to automate legal marketing.