

# Quasiresonant laser-produced plasma: An efficient mechanism for localized breakdown

A. C. Tam

IBM Research Laboratory, San Jose, California 95193

(Received 19 February 1980; accepted for publication 27 May 1980)

This paper deals semiquantitatively with the phenomenon of quasiresonant laser-produced plasma (QRLPP) generation, i.e., breakdown of an atomic vapor when a laser beam couples a resonant excited state with a high excited state. The origin of the breakdown, threshold conditions for the breakdown, and the effect of inducible absorption are discussed. Furthermore, the QRLPP may exhibit an unusual asymmetrical behavior (observed for a Cs plasma) when the single mode cw dye laser is tuned near the quasiresonant absorption line: on the low-frequency wing, "noise-reduction" effect for the transmitted beam is observed, while on the high-frequency wing, "self-oscillation" of the plasma is observed. The self-oscillation seems to result from a periodic plasma diffusion from the laser focus. The QRLPP, produced by cw or pulsed lasers, is a very efficient plasma generation mechanism which appears to be useful for many atomic vapors, and the potential applications are discussed.

PACS numbers: 52.50.Jm, 42.60.He

## I. INTRODUCTION

Laser-induced gas breakdown has been extensively studied ever since high-intensity pulsed lasers have been developed. In applied science, the laser-plasma mechanism is important in various studies like laser fusion,<sup>1</sup> energy conversion,<sup>2,3</sup> optical switching,<sup>4</sup> and others; while in pure science, laser breakdown is involved in studies like ion spectroscopy<sup>5</sup> or afterglow kinetics.<sup>6</sup> Most of the earlier laser-plasma productions<sup>7-10</sup> utilized multiphoton excitation and inverse bremsstrahlung to couple the light energy into the electron kinetic energy. Measures,<sup>11</sup> and Yamada and Okuda<sup>12</sup> first recognized that resonant optical excitation of a vapor system [Fig. 1(a)] is a highly efficient method of producing ionization in the vapor; Lucatorto and McIlrath<sup>13</sup> first demonstrated the efficient resonant laser-produced plasma (RLPP) mechanism by totally ionizing a Na vapor by a pulsed dye laser tuned to the resonant Na transition at 5896 Å. Since then, further experimental evidence<sup>14</sup> of efficient resonant laser-plasma generation and extensive computer modeling<sup>15,16</sup> of this mechanism has been reported.

The phenomenon of RLPP has been observed<sup>5,13</sup> only for atomic systems of densities exceeding  $10^{16} \text{ cm}^{-3}$ . In these dense vapor systems, rapid collisions of the resonant excited atoms (produced from the ground state by the laser beam) with electrons provide an efficient means of conversion of the laser energy into the plasma energy. However, in a dense vapor system, another less well-known method for efficient laser-plasma generation is possible, which I shall call the quasiresonant laser-produced plasma (QRLPP) mechanism. In this method [Fig. 1(b)], the dense vapor is irradiated by a quasiresonant laser beam, which couples a resonant excited state (i.e., a state with strong dipole transition moment with the ground state) and a higher excited state. At low enough incident laser intensity  $I$  and low enough atomic density  $N$ , the laser should be nearly unabsorbed by the vapor, since the thermal population of the resonant excited state is very small (the energy interval between the resonant

excited state and the ground state is much larger than the thermal energy). In QRLPP, a quasiresonant laser beam of sufficiently high  $I$  can turn (as explained below) the normally transparent vapor opaque and produce a plasma. Tam and Happer<sup>17</sup> first demonstrated that this is possible in an alkali metal vapor even for a weak cw laser beam (of power  $\sim 0.1 \text{ W}$ ) being used, if it is focused. The plasma is localized near the laser focus. This clearly shows the high efficiency of the QRLPP mechanism, because even low-power cw laser beams can be used.

Although both the QRLPP method and the RLPP method are very efficient mechanisms to convert photon energy into plasma energy, there is an important difference between the two methods: The quasiresonant laser is not absorbed except where the plasma is located; so an isolated

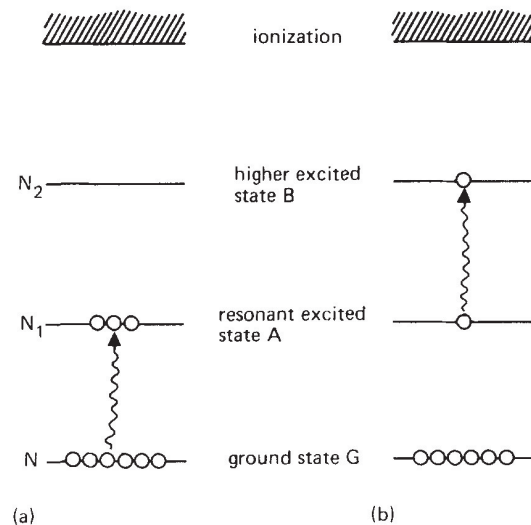


FIG. 1. Schematic of efficient laser production of plasma (a) by resonant excitation (RLPP), and (b) by quasiresonant excitation (QRLPP).

and highly localized plasma spark near the laser focus can be produced. On the other hand, the resonant laser is strongly absorbed by the unionized vapor, so that the plasma always extends from the incident window towards the interior of the vapor cell. Hence, when a localized "point source" of intense ionization is desired, the quasiresonant case is preferred. Such localized sources may find important applications in ion spectroscopy, energy conversion studies, plasma wave studies, or for providing ion beams for ion-beam microscopy, ion-beam lithography, or surface etching.

The QRLPP mechanism should be an important general method to produce localized plasmas in various atomic systems, and further experimental and theoretical understanding of the mechanism is desirable. I have<sup>18</sup> reported on the dynamic response of a QRLPP due to modulations of the laser beam, and the experimental observation<sup>18</sup> of a reduction in the laser beam modulation after transmission through the plasma provides semiquantitative support for a rate equation analysis to explain the plasma formation. Details of this analysis and of the QRLPP generation observed in a Cs vapor are reported in this paper.

## II. THRESHOLD CONDITIONS

The QRLPP mechanism for an atomic vapor can be explained in the block diagram shown in Fig. 2. The laser is *not* absorbed by the ground-state atoms. However, through molecular absorption or collision-induced absorptions, a few atoms in the resonant excited state are produced by the laser light. These resonant excited atoms *do* strongly absorb the laser. At sufficiently large  $I$  and large  $N$ , a self-propagating cyclic reaction, initiated from the atoms in the resonant excited state can be produced, and this can cause most of the laser energy to be deposited in the medium and produce ionization. Threshold conditions in  $N$  and  $I$  must be satisfied for the cycle in Fig. 2 to become runaway.

Collisions for the production and heating of electrons are crucial for the generation and the maintenance of the QRLPP. The threshold conditions for the plasma production can be semiquantitatively understood as follows. At low atomic density  $N$ , the optically excited atom  $B$  decays mainly by radiative decay, with a lifetime  $\tau_2^{\text{rad}}$ . If  $N$  is gradually in-

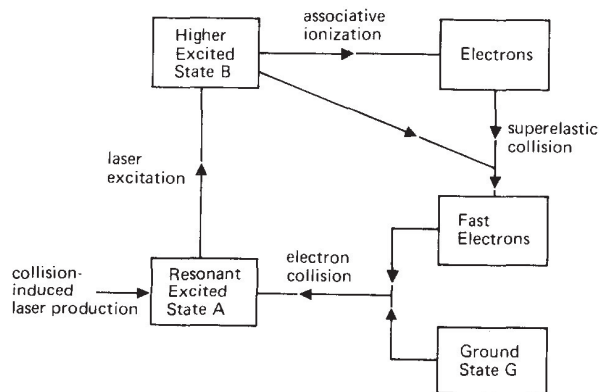
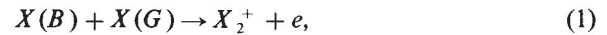


FIG. 2. Positive feedback cycle causing breakdown by quasiresonant laser excitation at sufficiently high atomic density and laser power.

creased, collisional excitation transfer becomes more and more important; in particular, associative ionization,<sup>19,20</sup>



becomes an important mechanism to produce electrons. Here,  $X(B)$  and  $X(G)$  are atoms of the element  $X$  in the  $B$  and  $G$  states, respectively. Equation (1) is energetically possible only if the  $B$  state is high enough in energy, i.e.,

$$\text{Ionization Energy of } B \text{ State} < \text{Binding Energy of } X_2^+. \quad (2)$$

For example, for the cases of the alkali atoms, binding energy of the molecular ion is  $\sim 1$  eV.

In addition, to effectively produce ionization, the associative ionization collision rate must be sufficiently fast, i.e.,

$$N\alpha_{ai}\tau_2^{\text{rad}} \gtrsim 1, \quad (3)$$

where  $\alpha_{ai}$  is the associative ionization coefficient for the  $B$  state and  $\tau_2^{\text{rad}}$  is the radiative decay rate of the  $B$  state. As an example, in the Cs case with state  $B$  being the  $8D_{3/2}$  excited state,  $\alpha_{ai} \sim 10^{-10} \text{ cm}^3 \text{ sec}^{-1}$ ,<sup>19</sup> and  $\tau_2^{\text{rad}} \sim 10^{-7} \text{ sec}$ ; hence Eq. (3) corresponds to a threshold condition of

$$N \gtrsim 10^{17} \text{ cm}^{-3}, \quad (4)$$

which is close to the typical threshold density for plasma production observed.<sup>17</sup>

The kinetic energy of the electron produced in Eq. (1) is typically much smaller than 1 eV, since it is equal to the difference of the binding energy of the molecular ion and the ionization energy of the  $B$  state. In order to cause efficient plasma production, an electron-heating mechanism is needed. This is possible when the laser intensity is high enough such that superelastic collisions of an electron with an  $X(B)$  atom becomes highly probable, i.e.,

$$N_2 V_e \sigma_{e2} \tau_e \gtrsim 1, \quad (5)$$

where  $N_2$  is the density of excited  $B$  state atoms,  $V_e$  is the electron velocity,  $\sigma_{e2}$  is the average superelastic collision cross section of an electron with the  $B$  state, and  $\tau_e$  is the electron lifetime (recombination or diffusion limited). The threshold condition (5) states that a sufficiently high laser intensity  $I$  is needed to produce sufficiently large  $N_2$  to produce the plasma; however, Eq. (5) is not very useful as it is, since it involves the density  $N_2$  (before plasma formation), which depends on the detailed production and destruction channels for the excited states before the plasma is produced. However, if the dependence of  $N_2$  on  $I$  and  $N$  is known, then Eq. (5) provides an estimate of the threshold laser intensity  $I$ . For example, for the case of a Cs vapor excited by the 6010 Å laser,<sup>17</sup> we have

$$N_2 \approx N_1 \quad (6)$$

(i.e., the excitation  $A \rightarrow B$  is saturated by the laser) under our typical experimental conditions. Now, before the plasma is formed, atoms in the  $A$  state are produced by the laser excitation of  $\text{Cs}_2$  dimers. An order of magnitude estimate shows that the production rate of  $A$  atoms is  $\sim 10^{-18} IN^2$ , where  $I$  is the laser intensity in  $\text{W cm}^{-2}$ , and  $N$  is the ground-state atomic density in  $\text{cm}^{-3}$  (the  $\text{Cs}_2$  density varies as  $N^2$  approximately). We may assume that the decay rate of the  $A$

state is the radiative decay rate (modified by radiation trapping) of  $\sim 10^7 \text{ sec}^{-1}$ . Equating the production and decay rates for the  $A$  state, we have

$$N_1 \sim 10^{-25} IN^2. \quad (7)$$

Combining Eqs. (5)–(7), and assuming  $V_e \sim 10^7 \text{ cm sec}^{-1}$ ,  $\sigma_{e2} \sim 10^{-14} \text{ cm}^2$  and  $\tau_e \sim 10^{-6} \text{ sec}$  (ambipolar-diffusion limited), we have the threshold condition being

$$10^{-38} IN^2 \gtrsim 1 \quad (8)$$

or

$$I \gtrsim 10^4 \text{ W cm}^{-2}, \quad (9)$$

if we put  $N \sim 10^{17} \text{ cm}^{-3}$ . This is close to the experimentally observed laser threshold, being  $\sim 0.1 \text{ W}$  intensity focused to an area  $\sim 10^{-5} \text{ cm}^2$ . Note that the threshold laser intensity in Eq. (9) is some ten orders of magnitude lower than the conventional laser breakdown threshold due to multiphoton ionization and inverse bremsstrahlung.

Although Eqs. (4) and (9) are specifically for the Cs vapor, these values for the threshold density and laser intensity are expected to be typical for other vapors (alkali, alkali-earth, etc.), if the quiresonant laser excitation is a strongly dipole-allowed line producing a sufficiently high excited state (whose ionization energy is less than the binding energy of the molecular ion).

### III. KINETICS IN THE PLASMA; INDUCIBLE ATTENUATION

The previous section discusses the plasma threshold condition: at sufficiently high  $N$  and  $I$ , the optical excitation of an  $A$  atom will produce (through collisions involving electrons) an  $A$  atom again, and hence the cycle in Fig. 2 becomes runaway. After the laser plasma is produced, a large  $N_1$  density is maintained by electron collisions, corresponding to the Boltzman distribution with an electron temperature  $T_e$ . Hence the laser is strongly attenuated by the plasma spark, and absorption is typically  $\gtrsim 50\%$ . It should be noted that the QRLPP is an inducible absorber, i.e., the percentage laser absorption quickly increases as laser power increases. This is in contrast to the more common case of bleachable absorption, when percentage absorption decreases with increasing laser power owing to saturation, optical pumping,

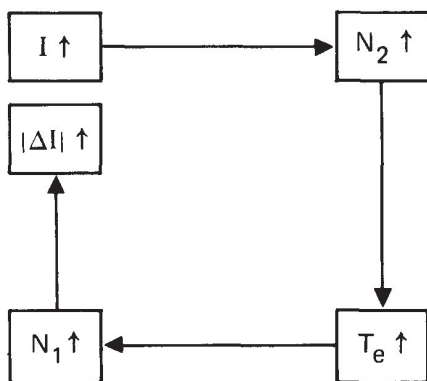


FIG. 3. Schematic to explain the inducible absorption behavior in quiresonant laser-produced plasma.

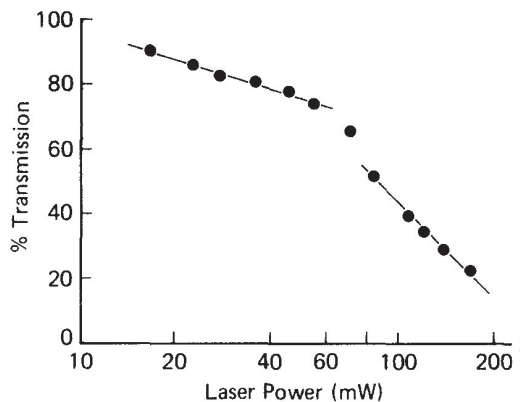


FIG. 4. Observed inducible absorption behavior in the QRLPP in a Cs vapor (at an atomic density of  $10^{17} \text{ cm}^{-3}$ ) excited by a cw laser beam at  $6010 \text{ \AA}$  ( $8D_{3/2} \leftarrow 6P_{1/2}$  transition). A laser spark appears near the focus for laser power exceeding  $70 \text{ mW}$ .

or hole burning. The inducible absorption can be qualitatively explained by the reactions shown in Fig. 3. An increase in the laser intensity  $I$  produces a higher density  $N_2$  through optical excitation; this causes a higher electron density through associative ionization and also a higher electron temperature by superelastic collisions; the resonant excited state density  $N_1$  is thus increased by more frequent electron excitation from the ground state; this in turn causes an increase in the absorption  $|\Delta I|$  due to an increase in  $N_1$ . Even a small increase in  $N_1$  may cause a large change in  $|\Delta I|$ , which depends on  $N_1$  exponentially. An example of the inducible absorption behavior observed for a Cs vapor is shown in Fig. 4: we see that the vapor is highly transparent to the quiresonant laser beam in the low-intensity limit, but is opaque at sufficiently high intensity.

An interesting manifestation of the inducible-absorption behavior of a QRLPP is the automatic noise-reduction effect. The amplitude noise of the incident cw laser is greatly reduced on transmission through the plasma. To study this noise-reduction effect quantitatively, a sinusoidal modulation of a small fixed amplitude and variable frequency  $f$  is superimposed on the incident laser beam. The fractional modulation in the transmitted laser beam is found<sup>18</sup> to be much smaller than the fractional modulation in the incident beam for low  $f$ , but the two modulations are nearly equal at high  $f$ . The following simplified rate equation analysis of this noise-reduction effect and its dependence on  $f$  provides some insight into the QRLPP mechanisms.

Let the incident laser beam be weakly modulated,

$$I = I_0 + I' \exp(i\omega t), \quad (10)$$

where  $\omega = 2\pi f$ ,  $I'$  is the amplitude of modulation which is much smaller than the steady component  $I_0$ , and it is understood that only the real parts of any complex quantities have physical meaning. The incident fractional modulation is  $m$  given by

$$m = I'/I_0. \quad (11)$$

The ac component  $I'$  of the incident light produces ac components  $N_2'$ ,  $N_e'$ , and  $N_1'$  in the densities  $N_2$ ,  $N_e$ , and  $N_1$ , which are densities of  $B$  atoms, electrons, and  $A$  atoms, re-

spectively. To simplify analysis, we assume that  $N_2$  is characterized by a fast decay time  $\tau_2$  given by

$$1/\tau_2 = 1/\tau_2^{\text{rad}} + N\alpha_{ai} + 1/\tau_2^{\text{dif}}, \quad (12)$$

where terms on the right-hand side represent radiative decay rate, associative ionization rate, and diffusion rate out of the plasma volume. The rate equation for  $N_2$  is,

$$dN_2/dt = BIN_1 - N_2/\tau_2, \quad (13)$$

where  $B$  is the Einstein absorption coefficient, and we have assumed that  $N_2$  is small compared to  $N_1$  because  $\tau_2$  is short. We further assume that the fractional modulation of  $N_1$  is small compared to that in  $I$ , so that we may replace  $N_1$  by  $N_{10}$ , the dc component. This assumption seems reasonable in the Cs case we have studied, since spatial diffusion and plasma volume expansion would limit the fractional increase in densities of excited species to be smaller than that in  $I$ . With those assumptions we may solve Eq. (13) and obtain

$$N_2 = N_{20} + N'_2 \exp(i\omega t), \quad (14)$$

where

$$N_{20} = BI_0 N_{10} \tau_2, \quad N'_2 = BI' N_{10} \tau_2,$$

and  $\omega$  is small enough so that  $\omega\tau_2 \ll 1$ .

The rate equation for  $N_e$  is approximately

$$dN_e/dt = N_2 N \alpha_{ai} - N_e/\tau_e, \quad (15)$$

where  $\tau_e$  is the decay time of the electron density, and is assumed to be diffusion limited (independent of the electron density). Substituting Eq. (14) into (15), we obtain

$$N_e = N_{e0} + \frac{N'_e \exp[i(\omega t - \phi)]}{[1 + (\omega\tau_e)^2]^{1/2}}, \quad (16)$$

where

$$N_{e0} = N_{20} N \alpha_{ai} \tau_e, \quad N'_e = N'_2 N \alpha_{ai} \tau_e,$$

and

$$\phi = \tan^{-1}(\omega\tau_e). \quad (17)$$

$\phi$  is the phase delay of the electron density due to its comparatively slower decay rate (ambipolar diffusion rate of the electrons out of the laser focus volume of diameter  $\sim 10^{-2}$  cm at a typical  $N \sim 10^{17}$  cm $^{-3}$  is  $\lesssim 10^6$  sec $^{-1}$ ). Now, we further assume that the density  $N_1$  is closely coupled to the electron density (because the resonant excited state is strongly produced from the ground state by electron collision), and that the decay rate of  $N_1$  is faster than the decay rate of  $N_e$ . Thus, we have

$$N_1 = N_{10} + \frac{N'_1 \exp[i(\omega t - \phi)]}{[1 + (\omega\tau_e)^2]^{1/2}}, \quad (18)$$

where  $N_{10}$  is the time averaged resonant excited density and  $N'_1$  is a coefficient for the modulated component of  $N_1$  due to the modulation in the electron density.

The transmitted laser intensity  $I_t$  is,

$$I_t = I \exp(-N_1 V), \quad (19)$$

where  $V$  is the product of the optical absorption coefficient and the path length. Substituting the real part of Eqs. (10) and (18) into Eq. (19), we have

$$\begin{aligned} I_t &= (I_0 + I' \cos\omega t) \exp\left[-N_{10}V - \frac{N'_1 V \cos(\omega t - \phi)}{[1 + (\omega\tau_e)^2]^{1/2}}\right] \\ &\approx (I_0 + I' \cos\omega t) \left(1 - \frac{N'_1 V \cos(\omega t - \phi)}{[1 + (\omega\tau_e)^2]^{1/2}}\right) \\ &\quad \times \exp(-N_{10}V) \\ &\approx \left[I_0 + I' \cos\omega t - \frac{N'_1 I_0 V \cos(\omega t - \phi)}{[1 + (\omega\tau_e)^2]^{1/2}}\right] \exp(-N_{10}V), \end{aligned} \quad (20)$$

where we have assumed that all modulated components are small and only first-order terms will be retained. We may rewrite Eq. (20) as

$$\begin{aligned} I_t \exp N_{10}V &= I_0 + \left[\left(I' - \frac{I_0 N'_1 V}{1 + (\omega\tau_e)^2}\right)^2 \right. \\ &\quad \left. + \left(\frac{I_0 N'_1 V \omega\tau_e}{1 + (\omega\tau_e)^2}\right)^2\right]^{1/2} \cos(\omega t + \psi), \end{aligned} \quad (21)$$

where

$$\tan\psi = \frac{I_0 N'_1 V \omega\tau_e}{[1 + (\omega\tau_e)^2] I' - I_0 N'_1 V}. \quad (22)$$

Equation (21) predicts that the transmitted fractional modulation is

$$m_t = \left[\left(m - \frac{\gamma}{1 + (\omega\tau_e)^2}\right)^2 + \left(\frac{\gamma\omega\tau_e}{1 + (\omega\tau_e)^2}\right)^2\right]^{1/2}, \quad (23)$$

where  $m = I'/I_0$  is the incident fractional modulation, and

$$\gamma = N'_1 V. \quad (24)$$

Equation (23) predicts that  $m_t \rightarrow m - \gamma$  as  $\omega \rightarrow 0$  and  $m_t \rightarrow m$  as  $\omega \rightarrow \infty$ , which means that the transmitted fractional modulation is smaller than the incident fractional modulation at low modulation frequency, but the two fractional modulations become equal at high frequency. This behavior has been observed,<sup>18</sup> and the general dependence predicted by Eq. (23) (with  $\gamma$  and  $\tau_e$  treated as parameters to fit the experimental data) has also been verified.<sup>18</sup> This good experimental fit is somewhat surprising in view of the several drastic assumptions made here to facilitate an analytical solution. A more detailed treatment, using numerical solutions of a more complete set of rate equations similar to the techniques of Measure *et al.*,<sup>15</sup> would be needed for a better understanding of the QRLPP mechanics. However, the present analytical treatment provides insight and qualitative understanding of the QRLPP mechanism.

#### IV. SELF-OSCILLATIONS OF cw PLASMA

Using a single mode cw dye laser turned near the 6010 Å quaresonant absorption line of Cs, we have studied the dependence of the laser-plasma generation on the laser tuning. No external modulation is now applied to the incident laser beam. The transmitted laser intensity through the Cs vapor is shown in Fig. 5. When the laser is tuned on the low-frequency wing of the  $8D_{3/2} \leftarrow 6P_{1/2}$  absorption line, the QRLPP is quiescent, and the transmitted laser exhibits the noise-reduction effect discussed in the previous section. However, when the laser is tuned to the high-frequency

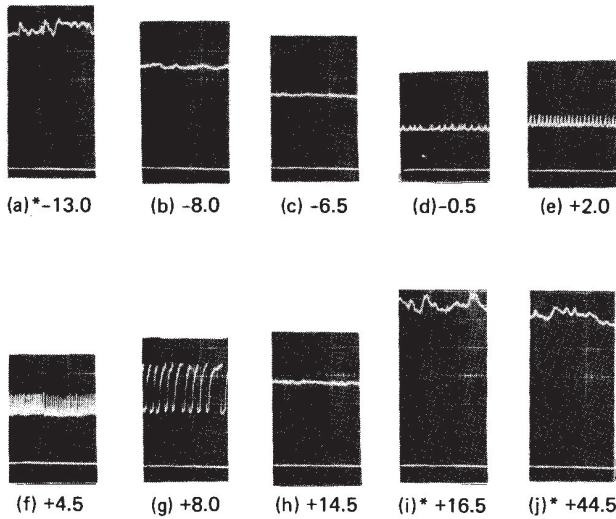


FIG. 5. Time variation of the transmitted laser beam (of power fixed at 170 mW) through the Cs vapor at 380 °C. The numbers indicated in (a) to (j) are detuning of the laser (in GHz) from the center of the absorption line. No plasma is formed in (a), (i), and (j) (denoted by asterisk). On the low-frequency wing [i.e., (b) and (c)] QRLPP is formed and noise reduction is observed in the transmitted beam. Near line center and on the high-frequency wing, (d)–(g), self-oscillation of the QRLPP occurs. For large positive detuning (h), no self-oscillation in the QRLPP is observed, but the plasma is “metastable”, i.e., it is destroyed when the cw laser is momentarily interrupted. The horizontal time scale is 10 msec/cm, and the vertical scale (proportional to laser intensity) is constant in each scope picture, with the zero line given near the bottom.

wing, the transmitted laser beam shows regular modulation, indicating self-oscillations of the plasma.

In order to study the origin of the self-oscillation for high-frequency-wing excitation, spatially resolved fluorescence from the plasma is studied. The time-dependent fluorescence intensity  $F$  at 6973 Å is measured.  $F$  is proportional to the  $Cs^*(7D)$  excited state density, which is a measure of the electron temperature for a plasma in collisional equilibrium. We use a monochromator and photomultiplier to measure  $F$  from a small spot (of 0.1 mm size) at the laser focus. As shown in Fig. 6,  $F$  suddenly increases at the time of peak of the transmitted laser intensity, and then  $F$  decays back to its original value. This observation can be explained as follows: at a peak transmission of the laser, the intensity at the focus is maximum, since absorption upstream is smaller than average (to give peak transmission) and we assume negligible absorption downstream from the laser focus. Thus the plasma density at the focus suddenly increases, and subsequently the excess plasma density decays by diffusion. The slowing down of the diffusion rate as the Cs density  $N$  increases is clearly shown in Fig. 6: the decrease in fluorescence  $F$  (after the peak) has a time constant which is found to be proportional to  $N$ , indicative of a diffusion-controlled decay.

To show that plasma diffusion upstream is significant in the self-oscillating plasma, the fluorescence at different positions upstream from the laser focus is measured, as shown in Fig. 7. The onset of the increase in  $F$  and its subsequent decay is more and more time delayed (with respect to the transmission peak) as the observation point is further away from the laser focus. Indeed, the delay time  $\tau$  between the transmis-

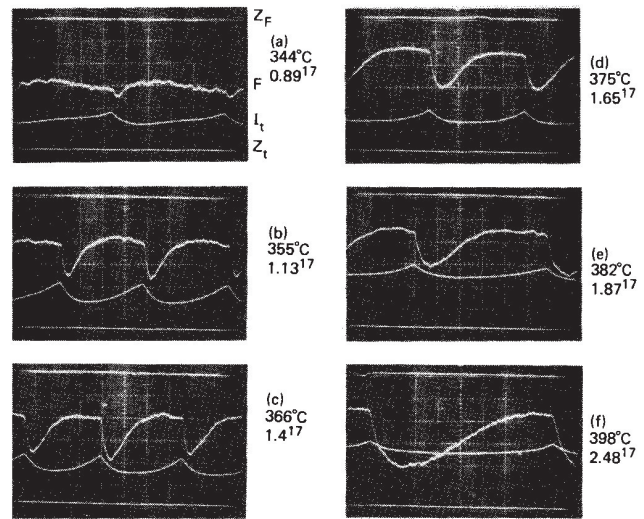


FIG. 6. Transmitted laser intensity (lower curve, marked  $I_t$ ) and fluorescence at the laser focus (upper curve, marked  $F$ ) in a QRLPP in Cs at various temperatures and atomic densities as given. The zero line for  $I_t$  is marked  $Z_t$  at the bottom, and the zero line for  $F$  is marked  $Z_f$  at the top (hence  $I_t$  and  $F$  increases in opposite directions). The horizontal time scale is 0.2 msec/cm for all the scope pictures shown, and the laser detuning is +4.5 GHz [i.e., case (f) in Fig. 5]. We clearly see that the decay time constant for the fluorescence increases linearly as  $N$  increases.

sion peak and the fluorescence peak varies as the square of the distance  $d$  upstream from the laser focus, and we find that

$$d^2/6\tau \approx D \approx 100 \text{ cm}^2/\text{sec}. \quad (25)$$

This again indicates that a random-walk-type diffusion up-

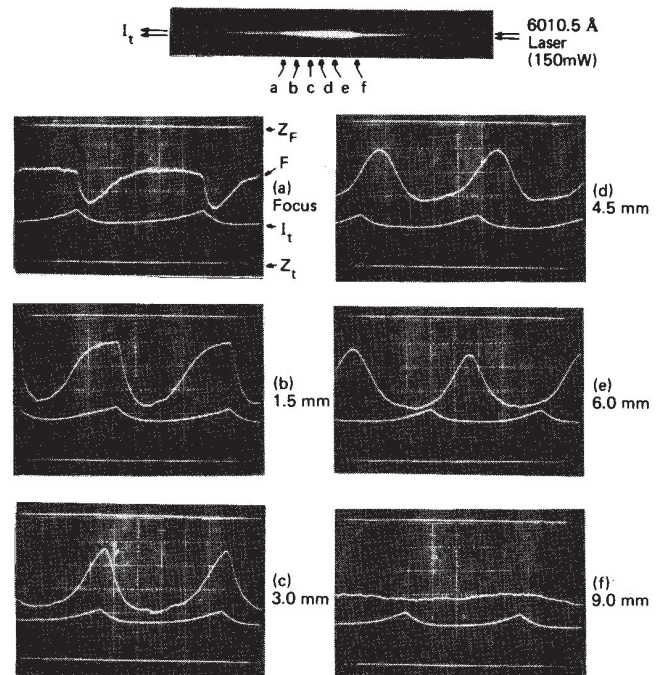


FIG. 7. Transmitted laser intensity ( $I_t$ ) and fluorescence intensity ( $F$ ) at various positions in the QRLPP. (a) gives  $F$  at the laser focus, while (b)–(f) give  $F$  at increasing distance upstream from the laser focus (the distance is indicated). The Cs density is fixed at  $1.8 \times 10^{17} \text{ cm}^{-3}$ .

stream from the laser focus is a cause of the observed oscillation.

Thus the origin of self-oscillation in cw plasma produced by a quasisresonant laser beam can be explained as follows: Breakdown occurs preferentially at the laser focus because of the high laser intensity. Suppose at one instance, the average plasma density upstream from the laser is reduced causing less laser absorption. Thus the laser intensity at the focus increases. This causes higher plasma density at the focus. Diffusion of the increased density upstream causes more absorption of the laser. Thus the laser intensity at the focus is decreased, and plasma density at the focus decreases. Diffusion upstream again causes a reduced plasma density upstream and the cycle repeats.

The above self-oscillation argument is similar to the argument for noise-reduction effect shown in Fig. 3. The only difference here is that diffusion of the plasma plays a key role in the self-oscillation effect. The difference is important only if longitudinal diffusion through the length of the plasma spark (typically several mm in length) is long compared to other time scales like decay time of electron density (limited by transverse diffusion out of the plasma volume). This may explain why self-oscillation of the QRLPP occurs only for the laser being on the high-frequency wing, but not on the low-frequency wing. If the laser is on the high-frequency wing of the absorption line, atoms at the laser focus moving away from the center of the plasma volume are excited, and hence the ions produced (through associative ionization) are preferentially moving away and they drag electrons along with them. Thus longitudinal diffusion upstream is slow, and self-oscillation occurs. On the other hand, if the laser is on the low-frequency wing, atoms at the focus moving towards the center of the plasma spark are excited, and thus the ions produced move towards the center of the plasma preferentially. Thus longitudinal diffusion of the plasma upstream is fast, and self-oscillation is suppressed. Indeed, on the low-frequency wing, only the noise-reduction effect can be observed. Note that the noise-reduction and modulation reduction effects described in Sec. III are observed for the laser on the low-frequency wing only.

## V. DISCUSSION

The quasisresonant laser-produced plasma generation is a new efficient method to generate a continuous plasma with cw lasers. The QRLPP generation in a Cs vapor, using cw laser or pulsed laser quasisresonant excitation, has been experimentally observed. Although this paper is mainly based on our experimental study for a Cs vapor excited by the  $8D \leftarrow 6P$  excitation line, efficient plasma generation in other elements using suitable quasisresonant laser excitation should be quite similar. For example, Stwalley<sup>21</sup> and co-workers have observed efficient cw plasma generation in a Na vapor when the  $4D \leftarrow 3P$  line is excited. In the Cs case, we have also observed that laser excitations to the  $9D$  and

$10D$  states also produce plasmas, but the breakdown threshold intensities are higher than excitation to the  $8D$  case. All the alkali metal vapors should readily form QRLPP when suitably excited.

Many other atomic systems (besides the alkalis) are interesting candidates for QRLPP generation. For example, noble gas plasmas are important for plasma etchings, and they also may be quite useful as sources for ion microscopes. Since QRLPP is nearly a point source, it is specially suitable for these purposes. Xe seems to be the best gas for the study of QRLPP generation in noble gases, since its first resonant excited energy and its ionization energy are both lowest among the noble gases. Other interesting candidates are the alkali-earth vapors. Many of them (e.g., Ba) have strong quasisresonant absorption lines in the visible, and QRLPP in those vapors may prove to be useful for the spectroscopy of these ions, or for studying plasma waves and other properties.

## ACKNOWLEDGMENTS

I thank W. C. Stwalley, M. Koch, K. K. Verma, and J. C. Wyss of Iowa State University for their encouragements and useful discussions of their experimental results of plasma generation in Na and other atomic vapors. I also thank B. H. Schechtman and M. D. Levenson for their enthusiastic suggestions and critical reviews of the manuscript. Part of this work was done while the author was in Bell Laboratories, Murray Hill.

<sup>1</sup>See for example *Laser Induced Fusion and X-ray Laser Studies*, edited by S. F. Jacobs *et al.* in *Physics of Quantum Electronics* (Addison-Wesley, Reading, Mass., 1976), Vol. 3.

<sup>2</sup>W. T. Silfvast and L. H. Szeto, *Appl. Phys. Lett.* **31**, 726 (1977).

<sup>3</sup>R. W. Thompson, E. J. Manista, and D. L. Alger, *Appl. Phys. Lett.* **32**, 610 (1978).

<sup>4</sup>E. Yablonovitch and J. Goldhar, *Appl. Phys. Lett.* **25**, 580 (1974).

<sup>5</sup>T. J. McIlrath and T. B. Lucatoro, *Phys. Rev. Lett.* **38**, 1390 (1977).

<sup>6</sup>L. K. Lam and L. D. Scheerer, *Chem. Phys. Lett.* **60**, 130 (1978).

<sup>7</sup>T. Okuda, K. Kishi, and K. Sawada, *Appl. Phys. Lett.* **15**, 181 (1969).

<sup>8</sup>N. A. Generalov, V. P. Zimakov, G. I. Kozlov, V. A. Masyukov, and Yu. P. Raizer, *JETP Lett.* **11**, 302 (1970).

<sup>9</sup>D. C. Smith and M. C. Fowler, *Appl. Phys. Lett.* **22**, 500 (1973).

<sup>10</sup>I. Meyer and P. Stritzke, *Appl. Phys.* **13**, 131 (1977).

<sup>11</sup>R. M. Measures, *J. Quant. Spectrosc. Radiat. Transfer* **10**, 107 (1970).

<sup>12</sup>J. Yamada and T. Okuda, *J. Phys. Soc. Jpn.* **35**, 881 (1973).

<sup>13</sup>T. B. Lucatoro and T. J. McIlrath, *Phys. Rev. Lett.* **37**, 428 (1976).

<sup>14</sup>G. Moe and W. Happer, *Bull. Am. Phys. Soc.* **23**, 33 (1978).

<sup>15</sup>R. M. Measures, N. Drexell, and P. Cardinal, *J. Appl. Phys.* **50**, 2662 (1979).

<sup>16</sup>R. M. Measures, N. Drexell, and P. Cardinal, *Appl. Opt.* **18**, 1824 (1979).

<sup>17</sup>A. C. Tam and W. Happer, *Opt. Commun.* **21**, 403 (1977).

<sup>18</sup>A. C. Tam, *Appl. Phys. Lett.* **35**, 683 (1979).

<sup>19</sup>B. U. Dobrolez, A. N. Klyucharev, and V. Yu. Sepman, *Opt. Spectrosc.* **38**, 630 (1975).

<sup>20</sup>C. B. Collins, B. W. Johnson, M. Y. Mirza, D. Popescu, and I. Popescu, *Phys. Rev. A* **10**, 813 (1974).

<sup>21</sup>W. C. Stwalley, M. Koch, and J. C. Wyss (private communication); M. E. Koch, K. K. Verma, and W. C. Stwalley, *Eleventh International Quantum Electronics Conference, Digest of Technical Papers*, p. 627 (1980), unpublished.