

The Backup dialogue contains check boxes labelled **All device data**, **Selected device data**, and **Memory card data**.

The *Selected device data* option does not backup settings and add-on applications.

- Ž **All device data**, when checked, backs up Calendar and Contact data, documents, settings, and add-on applications.
- Ž **Selected device data**, when checked, enables three additional check boxes. You can select any or all of these options.
 - Ž **Calendar data**: Backs up your Calendar data, including both Calendar and To do list records.
 - Ž **Contact**: Backs up Contact records.
 - Ž **Documents**: Backs up communicator documents.
- Ž **Memory card data**: Lets you include data in your Nokia 9110 Communicator Memory Card in the backup. If you do not check this option, Memory Card data is excluded from the backup.

Using the **Browse** button to specify the Backup path prevents you from making typographical errors.

3. Using the check boxes in the Backup dialogue, specify the data to backup.
4. In the box labelled **Backup Path**, specify the location (path) where you want backups stored. The backup name, **Nokia9110Backup**, is assigned automatically.

Number of Backup Stores

The PC Suite Backup command creates multiple, sequentially numbered backups—e.g., *Nokia9110Backup01*, *Nokia9110Backup02*, *Nokia9110Backup03*, and so on.

Nokia9110Backup01 is always the most recent backup.

The maximum number of backups stored is determined by the value entered in the box labelled **Number of backup stores**. The default value is 3. You can enter any number between 1 and 99.

Note: If you change this number before creating a new backup, existing backups will be deleted if the number you enter is less than number of existing backups. For example, if you have 10 existing backups, and you change the number to 5, the five oldest backups will be deleted when you create the new backup.

5. Enter a number between 1 and 99 in the box labelled **Number of backup stores**.
6. Click the **Backup** button to execute the Backup operation.

If you're using a desk stand with your communicator, refer to Desk Stand Button Settings, in Chapter 1, for information on how you can program your desk stand button to run the currently configured Backup operation.

Restoring a Backup

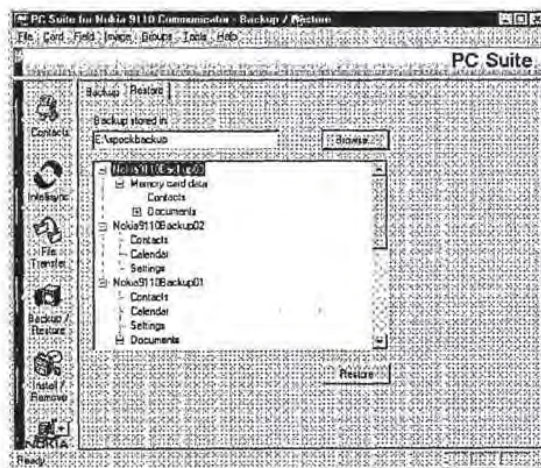


A single Restore operation can restore an entire backup (e.g., Nokia9110Backup 01) or one backup component (e.g., Contacts).

When there is no active connection between your communicator and PC, the Restore button is disabled in the Restore tab.

Follow these steps to restore a backup to your communicator:

1. Start PC Suite and click the **Backup/Restore** icon. Then click the **Restore** tab in the opening screen.
2. Connect your communicator to your PC COM port or establish an infrared connection.



The Restore dialogue lists all the backups in the specified Backup directory. Nokia9110Backup01 is always the most recent backup in the specified location.

3. If necessary, specify the location of the backup in the text box labelled **Backup store**. (The location of the last-created backup is entered by default.)
4. In the lower portion of the dialogue, click on the data you want to restore.

You can select an entire backup (e.g., Nokia9110Backup01), or one component of a backup (e.g., Contacts). If you want to restore more than one component, but not the entire backup, you'll need to run multiple Restore operations.

5. Click **Restore** to restore the backup to your communicator and exit the Restore dialogue.

Note: If you want to delete a backup or backups, you can do so in Windows Explorer or in the PC Suite File Transfer dialogue. Refer to "File Transfer Functions" in this chapter for information about PC Suite File Transfer functions.

Backup/Restore Menu Commands

FILE	
Exit	<i>Exits PC Suite</i>

VIEW	
Status Bar	<i>Toggles status bar on and off.</i>

COMPONENTS	
Contacts	<i>Starts Contacts application component.</i>
Intellisync	<i>Accesses Intellisync component.</i>
File Transfer	<i>Accesses File Transfer component.</i>
Backup/Restore	<i>Accesses Backup/Restore component.</i>
Install/Remove	<i>Accesses Install/Remove component.</i>
Import/Export	<i>Accesses Import/Export component.</i>

OPTICS	
Desk Stand Button Settings	<i>Displays desk stand button options.</i>
Registered Communicators	<i>Lists the communicators that have been connected and named.</i>
Preferences	<i>Displays the Preferences dialogue.</i>

HELP	
Contents	<i>Displays on-line Help Contents.</i>
Commands	<i>Displays command information.</i>
Using Help	<i>Accesses Help for on-line Help.</i>
About PC Suite	<i>Displays "About PC Suite" dialogue.</i>

Explore Litigation Insights

Docket Alarm provides insights to develop a more informed litigation strategy and the peace of mind of knowing you're on top of things.

Real-Time Litigation Alerts



Keep your litigation team up-to-date with **real-time alerts** and advanced team management tools built for the enterprise, all while greatly reducing PACER spend.

Our comprehensive service means we can handle Federal, State, and Administrative courts across the country.

Advanced Docket Research



With over 230 million records, Docket Alarm's cloud-native docket research platform finds what other services can't. Coverage includes Federal, State, plus PTAB, TTAB, ITC and NLRB decisions, all in one place.

Identify arguments that have been successful in the past with full text, pinpoint searching. Link to case law cited within any court document via Fastcase.

Analytics At Your Fingertips



Learn what happened the last time a particular judge, opposing counsel or company faced cases similar to yours.

Advanced out-of-the-box PTAB and TTAB analytics are always at your fingertips.

API

Docket Alarm offers a powerful API (application programming interface) to developers that want to integrate case filings into their apps.

LAW FIRMS

Build custom dashboards for your attorneys and clients with live data direct from the court.

Automate many repetitive legal tasks like conflict checks, document management, and marketing.

FINANCIAL INSTITUTIONS

Litigation and bankruptcy checks for companies and debtors.

E-DISCOVERY AND LEGAL VENDORS

Sync your system to PACER to automate legal marketing.