



United States Patent [19] Gotoh

[11] Patent Number: **5,931,572**
[45] Date of Patent: **Aug. 3, 1999**

- [54] **HEAD LAMP DEVICE FOR VEHICLE** 5,499,168 3/1996 Cochard et al. 362/466
- [75] Inventor: **Shinichiro Gotoh**, Wako, Japan 5,588,733 12/1996 Gotou 362/37
- [73] Assignee: **Honda Giken Kogyo Kabushiki** 5,660,454 8/1997 Mori et al. 362/466
Kaisha, Tokyo, Japan
- [21] Appl. No.: **08/858,361**
- [22] Filed: **May 19, 1997**
- [30] **Foreign Application Priority Data**
- May 20, 1996 [JP] Japan 8-124186
- [51] **Int. Cl.⁶** **B60Q 1/08**
- [52] **U.S. Cl.** **362/466; 362/272; 362/276**
- [58] **Field of Search** 340/466, 467,
340/575, 576; 362/37, 43, 464, 465, 466,
276, 802, 271, 272

FOREIGN PATENT DOCUMENTS

62-77249 4/1987 Japan .
314742 1/1991 Japan .

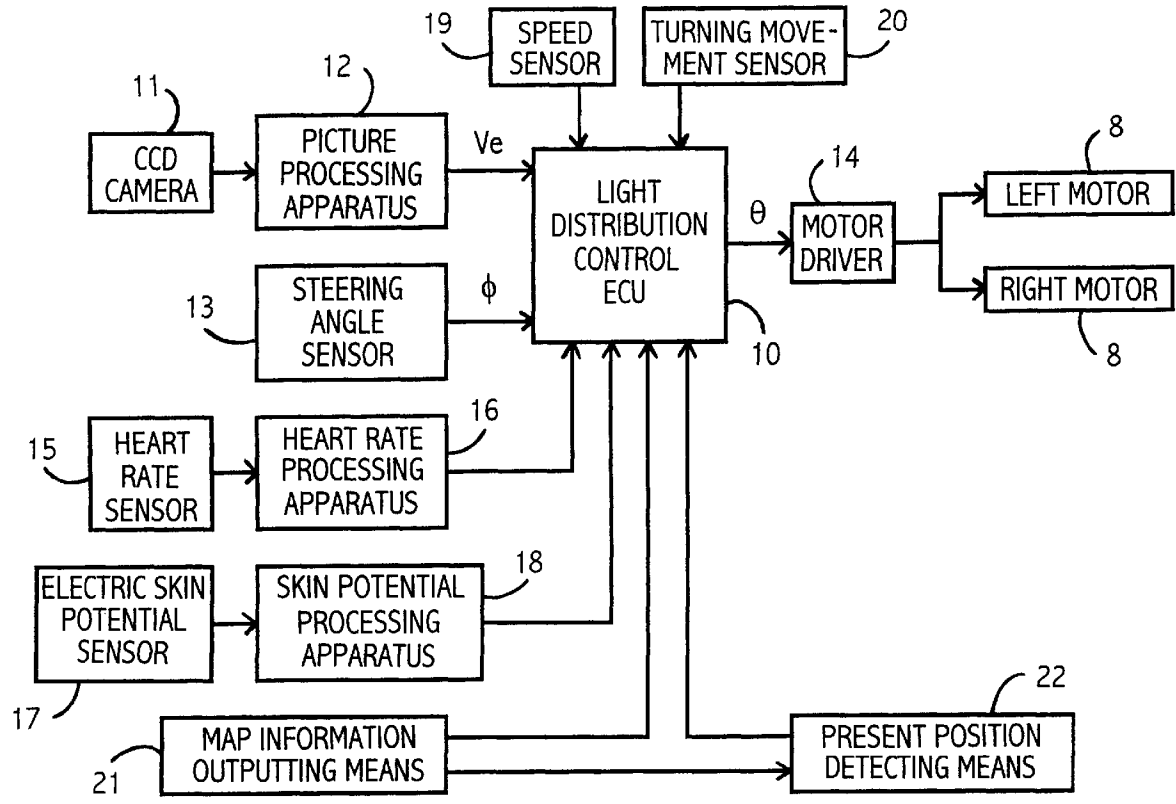
Primary Examiner—Alan Cariaso
Attorney, Agent, or Firm—Carrier, Blackman & Associates,
P.C.; Joseph P. Carrier; William D. Blackman

- [56] **References Cited**
- U.S. PATENT DOCUMENTS
- 4,604,611 8/1986 Seko et al. 340/576
- 4,858,080 8/1989 Oikawa 362/466
- 5,060,120 10/1991 Kobayashi et al. 362/465
- 5,138,540 8/1992 Kobayashi et al. 362/466
- 5,453,929 9/1995 Stove 340/575

[57] **ABSTRACT**

A head lamp device for a vehicle capable of changing a lighting region in front of the vehicle in rightward and leftward directions is provided. The device comprises a head lamp, lighting region changing means for changing the lighting region of the head lamp, strain degree detecting means for detecting degree of strain of the driver, and control means for controlling the lighting region changing means on the basis of information detected by the strain degree detecting means. The control means adjusts the amount and/or the speed of change of the lighting region in accordance with degree of strain of the driver. The change of the lighting region can be carried out naturally without sense of incongruity in view of degree of strain of the driver.

15 Claims, 6 Drawing Sheets



MBUSA LLC
EXHIBIT 1016

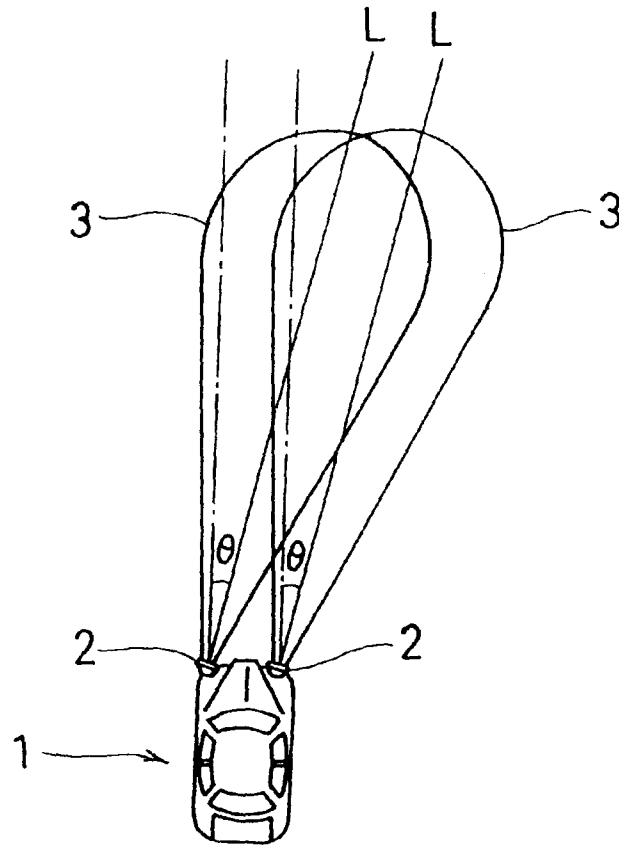


FIG. 1

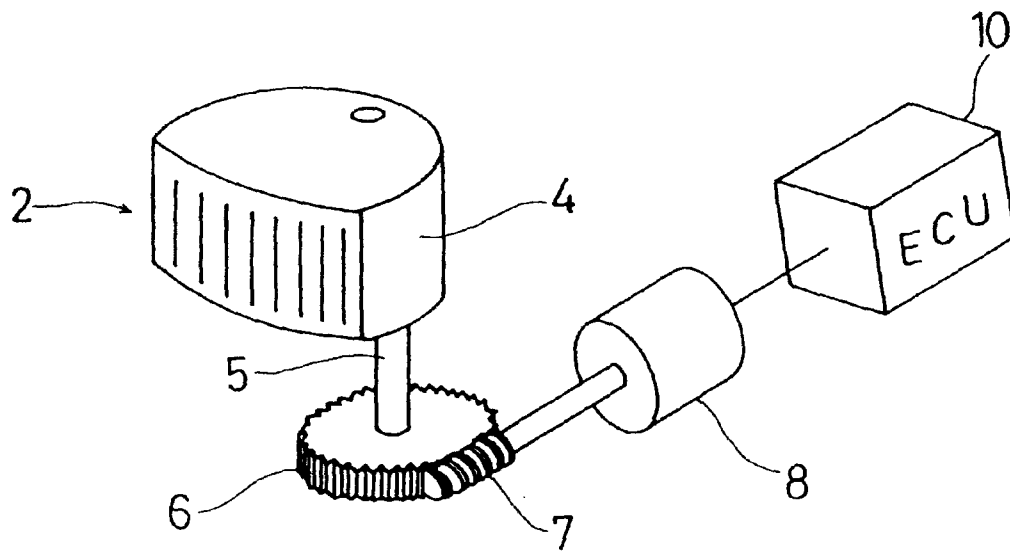


FIG. 2

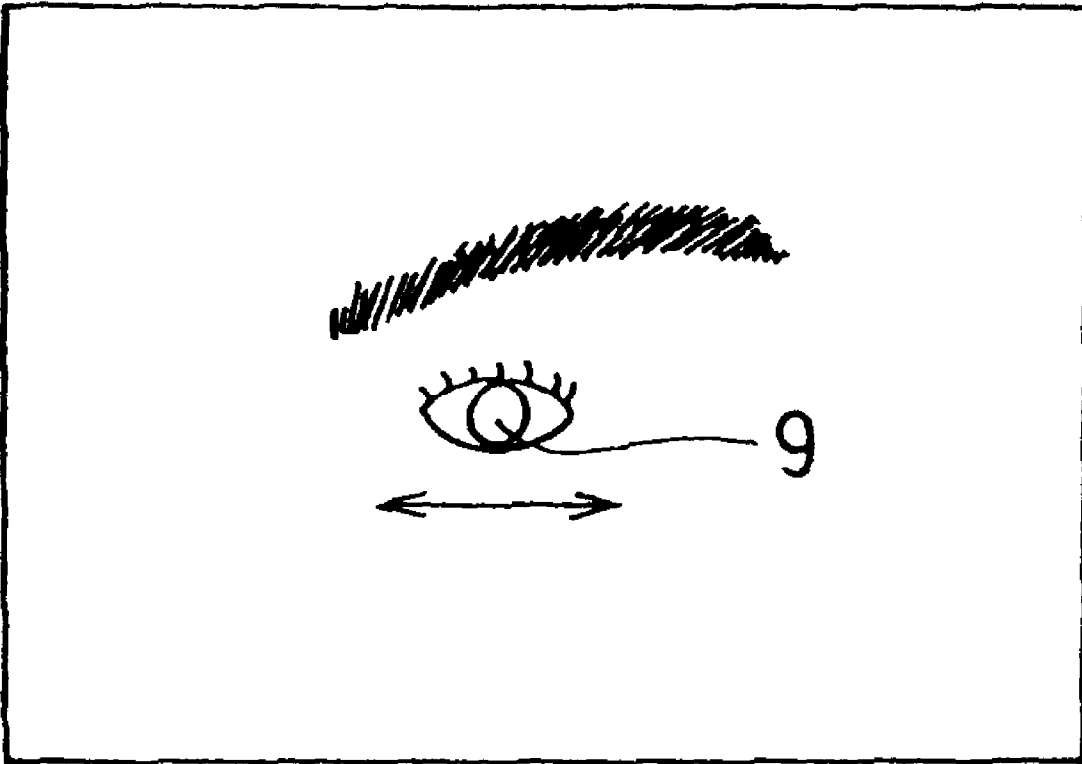
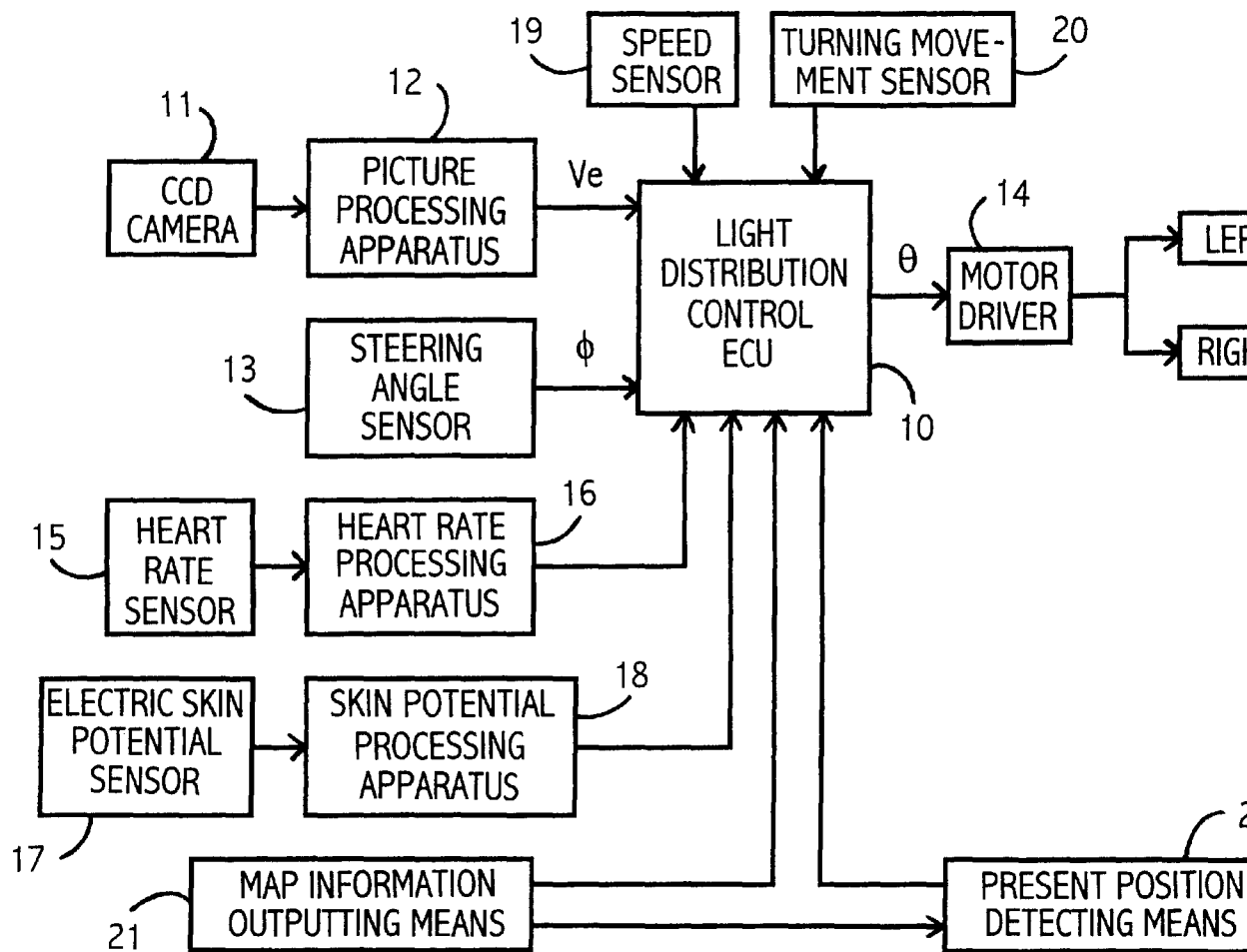


FIG. 3

FIG. 4



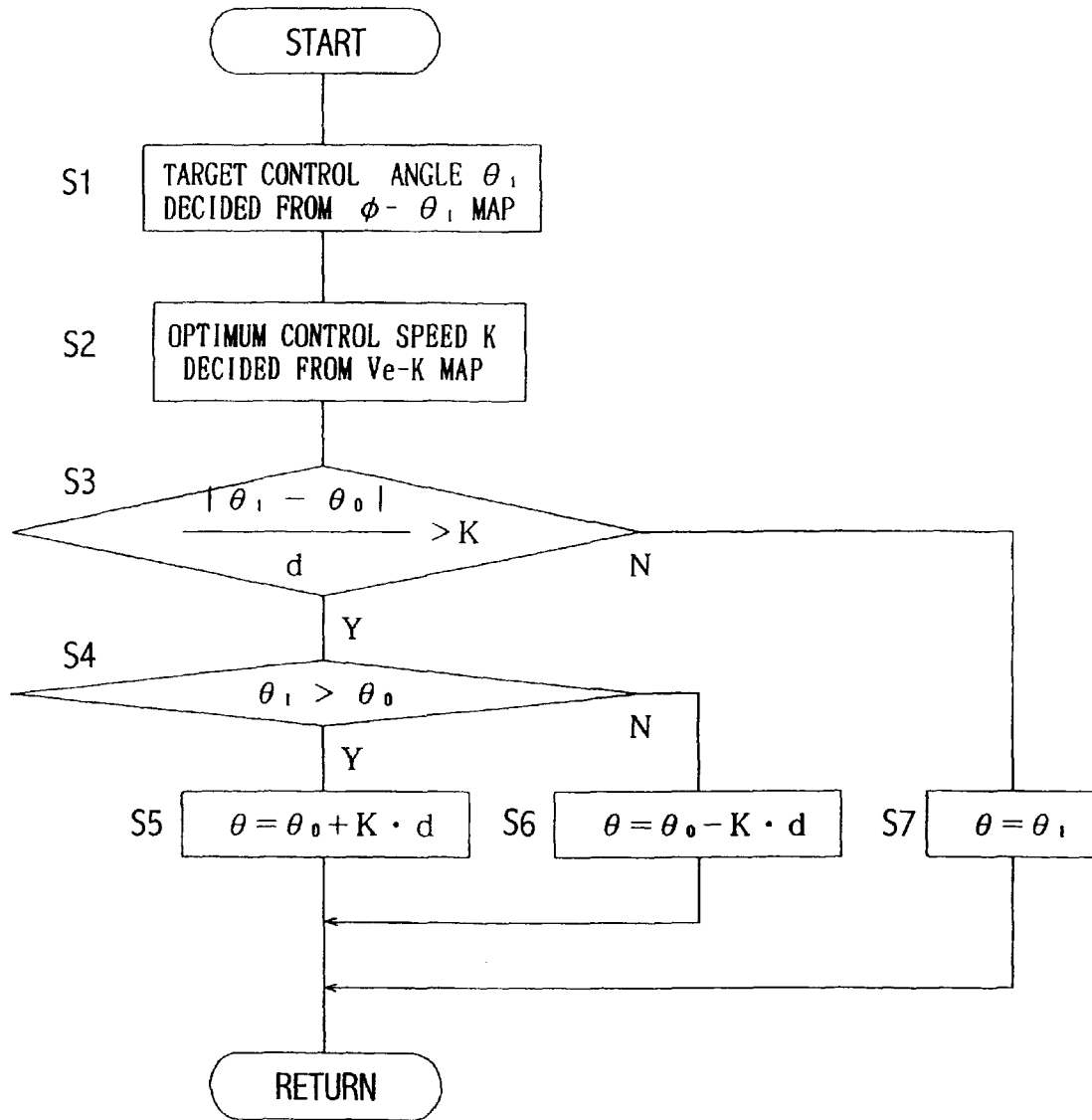


FIG. 5

Explore Litigation Insights

Docket Alarm provides insights to develop a more informed litigation strategy and the peace of mind of knowing you're on top of things.

Real-Time Litigation Alerts



Keep your litigation team up-to-date with **real-time alerts** and advanced team management tools built for the enterprise, all while greatly reducing PACER spend.

Our comprehensive service means we can handle Federal, State, and Administrative courts across the country.

Advanced Docket Research



With over 230 million records, Docket Alarm's cloud-native docket research platform finds what other services can't. Coverage includes Federal, State, plus PTAB, TTAB, ITC and NLRB decisions, all in one place.

Identify arguments that have been successful in the past with full text, pinpoint searching. Link to case law cited within any court document via Fastcase.

Analytics At Your Fingertips



Learn what happened the last time a particular judge, opposing counsel or company faced cases similar to yours.

Advanced out-of-the-box PTAB and TTAB analytics are always at your fingertips.

API

Docket Alarm offers a powerful API (application programming interface) to developers that want to integrate case filings into their apps.

LAW FIRMS

Build custom dashboards for your attorneys and clients with live data direct from the court.

Automate many repetitive legal tasks like conflict checks, document management, and marketing.

FINANCIAL INSTITUTIONS

Litigation and bankruptcy checks for companies and debtors.

E-DISCOVERY AND LEGAL VENDORS

Sync your system to PACER to automate legal marketing.