



[54] AUTOMATIC LIGHT SYSTEM FOR MOTOR VEHICLES OF ALL KINDS AND A METHOD FOR CONTROLLING A LIGHT SYSTEM

[75] Inventor: Ante Josić, Vrhovac 12/A, 10000 Zagreb, Croatia

[73] Assignee: Ante Josic, Croatia

[21] Appl. No.: 521,541

[22] Filed: Aug. 30, 1995

[30] Foreign Application Priority Data

Sep. 2, 1994 [DE] Germany ..... 44 31 332.2

[51] Int. Cl.<sup>6</sup> ..... B60Q 1/06

[52] U.S. Cl. .... 362/66; 362/37; 362/61; 362/286

[58] Field of Search ..... 362/66, 72, 61, 362/71, 40, 286, 287, 284, 80, 37, 277

[56] References Cited

U.S. PATENT DOCUMENTS

3,179,845	4/1965	Kulwicz	
4,768,135	8/1988	Kretschmer et al.	362/66
4,868,720	9/1989	Miyachi et al.	362/71
4,870,545	9/1989	Hatanaka et al.	362/72
4,891,559	1/1990	Matsumoto et al.	362/71
4,967,319	10/1990	Seko	362/80
5,191,530	3/1993	Hussmann et al.	362/71
5,217,087	6/1993	Ikegami et al.	362/72
5,426,571	6/1995	Jones	362/66

FOREIGN PATENT DOCUMENTS

2.155.503	4/1973	France
A2357960	11/1973	Germany
A2437585	11/1975	Germany
A3110094	3/1981	Germany
A3545495	7/1987	Germany
A3834764	5/1989	Germany
3810840	11/1989	Germany
41 22 531 A 1	1/1993	Germany
A4225370	2/1994	Germany
43 39 555 A 1	6/1994	Germany
43 41 409 A 1	6/1995	Germany

OTHER PUBLICATIONS

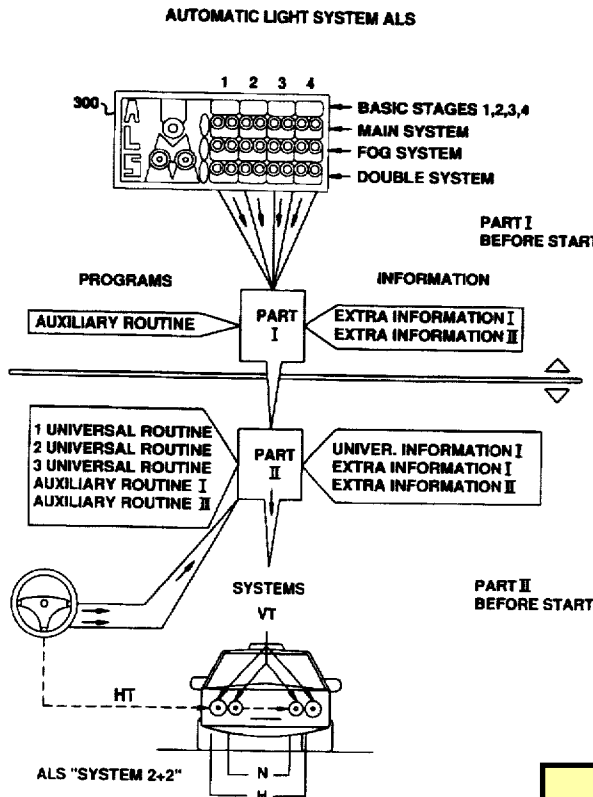
German Office action dated Mar. 20, 1995.

Primary Examiner—Thomas M. Sember  
Attorney, Agent, or Firm—Murtha, Cullina, Richter & Pinney

[57] ABSTRACT

The invention relates to an automatic light system (ALS) for motor vehicles of all types. According to the invention the headlamp system is operated in such a manner that at every instant of the journey the minimum beam range does not drop below the instantaneous stopping distance (=braking distance+reaction distance) of the vehicle and the particular light intensity required is determined and set. This can be done for example by vertical pivoting of the headlamps or reflectors. Furthermore, the beam direction is adapted to the instantaneous steering angle.

10 Claims, 7 Drawing Sheets



MBUSA LLC  
EXHIBIT 1013

FIG. 1

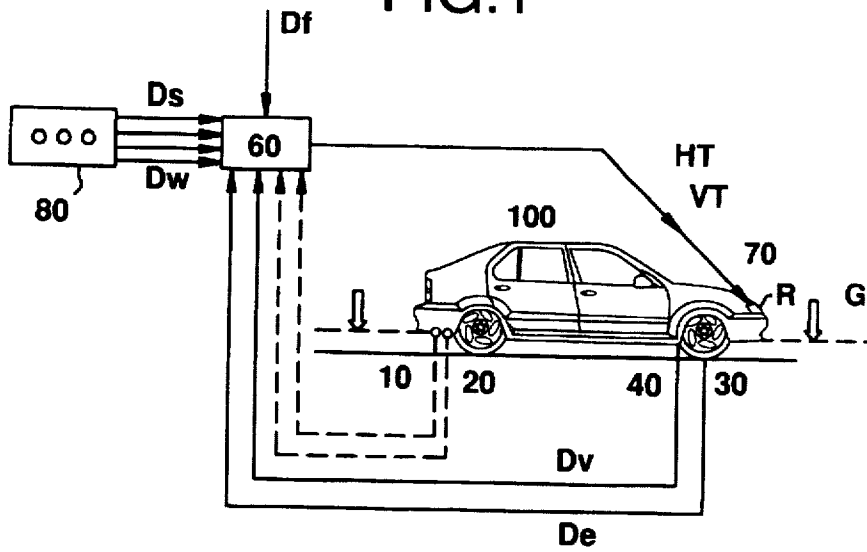


FIG. 2A

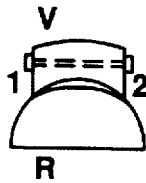


FIG. 2B

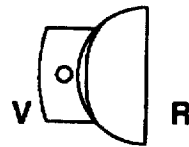


FIG. 13

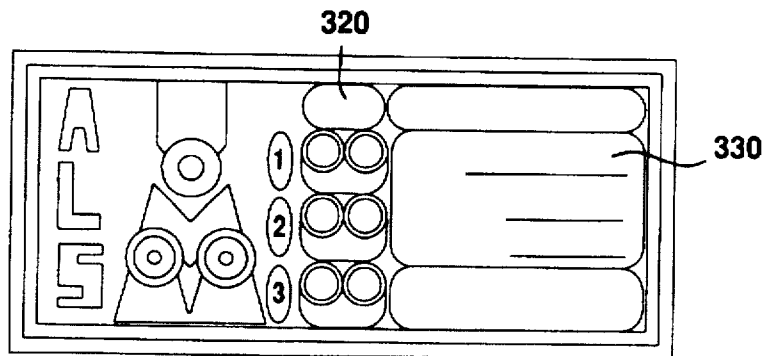


FIG.3A

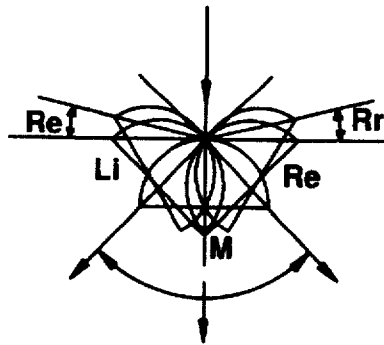


FIG.3D

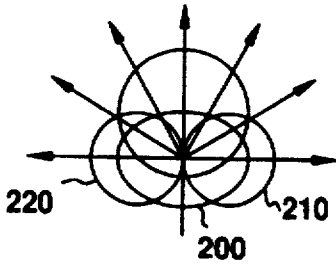


FIG.3B

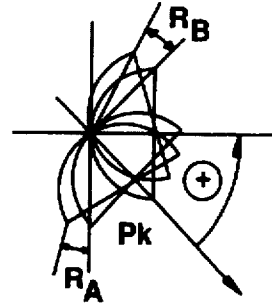


FIG.3E

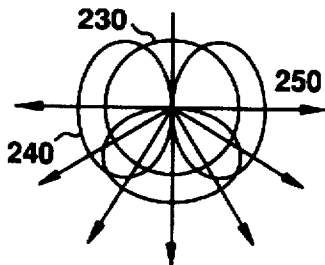


FIG.3C

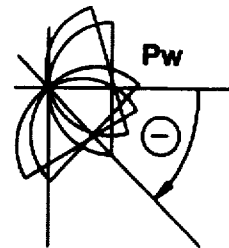


FIG.4

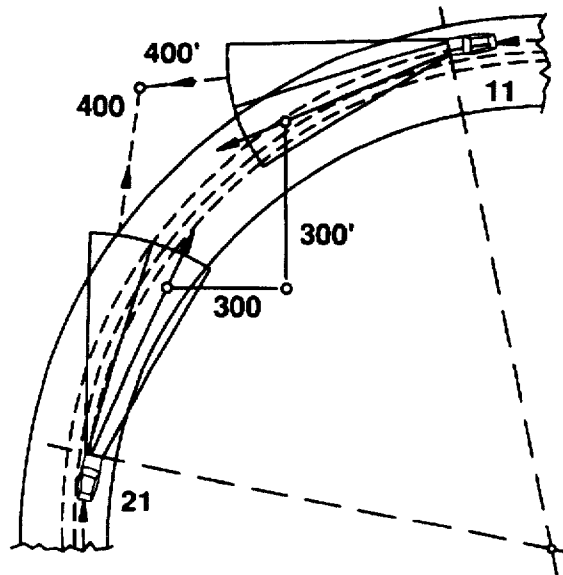


FIG.5

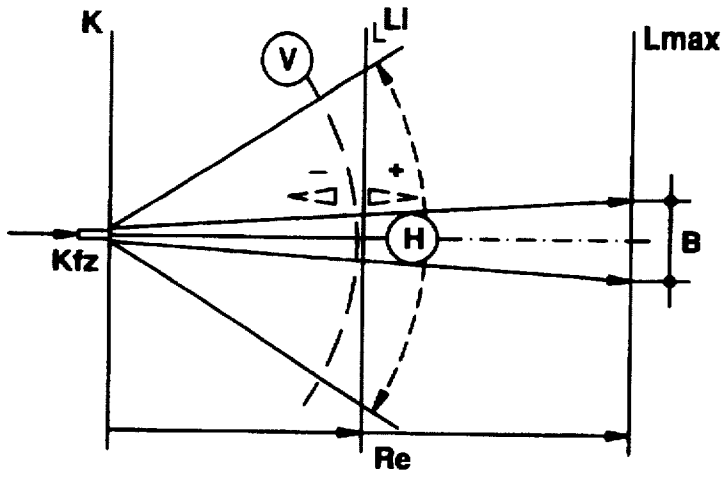


FIG.6

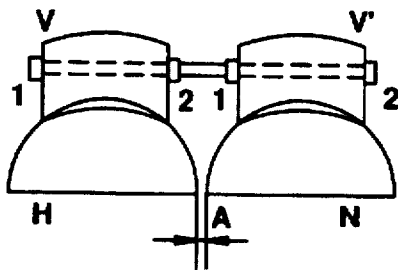


FIG.7

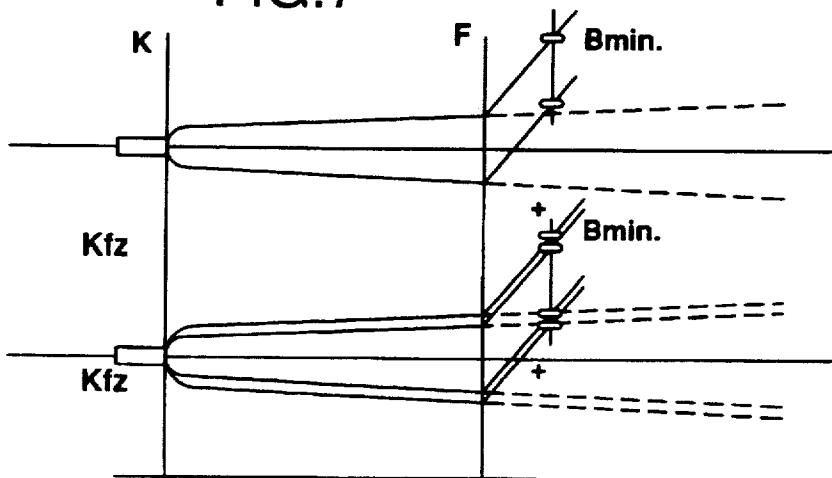


FIG.8

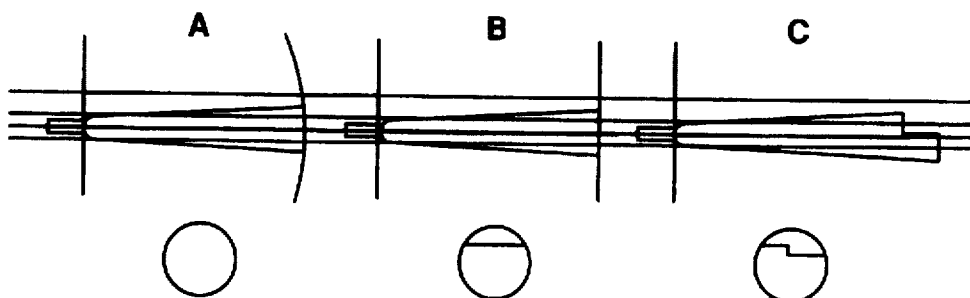


FIG.9A



FIG.9B

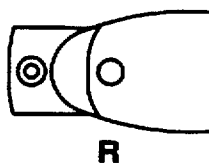
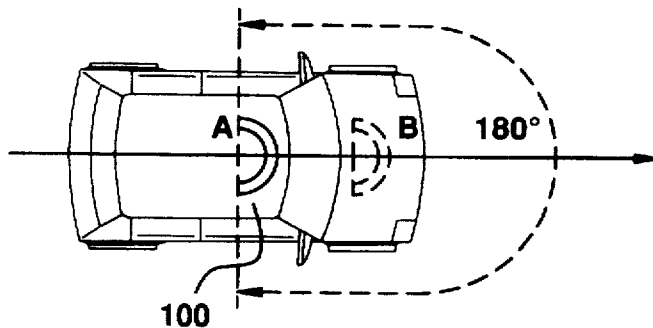


FIG.10



# Explore Litigation Insights

Docket Alarm provides insights to develop a more informed litigation strategy and the peace of mind of knowing you're on top of things.

## Real-Time Litigation Alerts



Keep your litigation team up-to-date with **real-time alerts** and advanced team management tools built for the enterprise, all while greatly reducing PACER spend.

Our comprehensive service means we can handle Federal, State, and Administrative courts across the country.

## Advanced Docket Research



With over 230 million records, Docket Alarm's cloud-native docket research platform finds what other services can't. Coverage includes Federal, State, plus PTAB, TTAB, ITC and NLRB decisions, all in one place.

Identify arguments that have been successful in the past with full text, pinpoint searching. Link to case law cited within any court document via Fastcase.

## Analytics At Your Fingertips



Learn what happened the last time a particular judge, opposing counsel or company faced cases similar to yours.

Advanced out-of-the-box PTAB and TTAB analytics are always at your fingertips.

## API

Docket Alarm offers a powerful API (application programming interface) to developers that want to integrate case filings into their apps.

## LAW FIRMS

Build custom dashboards for your attorneys and clients with live data direct from the court.

Automate many repetitive legal tasks like conflict checks, document management, and marketing.

## FINANCIAL INSTITUTIONS

Litigation and bankruptcy checks for companies and debtors.

## E-DISCOVERY AND LEGAL VENDORS

Sync your system to PACER to automate legal marketing.