



US007877403B2

(12) **United States Patent**
Schwalb

(10) **Patent No.:** **US 7,877,403 B2**
(45) **Date of Patent:** **Jan. 25, 2011**

(54) **SYSTEM AND METHOD FOR DATABASE SEARCHING USING FUZZY RULES**

2004/0139072 A1* 7/2004 Broder et al. 707/4
2007/0011154 A1* 1/2007 Musgrove et al. 707/5
2007/0179776 A1* 8/2007 Segond et al. 704/9

(75) Inventor: **Edward M. Schwalb**, Irvine, CA (US)

OTHER PUBLICATIONS

(73) Assignee: **Data Trace Information Services, LLC**, Santa Ana, CA (US)

Oshika et al., "Computational Techniques for Improved Name Search," Proceedings of the Second Conference on Applied Natural Language Processing, 1988.*

(*) Notice: Subject to any disclaimer, the term of this patent is extended or adjusted under 35 U.S.C. 154(b) by 369 days.

* cited by examiner

(21) Appl. No.: **11/751,186**

Primary Examiner—Tim T. Vo
Assistant Examiner—Aaron Sanders
(74) *Attorney, Agent, or Firm*—Snell & Wilmer L.L.P.

(22) Filed: **May 21, 2007**

(57) **ABSTRACT**

(65) **Prior Publication Data**

US 2008/0294616 A1 Nov. 27, 2008

An apparatus and method for database searching using fuzzy rules is presented. The apparatus and method may accept a word or word phrase such as a persons name and returns fuzzy rules for database searching. Applicable search rules are selected and word or word phrase equivalents are displayed to a user. The user accepts or rejects each of the word or word phrase. The word or word phrase along with the user's acceptance or rejection are stored in a sample database. The fuzzy rules are modified according to the data in the sample database. The database is filtered by training and testing portions of the database for accuracy and purging the least accurate portions.

(51) **Int. Cl.**
G06F 7/00 (2006.01)

(52) **U.S. Cl.** **707/767; 704/9**

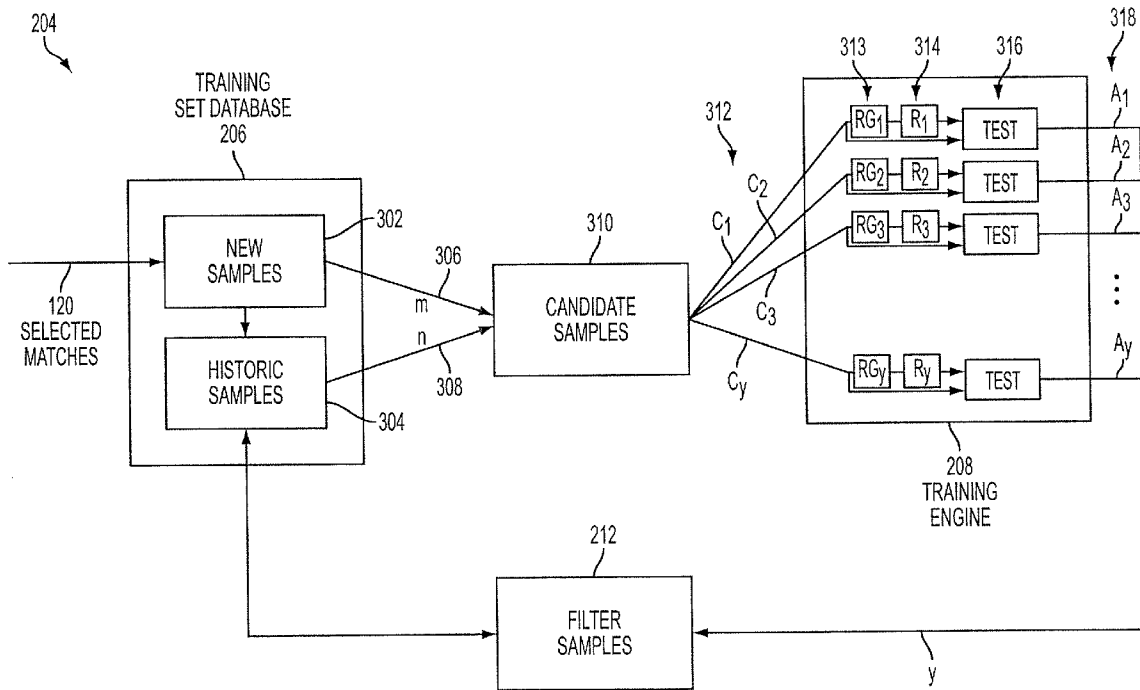
(58) **Field of Classification Search** None
See application file for complete search history.

(56) **References Cited**

U.S. PATENT DOCUMENTS

5,369,577 A * 11/1994 Kadashevich et al. 704/9

16 Claims, 5 Drawing Sheets



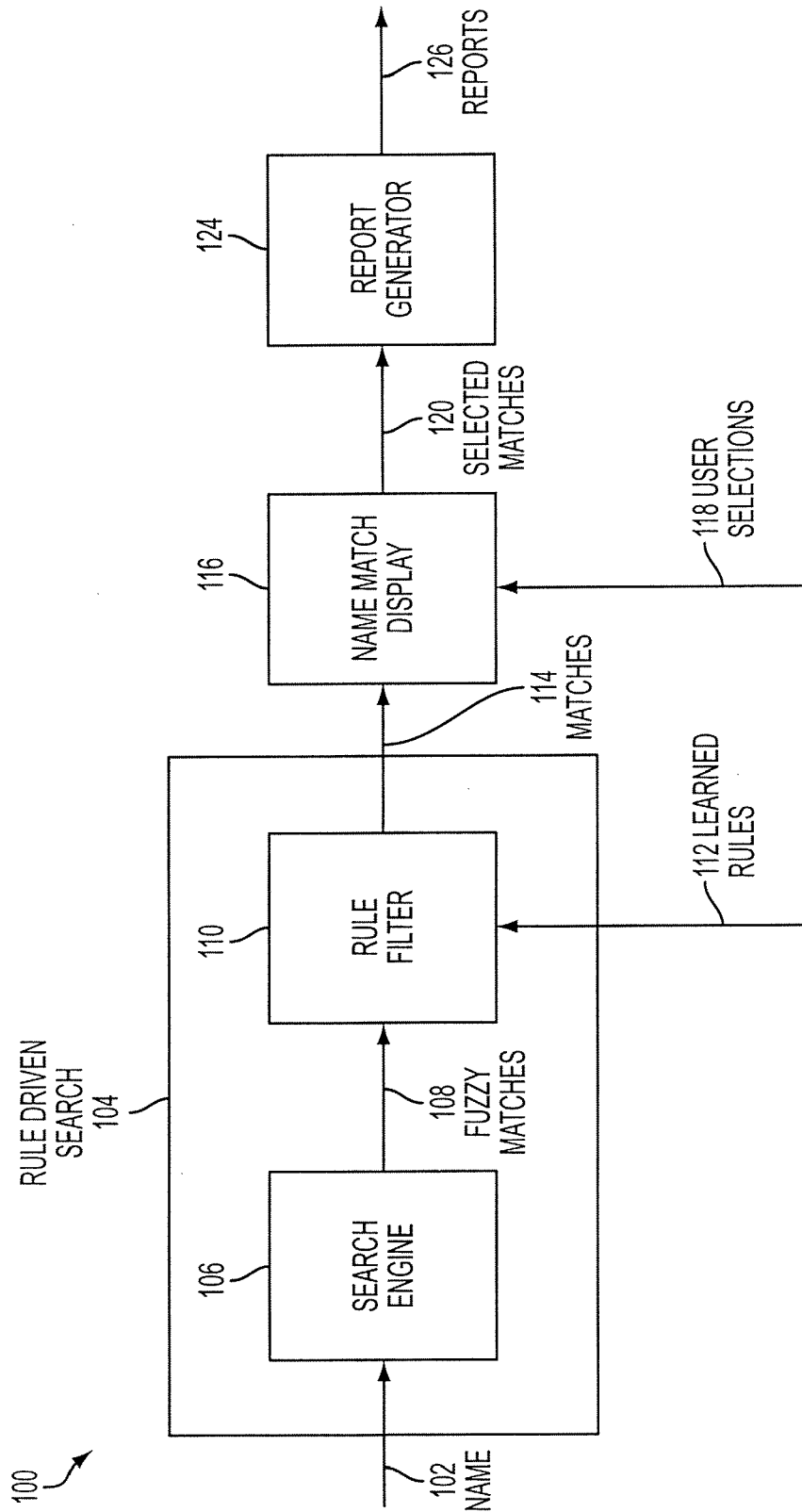


FIG. 1

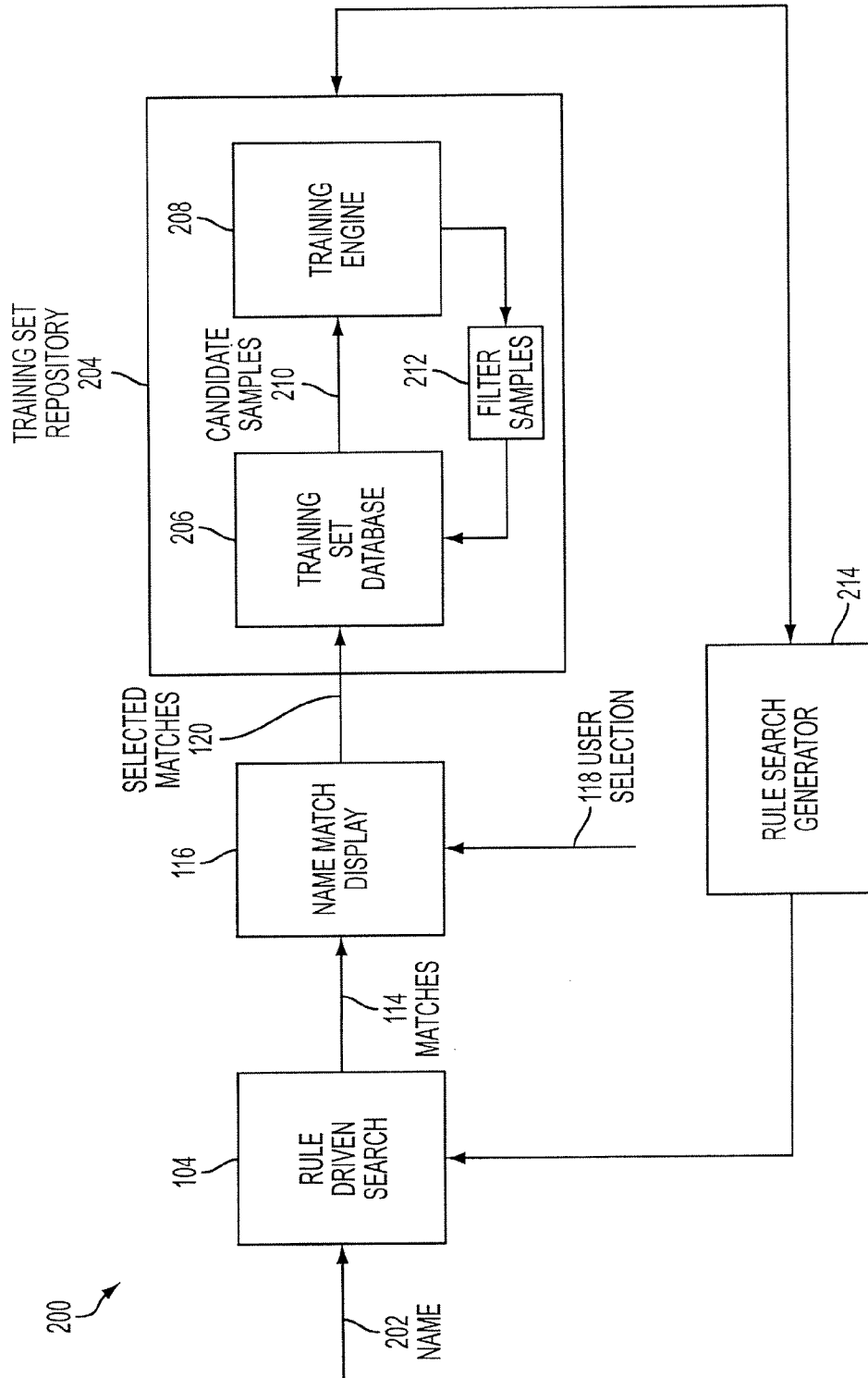


FIG. 2

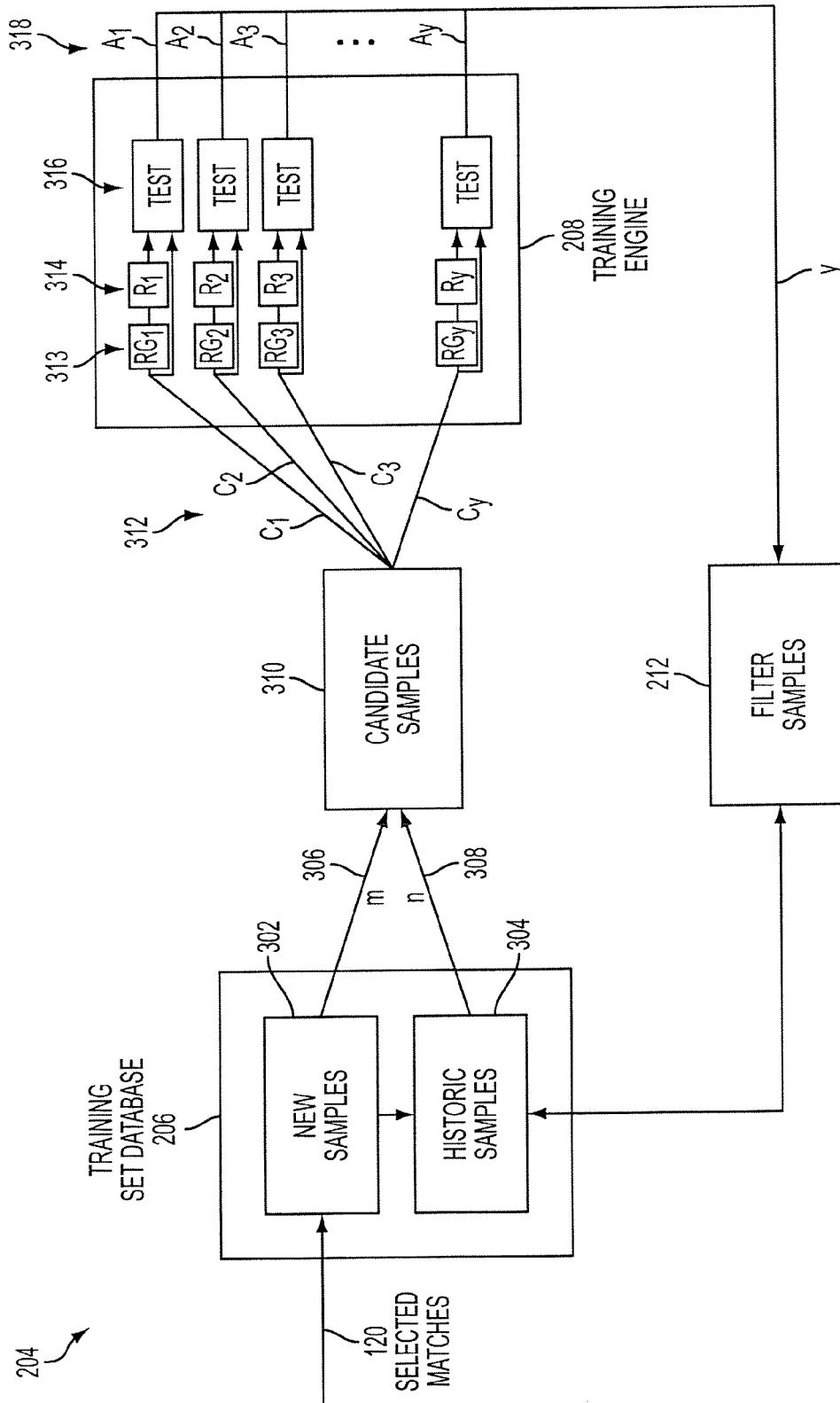


FIG. 3

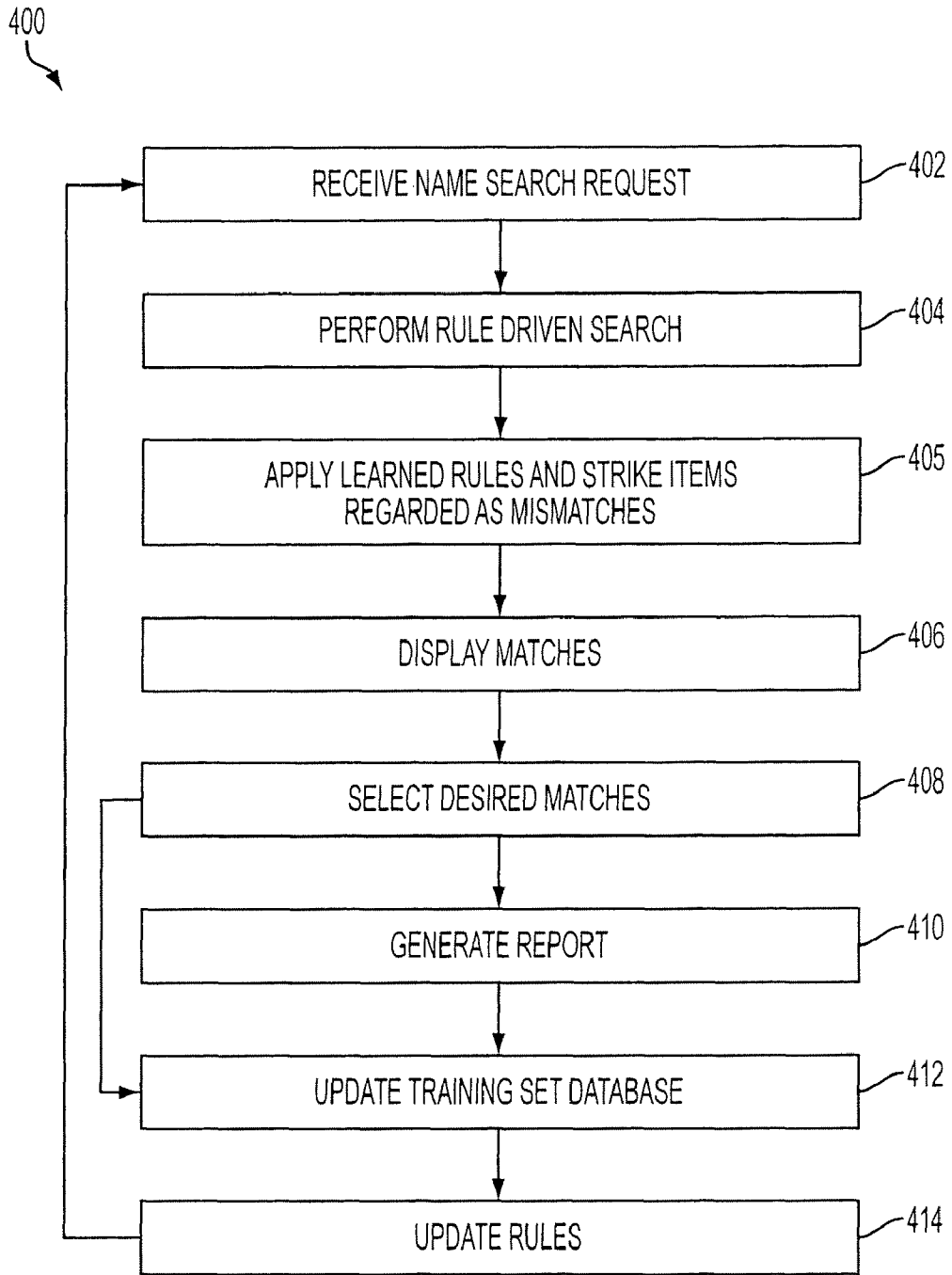


FIG. 4

Explore Litigation Insights

Docket Alarm provides insights to develop a more informed litigation strategy and the peace of mind of knowing you're on top of things.

Real-Time Litigation Alerts



Keep your litigation team up-to-date with **real-time alerts** and advanced team management tools built for the enterprise, all while greatly reducing PACER spend.

Our comprehensive service means we can handle Federal, State, and Administrative courts across the country.

Advanced Docket Research



With over 230 million records, Docket Alarm's cloud-native docket research platform finds what other services can't. Coverage includes Federal, State, plus PTAB, TTAB, ITC and NLRB decisions, all in one place.

Identify arguments that have been successful in the past with full text, pinpoint searching. Link to case law cited within any court document via Fastcase.

Analytics At Your Fingertips



Learn what happened the last time a particular judge, opposing counsel or company faced cases similar to yours.

Advanced out-of-the-box PTAB and TTAB analytics are always at your fingertips.

API

Docket Alarm offers a powerful API (application programming interface) to developers that want to integrate case filings into their apps.

LAW FIRMS

Build custom dashboards for your attorneys and clients with live data direct from the court.

Automate many repetitive legal tasks like conflict checks, document management, and marketing.

FINANCIAL INSTITUTIONS

Litigation and bankruptcy checks for companies and debtors.

E-DISCOVERY AND LEGAL VENDORS

Sync your system to PACER to automate legal marketing.