



[54] SYSTEM FOR EVALUATING BAR CODE QUALITY ON MAIL PIECES

[76] Inventors: Christopher A. Baker, 8732 Cottontail La., Battleground, Ind. 47920; Peter N. Baker, 932 N. Southland Dr., Lafayette, Ind. 47905

[21] Appl. No.: 611,777

[22] Filed: Mar. 6, 1996

[51] Int. Cl.⁶ G06K 7/10; G06K 9/00

[52] U.S. Cl. 382/101; 209/272; 235/462

[58] Field of Search 382/100, 101, 382/102; 209/272, 900; 235/462

[56] References Cited

U.S. PATENT DOCUMENTS

4,606,660 8/1986 Bradshaw et al. 400/62
4,632,252 12/1986 Haruki et al. 209/546
4,641,347 2/1987 Clark et al. 35/101
4,660,221 4/1987 Dlugos 380/23
4,688,678 8/1987 Zue et al. 209/552
5,073,954 12/1991 Van Tyne et al. 382/18
5,142,482 8/1992 Sansone 364/478
5,216,620 6/1993 Sansone 364/478
5,249,687 10/1993 Rosenbaum et al. 209/3.3
5,293,431 3/1994 Hayduchok et al. 382/101
5,311,597 5/1994 Rosenbaum 382/101
5,387,783 2/1995 Mihm et al. 235/375
5,422,821 6/1995 Allen et al. 364/478
5,431,288 7/1995 Nishijima et al. 209/584
5,446,667 8/1995 Oh et al. 364/464.02
5,454,038 9/1995 Cordery et al. 380/23

5,475,603 12/1995 Korowotny 364/478
5,485,000 1/1996 Schneider 235/494
5,548,110 8/1996 Storch et al. 235/472
5,602,382 2/1997 Ulvr et al. 235/494
5,617,481 4/1997 Nakamura 382/101

OTHER PUBLICATIONS

Declaration of Christopher A. Baker Ser. No: 08/611,777.

Primary Examiner—Joseph Mancuso

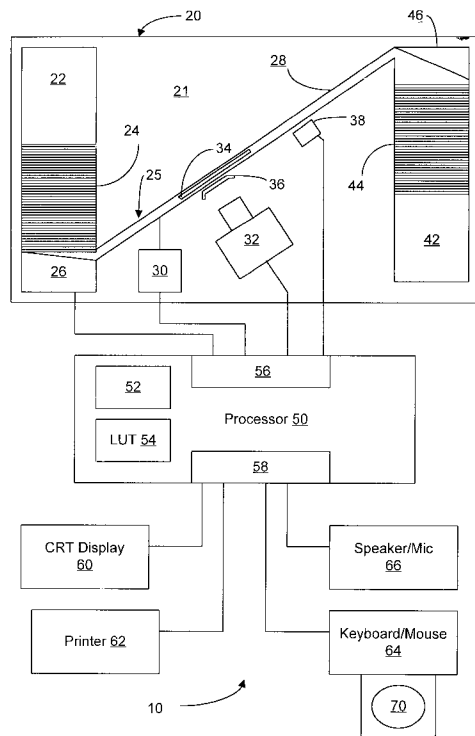
Assistant Examiner—Jayanti K. Patel

Attorney, Agent, or Firm—Woodward, Emhardt, Naughton Moriarty & McNett

[57] ABSTRACT

A system for evaluating barcoded mail which includes an imaging device to provide an image signal corresponding to an image of a barcode or an address of a mail piece. The system also includes an output device for providing evaluation results and a processor receiving the image signal from the imaging device. The processor generates an address information signal corresponding to the barcode and an address block image signal corresponding to the address. The processor provides an output signal to the output device in accordance with the address information signal and the address block image signal. The output device responds to the output signal to provide an address information image corresponding to the address information signal and an address block image corresponding to the address block image signal for visual comparison. The system also evaluates an image of a mail piece barcode to detect and categorize barcode defects for reporting with a visual facsimile of the barcode.

31 Claims, 9 Drawing Sheets



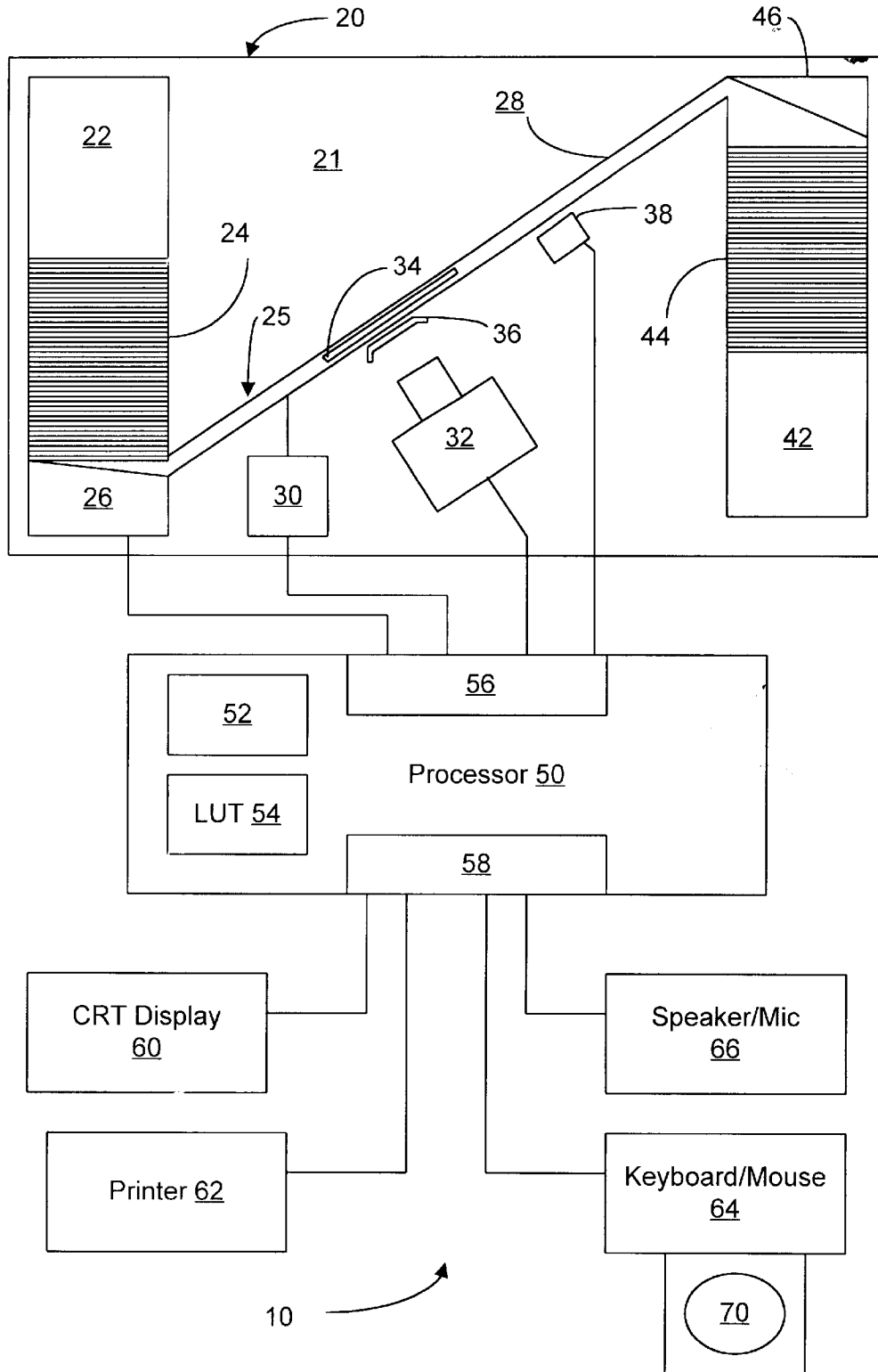


FIG. 1

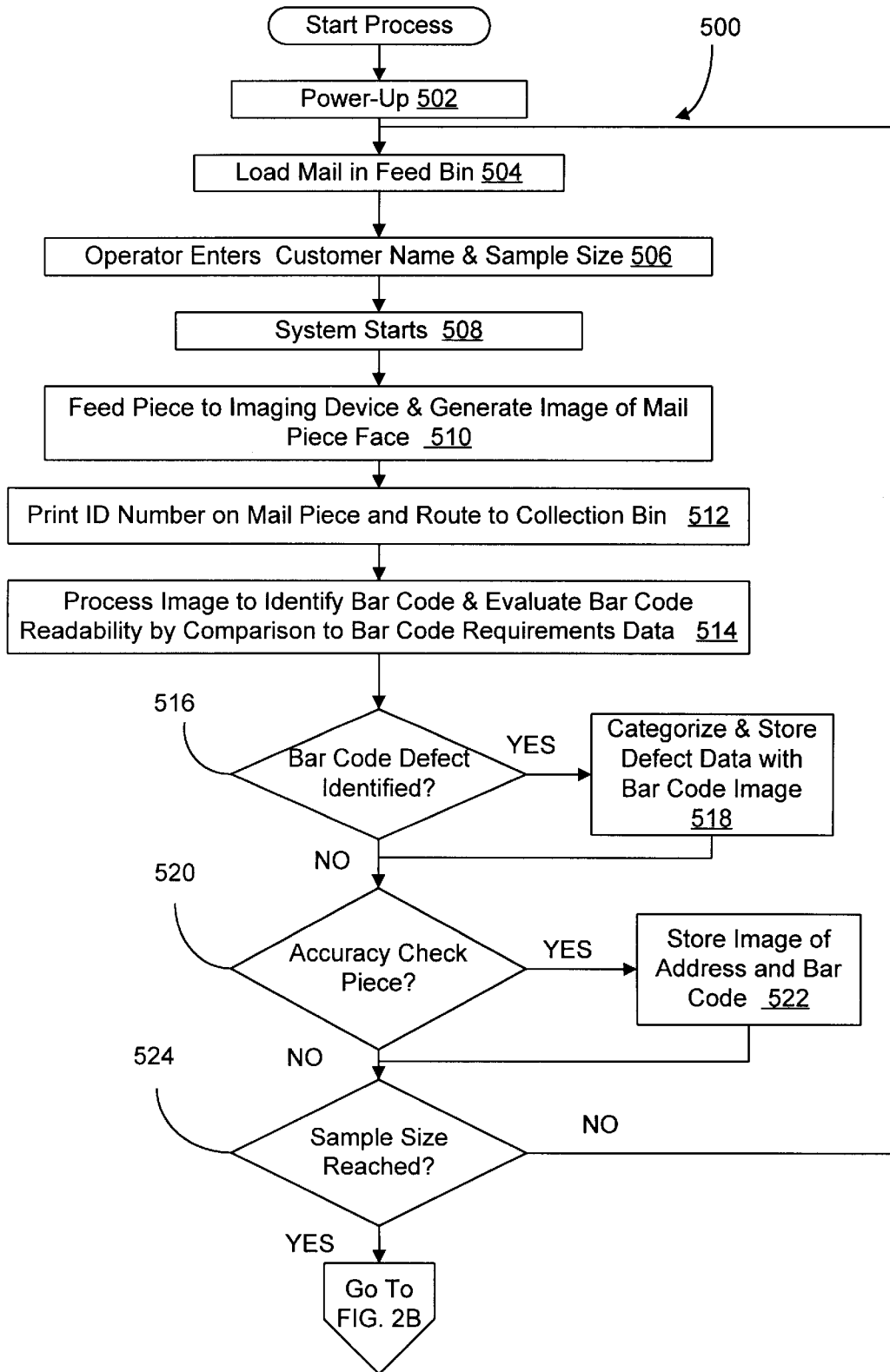


FIG. 2A

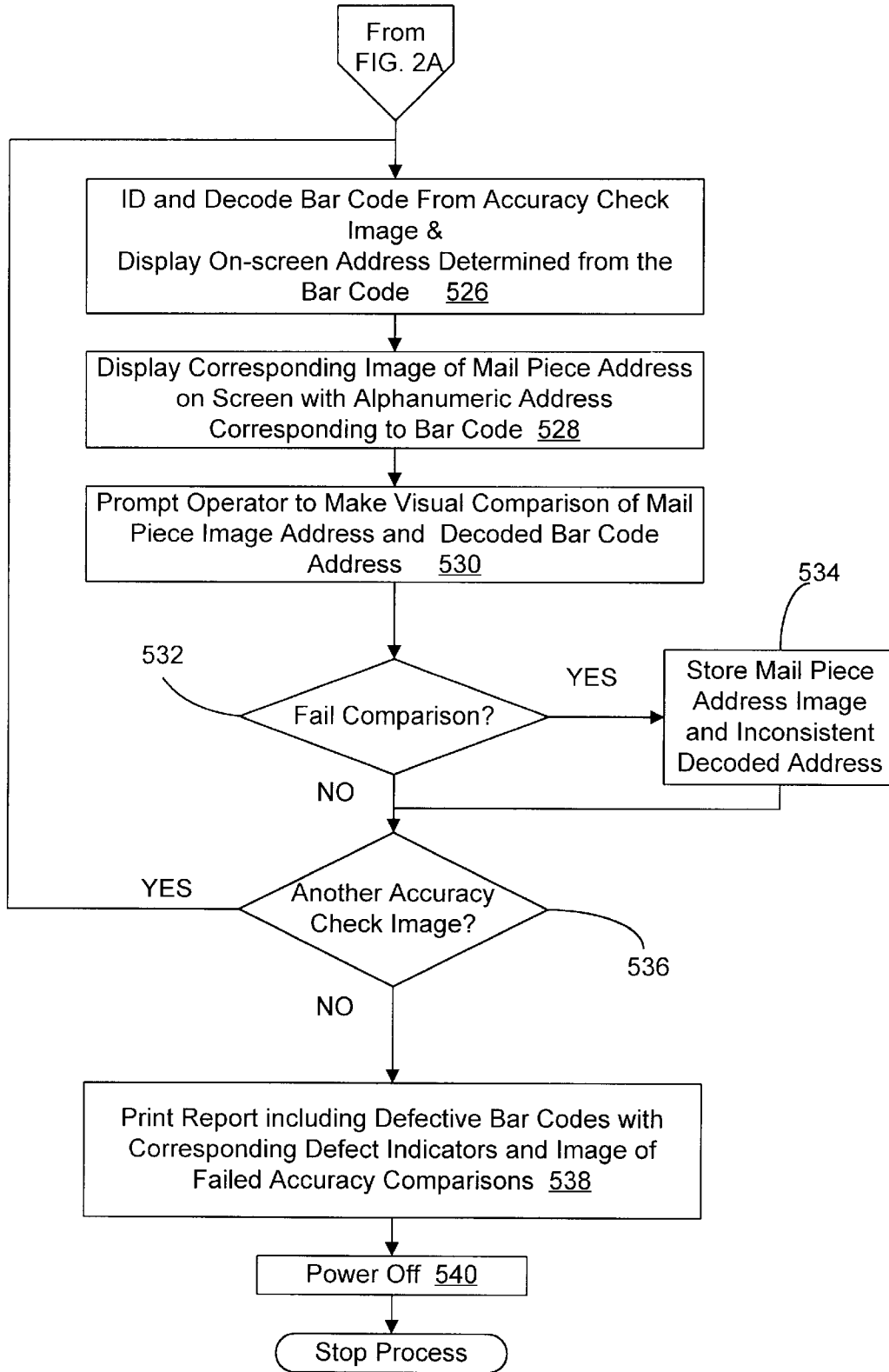


FIG. 2B

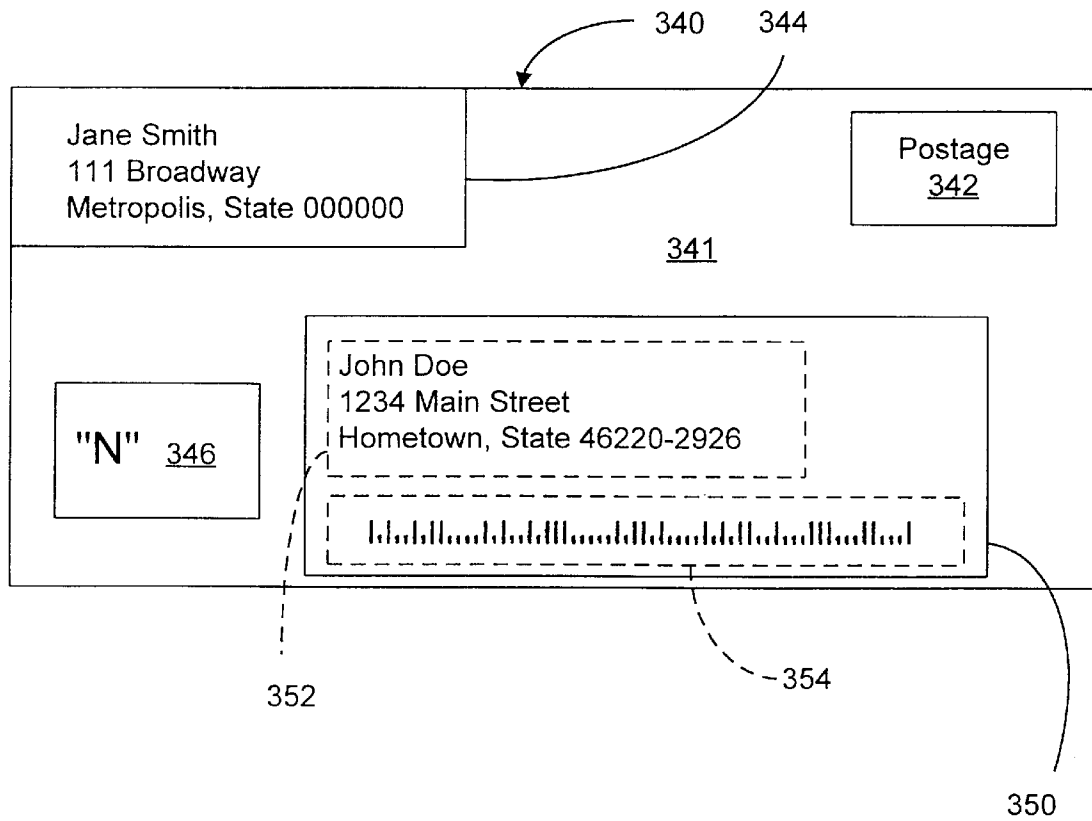


FIG. 3

Explore Litigation Insights

Docket Alarm provides insights to develop a more informed litigation strategy and the peace of mind of knowing you're on top of things.

Real-Time Litigation Alerts



Keep your litigation team up-to-date with **real-time alerts** and advanced team management tools built for the enterprise, all while greatly reducing PACER spend.

Our comprehensive service means we can handle Federal, State, and Administrative courts across the country.

Advanced Docket Research



With over 230 million records, Docket Alarm's cloud-native docket research platform finds what other services can't. Coverage includes Federal, State, plus PTAB, TTAB, ITC and NLRB decisions, all in one place.

Identify arguments that have been successful in the past with full text, pinpoint searching. Link to case law cited within any court document via Fastcase.

Analytics At Your Fingertips



Learn what happened the last time a particular judge, opposing counsel or company faced cases similar to yours.

Advanced out-of-the-box PTAB and TTAB analytics are always at your fingertips.

API

Docket Alarm offers a powerful API (application programming interface) to developers that want to integrate case filings into their apps.

LAW FIRMS

Build custom dashboards for your attorneys and clients with live data direct from the court.

Automate many repetitive legal tasks like conflict checks, document management, and marketing.

FINANCIAL INSTITUTIONS

Litigation and bankruptcy checks for companies and debtors.

E-DISCOVERY AND LEGAL VENDORS

Sync your system to PACER to automate legal marketing.