



US006833861B2

(12) **United States Patent**
Matsumoto et al.

(10) **Patent No.:** **US 6,833,861 B2**
(45) **Date of Patent:** **Dec. 21, 2004**

(54) **SYSTEM FOR TRANSFERRING IMAGE DATA FROM A CAMERA TO A PRINTING SYSTEM**

(75) Inventors: **Nobuo Matsumoto, Kanagawa (JP); Naoto Kinjo, Kanagawa (JP)**

(73) Assignee: **Fuji Photo Film Co., Ltd., Kanagawa (JP)**

(*) Notice: Subject to any disclaimer, the term of this patent is extended or adjusted under 35 U.S.C. 154(b) by 59 days.

(21) Appl. No.: **09/350,376**

(22) Filed: **Jul. 9, 1999**

(65) **Prior Publication Data**

US 2003/0174213 A1 Sep. 18, 2003

Related U.S. Application Data

(63) Continuation of application No. 09/350,376, filed on Jul. 9, 1999, which is a continuation of application No. 09/041,661, filed on Mar. 13, 1998, now abandoned.

(30) **Foreign Application Priority Data**

Mar. 25, 1997 (JP) 9-072008

(51) **Int. Cl.**⁷ **H04N 5/225; H04N 5/76**

(52) **U.S. Cl.** **348/207.2; 348/231.3**

(58) **Field of Search** 348/14.12, 207.2, 348/222, 231-233, 2, 333.01, 333.02, 333.05, 333.11, 333.12, 373, 375, 376, 552; 358/500, 501, 502, 505, 513, 527; 386/46, 95, 107, 108, 109, 112, 117, 118; 396/297, 299, 300

(56) **References Cited**

U.S. PATENT DOCUMENTS

5,194,892 A * 3/1993 Robison 355/40

5,296,884 A *	3/1994	Honda	396/311
5,477,353 A	12/1995	Yamasaki	358/487
5,479,228 A *	12/1995	Tamamura	396/319
5,488,558 A *	1/1996	Ohki	701/207
5,512,396 A	4/1996	Hicks	430/21
5,574,533 A	11/1996	Itoh	396/639
5,606,365 A *	2/1997	Maurinus	348/222
5,625,411 A *	4/1997	Inuiya	348/220.1
5,666,578 A *	9/1997	Oikawa	396/319
5,754,227 A	5/1998	Fukuoka	348/232
5,757,388 A	5/1998	Stephenson	347/2
5,768,633 A *	6/1998	Allen	396/2
5,798,738 A	8/1998	Yamada	345/2.3
5,799,219 A *	8/1998	Moghadam	396/319
5,806,005 A *	9/1998	Hull	348/14.12
5,926,285 A *	7/1999	Takahashi	358/296
6,000,864 A *	12/1999	Hanada	400/62
6,011,547 A *	1/2000	Shiota	382/254
6,018,774 A *	1/2000	Mayle	709/250
6,069,712 A *	5/2000	Dellert	358/408
6,133,947 A *	10/2000	Mikuni	348/143
6,141,482 A *	10/2000	Massarksy	386/118
2003/0025808 A1 *	2/2003	Parulski et al.	348/231.99

* cited by examiner

Primary Examiner—Ngoc-Yen Vu

(74) *Attorney, Agent, or Firm*—Sughrue Mion, PLLC

(57) **ABSTRACT**

A digital still camera is provided with a data communication section which transfers image data of a picture frame photographed by the digital still camera to a printing equipment through a radio telephony channel each time the picture frame is photographed. The data communication section sends ID data consisting of a user ID number and a frame ID number and print order data as along with the image data. In the printing equipment, the received image data and ID data is stored as database in a memory. Based on the image data read from the database, a printer makes hard copies in conditions designated by the print order data. The hard copies are delivered to a place appointed by the print order data.

18 Claims, 5 Drawing Sheets

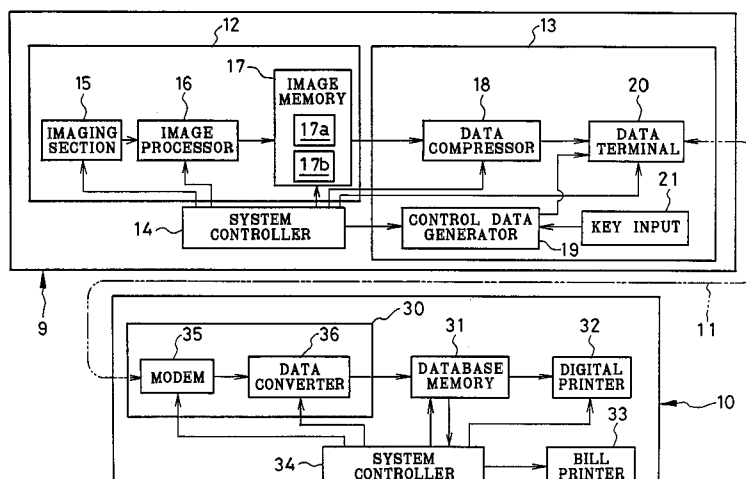


FIG. 1

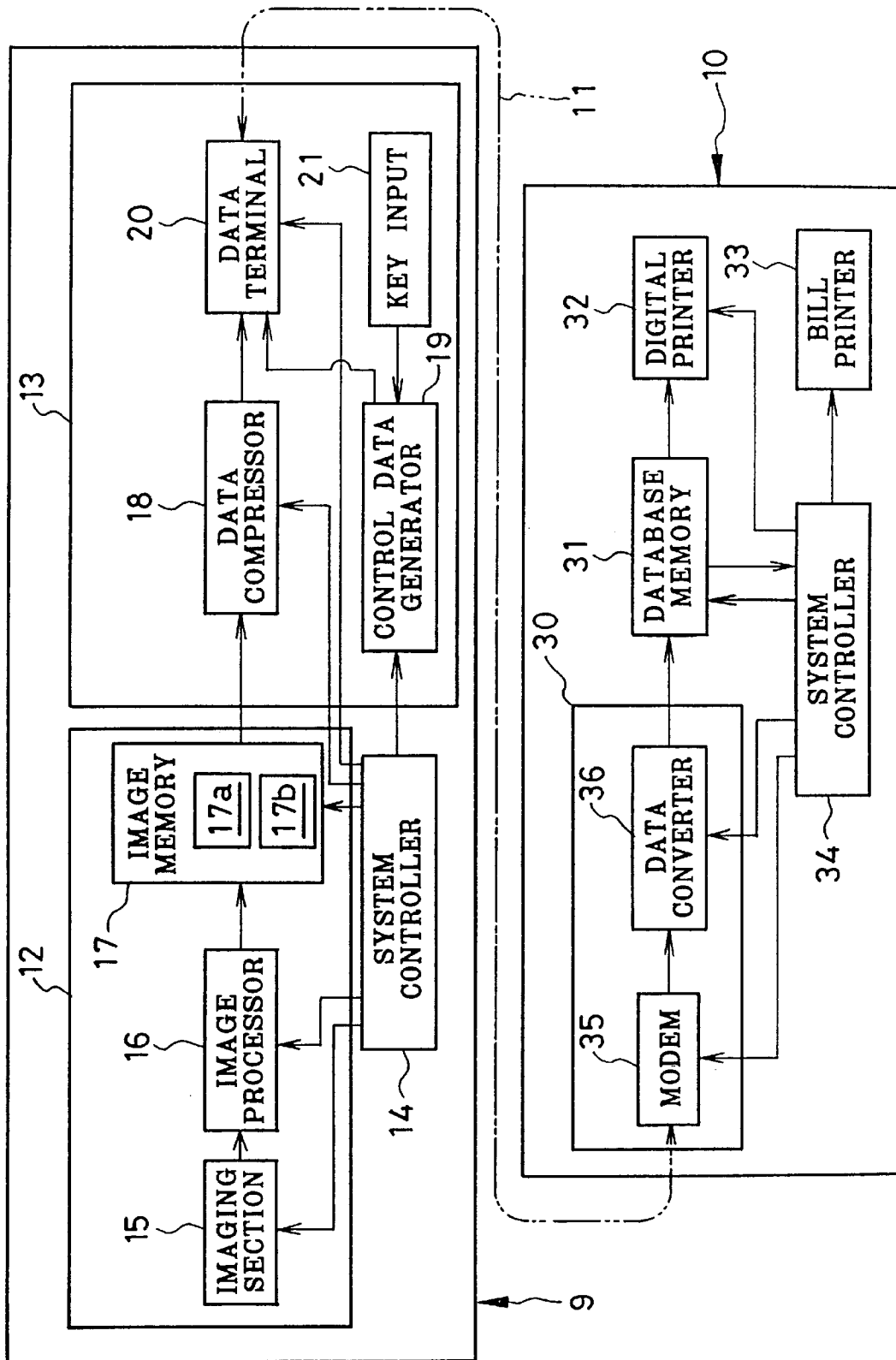


FIG. 2

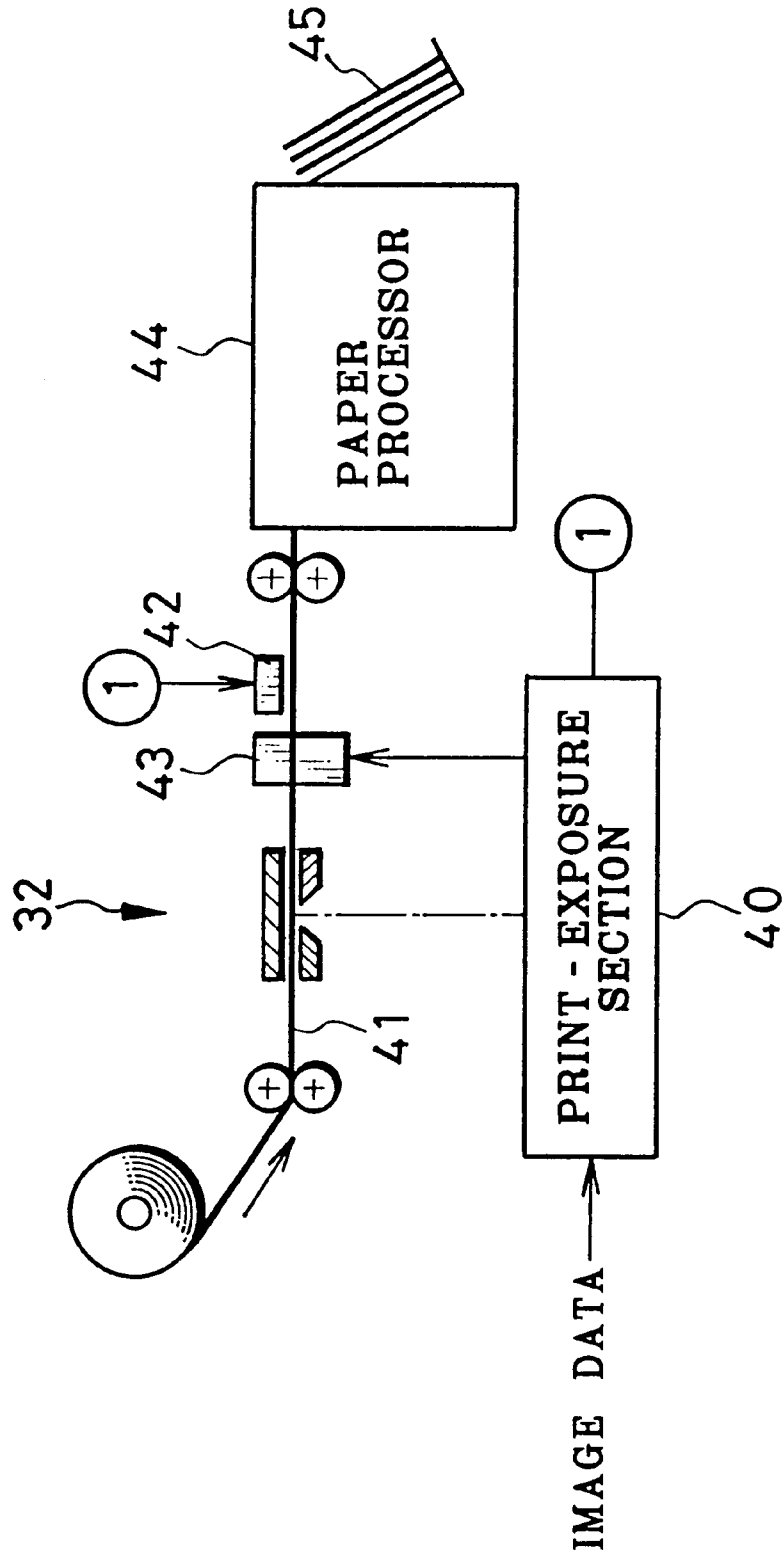


FIG. 3

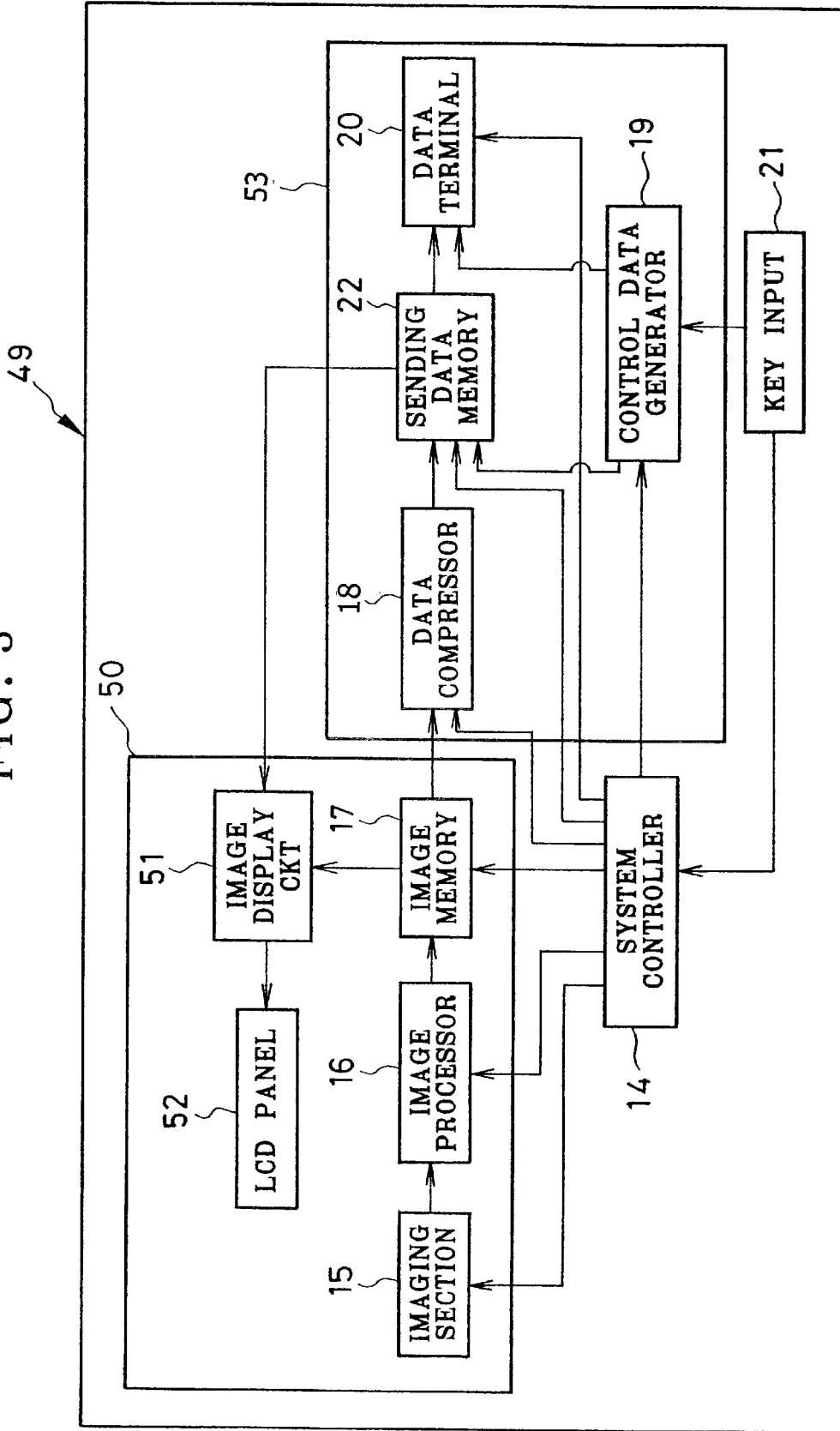
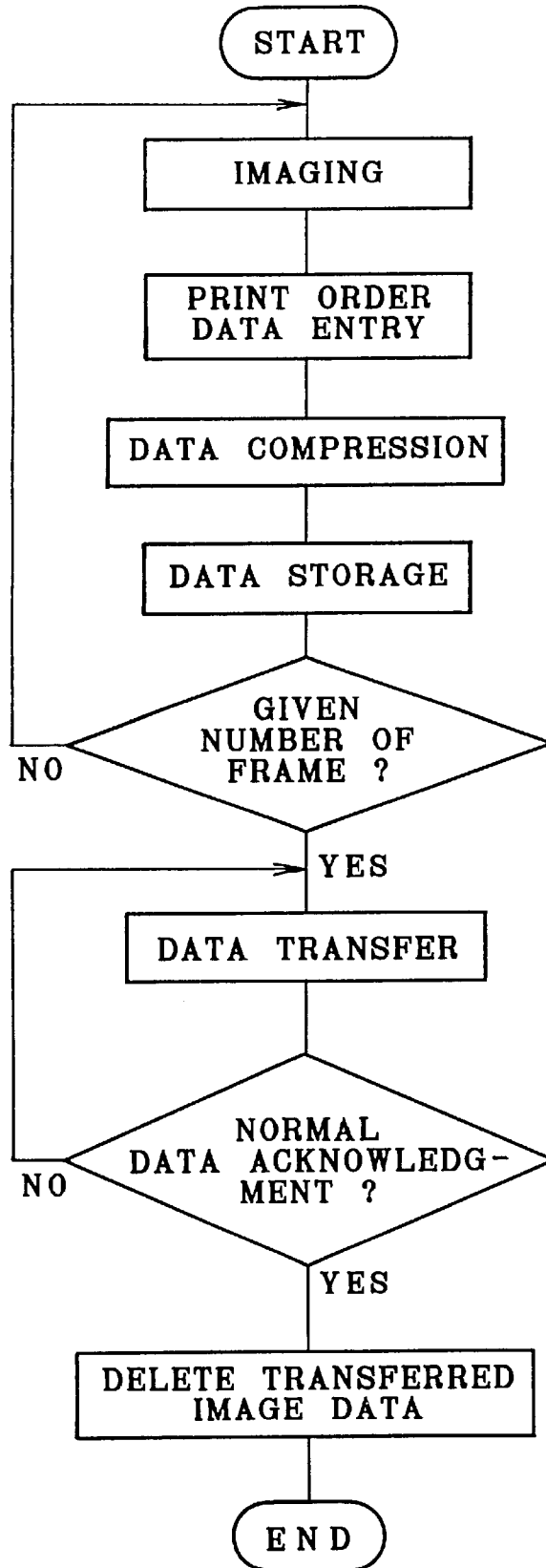


FIG. 4



Explore Litigation Insights

Docket Alarm provides insights to develop a more informed litigation strategy and the peace of mind of knowing you're on top of things.

Real-Time Litigation Alerts



Keep your litigation team up-to-date with **real-time alerts** and advanced team management tools built for the enterprise, all while greatly reducing PACER spend.

Our comprehensive service means we can handle Federal, State, and Administrative courts across the country.

Advanced Docket Research



With over 230 million records, Docket Alarm's cloud-native docket research platform finds what other services can't. Coverage includes Federal, State, plus PTAB, TTAB, ITC and NLRB decisions, all in one place.

Identify arguments that have been successful in the past with full text, pinpoint searching. Link to case law cited within any court document via Fastcase.

Analytics At Your Fingertips



Learn what happened the last time a particular judge, opposing counsel or company faced cases similar to yours.

Advanced out-of-the-box PTAB and TTAB analytics are always at your fingertips.

API

Docket Alarm offers a powerful API (application programming interface) to developers that want to integrate case filings into their apps.

LAW FIRMS

Build custom dashboards for your attorneys and clients with live data direct from the court.

Automate many repetitive legal tasks like conflict checks, document management, and marketing.

FINANCIAL INSTITUTIONS

Litigation and bankruptcy checks for companies and debtors.

E-DISCOVERY AND LEGAL VENDORS

Sync your system to PACER to automate legal marketing.