

**SONY**<sup>®</sup>

3-865-674-11 (1)

# *FM/MW/LW Cassette Car Stereo*

---

Operating Instructions _____	<b>GB</b>
Manual de instrucciones _____	<b>ES</b>
Bruksanvisning _____	<b>SE</b>
Manual de instruções _____	<b>PT</b>

For installation and connections, see the supplied installation/connections manual.

Para obtener información sobre la instalación y las conexiones, consulte el manual de instalación/conexiones suministrado.

Vi hänvisar till det medföljande häftet angående montering/anslutningar.

Para a instalação e as ligações, consulte o manual de instalação/ligações fornecido.

*XR-C5120R  
XR-C5110R  
XR-C4120*

© 1999 by Sony Corporation

---

## Welcome !

Thank you for purchasing this Sony Cassette Player. This unit lets you enjoy a variety of features as well as a rotary commander (supplied for XR-C4120, optional for XR-C5120R/C5110R).

In addition to the cassette playback and radio operations, you can expand your system by connecting an optional CD/MD unit\*<sup>1</sup>.

When you operate this unit or a connected optional CD unit with the CD TEXT function, the CD TEXT information will appear in the display when you play a CD TEXT disc\*<sup>2</sup>.

\*<sup>1</sup> You can connect a CD changer, an MD changer, a CD player, or an MD player.

\*<sup>2</sup> A CD TEXT disc is an audio CD that includes information such as the disc name, artist name, and track names.  
This information is recorded on the disc.

---

## Table of Contents

### This Unit Only

Location of controls ..... 3

### Getting Started

Resetting the unit ..... 4  
Detaching the front panel ..... 4  
Setting the clock ..... 5

### Cassette Player

Listening to a tape ..... 6  
Playing a tape in various modes ..... 7

### Radio

Memorizing stations automatically  
— Best Tuning Memory (BTM) ..... 7  
Memorizing only the desired stations ..... 8  
Receiving the memorized stations ..... 8

### RDS (XR-C5120R/C5110R only)

Overview of the RDS function ..... 9  
Displaying the station name ..... 9  
Retuning the same programme automatically  
— Alternative Frequencies (AF) ..... 9  
Listening to traffic announcements ..... 11  
Presetting the RDS stations with the AF  
and TA data ..... 11  
Locating a station by programme type ..... 12  
Setting the clock automatically ..... 13

### Other Functions

Labelling the rotary commander ..... 14  
Using the rotary commander ..... 14  
Adjusting the sound characteristics ..... 16  
Attenuating the sound ..... 16  
Changing the sound and display settings ..... 16  
Boosting the bass sound  
— D-bass ..... 17

### With Optional Equipment

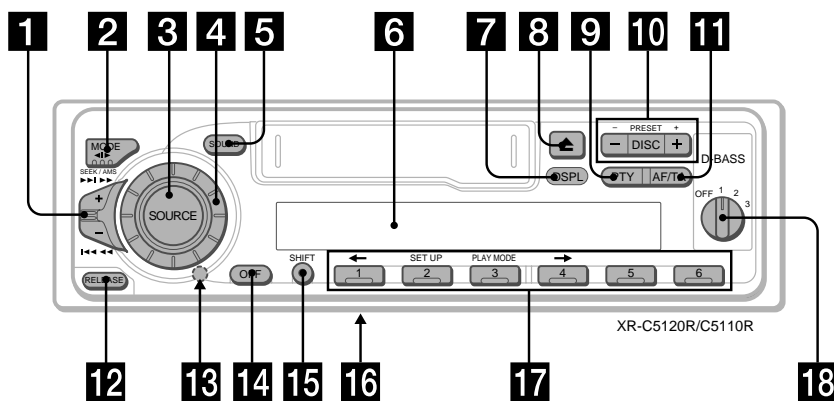
#### CD/MD Unit

Playing a CD or MD ..... 18  
Playing tracks repeatedly  
— Repeat Play ..... 19  
Playing tracks in random order  
— Shuffle Play ..... 19

### Additional Information

Precautions ..... 20  
Maintenance ..... 21  
Dismounting the unit ..... 21  
Specifications ..... 22  
Troubleshooting guide ..... 23

## Location of controls



Refer to the pages listed for details.

- 1** SEEK/AMS (seek/Automatic Music Sensor/manual search) control  
6, 8, 10, 13, 19
- 2** MODE (◀▶) button  
During tape playback:  
Playback direction change 6  
During radio reception:  
BAND select 7, 8  
During CD or MD playback:  
CD/MD unit select 18
- 3** SOURCE (TAPE/TUNER/CD/MD) button  
6, 7, 8, 11, 18
- 4** Dial (volume/bass/treble/left-right/rear-front control) 5, 16
- 5** SOUND button 16
- 6** Display window
- 7** DSPL (display mode change) button  
6, 8, 9, 18
- 8** ▲ (eject) button 6
- 9** PTY button (XR-C5120R/C5110R only)  
RDS Programme 13
- 10** PRESET/DISC button  
During radio reception:  
Preset stations select 8  
During CD/MD playback:  
Disc change 19
- 11** AF/TA button (XR-C5120R/C5110R only)  
9, 10, 11, 12
- 12** RELEASE (front panel release) button  
4, 21
- 13** Reset button (located on the front side of the unit behind the front panel) 4
- 14** OFF button 4, 6
- 15** SHIFT button  
PLAY MODE 7, 8, 10, 12, 19  
SET UP 5, 13, 16, 18
- 16** POWERSELECT switch  
(located on the bottom of the unit)  
See "POWER SELECT switch" in the Installation/Connections manual.
- 17** Number buttons 8, 10, 12
- 18** D-BASS control 17

## Getting Started

### Resetting the unit

Before operating the unit for the first time or after replacing the car battery, you must reset the unit.

Remove the front panel and press the reset button with a pointed object, such as a ballpoint pen.



Reset button

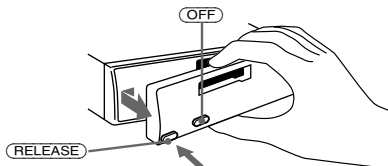
#### Note

Pressing the reset button will erase the clock setting and some memorized functions.

### Detaching the front panel

You can detach the front panel of this unit to protect the unit from being stolen.

- 1 Press **OFF**.
- 2 Press **RELEASE**, then slide the front panel a little to the left, and pull it off towards you.

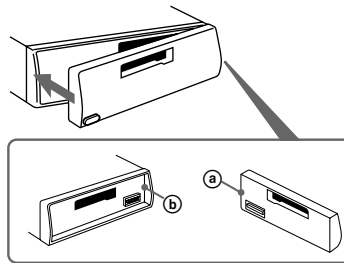


#### Notes

- Be sure not to drop the panel when detaching it from the unit.
- If you detach the panel while the unit is still turned on, the power will turn off automatically to prevent the speakers from being damaged.
- When carrying the front panel with you, use the supplied front panel case.

### Attaching the front panel

Attach part **(a)** of the front panel to part **(b)** of the unit as illustrated and push the left side into position until it clicks.



#### Notes

- Be sure not to attach the front panel upside down.
- Do not press the front panel too hard against the unit when attaching it.
- Do not press too hard or put excessive pressure on the display window of the front panel.
- Do not expose the front panel to direct sunlight or heat sources such as hot air ducts, and do not leave it in a humid place. Never leave it on the dashboard of a car parked in direct sunlight or where there may be a considerable rise in temperature.

### Caution alarm

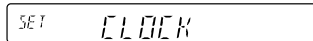
If you turn the ignition key switch to the OFF position without removing the front panel, the caution alarm will beep for a few seconds (only when the POWER SELECT switch on the bottom of the unit is set to the **(A)** position). If you connect an optional power amplifier and do not use the built-in amplifier, the beep sound will be deactivated.

## Setting the clock

The clock uses a 24-hour digital indication.

Example: To set the clock to 10:08

- 1 Press **(SHIFT)**, then press **(2)** (SET UP) repeatedly until "CLOCK" appears.



- 1 Press **(4)** (→).



The hour indication flashes.

- 2 Set the hour.



- 3 Press **(4)** (→).

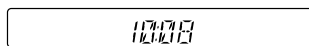


The minute indication flashes.

- 4 Set the minute.



- 2 Press **(SHIFT)**.



The clock starts.

- 3 Press **(SHIFT)**.  
After the clock setting is complete, the display returns to normal playback mode.

*Note*  
If the POWER SELECT switch on the bottom of the unit is set to the **(B)** position, turn the power on first, then set the clock.



# Explore Litigation Insights

Docket Alarm provides insights to develop a more informed litigation strategy and the peace of mind of knowing you're on top of things.

## Real-Time Litigation Alerts



Keep your litigation team up-to-date with **real-time alerts** and advanced team management tools built for the enterprise, all while greatly reducing PACER spend.

Our comprehensive service means we can handle Federal, State, and Administrative courts across the country.

## Advanced Docket Research



With over 230 million records, Docket Alarm's cloud-native docket research platform finds what other services can't. Coverage includes Federal, State, plus PTAB, TTAB, ITC and NLRB decisions, all in one place.

Identify arguments that have been successful in the past with full text, pinpoint searching. Link to case law cited within any court document via Fastcase.

## Analytics At Your Fingertips



Learn what happened the last time a particular judge, opposing counsel or company faced cases similar to yours.

Advanced out-of-the-box PTAB and TTAB analytics are always at your fingertips.

## API

Docket Alarm offers a powerful API (application programming interface) to developers that want to integrate case filings into their apps.

## LAW FIRMS

Build custom dashboards for your attorneys and clients with live data direct from the court.

Automate many repetitive legal tasks like conflict checks, document management, and marketing.

## FINANCIAL INSTITUTIONS

Litigation and bankruptcy checks for companies and debtors.

## E-DISCOVERY AND LEGAL VENDORS

Sync your system to PACER to automate legal marketing.