



US005732375A

# United States Patent [19]

[11] Patent Number: **5,732,375**

Cashler

[45] Date of Patent: **Mar. 24, 1998**

## [54] METHOD OF INHIBITING OR ALLOWING AIRBAG DEPLOYMENT

[75] Inventor: **Robert John Cashler, Kokomo, Ind.**  
[73] Assignee: **Delco Electronics Corp., Kokomo, Ind.**

5,474,327	12/1995	Schousek	180/268
5,494,311	2/1996	Blackburn et al.	280/735
5,570,301	10/1996	Barrus	364/559
5,570,903	11/1996	Meister et al.	280/735
5,605,348	2/1997	Blackburn et al.	280/735
5,612,876	3/1997	Zeidler et al.	364/424.055

[21] Appl. No.: **566,029**

[22] Filed: **Dec. 1, 1995**

[51] Int. Cl.<sup>6</sup> ..... **B60R 21/32; G06F 17/40**

[52] U.S. Cl. .... **701/45; 701/46; 180/273; 280/735**

[58] Field of Search ..... 364/424.055, 424.056, 364/424.057, 567, 568; 180/271, 282, 268, 273; 307/15.1; 340/436, 438; 280/735, 730.01, 730.02

## [56] References Cited

### U.S. PATENT DOCUMENTS

5,010,774	4/1991	Kiko et al.	73/862.042
5,161,820	11/1992	Vollmer	280/730.1
5,232,243	8/1993	Blackburn et al.	280/732
5,384,716	1/1995	Araki et al.	364/557
5,454,591	10/1995	Mazur et al.	280/735

## OTHER PUBLICATIONS

Research Disclosure—Jan. 1994 #357—“Method for Sensing Occupant Mass and Position.” Disclosed Anonymously.

Primary Examiner—Tan Q. Nguyen  
Attorney, Agent, or Firm—Mark A. Navarre

## [57] ABSTRACT

An array of pressure sensors on a vehicle passenger seat senses the presence of an occupant including an infant seat and determines whether the infant seat faces forward or rearward. A microprocessor coupled to the sensors determines whether to allow or inhibit deployment based on the sensor load forces and the pattern of loading. The pattern can identify an infant seat and pattern and loading determine its orientation. Local areas are checked to detect child occupants. Fuzzy logic is used to determine loading and to recognize patterns.

**19 Claims, 4 Drawing Sheets**

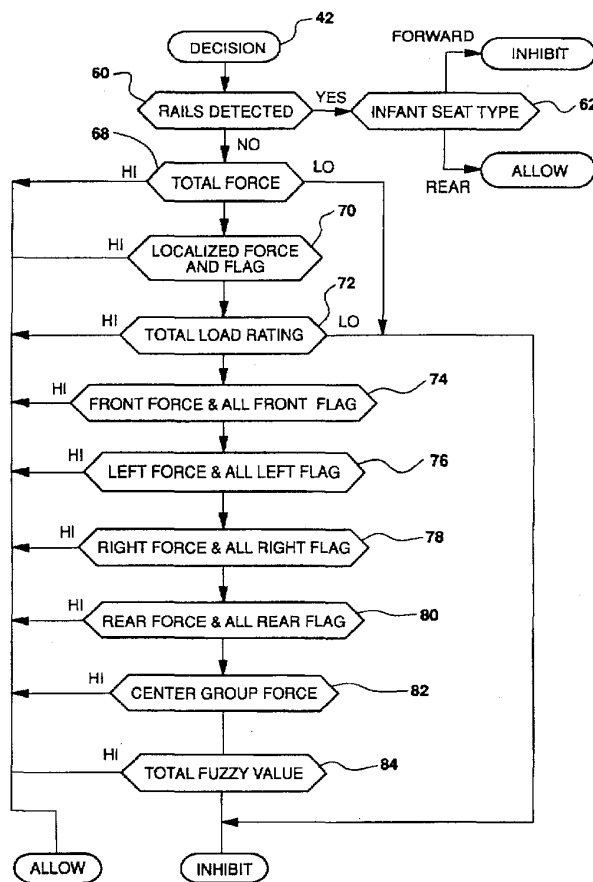


FIG - 1

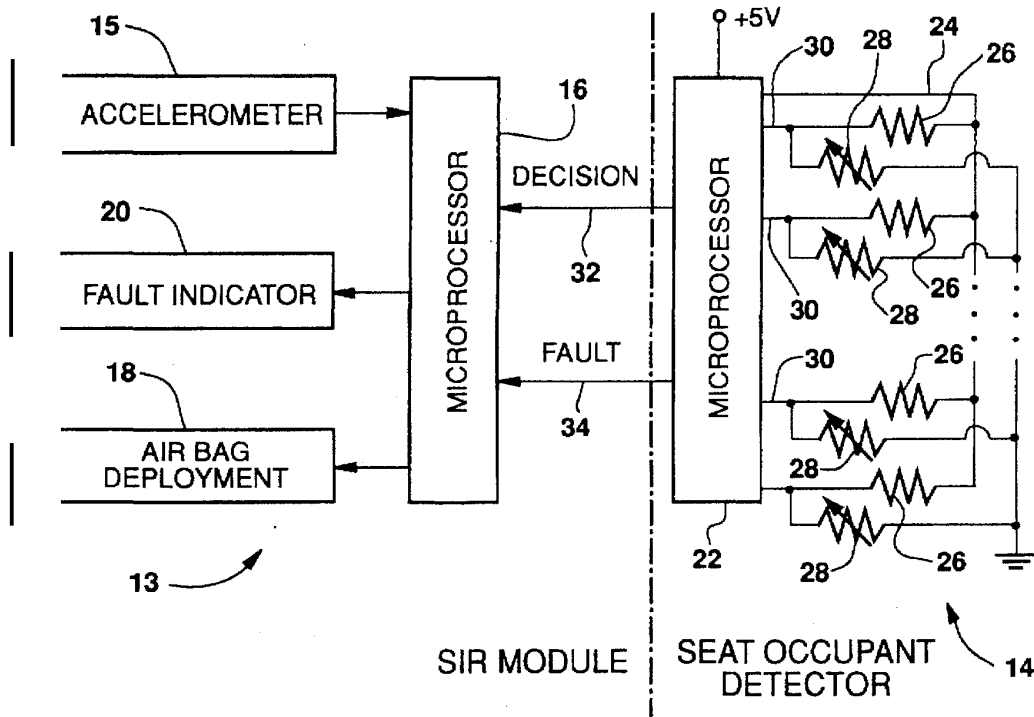
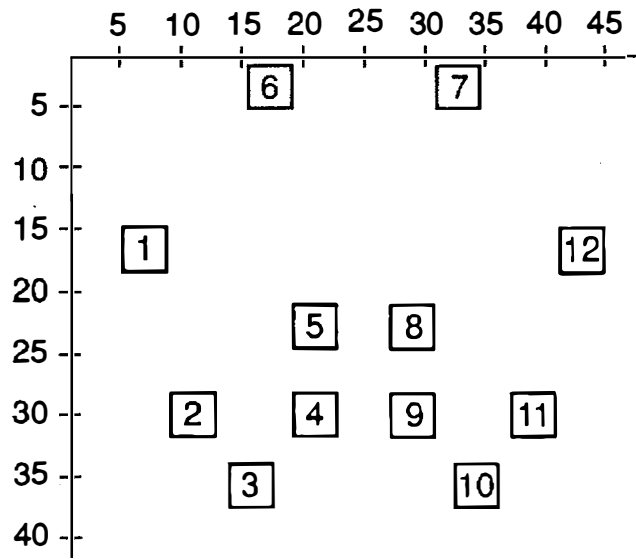
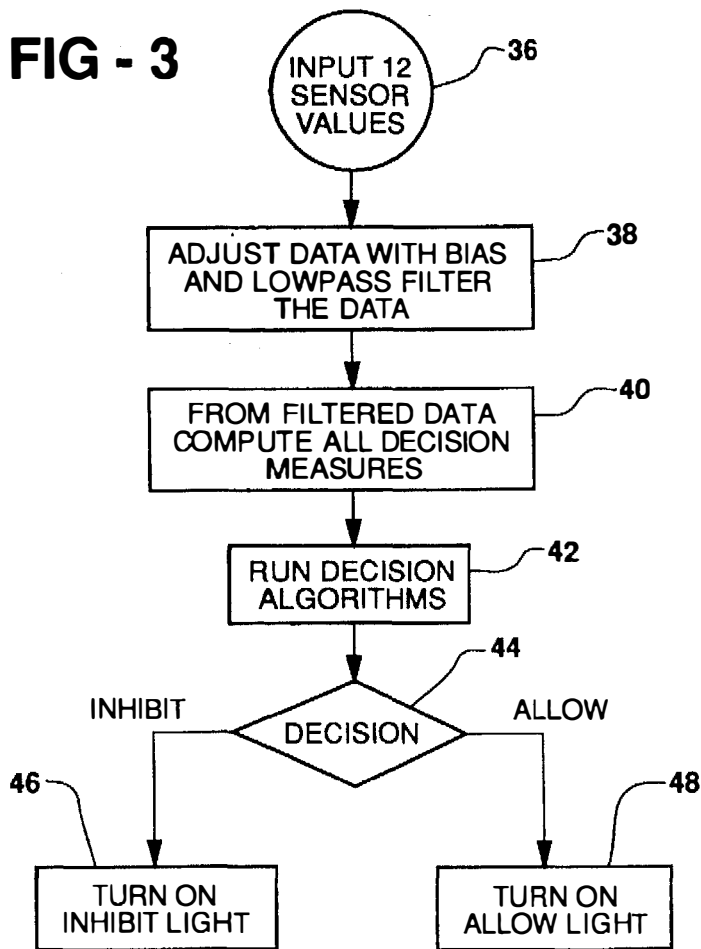


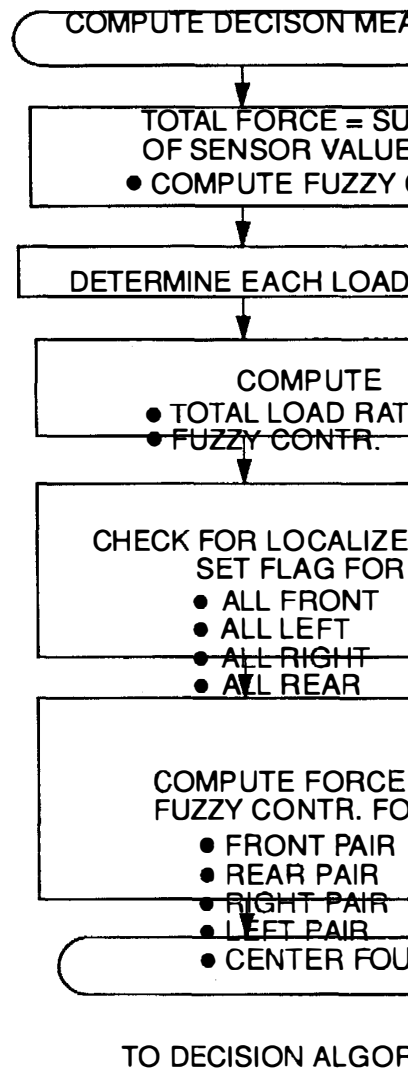
FIG - 2



**FIG - 3**



**FIG - 4**



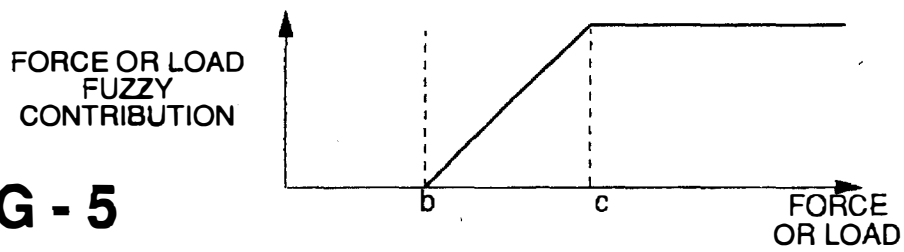


FIG - 5

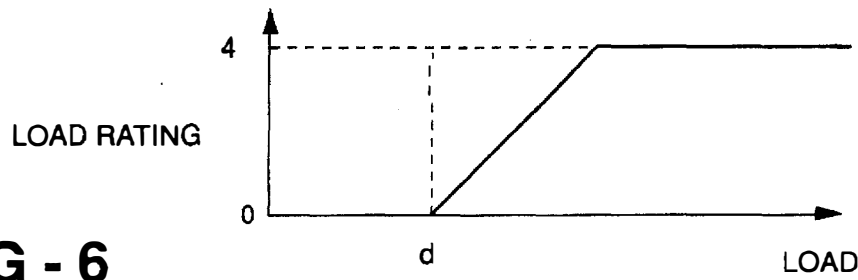


FIG - 6

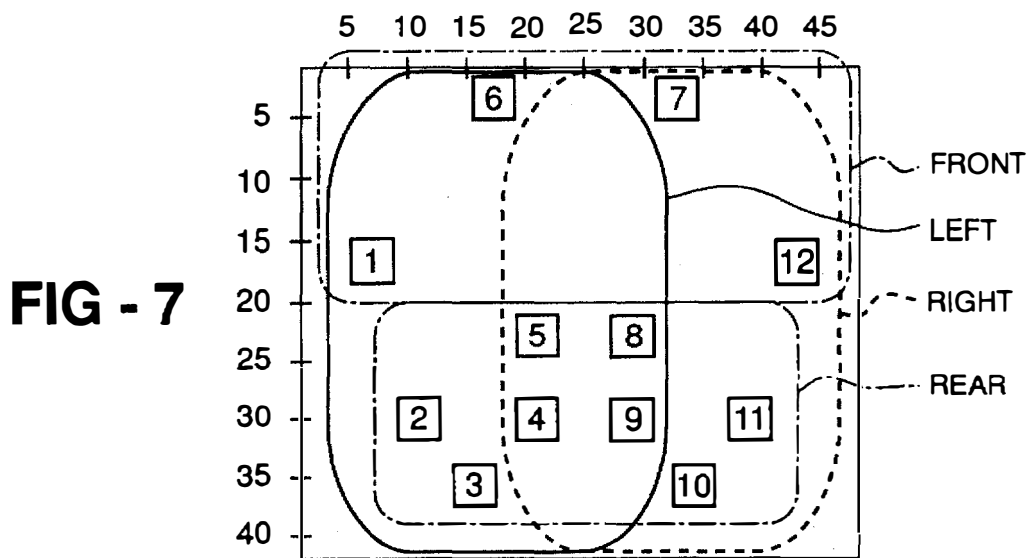


FIG - 7

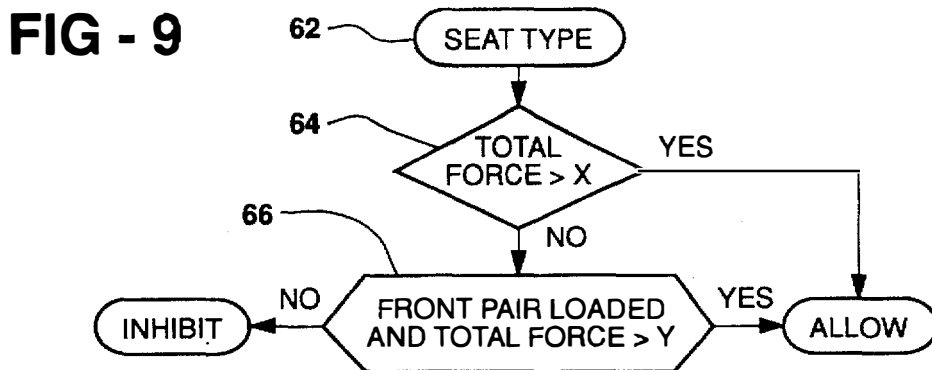


FIG - 9

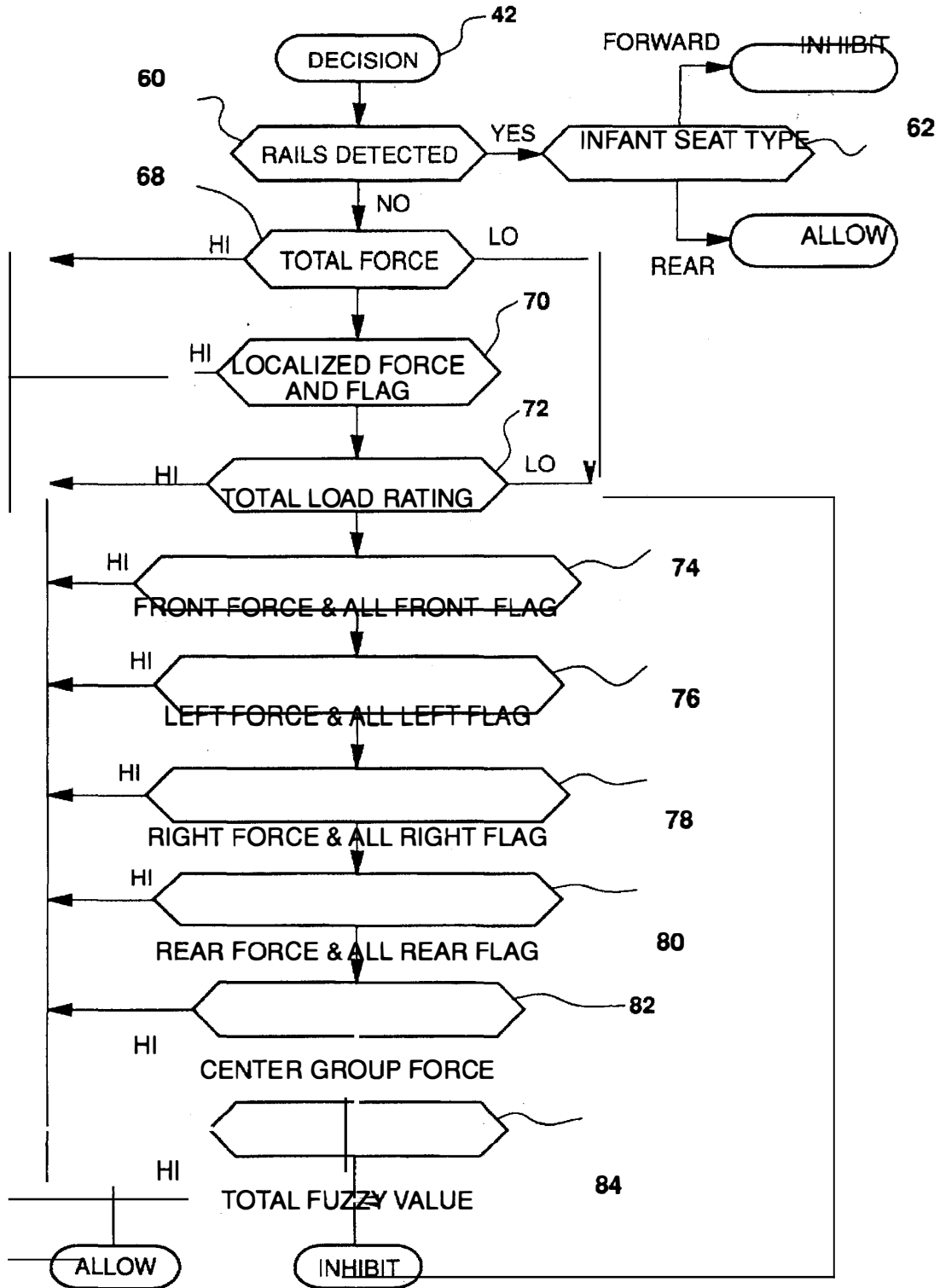


FIG - 8

# Explore Litigation Insights

Docket Alarm provides insights to develop a more informed litigation strategy and the peace of mind of knowing you're on top of things.

## Real-Time Litigation Alerts



Keep your litigation team up-to-date with **real-time alerts** and advanced team management tools built for the enterprise, all while greatly reducing PACER spend.

Our comprehensive service means we can handle Federal, State, and Administrative courts across the country.

## Advanced Docket Research



With over 230 million records, Docket Alarm's cloud-native docket research platform finds what other services can't. Coverage includes Federal, State, plus PTAB, TTAB, ITC and NLRB decisions, all in one place.

Identify arguments that have been successful in the past with full text, pinpoint searching. Link to case law cited within any court document via Fastcase.

## Analytics At Your Fingertips



Learn what happened the last time a particular judge, opposing counsel or company faced cases similar to yours.

Advanced out-of-the-box PTAB and TTAB analytics are always at your fingertips.

## API

Docket Alarm offers a powerful API (application programming interface) to developers that want to integrate case filings into their apps.

## LAW FIRMS

Build custom dashboards for your attorneys and clients with live data direct from the court.

Automate many repetitive legal tasks like conflict checks, document management, and marketing.

## FINANCIAL INSTITUTIONS

Litigation and bankruptcy checks for companies and debtors.

## E-DISCOVERY AND LEGAL VENDORS

Sync your system to PACER to automate legal marketing.