



US005508706A

United States Patent [19] Tsou et al.

[11] Patent Number: **5,508,706**
[45] Date of Patent: **Apr. 16, 1996**

[54] RADAR SIGNAL PROCESSOR

5,270,720 12/1993 Stove 342/114
5,373,460 12/1994 Marks, II 364/724.01

[75] Inventors: **Hsi-Shen E. Tsou**, Rancho Palos Verdes; **Mark T. Core**, Placentia; **James G. Harrison**, Cypress; **Philip J. Moffa**, Torrance; **Gregory A. Shreve**, Redondo Beach, all of Calif.

Primary Examiner—Daniel T. Pihulic

[73] Assignee: **TRW Inc.**, Redondo Beach, Calif.

[21] Appl. No.: **173,540**

[22] Filed: **Dec. 23, 1993**

Related U.S. Application Data

[63] Continuation-in-part of Ser. No. 117,266, Sep. 7, 1993, which is a continuation-in-part of Ser. No. 767,953, Sep. 30, 1991, Pat. No. 5,315,303.

[51] Int. Cl.⁶ **G01S 13/532**

[52] U.S. Cl. **342/192; 342/110**

[58] Field of Search 342/109, 110, 342/114, 115, 128, 175, 192, 196; 364/724.01

[57] ABSTRACT

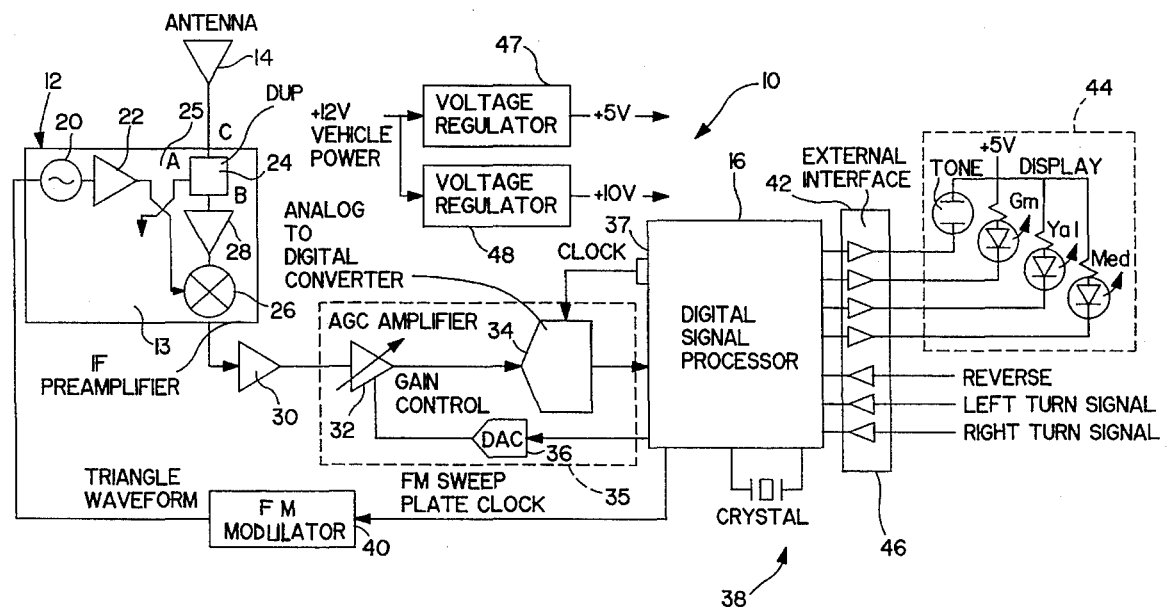
A radar system includes a radar transceiver for generating transmit signals and for receiving signals reflected by targets. The radar system includes a mixer for combining the transmit signals and the reflected signals into a mixer signal. A radar signal processor includes a sampling device, connected to the mixer, for sampling the mixer signal and for generating a sampled mixer signal. A spectrum estimation device, connected to the sampling device, generates a range profile signal including a plurality of range bins each containing a magnitude of a spectral component. A threshold device, connected to the spectrum estimation device, generates a target space array from the range profile signal. A target decision device, connected to the threshold device, generates estimated range and speed signals for a closest target from the target space array.

[56] References Cited

U.S. PATENT DOCUMENTS

5,134,411 7/1992 Adler 342/128

24 Claims, 18 Drawing Sheets



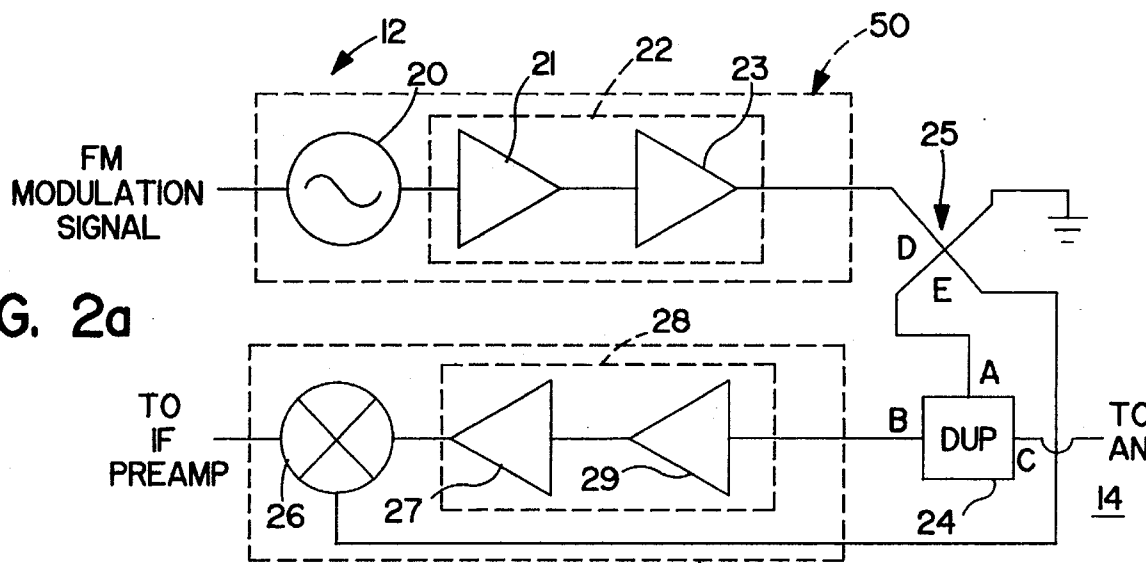


FIG. 2a

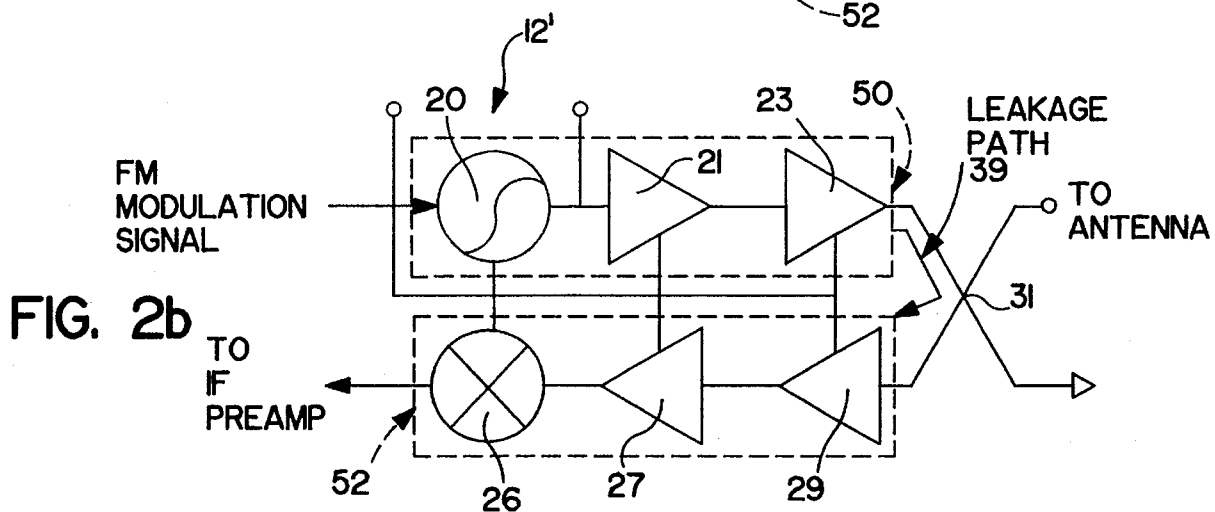


FIG. 2b

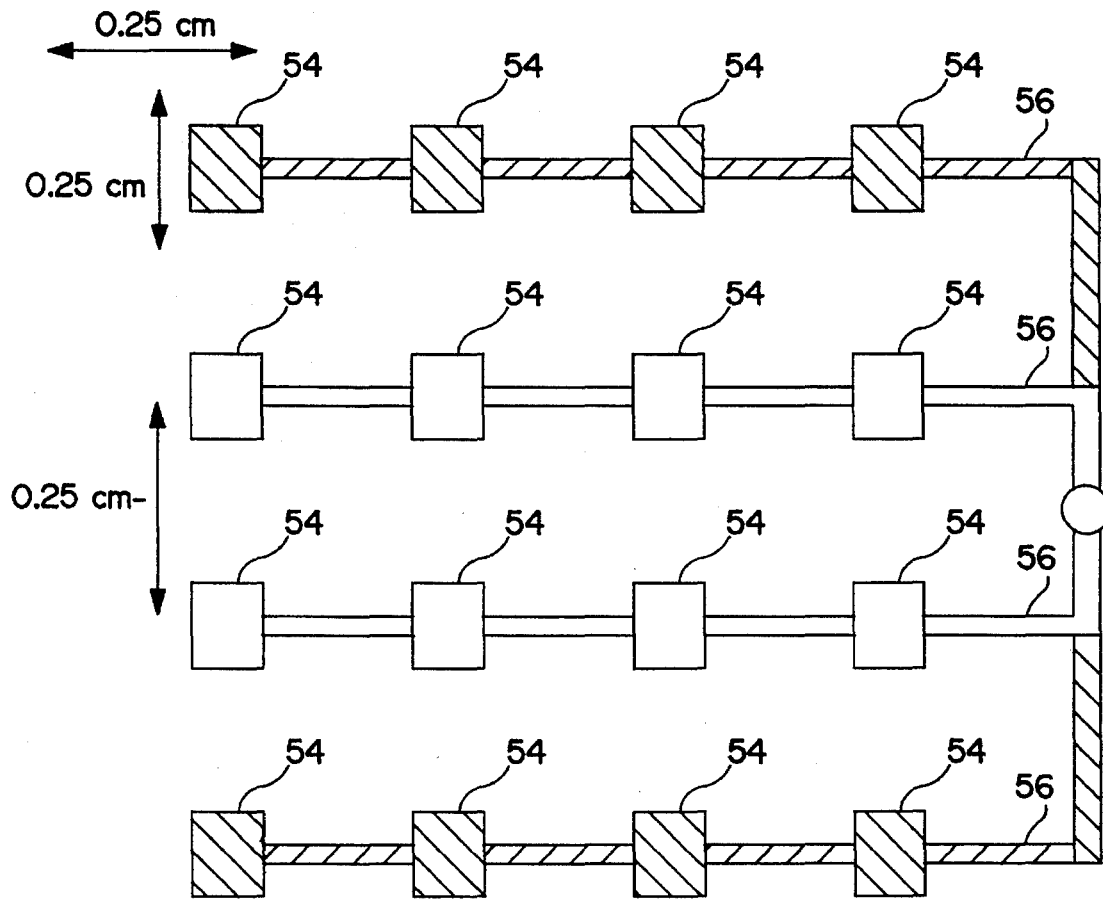


FIG. 3

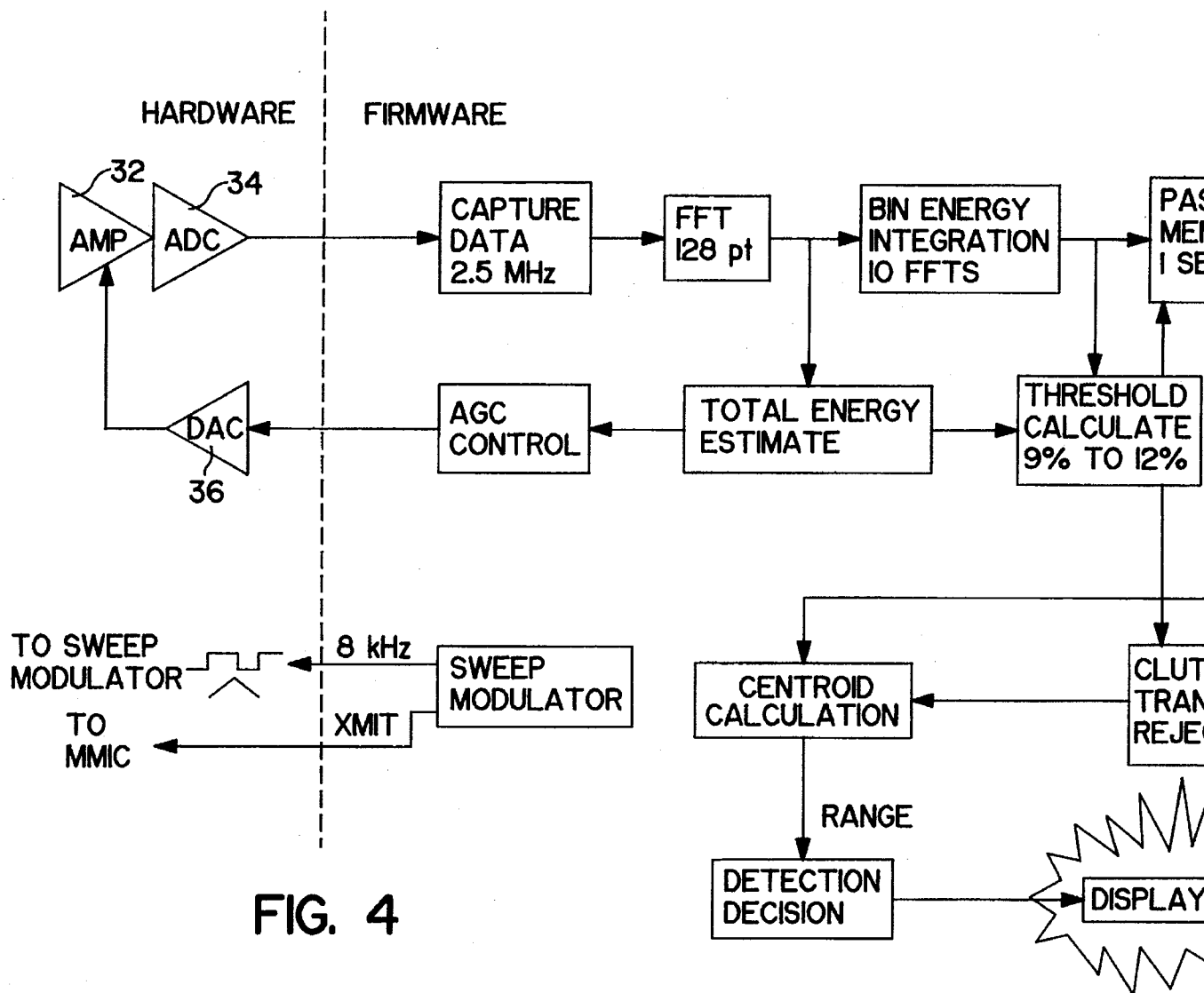


FIG. 4

Explore Litigation Insights

Docket Alarm provides insights to develop a more informed litigation strategy and the peace of mind of knowing you're on top of things.

Real-Time Litigation Alerts



Keep your litigation team up-to-date with **real-time alerts** and advanced team management tools built for the enterprise, all while greatly reducing PACER spend.

Our comprehensive service means we can handle Federal, State, and Administrative courts across the country.

Advanced Docket Research



With over 230 million records, Docket Alarm's cloud-native docket research platform finds what other services can't. Coverage includes Federal, State, plus PTAB, TTAB, ITC and NLRB decisions, all in one place.

Identify arguments that have been successful in the past with full text, pinpoint searching. Link to case law cited within any court document via Fastcase.

Analytics At Your Fingertips



Learn what happened the last time a particular judge, opposing counsel or company faced cases similar to yours.

Advanced out-of-the-box PTAB and TTAB analytics are always at your fingertips.

API

Docket Alarm offers a powerful API (application programming interface) to developers that want to integrate case filings into their apps.

LAW FIRMS

Build custom dashboards for your attorneys and clients with live data direct from the court.

Automate many repetitive legal tasks like conflict checks, document management, and marketing.

FINANCIAL INSTITUTIONS

Litigation and bankruptcy checks for companies and debtors.

E-DISCOVERY AND LEGAL VENDORS

Sync your system to PACER to automate legal marketing.