

Keywords: castration-resistant prostate cancer; prednisolone; glucocorticoid receptor; steroid switch; abiraterone; hormone therapy; dexamethasone; androgen receptor

Tumour responses following a steroid switch from prednisone to dexamethasone in castration-resistant prostate cancer patients progressing on abiraterone

D Lorente¹, A Omlin^{1,2}, R Ferraldeschi¹, C Pezaro¹, R Perez¹, J Mateo¹, A Altavilla¹, Z Zafeirou¹, N Tunariu¹, C Parker³, D Dearnaley³, S Gillissen², J de Bono^{*,1} and G Attard¹

¹Prostate Cancer Targeted Therapy Group and Drug Development Unit, The Royal Marsden NHS Foundation Trust and The Institute of Cancer Research, Downs Road, Sutton SM2 5PT, Surrey, UK; ²Kantonsspital St. Gallen, Department of Oncology and Haematology, Rorschacherstrasse 95, CH-9007 St. Gallen, Switzerland and ³Academic Urology Unit, The Royal Marsden NHS Foundation Trust, Downs Road, Sutton SM2 5PT, Surrey, UK

Background: Abiraterone is a CYP17A1 inhibitor that improves survival in castration-resistant prostate cancer (CRPC). Abiraterone is licensed in combination with prednisone 5 mg twice daily to prevent a syndrome of secondary mineralocorticoid excess. We hypothesised that a 'steroid switch' from prednisone to dexamethasone would induce secondary responses in patients progressing on abiraterone and prednisone 5 mg b.i.d.

Methods: We performed a 'steroid switch' in patients with CRPC at PSA progression on abiraterone and prednisolone. Patients were monitored for secondary declines in PSA, radiological tumour regression and toxicity.

Results: A retrospective analysis of 30 CRPC patients who underwent a steroid switch from prednisolone to dexamethasone while on abiraterone was performed. A total of six patients (20%) had a $\geq 50\%$ PSA decline that was confirmed by a second PSA level at least 3 weeks later. In all, 11 patients (39.2%) had a confirmed $\geq 30\%$ PSA decline. Median time to PSA progression on abiraterone and dexamethasone was 11.7 weeks (95% CI: 8.6–14.8 weeks) in the whole cohort and 27.6 weeks (95% CI: 14.5–40.7 weeks) in patients who achieved a confirmed 50% PSA decline. Nine patients had RECIST evaluable disease: two of these patients had RECIST partial response, six patients had stable disease and one patient had progressive disease at the first imaging assessment. Treatment was well tolerated, with no grade 3 and grade 4 adverse events. One patient had to be reverted to prednisolone because of grade 2 hypotension.

Conclusions: Durable PSA responses occur in up to 40% of patients following a 'steroid switch' for PSA progression on abiraterone and prednisone. Studies are ongoing to elucidate the mechanisms underlying this response.

In recent years, two novel hormonal agents have received regulatory approval for the treatment of castration-resistant prostate cancer (CRPC). Both abiraterone, a CYP17A1 inhibitor that suppresses androgen and oestrogen synthesis, and enzalutamide, a potent next-generation antiandrogen, have been

shown to improve overall survival in large, randomised, placebo-controlled phase III trials (de Bono *et al*, 2011; Scher *et al*, 2012). Abiraterone was evaluated in phase III trials and is licensed for administration in combination with prednisone (administered as the active metabolite prednisolone in the UK)

*Correspondence: Professor J de Bono; E-mail: Johann.DeBono@icr.ac.uk

Received 30 May 2014; revised 2 September 2014; accepted 10 September 2014; published online 14 October 2014

© 2014 Cancer Research UK. All rights reserved 0007–0920/14

Amerigen Exhibit 1129

Amerigen v. Janssen
IPR2016-00286

Table 1. Overall clinical characteristics at steroid switch: median (range)

	Overall	Responders (PSA decline ≥ 50%)	Nonresponders (PSA decline < 50%)
N	30	8	22
Age	68.9 years	65 years (61–82)	69.6 years (51.2–80)
ECOG PS			
0	8 (26.7%)	4 (50)	4 (18.2)
1	19 (63.3%)	3 (37.5)	16 (72.9)
2	3 (10%)	1 (12.5)	2 (9.1)
Haemoglobin (g dl ⁻¹)	12.6 (7.9–15.2)	12.6 (7.9–14.4)	12.6 (10.9–15.2)
Alk Phos (IU l ⁻¹)	140.5 (48–2238)	100 (53–2238)	158 (48–630)
LDH (IU l ⁻¹)	172.5 (107–631)	214 (169–546)	170 (107–631)
Albumin (g dl ⁻¹)	36 (25–42)	36 (25–42)	37 (33–42)
PSA (ng ml ⁻¹)	199.5 (9.7–2689)	331.5 (9.7–2689)	164 (11–523)
Metastases			
B only	12 (40%)	4 (50)	8 (36.4)
B + LN	12 (40%)	2 (25)	10 (45.5)
B + V	1 (3.3%)	1 (12.5)	0
B + LN + V	3 (10%)	0	3 (13.6)
LN only	2 (6.6%)	1 (12.5)	1 (4.5)
Previous bicalutamide			
Yes	23 (76.7%)	6 (75)	17 (80)
No	7 (23.3%)	2 (25)	5 (20)
Previous Dex monotherapy			
Yes	9 (30%)	4 (50)	5 (22.7)
No	21 (70%)	4 (50)	17 (77.3)
Median time on previous Dex	6.6 m (2–55.2)	10.1 m (3.5–55.2)	6.6 m (2–29)
Previous CT lines			
0	4 (13.3%)	0	4 (18.2)
1	24 (80%)	7 (87.5)	17 (77.3)
2	2 (6.6%)	1 (12.5)	1 (4.5)
Median Time on AA + P	6.36 m (2.7–28.7)	6.8 m (4.8–28.7)	5.4 m (2.7–16.7)
Median % PSA decline on AA + P	71.5% (99% to +65%)	78.2% (99% to +65%)	66.6% (97% to +63%)

Abbreviations: AA = Abiraterone; Alk Phos = Alkaline Phosphatase; B = bone; CAB = combined androgen blockade; CT = chemotherapy; Dex = Dexamethasone; LDH = Lactate dehydrogenase; LN = lymph nodes; m = months; NR = not reached; P = prednisolone; PS = performance status; PSA = prostate-specific antigen; V = visceral; yr = years.

5 mg twice daily, to prevent a syndrome of secondary mineralocorticoid excess caused by a loss of negative feedback of adrenocorticotrophic hormone (Attard *et al*, 2008).

We have previously reported a randomised phase II trial of dexamethasone 0.5 mg daily vs prednisolone 5 mg b.i.d. in CRPC patients, in which the confirmed ≥ 50 PSA decline rates were 31% for dexamethasone and 17% for prednisolone (Venkitaraman *et al*, 2013). Moreover, in our previously reported phase I/II trial of abiraterone initially administered without concomitant corticosteroids to 54 patients, the addition of dexamethasone 0.5 mg once daily at PSA progression on abiraterone without steroids resulted in secondary PSA declines in 25% of patients (Attard *et al*, 2009), regardless of prior progression on the same dose and regimen of single agent dexamethasone. We hypothesised that changing prednisolone for dexamethasone (a term we designated ‘steroid switch’) would be associated with tumour responses and could re-induce sensitivity to abiraterone.

PATIENTS AND METHODS

Patient characteristics. We performed a retrospective analysis of CRPC patients in whom a steroid switch from prednisolone to dexamethasone was performed between January 2011 and December 2013 at the Royal Marsden NHS Foundation Trust and the Kantonsspital St. Gallen. All patients were experiencing PSA progression according to Prostate Cancer Working Group 2

Table 2. Treatment received after discontinuation of abiraterone and dexamethasone

Cabazitaxel	9 (30%)
Docetaxel	3 (10%)
Enzalutamide	2 (6.7%)
Carboplatin	1 (3.3%)
PARP inhibitor	1 (3.3%)
Diethylstilboestrol	1 (3.3%)
Best supportive care	6 (20%)

criteria (PSAWG2) (Scher *et al*, 2008); in addition, radiological progression was observed in three patients before switching steroids. All patients were clinically stable. IRB approval to report these data was obtained from the Committee for Clinical Research at the Royal Marsden and Ethical Committee of the Kantonsspital St Gallen. The date of cut-off was the 4th of January 2014.

A descriptive analysis of clinical characteristics, PSA declines and previous treatments was performed. Imaging assessments were performed as per local guidelines, every 3–6 months. Treatment with abiraterone and dexamethasone was discontinued at the time of clinical or radiological progression. Patients who received doses of dexamethasone > 1 mg once daily for more than 4 weeks were excluded from the analysis.

In accordance with PSAWG2 criteria (Scher *et al*, 2008), a PSA decline was defined as confirmed if it persisted in a second reading at

least 3 weeks later. PSA progression was defined as a 25% rise above the nadir, confirmed by a second reading at least 3 weeks later (Scher *et al*, 2008). Time to PSA progression was defined as the time from

switch to the first PSA value fulfilling progression criteria. Radiological responses were defined as per RECIST (Response Evaluation Criteria In Solid Tumours) version 1.1 (Eisenhauer *et al*, 2009).

Statistical analyses. Statistical analyses were performed with IBM SPSS Statistics version 20. Time on treatment with abiraterone and dexamethasone (after steroid switch), time to PSA progression and time to PSA nadir were calculated using the Kaplan–Meier method.

RESULTS

Patient characteristics. We performed a steroid switch on standard doses of abiraterone from prednisolone/prednisone 5 mg twice daily to dexamethasone 0.5–1 mg once daily at PSA progression in 30 patients. A total of 26 patients had a switch from 10 mg prednisolone/prednisone to 0.5 mg dexamethasone. One patient had an initial dose of 1.5 mg once daily, which was successfully tapered to 0.5 mg over the first 3 weeks. One patient received dexamethasone 2 mg once daily initially, which was tapered to 1 mg once daily over 3 weeks; the remaining two patients received dexamethasone 1 mg once daily, with no dose modifications. Clinical characteristics of patients at the time of steroid switch are summarised in Table 1.

At the time of data cut-off, 23 patients had discontinued treatment and 7 patients still continued on treatment with abiraterone and dexamethasone. Treatments administered after discontinuation of abiraterone are summarised in Table 2.

Nine patients (30%) had received previous single agent dexamethasone; all of these patients had documented disease progression on dexamethasone, which consisted in PSA progression in five patients and PSA and radiological progression in four patients. Patients had received abiraterone and prednisolone/prednisone for a median of 27.73 weeks (range: 11.7–124.4) before replacing prednisolone/prednisone 5 mg twice daily with dexamethasone 0.5–1 mg once daily.

Duration of treatment. Treatment with abiraterone and dexamethasone was maintained for a median of 20.6 weeks

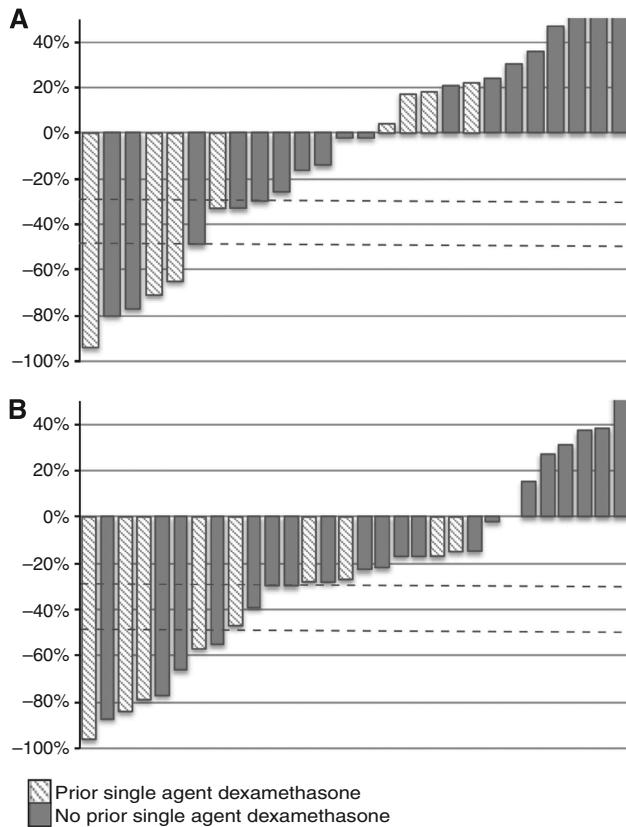


Figure 1. Waterfall graph representing PSA declines on steroid switch. (A) PSA declines at 12 weeks. (B) Maximum PSA declines. Striped bars represent patients with prior single agent dexamethasone; nonstriped bars represent patients with no prior single agent dexamethasone. PSA increases have been capped at +50%.

Table 3. Clinical characteristics of patients with a confirmed $\geq 50\%$ PSA decrease

	95.6%	84.5%	79.4%	78.6%	77.2%	57%
Max. PSA decline (%)	95.6%	84.5%	79.4%	78.6%	77.2%	57%
Dose of daily Dex (mg)	0.5	0.5	0.5	0.5	1 ^a	0.5
Clinical characteristics at steroid switch						
Age (years)	73.1	81.8	61	62.5	63.6	73
ECOG PS on Switch	1	0	1	1	0	0
Hb (g dl ⁻¹)	10	12.4	14.4	13.7	12.8	13.6
Alk Phos (IU l ⁻¹)	2238	100	57	85	NA	53
LDH (IU l ⁻¹)	418	214	171	169	NA	242
Albumin (g dl ⁻¹)	36	42	37	34	NA	36
Metastases	Bone	Bone, LN	LN	Bone, LN	Bone	LN, Pulm
Response to steroid switch						
Baseline PSA before switch (ng ml ⁻¹)	1084	2689	9.7	210	37.7	15
PSA nadir on switch	48	418	1.9	45	8.5	6.5
Duration of treatment Abi + Dex (m)	12.2 (Ong)	6.5 (Ong)	5.7	13.9	5.5 (Ong)	5.8
Time to PSA nadir on Abi + Dex (m)	3.6	4.7	1.8	6.2	4.5	1.5
Time to PSA Progression on Abi + Dex (m)	8.7	3.6	3.6	8.7	6.4	4.9
Treatment before switch						
Duration of treatment AA + Pred (m)	4.8	4.8	22.1	14.9	6.7	6.4
Max. PSA decline on AA + Pred	78%	27%	99%	38%	84%	48%
Previous single agent Dex (m)	Yes (59.9)	Yes (15.3)	No	Yes (3.5)	No	Yes (4.9)
Time from previous single agent Dex (m)	28.1	15.6	—	45.8	—	6.4
Max. PSA decline on Previous single agent Dex	97%	27%	—	38%	—	71%
Previous CT lines	1	1	1	1	1	2
Abbreviations: Alk Phos = Alkaline Phosphatase; CT = chemotherapy; Dex = dexamethasone; Hb = haemoglobin; LDH = Lactate dehydrogenase; LN = lymph nodes; m = months; NR = not reached; Ong = ongoing; PSA = prostate-specific antigen; Pulm = pulmonary metastases; yr = years.						
^a Initially on Dexamethasone 2 mg OD, tapered to 1 mg over 2 weeks and kept on 1 mg OD throughout the study.						

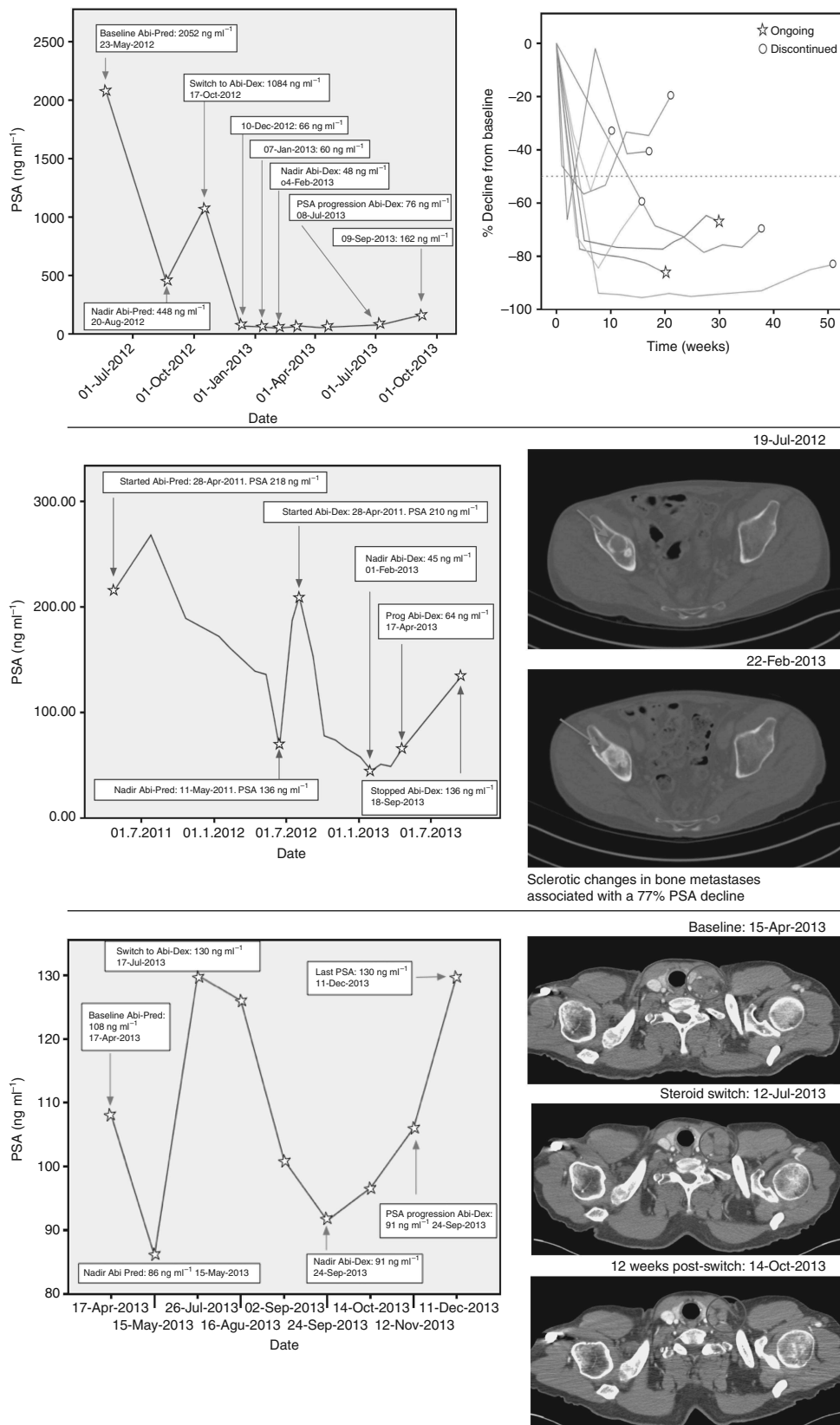


Figure 2. Top left: evolution of PSA values in a patient with a 95.6% PSA decline. Top right: evolution of PSA values (%) in patients with a $\geq 50\%$ PSA decline. Middle: increased bone lesion sclerosis during treatment in a patient with a 77% PSA decline. Bottom: RECIST PR in supraclavicular lymph nodes in a patient with a 30% PSA decline.

(95% CI: 16.2–24.9). A total of 23 patients had discontinued treatment and 7 patients continued on treatment at data censoring. Of these, 13 patients (56.5%) discontinued treatment owing to

radiological progression, 7 (30.4%) owing to clinical progression and 3 (13%) owing to PSA progression exclusively before being enrolled in subsequent clinical trials.

One patient stopped treatment because of radiological progression with new liver lesions on the CT scan performed owing to clinical worsening (increased fatigue and pain) 4 weeks after the steroid switch despite a 55% decline in PSA levels. Upon discontinuation of abiraterone, this patient went on to receive cabazitaxel chemotherapy.

PSA declines. Declines in PSA >50% that were confirmed by at least one PSA value 4 weeks later were observed in six patients. Two patients had unconfirmed maximal PSA declines of 66% and 55%, respectively. PSA declines at 12 weeks and maximum PSA declines are represented in Figure 1. The clinical characteristics of the six patients with a confirmed PSA decline \geq 50% are summarised in Table 3. Four of these patients remained on treatment at the time of data cut-off. Eleven patients (39%) had confirmed PSA declines \geq 30%. Baseline PSA at steroid switch ranged from 9.7 to 2689 ng ml⁻¹. Median time to PSA nadir in patients with a confirmed 50% PSA decline was 7.7 weeks (95% CI: 0–20.8 weeks). Median time to PSA progression on abiraterone and dexamethasone was 11.7 weeks (95% CI: 8.6–14.8 weeks) in the whole cohort and 27.6 weeks (95% CI: 14.5–40.7 weeks) in patients who achieved a confirmed 50% PSA decline. The change in PSA values relative to baseline is represented in Figure 2. Three of seven patients with serum LDH above normal limits at steroid switch experienced a post-switch normalisation; all three patients had a 50% PSA decline.

Of the six patients with confirmed 50% PSA declines, four had received previous treatment with single agent dexamethasone, for a duration ranging between 15.2 and 259.6 weeks. Five patients had received prior bicalutamide. Four patients had received prior docetaxel, one patient was chemotherapy naïve and one patient had received docetaxel and mitoxantrone. Response to previous treatment with abiraterone and prednisolone/prednisone ranged from a 27% to a 99% PSA decline.

Radiological response. Overall, 20 patients had a CT scan performed within 4 weeks before the steroid switch that was used as a baseline for response assessment. Nine patients had RECIST evaluable disease. One patient, with baseline bone metastasis and a histologically proven adrenal metastasis, showed a RECIST partial response after 12 weeks of treatment and a 77% confirmed PSA decline. A second RECIST partial response in supraclavicular and retroperitoneal nodes was observed after 12 weeks in a patient with baseline lymph node disease only in conjunction with a confirmed 30% PSA decline (Figure 2). Five patients with RECIST evaluable disease had stable disease on imaging assessment, with maximal PSA declines ranging from 80% to 15%. Two of these patients showed no change in the size of the lymph nodes, but a significant increase in sclerosis of the bone lesions was observed (Figure 2).

Safety. Treatment was well tolerated with no grade 3 toxicities (see Table 4). No dose reductions of abiraterone were required. One patient, who was normotensive on abiraterone and prednisolone 5 mg b.i.d. and had not been on antihypertensives, experienced grade 2 postural hypotension after steroid switch that mandated re-initiation of prednisolone 5 mg b.i.d. before final discontinuation of abiraterone. Postural hypotension resolved after restarting prednisolone 5 mg twice daily instead of dexamethasone 0.5 mg once daily. Conversely, grade 1 and grade 2 hypertension was present in six patients (21%), four of whom had also had hypertension of an equal grade on abiraterone and prednisolone 5 mg twice daily that persisted despite institution of antihypertensive medication. Two patients (7.1%) presented with grade 1 hypokalaemia, one of whom had also previously suffered two episodes of grade 1 hypokalaemia on abiraterone and prednisolone 5 mg twice daily. Two patients (7.1%) presented with self-limiting grade 1 to grade 2 transaminase elevation that resolved after 4 weeks. One patient experienced grade 1 hyponatraemia that lasted

Table 4. Toxicity before and after steroid switch

Grade 1-2 Toxicity	Pre-switch	Post-switch
Hypertension	11 (39.3%)	7 (29%)
Hypokalaemia	8 (28.6%)	2 (7.1%)
Transaminase elevation	2 (7.1%)	1 (3.6%)
Other ^a	1 (3.6%)	2 (7.1%)

^aOther: One patient experienced grade 1 hyponatraemia that lasted for 4 cycles while on abiraterone + prednisolone, which reappeared after steroid switch for 1 cycle and was spontaneously recovered. One patient experienced grade 2 postural hypotension after steroid switch.

for four cycles while on abiraterone and prednisolone, and persisted for two cycles after steroid switch. No new episodes of fluid retention or other adverse events were observed.

DISCUSSION

This is the first report of multiple durable PSA declines in patients treated with abiraterone after a steroid switch from prednisolone 5 mg b.i.d. to dexamethasone 0.5–1 mg once daily. In seven patients, maximum PSA declines on abiraterone and dexamethasone were at least 25% < those achieved on abiraterone and prednisolone, and eight patients had a longer treatment duration on abiraterone and dexamethasone than on abiraterone and prednisolone (Figure 1). This hypothesis-generating report should now lead to prospective evaluation of changes in steroid dose while continuing and after discontinuing abiraterone.

Radiological responses in soft tissue and/or nodal disease were observed in two out of nine patients. Increased sclerosis on CT with no change in the size of bone metastases was also observed in three patients who also had PSA declines. There are currently no established objective criteria to evaluate response in bone metastatic disease on CT scans; preliminary data suggest that an increase in bone lesion sclerosis may be associated with therapeutic response, as suggested by the correlation between reduction in FDG uptake and increased CT density (measured in Hounsfield units) of bone metastases from prostate cancer (Beheshti *et al*, 2008; Costelloe *et al*, 2010).

Conversion to dexamethasone was well tolerated and was not associated with adrenocortical insufficiency or side effects of mineralocorticoid excess. Dexamethasone has been reported to cause orthostatic hypotension when given as a treatment of secondary mineralocorticoid excess in a phase I trial of abiraterone without concomitant steroids (Ryan *et al*, 2010). A currently ongoing phase II clinical trial (NCT01867710) is evaluating the safety profile of abiraterone given with different steroid regimens (prednisolone 5 mg twice daily, prednisolone 2.5 mg twice daily, prednisolone 5 mg once daily and dexamethasone 0.5 mg once daily) to chemotherapy-naïve metastatic CRPC patients. Moreover, abiraterone activity could be enhanced if combined with eplerenone instead of prednisolone, which, as previously reported, is feasible (Attard *et al*, 2008, 2009).

Several hypotheses could be considered to explain the observed effect. Possible mechanisms of resistance that would be reversed by ‘steroid switch’ are as follows:

- (1) Activation of the glucocorticoid receptor leads to resistance, as recently published for enzalutamide (Arora *et al*, 2013), which is reversed owing to the lower equivalent dose of dexamethasone compared with prednisolone. Reduced activation of the glucocorticoid receptor by doses of dexamethasone with a lower equivalent glucocorticoid activity induces less activation of the GR. In all, 90% of the patients in our study ultimately received 0.5 mg dexamethasone daily, which represents a 67% reduction in glucocorticoid activity compared with

Explore Litigation Insights

Docket Alarm provides insights to develop a more informed litigation strategy and the peace of mind of knowing you're on top of things.

Real-Time Litigation Alerts



Keep your litigation team up-to-date with **real-time alerts** and advanced team management tools built for the enterprise, all while greatly reducing PACER spend.

Our comprehensive service means we can handle Federal, State, and Administrative courts across the country.

Advanced Docket Research



With over 230 million records, Docket Alarm's cloud-native docket research platform finds what other services can't. Coverage includes Federal, State, plus PTAB, TTAB, ITC and NLRB decisions, all in one place.

Identify arguments that have been successful in the past with full text, pinpoint searching. Link to case law cited within any court document via Fastcase.

Analytics At Your Fingertips



Learn what happened the last time a particular judge, opposing counsel or company faced cases similar to yours.

Advanced out-of-the-box PTAB and TTAB analytics are always at your fingertips.

API

Docket Alarm offers a powerful API (application programming interface) to developers that want to integrate case filings into their apps.

LAW FIRMS

Build custom dashboards for your attorneys and clients with live data direct from the court.

Automate many repetitive legal tasks like conflict checks, document management, and marketing.

FINANCIAL INSTITUTIONS

Litigation and bankruptcy checks for companies and debtors.

E-DISCOVERY AND LEGAL VENDORS

Sync your system to PACER to automate legal marketing.