



US007463145B2

(12) **United States Patent**  
**Jentoft**

(10) **Patent No.:** **US 7,463,145 B2**  
(45) **Date of Patent:** **Dec. 9, 2008**

- (54) **SECURITY MONITORING ARRANGEMENT AND METHOD USING A COMMON FIELD OF VIEW**
- (75) Inventor: **Keith Jentoft**, Circle Pines, MN (US)
- (73) Assignee: **RSI Video Technologies, Inc.**, White Bear Lake, MN (US)
- (\* ) Notice: Subject to any disclaimer, the term of this patent is extended or adjusted under 35 U.S.C. 154(b) by 412 days.
- (21) Appl. No.: **11/388,764**
- (22) Filed: **Mar. 24, 2006**

6,271,752	B1	8/2001	Vaios
6,411,209	B1	6/2002	Lyons et al.
6,476,858	B1	11/2002	Ramirez Diaz et al.
6,504,479	B1	1/2003	Lemons et al.
6,690,414	B2	2/2004	Lyons et al.
6,700,487	B2	3/2004	Lyons et al.
6,759,957	B2	7/2004	Murakami et al.
2002/0171557	A1	11/2002	Wegener
2003/0065407	A1	4/2003	Johnson et al.
2003/0193563	A1	10/2003	Suzuki
2003/0202117	A1	10/2003	Garner

(65) **Prior Publication Data**

US 2007/0063840 A1 Mar. 22, 2007

(Continued)  
**FOREIGN PATENT DOCUMENTS**

DE 101 50 745 A 1 4/2003

**Related U.S. Application Data**

- (60) Provisional application No. 60/719,369, filed on Sep. 22, 2005.

(Continued)

(51) **Int. Cl.**

- G08B 13/00** (2006.01)
- G08B 19/00** (2006.01)
- H04N 7/18** (2006.01)
- G08B 1/08** (2006.01)

*Primary Examiner*—Donnie L Crosland  
(74) *Attorney, Agent, or Firm*—Crawford Maunu PLLC

(57) **ABSTRACT**

- (52) **U.S. Cl.** ..... **340/541; 340/517; 340/521; 340/522; 340/565; 340/539.17; 340/693.1; 382/103; 348/152; 348/154; 348/155**
  - (58) **Field of Classification Search** ..... **340/541, 340/517, 521, 522, 565, 539.25, 693.1; 348/152, 348/154, 155**
- See application file for complete search history.

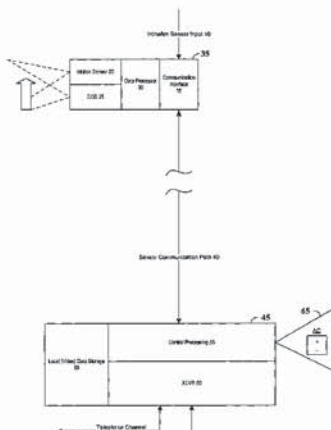
According to one example embodiment, an integrated security arrangement detects unwanted intruders in a facility. The arrangement includes an intrusion sensor to sense an intrusion at a target area of a facility, a second sensor to sense movement, an image-capture device, and a base unit. The image-capture device captures images in response to an intrusion indication from the intrusion sensor and in response to a movement indication from the second sensor. The base unit integrates a direction of view of the second sensor and of the image-capture device, thereby directing the second sensor to sense in the target area in which the images are captured by the image-capture device.

(56) **References Cited**

**U.S. PATENT DOCUMENTS**

- 4,857,912 A 8/1989 Everett, Jr. et al.
- 5,448,290 A 9/1995 Van Zeeland
- 5,703,368 A 12/1997 Tomooka et al.
- 5,819,124 A 10/1998 Somner et al.

**22 Claims, 4 Drawing Sheets**



DDV Exhibit 1007

U.S. PATENT DOCUMENTS

2004/0109059	A1	6/2004	Kawakita
2004/0155781	A1	8/2004	DeOme
2004/0205823	A1	10/2004	Tsai
2004/0205824	A1	10/2004	Tsai
2005/0024206	A1	2/2005	Samarasekera et al.
2005/0134450	A1	6/2005	Kovach
2005/0134454	A1	6/2005	Eskildsen

FOREIGN PATENT DOCUMENTS

EP	676 733	A	10/1995
EP	811 959	A	12/1997
EP	0 856 826	A2	8/1998
EP	1 115 264	A2	7/2001
EP	1 363 260	A1	11/2003

EP	1 499 098	A1	1/2005
EP	1 316 933	B1	8/2006
GB	2 325 548	A	11/1998
GB	2 358 504	A	7/2001
JP	01236397	A	9/1989
JP	11154292		6/1999
JP	2003233889		8/2003
JP	2005071064		3/2005
WO	WO 88/07474		1/1988
WO	WO 00/03367		1/2000
WO	WO 02/46919	A2	6/2002
WO	WO 2004/064355	A2	7/2004
WO	WO 2004/079684	A1	9/2004
WO	WO 2004/114648	A2	12/2004
WO	WO 2005/065196	A2	7/2005

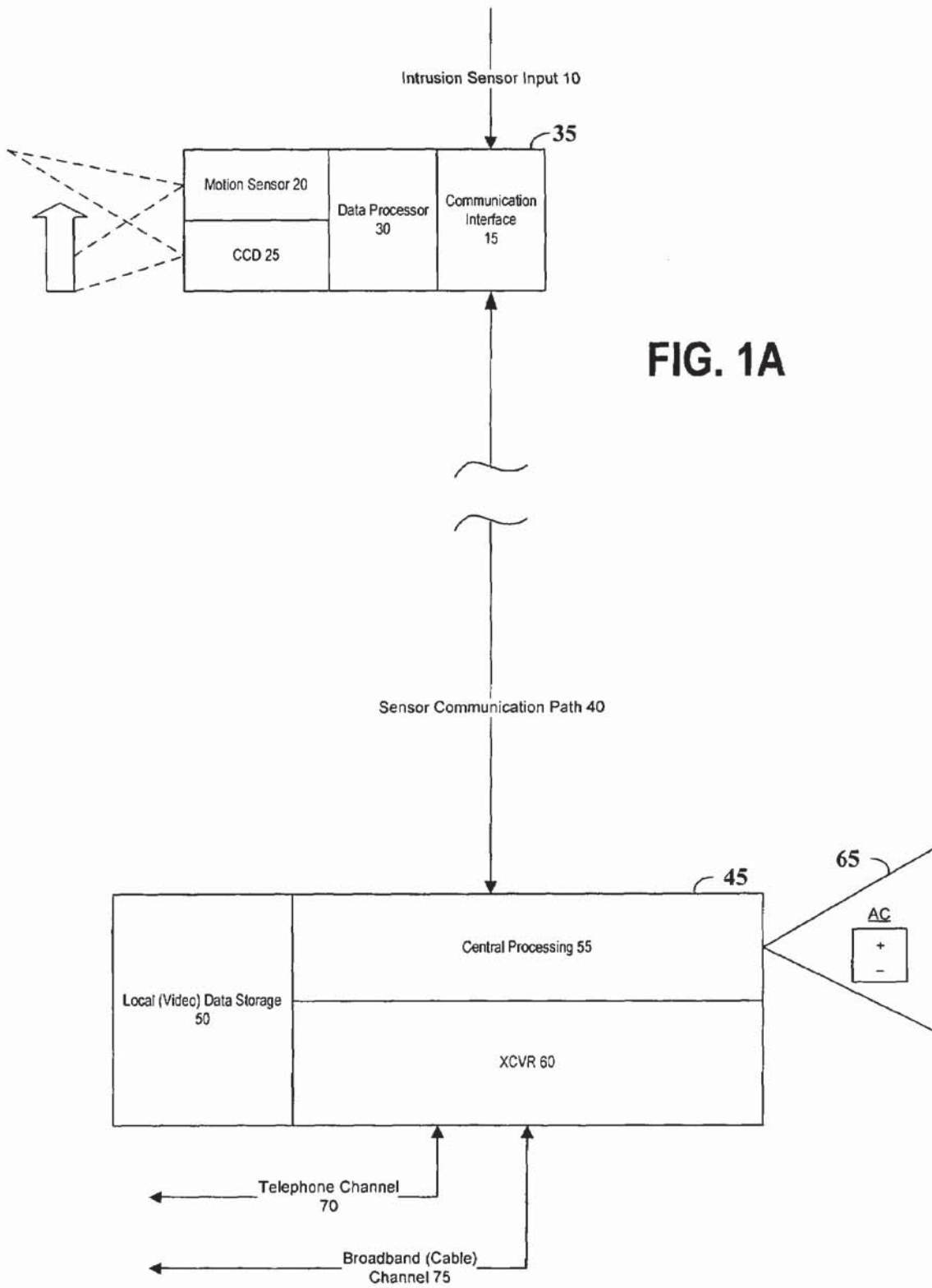


FIG. 1A

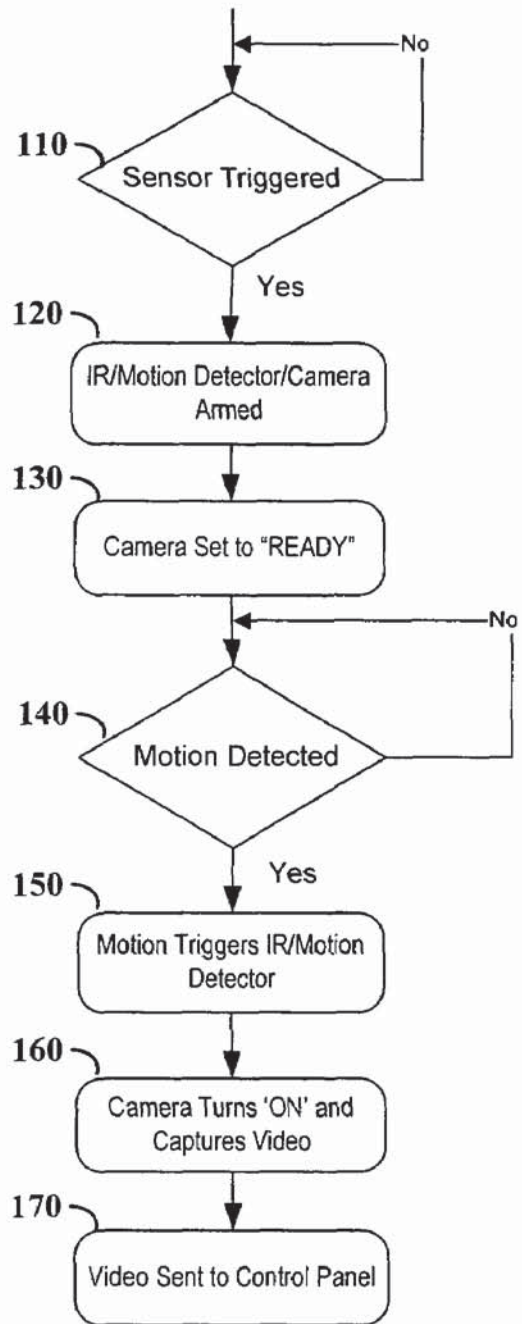


FIG. 1B

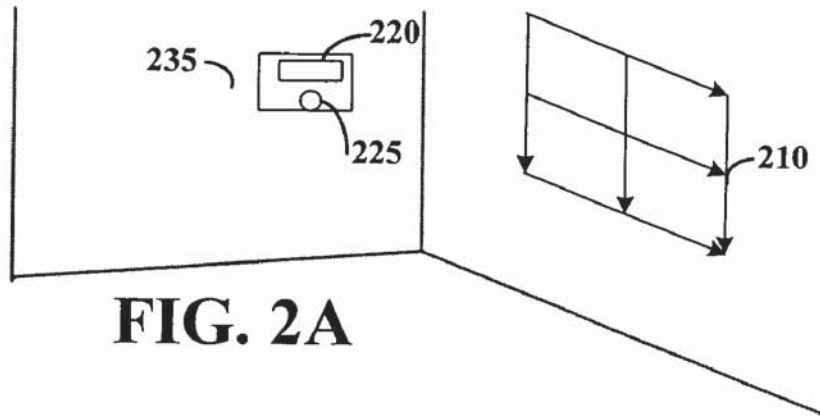


FIG. 2A

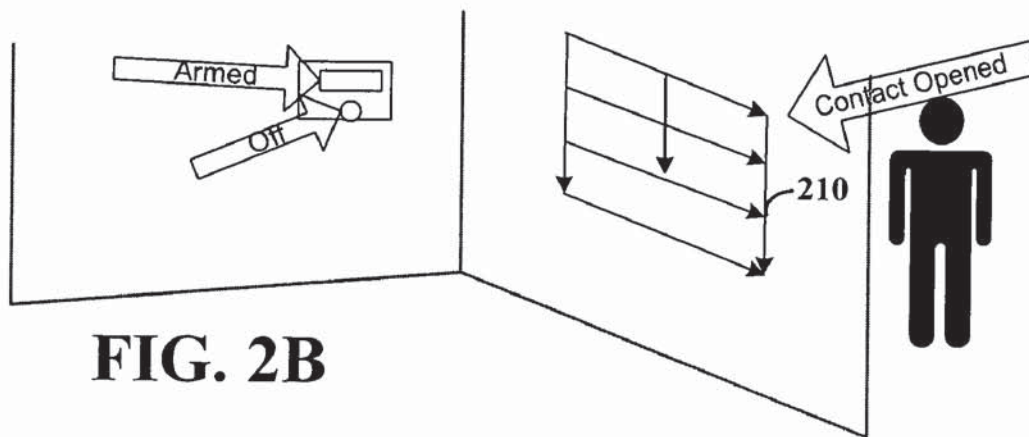


FIG. 2B

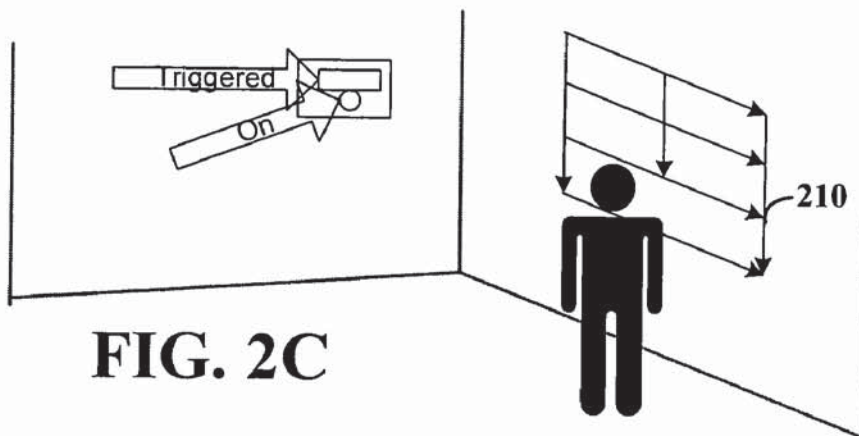


FIG. 2C

# Explore Litigation Insights

Docket Alarm provides insights to develop a more informed litigation strategy and the peace of mind of knowing you're on top of things.

## Real-Time Litigation Alerts



Keep your litigation team up-to-date with **real-time alerts** and advanced team management tools built for the enterprise, all while greatly reducing PACER spend.

Our comprehensive service means we can handle Federal, State, and Administrative courts across the country.

## Advanced Docket Research



With over 230 million records, Docket Alarm's cloud-native docket research platform finds what other services can't. Coverage includes Federal, State, plus PTAB, TTAB, ITC and NLRB decisions, all in one place.

Identify arguments that have been successful in the past with full text, pinpoint searching. Link to case law cited within any court document via Fastcase.

## Analytics At Your Fingertips



Learn what happened the last time a particular judge, opposing counsel or company faced cases similar to yours.

Advanced out-of-the-box PTAB and TTAB analytics are always at your fingertips.

## API

Docket Alarm offers a powerful API (application programming interface) to developers that want to integrate case filings into their apps.

## LAW FIRMS

Build custom dashboards for your attorneys and clients with live data direct from the court.

Automate many repetitive legal tasks like conflict checks, document management, and marketing.

## FINANCIAL INSTITUTIONS

Litigation and bankruptcy checks for companies and debtors.

## E-DISCOVERY AND LEGAL VENDORS

Sync your system to PACER to automate legal marketing.