



US006006333A

- [54] **PASSWORD HELPER USING A CLIENT-SIDE MASTER PASSWORD WHICH AUTOMATICALLY PRESENTS THE APPROPRIATE SERVER-SIDE PASSWORD TO A PARTICULAR REMOTE SERVER**
- [75] Inventor: **Jakob Nielsen**, Atherton, Calif.
- [73] Assignee: **Sun Microsystems, Inc.**, Palo Alto, Calif.
- [21] Appl. No.: **08/615,660**
- [22] Filed: **Mar. 13, 1996**
- [51] **Int. Cl.<sup>6</sup>** ..... **G06F 12/14**
- [52] **U.S. Cl.** ..... **713/202; 713/201; 709/203**
- [58] **Field of Search** ..... **395/187.01, 200.5, 395/188.01, 200.33; 380/25; 713/202, 207; 709/220, 203**

Inside Windows NT, H. Custer, ISBN 1-55615-481-X pp.321-326, 1993.

The UNIX Programming Environment, Kernighan & Pike, ISBN 0-13-937681-X, pp. 52-53.

Microsoft Windows 95 Operating System, Microsoft Corp. (original retail release), Aug. 1995.

Microsoft Windows 95 Resource Kit, Microsoft Press, ISBN 1-55615-678-2, Chapter 11, 1995.

RFC 1510: The Kerberos Network Authentication Service (V5), Kohl, J., Sep. 1993.

*Primary Examiner*—John W. Cabeca  
*Assistant Examiner*—Christopher S. Chow  
*Attorney, Agent, or Firm*—Townsend and Townsend and Crew LLP

[57] **ABSTRACT**

A user operating a client system may access a plurality of remote servers requiring passwords for access by employing a master password. The master password is used to decrypt a stored password for a particular remote server to which the client desires access. The client system maintains a database of encrypted passwords and user IDs for remote servers to which the user is registered. Although each remote server is accessed using a different password, the user need only remember one master password. Since only the master password need be remembered, the passwords particular to specific remote sites may be made more random and thus more secure. Implementation of the password management system need not require modification of any remote servers.

[56] **References Cited**

**U.S. PATENT DOCUMENTS**

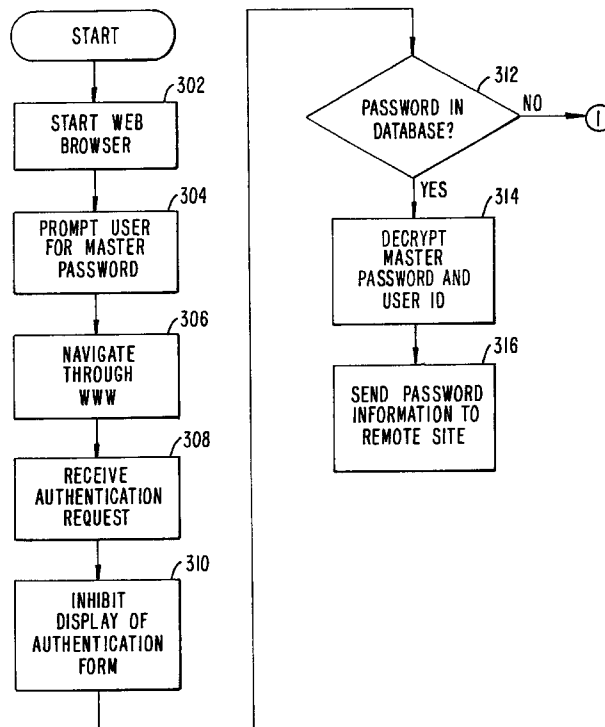
5,481,720	1/1996	Loucks	395/187.01
5,560,008	9/1996	Johnson	395/680
5,611,048	3/1997	Jacobs	395/188.01
5,623,637	4/1997	Jones	395/491
5,642,515	6/1997	Jones	395/727
5,655,077	8/1997	Jones	395/187.01

**OTHER PUBLICATIONS**

Windows NT Resource Guide ISBN 1-55615-653-7, pp. 31-43, 1995.

Windows NT Networking Guide ISBN 1-55615-656-1, pp. 53-78, 1995.

**12 Claims, 5 Drawing Sheets**



Plaid Technologies Inc.

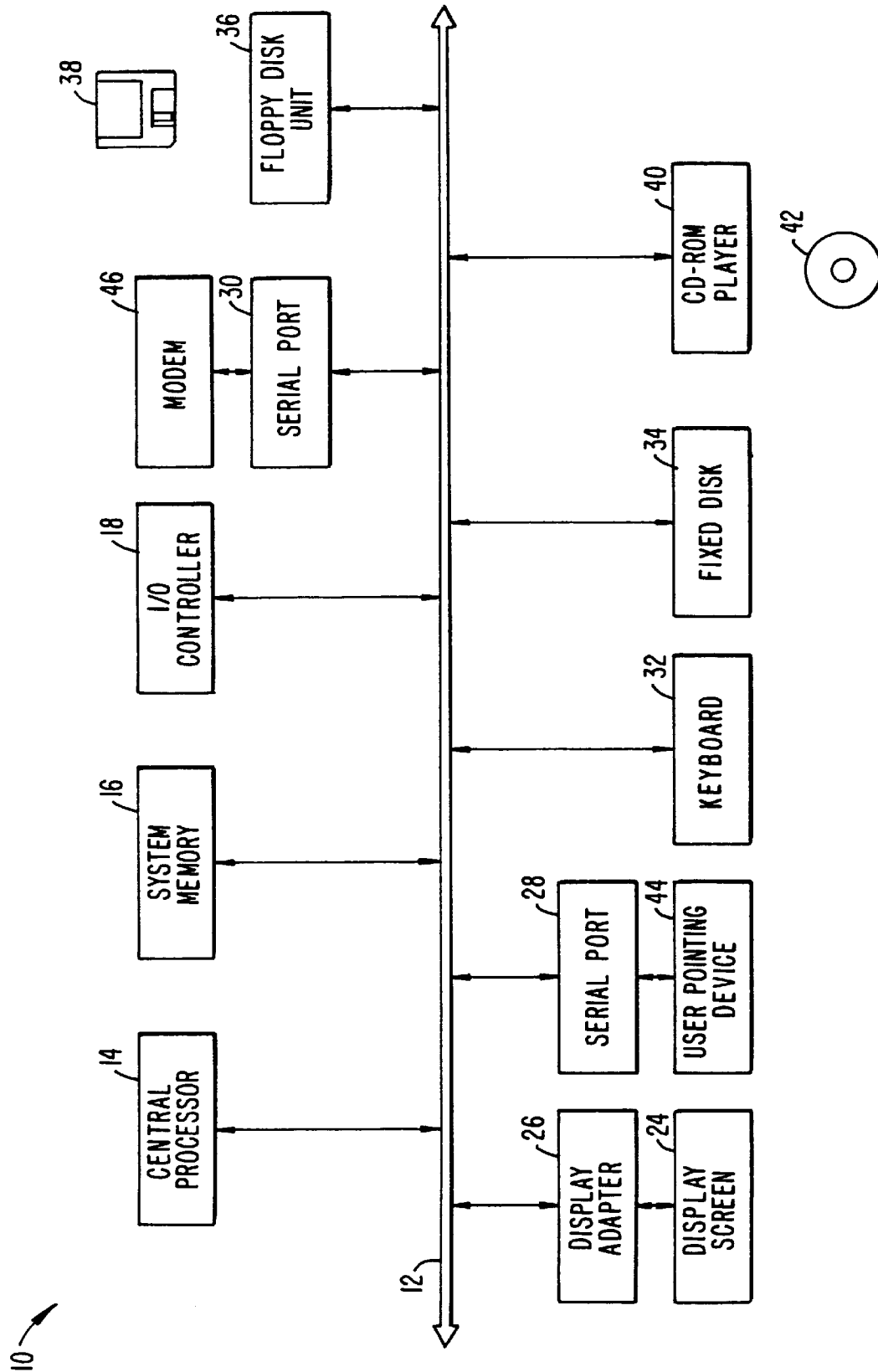
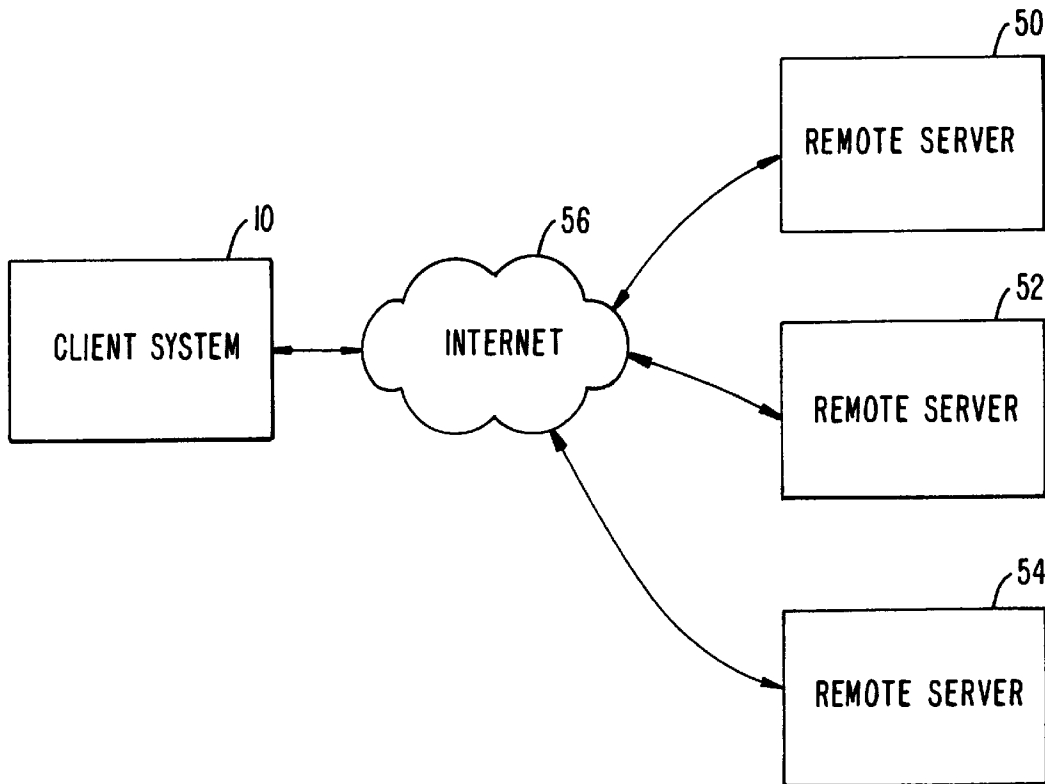
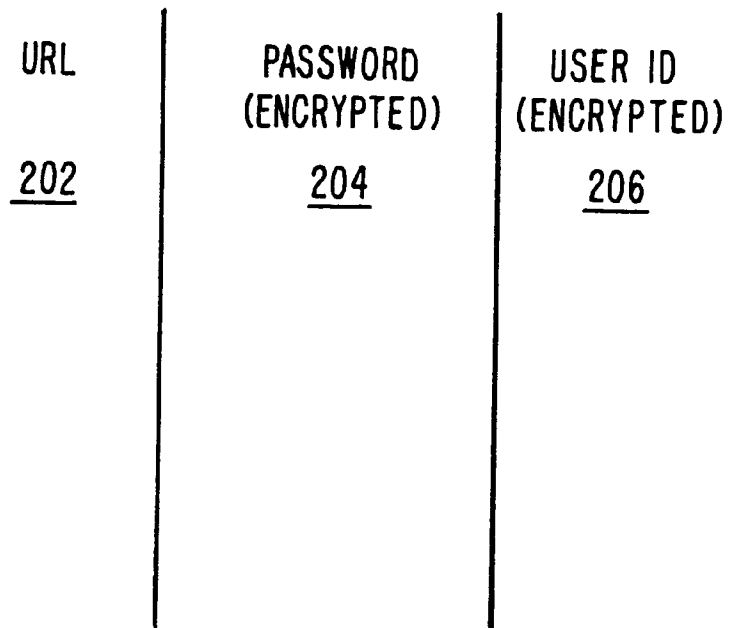


FIG. 1A.



*FIG. 1B.*

200 ↘



*FIG. 2.*

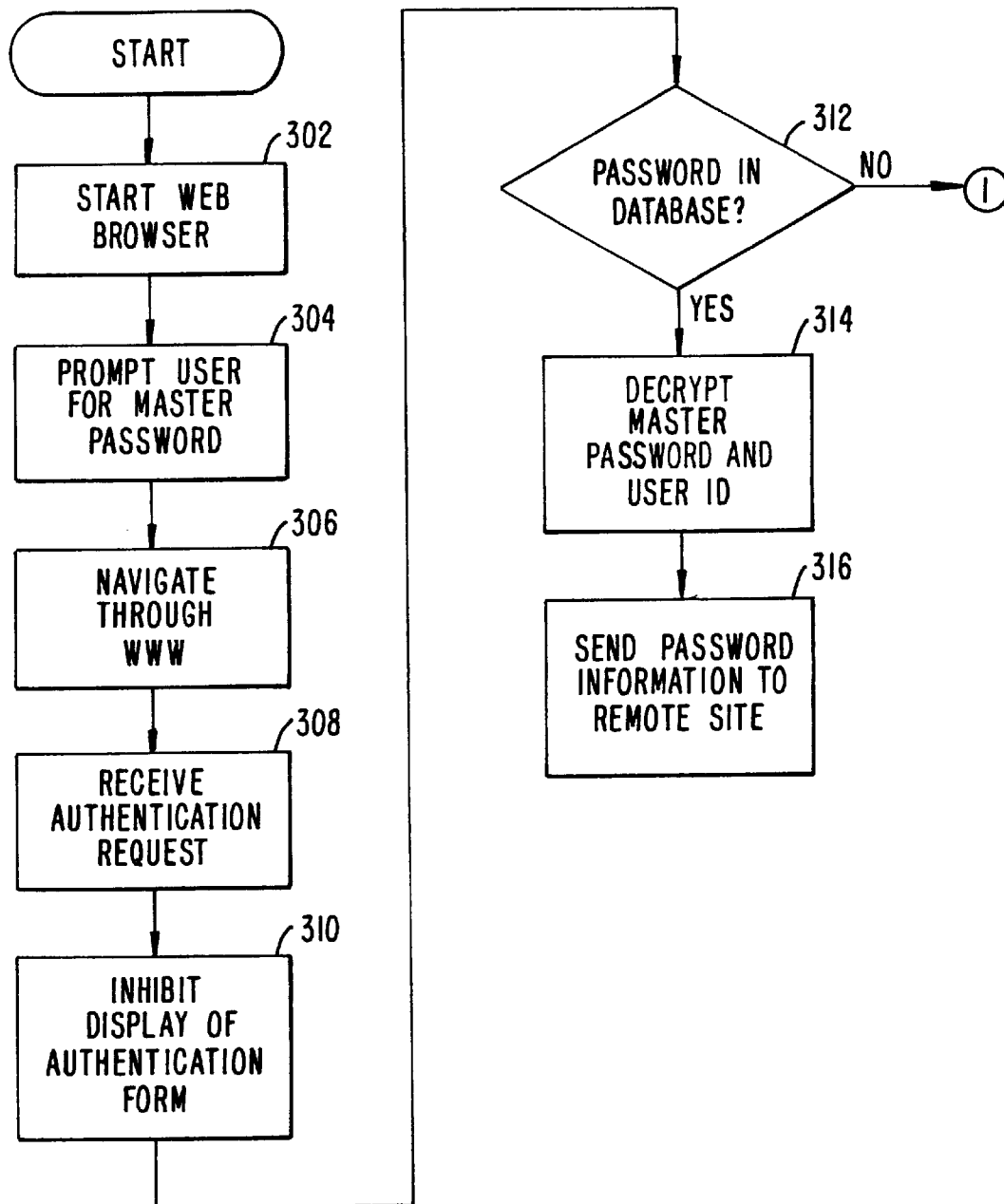


FIG. 3.

# Explore Litigation Insights

Docket Alarm provides insights to develop a more informed litigation strategy and the peace of mind of knowing you're on top of things.

## Real-Time Litigation Alerts



Keep your litigation team up-to-date with **real-time alerts** and advanced team management tools built for the enterprise, all while greatly reducing PACER spend.

Our comprehensive service means we can handle Federal, State, and Administrative courts across the country.

## Advanced Docket Research



With over 230 million records, Docket Alarm's cloud-native docket research platform finds what other services can't. Coverage includes Federal, State, plus PTAB, TTAB, ITC and NLRB decisions, all in one place.

Identify arguments that have been successful in the past with full text, pinpoint searching. Link to case law cited within any court document via Fastcase.

## Analytics At Your Fingertips



Learn what happened the last time a particular judge, opposing counsel or company faced cases similar to yours.

Advanced out-of-the-box PTAB and TTAB analytics are always at your fingertips.

## API

Docket Alarm offers a powerful API (application programming interface) to developers that want to integrate case filings into their apps.

## LAW FIRMS

Build custom dashboards for your attorneys and clients with live data direct from the court.

Automate many repetitive legal tasks like conflict checks, document management, and marketing.

## FINANCIAL INSTITUTIONS

Litigation and bankruptcy checks for companies and debtors.

## E-DISCOVERY AND LEGAL VENDORS

Sync your system to PACER to automate legal marketing.