



US007805461B2

(12) **United States Patent**  
**Gadamsetty et al.**

(10) **Patent No.:** **US 7,805,461 B2**  
(45) **Date of Patent:** **Sep. 28, 2010**

(54) **METHOD AND APPARATUS FOR DATABASE INDUCTION FOR CREATING FRAME BASED KNOWLEDGE TREE**

(75) Inventors: **Srikanth Gadamsetty**, Nashville, TN (US); **Rajesh Kommineni**, Nashville, TN (US); **John Russell Cook**, Nashville, TN (US); **Tim Howland**, Nashville, TN (US)

(73) Assignee: **Edgenet, Inc.**, Atlanta, GA (US)

(\* ) Notice: Subject to any disclaimer, the term of this patent is extended or adjusted under 35 U.S.C. 154(b) by 0 days.

(21) Appl. No.: **11/733,344**

(22) Filed: **Apr. 10, 2007**

(65) **Prior Publication Data**

US 2007/0185900 A1 Aug. 9, 2007

**Related U.S. Application Data**

(63) Continuation of application No. 10/727,596, filed on Dec. 5, 2003, now Pat. No. 7,219,100.

(51) **Int. Cl.**  
**G06F 7/00** (2006.01)  
**G06F 17/30** (2006.01)

(52) **U.S. Cl.** ..... **707/797; 707/804; 707/805**

(58) **Field of Classification Search** ..... **707/3, 707/100, 101, 102, 104.1, 791-793, 797, 707/804, 796, 778, 805; 706/45, 57**

See application file for complete search history.

(56) **References Cited**

U.S. PATENT DOCUMENTS

4,775,935 A 10/1988 Yourick  
5,526,522 A 6/1996 Takeuchi

(Continued)

OTHER PUBLICATIONS

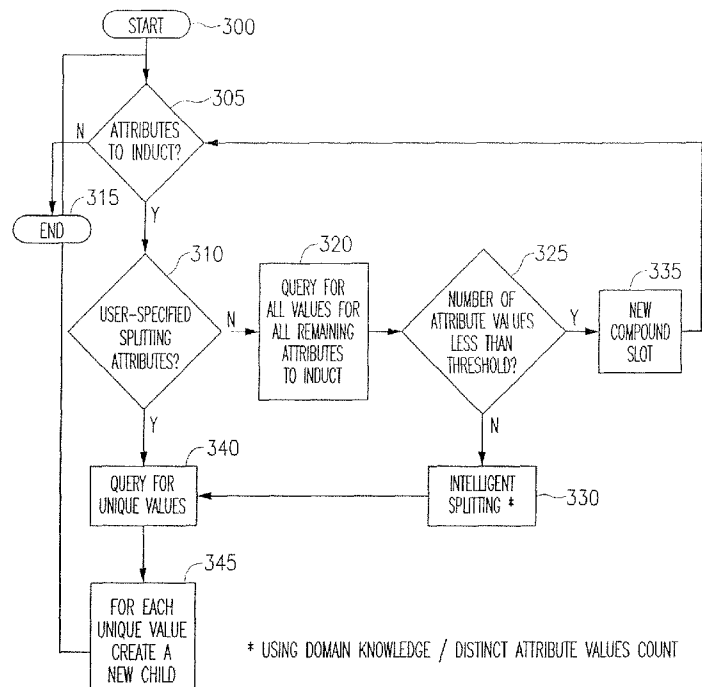
Jennifer Neville, et al., Learning Relational Probability Trees, pp. 625-630, (2003).

*Primary Examiner*—Don Wong  
*Assistant Examiner*—Merilyn P Nguyen  
(74) *Attorney, Agent, or Firm*—Joseph T. Leone, Esq.; DeWitt Ross & Stevens S.C.

(57) **ABSTRACT**

An automated process (and system) for facilitating the creation of a frame based knowledge tree for use with a configuration system is provided. In accordance with a preferred embodiment, a database induction module interacts with a user interface and a vendor provided database containing product information in the form of database files. The user sets induction preferences via a graphical user interface, and the induction module accesses product information from the client database file and automatically generates a frame based product knowledge tree in light of the user's preferences, where the frame based product knowledge tree is intended for use with a configuration system for configuring certain desired products, services, or other assemblages.

**11 Claims, 4 Drawing Sheets**



# US 7,805,461 B2

Page 2

---

U.S. PATENT DOCUMENTS						
			6,810,401	B1 *	10/2004	Thompson et al. .... 707/101
			6,865,524	B1	3/2005	Shah et al.
5,822,206	A	10/1998	Sebastian et al.			
5,956,707	A	9/1999	Chu	6,910,027	B2 *	6/2005 Bromberg et al. .... 706/46
6,260,048	B1	7/2001	Carpenter et al.	6,938,027	B1 *	8/2005 Barritz et al. .... 706/50
6,289,353	B1	9/2001	Hazlehurst et al.	6,952,688	B1	10/2005 Goldman et al.
6,336,106	B1	1/2002	Evans	2002/0103777	A1 *	8/2002 Zhang ..... 706/59
6,567,814	B1 *	5/2003	Bankier et al. .... 707/101	2003/0220949	A1	11/2003 Witt et al.
6,727,925	B1	4/2004	Bourdelais	2006/0041836	A1	2/2006 Gordon et al.

\* cited by examiner

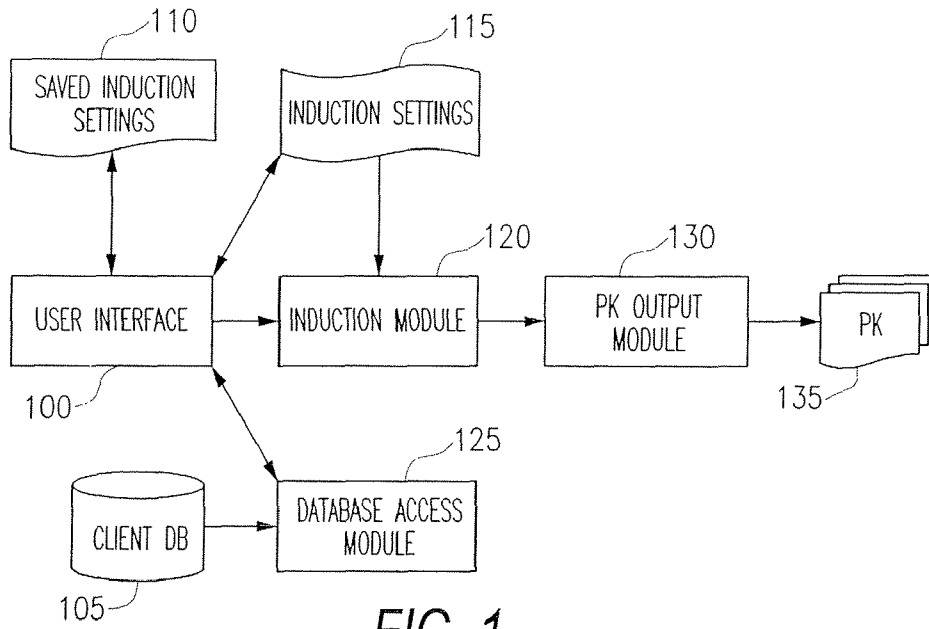


FIG. 1

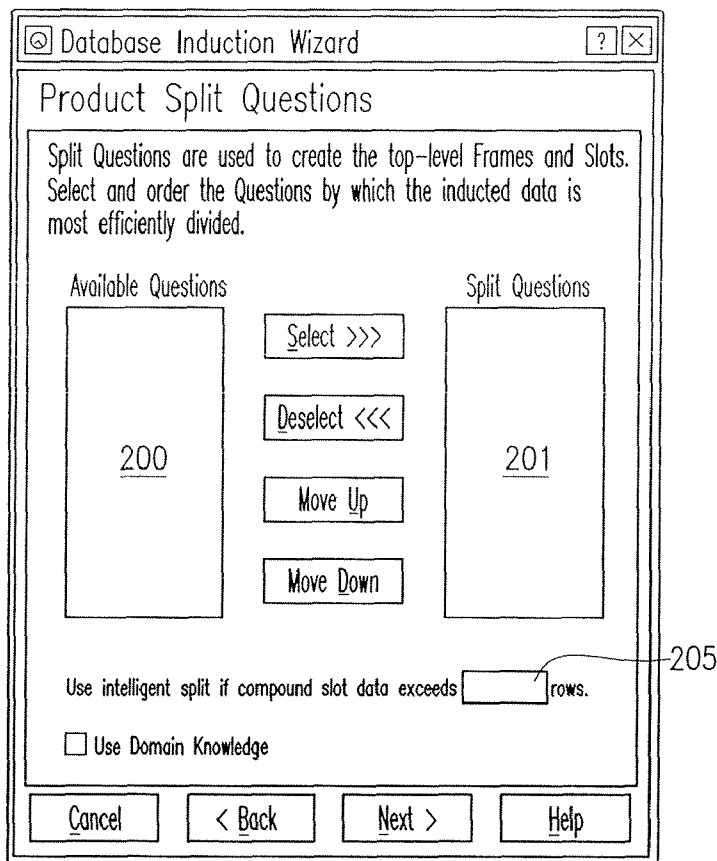


FIG. 2

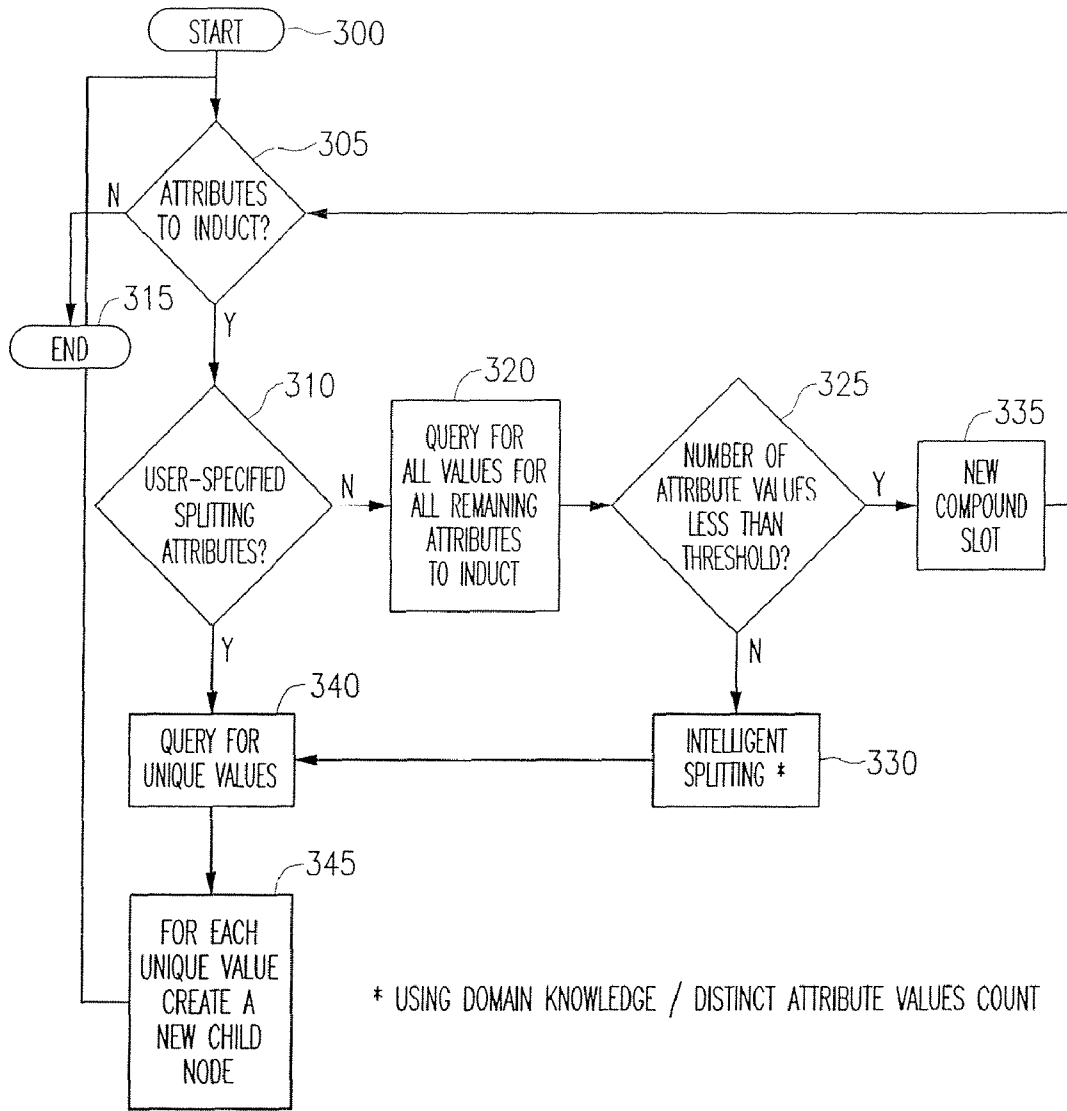


FIG. 3

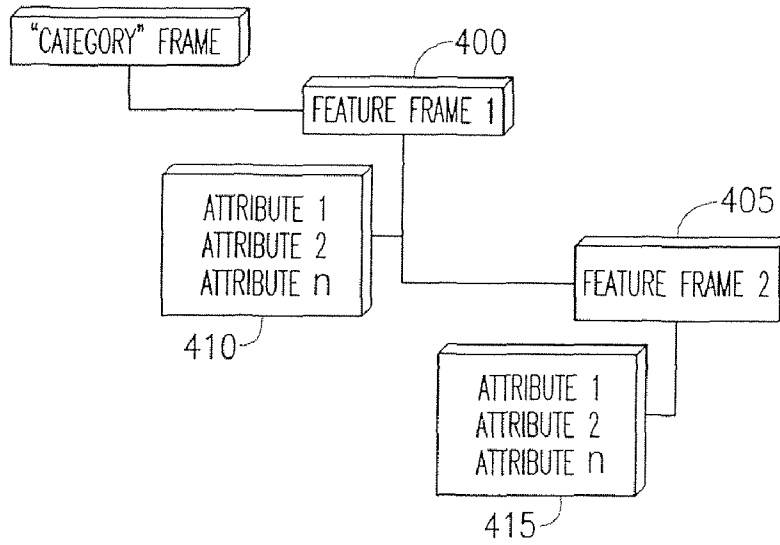


FIG. 4

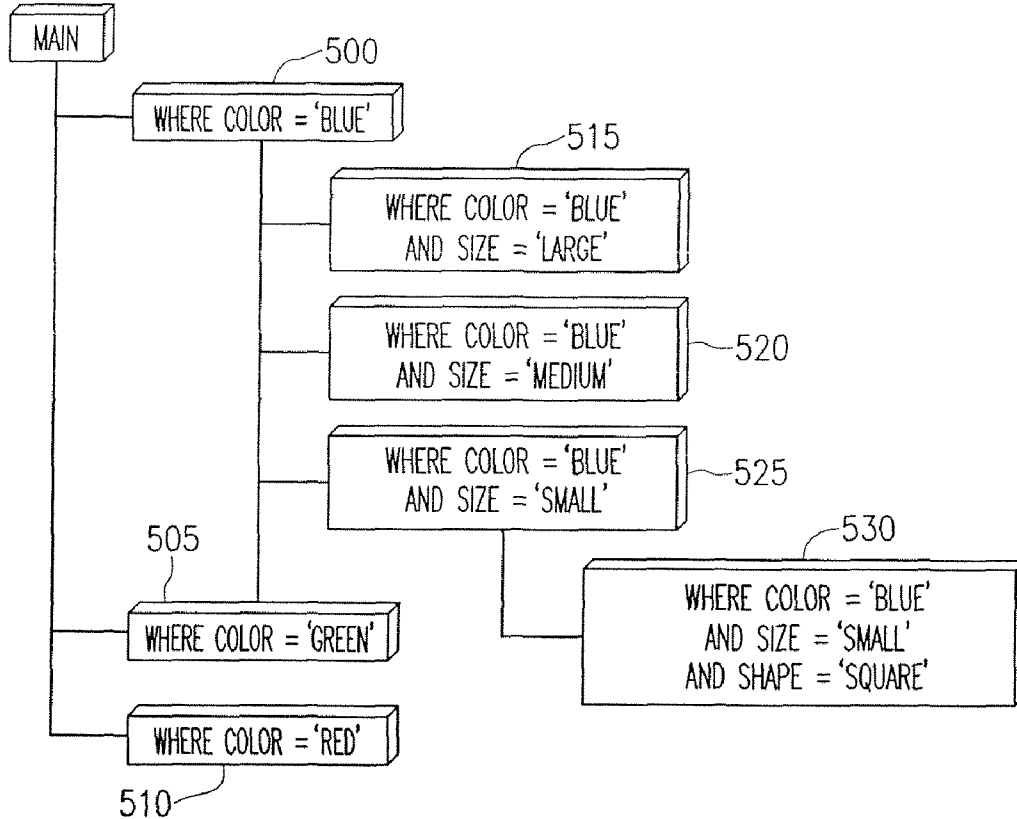


FIG. 5

# Explore Litigation Insights

Docket Alarm provides insights to develop a more informed litigation strategy and the peace of mind of knowing you're on top of things.

## Real-Time Litigation Alerts



Keep your litigation team up-to-date with **real-time alerts** and advanced team management tools built for the enterprise, all while greatly reducing PACER spend.

Our comprehensive service means we can handle Federal, State, and Administrative courts across the country.

## Advanced Docket Research



With over 230 million records, Docket Alarm's cloud-native docket research platform finds what other services can't. Coverage includes Federal, State, plus PTAB, TTAB, ITC and NLRB decisions, all in one place.

Identify arguments that have been successful in the past with full text, pinpoint searching. Link to case law cited within any court document via Fastcase.

## Analytics At Your Fingertips



Learn what happened the last time a particular judge, opposing counsel or company faced cases similar to yours.

Advanced out-of-the-box PTAB and TTAB analytics are always at your fingertips.

## API

Docket Alarm offers a powerful API (application programming interface) to developers that want to integrate case filings into their apps.

## LAW FIRMS

Build custom dashboards for your attorneys and clients with live data direct from the court.

Automate many repetitive legal tasks like conflict checks, document management, and marketing.

## FINANCIAL INSTITUTIONS

Litigation and bankruptcy checks for companies and debtors.

## E-DISCOVERY AND LEGAL VENDORS

Sync your system to PACER to automate legal marketing.