



US005377184A

United States Patent [19]

[11] Patent Number: **5,377,184**

Beal et al.

[45] Date of Patent: **Dec. 27, 1994**

[54] **METHOD OF CONTROLLING TWA LINK IN A COMMUNICATIONS ADAPTER BY MONITORING BUFFER FILL LEVELS**

[75] Inventors: Peter D. Beal, Endicott, N.Y.; Karlheinz Dutke, Deckenpfronn, Germany; Brian W. Noordyke, Owego; Michael L. Shupert, Vestal, both of N.Y.

[73] Assignee: International Business Machines Corporation, Armonk, N.Y.

[21] Appl. No.: 843,772

[22] Filed: Mar. 2, 1992

[51] Int. Cl.⁵ H04J 15/00

[52] U.S. Cl. 370/24; 370/26; 370/31

[58] Field of Search 370/24, 36, 37, 31, 370/32, 84, 94.1, 94.2, 60, 60.1, 61, 29, 108; 375/7, 8; 178/71 R, 71 A, 71 B

[56] **References Cited**

U.S. PATENT DOCUMENTS

1,264,378	4/1918	Dixon	178/17 B
3,956,589	5/1976	Weathers et al.	370/31
4,368,512	1/1983	Kyu et al.	364/200
4,422,171	12/1983	Wortley et al.	371/32
4,597,073	6/1986	Staples	370/24
4,599,719	7/1986	Breen et al.	370/24
4,651,316	3/1987	Kocan et al.	370/85.7
4,701,923	10/1987	Fukasawa et al.	371/41
4,712,229	12/1987	Nakamura	379/58
4,771,417	9/1988	Maxwell et al.	370/13
4,796,255	1/1989	Westbrook et al.	370/100
4,852,088	7/1989	Gulick et al.	370/29
4,924,456	5/1990	Maxwell et al.	370/32
5,054,034	10/1991	Hughes-Hartogs	370/108
5,179,556	1/1993	Turner	370/84
5,245,636	9/1993	Sari et al.	370/108

OTHER PUBLICATIONS

IBM TDB, vol. 34, No. 1, Jun. 1991, "Half-Duplex Wrap Test, Walking-Reset Error-Forcing Techniques", pp. 245-251.

IBM TDB, vol. 33, No. 5, Oct. 1990, "Method For Consistent Data Replication For Collection Management In A Dynamic Partially Connected Collection" pp. 454-464.

IBM TDB, vol. 33, No. 5, Oct. 1990, "Only In Chain Full-Duplex LU7 And Increased RU Size", pp. 67-68.

IBM TDB, vol. 32, No. 6A, Nov. 1989, "Method For Forward-Transistive Fully-Connected Collection Management", pp. 341-347.

IBM TDB, vol. 32, No. 3A, Aug. 1989, "Communications 'Port Manager' For Computer Systems", pp. 104-108.

IBM TDB, vol. 26, No. 3B, Aug. 1983, "Multiconfiguration Funnel Circuits", pp. 1507-1511.

IBM TDB, vol. 24, No. 8, Jan. 1992, "Testing of a Half Duplex Communication System", pp. 4116-4118.

IBM TDB, vol. 23, No. 12, May 1981, "Pseudo-Duplex Communications", pp. 5639-5641.

IBM TDB, vol. 21, No. 3, Aug. 1978, "Half-Duplex To Full-Duplex Asynchronous Adapter Architecture For Fast Turnaround Data Channels", pp. 1171-1173.

IBM TDB, vol. 20, No. 10, Mar. 1978, "Typewriter With Detached Portable Keyboard", pp. 4250-4251.

Primary Examiner—Douglas W. Olms

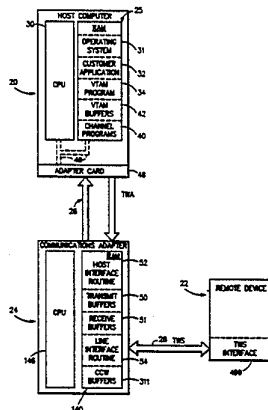
Assistant Examiner—Shick Hom

Attorney, Agent, or Firm—Arthur J. Samodovitz

[57] **ABSTRACT**

A communications adapter interconnects a first device exhibiting a two way alternate (TWA) protocol and a second device exhibiting a two way simultaneous (TWS) protocol. The communications adapter comprises a transmit buffer for storing data received from the first device via a first communication link for transmission to the second device via a second communication link, and a receive buffer for storing data received from the second device via the second communication link for transmission to the first device via the first communication link. Data can be transferred in either direction between the transmit or receive buffer and the first device faster than in the same direction between the transmit or receive buffer and the second device. To optimize the overall transfer rate in both directions between the first and second devices, the second communication link is kept busy in both directions by preventing the receive buffer from filling with data from the second device while the first device transmits data to the transmit buffer, and preventing the transmit buffer from emptying due to reading by the second device while the first device reads data from the receive buffer.

28 Claims, 9 Drawing Sheets



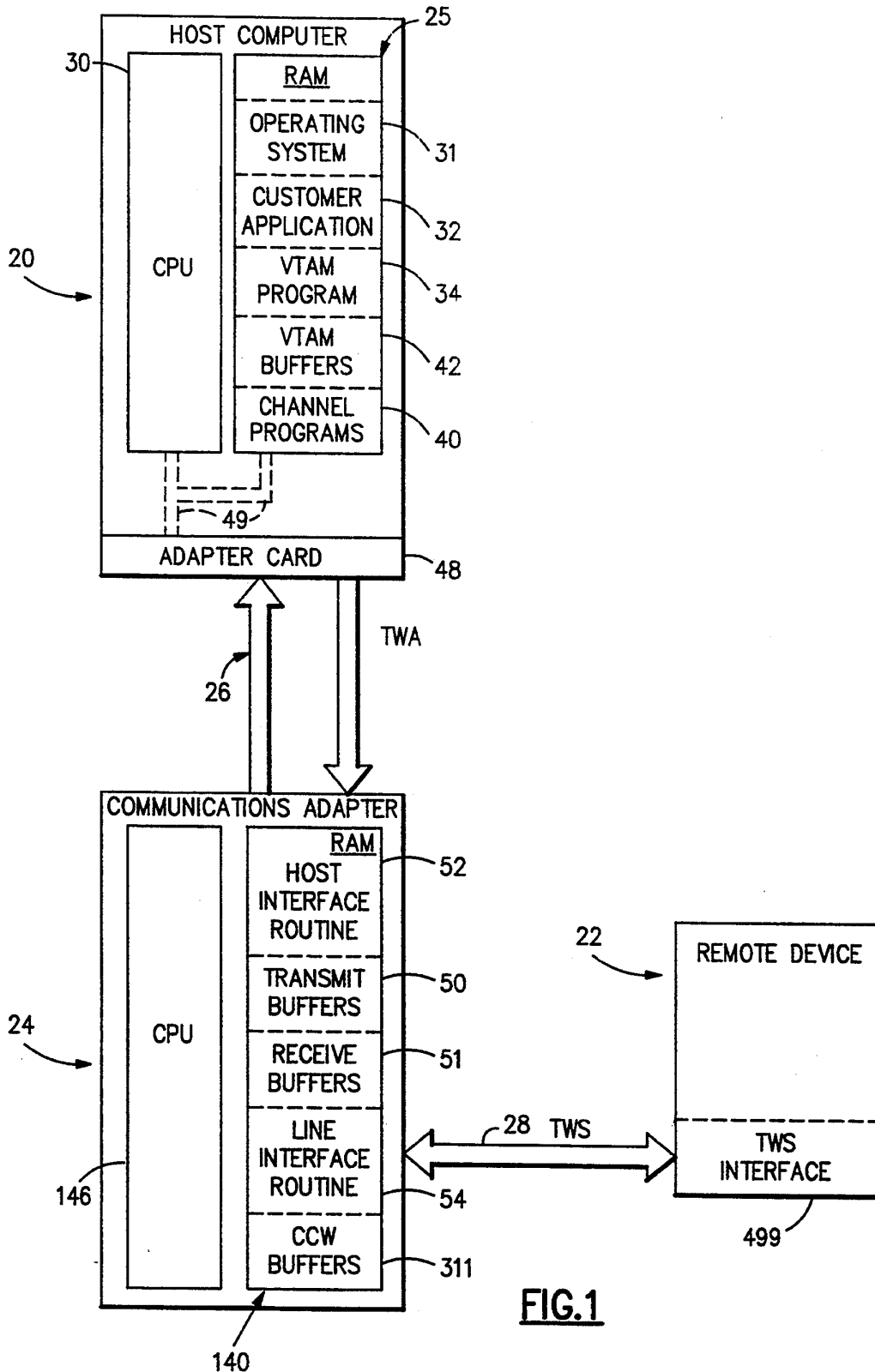


FIG.1

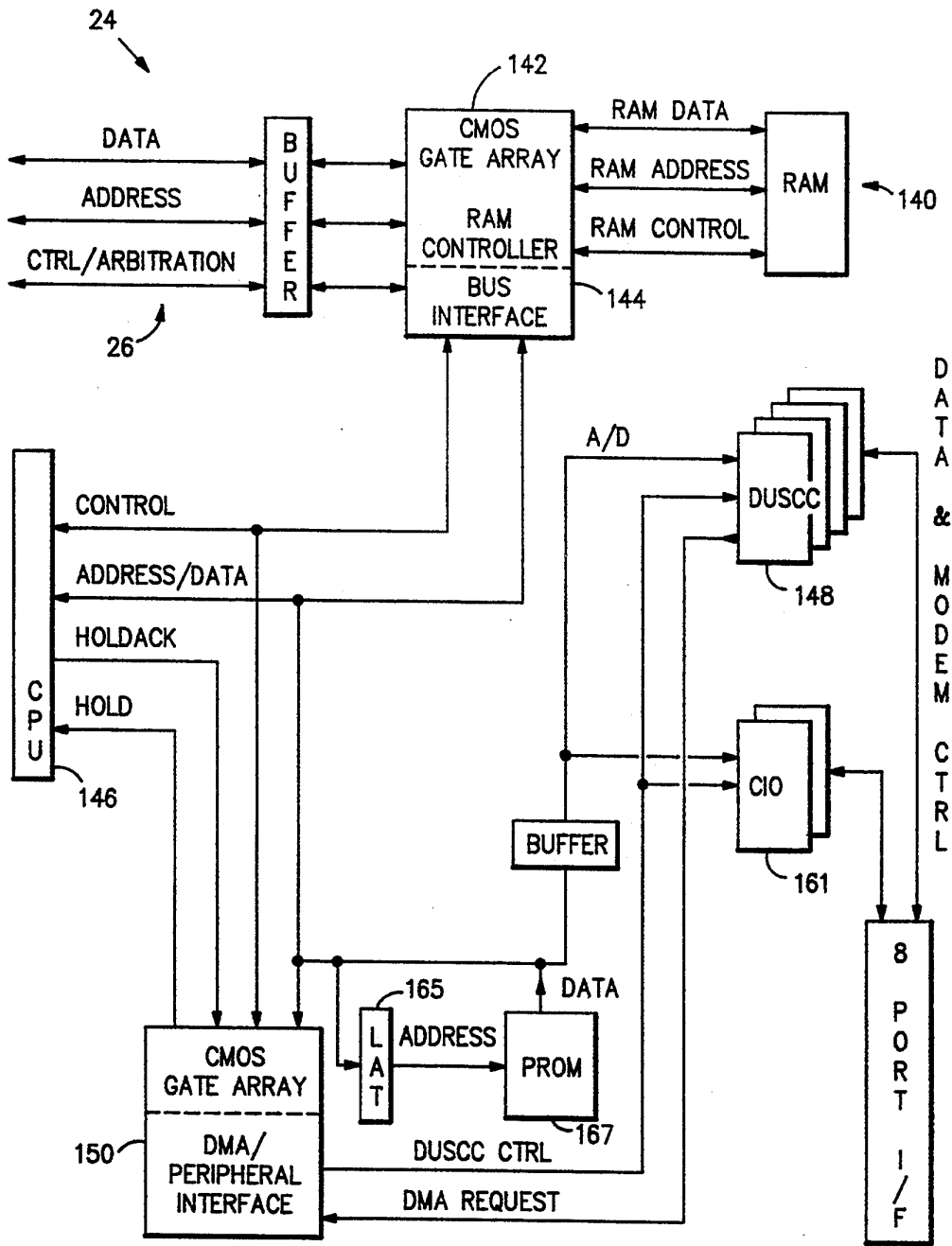


FIG. 2

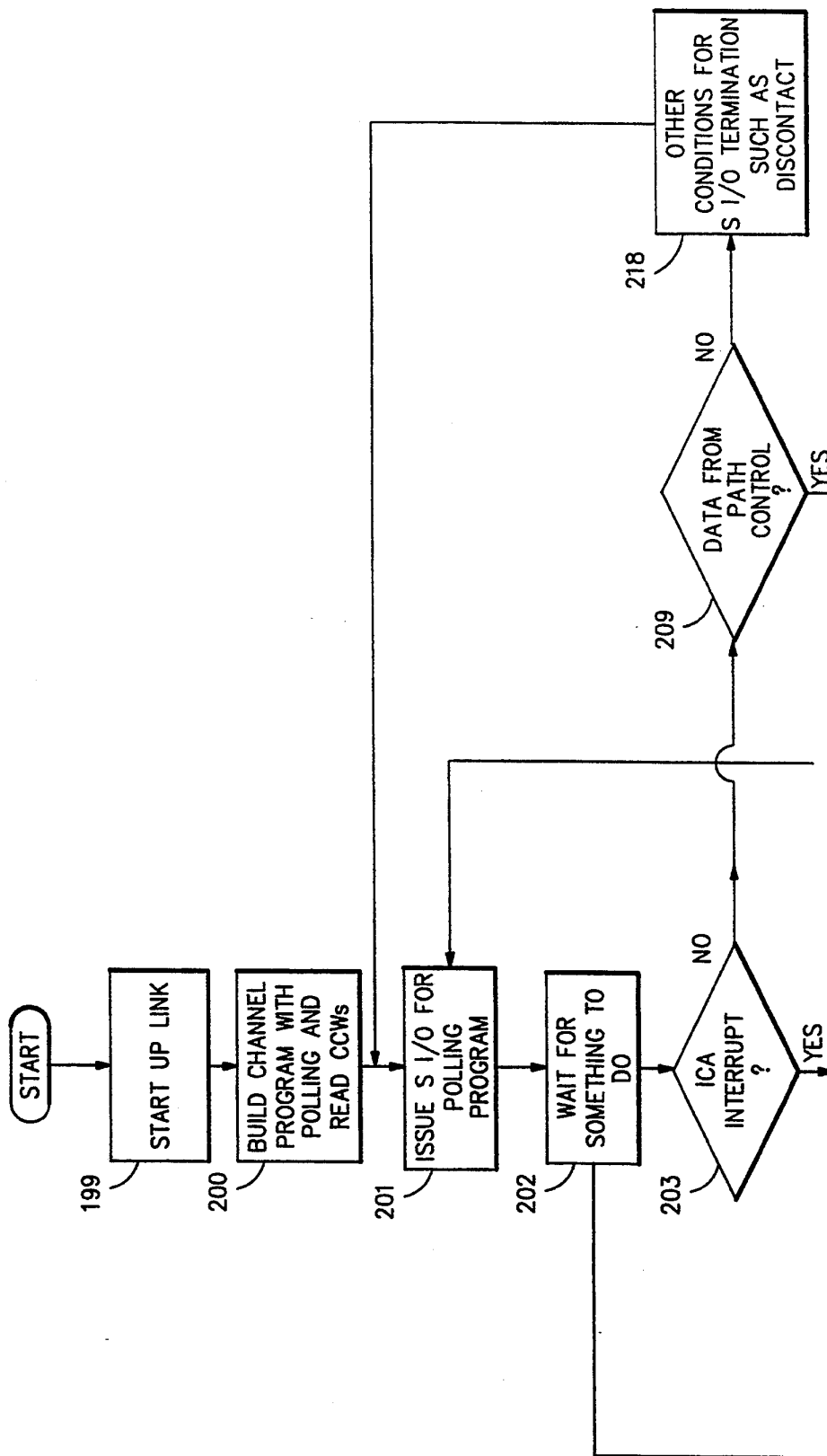


FIG. 3A

FIG. 3A
FIG. 3B
FIG. 3

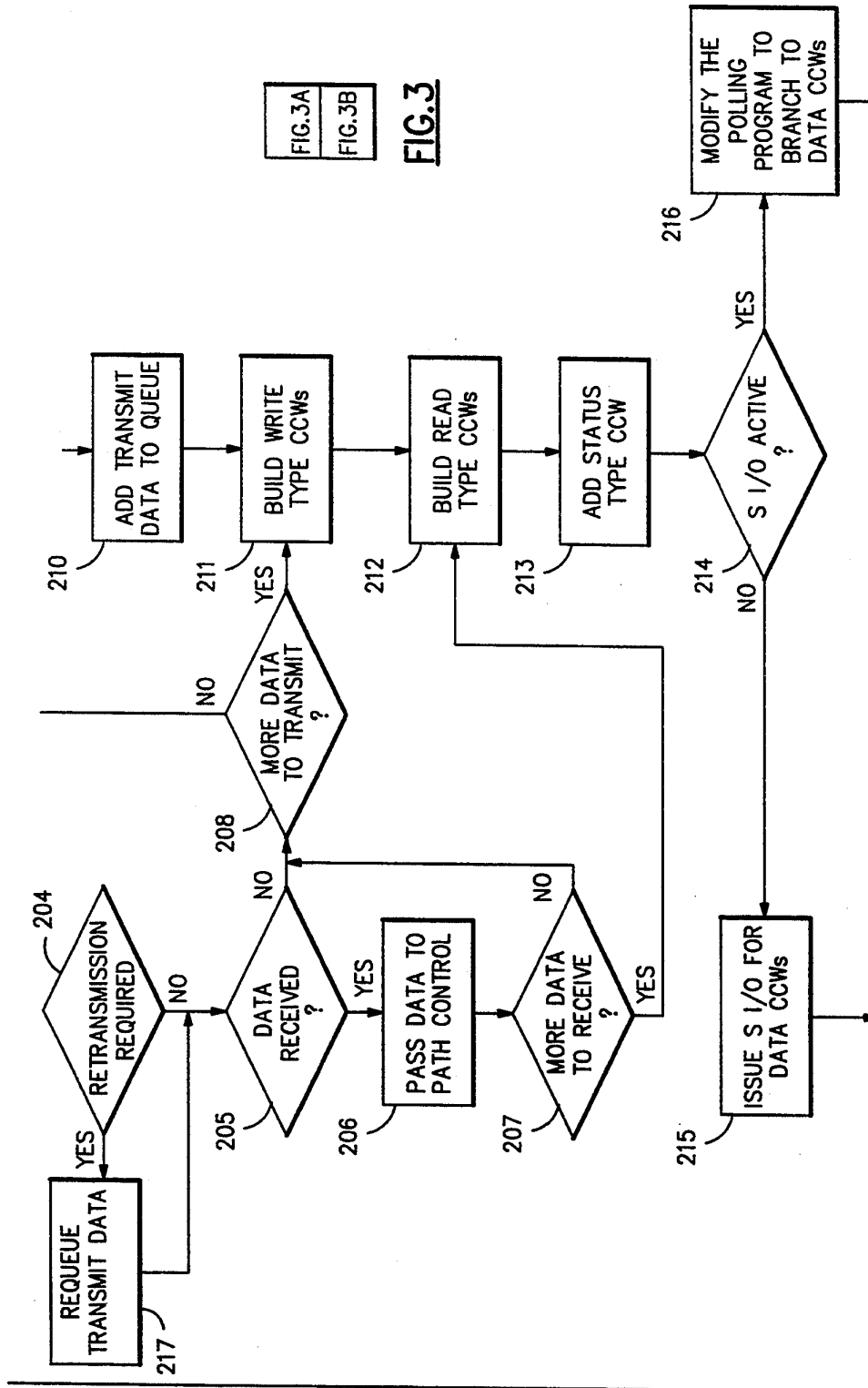


FIG. 3B

Explore Litigation Insights

Docket Alarm provides insights to develop a more informed litigation strategy and the peace of mind of knowing you're on top of things.

Real-Time Litigation Alerts



Keep your litigation team up-to-date with **real-time alerts** and advanced team management tools built for the enterprise, all while greatly reducing PACER spend.

Our comprehensive service means we can handle Federal, State, and Administrative courts across the country.

Advanced Docket Research



With over 230 million records, Docket Alarm's cloud-native docket research platform finds what other services can't. Coverage includes Federal, State, plus PTAB, TTAB, ITC and NLRB decisions, all in one place.

Identify arguments that have been successful in the past with full text, pinpoint searching. Link to case law cited within any court document via Fastcase.

Analytics At Your Fingertips



Learn what happened the last time a particular judge, opposing counsel or company faced cases similar to yours.

Advanced out-of-the-box PTAB and TTAB analytics are always at your fingertips.

API

Docket Alarm offers a powerful API (application programming interface) to developers that want to integrate case filings into their apps.

LAW FIRMS

Build custom dashboards for your attorneys and clients with live data direct from the court.

Automate many repetitive legal tasks like conflict checks, document management, and marketing.

FINANCIAL INSTITUTIONS

Litigation and bankruptcy checks for companies and debtors.

E-DISCOVERY AND LEGAL VENDORS

Sync your system to PACER to automate legal marketing.