

Stomach Cancer

What is
stomach cancer?

Let us explain
it to you.

www.anticancerfund.org | www.esmo.org



ESMO/ACF Patient Guide Series
based on the ESMO Clinical Practice Guidelines

Par Pharm., Inc.
Exhibit 1044
Par Pharm., Inc. v. Novartis AG
Case IPR2016-00084

**DOCKET
ALARM**

Find authenticated court documents without watermarks at docketalarm.com.

STOMACH CANCER: A GUIDE FOR PATIENTS

PATIENT INFORMATION BASED ON ESMO CLINICAL PRACTICE GUIDELINES

This guide for patients has been prepared by the Anticancer Fund as a service to patients, to help patients and their relatives better understand the nature of stomach cancer and appreciate the best treatment choices available according to the subtype of stomach cancer. We recommend that patients ask their doctors about what tests or types of treatments are needed for their type and stage of disease. The medical information described in this document is based on the clinical practice guidelines of the European Society for Medical Oncology (ESMO) for the management of stomach cancer. This guide for patients has been produced in collaboration with ESMO and is disseminated with the permission of ESMO. It has been written by a medical doctor and reviewed by two oncologists from ESMO including the lead author of the clinical practice guidelines for professionals. It has also been reviewed by patients' representatives from ESMO's Cancer Patient Working Group.

More information about the Anticancer Fund: www.anticancerfund.org

More information about the European Society for Medical Oncology: www.esmo.org

For words marked with an asterisk, a definition is provided at the end of the document.

Table of contents

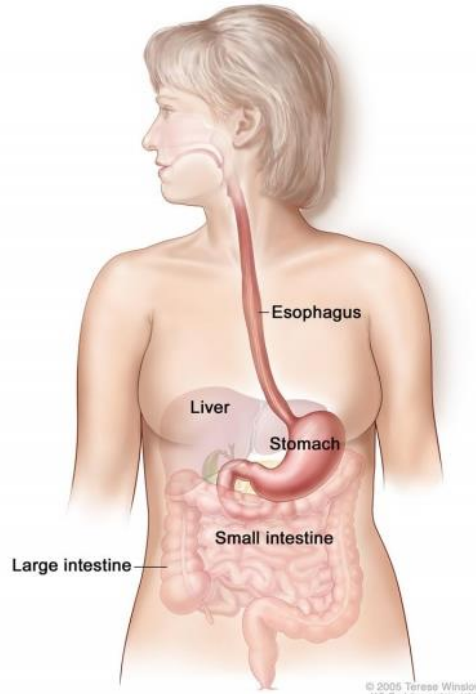
Definition of stomach cancer	3
Is stomach cancer frequent?	5
What causes stomach cancer?	6
How is stomach cancer diagnosed?	9
What it is important to know to get the optimal treatment?	11
What are the treatment options?	14
What happens after treatment?	21
Definitions of difficult words	23

This text was written by Dr Annemie Michiels (Anticancer Fund) and reviewed by Dr. Gauthier Bouche (Anticancer Fund), Dr. Svetlana Jezdic (ESMO), Dr. Alicia Okines (ESMO), Prof. David Cunningham (ESMO), Dr. William Allum (ESMO) and Pr. Lorenz Jost (ESMO's Cancer Patient Working Group).

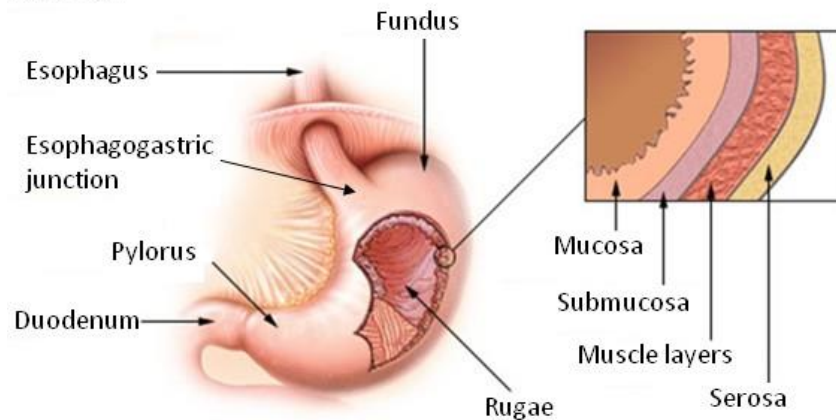
DEFINITION OF STOMACH CANCER

This definition is adapted from and is used with the permission of the National Cancer Institute (NCI) of the United States of America.

Stomach cancer is a cancer that forms in tissues lining the stomach. Most stomach cancers start from cells in the inner layer of the stomach (the mucosa) which normally make and release mucus* and other fluids. These cancers are called adenocarcinomas and represent about 90% of stomach cancers.



Stomach



Anatomy of the digestive system and layers of the stomach wall.

The mucosa* or inner layer of the stomach is made up of the epithelium* and the lamina propria*. Going deeper in the stomach wall we find the submucosa*, followed by the muscle layers, subserosa* (not shown in the picture) and the serosa*. The serosa* is the membrane* covering the outside of the stomach.

Important note regarding other types of stomach cancer

The information provided in this Guide for Patients does not apply to other types of stomach cancers. The main other types of stomach cancer include:

- **Gastric lymphomas**, which are cancers originating from cells of the immune system found in the wall of the stomach. Most gastric lymphomas are non-Hodgkin lymphomas. More information on non-Hodgkin lymphoma can be found [here](#).
- **Gastro-intestinal stromal tumors** or GIST, which are rare tumors that are believed to originate from cells in the wall of the stomach called interstitial cells of Cajal. Information on gastro-intestinal stromal tumor can be found [here](#).
- **Neuroendocrine tumors** which are tumors originating from nervous or endocrine cells of the stomach. Information on gastric neuroendocrine tumors can be found [here](#).

Diagnosis and treatment of these types of cancer are different from those for gastric adenocarcinoma.

Explore Litigation Insights

Docket Alarm provides insights to develop a more informed litigation strategy and the peace of mind of knowing you're on top of things.

Real-Time Litigation Alerts



Keep your litigation team up-to-date with **real-time alerts** and advanced team management tools built for the enterprise, all while greatly reducing PACER spend.

Our comprehensive service means we can handle Federal, State, and Administrative courts across the country.

Advanced Docket Research



With over 230 million records, Docket Alarm's cloud-native docket research platform finds what other services can't. Coverage includes Federal, State, plus PTAB, TTAB, ITC and NLRB decisions, all in one place.

Identify arguments that have been successful in the past with full text, pinpoint searching. Link to case law cited within any court document via Fastcase.

Analytics At Your Fingertips



Learn what happened the last time a particular judge, opposing counsel or company faced cases similar to yours.

Advanced out-of-the-box PTAB and TTAB analytics are always at your fingertips.

API

Docket Alarm offers a powerful API (application programming interface) to developers that want to integrate case filings into their apps.

LAW FIRMS

Build custom dashboards for your attorneys and clients with live data direct from the court.

Automate many repetitive legal tasks like conflict checks, document management, and marketing.

FINANCIAL INSTITUTIONS

Litigation and bankruptcy checks for companies and debtors.

E-DISCOVERY AND LEGAL VENDORS

Sync your system to PACER to automate legal marketing.