

(12) UK Patent Application (19) GB (11) 2 309 774 (13) A

(43) Date of A Publication 06.08.1997

(21) Application No 9701822.0

(22) Date of Filing 29.01.1997

(30) Priority Data

(31) 08037108 (32) 01.02.1996 (33) JP

(71) Applicant(s)

Koito Manufacturing Co., Ltd.

(Incorporated in Japan)

8-3, Takanawa 4-chome, Minato-ku, Tokyo, Japan

(72) Inventor(s)

Kazuki Takahashi

(74) Agent and/or Address for Service

Gill Jennings & Every  
Broadgate House, 7 Eldon Street, LONDON,  
EC2M 7LH, United Kingdom

(51) INT CL<sup>6</sup>

B60Q 1/115

(52) UK CL (Edition O )

F4R RMC R364 R41Y R765 R78X R789  
U1S S1934

(56) Documents Cited

GB 2115929 A EP 0699559 A1 EP 0554663 A2  
US 5195816 A US 4204270 A

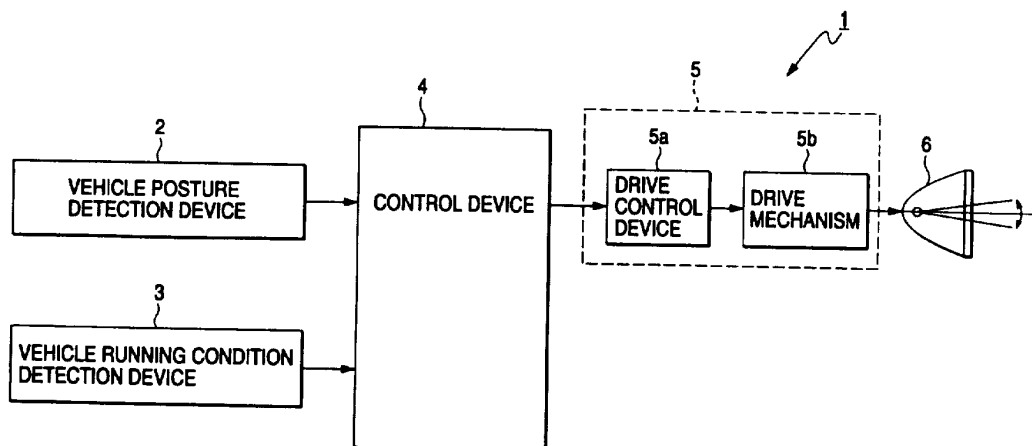
(58) Field of Search

UK CL (Edition O ) F4R RMC  
INT CL<sup>6</sup> B60Q 1/08 1/10 1/105 1/11 1/115  
Online : WPI, CLAIMS, JAPIO

(54) Controlling direction of vehicle lights

(57) The illumination direction of lights in a vehicle is controlled by detecting vehicle posture (eg height and/or inclination) and whether the vehicle is stationary and/or has passed through a change of road gradient, and directing the illumination of the lights to a desired direction in accordance with signals received from the posture detection device. Control means effect the direction change only when the vehicle is stationary and/or has passed through a change of gradient. Reference values related to time may be used to prevent unwanted light movements due to rough road surfaces and sudden stops or starts.

FIG. 1



GB 2 309 774

FIG. 1

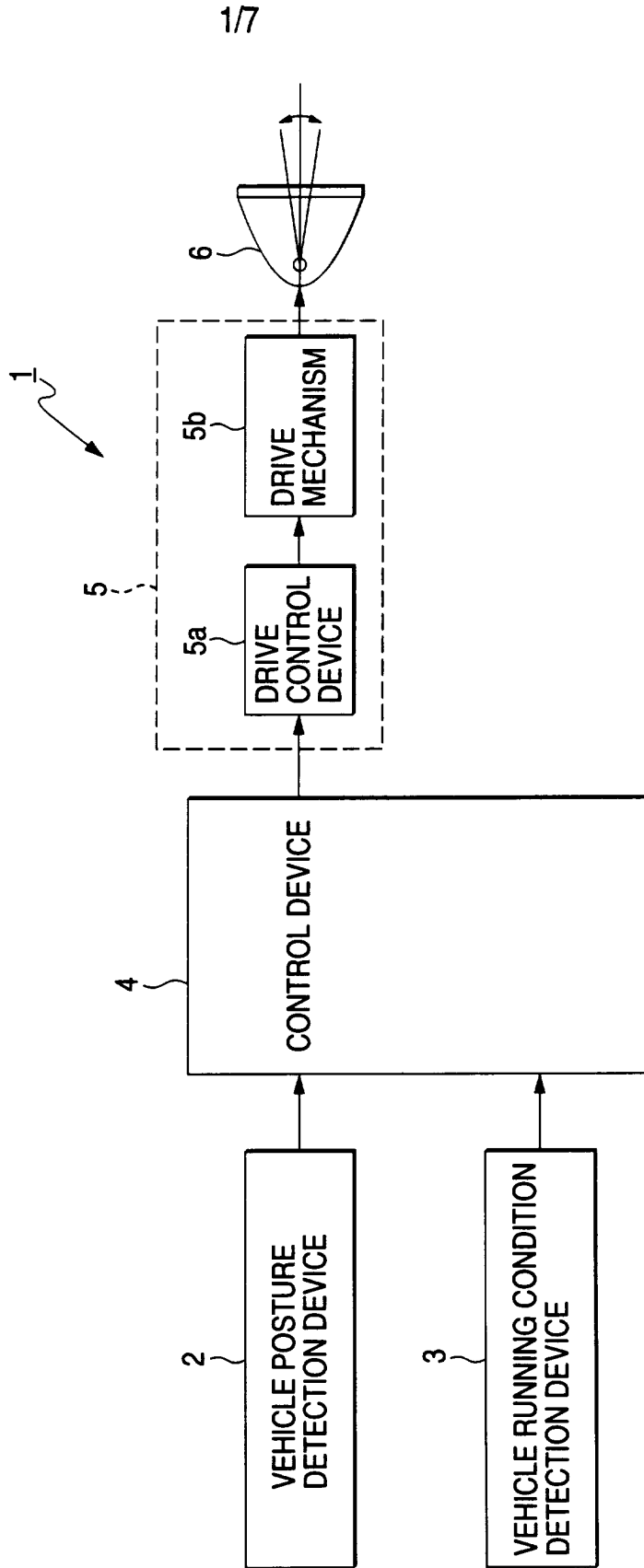


FIG. 2

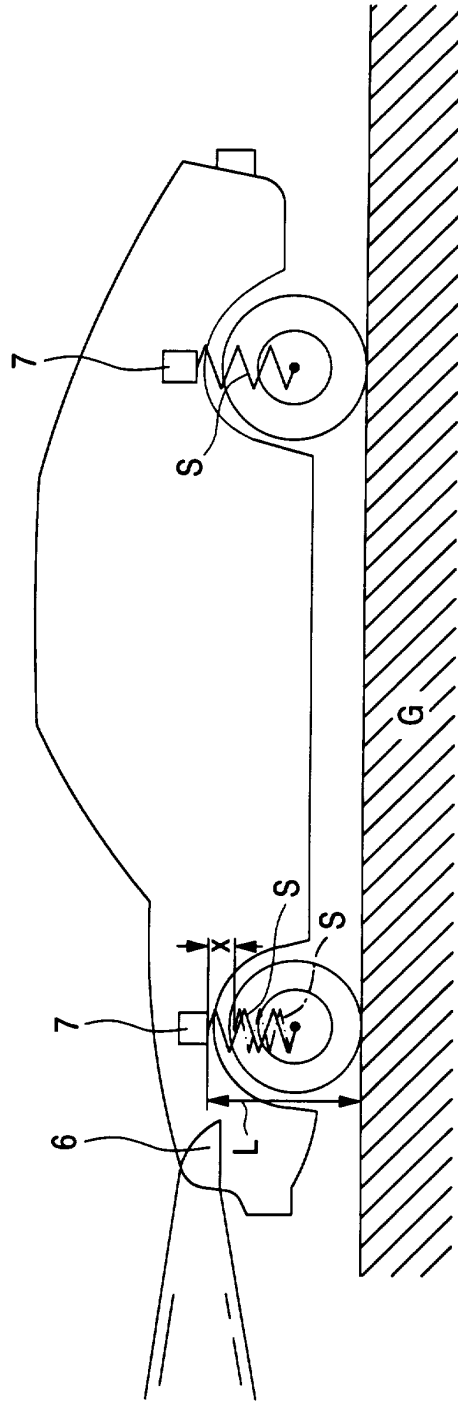


FIG. 3

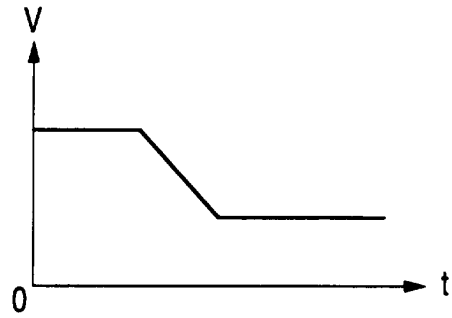


FIG. 4

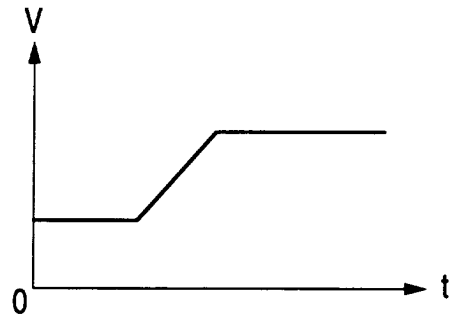


FIG. 5

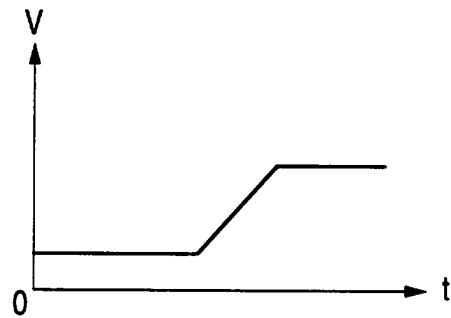


FIG. 6

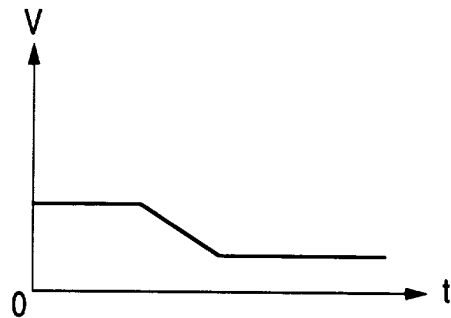
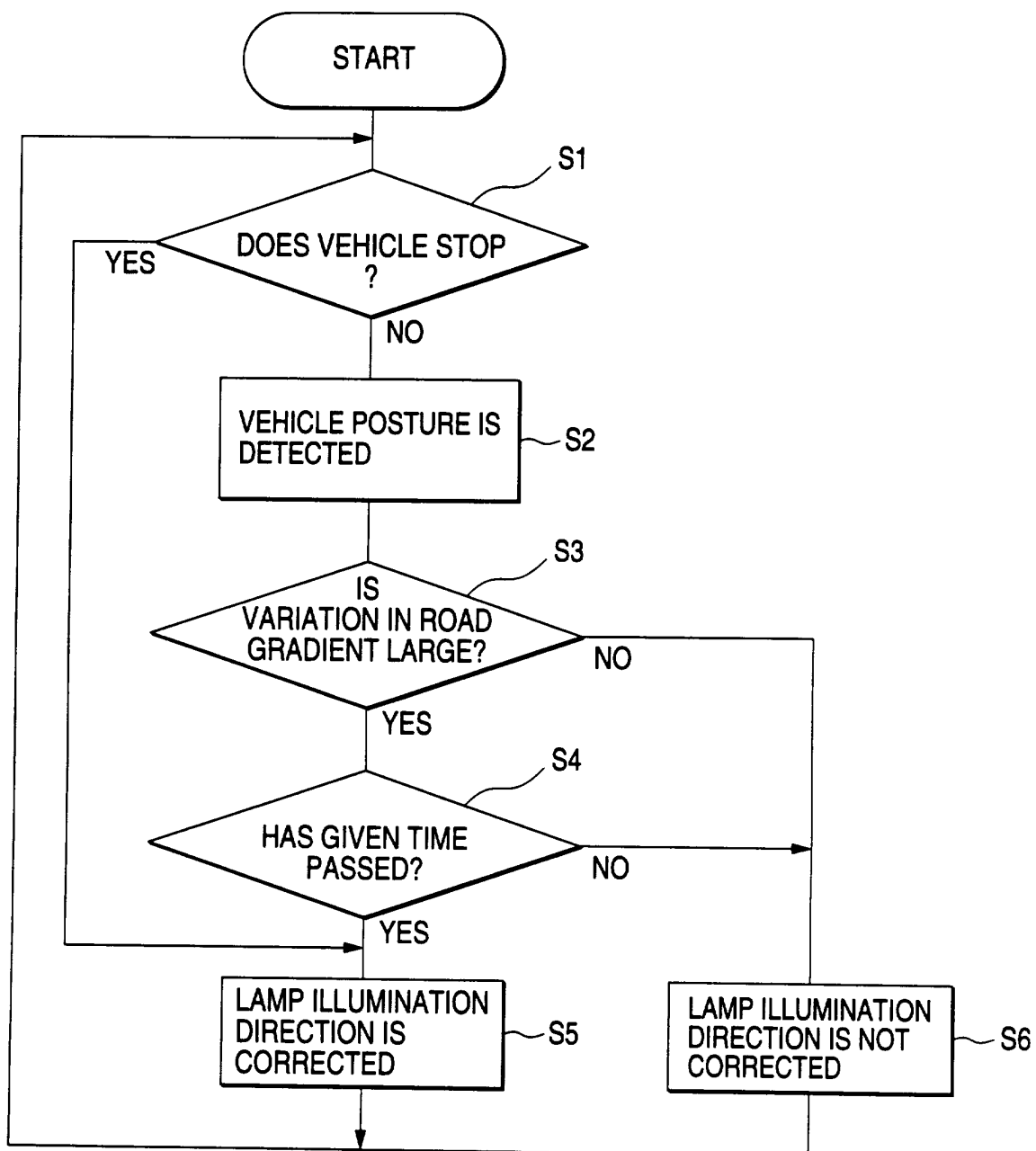


FIG. 7



# Explore Litigation Insights

Docket Alarm provides insights to develop a more informed litigation strategy and the peace of mind of knowing you're on top of things.

## Real-Time Litigation Alerts



Keep your litigation team up-to-date with **real-time alerts** and advanced team management tools built for the enterprise, all while greatly reducing PACER spend.

Our comprehensive service means we can handle Federal, State, and Administrative courts across the country.

## Advanced Docket Research



With over 230 million records, Docket Alarm's cloud-native docket research platform finds what other services can't. Coverage includes Federal, State, plus PTAB, TTAB, ITC and NLRB decisions, all in one place.

Identify arguments that have been successful in the past with full text, pinpoint searching. Link to case law cited within any court document via Fastcase.

## Analytics At Your Fingertips



Learn what happened the last time a particular judge, opposing counsel or company faced cases similar to yours.

Advanced out-of-the-box PTAB and TTAB analytics are always at your fingertips.

## API

Docket Alarm offers a powerful API (application programming interface) to developers that want to integrate case filings into their apps.

## LAW FIRMS

Build custom dashboards for your attorneys and clients with live data direct from the court.

Automate many repetitive legal tasks like conflict checks, document management, and marketing.

## FINANCIAL INSTITUTIONS

Litigation and bankruptcy checks for companies and debtors.

## E-DISCOVERY AND LEGAL VENDORS

Sync your system to PACER to automate legal marketing.