

# The Drug of Abuse $\gamma$ -Hydroxybutyrate Is a Substrate for Sodium-Coupled Monocarboxylate Transporter (SMCT) 1 (SLC5A8): Characterization of SMCT-Mediated Uptake and Inhibition

Dapeng Cui and Marilyn E. Morris

Department of Pharmaceutical Sciences, School of Pharmacy and Pharmaceutical Sciences, University at Buffalo, State University of New York, Amherst, New York

Received February 18, 2009; accepted April 20, 2009

## ABSTRACT:

$\gamma$ -Hydroxybutyric acid (GHB), a drug of abuse, is a substrate of monocarboxylate transporters (MCTs). Sodium-coupled monocarboxylate transporter 1 (SMCT1; SLC5A8) is expressed in kidney, thyroid gland, neurons, and intestinal tract and exhibits substrate specificity similar to that of the proton-dependent MCT (SLC16A) family. The role of SMCT1 in GHB disposition has not been determined. In this study we characterized the driving force, transport kinetics, and inhibitors of GHB uptake, as well as expression of SMCT and MCT isoforms, in rat thyroid follicular (FRTL-5) cells. GHB, as well as the monocarboxylates butyrate and D-lactate, exhibited sodium-dependent uptake at pH 7.4, which could be described with a simple Michaelis-Menten equation plus a diffusional component [ $K_m$   $0.68 \pm 0.30$  mM,  $V_{max}$   $3.50 \pm 1.58$  nmol  $\cdot$  mg $^{-1}$   $\cdot$  min $^{-1}$ , and diffusional clearance (P)  $0.25 \pm 0.08$   $\mu$ l  $\cdot$  mg $^{-1}$   $\cdot$  min $^{-1}$ ]. In the absence of sodium, GHB uptake was significantly

increased at lower pH, suggesting proton-gradient dependent transport. Reverse transcriptase-polymerase chain reaction and Western analyses demonstrated the expression of SMCT1, MCT1, and MCT2 in FRTL-5 cells, supporting the activity results. Sodium-dependent GHB uptake in FRTL-5 cells was inhibited by MCT substrates (D-lactate, L-lactate, pyruvate, and butyrate), nonsteroidal anti-inflammatory drugs (ibuprofen, ketoprofen, and naproxen), and probenecid. IC<sub>50</sub> values for L-lactate, ibuprofen, ketoprofen, and probenecid were 101, 31.6, 64.4, and 380  $\mu$ M, respectively. All four inhibitors also significantly inhibited GHB uptake in rat MCT1 gene-transfected MDA/MB231 cells, suggesting they are not specific for SMCT1. Luteolin and  $\alpha$ -cyano-4-hydroxycinnamate represent specific proton-dependent MCT inhibitors. Our findings indicate that GHB is a substrate for both sodium- and proton-dependent MCTs and identified specific inhibitors of MCTs.

Two members of the sodium-coupled monocarboxylate transporter family (SMCT) have been cloned to date, the high-affinity transporter SMCT1 (SLC5A8) and the low-affinity SMCT2 (SLC5A12) (Rodriguez et al., 2002; Srinivas et al., 2005). The *SLC5A8* gene was originally identified from a kidney cDNA library as a close structural relative of human Na<sup>+</sup>/I<sup>-</sup> symporter (*SLC5A5*) (Rodriguez et al., 2002). SMCT1 protein has been detected in kidney, intestine, salivary gland, thyroid gland, brain, and retina (Ganapathy et al., 2008). Less is known about SMCT2. mRNA expression of SMCT2 was detected in kidney, small intestine, and skeletal muscle and to a lesser extent in brain and retina. Functional characterization of SMCT2 suggested substrate specificity similar to that of SMCT1. However, the affinities of SMCT2 for monocarboxylate substrates are approximately 35- to 80-fold lower than those of SMCT1 (Srinivas et al., 2005).

SMCT1 mediates transport of monocarboxylic acids such as lactate,

pyruvate, propionate, butyrate, nicotinate, and short-chain fatty acids. Substrates of SMCT1 are similar to those of MCTs, a proton-coupled monocarboxylate transporter family (Gopal et al., 2005; Spanier and Drewes, 2007; Morris and Felmler, 2008). The physiological function of SMCT1 may relate to maintaining homeostasis of short monocarboxylates, but clear evidence of its function is currently lacking. In the kidney, SMCT1 is expressed in the apical membrane of tubular epithelial cells and is mainly limited to the S3 section of the proximal tubule. It was hypothesized that SMCT1 is involved in renal reabsorption of lactate and pyruvate (Gopal et al., 2007b; Ganapathy et al., 2008), because sodium-dependent transport of these monocarboxylates has been observed in the kidney (Barac-Nieto et al., 1980; Mengual et al., 1989). Moreover, *SLC5A8*-deficient or knockout mice exhibited increased urinary excretion of lactate (Frank et al., 2008). In the brain, SMCT1 exhibits a neuron-specific distribution and may mediate cellular uptake of lactate and ketone bodies, the primary energy substrates of neurons (Martin et al., 2006). Besides the postulated physiological functions, several reports suggested a tumor-suppressing role for SMCT1. High frequency of aberrant methylation or down-regulation of the *SLC5A8* gene has been observed in human colon cancer, papillary thyroid carcinomas, pancreatic cancer, prostate

This work was supported by the National Institutes of Health National Institute on Drug Abuse [Grant DA023223].

Article, publication date, and citation information can be found at <http://dmd.aspetjournals.org>.

doi:10.1124/dmd.109.027169.

**ABBREVIATIONS:** SMCT, sodium-dependent monocarboxylate transporter; MCT, monocarboxylate transporter; GHB,  $\gamma$ -hydroxybutyrate; TSH, thyroid-stimulating hormone; BHB,  $\beta$ -hydroxybutyrate; CHC,  $\alpha$ -cyano-4-hydroxycinnamate; DIDS, 4,4'-diisothiocyanatostilbene-2,2'-disulfonic acid; RT, reverse transcriptase; PCR, polymerase chain reaction; MES, 2-(*N*-morpholino)ethanesulfonic acid; ANOVA, analysis of variance; AIC, Akaike information criterion; NSAID, nonsteroidal anti-inflammatory drug.

tumor, acute myeloid leukemia, and glioma formation (Ganapathy et al., 2008; Park et al., 2008).

The role of SMCT1 in drug transport has not been determined. The expression pattern in kidney and intestine indicates that SMCT1 may play a role in the oral bioavailability and renal reabsorption of monocarboxylate drugs. Studies using *Xenopus laevis* oocytes expressing human *SLC5A8* showed that benzoate, salicylate, and 5-aminosalicylate were transported by SMCT1 (Gopal et al., 2007a). In the present investigation, we characterized transport of  $\gamma$ -hydroxybutyrate (GHB) in rat thyroid follicular FRTL-5 cells. GHB is an endogenous short-chain fatty acid formed from GABA and is present in the brain, heart, kidney, liver, lung, muscle, and gastrointestinal tract (Maitre, 1997; Tedeschi et al., 2003). The therapeutic use of GHB includes treatment of the sleep disorder narcolepsy with cataplexy (Mamelak et al., 1986) and alcohol withdrawal syndrome (Poldrugo and Addolorato, 1999). GHB is also a recreational drug, abused because of its euphoric effects (Wong et al., 2004). An overdose of GHB can lead to adverse effects such as seizures, dizziness, nausea, vomiting, coma, and even death (Mason and Kerns, 2002). GHB exhibits nonlinear pharmacokinetics in humans (Palatini et al., 1993) and rats (Lettieri and Fung, 1979), and the nonlinearity is related to capacity-limited metabolism (Ferrara et al., 1992), saturable absorption (Arena and Fung, 1980), and nonlinear renal clearance (Morris et al., 2005). Our previous studies have demonstrated that MCT1 mediates GHB transport in rat kidney membrane vesicles, in the human kidney cell line HK-2, and in rat MCT1-transfected MDA-MB231 cells (Wang et al., 2006). In vivo studies have suggested that saturation of the MCT1-mediated renal reabsorption of GHB contributes to the increase of renal clearance at high GHB doses (Morris et al., 2005) and may represent a novel clinical treatment for GHB intoxication (Morris et al., 2005; Wang and Morris, 2007). However, the role of SMCTs in the disposition of GHB is largely unknown.

The similarity of substrates of SMCTs and MCTs suggests that GHB may be a substrate of SMCT1. In this investigation, SMCT1-mediated transport of GHB and other MCT substrates, D-lactate and butyrate, was characterized using FRTL-5 cells, a rat thyroid-derived cell line that maintains thyrocyte functions such as hormonal responsiveness, iodide uptake, and thyroglobulin synthesis (Ambesi-Impimbato et al., 1980). This cell line was chosen because expression of SMCT1 and the sodium-dependent transport of nicotinate have been observed in FRTL-5 cells (Paroder et al., 2006). Our overall goal is to characterize the SMCT-mediated transport of GHB and to identify specific transport inhibitors to develop strategies to treat GHB overdoses through inhibition of SMCT1-mediated transport in the body.

The objectives of the study were 1) to evaluate the expression of SMCT1, 2) to examine the effect of sodium on the transport of GHB, as well as the monocarboxylate substrates D-lactate and butyrate, 3) to characterize the driving forces and concentration-dependent kinetics of GHB uptake, and 4) to identify potential inhibitors of SMCT1 in FRTL-5 cells.

### Materials and Methods

**Materials.** Coon's modified Ham's F-12 medium and calf bovine serum were obtained from American Type Culture Collection (Manassas, VA). Dulbecco's modified Eagle's medium, trypsin-EDTA, fetal bovine serum, Geneticin (G-418), penicillin/streptomycin, and collagenase were obtained from Invitrogen (Carlsbad, CA). Bovine thyrotropic hormone (TSH), insulin, hydrocortisone, transferrin, somatostatin, glycyl-L-histidyl-L-lysyl acetate, D-lactate, L-lactate, sodium GHB, butyrate, pyruvate, DL- $\beta$ -hydroxybutyrate (BHB), ketoprofen, ibuprofen, naproxen,  $\alpha$ -cyano-4-hydroxycinnamate (CHC), 3',4',5,7-tetrahydroxyflavone (luteolin), phloretin, probenecid, 4,4'-diisothiocyantostilbene-2,2'-disulfonic acid (DIDS), HEPES, and MES were

obtained from American Radiochemicals (St. Louis, MO). Biodegradable counting scintillate was obtained from GE Healthcare (Little Chalfont, Buckinghamshire, UK).

**Cell Culture.** FRTL-5 cells (American Type Culture Collection) were cultured as described previously (Beguino et al., 1987). In brief, cells were grown in Coon's modified Ham's F-12 medium supplemented with 5% calf bovine serum and a mixture of hormones consisting of 10 U/ml TSH, 0.01 mg/ml insulin, 10 nM hydrocortisone, 5  $\mu$ g/ml transferrin, 10 ng/ml somatostatin, and 10 ng/ml glycyl-L-histidyl-L-lysyl acetate. Cells were incubated at 37°C in a humidified atmosphere with 5% CO<sub>2</sub>/95% air. Culture medium was changed every 3 to 4 days, and cells were passaged biweekly using 0.05% trypsin-EDTA with 20 U/ml collagenase. For uptake studies, cells were seeded in 35 mm<sup>2</sup> plastic dishes or six-well plates and maintained for 1 week in the culture medium free of TSH. Rat MCT1 gene-transfected MDA-MB231 cells and mock cells were kindly provided by Professors I. Tamai and A. Tsuji (Kanazawa University, Kanazawa City, Japan) and cultured as described previously (Wang et al., 2006). In brief, cells were cultured at 37°C with 5% CO<sub>2</sub>/95% air in Dulbecco's modified Eagle's medium with addition of 10% fetal bovine serum, 0.5 mg/ml Geneticin, 100 units of penicillin, and 100  $\mu$ g/ml streptomycin. Culture medium was changed every 2 to 3 days, and cells were passaged weekly. Two or 3 days before the uptake studies, cells were seeded in six-well plates with a density of  $1 \times 10^5$  cells/well.

**Cellular Uptake Study.** Culture medium was removed, and cells were washed three times with uptake buffer (137 mM NaCl, 5.4 mM KCl, 2.8 mM CaCl<sub>2</sub>, 1.2 mM MgCl<sub>2</sub> · 6H<sub>2</sub>O, and 10 mM HEPES, pH 7.4). One milliliter of uptake buffer containing [<sup>3</sup>H]GHB, [<sup>3</sup>H]D-lactate, or [<sup>14</sup>C]butyrate was added to the dishes. For the time course study, the cells were incubated at room temperature for 0.5, 1, 3, 5, 10, 30, and 60 min. For the pH-dependent study, the cells were incubated with uptake buffer with different pH values (pH 5.5, 6.0, 6.5, 7.0, and 7.4), whereas for the sodium-dependent study, the cells were incubated with sodium buffer (137 mM NaCl, 5.4 mM KCl, 2.8 mM CaCl<sub>2</sub>, 1.2 mM MgCl<sub>2</sub> · 6H<sub>2</sub>O, and 10 mM HEPES, pH 7.4) or sodium-free buffer (137 mM N-methyl-D-glucamine, 5 mM KCl, 1 mM CaCl<sub>2</sub>, 1 mM MgCl<sub>2</sub>, and 10 mM HEPES, pH 7.4). Inhibitors examined in the cellular uptake studies included D-lactate, L-lactate, butyrate, pyruvate, BHB, ketoprofen, ibuprofen, naproxen, CHC, luteolin, phloretin, probenecid, and DIDS. The uptake was stopped by aspirating the buffer and washing three times with ice-cold stop buffer (137 mM NaCl, 5.4 mM KCl, 2.8 mM CaCl<sub>2</sub>, 1.2 mM MgCl<sub>2</sub> · 6H<sub>2</sub>O, and 10 mM HEPES, pH 7.4). The cells were lysed in 1 ml of lysis buffer (0.3 N NaOH and 1% SDS) for 2 h. Radioactivity was determined by mixing 3 ml of scintillation liquid with 400  $\mu$ l of lysed sample and counting with a liquid scintillation counter (1900 CA, Tri-Carb liquid scintillation analyzer; PerkinElmer Life and Analytical Sciences, Waltham, MA). Protein concentrations were determined by the bicinchoninic acid protein assay with bovine serum albumin as the protein standard. The results were normalized for the protein content of the cell lysate.

**RT-PCR.** Total RNA was isolated from cells using the SV Total RNA Isolation System (Promega, Madison, WI). First-strand cDNA was synthesized from 10  $\mu$ g of total RNA by SuperScript II reverse transcriptase (Invitrogen) with oligo(dT)<sub>12-18</sub> primer. PCR was performed using an Eppendorf Mastercycler gradient PCR system. The primers specific to rat MCT1 and MCT2 were designed using Primer Express software and checked with the Blast analysis in the GenBank database for sequence identity (MCT1, forward 5'-ACCCGAGACATCCGAAACC-3' and reverse 5'-AATTGTCCACTGTCTGCACGG-3'; MCT2, forward 5'-CCTCTTTGAATGTCTTATGACCA-3' and reverse 5'-TATATCGAGCAATTACCAGCCAG-3'; MCT3, forward 5'-GAGGATGTGGAGGCTGAGAG-3' and reverse 5'-GC-CACCTATGGACTCGTGAT-3'; MCT4, forward 5'-GGGTCATCACTG-GCTTGGGT-3' and reverse 5'-GGAACACGGGACTGCCTGC-3'; SMCT1, forward 5'-GTTGCTGGTGGGGATTCTTA-3' and reverse 5'-CCACTGTG-TCTGGGAAGTT-3', and SMCT2, forward 5'-GAGAGCTTGTTGCTGT-TCCC-3' and reverse 5'-GGAGTGGCTTAAGCTTGAC-3'). The PCR reaction mixtures contained 200  $\mu$ M concentrations of each dNTP, 0.1  $\mu$ M concentrations of each forward and reverse primer, and 0.5 U/reaction Taq DNA polymerase in 1 $\times$  PCR buffer (500 mM KCl, 100 mM Tris-HCl, pH 8.3,

and 72°C for 0.5 min. The PCR products were separated by electrophoresis on 2% agarose gel, stained by ethidium bromide, and visualized under UV light.

**Data Analysis.** The uptake data are presented as the mean  $\pm$  S.D. Data analysis was performed using GraphPad Prism (GraphPad Software Inc., San Diego, CA). Differences with  $p < 0.05$  were considered statistically significant. The pH dependence of GHB uptake in the presence and absence of sodium was analyzed by a two-way ANOVA with a Bonferroni post-test. The uptake kinetic parameters, Michaelis-Menten constant ( $K_m$ ), and maximum velocity ( $V_{max}$ ), as well as the diffusional clearance ( $P$ ), were determined by fitting the data using weighted nonlinear regression analysis (WinNonlin 5.0; Pharsight, Mountain View, CA) and eqs. 1 through 4:

$$v = \frac{V_{max} \cdot C}{K_m + C} \quad (1)$$

$$v = \frac{V_{max} \cdot C}{K_m + C} + P \cdot C \quad (2)$$

$$v = P \cdot C \quad (3)$$

$$v = \frac{V_{max1} \cdot C}{K_{m1} + C} + \frac{V_{max2} \cdot C}{K_{m2} + C} \quad (4)$$

where  $v$  is the uptake rate of GHB,  $C$  is the concentration of GHB, and  $P$  is the nonsaturable diffusion uptake clearance. The goodness of fit was determined by the sum of the squared derivatives, the residual plot, and the Akaike information criterion (AIC). The equation that provided the smallest coefficient of variation percentage and AIC was used for obtaining  $K_m$ ,  $V_{max}$ , and  $P$  parameters for the uptake data.

The percentage of inhibition was calculated using eq. 5. The inhibition of GHB uptake by selected inhibitors ( $IC_{50}$ ) was calculated by fitting eq. 6 using weighted nonlinear regression analysis (WinNonlin 5.0):

$$\% \text{Inhibition}(F) = 100 \times \left( \frac{v_{Na^+} - v_{inh}}{v_{Na^+} - v_{Na^-}} \right) \quad (5)$$

$$F = 100 \times \frac{I_{max} \times C^r}{IC_{50}^r + C^r} \quad (6)$$

where  $v_{Na^+}$  is the uptake rate of GHB in the presence of sodium,  $v_{inh}$  is the uptake rate of GHB in the presence of both sodium and inhibitors, and  $v_{Na^-}$  is the uptake rate of GHB in the absence of sodium.  $F$  is the percentage of sodium-dependent uptake rate of GHB in the presence of inhibitors compared with the control and  $C$  is the concentration of inhibitors,  $I_{max}$  is the maximum percentage of inhibition,  $IC_{50}$  is concentration of inhibitor that provides 50% of maximal inhibition, and  $r$  is the Hill coefficient. The goodness of fit was determined by the sum of the squared derivatives, the residual plot, and the AIC.

## Results

**Gene Expression of SMCT and MCT Isoforms in FRTL-5 Cells.** The gene expression of SMCT1, SMCT2, and MCT1–4 isoforms in FRTL-5 cells was examined by RT-PCR with specific primers designed for each gene. Results showed that mRNAs of SMCT1, MCT1, and MCT2 were expressed in FRTL-5 cells (Fig. 1). mRNAs for SMCT2, MCT3, and MCT4 were not detected.

**Effect of Sodium on Cellular Uptake of D-Lactate, Butyrate, and GHB.** To study the effect of sodium on the cellular uptake of known SMCT1 substrates D-lactate and butyrate, FRTL-5 cells were incubated with 100 nM [ $^3$ H]D-lactate or 1  $\mu$ M [ $^{14}$ C]butyrate for 1, 5, and 30 min in the presence or absence of sodium at pH 7.4. Compared with the  $Na^+$ -free condition, the uptake of D-lactate and butyrate in the presence of sodium is higher at 5 and 30 min for both compounds (Fig. 2A for D-lactate; Fig. 2B for butyrate). Likewise, uptake of 20 nM [ $^3$ H]GHB was significantly higher in the presence of sodium than for the sodium-free condition at 5 and 30 min (Fig. 2C).

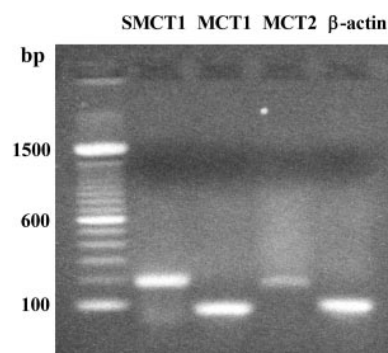


FIG. 1. mRNA expression of SMCT1, MCT1, and MCT2 in FRTL-5 cells. Studies were performed as described under *Materials and Methods*. bp, base pairs.

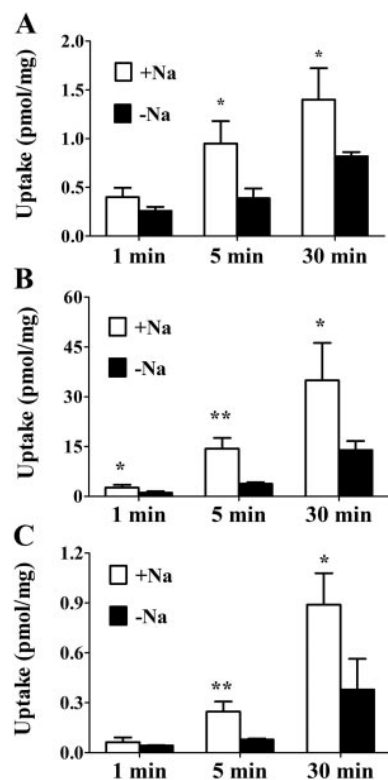


FIG. 2. Effect of sodium on the cellular uptake of D-lactate, butyrate, and GHB. FRTL-5 cells were incubated with 100 nM [ $^3$ H]D-lactate (A), 1  $\mu$ M [ $^{14}$ C]butyrate (B), or 20 nM [ $^3$ H]GHB (C) for 1, 5, and 30 min in the presence ( $\square$ ) or absence ( $\blacksquare$ ) of sodium at pH 7.4. Uptake values were normalized by protein concentration. Results are presented as the mean  $\pm$  S.D. The experiment was repeated three times with triplicate determinations in each experiment. Statistical analysis by a Student's  $t$  test: \*,  $p < 0.05$ ; \*\*,  $p < 0.01$ , compared with uptake in the absence of sodium.

**Time Course of GHB Cellular Uptake.** FRTL-5 cells were incubated with 20 nM [ $^3$ H]GHB for up to 60 min at room temperature. The uptake was linear up to 10 min (Fig. 3). Therefore, an incubation time of 5 min was chosen to determine uptake of GHB in all uptake studies.

**Effect of pH on GHB Uptake.** The effect of extracellular pH on GHB uptake by FRTL-5 cells was examined by incubating cells with buffers of different pH (5.5, 6.0, 6.5, 7.0, and 7.4) containing 20 nM [ $^3$ H]GHB for 5 min in the presence and absence of sodium (Fig. 4). The two-way ANOVA indicated that both sodium and pH affect uptake of GHB in the FRTL-5 cells with no significant interaction between the effects of sodium and pH. In the presence of sodium, the uptake rates at different pH values are not significantly different. However, in the absence of sodium, FRTL-5 cells exhibited a significant

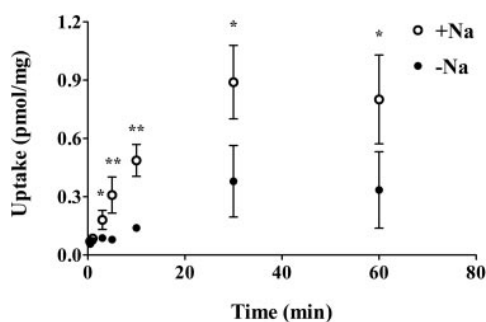


FIG. 3. Time course of GHB uptake in FRTL-5 cells. FRTL-5 cells were incubated with 20 nM [ $^3$ H]GHB for up to 60 min in the presence (○) or absence (●) of sodium at pH 7.4. Uptake values were normalized by protein concentration. Results are presented as the mean  $\pm$  S.D. The experiment was repeated three times with triplicate determinations in each experiment. Statistical analysis by a Student's *t* test: \*,  $p < 0.05$ ; \*\*,  $p < 0.01$ , compared with uptake in the absence of sodium.

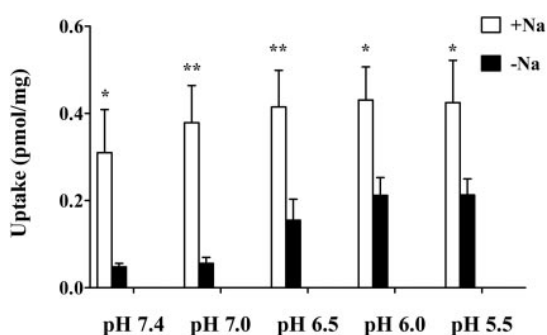


FIG. 4. Effect of pH on GHB uptake in FRTL-5 cells. Studies were performed using buffers at various pH values (pH 5.5, 6.0, 6.5, 7.0, and 7.4) with uptake determined at 5 min. In the absence of sodium, the cellular uptake at pH 6.5, 6.0, and 5.5 are significantly higher than that at pH 7.4 ( $p < 0.05$ ). Each bar represents the mean  $\pm$  S.D. of three experiments, each performed in triplicate. Statistical analysis by a two-way ANOVA: \*,  $p < 0.05$ ; \*\*,  $p < 0.01$ , compared with uptake in the absence of sodium.

GHB uptake when pH was decreased. The uptake rates at pH values less than 6.5 were significantly greater than that at pH 7.4. For all the pH values examined in this study, uptake in the presence of sodium is significantly higher than that for the sodium-free condition.

The concentration dependence for GHB uptake was determined over a range of GHB concentrations (1  $\mu$ M–10 mM) with uptake determined at 5 min and extracellular pH of 7.4. The uptake of GHB exhibited typical Michaelis-Menten kinetics in the presence of sodium and exhibited linear uptake in the absence of sodium (Fig. 5A). The uptake data obtained in the presence and absence of sodium were fitted to eqs. 1 through 4. We also determined the net uptake values for GHB in the presence of sodium by subtracting the values in the absence of sodium and fitted the net uptake data with eqs. 1 through 4. The total uptake values were best fitted with eq. 2, and the net uptake data were best fitted with eq. 1, suggesting only one major transporter mediates GHB uptake in FRTL-5 cells in the presence of sodium (137 mM) at pH 7.4. The kinetic parameters ( $K_m$  0.68  $\pm$  0.30 mM,  $V_{max}$  3.50  $\pm$  1.58 nmol  $\cdot$  mg $^{-1}$   $\cdot$  min $^{-1}$ , and diffusional clearance of 0.25  $\pm$  0.08  $\mu$ l  $\cdot$  mg $^{-1}$   $\cdot$  min $^{-1}$ ) were obtained by simultaneously fitting the uptake data obtained in the presence and absence of sodium to eqs. 2 and 3. The data were also plotted using an Eadie-Hofstee plot (Fig. 5B). The linearity observed with this plot also suggested a single transporter-mediated process.

**Effect of Inhibitors on Sodium-Dependent GHB Uptake.** The inhibitory effects of selected compounds on GHB uptake by FRTL-5 cells were examined at pH 7.4 in the presence of sodium. The all

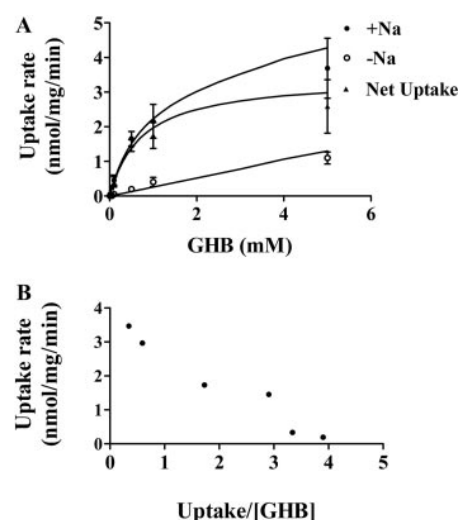


FIG. 5. Concentration-dependent GHB uptake in FRTL-5 cells. Studies were performed at pH 7.4 with uptake determined at 5 min. A, the uptake data, obtained at various GHB concentrations, were best fitted to the eq. 2, as described under *Materials and Methods*. Data are expressed as the mean  $\pm$  S.D. of three experiments, with each experiment performed in triplicate. The symbols represent observed data and the lines represent the best fit of the data. B, Eadie-Hofstee plot of the data.

were incubated with 10  $\mu$ M [ $^3$ H]GHB in the presence or absence of 1 mM D-lactate, L-lactate, butyrate, pyruvate, BHB, ketoprofen, ibuprofen, naproxen, CHC, probenecid, or DIDS or with 0.05 mM luteolin or 0.25 mM phloretin. Uptake in the presence of sodium-containing buffer (without inhibitors) was used as the control. All uptake results are presented as percentage of control (Fig. 6A). GHB uptake was significantly inhibited by D-lactate, L-lactate, butyrate, pyruvate, BHB, ketoprofen, ibuprofen, naproxen, and probenecid. MCT inhibitors CHC, luteolin, and phloretin and the anion exchanger inhibitor DIDS had no inhibitory effect on GHB uptake in FRTL-5 cells. Effects of ibuprofen, ketoprofen, and probenecid on the uptake of D-lactate and butyrate in FRTL-5 cells were also examined. Uptake of D-lactate was significantly inhibited by ketoprofen and ibuprofen (Fig. 6B). All three inhibitors significantly inhibited butyrate uptake (Fig. 6C).

Concentration-dependent inhibition of GHB (10  $\mu$ M) uptake was demonstrated for ibuprofen (Fig. 7A), ketoprofen (Fig. 7B), probenecid (Fig. 7C), and L-lactate (Fig. 7D). FRTL-5 cells were incubated with 10  $\mu$ M [ $^3$ H]GHB in the presence of inhibitors for 5 min. The percent inhibition and  $IC_{50}$  values were calculated using eqs. 5 and 6.  $IC_{50}$  values were 31.6  $\pm$  19.7, 64.4  $\pm$  23.4, 380  $\pm$  43.4, and 101  $\pm$  37.3  $\mu$ M (mean  $\pm$  S.D.,  $n = 3$ ) for ketoprofen, ibuprofen, probenecid, and L-lactate, respectively.

**Effect of Inhibitors on GHB Uptake in Rat MCT1 Gene-Transfected Cells.** Expression of MCT1 protein and transport of GHB in *MCT1* gene-transfected MDA-MB231 cells have been demonstrated previously (Wang et al., 2006). In this study, effects of SMCT1 inhibitors on MCT1-mediated GHB (5  $\mu$ M) uptake were examined for ibuprofen, ketoprofen, probenecid, and L-lactate. The uptake was determined by incubation of cells with [ $^3$ H]GHB (5  $\mu$ M) for 1 min at an external buffer pH of 6.0. Consistent with a previous report (Wang et al., 2006), GHB uptake was significantly increased in *MCT1*-transfected cells compared with mock-transfected cells, and the uptake was not affected by sodium. MCT1 inhibitors CHC (1 mM) and luteolin (50  $\mu$ M) significantly reduced GHB uptake in *MCT1*-transfected cells. The effect of SMCT1 inhibitors on butyrate uptake was

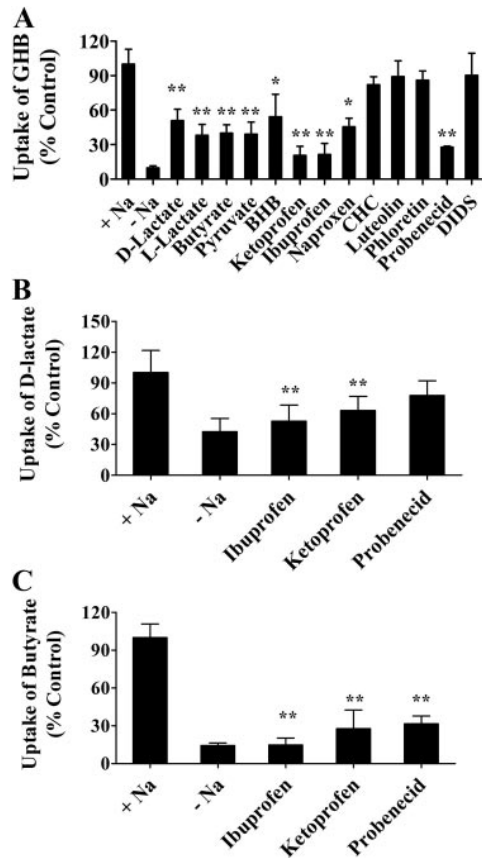


FIG. 6. Effect of inhibitors on the uptake of GHB (A), D-lactate (B), and butyrate (C) by FRTL-5 cells. The uptake studies were conducted at pH 7.4 in the presence of sodium with an uptake time of 5 min. The concentration of GHB was 10  $\mu$ M, and the concentration of all inhibitors was 1 mM, except for phloretin (0.25 mM) and luteolin (0.05 mM). The uptake values were normalized to that in the presence of sodium and without inhibitors. The data are presented as the mean  $\pm$  S.D. The experiments were repeated three times with triplicate determinations for each experiment. One-way ANOVA followed by Dunnett's test was used for statistical analysis: \*,  $p < 0.05$ ; \*\*,  $p < 0.01$ .

benecid, and L-lactate also significantly decreased uptake of GHB in *MCT1* gene-transfected cells (Fig. 8).

**Effect of Inhibitors on GHB Uptake at Different pH Values in FRTL-5 Cells.** To investigate the transport mechanism of GHB by FRTL-5 cells, effect of inhibitors were examined at pH 6.0 and 7.4 for CHC, luteolin, ibuprofen, and L-lactate (Fig. 9). At pH 7.4, 90% of uptake was blocked in the absence of sodium compared with that under sodium-containing conditions, and the uptake was not further reduced by inhibitors. In the presence of sodium, uptake of GHB was significantly reduced by ibuprofen and L-lactate but not affected by CHC and luteolin. At pH 6.0, GHB uptake with the sodium-free buffer was reduced by 39%, on average, compared with that under sodium-containing conditions. Likewise, the uptake of GHB was significantly reduced by ibuprofen and L-lactate in the presence of sodium. In the absence of sodium, uptake was decreased to similar levels by all four inhibitors. However, only inhibition by CHC, luteolin, and ibuprofen was statistically significant.

### Discussion

MCTs and SMCTs are the two plasma membrane transporter families known to mediate the cellular uptake of monocarboxylic acids. MCTs belong to the solute carrier gene family SLC16A, and 14

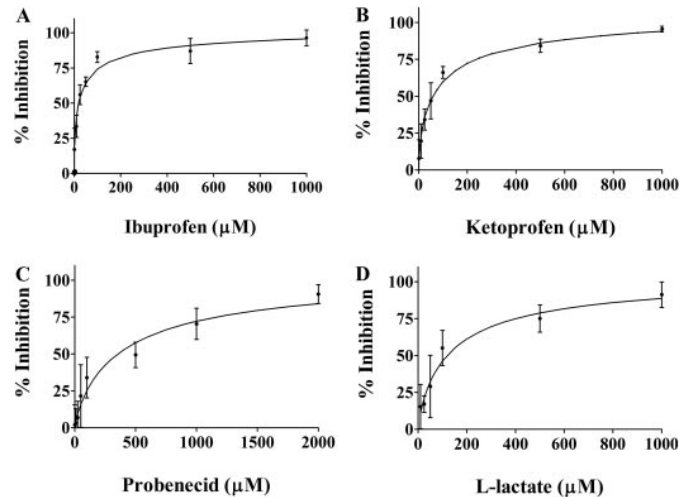


FIG. 7. Concentration-dependent inhibition of GHB uptake by ibuprofen (A), ketoprofen (B), probenecid (C), and L-lactate (D). The symbols represent observed data, and the lines represent the fitted data. The uptake results were normalized by the control values (uptake in the presence of sodium and absence of inhibitors). Uptake in the absence of sodium has been subtracted from the values. The uptake studies were conducted at pH 7.4 and room temperature, and the uptake time was 5 min. The concentration of GHB used was 10  $\mu$ M. The experiments were repeated three times with triplicate determinations for each experiment. The data are presented as the mean  $\pm$  S.D. for one representative experiment.

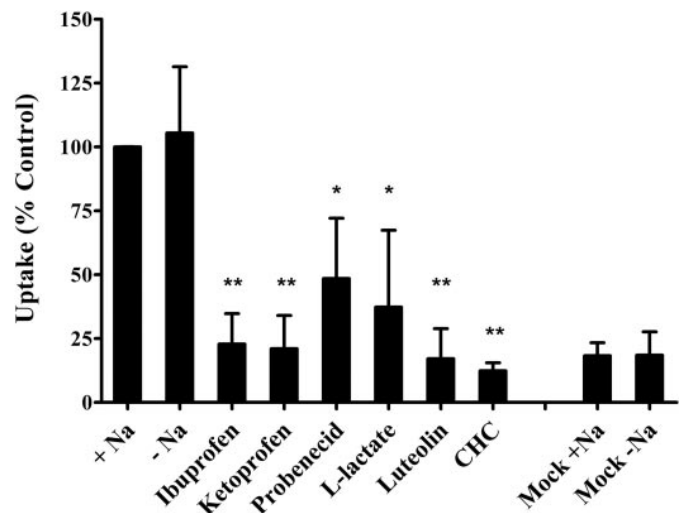


FIG. 8. Effect of SMCT1 inhibitors on GHB uptake in rat *MCT1* gene-transfected MDA-MB231 cells. The uptake results were normalized by the control values (uptake by *MCT1* gene-transfected cells in the presence of sodium and absence of inhibitors). The uptake studies were conducted at pH 6.0, and the uptake time was 1 min. The concentration of GHB used was 5  $\mu$ M, and the concentration of the inhibitors was 1 mM, except for luteolin (0.05 mM). The experiments were repeated three times, with triplicate determinations for each experiment. The data are presented as the mean  $\pm$  S.D. for one representative experiment. Statistical analysis by Student's *t* test: \*,  $p < 0.05$ ; \*\*,  $p < 0.01$ ; compared with the control.

and Price, 1999). MCTs mediate transport of monocarboxylates in a proton-dependent manner. SMCTs belong to the SLC5A family, containing two members (SMCT1 and SMCT2) with transport driven by a sodium gradient. Despite the differences in sequence identity and driving force, MCTs and SMCTs have similar substrate specificity (Srinivas et al., 2005). MCT-mediated GHB transport has been extensively characterized using kidney cell lines and kidney membrane vesicles (Wang et al., 2006). In this study we found that GHB, as well as the monocarboxylates D-lactate and butyrate, undergo sodium-

# Explore Litigation Insights

Docket Alarm provides insights to develop a more informed litigation strategy and the peace of mind of knowing you're on top of things.

## Real-Time Litigation Alerts



Keep your litigation team up-to-date with **real-time alerts** and advanced team management tools built for the enterprise, all while greatly reducing PACER spend.

Our comprehensive service means we can handle Federal, State, and Administrative courts across the country.

## Advanced Docket Research



With over 230 million records, Docket Alarm's cloud-native docket research platform finds what other services can't. Coverage includes Federal, State, plus PTAB, TTAB, ITC and NLRB decisions, all in one place.

Identify arguments that have been successful in the past with full text, pinpoint searching. Link to case law cited within any court document via Fastcase.

## Analytics At Your Fingertips



Learn what happened the last time a particular judge, opposing counsel or company faced cases similar to yours.

Advanced out-of-the-box PTAB and TTAB analytics are always at your fingertips.

## API

Docket Alarm offers a powerful API (application programming interface) to developers that want to integrate case filings into their apps.

## LAW FIRMS

Build custom dashboards for your attorneys and clients with live data direct from the court.

Automate many repetitive legal tasks like conflict checks, document management, and marketing.

## FINANCIAL INSTITUTIONS

Litigation and bankruptcy checks for companies and debtors.

## E-DISCOVERY AND LEGAL VENDORS

Sync your system to PACER to automate legal marketing.