

IEEE 100

THE  
AUTHORITATIVE  
DICTIONARY  
OF IEEE STANDARDS TERMS

SEVENTH EDITION



Published by  
Standards Information Network  
IEEE Press

emarks and disclaimers

believes the information in this publication is accurate as of its publication date; such information is subject  
e without notice. IEEE is not responsible for any inadvertent errors.

tradenames and trademarks in this document are those of their respective owners.

The Institute of Electrical and Electronics Engineering, Inc.  
3 Park Avenue, New York, NY, 10016-5997, USA

Copyright © 2000 by the Institute of Electrical and Electronics Engineers, Inc. All rights reserved. Published  
December 2000. Printed in the United States of America.

No part of this publication may be reproduced in any form, in an electronic retrieval system or otherwise, without  
the prior written permission of the publisher.

To order IEEE Press publications, call 1-800-678-IEEE.

Print: ISBN 0-7381-2601-2 SP1122

See other standards and standards-related product listings at: <http://standards.ieee.org/>

The publisher believes that the information and guidance given in this work serve as an enhancement to users,  
all parties must rely upon their own skill and judgement when making use of it. The publisher does not assume  
any liability to anyone for any loss or damage caused by any error or omission in the work, whether such error  
or omission is the result of negligence or any other cause. Any and all such liability is disclaimed.

This work is published with the understanding that the IEEE is supplying information through this publication,  
not attempting to render engineering or other professional services. If such services are required, the assistance  
of an appropriate professional should be sought. The IEEE is not responsible for the statements and opinions  
advanced in this publication.

Library of Congress Cataloging-in-Publication Data

IEEE 100 : the authoritative dictionary of IEEE standards terms.—7th ed.  
p. cm.

ISBN 0-7381-2601-2 (paperback : alk. paper)

1. Electric engineering—Dictionaries. 2. Electronics—Dictionaries. 3. Computer  
engineering—Dictionaries. 4. Electric engineering—Acronyms. 5. Electronics—Acronyms.  
6. Computer engineering—Acronyms. I. Institute of Electrical and Electronics Engineers.

TK9 .I28 2000  
621.3'03—dc21

00-050601

The Authoritative I

# Contents

## Introduction

## How to Use T

## Categories

## Trademarks

## The Authorit

## Abstracts and

## Non-IEEE S

**computer output microfilm printer** A page printer that produces a microimage of each page on a photographic film. (C) 610.10-1994w

**computer performance evaluation (software)** An engineering discipline that measures the performance of computer systems and investigates methods by which that performance can be improved. *See also:* throughput; utilization. (C) 610.12-1990

**computer program (1) (general)** A plan or routine for solving a problem on a computer, as contrasted with such terms as fiscal program, military program, and development program. (MIL/C) [2], [20], [85]

(2) **(analog computer)** That combination of computer diagram, potentiometer list, amplifier list, trunk list, switch list, scaled equations, and any other documentation that defines the analog configuration for the particular problem to be solved. This term sometimes is used to include the problem patch board as well, and, in some loose usage, the computer program may be (incorrectly) used to refer solely to the program patch panel. (C) 165-1977w

(3) **(programmable digital computer systems in safety systems of nuclear power generating stations)** A schedule or plan that specifies actions that may or may not be taken, expressed in a form suitable for execution by a programmable digital computer. 7432-1982w

(4) **(computer terminology)** A combination of computer instructions and data definitions that enable computer hardware to perform computational or control functions. *See also:* software. (C/SE) J-STD-016-1995, 610.12-1990, 610.5-1990w, 610.10-1994w

**computer program abstract (software)** A brief description of a computer program that provides sufficient information for potential users to determine the appropriateness of the program to their needs and resources. (C) 610.12-1990

**computer program annotation** *See:* comment.

**computer program certification** *See:* certification.

**computer program component\* (CPC)** *See:* computer software component.

\* Deprecated.

**computer program configuration identification** *See:* configuration identification.

**computer program configuration item (CPCI)** *See:* computer software configuration item.

**computer program development plan** *See:* software development plan.

**computer program validation** *See:* validation.

**computer program verification** *See:* verification.

**computer resource allocation** The assignment of computer resources to current and waiting jobs; for example, the assignment of main memory, input/output devices, and auxiliary storage to jobs executing concurrently in a computer system. *See also:* dynamic resource allocation; storage allocation. (C) 610.12-1990

**computer resources** The computer equipment, programs, documentation, services, facilities, supplies, and personnel available for a given purpose. *See also:* computer resource allocation. (C) 610.12-1990, 610.10-1994w

**computer security** Protection of information, system resources, and system services through controls provided by hardware and software mechanisms, including access controls, user authentication mechanisms, and audit facilities. (C/BA) 896.3-1993w

**computer security object** An information object used to maintain a condition of security in computerized environments. Examples include: representations of computer or communications systems resources, security label semantics, modes of operation for cryptographic algorithms, and one-way hashing functions. (C/LM) 802.10g-1995

**computer simulation** A simulation of the operation of a computer. *See also:* computer-based simulation. (C) 610.3-1989w

**computer software** *See:* software.

**computer software component (CSC)** A functionally or logically distinct part of a computer software configuration item, typically an aggregate of two or more software units. (C) 610.12-1990

**computer software configuration item (CSCI)** An aggregation of software that is designated for configuration management and treated as a single entity in the configuration management process. *Contrast:* hardware configuration item. *See also:* configuration item. (C) 610.12-1990

**computer system (1) (software)** A system containing one or more computers and associated software. (C) 610.12-1990

(2) A system containing one or more computers, peripheral devices and associated software. *Synonym:* computing system. (C) 610.7-1995, 610.10-1994w

**Computer System Simulation II (CSS/II)** A simulation language that is based on the concepts used in GPSS, but specialized for use in modeling computer systems. (C) 610.13-1993w

**computer time** *See:* time.

**computer typesetting (CTS)** *See:* computer-aided typesetting.

**computer variable (1)** A dependent variable as represented on the computer. *See also:* time. (C) 165-1977w

(2) **(machine variable)** *See also:* scale factor. (C) 165-1977w

**computer word (1)** A sequence of bits or characters treated as a unit and capable of being stored in one computer location. (C) [20], [85]

(2) A unit of storage, typically a set of bits, that is suitable for processing by a given computer; for example, two bytes. *Synonyms:* machine word; fullword. *See also:* double word; word. (C) 610.10-1994w

(3) **(computer terminology)** *See also:* word. (C) 610.5-1990w, 610.12-1990, 1084-1986w

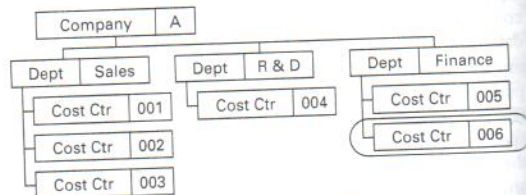
**computing center** A facility designed to provide computer services to a variety of users through the operation of computers and auxiliary hardware and through services provided by the facility's staff. (C) 610.12-1990

**computing elements (analog computer)** A computer component that performs a mathematical operation required for problem solution. It is shown explicitly in computer diagrams, or computer programs. (C) 165-1977w

**computing system** *See:* computer system.

**concatenate** To append one item to the end of another so as to form a single unit in a contiguous pattern. For example, if we concatenate 'AP' with 'PLE,' the result is 'APPLE.' *Synonym:* catenate. (C) 610.5-1990w

**concatenated key (A) (data management)** A key derived from the concatenation of two or more keys. *Synonyms:* multifield key; fully concatenated key. **(B) (data management)** A concatenation of the keys for the first *N* segments found in a hierarchical path. For example, in the structure below, the concatenated key for segment .xis "AFINANCE006."



concatenated key

(C) 610.5-1990

**concatenated transaction (1)** A transaction where the request and response subactions are directly concatenated without a gap between the acknowledge of the request and the response packet. (C/MM) 1394-1985

(2) A split transaction comprised of concatenated subactions. (C/MM) 1394a-2000