



US006230132B1

(12) **United States Patent**  
Class et al.

(10) **Patent No.:** US 6,230,132 B1  
(45) **Date of Patent:** May 8, 2001

(54) **PROCESS AND APPARATUS FOR REAL-TIME VERBAL INPUT OF A TARGET ADDRESS OF A TARGET ADDRESS SYSTEM**

(75) Inventors: **Fritz Class, Roemerstein; Thomas Kuhn, Ulm; Carsten-Uwe Moeller, Koengen; Frank Reh, Stuttgart; Gerhard Nuessle, Blaustein**, all of (DE)

(73) Assignee: **DaimlerChrysler AG, Stuttgart (DE)**

(\* ) Notice: Subject to any disclaimer, the term of this patent is extended or adjusted under 35 U.S.C. 154(b) by 0 days.

(21) Appl. No.: **09/038,147**

(22) Filed: **Mar. 10, 1998**

(30) **Foreign Application Priority Data**

Mar. 10, 1997 (DE) ..... 197 09 518

(51) **Int. Cl.<sup>7</sup>** ..... **G10L 11/00**

(52) **U.S. Cl.** ..... **704/270; 704/276**

(58) **Field of Search** ..... **704/270, 276; 701/210**

(56) **References Cited**

**U.S. PATENT DOCUMENTS**

4,866,778	9/1989	Baker	381/43
5,054,082	* 10/1991	Smith et al.	704/275
5,165,095	* 11/1992	Borcherding	.
5,172,321	* 12/1992	Ghaem et al.	364/444
5,677,990	* 10/1997	Junqua	704/255
5,832,429	* 11/1998	Gammel et al.	704/255
5,893,901	* 4/1999	Maki	704/260

**FOREIGN PATENT DOCUMENTS**

36 08 497 A1	* 9/1987	(DE)	.
196 00 700			
A1	* 8/1996	(DE)	.
195 33 541	3/1997	(DE)	.
0 346 483	12/1989	(EP)	.
0 477 688 A2	* 9/1991	(EP)	.

0 736 853 A1	* 4/1996	(EP)	.
61-147298	* 7/1986	(JP)	.
6-66591	* 3/1994	(JP)	.
6-85893	* 3/1994	(JP)	.
6-42154	* 6/1994	(JP)	.
6-54440	* 7/1994	(JP)	.
7-219961	* 8/1994	(JP)	.
6-261126	* 9/1994	(JP)	.
6-318977	* 11/1994	(JP)	.
7-64480	* 3/1995	(JP)	.
7-219590	* 8/1995	(JP)	.
7-261784	* 10/1995	(JP)	.
7-319383	* 12/1995	(JP)	.
8-166797	* 6/1996	(JP)	.
8-202386	* 8/1996	(JP)	.
8-328584	* 12/1996	(JP)	.
WO 96/13030	* 5/1996	(WO)	.

\* cited by examiner

*Primary Examiner*—Krista Zele

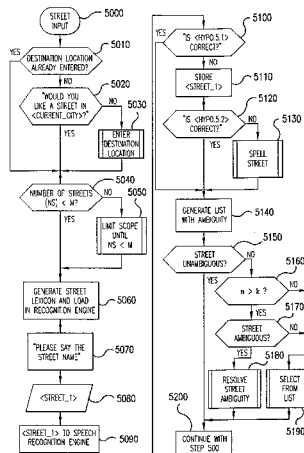
*Assistant Examiner*—Michael N. Opsasnick

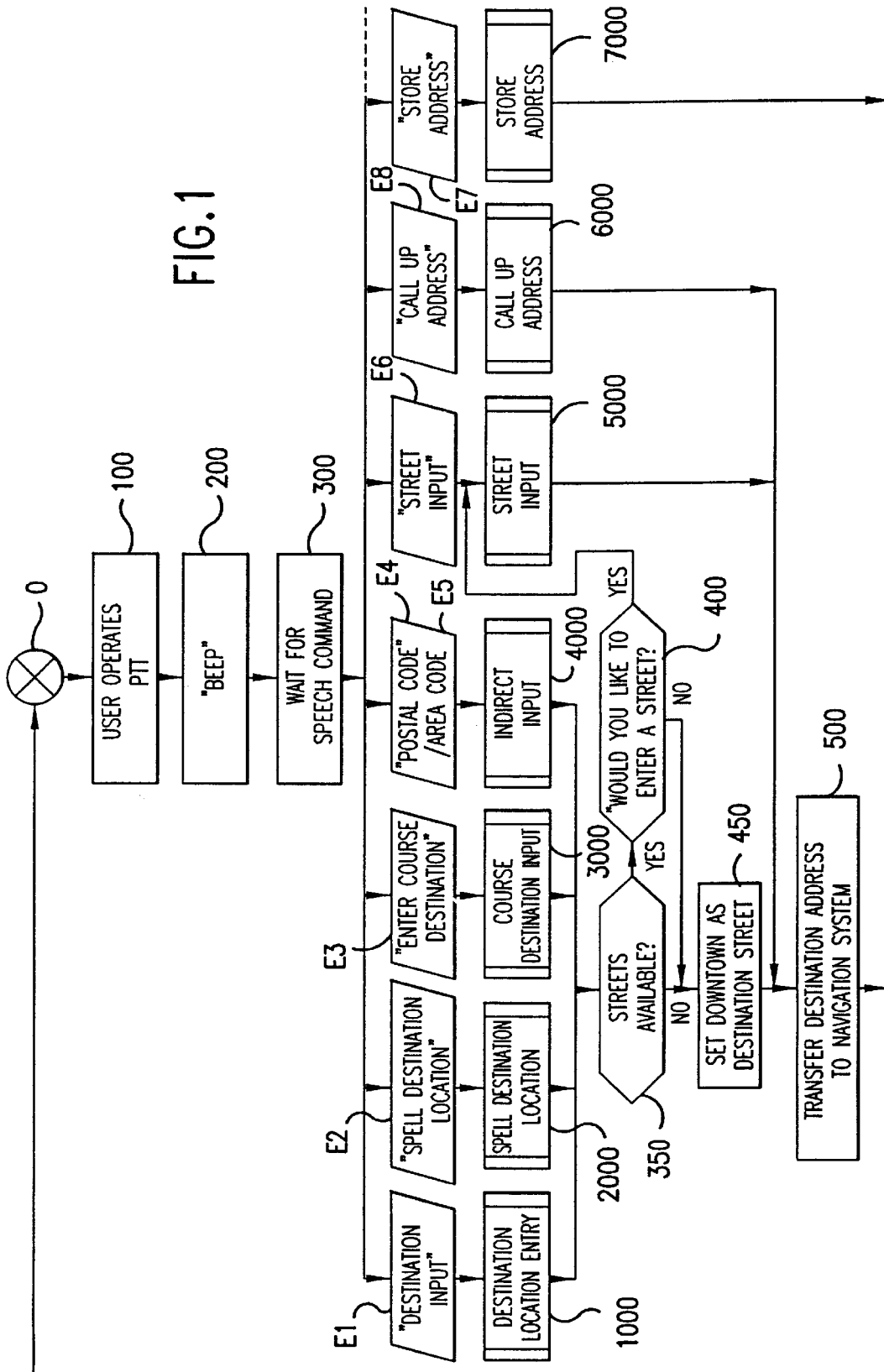
(74) *Attorney, Agent, or Firm*—Evenson, McKeown, Edwards & Lenahan, P.L.L.C.

(57) **ABSTRACT**

In a method for real time speech input of a destination address into a navigation system, the speech statements that are entered by a user are recognized by a speech recognition device and classified in accordance with their recognition probability. The speech statement with the greatest recognition probability is identified as the input speech statement, with at least one speech statement being an admissible speech command that activates the operating functions of the navigation system associated with this speech command. (All the admissible speech statements being stored in at least one database.) According to the invention, at least one operating function of the navigation system comprises an input dialogue. Following activation of that operating function, depending on the input dialogue, at least one lexicon is generated in real time from the admissible speech statements stored in at least one database, and the generated lexicon is loaded as vocabulary into the speech recognition device.

**17 Claims, 10 Drawing Sheets**





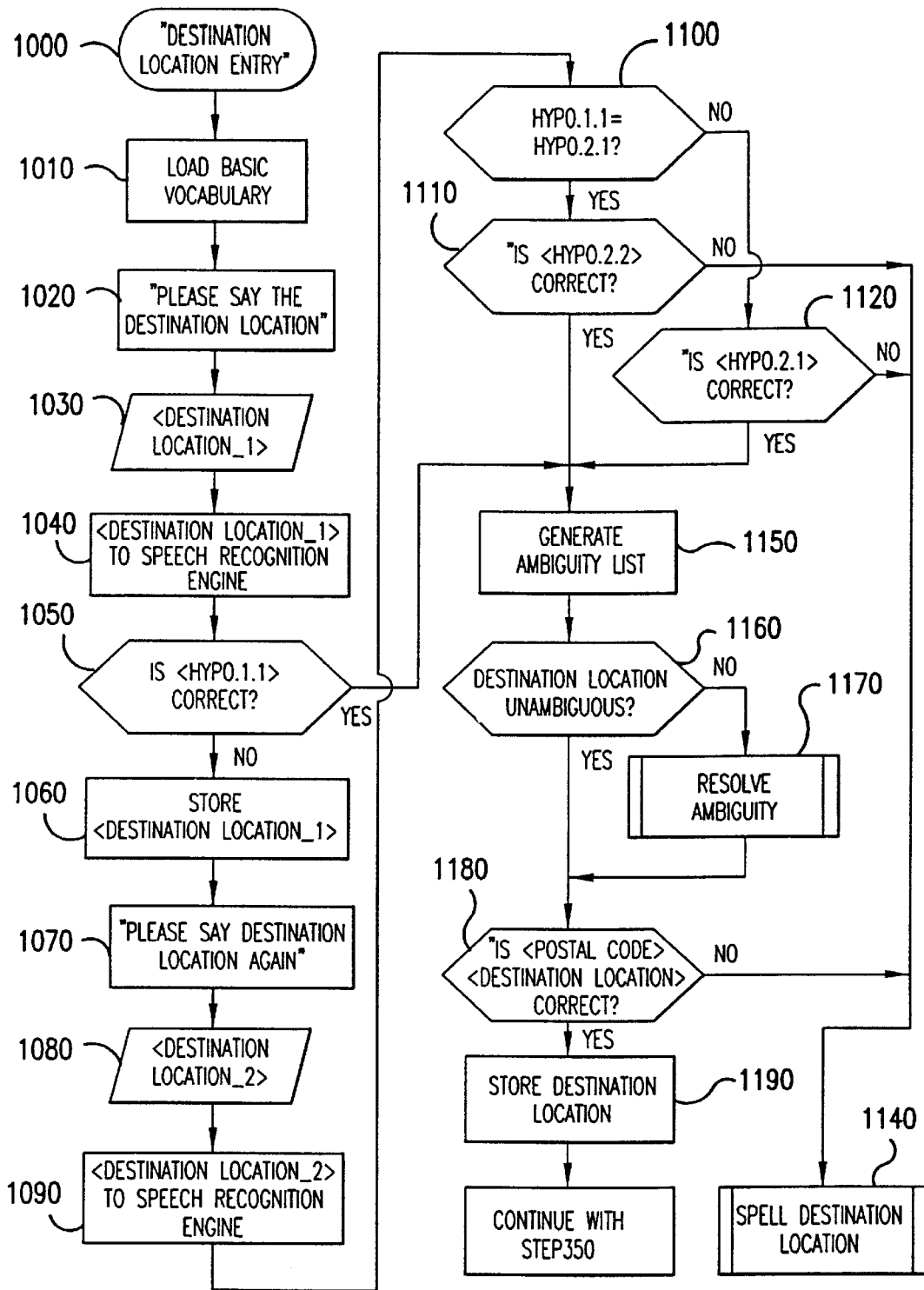


FIG.2

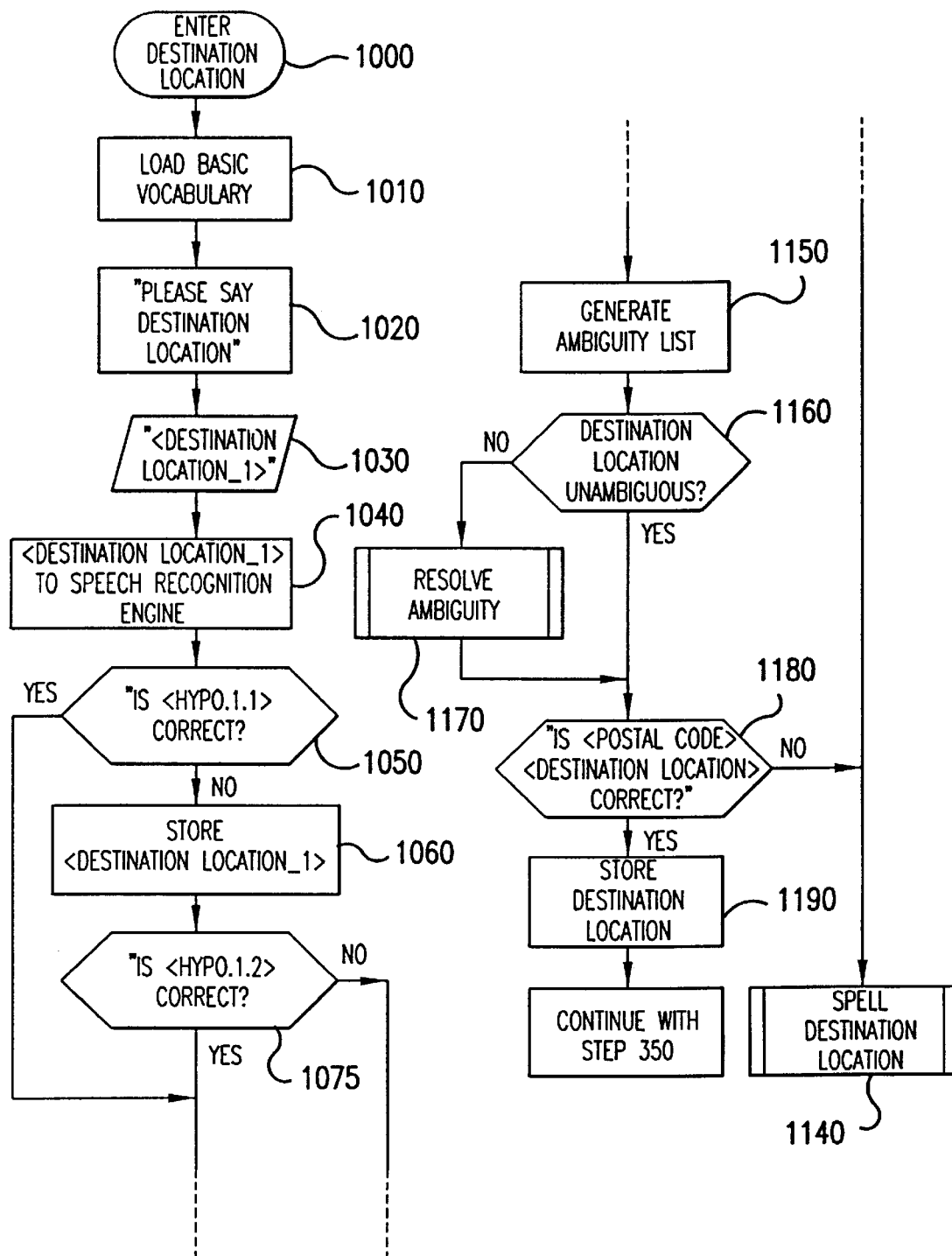


FIG.3

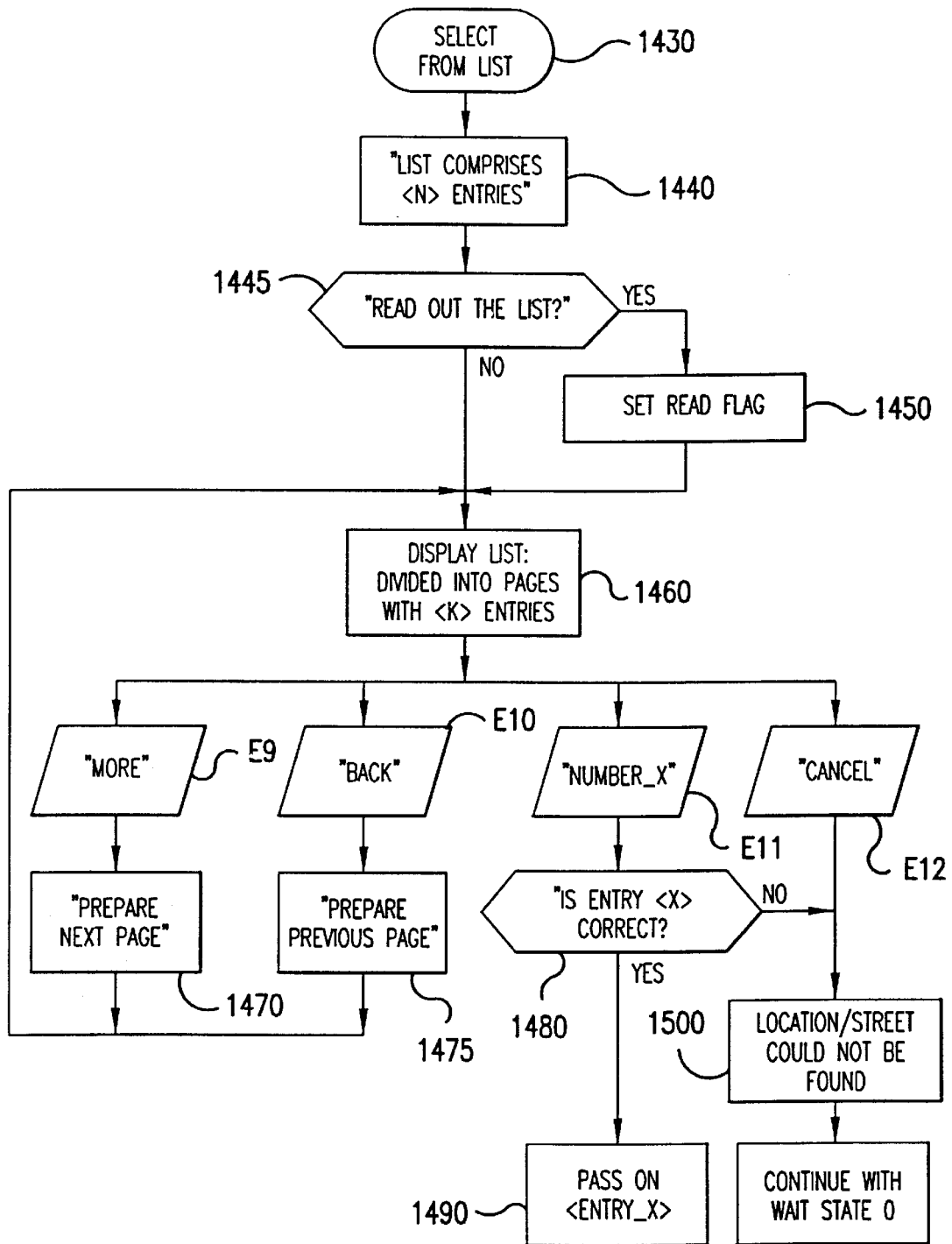


FIG. 4

# Explore Litigation Insights

Docket Alarm provides insights to develop a more informed litigation strategy and the peace of mind of knowing you're on top of things.

## Real-Time Litigation Alerts



Keep your litigation team up-to-date with **real-time alerts** and advanced team management tools built for the enterprise, all while greatly reducing PACER spend.

Our comprehensive service means we can handle Federal, State, and Administrative courts across the country.

## Advanced Docket Research



With over 230 million records, Docket Alarm's cloud-native docket research platform finds what other services can't. Coverage includes Federal, State, plus PTAB, TTAB, ITC and NLRB decisions, all in one place.

Identify arguments that have been successful in the past with full text, pinpoint searching. Link to case law cited within any court document via Fastcase.

## Analytics At Your Fingertips



Learn what happened the last time a particular judge, opposing counsel or company faced cases similar to yours.

Advanced out-of-the-box PTAB and TTAB analytics are always at your fingertips.

## API

Docket Alarm offers a powerful API (application programming interface) to developers that want to integrate case filings into their apps.

## LAW FIRMS

Build custom dashboards for your attorneys and clients with live data direct from the court.

Automate many repetitive legal tasks like conflict checks, document management, and marketing.

## FINANCIAL INSTITUTIONS

Litigation and bankruptcy checks for companies and debtors.

## E-DISCOVERY AND LEGAL VENDORS

Sync your system to PACER to automate legal marketing.