



US005345550A

United States Patent [19]

[11] Patent Number: **5,345,550**

Bloomfield

[45] Date of Patent: **Sep. 6, 1994**

[54] **USER-MODIFIABLE POPUP MENUS FOR OBJECT ORIENTED BEHAVIOR**

[75] Inventor: **Marc A. Bloomfield**, Lighthouse Point, Fla.

[73] Assignee: **International Business Machines Corporation**, Armonk, N.Y.

[21] Appl. No.: **996,983**

[22] Filed: **Dec. 23, 1992**

[51] Int. Cl.⁵ **G06F 3/03**

[52] U.S. Cl. **395/156; 395/157; 395/161**

[58] Field of Search **395/159, 160, 161, 157, 395/156, 155, 158**

[56] **References Cited**

U.S. PATENT DOCUMENTS

4,974,160	11/1990	Bone et al.	395/161
5,121,477	6/1992	Koopmans et al.	395/156 X
5,220,675	6/1993	Padawer et al.	395/155 X
5,261,042	11/1993	Brandt	395/155 X

OTHER PUBLICATIONS

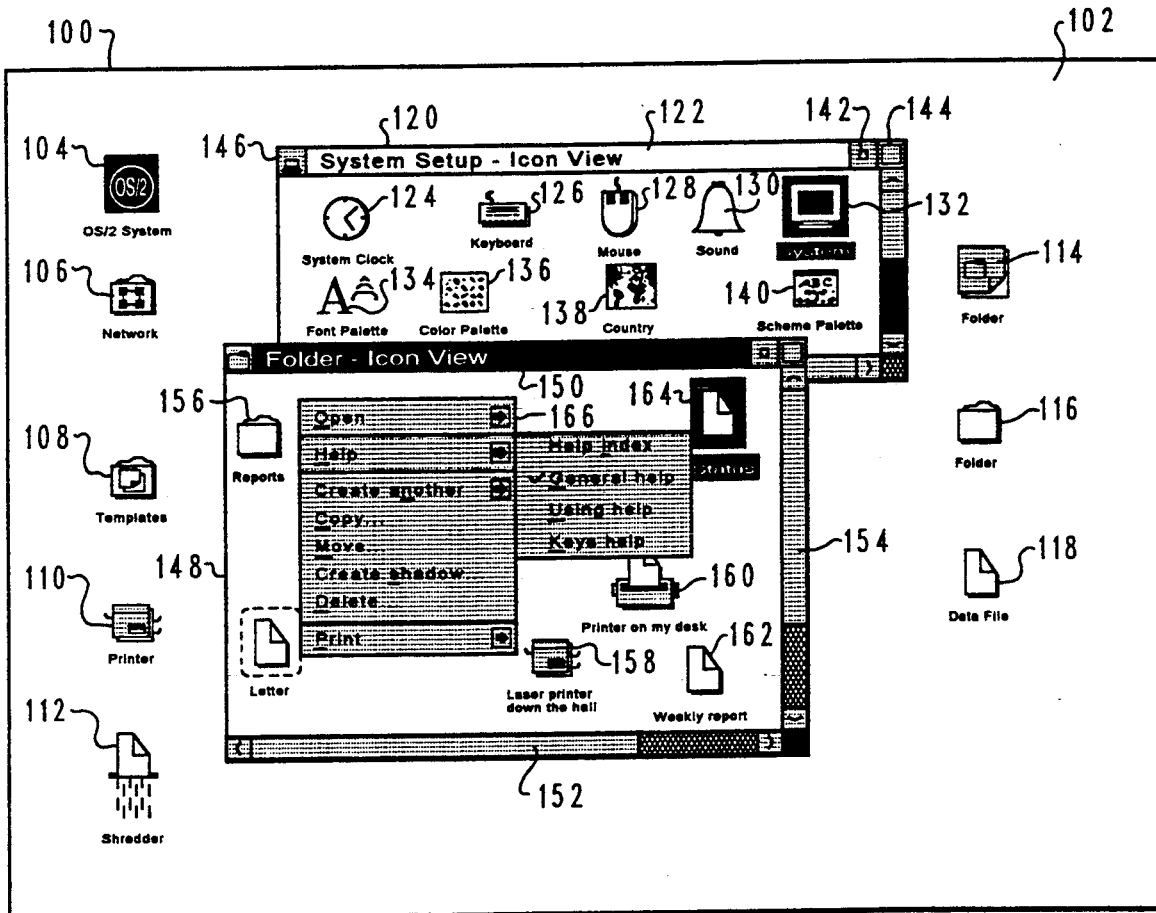
Microsoft Windows User's Guide (Trademark of Microsoft Cor.) pp. 9, 27, 30-31, 88-91.

Primary Examiner—Phu K. Nguyen
Assistant Examiner—Cliff Nguyen Vo
Attorney, Agent, or Firm—Bruce D. Jobse; Paul W. O'Malley; Andrew J. Dillon

[57] **ABSTRACT**

A graphical user interface for a data processing system includes a method of generating a popup menu of actions allowed on an object represented in the graphical user interface. The method includes the steps of interrogating extended attributes for an object and each elder object to the object. Interrogation is for default actions and suppression markers. With each interrogation step the method adds actions linked to the object or to an elder object by another application and removes actions identified by suppression markers by another application from an interim list. After interrogation of the layers for modifications from other applications, the method provides for determining if any user defined actions and suppression markers are present for the object. If yes, the user defined actions are added to the interim list and actions matched by the suppression markers are removed from the interim list. A popup menu is then generated from the interim list.

7 Claims, 13 Drawing Sheets



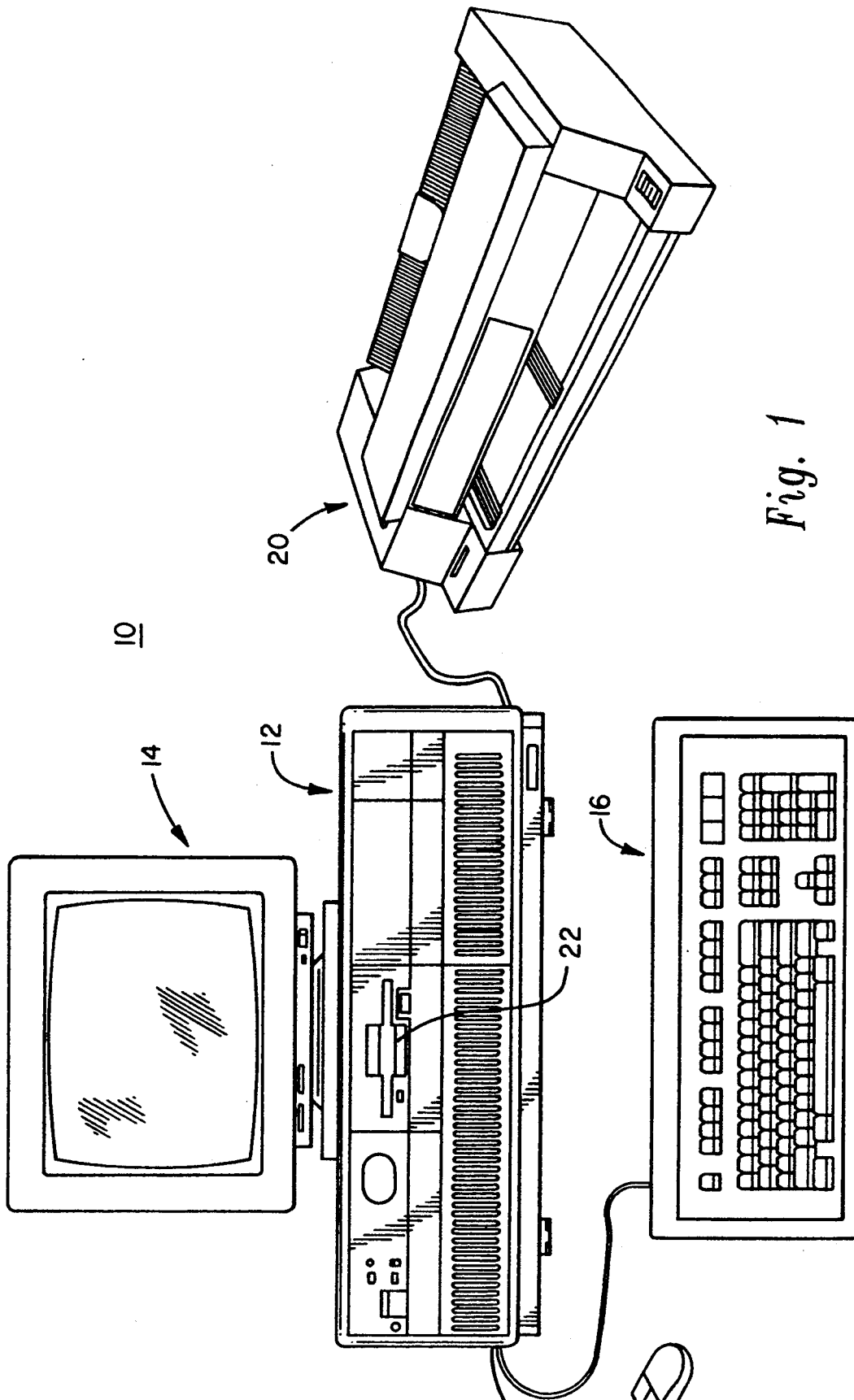
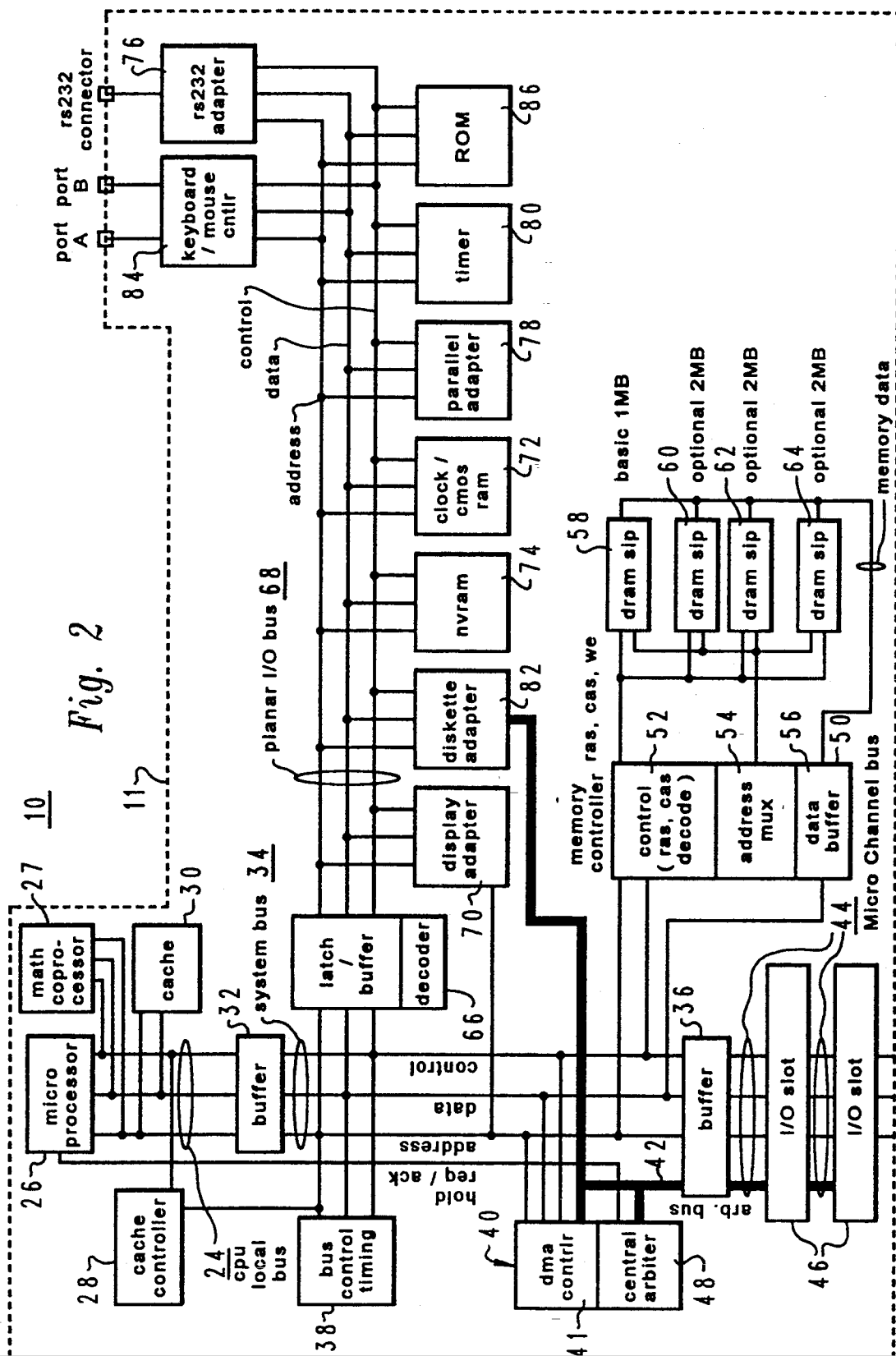


Fig. 1



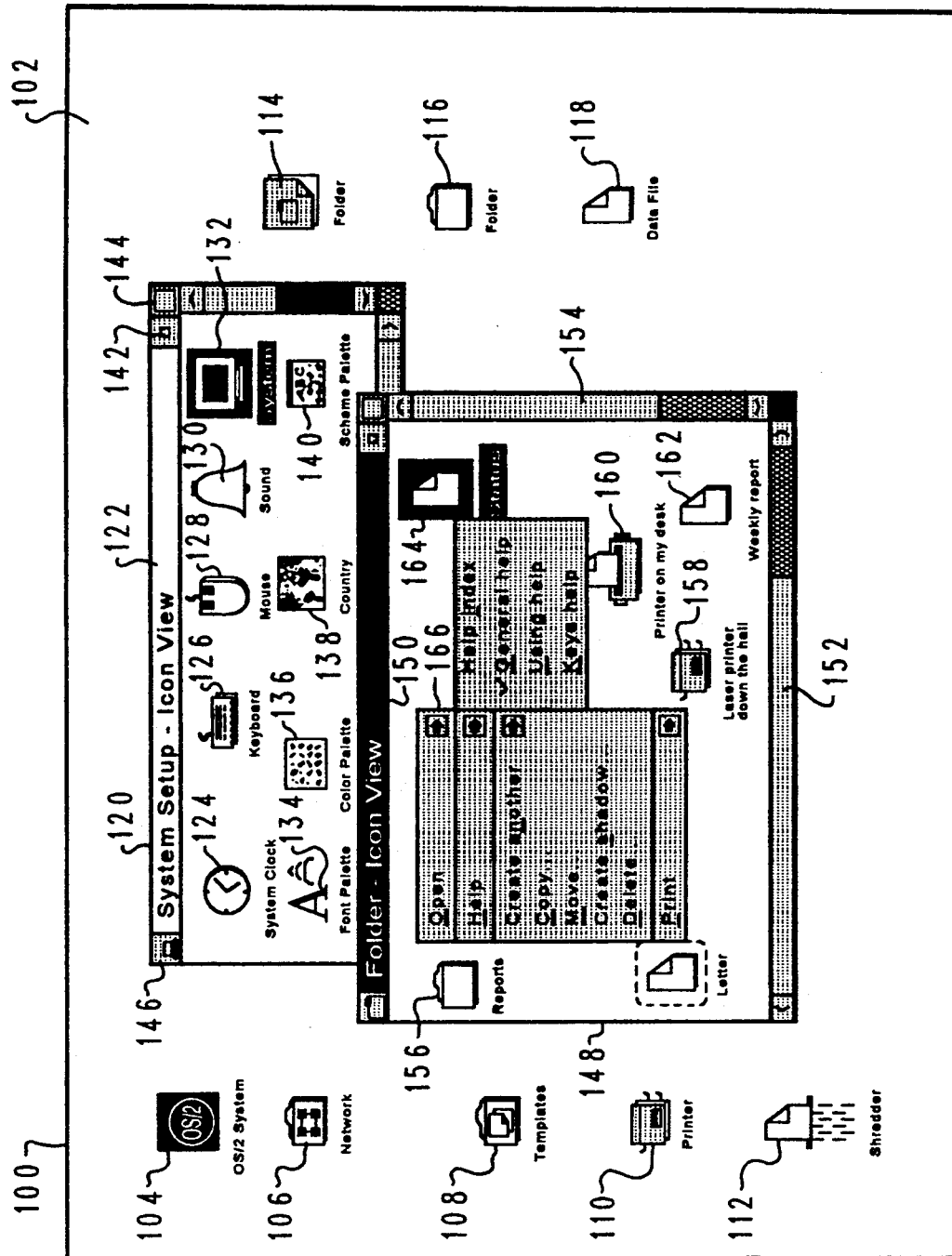


Fig. 3

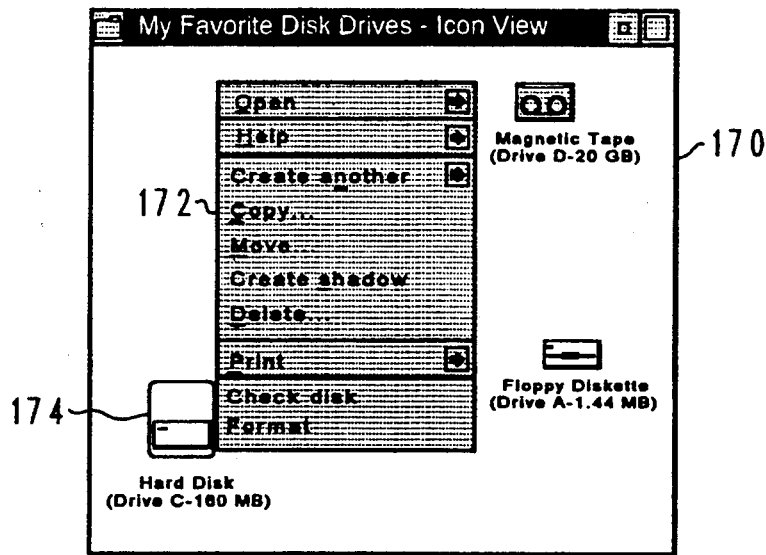


Fig. 4

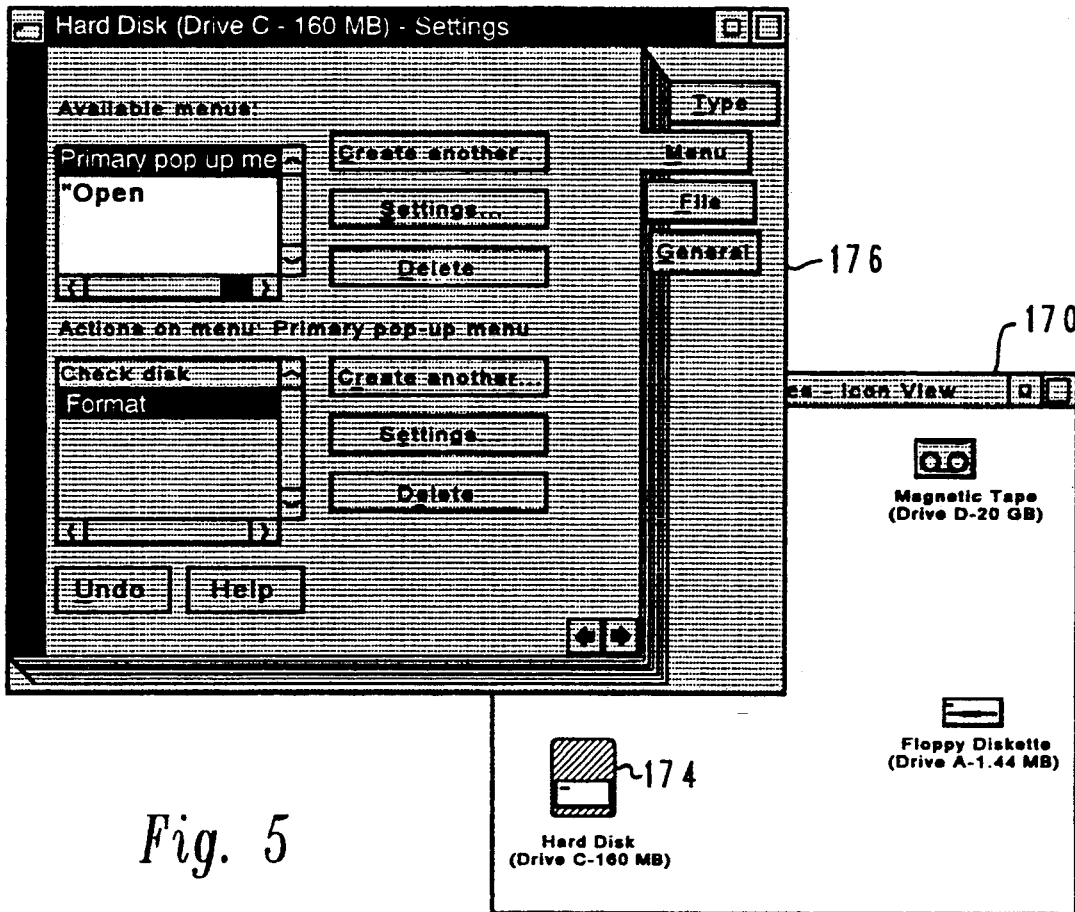


Fig. 5

Explore Litigation Insights

Docket Alarm provides insights to develop a more informed litigation strategy and the peace of mind of knowing you're on top of things.

Real-Time Litigation Alerts



Keep your litigation team up-to-date with **real-time alerts** and advanced team management tools built for the enterprise, all while greatly reducing PACER spend.

Our comprehensive service means we can handle Federal, State, and Administrative courts across the country.

Advanced Docket Research



With over 230 million records, Docket Alarm's cloud-native docket research platform finds what other services can't. Coverage includes Federal, State, plus PTAB, TTAB, ITC and NLRB decisions, all in one place.

Identify arguments that have been successful in the past with full text, pinpoint searching. Link to case law cited within any court document via Fastcase.

Analytics At Your Fingertips



Learn what happened the last time a particular judge, opposing counsel or company faced cases similar to yours.

Advanced out-of-the-box PTAB and TTAB analytics are always at your fingertips.

API

Docket Alarm offers a powerful API (application programming interface) to developers that want to integrate case filings into their apps.

LAW FIRMS

Build custom dashboards for your attorneys and clients with live data direct from the court.

Automate many repetitive legal tasks like conflict checks, document management, and marketing.

FINANCIAL INSTITUTIONS

Litigation and bankruptcy checks for companies and debtors.

E-DISCOVERY AND LEGAL VENDORS

Sync your system to PACER to automate legal marketing.