



US006285890B1

(12) **United States Patent**  
**Panian**

(10) **Patent No.: US 6,285,890 B1**  
(45) **Date of Patent: Sep. 4, 2001**

(54) **AUTOMATIC SENSING OF COMMUNICATION OR ACCESSORIES FOR MOBILE TERMINALS**

(75) Inventor: **Jim Panian**, Cary, NC (US)

(73) Assignee: **Ericsson, Inc.**, Research Triangle Park, NC (US)

(\*) Notice: Subject to any disclaimer, the term of this patent is extended or adjusted under 35 U.S.C. 154(b) by 0 days.

(21) Appl. No.: **09/237,587**

(22) Filed: **Jan. 26, 1999**

(51) **Int. Cl.**<sup>7</sup> ..... **H04B 1/38**

(52) **U.S. Cl.** ..... **455/557; 455/550; 455/575**

(58) **Field of Search** ..... **455/557, 426, 455/556, 550, 575, 90**

(56) **References Cited**

**U.S. PATENT DOCUMENTS**

4,972,457	*	11/1990	O'Sullivan	.....	455/556
5,479,479	*	12/1995	Braitberg et al.	.....	455/404
5,568,536	*	10/1996	Tiller et al.	.....	455/557
5,781,612		7/1998	Choi et al.	.....	455/435
5,793,843	*	8/1998	Morris	.....	455/557
5,802,483	*	9/1998	Morris	.....	455/557

5,864,763	*	1/1999	Leung et al.	.....	455/557
5,884,191	*	3/1999	Karpus et al.	.....	455/557
5,956,651	*	9/1999	Wilkie et al.	.....	455/558
5,983,100	*	11/1999	Johansson et al.	.....	455/575
6,006,109	*	12/1999	Shin	.....	455/557

**FOREIGN PATENT DOCUMENTS**

2325820	12/1998	(GB)	.....	H04Q/7/32
94/09586	4/1994	(WO)	.....	H04M/11/00
98/14022	4/1999	(WO)	.....	H04Q/7/32

\* cited by examiner

*Primary Examiner*—William Trost

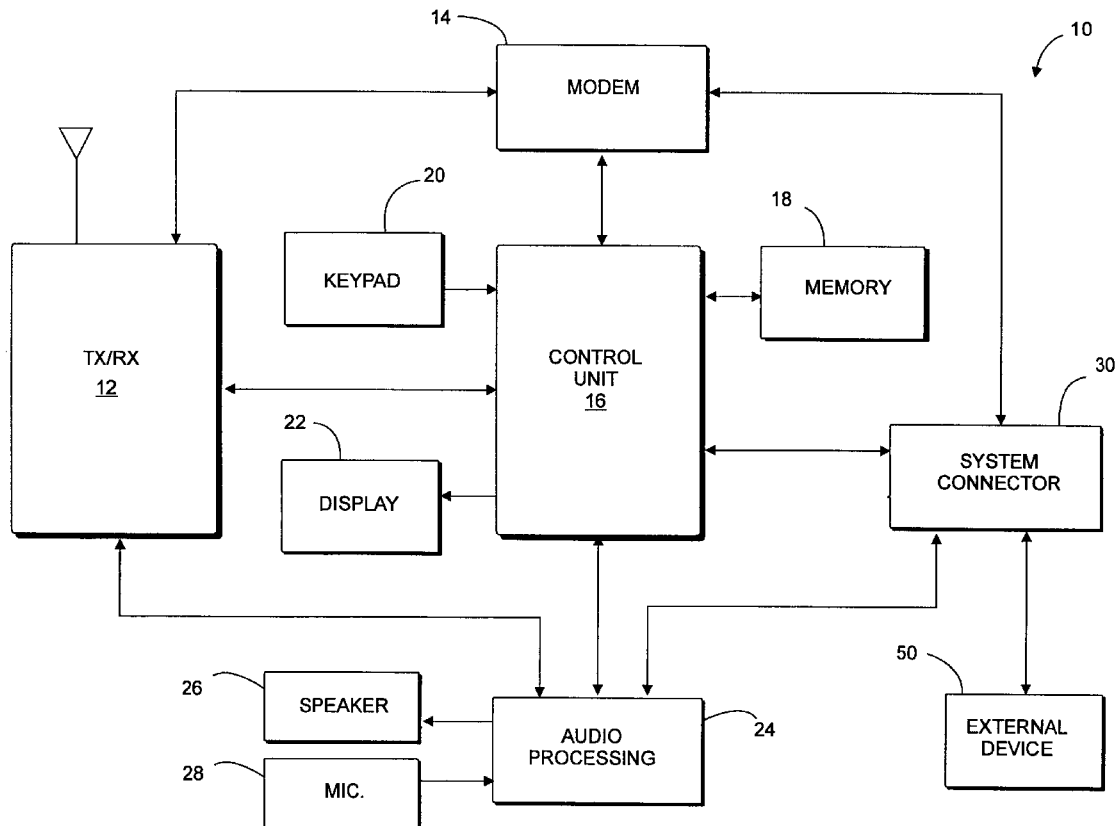
*Assistant Examiner*—Rafael Perez-Gutierrez

(74) *Attorney, Agent, or Firm*—Coats & Bennett

(57) **ABSTRACT**

A mobile communication device has data/fax capabilities to enable data/fax communications by a connected communication terminal. The mobile communication device includes a system interface that is used in a default mode to connect the phone to a phone accessory. The system interface is also used to connect a communication terminal to the phone for data/fax communications in a communication mode. The phone detects the presence of the communication terminal when a communication session is initiated by the communication terminal and automatically changes to a communication mode without user input.

**16 Claims, 5 Drawing Sheets**



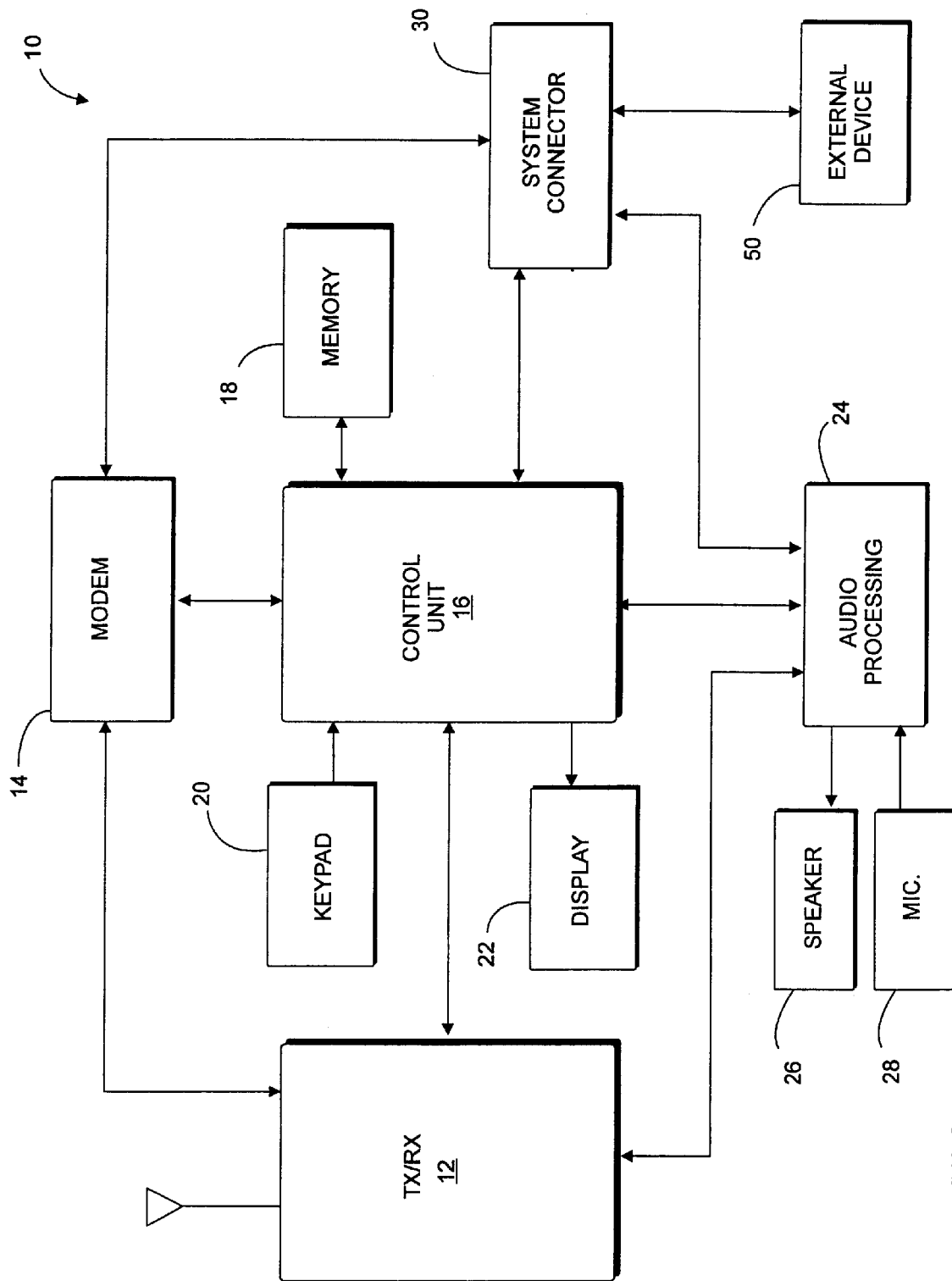


FIG. 1

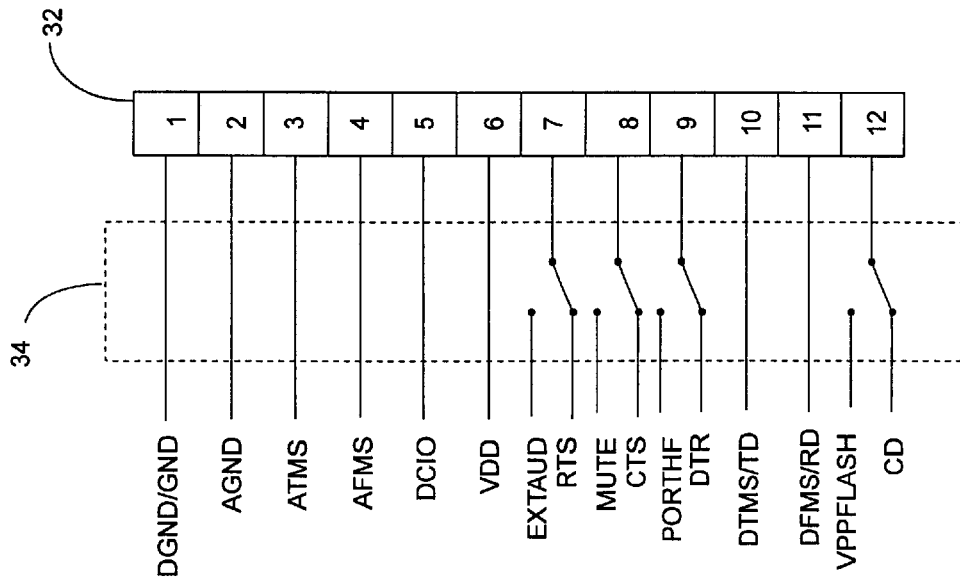


FIG. 2B

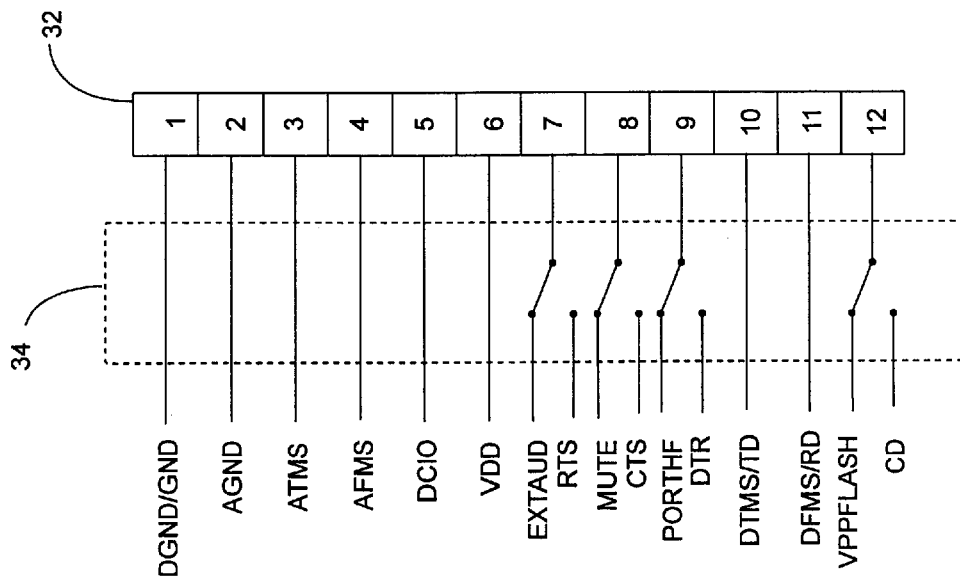


FIG. 2A

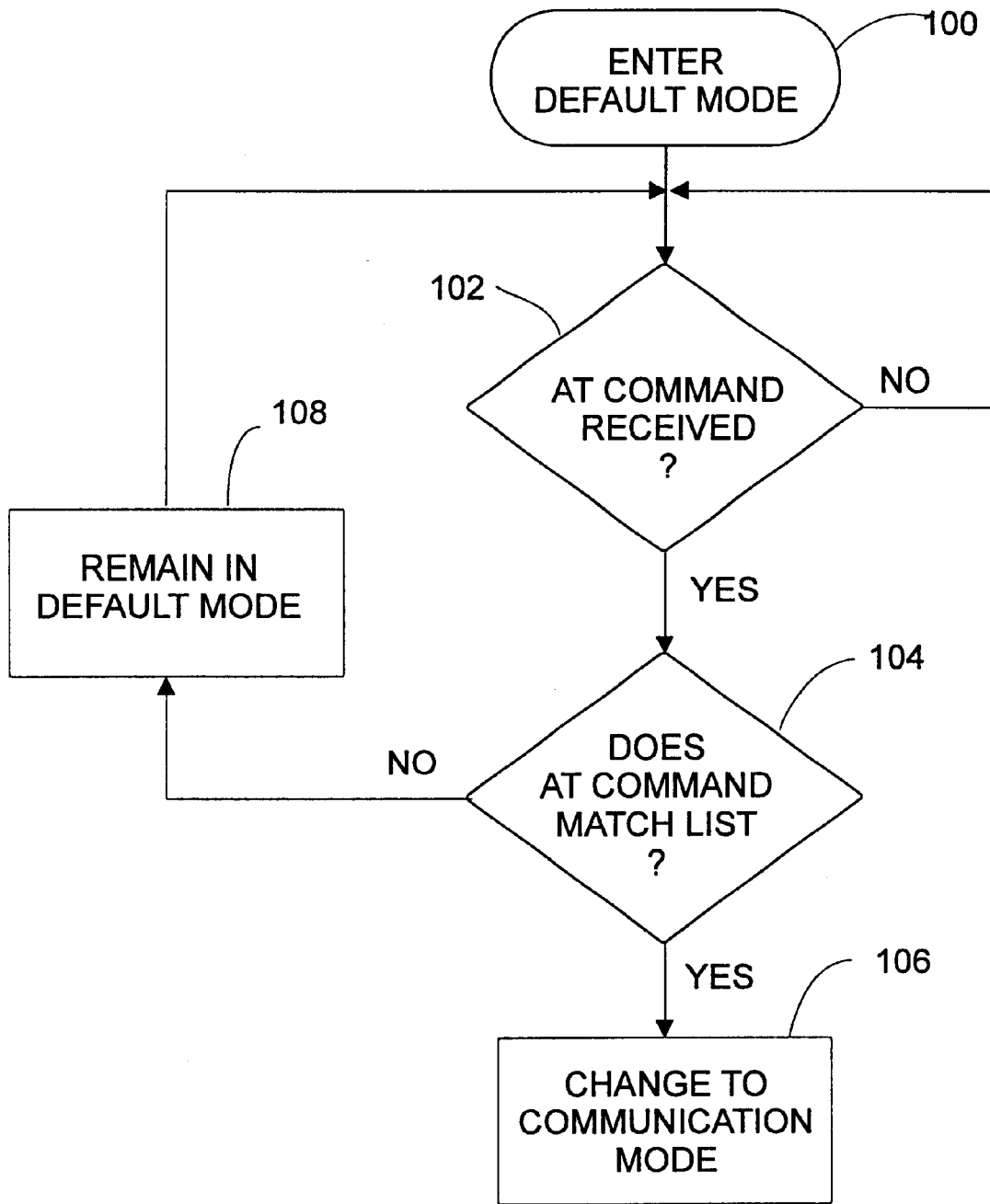


FIG. 3

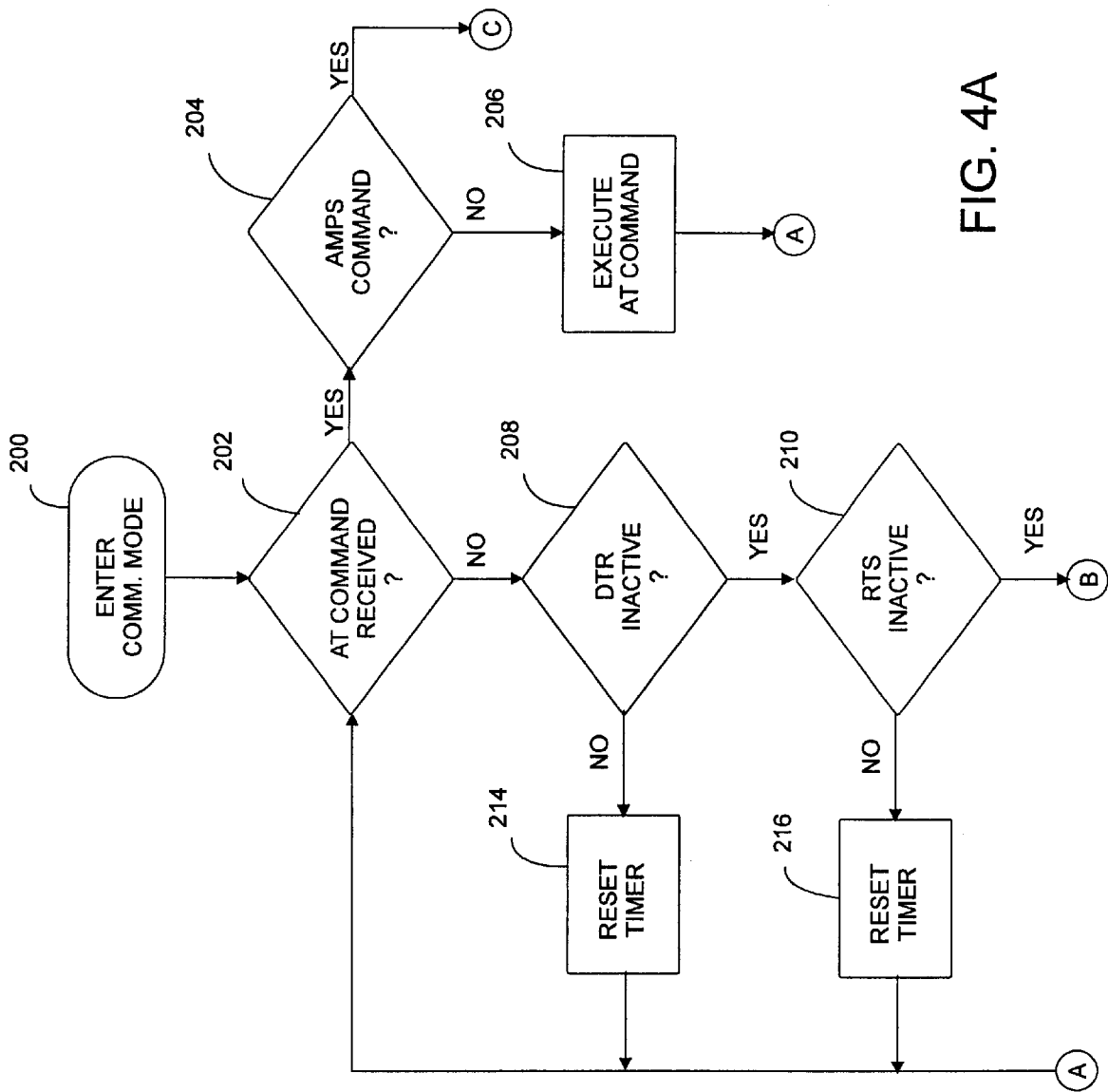


FIG. 4A

# Explore Litigation Insights

Docket Alarm provides insights to develop a more informed litigation strategy and the peace of mind of knowing you're on top of things.

## Real-Time Litigation Alerts



Keep your litigation team up-to-date with **real-time alerts** and advanced team management tools built for the enterprise, all while greatly reducing PACER spend.

Our comprehensive service means we can handle Federal, State, and Administrative courts across the country.

## Advanced Docket Research



With over 230 million records, Docket Alarm's cloud-native docket research platform finds what other services can't. Coverage includes Federal, State, plus PTAB, TTAB, ITC and NLRB decisions, all in one place.

Identify arguments that have been successful in the past with full text, pinpoint searching. Link to case law cited within any court document via Fastcase.

## Analytics At Your Fingertips



Learn what happened the last time a particular judge, opposing counsel or company faced cases similar to yours.

Advanced out-of-the-box PTAB and TTAB analytics are always at your fingertips.

## API

Docket Alarm offers a powerful API (application programming interface) to developers that want to integrate case filings into their apps.

## LAW FIRMS

Build custom dashboards for your attorneys and clients with live data direct from the court.

Automate many repetitive legal tasks like conflict checks, document management, and marketing.

## FINANCIAL INSTITUTIONS

Litigation and bankruptcy checks for companies and debtors.

## E-DISCOVERY AND LEGAL VENDORS

Sync your system to PACER to automate legal marketing.