



US006668353B1

(12) **United States Patent**
Yurkovic

(10) **Patent No.:** **US 6,668,353 B1**
(45) **Date of Patent:** **Dec. 23, 2003**

(54) **SPACE/TIME PORTALS FOR COMPUTER SYSTEMS**

6,332,127 B1 * 12/2001 Bandera et al. 705/14
6,353,398 B1 * 3/2002 Amin et al. 340/995

(75) Inventor: **Robert J. Yurkovic**, Ringwood, NJ (US)

* cited by examiner

(73) Assignee: **Lucent Technologies Inc.**, Murray Hill, NJ (US)

Primary Examiner—Stephen S. Hong

(*) Notice: Subject to any disclaimer, the term of this patent is extended or adjusted under 35 U.S.C. 154(b) by 0 days.

(57) **ABSTRACT**

A portal defines a set of information requests used to gather various types of information in order to present to a user a single composite display that essentially provides the user with his or her own personal web page or view of information. A space/time portal is a particular type of portal whose set of information requests is automatically modified as a function of a specified location or a specified time or both. In one configuration, the specified location and time are themselves selected automatically to modify the space/time portal in real time based on the current location and time for the user. In another configuration, the user can manually change the selection of the specified location and/or time. The space/time portal is then automatically modified based on the new selections, and the composite display is updated in real time accordingly.

(21) Appl. No.: **09/276,244**

(22) Filed: **Mar. 25, 1999**

(51) **Int. Cl.**⁷ **G06F 17/21**

(52) **U.S. Cl.** **715/501.1; 715/513**

(58) **Field of Search** **707/501.1, 513; 705/14; 715/701.1, 513**

(56) **References Cited**

U.S. PATENT DOCUMENTS

5,983,227 A * 11/1999 Nazem et al. 707/10

19 Claims, 5 Drawing Sheets

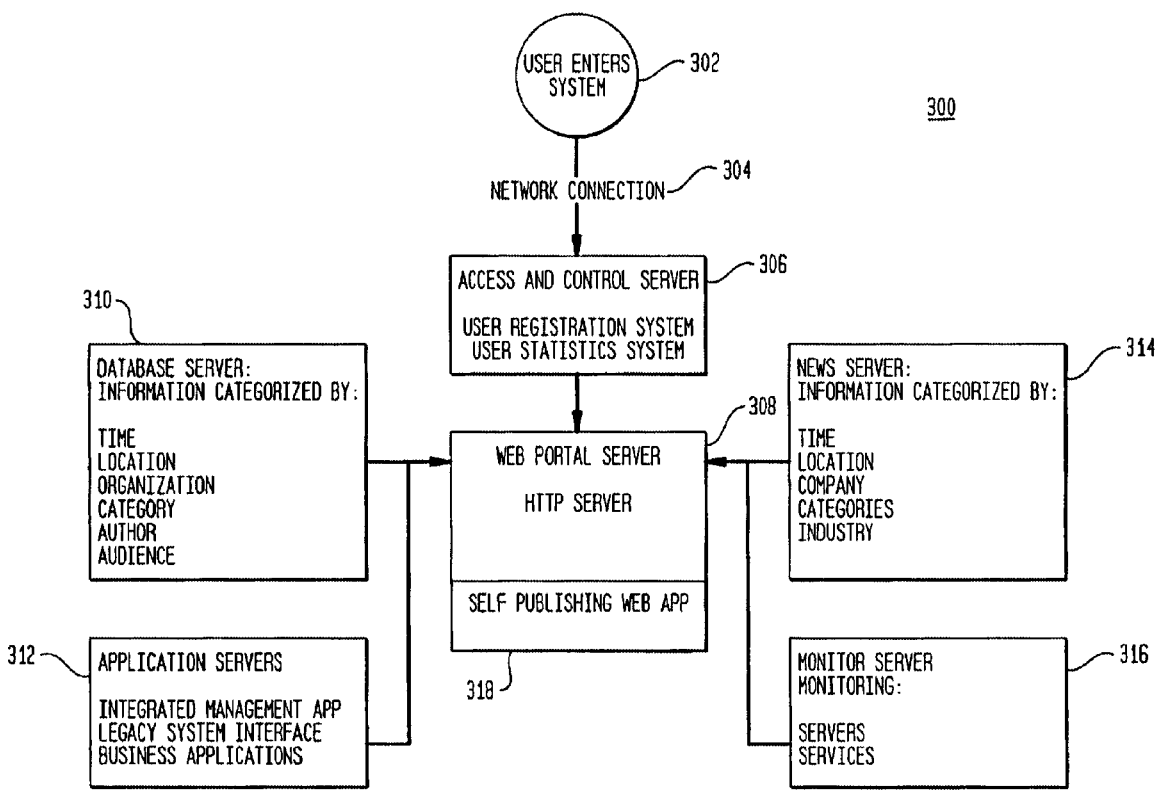


FIG. 1

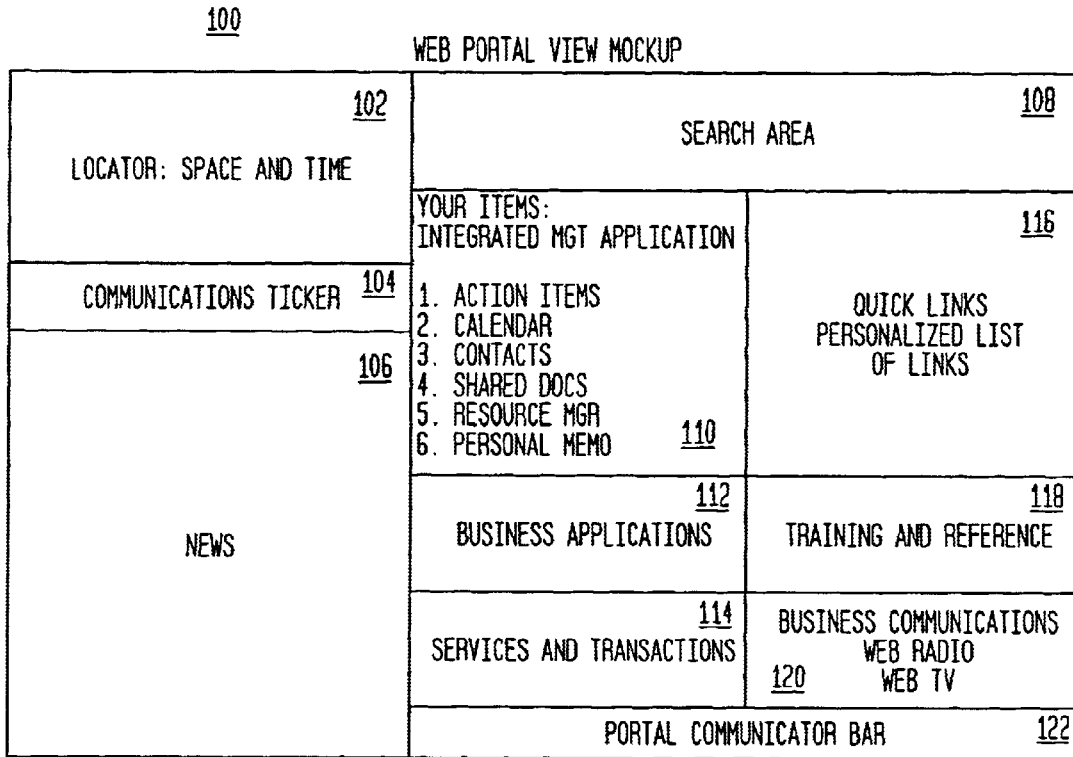
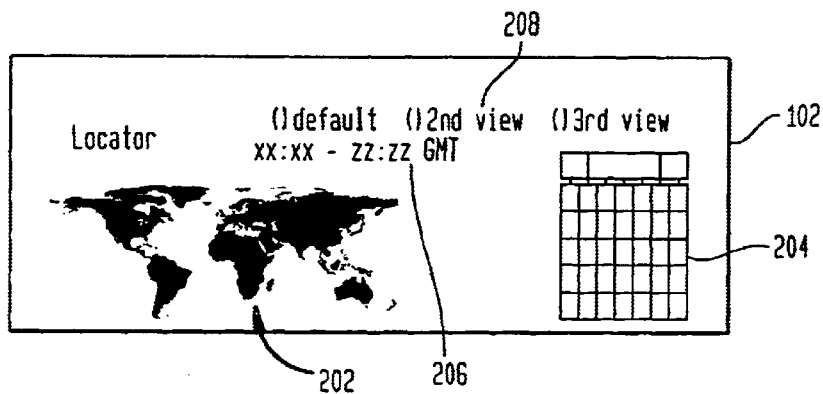


FIG. 2



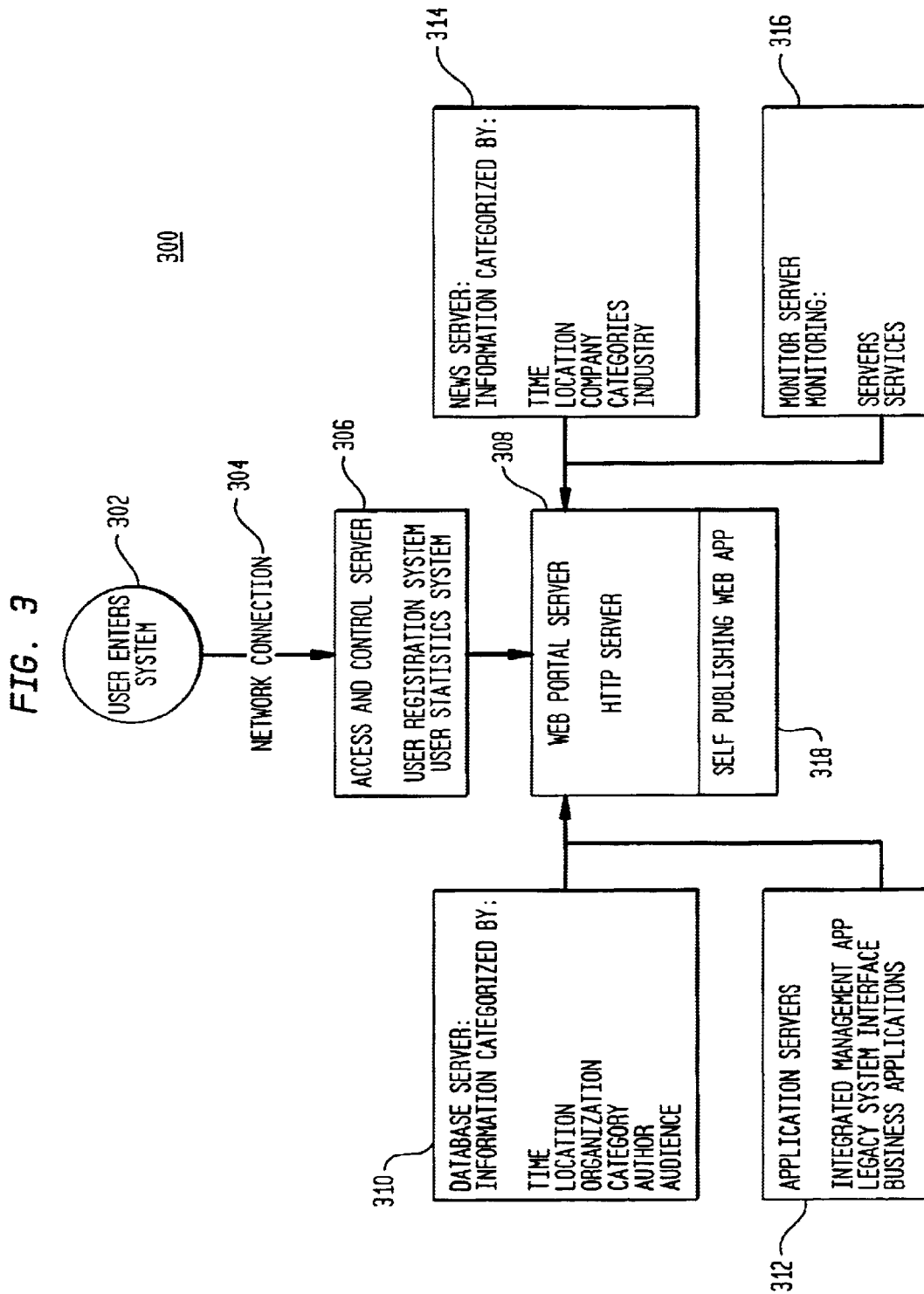


FIG. 4

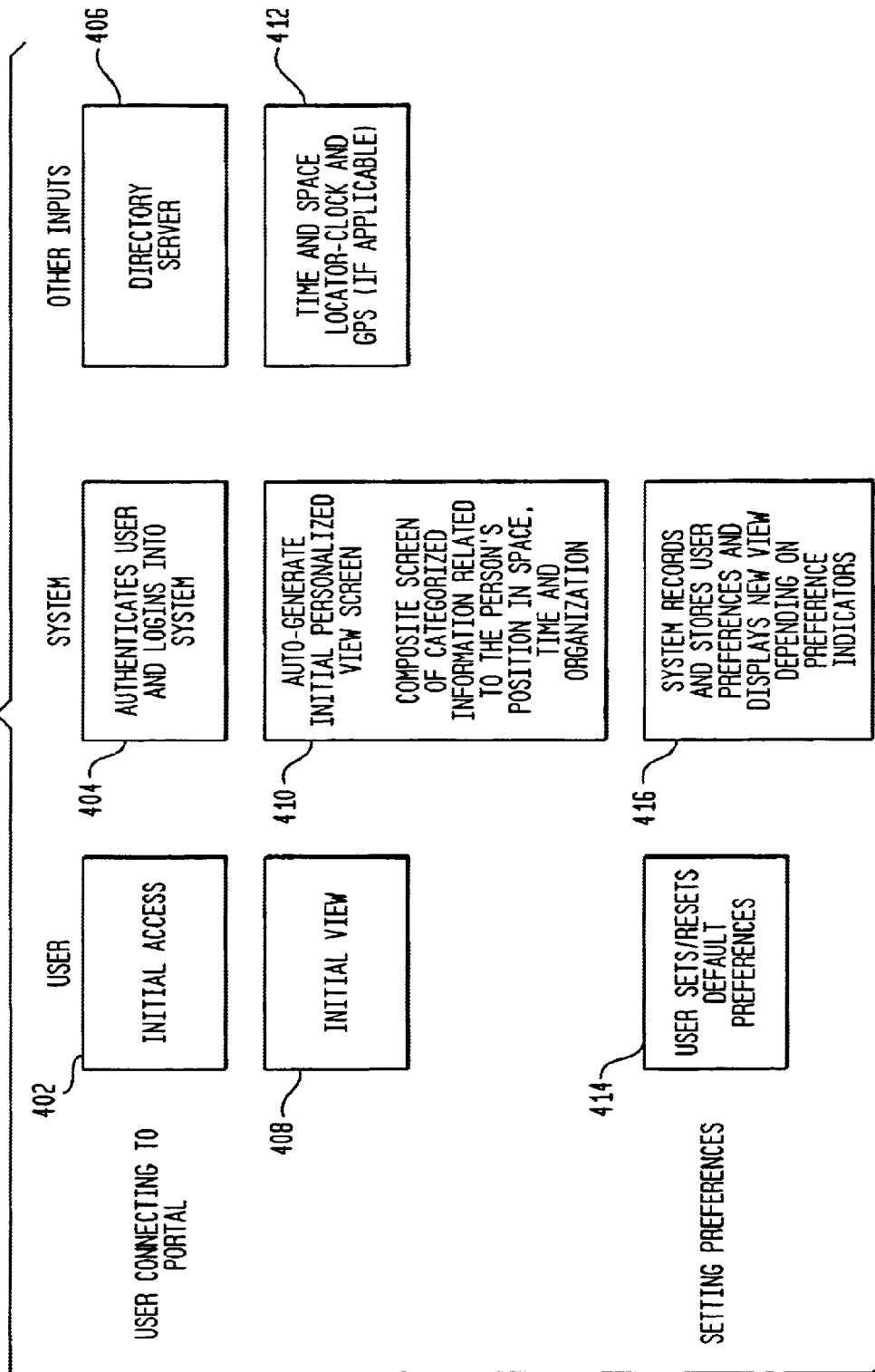
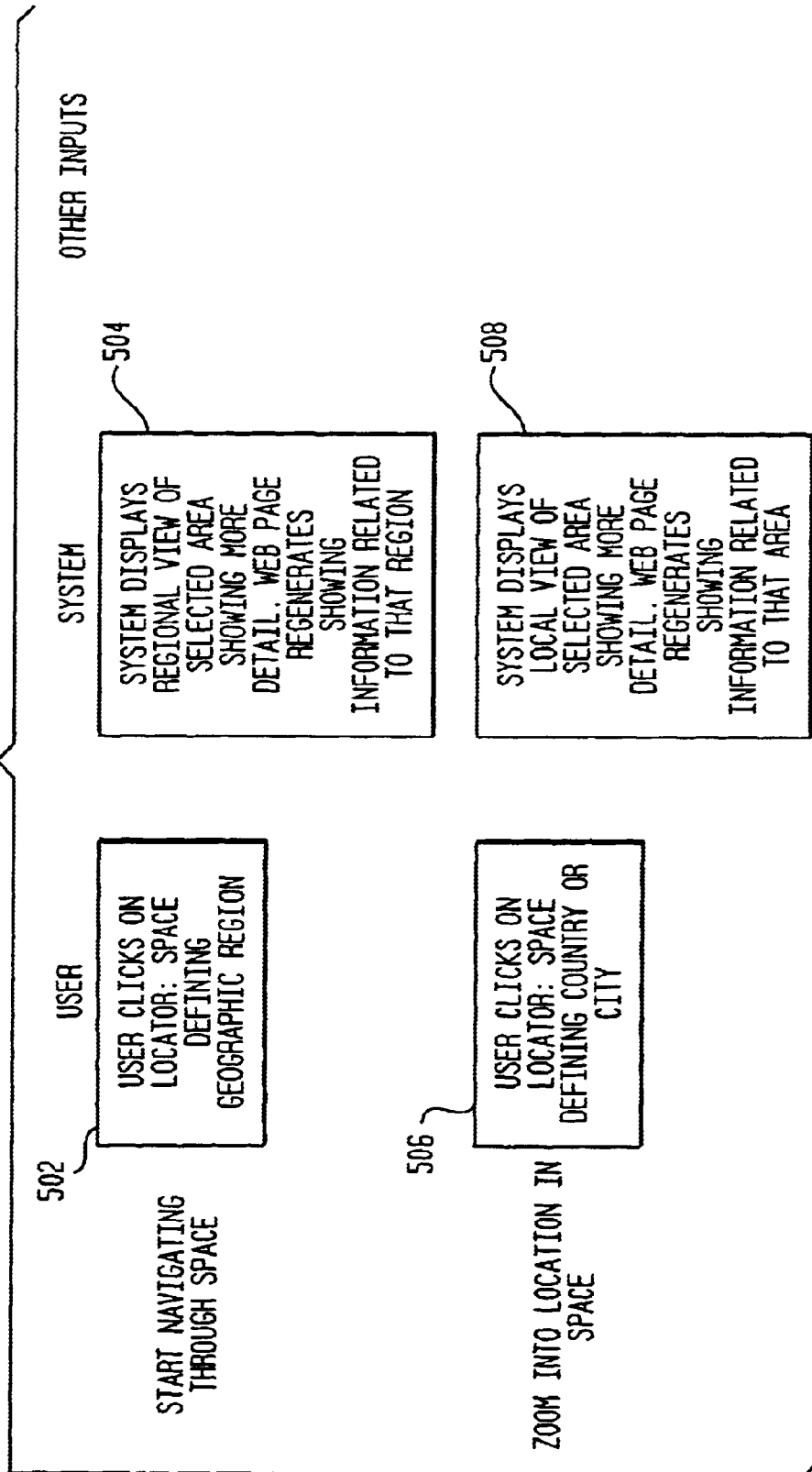


FIG. 5



Explore Litigation Insights

Docket Alarm provides insights to develop a more informed litigation strategy and the peace of mind of knowing you're on top of things.

Real-Time Litigation Alerts



Keep your litigation team up-to-date with **real-time alerts** and advanced team management tools built for the enterprise, all while greatly reducing PACER spend.

Our comprehensive service means we can handle Federal, State, and Administrative courts across the country.

Advanced Docket Research



With over 230 million records, Docket Alarm's cloud-native docket research platform finds what other services can't. Coverage includes Federal, State, plus PTAB, TTAB, ITC and NLRB decisions, all in one place.

Identify arguments that have been successful in the past with full text, pinpoint searching. Link to case law cited within any court document via Fastcase.

Analytics At Your Fingertips



Learn what happened the last time a particular judge, opposing counsel or company faced cases similar to yours.

Advanced out-of-the-box PTAB and TTAB analytics are always at your fingertips.

API

Docket Alarm offers a powerful API (application programming interface) to developers that want to integrate case filings into their apps.

LAW FIRMS

Build custom dashboards for your attorneys and clients with live data direct from the court.

Automate many repetitive legal tasks like conflict checks, document management, and marketing.

FINANCIAL INSTITUTIONS

Litigation and bankruptcy checks for companies and debtors.

E-DISCOVERY AND LEGAL VENDORS

Sync your system to PACER to automate legal marketing.