



US006934561B2

(12) **United States Patent**
Burrus, IV

(10) **Patent No.:** **US 6,934,561 B2**
(45) **Date of Patent:** **Aug. 23, 2005**

(54) **CABLE OR MODULE IDENTIFICATION APPARATUS AND METHOD**

(75) Inventor: **Philip H. Burrus, IV**, Lilburn, GA (US)

(73) Assignee: **Motorola, Inc.**, Schaumburg, IL (US)

(*) Notice: Subject to any disclaimer, the term of this patent is extended or adjusted under 35 U.S.C. 154(b) by 539 days.

(21) Appl. No.: **09/961,049**

(22) Filed: **Sep. 24, 2001**

(65) **Prior Publication Data**

US 2003/0060243 A1 Mar. 27, 2003

(51) Int. Cl.⁷ **H04M 1/00**; H04B 1/38

(52) U.S. Cl. **455/559**; 320/106; 307/125

(58) Field of Search 455/418, 420, 455/550.1, 559, 572-573; 307/112, 125; 320/106-110, 112, 125; 324/66

(56) **References Cited**

U.S. PATENT DOCUMENTS

4,006,396 A 2/1977 Bogut
5,184,059 A * 2/1993 Patino et al. 320/125

5,818,197 A * 10/1998 Miller et al. 320/107
5,822,427 A 10/1998 Braitberg et al.
6,337,557 B1 * 1/2002 Kates et al. 320/112
6,509,659 B1 * 1/2003 Carroll et al. 307/125
6,661,805 B1 * 12/2003 Romano et al. 370/450

* cited by examiner

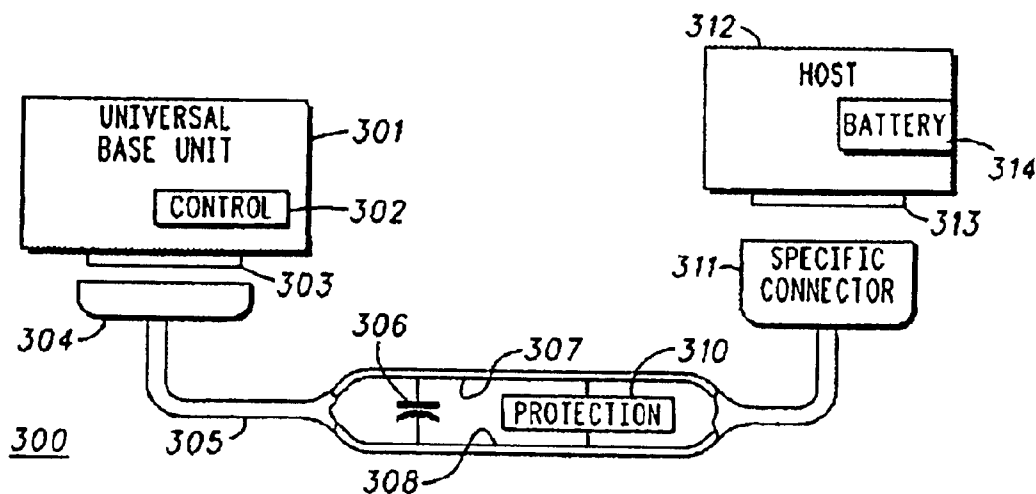
Primary Examiner—George Eng

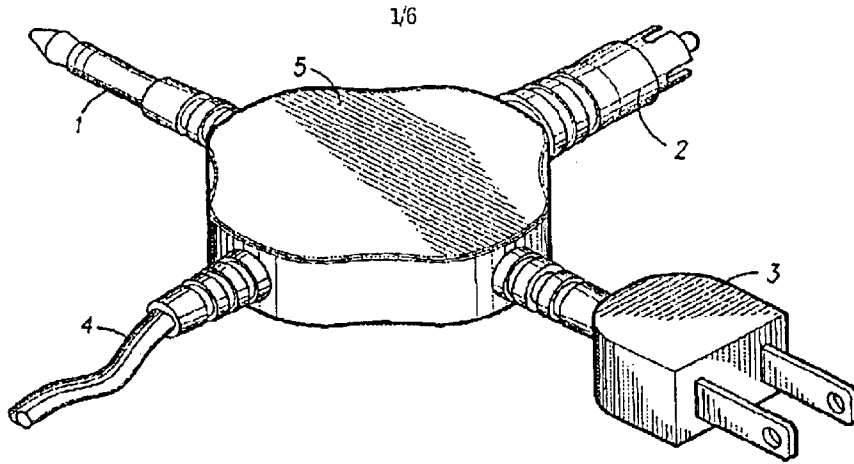
(74) *Attorney, Agent, or Firm*—Philip H. Burrus, IV

(57) **ABSTRACT**

This invention includes a universal base unit having a plurality of cables, each corresponding to a unique electronic host device. The cable includes a capacitor having a value corresponding to a particular electronic host device. The capacitor is coupled in series with a resistor to ground in the universal base unit. The cable further includes a unique mating connector for coupling to the electronic host device. The universal base unit identifies the cable by actuating a step function across the capacitor-resistor network, causing an exponentially decaying waveform. A microprocessor in the host device then measures the width of the waveform to determine the identity of the cable or host device. The system allows a user to carry a single power supply or universal base unit with multiple cables as opposed to having to transport a different accessory for each electronic device.

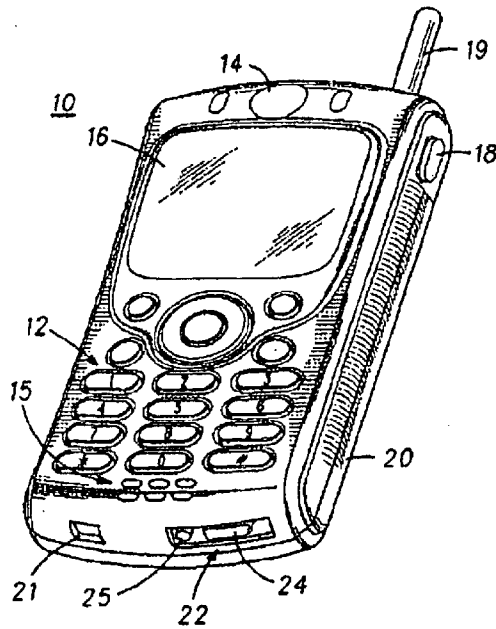
9 Claims, 6 Drawing Sheets





-PRIOR ART-

FIG. 1

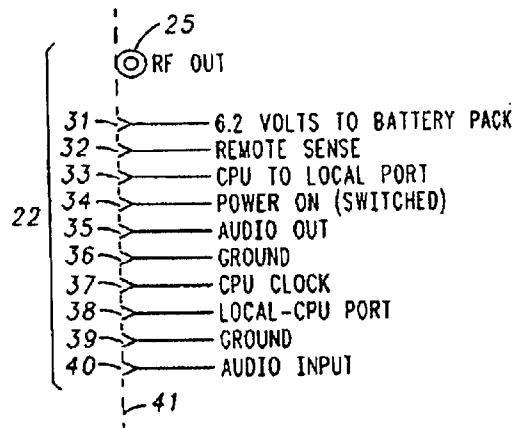


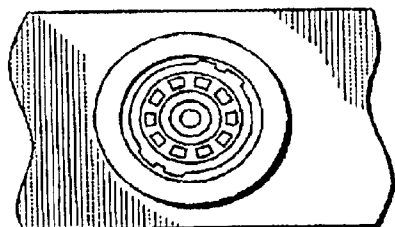
-PRIOR ART-

FIG. 2

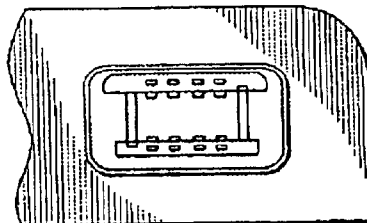
FIG. 4

-PRIOR ART-

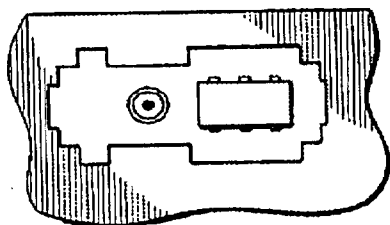




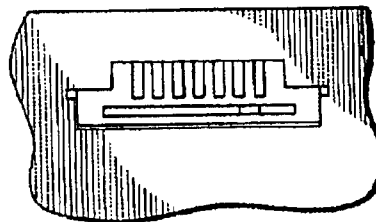
-PRIOR ART-
FIG. 3A



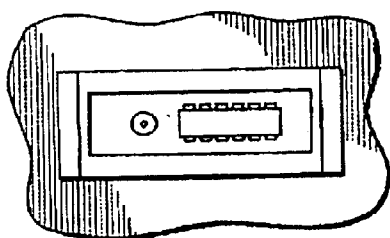
-PRIOR ART-
FIG. 3B



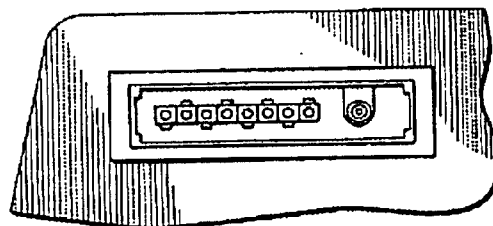
-PRIOR ART-
FIG. 3C



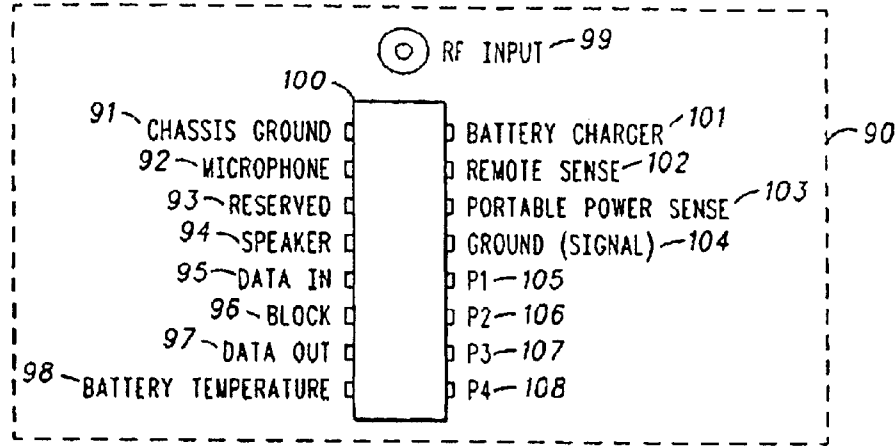
-PRIOR ART-
FIG. 3D



-PRIOR ART-
FIG. 3E



-PRIOR ART-
FIG. 3F



-PRIOR ART-

FIG. 5

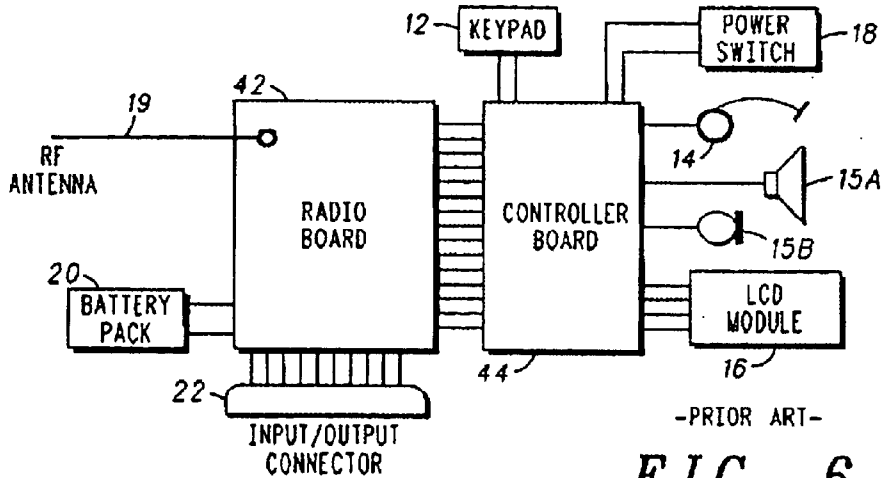


FIG. 6

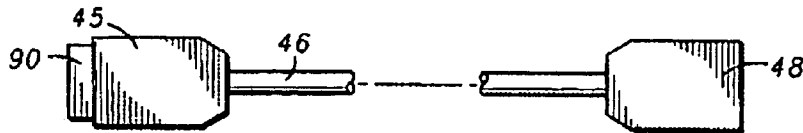
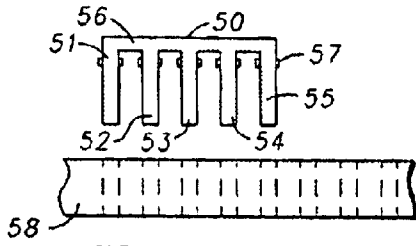
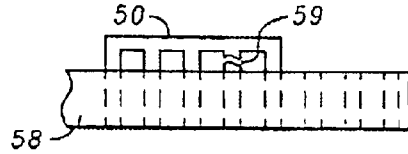


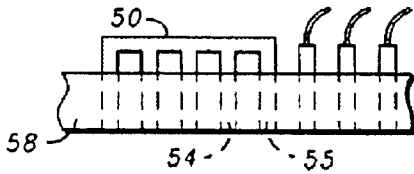
FIG. 7



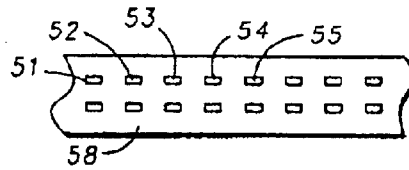
-PRIOR ART-
FIG. 8A



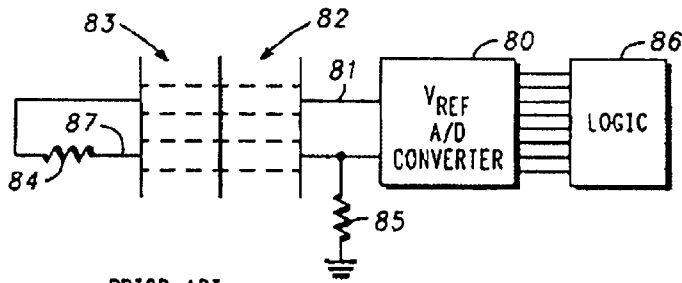
-PRIOR ART-
FIG. 8C



-PRIOR ART-
FIG. 8B



-PRIOR ART-
FIG. 8D



-PRIOR ART-
FIG. 9

Explore Litigation Insights

Docket Alarm provides insights to develop a more informed litigation strategy and the peace of mind of knowing you're on top of things.

Real-Time Litigation Alerts



Keep your litigation team up-to-date with **real-time alerts** and advanced team management tools built for the enterprise, all while greatly reducing PACER spend.

Our comprehensive service means we can handle Federal, State, and Administrative courts across the country.

Advanced Docket Research



With over 230 million records, Docket Alarm's cloud-native docket research platform finds what other services can't. Coverage includes Federal, State, plus PTAB, TTAB, ITC and NLRB decisions, all in one place.

Identify arguments that have been successful in the past with full text, pinpoint searching. Link to case law cited within any court document via Fastcase.

Analytics At Your Fingertips



Learn what happened the last time a particular judge, opposing counsel or company faced cases similar to yours.

Advanced out-of-the-box PTAB and TTAB analytics are always at your fingertips.

API

Docket Alarm offers a powerful API (application programming interface) to developers that want to integrate case filings into their apps.

LAW FIRMS

Build custom dashboards for your attorneys and clients with live data direct from the court.

Automate many repetitive legal tasks like conflict checks, document management, and marketing.

FINANCIAL INSTITUTIONS

Litigation and bankruptcy checks for companies and debtors.

E-DISCOVERY AND LEGAL VENDORS

Sync your system to PACER to automate legal marketing.