

[54] **METHOD AND APPARATUS FOR ADAPTING A COMMUNICATION INTERFACE DEVICE TO MULTIPLE NETWORKS**

[75] Inventors: **Nicholas A. Thomas**, Salt Lake City; **John Evans**, Riverton; **Richard Bentley**, South Jordan; **Mark L. Gray**, West Valley City, all of Utah

[73] Assignee: **U.S. Robotics Mobile Communications Corp.**, Salt Lake City, Utah

[21] Appl. No.: **410,328**

[22] Filed: **Mar. 24, 1995**

[51] Int. Cl.⁶ **H04M 11/00**

[52] U.S. Cl. **379/93.07; 379/93.29**

[58] Field of Search 379/98, 93, 59, 379/58, 63, 441, 442, 443; 375/222

[56] **References Cited**

U.S. PATENT DOCUMENTS

4,718,080	1/1988	Serrano et al.	379/59
4,991,085	2/1991	Pleva et al.	364/200
5,127,041	6/1992	O'Sullivan	379/59
5,134,648	7/1992	Hochfield et al.	379/98

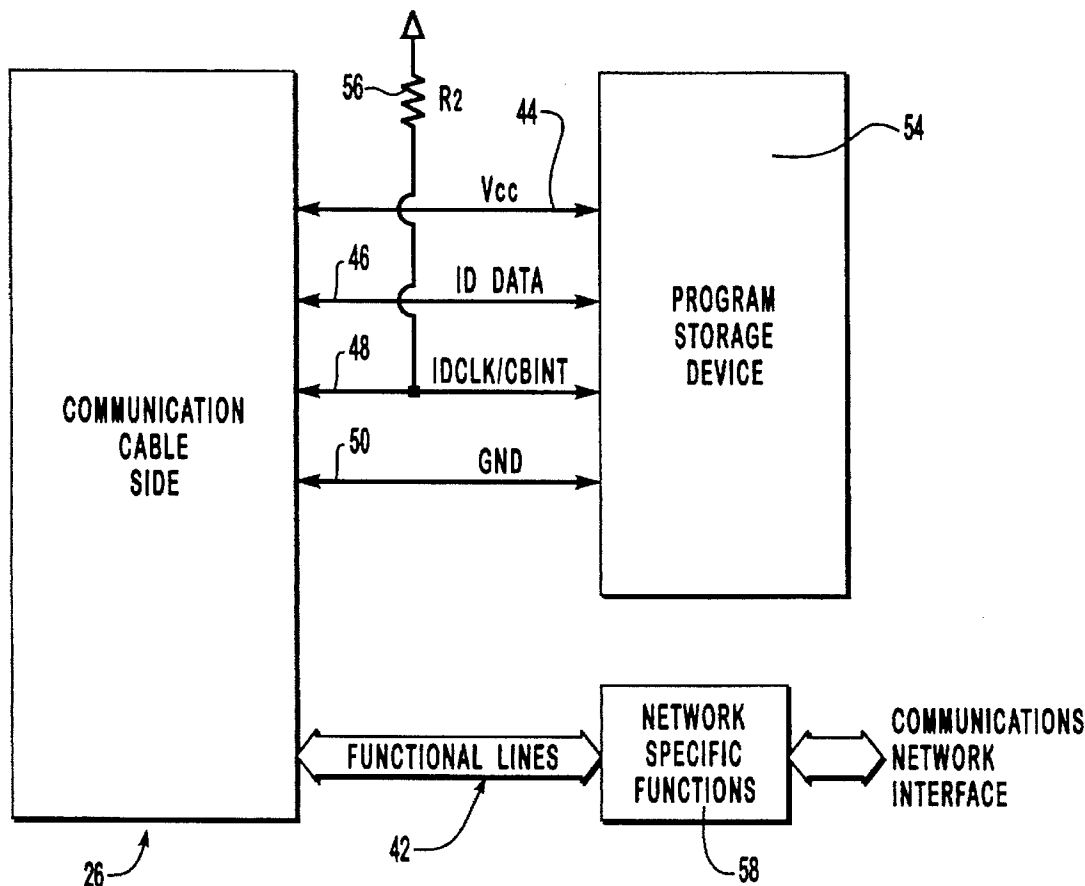
5,167,021	11/1992	Needham	395/275
5,181,858	1/1993	Matz et al.	439/188
5,249,218	9/1993	Sainton	379/98
5,333,177	7/1994	Braitberg et al.	379/59
5,357,625	10/1994	Arends	395/500
5,430,793	7/1995	Ueltzen et al.	379/98

Primary Examiner—Stella Woo
Attorney, Agent, or Firm—Workman, Nydegger & Seeley

[57] **ABSTRACT**

A reconfigurable communication interface system is provided comprising a reconfigurable communication interface device and a communication adapter cable. The reconfigurable communication interface device contains means to identify a valid communication adapter cable. After an attached communication adapter cable is recognized as valid, operational values are downloaded from outside the communication interface device and the communication interface device software is reconfigured. Operational values may be loaded from the communication adapter cable or from the host computer. Adapter cables for a wide variety of applications such as various telephone networks, various cellular telephones, Ethernet networks, PBX type networks, ISDN type networks, optical networks, or other LAN and WAN type networks are provided.

16 Claims, 4 Drawing Sheets



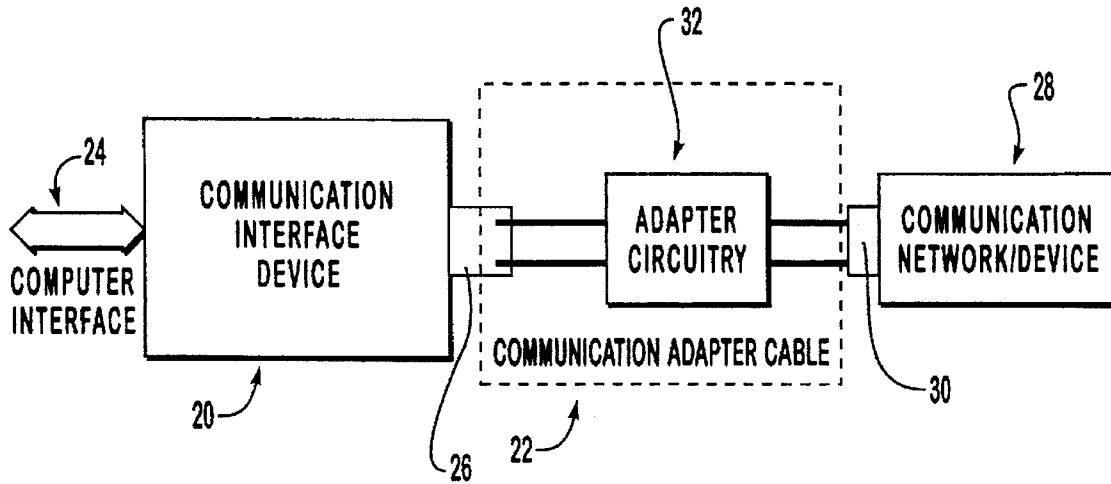


FIG. 1

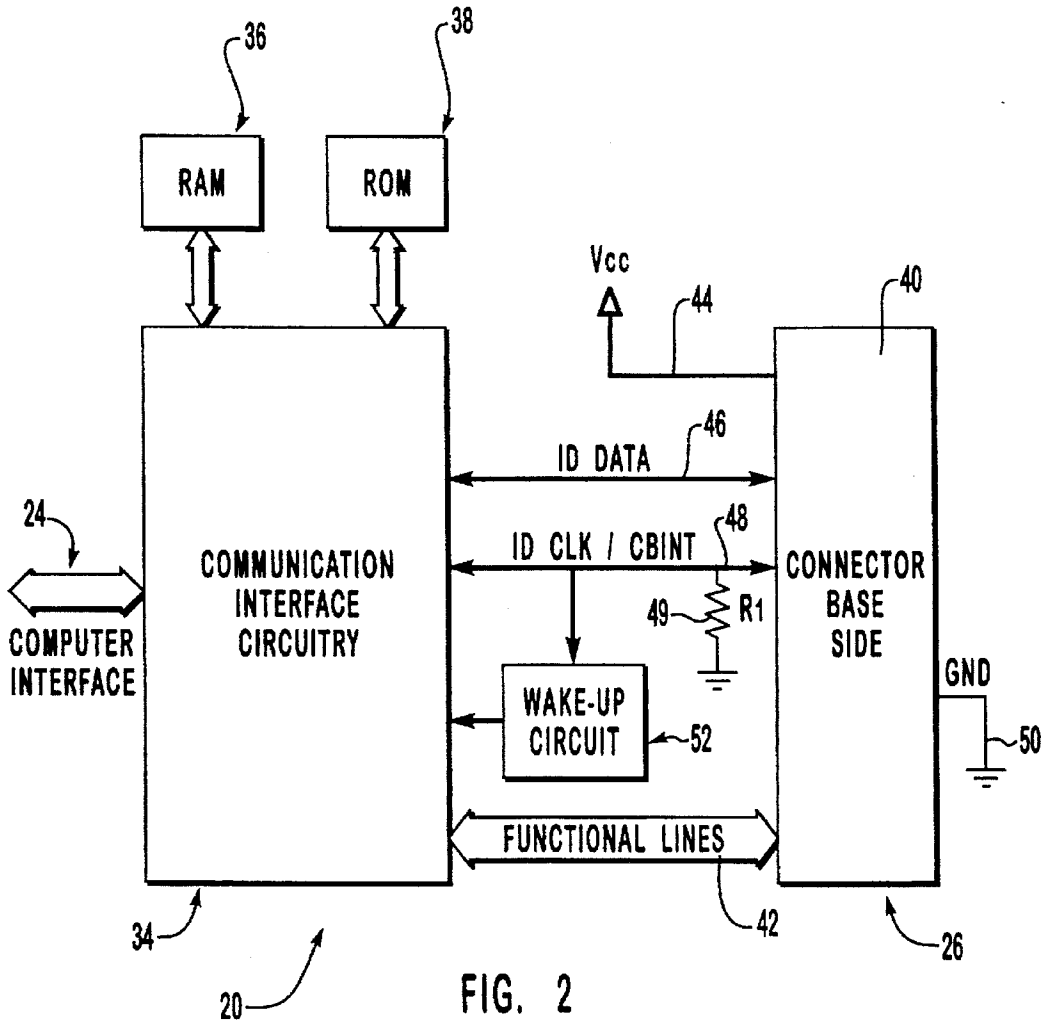


FIG. 2

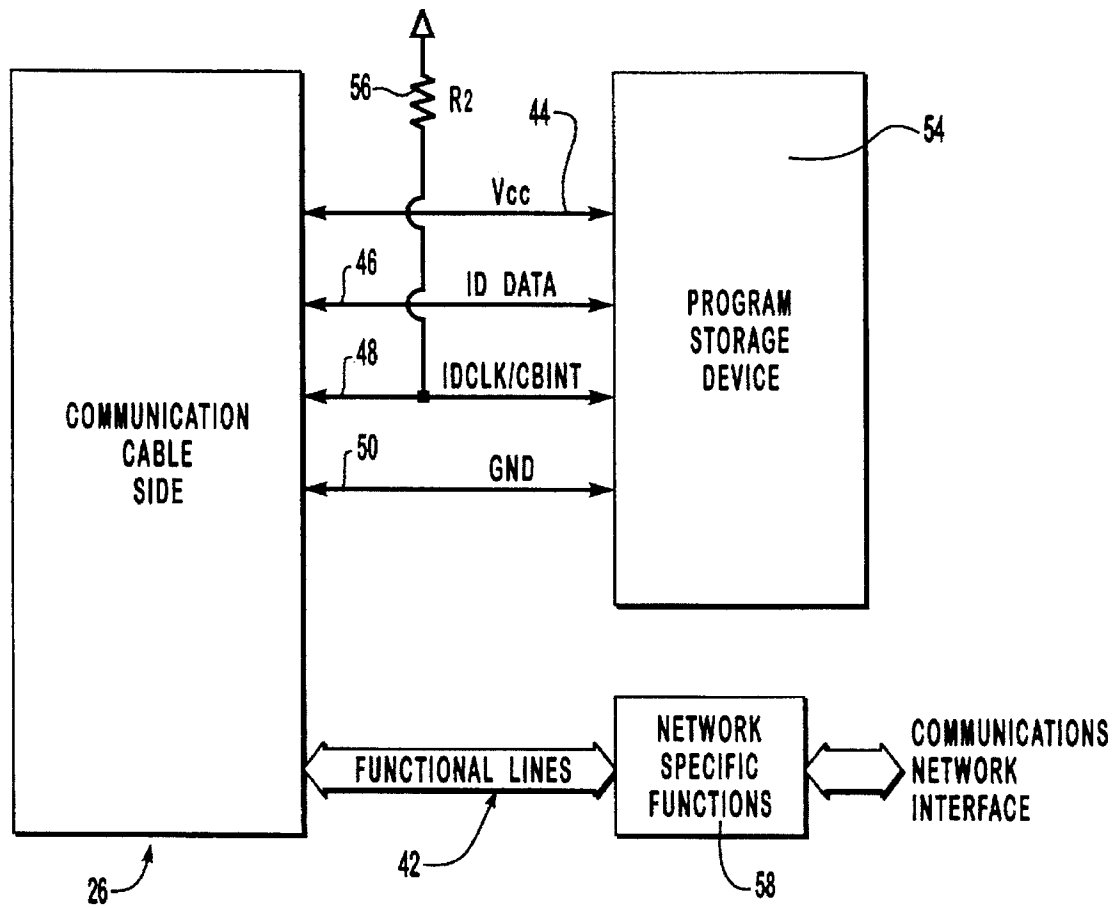


FIG. 3

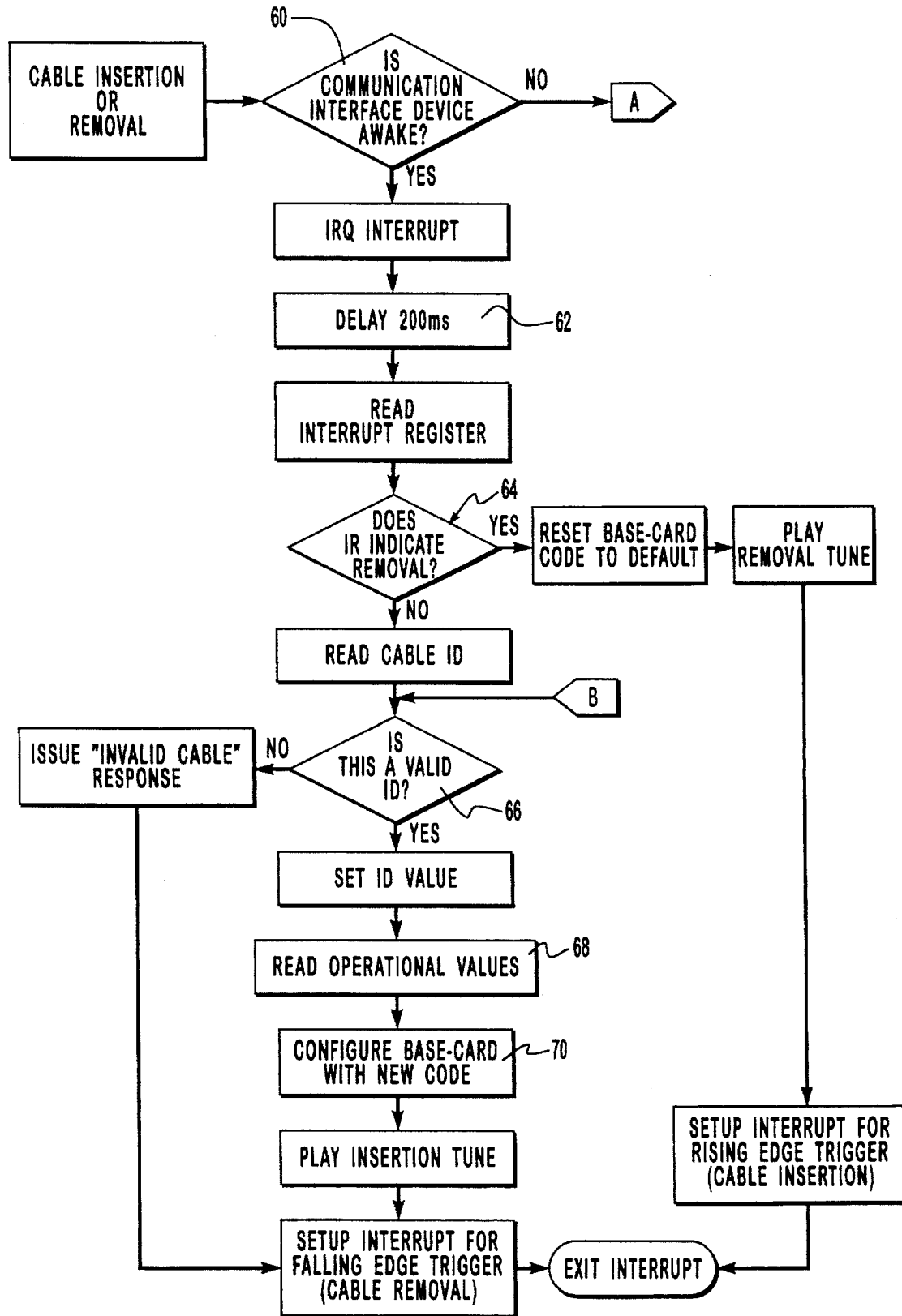


FIG. 4a

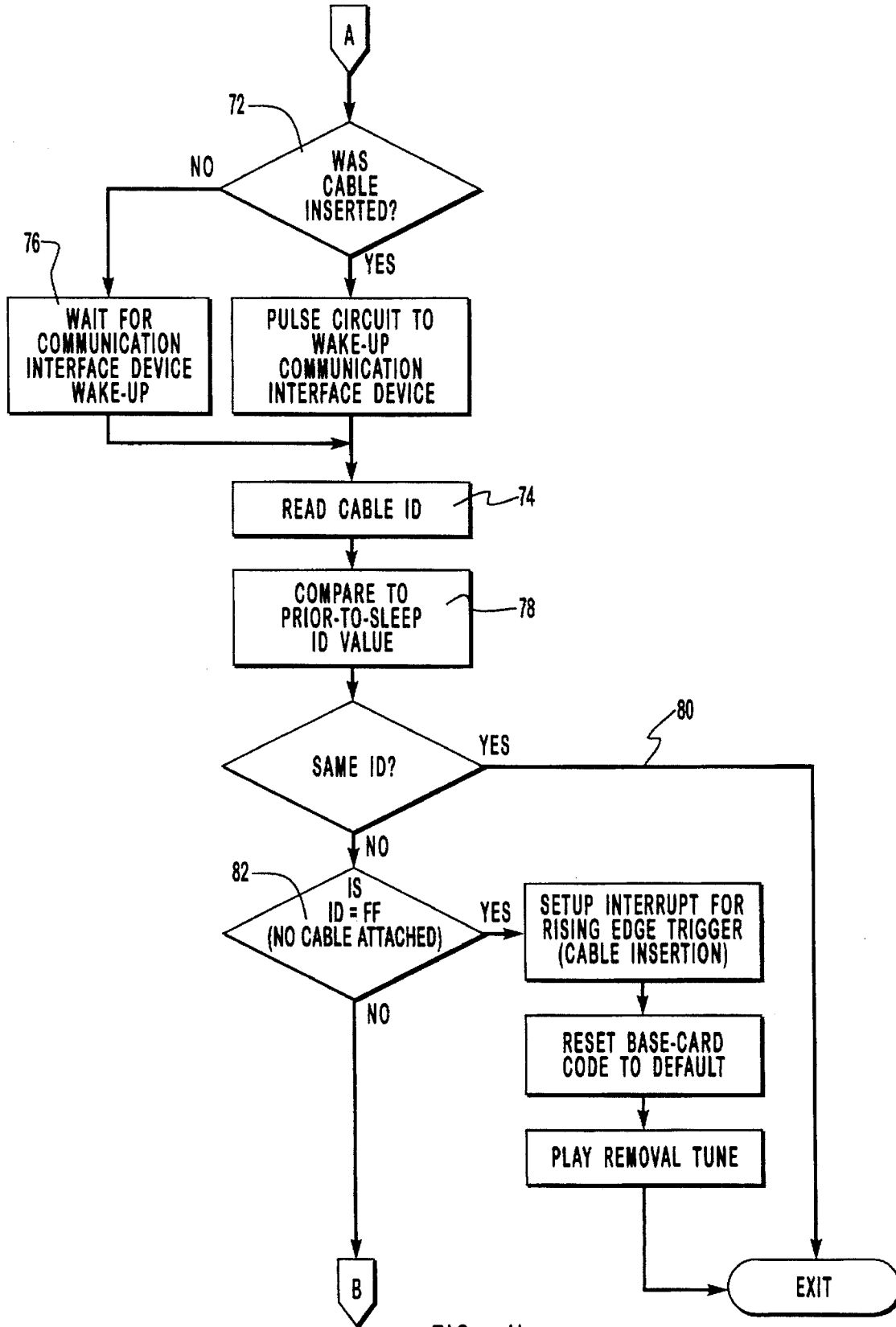


FIG. 4b

Explore Litigation Insights

Docket Alarm provides insights to develop a more informed litigation strategy and the peace of mind of knowing you're on top of things.

Real-Time Litigation Alerts



Keep your litigation team up-to-date with **real-time alerts** and advanced team management tools built for the enterprise, all while greatly reducing PACER spend.

Our comprehensive service means we can handle Federal, State, and Administrative courts across the country.

Advanced Docket Research



With over 230 million records, Docket Alarm's cloud-native docket research platform finds what other services can't. Coverage includes Federal, State, plus PTAB, TTAB, ITC and NLRB decisions, all in one place.

Identify arguments that have been successful in the past with full text, pinpoint searching. Link to case law cited within any court document via Fastcase.

Analytics At Your Fingertips



Learn what happened the last time a particular judge, opposing counsel or company faced cases similar to yours.

Advanced out-of-the-box PTAB and TTAB analytics are always at your fingertips.

API

Docket Alarm offers a powerful API (application programming interface) to developers that want to integrate case filings into their apps.

LAW FIRMS

Build custom dashboards for your attorneys and clients with live data direct from the court.

Automate many repetitive legal tasks like conflict checks, document management, and marketing.

FINANCIAL INSTITUTIONS

Litigation and bankruptcy checks for companies and debtors.

E-DISCOVERY AND LEGAL VENDORS

Sync your system to PACER to automate legal marketing.