

[54] TREATING METHOD

[75] Inventors: Tomonori Narita, Tokyo; Kimihiro Matsuse, Yokohama, both of Japan

[73] Assignee: Tokyo Electron Limited, Tokyo, Japan

[21] Appl. No.: 326,689

[22] Filed: Mar. 21, 1989

[30] Foreign Application Priority Data

Mar. 25, 1988 [JP] Japan ..... 63-72995

[51] Int. Cl.<sup>4</sup> ..... C23C 14/34; C23C 16/00; C03C 15/00

[52] U.S. Cl. .... 204/192.13; 204/192.33; 204/298.03; 204/298.09; 204/298.32; 156/626; 156/643; 427/8; 427/248.1

[58] Field of Search ..... 156/626, 643, 646; 427/8, 248.1; 118/666, 712, 725; 204/298 MT, 298 CS, 298 ET, 192.13, 192.12, 192.32, 192.33

[56] References Cited

U.S. PATENT DOCUMENTS

- 3,573,190 3/1971 Bloom ..... 204/298 MT
- 4,172,020 10/1979 Tisone et al. .... 204/298 MT
- 4,324,631 4/1982 Meckel et al. .... 204/298 MT
- 4,396,478 8/1983 Aizenshtein et al. .... 204/298 ET

- 4,407,708 10/1983 Landau ..... 204/298 MT
- 4,565,601 1/1986 Kakehi et al. .... 204/298 ET
- 4,648,952 3/1987 Savov et al. .... 204/298 MT
- 4,687,544 8/1987 Bersin ..... 204/298 ET

FOREIGN PATENT DOCUMENTS

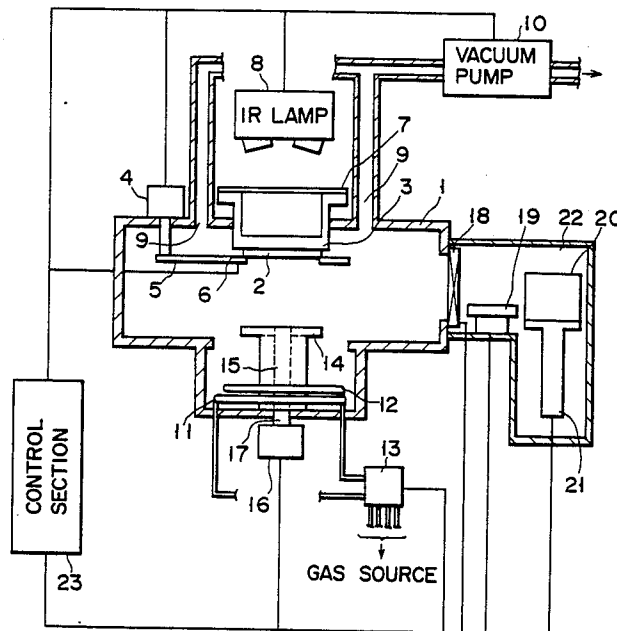
- 60-022635 2/1985 Japan .
- 63-65901 3/1988 Japan .

Primary Examiner—Nam X. Nguyen  
Attorney, Agent, or Firm—Oblon, Spivak, McClelland, Maier & Neustadt

[57] ABSTRACT

A workpiece treating method includes a temperature rise step in which first temperature control is performed and a treatment step in which second temperature control is performed and is adapted to treat a workpiece whose emissivity of infrared rays in the temperature rise step is different from that in the treatment step. In the temperature rise step, the temperature of the workpiece is detected by a non-contact type temperature detecting means so as to perform the first temperature control. In the treatment step, the temperature of the workpiece is detected by a contact type temperature detecting means so as to perform the second temperature control.

7 Claims, 4 Drawing Sheets



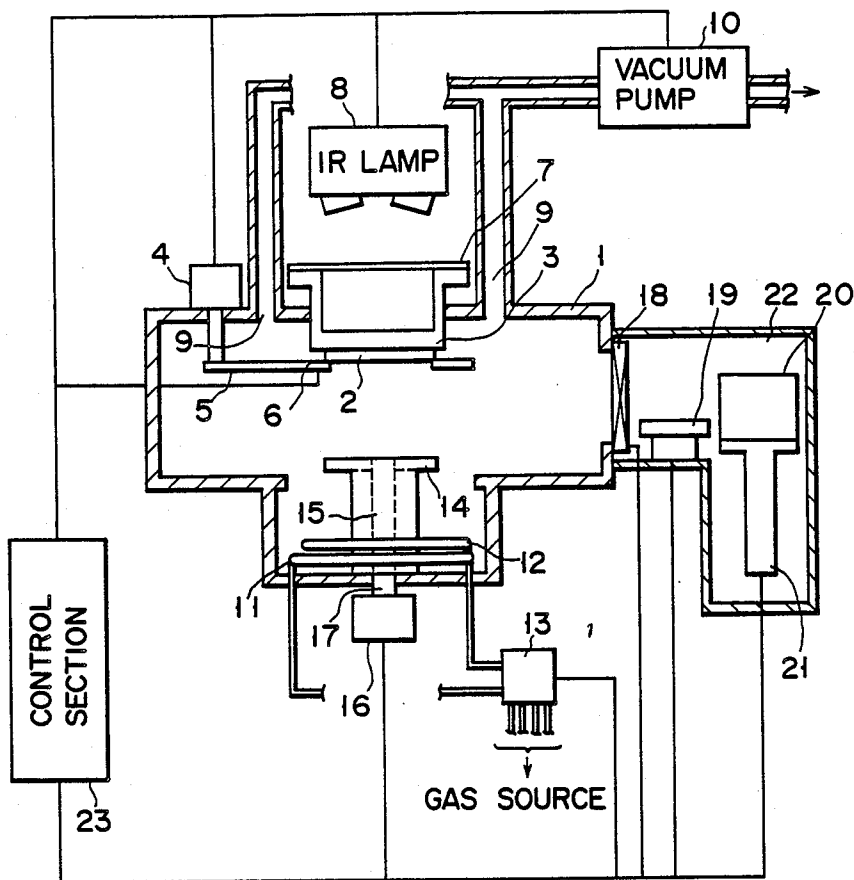


FIG. 1

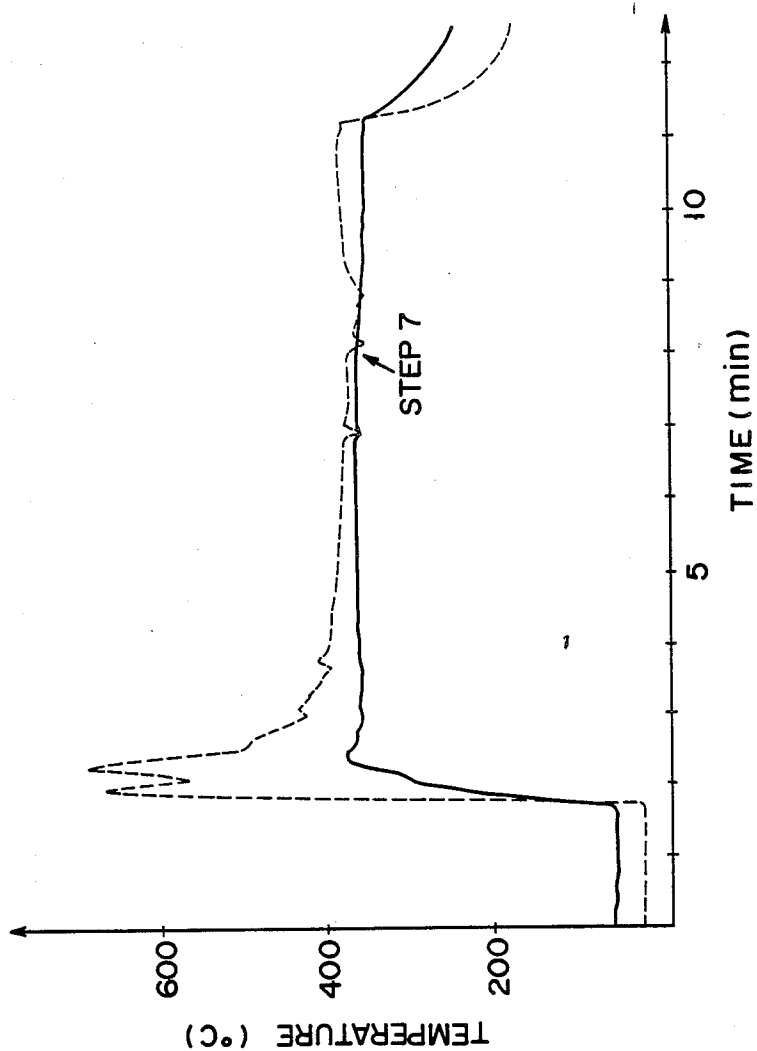


FIG. 2

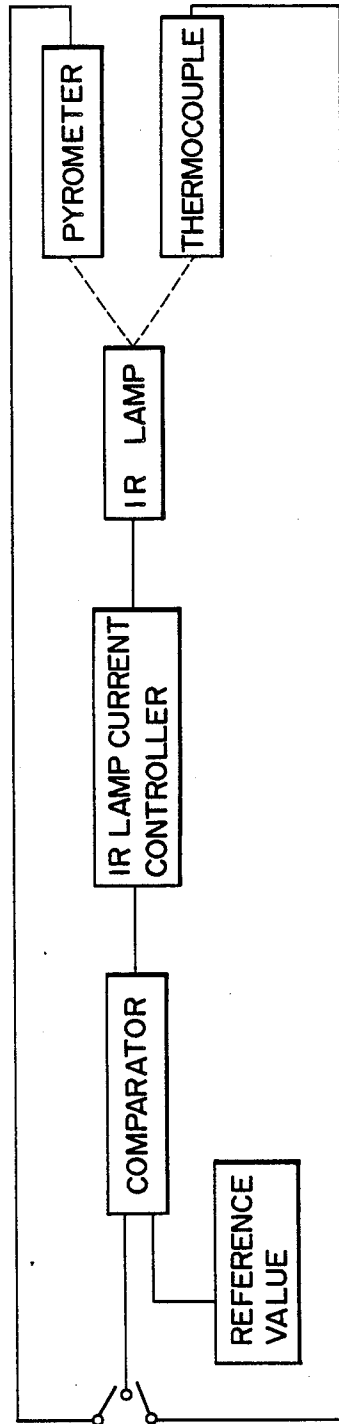


FIG. 3

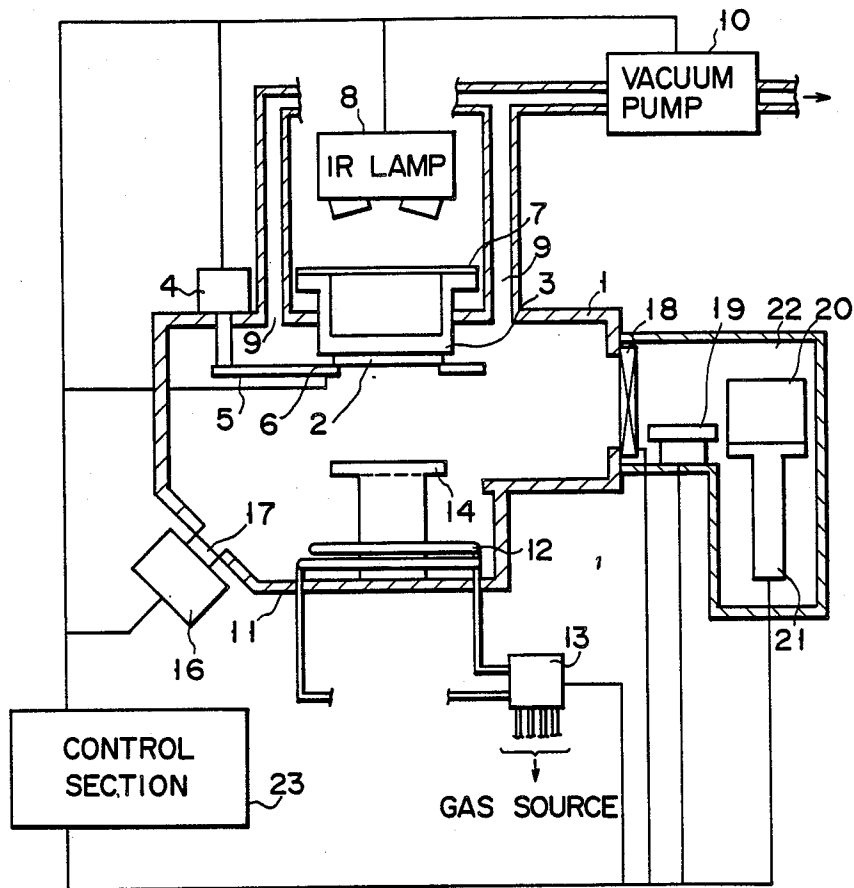


FIG. 4

# Explore Litigation Insights

Docket Alarm provides insights to develop a more informed litigation strategy and the peace of mind of knowing you're on top of things.

## Real-Time Litigation Alerts



Keep your litigation team up-to-date with **real-time alerts** and advanced team management tools built for the enterprise, all while greatly reducing PACER spend.

Our comprehensive service means we can handle Federal, State, and Administrative courts across the country.

## Advanced Docket Research



With over 230 million records, Docket Alarm's cloud-native docket research platform finds what other services can't. Coverage includes Federal, State, plus PTAB, TTAB, ITC and NLRB decisions, all in one place.

Identify arguments that have been successful in the past with full text, pinpoint searching. Link to case law cited within any court document via Fastcase.

## Analytics At Your Fingertips



Learn what happened the last time a particular judge, opposing counsel or company faced cases similar to yours.

Advanced out-of-the-box PTAB and TTAB analytics are always at your fingertips.

## API

Docket Alarm offers a powerful API (application programming interface) to developers that want to integrate case filings into their apps.

## LAW FIRMS

Build custom dashboards for your attorneys and clients with live data direct from the court.

Automate many repetitive legal tasks like conflict checks, document management, and marketing.

## FINANCIAL INSTITUTIONS

Litigation and bankruptcy checks for companies and debtors.

## E-DISCOVERY AND LEGAL VENDORS

Sync your system to PACER to automate legal marketing.