

VAN TRIEU
26X1

#1044.2 103 TC-2600

I hereby certify that this correspondence is being hand delivered to Examining Group 2600 on January 15, 2002.

2632

RECEIVED

JAN 15 2002

Raymond A. Joao
Raymond A. Joao

[Handwritten initials]

1-2450

RJ015

Technology Center 2600

IN THE UNITED STATES PATENT AND TRADEMARK OFFICE

APPLICANT : RAYMOND A. JOAO

SERIAL NO. : 09/277,935

FILED : MARCH 29, 1999

FOR : CONTROL APPARATUS AND METHOD FOR VEHICLES AND/OR FOR PREMISES

EXAMINER : V. TRIEU

GROUP : 2632

Assistant Commissioner For Patents
Washington, D.C. 20231

FOURTH PRELIMINARY AMENDMENT

Sir:

This is a Fourth Preliminary Amendment in the above-identified application. Entry of this Fourth Preliminary Amendment, before any Official Action is taken in this case, is respectfully requested.

01/18/2002 VTOWLER 00000004 09277935

01 FC:203

1044.00 OP

Please amend the above-identified application as follows:

IN THE CLAIMS:

Please cancel Claims 22-27, 29-30, 32-34, 36, 38-40 and 42-45, without prejudice, and please add the following new Claims ¹⁹⁷~~63-204~~ as follows:

Reg 1/15/02

49

~~63~~

48

The apparatus of Claim ~~63~~⁴⁸, wherein the at least one of a vehicle system, a vehicle component, a vehicle device, a vehicle equipment, a vehicle equipment system, and a vehicle appliance, is at least one of a siren, an alarm, a horn, a light system, head lights, tail lights, flashers, a power door lock system, a hood locking system, a mechanical hood locking system, an anti-theft system, a vehicle recovery system or device, a homing device or system, a tracking device or system, video recording equipment, photographing equipment, a video recording device, a camera, a still picture camera, audio recording equipment, an audio recording device, a microphone, a tape recorder, an intercom system or device, a two-way radio, a radio, a television, a navigational device, navigational equipment, fire extinguishing equipment, a radar device, radar equipment,

5

emergency or distress signal equipment, a refrigerator, a stove, an air conditioner, an oven, a microwave oven, a lighting system, an electrical or electronically controlled dead bolt locking device for use on at least one of a door, a window, a hood, and a trunk, a wheel locking device or mechanism, a brake locking device or mechanism, hydraulic equipment, pneumatic equipment, a winch, a loading mechanism, and unloading mechanism, a cutting mechanism, a bailing mechanism, a gun, a weapon system, a self-defense system, an electronic warfare system, and a monitoring device for at least one of reading and monitoring at least one of a fuel supply, a water or coolant supply, an electrical generator or alternator operation, a battery charge level, an engine temperature level, and a vehicle operation.

4

~~48~~ ⁵¹ 64. The apparatus of Claim ~~57~~ ⁴⁸, wherein the at least one of a vehicle system, a vehicle component, a vehicle device, a vehicle equipment, a vehicle equipment system, and a vehicle appliance, is at least one of an ignition system and a fuel pump system.

~~50~~ ⁵⁰ ~~51~~ 65. The apparatus of Claim ~~63~~ ⁴⁹ ~~48~~, wherein the vehicle is at least one of a motor vehicle, an automobile, a truck, a bus, a tractor trailer, construction equipment, farm

equipment, a commercial vehicle, a motorcycle, an unmanned vehicle, a law enforcement vehicle, and a military vehicle.

~~48~~
52

~~48~~
57

66. The apparatus of Claim ~~57~~, wherein the at least one of a vehicle system, a vehicle component, a vehicle device, a vehicle equipment, a vehicle equipment system, and a vehicle appliance, is at least one of a siren, an alarm, a horn, a light system, head lights, tail lights, flashers, a power door or hatch locking system, an electronic or electrical dead bolt locking device, an engine compartment locking device, an electrical or mechanical locking device, an anti-theft system, a recovery system or device, a homing system, a tracking system, a two-way radio, a radio, a television, a navigational device, navigational equipment, fire extinguishing equipment, a pumping device for pumping water, a radar device, radar equipment, emergency or distress signal equipment, a sonar device, sonar equipment, a refrigerator, a stove, an air conditioner, an oven, a microwave oven, a lighting system, video recording equipment, photographing equipment, a video recording device, a camera, a still picture camera, audio recording equipment, an audio recording device, a microphone, a tape recorder, a gun, a weapon system, a self-defense system, an electronic warfare

5

system, and a monitoring device for at least one of reading and monitoring at least one of a fuel supply, a water or coolant supply, an electrical generator or alternator operation, a battery charge level, an engine or motor temperature level, a marine control system, and a boat operation.

53
~~67~~

52
~~66~~

67. The apparatus of Claim ~~66~~, wherein the vehicle is at least one of a boat, a marine vessel, a marine vehicle, a motor boat, a sailboat, a ship, a cruise ship, a commercial boat, a military boat, an unmanned boat, and a submarine.

54
~~68~~

48
~~57~~

68. The apparatus of claim ~~57~~, wherein the at least one of a vehicle system, a vehicle component, a vehicle device, a vehicle equipment, a vehicle equipment system, and a vehicle appliance, is at least one of a siren, an alarm, a horn, a light system, head lights, tail lights, flashers, a power door or hatch locking system or device, a locking system, a mechanical locking system, an anti-theft system, a recovery system or device, a homing system, a tracking system, landing gear, a two-way radio, a radio, a television, a navigational device, navigational equipment, fire extinguishing equipment, a radar device, radar equipment, emergency or distress signal equipment, a sonar

device, sonar equipment, a refrigerator, a stove, an air conditioner, an oven, a microwave oven, a lighting system, video recording equipment, photographing equipment, a video recording device, a camera, a still picture camera, audio recording equipment, an audio recording device, a microphone, a tape recorder, an intercom system or device, a gun, a weapon system, a self-defense system, an electronic warfare system, and a monitoring device for at least one of reading and monitoring at least one of a fuel supply, a water or coolant supply, an electrical generator or alternator operation, a battery charge level, an engine or motor temperature level, an airplane flight control system, and an airplane operation.

55 ~~68~~

54 ~~68~~

69. The apparatus of Claim ~~68~~, wherein the vehicle is at least one of an aircraft, an airplane, a jet, a helicopter, a glider, a spacecraft, a space shuttle, a satellite, an unmanned aircraft, a commercial aircraft, and a military aircraft.

56 ~~68~~

48

70. The apparatus of claim ~~57~~, wherein the at least one of a vehicle system, a vehicle component, a vehicle device, a vehicle equipment, a vehicle equipment system, and a vehicle appliance, is at least one of a siren, an

alarm, a horn, a light system, head lights, tail lights, flashers, a power locking system or device, a steering mechanism locking device, a locking device, a snowmobile track locking device, an anti-theft system, a snowmobile recovery system or device, a homing system, a tracking system, video recording equipment, audio recording equipment, intercom equipment, a gun, a weapon system, a self-defense system, an electronic warfare system, and a monitoring device for at least one of reading and monitoring at least one of a snowmobile fuel supply, a water or coolant supply, an electrical generator or alternator operation, a battery charge level, an engine or motor temperature level, a snowmobile control system, and snowmobile operation.

B

~~57~~
71

~~56~~
~~65~~

71. The apparatus of Claim ~~70~~, wherein the vehicle is at least one of a snowmobile, a jetski, a scooter, a motorcycle, a minibike, a go-cart, a moped, an unmanned vehicle, a commercial vehicle, and a military vehicle.

~~58~~
72

~~48~~

72. The apparatus of Claim ~~57~~, wherein the first control device disables or re-enables the vehicle.

59 ~~68~~
73. The apparatus of Claim ~~51~~⁴⁸, wherein the second control signal contains at least one of an access code, a command code, a disable code, a re-enable code, and a status code.

60 ~~69~~
74. The apparatus of Claim ~~51~~⁴⁸, further comprising:

a positioning device, wherein the positioning device determines a position or location of the vehicle, and further wherein the positioning device further comprises:

a global positioning device; and

5
a database containing at least one of digital map data and digitized map data,

wherein the positioning device is activated by the first control device, and further wherein the positioning device determines the position or location of the vehicle in conjunction with the at least one of digital map data and digitized map data.

61 ~~70~~
75. The apparatus of Claim ~~74~~⁶⁰~~69~~, wherein the positioning device comprises:

a plurality of global positioning devices, wherein the positioning device determines a change in distance between any two or more of the plurality of global positioning devices.

~~62~~
~~71~~
76.

~~60~~
~~61~~
74,

The apparatus of Claim 74, wherein the positioning device performs global positioning calculations at least one of continuously, intermittently, and at regular intervals.

~~63~~
~~72~~
77.

~~48~~
57,

The apparatus of claim 57, wherein the third control device at least one of activates, de-activates, disables, re-enables, controls the operation of, and monitors the operation of, the at least one of a vehicle system, a vehicle component, a vehicle device, a vehicle equipment, a vehicle equipment system, and a vehicle appliance, via the second control device and the first control device.

~~64~~
~~73~~
78.

~~48~~
57,

The apparatus of claim 57, wherein the third control device at least one of activates, de-activates, disables, re-enables, controls the operation of, and monitors the operation of, the at least one of a vehicle system, a

vehicle component, a vehicle device, a vehicle equipment, a vehicle equipment system, and a vehicle appliance, via the second control device and the first control device on or over at least one of the Internet and the World Wide Web.

65
74

48

79. The apparatus of Claim ~~57~~, wherein the first control device controls an operation of the at least one of a vehicle system, a vehicle component, a vehicle device, a vehicle equipment, a vehicle equipment system, and a vehicle appliance.

66
75

48

80. The apparatus of Claim ~~57~~, wherein the first control device monitors an operation of the at least one of a vehicle system, a vehicle component, a vehicle device, a vehicle equipment, a vehicle equipment system, and a vehicle appliance.

67
76

48

81. The apparatus of Claim ~~57~~, wherein the first control device determines an operating status of at least one of the vehicle and the at least one of a vehicle system, a vehicle component, a vehicle device, a vehicle equipment, a vehicle equipment system, and a vehicle appliance.

68
77

48

82. The apparatus of Claim ~~57~~, further comprising:

an interface device for providing an interface between the first control device and the at least one of a vehicle system, a vehicle component, a vehicle device, a vehicle equipment, a vehicle equipment system, and a vehicle appliance.

69 ~~75~~
83. The apparatus of Claim ~~57~~⁴⁸, wherein the first signal is transmitted from the first control device to the at least one of a vehicle system, a vehicle component, a vehicle device, a vehicle equipment, a vehicle equipment system, and a vehicle appliance, via at least one of a wireless device, wireless communication equipment, wireless equipment, and a wireless link.

70 ~~79~~
84. The apparatus of Claim ~~57~~⁴⁸, wherein the apparatus provides at least one of an immediate and a deferred control of the at least one of a vehicle system, a vehicle component, a vehicle device, a vehicle equipment, a vehicle equipment system, and a vehicle appliance.

71 ~~80~~
85. The apparatus of Claim ~~57~~⁴⁸, wherein the apparatus is at least one of programmed, automatically activated, and self-activated.

72 ~~81~~
86.

48
57,

The apparatus of Claim 57, further comprising:

an arming device for at least one of arming, activating, and accessing, the apparatus, wherein the arming device is located at the vehicle.

73 ~~81~~
87.

48
57,

The apparatus of claim 57, wherein the third control device is at least one of a stationary device, a portable device, a hand-held device, a mobile device, a telephone, a cordless telephone, a cellular telephone, a home computer, a personal computer, a personal digital assistant, a television, an interactive television, a digital television, a personal communications device, a personal communications services device, a display telephone, a video telephone, a watch, and a two-way pager.

B

74 ~~81~~
88.

48
57,

The apparatus of Claim 57, further comprising:

a voice synthesizer for providing voice information regarding at least one of apparatus status, vehicle operation status, and status of the at least one of a vehicle system, a vehicle component, a vehicle device, a vehicle equipment, a vehicle equipment system, and a

vehicle appliance, wherein the voice synthesizer is connected to the first control device.

~~75~~ ~~89~~ ~~89~~. The apparatus of Claim ~~57~~ ⁴⁸, wherein the apparatus provides information regarding at least one of apparatus status, vehicle operation status, and status of the at least one of a vehicle system, a vehicle component, a vehicle device, a vehicle equipment, a vehicle equipment system, and a vehicle appliance.

~~76~~ ~~89~~ ~~89~~. The apparatus of Claim ~~57~~ ⁴⁸, wherein the at least one of a vehicle system, a vehicle component, a vehicle device, a vehicle equipment, a vehicle equipment system, and a vehicle appliance, is at least one of a video recording device and a camera, wherein the at least one of a video recording device and a camera obtains video information at the vehicle.

~~80~~ ~~89~~ ~~89~~. The apparatus of Claim ~~57~~ ⁴⁸, wherein the at least one of a vehicle system, a vehicle component, a vehicle device, a vehicle equipment, a vehicle equipment system, and a vehicle appliance, is at least one of an audio recording device, a microphone, and a tape recorder, wherein the at least one of an audio recording device, a

microphone, and a tape recorder, obtains audio information at the vehicle.

~~77~~ ~~84~~ ~~76~~ ~~85~~
92. The apparatus of Claim ~~90~~, wherein the at least one of a video recording device and a camera further comprises:

a storage medium for storing at least one of recorded video and a picture.

~~81~~ ~~90~~ ~~80~~ ~~89~~
93. The apparatus of Claim ~~91~~, wherein the at least one of an audio recording device, a microphone, and a tape recorder, further comprises:

a storage medium for storing recorded audio information.

~~82~~ ~~91~~ ~~48~~
94. The apparatus of Claim ~~57~~, wherein the at least one of a vehicle system, a vehicle component, a vehicle device, a vehicle equipment, a vehicle equipment system, and a vehicle appliance, is at least one of a video recording device, a camera, an audio recording device, a microphone, and a tape recorder, wherein the at least one of a video recording device, a camera, an audio recording

device, a microphone, and a tape recorder, is at least one of pivotable and moveable.

83 ~~92~~

48

95. The apparatus of Claim ~~57~~, wherein the at least one of a vehicle system, a vehicle component, a vehicle device, a vehicle equipment, a vehicle equipment system, and a vehicle appliance, is a monitoring device for at least one of reading and monitoring at least one of a fuel supply, a water or coolant supply, an electrical generator or alternator operation, a battery charge level, an engine temperature level, a vehicle operation, a marine control system, a boat operation, an airplane flight control system, an airplane operation, a snowmobile control system, and a snowmobile operation, wherein the apparatus provides information regarding at least one of data and information at least one of recorded by and read by the monitoring device.

B

84 ~~93~~

48

96. The apparatus of Claim ~~57~~, wherein the at least one of a vehicle system, a vehicle component, a vehicle device, a vehicle equipment, a vehicle equipment system, and a vehicle appliance, is a system for detecting a failure in the at least one of a vehicle system, a vehicle component, a vehicle device, a vehicle equipment, a vehicle

equipment system, and a vehicle appliance, wherein the detecting system provides information regarding the failure.

~~85/94~~

~~48~~

97. The apparatus of Claim ~~57~~, wherein the apparatus is utilized on or over at least one of the Internet and the World Wide Web.

~~86/95~~

~~48~~

98. The apparatus of Claim ~~57~~, wherein the apparatus is programmed to become activated or de-activated automatically upon an occurrence or lack of an occurrence of a pre-defined event, wherein the pre-defined event is at least one of a theft of the vehicle and a malfunction, and further wherein the apparatus is programmed to transmit a message containing information regarding the at least one of a theft of the vehicle and a malfunction to a communication device associated with the vehicle at least one of user, operator, owner, occupant, and authorized individual, and further wherein the message is at least one of a pager message, a facsimile message, a voice message, a voice mail message, an electronic message, and an answering service message.

B

~~87/96~~

~~48~~

99. The apparatus of Claim ~~57~~, wherein the

apparatus performs a systematic check of at least one of a status and a state of the at least one of a vehicle system, a vehicle component, a vehicle device, a vehicle equipment, a vehicle equipment system, and a vehicle appliance, and further wherein the apparatus provides information relating to the at least one of a status and a state of the at least one of a vehicle system, a vehicle component, a vehicle device, a vehicle equipment, a vehicle equipment system, and a vehicle appliance.

88 AT
100.

48
57,

The apparatus of Claim 57, further comprising:

a monitoring device for detecting an occurrence warranting providing notice to at least one of an owner, a user, and an authorized operator, and further wherein the apparatus provides information regarding the occurrence in at least one of a telephone call, a voice message, a pager message, an electronic mail message, and a fax transmission.

89 AT
101.

48
57,

The apparatus of Claim 57, wherein the apparatus defers at least one of a control function, a monitoring function, and a security function, until after an operation of at least one of the at least one of a

vehicle system, a vehicle component, a vehicle device, a vehicle equipment, a vehicle equipment system, and a vehicle appliance, is completed.

79 ~~88~~

76
~~85~~

102. The apparatus of claim 90, wherein the at least one of a video recording device and a camera, is located at least one of on the interior of the vehicle and on the exterior of the vehicle.

78
~~87~~

77
~~86~~

103. The apparatus of claim 92, wherein the at least one of an audio recording device, a microphone, and a tape recorder, is located at least one of on the interior of the vehicle and on the exterior of the vehicle.

5

92
~~101~~

91
~~100~~

104. The apparatus of Claim 58, wherein the first control device is at least one of a server computer, a computer, and a network computer, and wherein the second control device is at least one of a stationary device, a portable device, a hand-held device, a mobile device, a telephone, a cordless telephone, a cellular telephone, a home computer, a personal computer, a personal digital assistant, a television, an interactive television, a digital television, a personal communications device, a personal communications services device, a display telephone, a video

1

telephone, a watch, and a two-way pager, and wherein the apparatus is utilized on or over at least one of the Internet and the World Wide Web.

93
~~105~~

91
~~100~~

105. The apparatus of Claim ~~58~~, wherein the at least one of a vehicle system, a vehicle component, a vehicle device, a vehicle equipment, a vehicle equipment system, and a vehicle appliance, is at least one of a siren, an alarm, a horn, a light system, head lights, tail lights, flashers, a power door lock system, a hood locking system, a mechanical hood locking system, an anti-theft system, a vehicle recovery system or device, a homing device or system, a tracking device or system, video recording equipment, photographing equipment, a video recording device, a camera, a still picture camera, audio recording equipment, an audio recording device, a microphone, a tape recorder, an intercom system or device, a two-way radio, a radio, a television, a navigational device, navigational equipment, fire extinguishing equipment, a radar device, radar equipment, emergency or distress signal equipment, a refrigerator, a stove, an air conditioner, an oven, a microwave oven, a lighting system, an electrical or electronically controlled dead bolt locking device for use on at least one of a door, a window, a hood, and a trunk, a wheel locking device or

B

mechanism, a brake locking device or mechanism, hydraulic equipment, pneumatic equipment, a winch, a loading mechanism, and unloading mechanism, a cutting mechanism, a bailing mechanism, a gun, a weapon system, a self-defense system, an electronic warfare system, and a monitoring device for at least one of reading and monitoring at least one of a fuel supply, a water or coolant supply, an electrical generator or alternator operation, a battery charge level, an engine temperature level, and a vehicle operation, and further wherein the vehicle is at least one of a motor vehicle, an automobile, a truck, a bus, a tractor trailer, construction equipment, farm equipment, a commercial vehicle, a recreational vehicle, a motorcycle, an unmanned vehicle, a law enforcement vehicle, and a military vehicle.

94
~~103~~

91
~~100~~

106. The apparatus of Claim ~~58~~, wherein the at least one of a vehicle system, a vehicle component, a vehicle device, a vehicle equipment, a vehicle equipment system, and a vehicle appliance, is at least one of an ignition system and a fuel pump system.

95
~~104~~

91
~~100~~

107. The apparatus of Claim ~~58~~, wherein the at least one of a vehicle system, a vehicle component, a vehicle device, a vehicle equipment, a vehicle equipment system, and

a vehicle appliance, is at least one of a siren, an alarm, a horn, a light system, head lights, tail lights, flashers, a power door or hatch locking system, an electronic or electrical dead bolt locking device, an engine compartment locking device, an electrical or mechanical locking device, an anti-theft system, a recovery system or device, a homing system, a tracking system, a two-way radio, a radio, a television, a navigational device, navigational equipment, fire extinguishing equipment, a pumping device for pumping water, a radar device, radar equipment, an emergency or distress signal equipment, a sonar device, sonar equipment, a refrigerator, a stove, an air conditioner, an oven, a microwave oven, a lighting system, video recording equipment, photographing equipment, a video recording device, a camera, a still picture camera, audio recording equipment, an audio recording device, a microphone, a tape recorder, a gun, a weapon system, a self-defense system, an electronic warfare system, and a monitoring device for at least one of reading and monitoring at least one of a fuel supply, a water or coolant supply, an electrical generator or alternator operation, a battery charge level, an engine or motor temperature level, a marine control system, and a boat operation, and further wherein the vehicle is at least one of a boat, a marine vessel, a marine vehicle, a motor boat, a

sailboat, a ship, a cruise ship, a commercial boat, a military boat, an unmanned boat, and a submarine.

96
~~105~~

91
~~100~~

108. The apparatus of claim ~~58~~, wherein the at least one of a vehicle system, a vehicle component, a vehicle device, a vehicle equipment, a vehicle equipment system, and a vehicle appliance, is at least one of a siren, an alarm, a horn, a light system, head lights, tail lights, flashers, a power door or hatch locking system or device, a locking system, a mechanical locking system, an anti-theft system, a recovery system or device, a homing system, a tracking system, landing gear, a two-way radio, a radio, a television, a navigational device, navigational equipment, fire extinguishing equipment, a radar device, radar equipment, emergency or distress signal equipment, a sonar device, sonar equipment, a refrigerator, a stove, an air conditioner, an oven, a microwave oven, a lighting system, video recording equipment, photographing equipment, a video recording device, a camera, a still picture camera, audio recording equipment, an audio recording device, a microphone, a tape recorder, an intercom system or device, a gun, a weapon system, a self-defense system, an electronic warfare system, and a monitoring device for at least one of reading and monitoring at least one of a fuel supply, a water or coolant supply, an

A

electrical generator or alternator operation, a battery charge level, an engine or motor temperature level, an airplane flight control system, and an airplane operation, and further wherein the vehicle is at least one of an aircraft, an airplane, a jet, a helicopter, a glider, a spacecraft, a space shuttle, a satellite, an unmanned aircraft, a commercial aircraft, and a military aircraft.

97
~~106~~

91
~~100~~

A

109. The apparatus of claim 58, wherein the at least one of a vehicle system, a vehicle component, a vehicle device, a vehicle equipment, a vehicle equipment system, and a vehicle appliance, is at least one of a siren, an alarm, a horn, a light system, head lights, tail lights, flashers, a power locking system or device, a steering mechanism locking device, a locking device, a snowmobile track locking device, an anti-theft system, a snowmobile recovery system or device, a homing system, a tracking system, video recording equipment, audio recording equipment, intercom equipment, a gun, a weapon system, a self-defense system, an electronic warfare system, and a monitoring device for at least one of reading and monitoring at least one of a snowmobile fuel supply, a water or coolant supply, an electrical generator or alternator operation, a battery charge level, an engine or

motor temperature level, a snowmobile control system, and snowmobile operation, and further wherein the vehicle is at least one of a snowmobile, a jetski, a scooter, a motorcycle, a minibike, a go-cart, a moped, an unmanned vehicle, a commercial vehicle, and a military vehicle.

139
~~148~~

138
~~147~~

~~1~~10. The method of Claim ~~6~~1, further comprising:

determining the position or location of the vehicle.

140
~~149~~

138
~~147~~

~~1~~11. The method of Claim ~~6~~1, further comprising:

at least one of controlling an operation of, monitoring an operation of, an determining an operating status of, the at least one of a vehicle system, a vehicle component, a vehicle device, a vehicle equipment, a vehicle equipment system, and a vehicle appliance.

141
~~150~~

138
~~147~~

~~1~~12. The method of Claim ~~6~~1, further comprising:

at least one of obtaining video information at the vehicle and obtaining audio information at the vehicle.

142
~~151~~

138
~~147~~

~~1~~13. The method of Claim ~~6~~1, further comprising:

at least one of reading and monitoring at least one of a fuel supply, a water or coolant supply, an electrical generator or alternator operation, a battery charge level, an engine temperature level, a vehicle operation, a marine control system, a boat operation, an airplane flight control system, an airplane operation, a snowmobile control system, and a snowmobile operation, with a monitoring device; and

providing information regarding at least one of data and information at least one of recorded and read by the monitoring device.

143
~~152~~

138
~~147~~

114. The method of Claim ~~61~~, further comprising:

detecting a failure in the at least one a vehicle system, a vehicle component, a vehicle device, a vehicle equipment, a vehicle equipment system, and a vehicle appliance; and

providing information regarding the failure.

Ins. 21

26

25

115. The apparatus of Claim 41, wherein the vehicle is at least one of a motor vehicle, an automobile, a truck, a bus, a tractor trailer, construction equipment, farm equipment, a commercial vehicle, a recreational vehicle, a motorcycle, an unmanned vehicle, a law enforcement vehicle, a military vehicle, a boat, a marine vessel, a marine vehicle, a motor boat, a sailboat, a ship, a cruise ship, a commercial boat, a military boat, an unmanned boat, a submarine, an aircraft, an airplane, a jet, a helicopter, a glider, a spacecraft, a space shuttle, a satellite, an unmanned aircraft, a commercial aircraft, a military aircraft, a snowmobile, a jetski, a scooter, a motorcycle, a minibike, a go-cart, and a moped.

5

28

26
25

116. The apparatus of Claim 41, wherein the first control device disables or re-enables the vehicle.

29 28

26
25

117. The apparatus of Claim 41, wherein the apparatus provides at least one of an immediate and a deferred control of the at least one of a vehicle system, a vehicle component, a vehicle device, a vehicle equipment, a vehicle equipment system, and a vehicle appliance.

30
~~29~~

24
~~23~~

118. The apparatus of Claim ~~41~~, wherein the first control device at least one of controls, monitors, and determines an operating status of, the at least one of a vehicle system, a vehicle component, a vehicle device, a vehicle equipment, a vehicle equipment system, and a vehicle appliance.

31
~~30~~

26
~~25~~

119. The apparatus of Claim ~~41~~, wherein the first signal is transmitted from the first control device to the at least one of a vehicle system, a vehicle component, a vehicle device, a vehicle equipment, a vehicle equipment system, and a vehicle appliance, via at least one of a wireless device, wireless communication equipment, wireless equipment, and a wireless link.

5

32
~~31~~

26
~~25~~

120. The apparatus of Claim ~~41~~, further comprising:

an interface device for providing an interface between the first control device and the at least one of a vehicle system, a vehicle component, a vehicle device, a vehicle equipment, a vehicle equipment system, and a vehicle appliance.

33
32

24
25

121. The apparatus of claim ~~41~~, wherein the second control device is at least one of a server computer, a computer, and a network computer, and further wherein the third control device is at least one of a stationary device, a portable device, a hand-held device, a mobile device, a telephone, a cordless telephone, a cellular telephone, a home computer, a personal computer, a personal digital assistant, a television, an interactive television, a digital television, a personal communications device, a personal communications services device, a display telephone, a video telephone, a watch, and a two-way pager.

34
33

25
26

122. The apparatus of Claim ~~41~~, wherein the first control device at least one of activates and controls at least one of the video recording device for obtaining video information at the vehicle, the camera for obtaining video information at the vehicle, the audio recording device for obtaining audio information at the vehicle, and the microphone for obtaining audio information at the vehicle.

✓
K

35
34

25
26

123. The apparatus of Claim ~~41~~, wherein the first control device at least one of activates and controls the monitoring device for at least one of reading and monitoring at least one of a fuel supply, a water or

coolant supply, an electrical generator or alternator operation, a battery charge level, an engine temperature level, a vehicle operation, a marine control system, a boat operation, an airplane flight control system, an airplane operation, a snowmobile control system, and a snowmobile operation.


³⁶
~~35~~
124. The apparatus of Claim ~~41~~, further comprising:

1
H
a system for detecting a failure in the at least one of a vehicle system, a vehicle component, a vehicle device, a vehicle equipment, a vehicle equipment system, and a vehicle appliance, wherein the system provides information regarding the failure, and further wherein the detecting system is at least one of activated, de-activated, disabled, re-enabled, and controlled, by the first control device.

³⁷
~~36~~
125. The apparatus of Claim ~~41~~, wherein the apparatus is programmed to become activated or de-activated automatically upon an occurrence or lack of an occurrence of a pre-defined event, wherein the pre-defined event is at least one of a theft of the vehicle and a malfunction, and further wherein the apparatus is programmed to transmit a

message containing information regarding the at least one of a theft of the vehicle and a malfunction to a communication device associated with the vehicle at least one of user, operator, owner, occupant, and authorized individual, and further wherein the message is at least one of a pager message, a facsimile message, a voice message, a voice mail message, an electronic message, and an answering service message.

~~38~~
~~37~~
126. The apparatus of Claim ~~41~~²⁶, further comprising:

 a monitoring device for detecting an occurrence warranting providing notice to at least one of an owner, a user, and an authorized operator, and further wherein the apparatus provides information regarding the occurrence in at least one of a telephone call, a voice message, a pager message, an electronic mail message, and a fax transmission.

~~39~~
~~38~~
127. The apparatus of Claim ~~41~~²⁶, wherein the apparatus defers at least one of a control function, a monitoring function, and a security function, until after an operation of at least one of the at least one of a vehicle system, a vehicle component, a vehicle device, a

vehicle equipment, a vehicle equipment system, and a vehicle appliance, is completed.

41
~~40~~

40
~~39~~

128. The apparatus of Claim ~~50~~, wherein the first control device is at least one of a server computer, a computer, and a network computer, and further wherein the second control device is at least one of a stationary device, a portable device, a hand-held device, a mobile device, a telephone, a cordless telephone, a cellular telephone, a home computer, a personal computer, a personal digital assistant, a television, an interactive television, a digital television, a personal communications device, a personal communications services device, a display telephone, a video telephone, a watch, and a two-way pager.

6

43
~~52~~

42
~~41~~

129. The method of Claim ~~51~~, further comprising:

at least one of controlling, monitoring, and determining an operating status of, the at least one of a vehicle system, a vehicle component, a vehicle device, a vehicle equipment, a vehicle equipment system, and a vehicle appliance.

53
~~53~~ 44

42
~~41~~

130. The method of Claim ~~51~~, further comprising:

at least one of obtaining video information at the vehicle and obtaining audio information at the vehicle.

45/54

42

131. The method of Claim 51, further comprising:

at least one of reading and monitoring at least one of a fuel supply, a water or coolant supply, an electrical generator or alternator operation, a battery charge level, an engine temperature level, a vehicle operation, a marine control system, a boat operation, an airplane flight control system, an airplane operation, a snowmobile control system, and a snowmobile operation, with a monitoring device; and

5

providing information regarding at least one of data and information at least one of recorded by and read by the monitoring device.

46/55

42

132. The method of Claim 51, further comprising:

detecting a failure in the at least one of a vehicle system, a vehicle component, a vehicle device, a vehicle

equipment, a vehicle equipment system, and a vehicle appliance; and

providing information regarding the failure.

90
~~99~~

48
~~57~~

133. The apparatus of Claim ~~57~~, wherein the first control device generates at least one of a confirmation signal and a notification signal for providing information regarding that at least one of a control, a monitoring, a securing, a disabling, and a re-enabling, function has been carried out and is successful or unsuccessful.

144
~~153~~

138
~~147~~

134. The method of claim ~~61~~, further comprising:

generating at least one of a confirmation signal and a notification signal for providing information regarding that at least one of a control, a monitoring, a securing, a disabling, and a re-enabling, function has been carried out and is successful or unsuccessful.

99
~~108~~

98
~~107~~

135. The apparatus of Claim ~~59~~, wherein the at least one of a premises system, a premises device, a premises equipment, a premises equipment system, and a premises appliance, is at least one of a central electrical system, a

central heating system, a central air conditioning system, a water system, a thermostat or environmental control system, an anti-theft system, a burglary alarm system, a siren, an alarm, an exterior lighting system, an interior lighting system, an electrical or electronically controlled locking device for at least one of a door and a window, an electrical or an electronic dead-bolt locking system or device, an electrical system for controlling an electrical circuit or system at least one of room-by-room, device-by-device, and appliance-by-appliance, a device for at least one of controlling and monitoring at least one of a hot water heater, a garage door opener, a lawn sprinkler system, an electric fence or fencing, an in-ground or above-ground pool at least one of equipment, a filter, and a heater, a home central water valve, an individual room water valve, a home fire detector equipment, a home fire extinguishment equipment, power at least one of door and window at least one of closing, locking, and opening, equipment, a television, a telephone, a telephone answering machine, an alarm system, a VCR, a stove, an oven, a microwave oven, a door bell, a light, a lamp, a blender, a toaster, a personal computer, a word processor, a stereo, a radio, video recording equipment, photographing equipment, a video recording device, a camera, a still picture camera, audio recording equipment, an audio

recording device, a microphone, a tape recorder, an intercom system, a monitoring device for at least one of reading and monitoring at least one of a home fuel supply, a water supply, an electrical generator or alternator operation, a water usage, a heat usage, an air conditioning usage, an electricity usage, a gas usage, an oil usage, and a fuel usage, at least one of a telephone usage and charges, an appliance usage, and a home control system.

A

~~100~~
~~109~~

~~108~~ 99

136. The apparatus of Claim ~~135~~, wherein the premises is at least one of a residential premises, a residential building, and a home.

~~101~~
~~110~~

~~109~~ 98

137. The apparatus of Claim ~~59~~, wherein the at least one of a premises system, a premises device, a premises equipment, a premises equipment system, and a premises appliance, is a device for controlling an electrical circuit controlled by at least one of a fuse and a circuit breaker.

~~102~~
~~111~~

~~109~~ 98

138. The apparatus of Claim ~~59~~, wherein the at least one of a premises system, a premises device, a premises equipment, a premises equipment system, and a premises appliance, is at least one of a central electrical system,

a central heating system, a central air conditioning system, a water system, a thermostat system, an anti-theft system, a burglary alarm system, a siren, an alarm, an exterior lighting system, an interior lighting system, an electrical or an electronically controlled locking device for at least one of a door and a window, an electric or an electronic dead-bolt locking device or system, an electrical system for controlling an electrical circuit at least one of room-by-room, device-by-device, and appliance-by-appliance, a device for at least one of controlling and monitoring at least one of a hot water heater, a garage door opener, a lawn sprinkler system, an electric fence or fencing, an in-ground or above-ground pool at least one of equipment, fountain equipment, a filter, and a heater, fire detector equipment, fire extinguishment equipment, a power at least one of door and window at least one of closing, locking, and opening, equipment, a television, a telephone, a telephone answering machine, an alarm system, a VCR, a stove, an oven, a microwave oven, a door bell, a light, a lamp, a blender, a toaster, a computer, a peripheral, a word processor, a stereo, a radio, manufacturing equipment, video recording equipment, photographing equipment, a video recording device, a camera, a still picture camera, audio recording

5

equipment, an audio recording device, a microphone, a tape recorder, an intercom system, a monitoring device for at least one of reading and monitoring, at least one of a premises fuel supply, a water supply, an electrical generator or alternator operation, a water usage, at least one of a heat usage and an air conditioning usage, an electricity usage, at least one of a gas usage, an oil usage, and a fuel usage, at least one of a telephone usage and charges, a commercial premises equipment usage, a commercial premises appliance usage, and a commercial office or commercial premises control system.

A

~~103~~
~~112~~
139.

~~102~~
~~111~~

The apparatus of Claim ~~138~~, wherein the premises is at least one of a commercial premises, a commercial office, and a commercial building.

~~104~~
~~113~~

~~98~~
~~107~~

140. The apparatus of Claim ~~59~~, wherein the premises is at least one of a mobile home and a mobile premises.

~~106~~
~~115~~

~~98~~
~~107~~

141. The apparatus of Claim ~~59~~, wherein the first control device disables or re-enables the premises.

~~107~~
~~116~~

~~98~~
~~107~~

142. The apparatus of Claim ~~59~~, wherein the second control signal contains at least one of an access code, a

command code, a disable code, a re-enable code, and a status code.

105
~~114~~

104
~~113~~

~~143~~. The apparatus of Claim ~~140~~, further comprising:

a positioning device, wherein the positioning device determines a position or location of the premises, and further wherein the positioning device is activated by the first control device.

108
~~119~~

98
~~107~~

~~144~~. The apparatus of Claim ~~59~~, wherein the first control device controls an operation of the at least one of a premises system, a premises device, a premises equipment, a premises equipment system, and a premises appliance.

5

109
~~118~~

98
~~107~~

~~145~~. The apparatus of Claim ~~59~~, wherein the first control device monitors an operation of the at least one of a premises system, a premises device, a premises equipment, a premises equipment system, and a premises appliance.

110
~~119~~

98
~~107~~

~~146~~. The apparatus of Claim ~~59~~, wherein the first

control device determines an operating status of the at least one of a premises system, a premises device, a premises equipment, a premises equipment system, and a premises appliance.

111
~~120~~

98
~~107~~

147. The apparatus of Claim ~~59~~, further comprising:

an interface device for providing an interface between the first control device and the at least one of a premises system, a premises device, a premises equipment, a premises equipment system, and a premises appliance.

S

112
~~121~~

98
~~107~~

148. The apparatus of Claim ~~59~~, wherein the first signal is transmitted from the first control device to the at least one of premises system, a premises device, a premises equipment, a premises equipment system, and a premises appliance, via a wireless device.

113
~~122~~

98
~~107~~

149. The apparatus of Claim ~~59~~, wherein the apparatus provides at least one of an immediate and a deferred control of the at least one of a premises system, a premises device, a premises equipment, a premises equipment system, and a premises appliance.

114
~~123~~

98
~~107~~

150. The apparatus of Claim ~~89~~, wherein the apparatus is at least one of programmed, automatically activated, and self-activated.

115
~~124~~

98
~~107~~

151. The apparatus of Claim ~~58~~, further comprising:

an arming device for at least one of arming, activating and accessing, the apparatus, wherein the arming device is located at the premises.

116
~~125~~

98
~~107~~



152. The apparatus of claim ~~89~~, wherein the second control device is at least one of a server computer, a computer, and a network computer, wherein the third control device is at least one of a stationary device, a portable device, a hand-held device, a mobile device, a telephone, a cordless telephone, a cellular telephone, a home computer, a personal computer, a personal digital assistant, a television, an interactive television, a digital television, a personal communications device, a personal communications services device, a display telephone, a video telephone, a watch, and a two-way pager, and further wherein the apparatus is utilized on or over at least one of the Internet and the World Wide Web.

117
~~124~~

98
~~107~~

153. The apparatus of Claim ~~58~~, further comprising:

a voice synthesizer for providing voice information regarding at least one of apparatus status and status of the at least one of a premises system, a premises device, a premises equipment, a premises equipment system, and a premises appliance, wherein the voice synthesizer is connected to the first control device.

118
~~124~~

98
~~107~~

154. The apparatus of Claim ~~58~~, wherein the

apparatus provides information regarding at least one of apparatus status and status of the at least one of a premises system, a premises device, a premises equipment, a premises equipment system, and a premises appliance.

A

119
~~128~~

98
~~107~~

155. The apparatus of Claim ~~58~~, wherein the at

least one of a premises system, a premises device, a premises equipment, a premises equipment system, and a premises appliance, is at least one of a video recording device and a camera for obtaining video information at the premises.

121
~~130~~

98
~~107~~

156. The apparatus of Claim ~~58~~, wherein the at

least one of a premises system, a premises device, a premises equipment, a premises equipment system, and a premises appliance, is at least one of an audio recording device, a microphone, and a tape recorder, for obtaining audio information at the premises.

124
~~133~~

119
~~128~~

157. The apparatus of Claim ~~155~~, wherein the at least one of a video recording device and a camera further comprises:

a storage medium for storing at least one of recorded video and a picture.

122
~~131~~

121
~~130~~

158. The apparatus of Claim ~~156~~, wherein the at least one of an audio recording device, a microphone, and a tape recorder, further comprises:

a storage medium for storing recorded audio information.

125
~~134~~

98
~~107~~

159. The apparatus of Claim ~~59~~, wherein the at least one of a premises system, a premises device, a premises equipment, a premises equipment system, and a premises appliance, is at least one of a video recording

device, a camera, an audio recording device, a microphone, and a tape recorder, wherein the at least one of a video recording device, a camera, an audio recording device, a microphone, and a tape recorder, is at least one of pivotable and moveable.

126
~~135~~
160.

98
~~107~~
59,

The apparatus of Claim 59, wherein the at least one of a premises system, a premises device, a premises equipment, a premises equipment system, and a premises appliance, is a monitoring device for at least one of reading and monitoring at least one of a home fuel supply, a commercial premises fuel supply, a water supply, an electrical generator or alternator operation, a water usage, at least one of a heat usage and an air conditioning usage, an electricity usage, at least one of a gas usage, an oil usage, and a fuel usage, at least one of a telephone usage and charges, an appliance usage, a commercial premises equipment usage, a commercial premises appliance usage, and a commercial office or a commercial premises control system, wherein the apparatus provides information regarding at least one of data and information at least one of recorded by and read by the monitoring device.

127
~~136~~

98
~~107~~

161. The apparatus of claim ~~59~~, wherein the third control device at least one of activates, de-activates, disables, re-enables, controls the operation of, and monitors the operation of, the at least one of a premises system, a premises device, a premises equipment, a premises equipment system, and a premises appliance, via the second control device and the first control device.

128
~~137~~

98
~~107~~

162. The apparatus of Claim ~~59~~, wherein the apparatus performs a systematic check of at least one of a status and a state of the at least one of a premises system, a premises device, a premises equipment, a premises equipment system, and a premises appliance, and further wherein the apparatus provides information relating to the at least one of a status and a state of the at least one of a premises system, a premises device, a premises equipment, a premises equipment system, and a premises appliance.

B

129
~~138~~

98
~~107~~

163. The apparatus of Claim ~~59~~, further comprising:

a monitoring device for detecting an occurrence warranting providing notice to at least one of an owner, a user, and an authorized operator, and further wherein the apparatus provides information regarding the occurrence in

at least one of a telephone call, a voice message, a pager message, an electronic mail message, and a fax transmission.

130
~~139~~
164.

98
~~107~~

The apparatus of Claim 59, wherein the apparatus defers at least one of a control function, a monitoring function, and a security function, until after an operation of at least one of the at least one of a premises system, a premises device, a premises equipment, a premises equipment system, and a premises appliance, is completed.

B

131
~~140~~
165.

98
~~107~~

The apparatus of claim 59, wherein the third control device at least one of activates, de-activates, disables, re-enables, controls the operation of, and monitors the operation of, the at least one of a premises system, a premises device, a premises equipment, a premises equipment system, and a premises appliance, via the second control device and the first control device on or over at least one of the Internet and the World Wide Web.

132
~~141~~
166.

98
~~107~~

The apparatus of Claim 59, wherein the first control device generates at least one of a confirmation signal and a notification signal for providing information

regarding that at least one of a control, a monitoring, a securing, a disabling, and a re-enabling, function has been carried out and is successful or unsuccessful.

120
~~119~~

119
~~128~~

167. The apparatus of claim ~~155~~, wherein the at least one of a video recording device and a camera is located at least one of on the interior of the premises and on the exterior of the premises.

123
~~132~~

121
~~130~~

188. The apparatus of claim ~~156~~, wherein the at least one of an audio recording device, a microphone, and a tape recorder, is located at least one of on the interior of the premises and on the exterior of the premises.

134
~~143~~

133
~~142~~

189. The apparatus of Claim ~~50~~, wherein the first control device is at least one of a server computer, a computer, and a network computer, wherein the second control device is at least one of a stationary device, a portable device, a hand-held device, a mobile device, a telephone, a cordless telephone, a cellular telephone, a home computer, a personal computer, a personal digital assistant, a television, an interactive television, a digital television, a personal communications device, a

personal communications services device, a display telephone, a video telephone, a watch, and a two-way pager, wherein the apparatus is utilized on or over at least one of the Internet and the World Wide Web.

135
~~144~~

133
~~144~~

110. The apparatus of Claim ~~60~~, wherein the at least one of a premises system, a premises device, a premises equipment, a premises equipment system, and a premises appliance, is at least one of a central electrical system, a central heating system, a central air conditioning system, a water system, a thermostat or environmental control system, an anti-theft system, a burglary alarm system, a siren, an alarm, an exterior lighting system, an interior lighting system, an electrical or electronically controlled locking device for at least one of a door and a window, an electrical or an electronic dead-bolt locking system or device, an electrical system for controlling an electrical circuit or system at least one of room-by-room, device-by-device, and appliance-by-appliance, a device for at least one of controlling and monitoring at least one of a hot water heater, a garage door opener, a lawn sprinkler system, an electric fence or fencing, an in-ground or above-ground pool at least one of equipment, a filter, and a heater, a home central water valve, an individual room water valve, a home

5

fire detector equipment, a home fire extinguishment equipment, power at least one of door and window at least one of closing, locking, and opening, equipment, a television, a telephone, a telephone answering machine, an alarm system, a VCR, a stove, an oven, a microwave oven, a door bell, a light, a lamp, a blender, a toaster, a personal computer, a word processor, a stereo, a radio, video recording equipment, photographing equipment, a video recording device, a camera, a still picture camera, audio recording equipment, an audio recording device, a microphone, a tape recorder, an intercom system, a monitoring device for at least one of reading and monitoring at least one of a home fuel supply, a water supply, an electrical generator or alternator operation, a water usage, at least one of a heat usage and an air conditioning usage, an electricity usage, at least one of a gas usage, an oil usage, and a fuel usage, at least one of a telephone usage and charges, an appliance usage, and a home control system, and further wherein the premises is at least one of a residential premises, a residential building, and a home.

137
~~146~~

133
~~142~~

~~171~~. The apparatus of Claim ~~60~~, wherein the at least one of a premises system, a premises device, a premises equipment, a premises equipment system, and a premises

appliance, is at least one of a central electrical system, a central heating system, a central air conditioning system, a water system, a thermostat system, an anti-theft system, a burglary alarm system, a siren, an alarm, an exterior lighting system, an interior lighting system, an electrical or an electronically controlled locking device for at least one of a door and a window, an electric or an electronic dead-bolt locking device or system, an electrical system for controlling an electrical circuit at least one of room-by-room, device-by-device, and appliance-by-appliance, a device for at least one of controlling and monitoring at least one of a hot water heater, a garage door opener, a lawn sprinkler system, an electric fence or fencing, an in-ground or above-ground pool at last one of equipment, fountain equipment, a filter, and a heater, fire detector equipment, fire extinguishment equipment, a power at least one of door and window at least one of closing, locking, and opening, equipment, a television, a telephone, a telephone answering machine, an alarm system, a VCR, a stove, an oven, a microwave oven, a door bell, a light, a lamp, a blender, a toaster, a computer, a peripheral, a word processor, a stereo, a radio, manufacturing equipment, video recording equipment, photographing equipment, a video recording

device, a camera, a still picture camera, audio recording equipment, an audio recording device, a microphone, a tape recorder, an intercom system, a monitoring device for at least one of reading and monitoring at least one of a premises fuel supply, a water supply, an electrical generator or alternator operation, a water usage, at least one of a heat usage and an air conditioning usage, an electricity usage, at least one of a gas usage, an oil usage, and a fuel usage, at least one of a telephone usage and charges, a commercial premises equipment usage, a commercial premises appliance usage, and a commercial office or commercial premises control system, and further the premises is at least one of a commercial premises, a commercial office, and a commercial building.

136
~~140~~

135
~~144~~

112. The apparatus of Claim 170, wherein the premises is at least one of a mobile home and a mobile premises.

146
~~155~~

145
~~154~~

173. The method of Claim 62, further comprising:

determining the position or location of the premises.

147
~~156~~

145
~~154~~

174. The method of Claim 62, further comprising:

at least one of controlling an operation of, monitoring an operation of, and determining an operating status of, the at least one of a premises system, a premises device, a premises equipment, a premises equipment system, and a premises appliance.

148
~~157~~

145
~~154~~

175. The method of Claim ~~62~~, further comprising:

at least one of obtaining video information at the premises and obtaining audio information at the premises.

149
~~158~~

145
~~154~~

176. The method of Claim ~~62~~, further comprising:

at least one of reading and monitoring at least one of a home fuel supply, a commercial premises fuel supply, a water supply, an electrical generator or alternator operation, a water usage, a heat usage, an air conditioning usage, an electricity usage, a gas usage, an oil usage, a fuel usage, at least one of a telephone usage and charges, an appliance usage, a commercial premises equipment usage, a commercial premises appliance usage, a home control system,

and a commercial office or commercial premises control system, with a monitoring device, and

providing information regarding at least one of data and information at least one of recorded by and read by the monitoring device.

2 1
177. The apparatus of Claim ~~21~~, wherein the at least one of a premises system, a premises device, a premises equipment, a premises equipment system, and a premises appliance, is at least one of a central electrical system, a central heating system, a central air conditioning system, a water system, a thermostat or environmental control system, an anti-theft system, a burglary alarm system, a siren, an alarm, an exterior lighting system, an interior lighting system, an electrical or electronically controlled locking device for at least one of a door and a window, an electrical or an electronic dead-bolt locking system or device, an electrical system for controlling an electrical circuit or system at least one of room-by-room, device-by-device, and appliance-by-appliance, a device for at least one of controlling and monitoring at least one of a hot water heater, a garage door opener, a lawn sprinkler system, an electric fence or fencing, an in-ground or above-ground pool

at least one of equipment, a filter, and a heater, a home central water valve, an individual room water valve, a home fire detector equipment, a home fire extinguishment equipment, power at least one of door and window at least one of closing, locking, and opening, equipment, a television, a telephone, a telephone answering machine, an alarm system, a VCR, a stove, an oven, a microwave oven, a door bell, a light, a lamp, a blender, a toaster, a personal computer, a word processor, a stereo, a radio, video recording equipment, photographing equipment, a video recording device, a camera, a still picture camera, audio recording equipment, an audio recording device, a microphone, a tape recorder, an intercom system, a monitoring device for at least one of reading and monitoring at least one of a home fuel supply, a water supply, an electrical generator or alternator operation, a water usage, at least one of a heat usage and an air conditioning usage, an electricity usage, at least one of a gas usage, an oil usage, and a fuel usage, at least one of a telephone usage and charges, an appliance usage, and a home control system, and wherein the premises is at least one of a residential premises, a residential building, and a home.

5
~~178~~³. The apparatus of Claim ~~21~~¹, wherein the at

least one of a premises system, a premises device, a premises equipment, a premises equipment system, and a premises appliance, is a device for controlling an electrical circuit controlled by at least one of a fuse and a circuit breaker.

⁴
179. The apparatus of Claim ¹~~21~~, wherein the at least one of a premises system, a premises device, a premises equipment, a premises equipment system, and a premises appliance, is at least one of a central electrical system, a central heating system, a central air conditioning system, a water system, a thermostat system, an anti-theft system, a burglary alarm system, a siren, an alarm, an exterior lighting system, an interior lighting system, an electrical or an electronically controlled locking device for at least one of a door and a window, an electric or an electronic dead-bolt locking device or system, an electrical system for controlling an electrical circuit at least one of room-by-room, device-by-device, and appliance-by-appliance, a device for at least one of controlling and monitoring at least one of a hot water heater, a garage door opener, a lawn sprinkler system, an electric fence or fencing, an in-ground or above-ground pool at last one of equipment, fountain equipment, a

filter, and a heater, fire detector equipment, fire extinguishment equipment, a power at least one of door and window at least one of closing, locking, and opening, equipment, a television, a telephone, a telephone answering machine, an alarm system, a VCR, a stove, an oven, a microwave oven, a door bell, a light, a lamp, a blender, a toaster, a computer, a peripheral, a word processor, a stereo, a radio, manufacturing equipment, video recording equipment, photographing equipment, a video recording device, a camera, a still picture camera, audio recording equipment, an audio recording device, a microphone, a tape recorder, an intercom system, a monitoring device for at least one of reading and monitoring a premises fuel supply, a water supply, an electrical generator or alternator operation, a water usage, at least one of a heat usage and an air conditioning usage, an electricity usage, at least one of a gas usage, an oil usage, and a fuel usage, at least one of a telephone usage and charges, a commercial premises equipment usage, a commercial premises appliance usage, and a commercial office or commercial premises control system, and wherein the premises is at least one of a commercial premises, a commercial office, and a commercial building.

⁵
~~180~~. The apparatus of Claim ~~21~~¹, wherein the premises is at least one of a mobile home and a mobile premises, and further wherein the apparatus further comprises:

a positioning device, wherein the positioning device determines a position or location of the premises, and further wherein the positioning device is activated by the first control device.

⁶
~~181~~. The apparatus of Claim ~~21~~¹, wherein the first control device disables or re-enables the premises.

⁷
~~182~~. The apparatus of Claim ~~21~~¹, wherein the first control device at least one of controls an operation of, monitors an operation of, and determines an operating status of, the at least one of a premises system, a premises device, a premises equipment, a premises equipment system, and a premises appliance.

⁸
~~183~~. The apparatus of Claim ~~21~~¹, wherein the first signal is transmitted from the first control device to the at least one of premises system, a premises device, a

premises equipment, a premises equipment system, and a premises appliance, via a wireless device.

⁹
~~184~~. The apparatus of Claim ~~21~~¹, wherein the apparatus provides information regarding at least one of apparatus status and status of the at least one of a premises system, a premises device, a premises equipment, a premises equipment system, and a premises appliance.

5
¹⁰
~~185~~. The apparatus of Claim ~~21~~¹, wherein the at least one of a premises system, a premises device, a premises equipment, a premises equipment system, and a premises appliance, is at least one of a video recording device and a camera for obtaining video information at the premises.

¹¹
~~186~~. The apparatus of Claim ~~21~~¹, wherein the at least one of a premises system, a premises device, a premises equipment, a premises equipment system, and a premises appliance, is at least one of an audio recording device, a microphone, and a tape recorder, for obtaining audio information at the premises.

¹²
~~187~~. The apparatus of Claim ~~21~~¹, wherein the at

least one of a premises system, a premises device, a premises equipment, a premises equipment system, and a premises appliance, is a monitoring device for at least one of reading and monitoring at least one of a home fuel supply, a commercial premises fuel supply, a water supply, an electrical generator or alternator operation, a water usage, a heat usage, an air conditioning usage, an electricity usage, a gas usage, an oil usage, a fuel usage, at least one of a telephone usage and charges, an appliance usage, a commercial premises equipment usage, a commercial premises appliance usage, a home control system, and a commercial office or a commercial premises control system, wherein the apparatus provides information regarding at least one of data and information at least one of recorded by and read by the monitoring device.

¹³
~~128~~. The apparatus of claim ¹~~21~~, wherein the third control device at least one of activates, de-activates, disables, re-enables, controls the operation of, and monitors the operation of, the at least one of a premises system, a premises device, a premises equipment, a premises equipment system, and a premises appliance, via the second control device and the first control device on or over at least one of the Internet and the World Wide Web.

¹⁴
~~189~~. The apparatus of Claim ~~21~~¹, wherein the apparatus performs a systematic check of at least one of a status and a state of the at least one of a premises system, a premises device, a premises equipment, a premises equipment system, and a premises appliance, and further wherein the apparatus provides information relating to the at least one of a status and a state of the at least one of a premises system, a premises device, a premises equipment, a premises equipment system, and a premises appliance.

¹⁵
~~190~~. The apparatus of Claim ~~21~~¹, further comprising:

5
a monitoring device for detecting an occurrence warranting providing notice to at least one of an owner, a user, and an authorized operator, and further wherein the apparatus provides information regarding the occurrence in at least one of a telephone call, a voice message, a pager message, an electronic mail message, and a fax transmission.

¹⁶
~~191~~. The apparatus of Claim ~~21~~¹, wherein the apparatus defers at least one of a control function, a monitoring function, and a security function, until after

an operation of at least one of the at least one of a premises system, a premises device, a premises equipment, a premises equipment system, and a premises appliance, is completed.

19
18
~~19~~2. The apparatus of Claim ~~31~~¹⁸, wherein the first control device is at least one of a server computer, a computer, and a network computer, wherein the second control device is at least one of a stationary device, a portable device, a hand-held device, a mobile device, a telephone, a cordless telephone, a cellular telephone, a home computer, a personal computer, a personal digital assistant, a television, an interactive television, a digital television, a personal communications device, a personal communications services device, a display telephone, a video telephone, a watch, and a two-way pager, and wherein the apparatus is utilized on or over at least one of the Internet and the World Wide Web.

22
21
~~19~~3. The method of Claim ~~31~~²¹₂₀, further comprising:

at least one of controlling an operation of, monitoring an operation of, and determining an operating status of, the at least one of a premises system, a premises

device, a premises equipment, a premises equipment system, and a premises appliance.

23/22

21/20

194. The method of Claim 37, further comprising:

at least one of obtaining video information at the premises and obtaining audio information at the premises.

24/23

21/20

195. The method of Claim 37, further comprising:

at least one of reading and monitoring at least one of a home fuel supply, a commercial premises fuel supply, a water supply, an electrical generator or alternator operation, a water usage, a heat usage, an air conditioning usage, an electricity usage, a gas usage, an oil usage, a fuel usage, at least one of a telephone usage and charges, an appliance usage, a commercial premises equipment usage, a commercial premises appliance usage, a home control system, and a commercial office or commercial premises control system, with a monitoring device; and

1
7

providing information regarding at least one of data and information at least one of recorded by and read by the monitoring device.

¹⁷
~~196~~. The apparatus of Claim ~~21~~¹, wherein the first control device generates at least one of a confirmation signal and a notification signal for providing information regarding that at least one of a control, a monitoring, a securing, a disabling, and a re-enabling, function has been carried out and is successful or unsuccessful.

²⁵
~~24~~
²¹
~~20~~
197. The method of claim ~~31~~³¹, further comprising:

generating at least one of a confirmation signal and a notification signal for providing information regarding that at least one of a control, a monitoring, a securing, a disabling, and a re-enabling, function has been carried out and is successful or unsuccessful. --

IN THE SPECIFICATION:

Please replace the paragraph starting at page 142, line 16 with the following paragraph:

The commercial office and/or premises equipment system(s) 1615 may include a commercial office and/or premises anti-theft and/or burglary alarm system, loud siren or alarm, which may be located in the interior of the commercial office and/or premises, which may produce a loud piercing sound so as to make it unbearable for an intruder to remain inside the commercial office and/or premises, an exterior siren or alarm, which may produce a loud piercing sound, which may be utilized to draw attention to the commercial office and/or premises and exterior lighting system(s) and/or interior lighting system(s), which lighting systems may be turned on or turned off at the user's or operator's discretion and which may be controlled to blink on and off to draw attention to the commercial office and/or premises.

AS

MARKED-UP VERSION OF AMENDED PARAGRAPH STARTING ON PAGE 142, LINE 16:

The commercial office and/or premises equipment system(s) 1615 may include a commercial office and/or premises anti-theft and/or burglary alarm system, loud siren or alarm, which may be located in the interior of the [home] commercial office and/or premises, which may produce a loud piercing sound so as to make it unbearable for an intruder to remain inside the [home] commercial office and/or premises, an exterior siren or alarm, which may produce a loud piercing

sound, which may be utilized to draw attention to the commercial office and/or premises and exterior lighting system(s) and/or [the] interior lighting system(s), which lighting systems may be turned on or turned off at the user's or operator's discretion and which may be controlled to blink on and off to draw attention to the commercial office and/or premises.

REMARKS

This is a Fourth Preliminary Amendment in the above-identified application. Entry of this Fourth Preliminary Amendment, before any Official Action is taken in this case is respectfully requested.

By this Fourth Preliminary Amendment, Applicant has cancelled Claims 22-27, 29-30, 32-34, 36, 38-40 and 42-45, without prejudice, and Applicant has added new dependent Claims 63-197.

Applicant has also amended the Specification at page 142, lines 16-27 so as to correct inadvertent errors contained therein. In particular, Applicant amended the paragraph starting on page 142, line 16 so as to replace "home" with -- commercial office and/or premises --, as shown, in order to correct an inadvertent error. Applicant also deleted the "the" before "interior lighting system(s)", as shown, in order to correct an inadvertent error.

Applicant respectfully submits that the above amendments to the Specification contain no new matter.

Applicant further respectfully submits that the above amendments to the Specification were not made for reasons relating to patentability. Entry of the above amendments to the Specification is respectfully requested.

Applicant respectfully submits that the newly added Claims 63-197 contain no new matter.

Regarding Claim 63, Applicant respectfully submits that support for the subject matter of Claim 63 can, for example, be found at page 46, line 28 to page 52, line 21.

Regarding Claim 64, Applicant respectfully submits that support for the subject matter of Claim 64 can, for example, be found at page 45, line 15 to page 46, line 27.

Regarding Claim 65, Applicant respectfully submits that support for the subject matter of Claim 65 can, for example, be found at page 38, line 20 to page 39, line 1.

Regarding Claim 66, Applicant respectfully submits that support for the subject matter of Claim 66 can, for example, be found at page 108, line 1 to page 112, line 23.

Regarding Claim 67, Applicant respectfully submits that support for the subject matter of Claim 67 can, for example, be found at page 106, lines 6-14 and page 113, line 28 to page 114, line 7.

Regarding Claim 68, Applicant respectfully submits that support for the subject matter of Claim 68 can, for example, be found at page 116, line 1 to page 120, line 24.

Regarding Claim 69, Applicant respectfully submits that support for the subject matter of Claim 69 can, for example, be found at page 114, lines 8-12 and page 121, line 27 to page 22, line 6.

Regarding Claim 70, Applicant respectfully submits that support for the subject matter of Claim 70 can, for example, be found at page 124, line 1 to page 126, line 12.

Regarding Claim 71, Applicant respectfully submits that support for the subject matter of Claim 71 can, for example, be found at page 122, lines 7-9 and page 127, lines 15-25.

Regarding Claims 72 and 116, Applicant respectfully submits that support for the subject matter of Claims 72 and 116 can, for example, be found at page 70, line 16 and page 75, line 10.

Regarding Claim 73, Applicant respectfully submits that support for the subject matter of Claim 73 can, for example, be found at page 67, lines 4-29.

Regarding Claim 74, Applicant respectfully submits that support for the subject matter of Claim 74 can, for example, be found at page 52, line 22 to page 56, line 1.

Regarding Claim 75, Applicant respectfully submits that support for the subject matter of Claim 75 can, for example, be found at page 94, line 13 to page 95, line 18.

Regarding Claim 76, Applicant respectfully submits that support for the subject matter of Claim 76 can, for example, be found at page 56, lines 1-5.

Regarding Claims 77 and 78, Applicant respectfully submits that support for the subject matter of Claims 77

and 78 can, for example, be found at page 59, line 23 to page 61, line 22.

Regarding Claims 79 and 80, Applicant respectfully submits that support for the subject matter of Claims 79 and 80 can, for example, be found at page 152, line 26 to page 153, line 14; page 94, lines 4-12, page 99, lines 18-22; page 150, lines 5-19; and originally filed claim 1.

Regarding Claim 81, Applicant respectfully submits that support for the subject matter of Claim 81 can, for example, be found at page 45, line 1 to page 46, line 3 and page 150, lines 5-19.

Regarding Claims 82 and 120, Applicant respectfully submits that support for the subject matter of Claims 82 and 120 can, for example, be found at page 45, lines 17-19; page 46, lines 6-9; and page 47, lines 1-7.

Regarding Claims 83 and 119, Applicant respectfully submits that support for the subject matter of Claims 83 and 119 can, for example, be found at page 53, lines 13-22.

Regarding Claims 84, 85 and 117, Applicant

respectfully submits that support for the subject matter of Claims 84, 85 and 117 can, for example, be found at page 94, lines 1-12.

Regarding Claim 86, Applicant respectfully submits that support for the subject matter of Claim 86 can, for example, be found at page 89, lines 1-4.

Regarding Claim 87, Applicant respectfully submits that support for the subject matter of Claim 87 can, for example, be found at page 40, lines 9-30 and page 41, line 28 to page 43, line 11.

Regarding Claims 88 and 89, Applicant respectfully submits that support for the subject matter of Claims 88 and 89 can, for example, be found at page 45, lines 1-14.

Regarding Claim 90, Applicant respectfully submits that support for the subject matter of Claim 90 can, for example, be found at page 48, line 9 to page 49, line 12.

Regarding Claim 91, Applicant respectfully submits that support for the subject matter of Claim 91 can, for example, be found at page 49, line 13 to page 50, line 8.

Regarding Claim 92, Applicant respectfully submits that support for the subject matter of Claim 92 can, for example, be found at page 49, lines 6-12.

Regarding Claim 93, Applicant respectfully submits that support for the subject matter of Claim 93 can, for example, be found at page 50, lines 4-8.

Regarding Claims 94, 102 and 103, Applicant respectfully submits that support for the subject matter of Claims 94, 102 and 103, can, for example, be found at page 48, line 8 to page 50, line 8.

Regarding Claim 95, Applicant respectfully submits that support for the subject matter of Claim 95 can, for example, be found at page 50, lines 15-25; page 111, line 25 to page 112, line 7; page 119, line 26 to page 120, line 8; and page 125, lines 14-25.

Regarding Claims 96, 124 and 132, Applicant respectfully submits that support for the subject matter of Claims 96, 124 and 132 can, for example, be found at page 51, lines 18-22.

Regarding Claim 97, Applicant respectfully submits that support for the subject matter of Claim 97 can, for example, be found at page 104, line 3 to page 6, line 5.

Regarding Claims 98 and 125, Applicant respectfully submits that support for the subject matter of Claims 98 and 125 can, for example, be found at page 92, line 3 to page 93, line 13.

Regarding Claim 99, Applicant respectfully submits that support for the subject matter of Claim 99 can, for example, be found at page 105, lines 7-21.

Regarding Claims 100 and 126, Applicant respectfully submits that support for the subject matter of Claims 100 and 126 can, for example, be found at page 153, line 15 to page 154, line 3.

Regarding Claims 101 and 127, Applicant respectfully submits that support for the subject matter of Claims 101 and 127 can, for example, be found at page 150, lines 5-19.

Regarding Claims 104, 121 and 128, Applicant

respectfully submits that support for the subject matter of Claims 104, 121 and 128 can, for example, be found at page 59, line 23 to page 61, line 22; page 40, lines 9-30; page 41, line 28 to page 43, line 11; and originally filed Claim 10.

Regarding Claim 105, Applicant respectfully submits that support for the subject matter of Claim 105 can, for example, be found at 46, line 28 to page 52, line 21 and at page 38, line 20 to page 39, line 1.

Regarding Claim 106, Applicant respectfully submits that support for the subject matter of Claim 106 can, for example, be found at page 45, line 15 to page 46, line 27.

Regarding Claim 107, Applicant respectfully submits that support for the subject matter of Claim 107 can, for example, be found at page 108, line 1 to page 112, line 23; page 106, lines 6-14; and page 113, line 28 to page 114, line 7.

Regarding Claim 108, Applicant respectfully submits that support for the subject matter of Claim 108 can, for example, be found at page 116, line 1 to page 120, line 24;

page 114, lines 8-12; and page 121, line 27 to page 22, line 6.

Regarding Claim 109, Applicant respectfully submits that support for the subject matter of Claim 109 can, for example, be found at page 124, line 1 to page 126, line 12; page 122, lines 7-9; and page 127, lines 15-25.

Regarding Claim 110, Applicant respectfully submits that support for the subject matter of Claim 110 can, for example, be found at page 52, line 22 to page 55, line 17.

Regarding Claims 111, 118 and 129, Applicant respectfully submits that support for the subject matter of Claims 111, 118 and 129 can, for example, be found page 152, line 26 to page 153, line 14; page 94, lines 4-12, page 99, lines 18-22; page 150, lines 5-19; originally filed claim 1; and page 45, line 1 to page 46, line 3.

Regarding Claim 112, Applicant respectfully submits that support for the subject matter of Claim 112 can, for example, be found at page 48, line 9 to page 49, line 12.

Regarding Claim 113, Applicant respectfully submits that support for the subject matter of Claim 113 can, for example, be found at page 50, lines 15-25; page 111, line 25 to page 112, line 7; page 119, line 26 to page 120, line 8; and page 125, lines 14-25.

Regarding Claim 114, Applicant respectfully submits that support for the subject matter of Claim 114 can, for example, be found at page 51, lines 18-22.

Regarding Claim 115, Applicant respectfully submits that support for the subject matter of Claim 115 can, for example, be found at page 38, line 20 to page 39, line 1; page 106, lines 6-14; page 113, line 28 to page 114, line 12; page 122, lines 7-9; and page 127, lines 15-25.

Regarding Claims 122 and 130, Applicant respectfully submits that support for the subject matter of Claims 122 and 130 can, for example, be found at page 46, line 28 to page 47, line 7; page 48, line 9 to page 50, line 8; and page 153, lines 3-14.

Regarding Claims 123 and 131, Applicant respectfully submits that support for the subject matter of Claims 123

and 131 can, for example, be found at page 46, line 28 to page 47, line 7; page 50, lines 15-25; page 111, line 25 to page 112, line 7; page 119, line 26 to page 120, line 8; page 125, lines 14-25; and page 153, lines 3-14.

Regarding Claims 133, 134, 166, 196 and 197, Applicant respectfully submits that support for the subject matter of Claims 133, 134, 166, 196 and 197 can, for example, be found in originally filed Claim 20.

Regarding Claim 135, Applicant respectfully submits that support for the subject matter of Claim 135 can, for example, be found at page 128, line 3 to page 137, line 7.

Regarding Claim 136, Applicant respectfully submits that support for the subject matter of Claim 136 can, for example, be found at page 128, lines 3-11.

Regarding Claims 137 and 178, Applicant respectfully submits that support for the subject matter of Claims 137 and 178 can, for example, be found at page 132, lines 8-11.

Regarding Claim 138, Applicant respectfully submits that support for the subject matter of Claim 138 can, for

example, be found at page 138, line 26 to page 147, line 26.

Regarding Claim 139, Applicant respectfully submits that support for the subject matter of Claim 139 can, for example, be found at page 138, line 26 to page 139, line 10.

Regarding Claims 140 and 172, Applicant respectfully submits that support for the subject matter of Claims 140 and 172 can, for example, be found at page 136, lines 3-14 and page 148, lines 11-24.

Regarding Claims 141 and 181, Applicant respectfully submits that support for the subject matter of Claims 141 and 181 can, for example, be found at page 127, line 26 to page 148, line 10.

Regarding Claim 142, Applicant respectfully submits that support for the subject matter of Claim 142 can, for example, be found at page 67, lines 4-29; page 137, lines 7-14; and page 149, lines 3-15.

Regarding Claims 143 and 173, Applicant respectfully submits that support for the subject matter of Claims 143 and 173 can, for example, be found at page 136, lines 3-14 and page 148, lines 11-24.

Regarding Claims 144 and 145, Applicant respectfully submits that support for the subject matter of Claims 144 and 145 can, for example, be found at page 152, line 26 to page 153, line 14; page 94, lines 4-12, page 99, lines 18-22; page 150, lines 5-19; page 137, lines 7-22; page 138, line 8 to page 139, line 10; page 149, line 3 to page 150, line 19; and originally filed claim 1.

Regarding Claims 146, Applicant respectfully submits that support for the subject matter of Claim 146 can, for example, be found at page 45, line 1 to page 46, line 3; page 129, line 5 to page 130, line 22; and page 139, line 28 to page 141, line 30.

Regarding Claims 147, Applicant respectfully submits that support for the subject matter of Claim 147 can, for example, be found at page 128, lines 19-22; page 129, lines 13-29; page 131, lines 17-22; page 139, lines 14-16; page

140, lines 6-8; page 141, lines 3-6; and page 142, lines 8-15.

Regarding Claims 148 and 183, Applicant respectfully submits that support for the subject matter of Claims 148 and 183 can, for example, be found at page 53, lines 13-22; page 135, line 23 to page 136, line 2; and page 147, lines 3-12.

Regarding Claim 149, Applicant respectfully submits that support for the subject matter of Claim 149 can, for example, be found at page 137, lines 15-22 and page 149, line 27 to page 150, line 149, line 27 to page 150, line 4.

Regarding Claim 150, Applicant respectfully submits that support for the subject matter of Claim 150 can, for example, be found at page 153, lines 3-14.

Regarding Claim 151, Applicant respectfully submits that support for the subject matter of Claim 151 can, for example, be found at page 88, line 27 to page 89, line 4; page 128, lines 14-22; page 137, lines 7-14; page 138, line 26 to page 139, line 10; and page 149, lines 15.

Regarding Claim 152, Applicant respectfully submits that support for the subject matter of Claim 152 can, for example, be found at page 59, line 23 to page 61, line 22; page 40, lines 9-30; page 41, line 28 to page 43, line 11; page 137, lines 7-14; page 149, lines 3-15; and originally filed Claim 10.

Regarding Claims 153 and 154, Applicant respectfully submits that support for the subject matter of Claims 153 and 154 can, for example, be found at page 45, lines 1-14; page 128, lines 3-22; page 137, lines 7-14; page 138, lines 26 to page 139, line 10; and page 149, lines 3-15.

Regarding Claims 155, 156, 157, 158, 159, 167, 168, 175, 185, 186, and 194, Applicant respectfully submits that support for Claims 155, 156, 157, 158, 159, 167, 168, 175, 185, 186, and 194 can, for example, be found at page 132, line 28 to page 135, line 4 and page 143, line 27 to page 146, line 9.

Regarding Claims 160, 176, 187 and 195, Applicant respectfully submits that support for Claims 160, 176, 187 and 195 can, for example, be found at page 135, lines 9-22 and page 146, line 16 to page 147, line 2.

Regarding Claims 161, 165 and 188, Applicant respectfully submits that support for Claims 161, 165 and 188 can, for example, be found at page 59, line 23 to page 61, line 22; page 137, lines 7-14; and page 149, lines 3-15.

Regarding Claims 162 and 189, Applicant respectfully submits that support for Claims 162 and 189 can, for example, be found at page 105, lines 7-21; page 137, lines 7-14; and page 149, lines 3-15.

Regarding Claims 163 and 190, Applicant respectfully submits that support for Claims 163 and 190 can, for example, be found at page 153, line 15 to page 154, line 3.

Regarding Claims 164 and 191, Applicant respectfully submits that support for Claims 164 and 191 can, for example, be found at page 137, line 7 to page 138, line 7 and page 149, line 27 to page 150, line 19.

Regarding Claims 169 and 192, Applicant respectfully submits that support for Claims 169 and 192 can, for example, be found at page 59, line 23 to page 61, line 22;

page 40, lines 9-30; page 41, lines 28 to page 43, line 11; page 137, lines 7-14; page 149, lines 3-15; and originally filed Claim 10.

Regarding Claims 170 and 177, Applicant respectfully submits that support for Claims 170 and 177 can, for example, be found at page 128, line 3 to page 137, line 7.

Regarding Claims 171 and 179, Applicant respectfully submits that support for Claims 171 and 179 can, for example, be found at page 138, line 26 to page 149, line 2.

Regarding Claims 174, 182 and 193, Applicant respectfully submits that support for Claims 174, 182 and 193 can, for example, be found at page 152, line 26 to page 153, line 14; page 94, lines 4-12, page 99, lines 18-22; page 150, lines 5-19; page 137, lines 7-22; page 138, line 8 to page 139, line 10; page 149, line 3 to page 150, line 19; page 45, line 1 to page 46, line 3; page 129, line 5 to page 130, line 22; and page 139, line 28 to page 141, line 30; and originally filed Claim 1.

Regarding Claim 180, Applicant respectfully submits that support for Claim 180 can, for example, be found at

page 136, lines 3-14; and page 148, lines 11-24.

Regarding Claim 184, Applicant respectfully submits that support for Claim 184 can, for example, be found at page 45, lines 1-14; page 128, line 14 to page 130, line 22; page 137, line 7 to page 141, line 16; and page 149, line 27 to page 150, line 19.

Applicant respectfully submits that the above amendments to the claims do not contain new matter. Applicant submits that the above amendments to the claims were not made for purposes related to patentability.


Entry of this Fourth Preliminary Amendment, before any Official Action is taken in this case, is respectfully requested.

A Fee Transmittal Sheet along with a check in the amount of \$1,044.00, for payment for one hundred and sixteen (116) additional dependent claims, is submitted herewith.

An Information Disclosure Statement is also submitted herewith.

A Communication is also submitted herewith.

Respectfully Submitted,


Raymond A. Joao
Reg. No. 35,907

- Encls. - Fee Transmittal Sheet (in duplicate)
- Check for \$1,044.00 for payment for one hundred
and sixteen (116) additional dependent claims
- Information Disclosure Statement
- Communication

January 15, 2002

Raymond A. Joao, Esq.
122 Bellevue Place
Yonkers, New York 10703
(914) 969-2992

A

Please type a plus sign (+) inside this box →

Approved for use through 09/30/2000. OMB 0651-0032
Patent and Trademark Office: U.S. DEPARTMENT OF COMMERCE
Under the Paperwork Reduction Act of 1995, no persons are required to respond to a collection of information unless it displays a valid OMB control number.

JCS44 U.S. PTO
03/29/99

| | |
|--|--|
| UTILITY PATENT APPLICATION TRANSMITTAL <small>(Only for new nonprovisional applications under 37 C.F.R. § 1.53(b))</small> | Attorney Docket No. RJ015 |
| | First Inventor or Application Identifier RAYMOND A. JOAO |
| | Title REMOTE-CONTROLLED CONTROL, MONITORING AND/OR SECURITY APPARATUS AND METHOD FOR VEHICLES, MOTOR VEHICLES, MARINE VESSELS AND VEHICLES, AIRCRAFT, RECREATIONAL VEHICLES, RESIDENTIAL PREMISES AND/OR COMMERCIAL PREMISES |
| | Express Mail Label No. EJ626399927US |

APPLICATION ELEMENTS
See MPEP chapter 600 concerning utility patent application contents.

ADDRESS TO: Assistant Commissioner for Patents
Box Patent Application
Washington, DC 20231

- * Fee Transmittal Form (e.g., PTO/SB/17)
(Submit an original and a duplicate for fee processing)
- Specification [Total Pages 162]
(preferred arrangement set forth below)
 - Descriptive title of the Invention
 - Cross References to Related Applications
 - Statement Regarding Fed sponsored R & D
 - Reference to Microfiche Appendix
 - Background of the Invention
 - Brief Summary of the Invention
 - Brief Description of the Drawings (if filed)
 - Detailed Description
 - Claim(s)
 - Abstract of the Disclosure
- Drawing(s) (35 U.S.C. 113) [Total Sheets 18]
- Oath or Declaration [Total Pages 3]
 - Newly executed (original or copy)
 - Copy from a prior application (37 C.F.R. § 1.63(d))
(for continuation/divisional with Box 16 completed)
 - DELETION OF INVENTOR(S)**
Signed statement attached deleting inventor(s) named in the prior application, see 37 C.F.R. §§ 1.63(d)(2) and 1.33(b).

- Microfiche Computer Program (Appendix)
- Nucleotide and/or Amino Acid Sequence Submission (if applicable, all necessary)
 - Computer Readable Copy
 - Paper Copy (identical to computer copy)
 - Statement verifying identity of above copies

- ACCOMPANYING APPLICATION PARTS**
- Assignment Papers (cover sheet & document(s))
 - 37 C.F.R. §3.73(b) Statement of Attorney (when there is an assignee) Power of Attorney
 - English Translation Document (if applicable)
 - Information Disclosure Statement (IDS)/PTO-1449 Copies of IDS Citations
 - Preliminary Amendment
 - Return Receipt Postcard (MPEP 503)
(Should be specifically itemized)
 - * Small Entity Statement(s) Statement filed in prior application, Status still proper and desired (PTO/SB/09-12)
 - Certified Copy of Priority Document(s) (if foreign priority is claimed)
 - Other:

*** NOTE FOR ITEMS 1 & 13: IN ORDER TO BE ENTITLED TO PAY SMALL ENTITY FEES, A SMALL ENTITY STATEMENT IS REQUIRED (37 C.F.R. § 1.27), EXCEPT IF ONE FILED IN A PRIOR APPLICATION IS RELIED UPON (37 C.F.R. § 1.28).**

16. If a **CONTINUING APPLICATION**, check appropriate box, and supply the requisite information below and in a preliminary amendment:
 Continuation Divisional Continuation-in-part (CIP) of prior application No: 08 / 683,828
 Prior application information: Examiner T. EDWARDS Group / Art Unit: 2735 7/18/96
For CONTINUATION or DIVISIONAL APPS only: The entire disclosure of the prior application, from which an oath or declaration is supplied under Box 4b, is considered a part of the disclosure of the accompanying continuation or divisional application and is hereby incorporated by reference. The incorporation can only be relied upon when a portion has been inadvertently omitted from the submitted application parts.

17. CORRESPONDENCE ADDRESS

Customer Number or Bar Code Label (Insert Customer No. or Attach bar code label here) or Correspondence address below

| | | | | |
|---------|-----------------------|-----------|--------------|------------------|
| Name | RAYMOND A. JOAO, ESQ. | | | |
| Address | 122 BELLEVUE PLACE | | | |
| City | YONKERS | State | NEW YORK | Zip Code 10703 |
| Country | USA | Telephone | 914-969-2992 | Fax 914-969-2992 |

| | | | |
|-------------------|------------------------|-----------------------------------|---------|
| Name (Print/Type) | RAYMOND A. JOAO | Registration No. (Attorney/Agent) | 35,907 |
| Signature | <i>Raymond A. Joao</i> | Date | 3/29/99 |

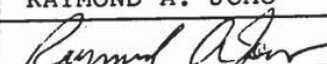
Burden Hour Statement: This form is estimated to take 0.2 hours to complete. Time will vary depending upon the needs of the individual case. Any comments on the amount of time you are required to complete this form should be sent to the Chief Information Officer, Patent and Trademark Office, Washington, DC 20231. DO NOT SEND FEES OR COMPLETED FORMS TO THIS ADDRESS. SEND TO: Assistant Commissioner for Patents, Box Patent Application, Washington, DC 20231.

Under the Paperwork Reduction Act of 1995, no persons are required to respond to a collection of information unless it displays a valid OMB control number.

| | | |
|---|--------------------------|---------------------------|
| <h1 style="margin: 0;">FEE TRANSMITTAL</h1> <h2 style="margin: 0;">for FY 1999</h2> <p style="font-size: small; margin: 0;">Patent fees are subject to annual revision. Small Entity payments <u>must</u> be supported by a small entity statement, otherwise large entity fees must be paid. See Forms PTO/SB/09-12.</p> | Complete if Known | |
| | Application Number | |
| | Filing Date | MARCH 29, 1999 |
| | First Named Inventor | RAYMOND A. JOAO |
| | Examiner Name | T. EDWARDS |
| | Group / Art Unit | 2735 |
| TOTAL AMOUNT OF PAYMENT (\$) | | 380.00 |
| | | Attorney Docket No. RJ015 |

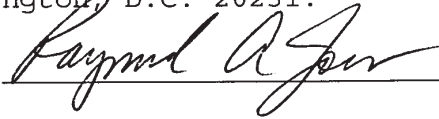
3542 U.S. PTO
 09/27/99
 03/29/99

| <p>METHOD OF PAYMENT (check one)</p> <p>1. <input type="checkbox"/> The Commissioner is hereby authorized to charge indicated fees and credit any over payments to:</p> <p>Deposit Account Number <input type="text"/></p> <p>Deposit Account Name <input type="text"/></p> <p><input type="checkbox"/> Charge Any Additional Fee Required Under 37 CFR 1.16 and 1.17</p> <p>2. <input checked="" type="checkbox"/> Payment Enclosed: <input checked="" type="checkbox"/> Check <input type="checkbox"/> Money Order <input type="checkbox"/> Other</p> | <p>FEE CALCULATION (continued)</p> <p>3. ADDITIONAL FEES</p> <table border="1"> <thead> <tr> <th>Large Entity Fee Code (\$)</th> <th>Small Entity Fee Code (\$)</th> <th>Fee Description</th> <th>Fee Paid</th> </tr> </thead> <tbody> <tr><td>105 130 205 65</td><td></td><td>Surcharge - late filing fee or oath</td><td></td></tr> <tr><td>127 50 227 25</td><td></td><td>Surcharge - late provisional filing fee or cover sheet.</td><td></td></tr> <tr><td>139 130 139 130</td><td></td><td>Non-English specification</td><td></td></tr> <tr><td>147 2,520 147 2,520</td><td></td><td>For filing a request for reexamination</td><td></td></tr> <tr><td>112 920* 112 920*</td><td></td><td>Requesting publication of SIR prior to Examiner action</td><td></td></tr> <tr><td>113 1,840* 113 1,840*</td><td></td><td>Requesting publication of SIR after Examiner action</td><td></td></tr> <tr><td>115 110 215 55</td><td></td><td>Extension for reply within first month</td><td></td></tr> <tr><td>116 380 216 190</td><td></td><td>Extension for reply within second month</td><td></td></tr> <tr><td>117 870 217 435</td><td></td><td>Extension for reply within third month</td><td></td></tr> <tr><td>118 1,360 218 680</td><td></td><td>Extension for reply within fourth month</td><td></td></tr> <tr><td>128 1,850 228 925</td><td></td><td>Extension for reply within fifth month</td><td></td></tr> <tr><td>119 300 219 150</td><td></td><td>Notice of Appeal</td><td></td></tr> <tr><td>120 300 220 150</td><td></td><td>Filing a brief in support of an appeal</td><td></td></tr> <tr><td>121 260 221 130</td><td></td><td>Request for oral hearing</td><td></td></tr> <tr><td>138 1,510 138 1,510</td><td></td><td>Petition to institute a public use proceeding</td><td></td></tr> <tr><td>140 110 240 55</td><td></td><td>Petition to revive - unavoidable</td><td></td></tr> <tr><td>141 1,210 241 605</td><td></td><td>Petition to revive - unintentional</td><td></td></tr> <tr><td>142 1,210 242 605</td><td></td><td>Utility issue fee (or reissue)</td><td></td></tr> <tr><td>143 430 243 215</td><td></td><td>Design issue fee</td><td></td></tr> <tr><td>144 580 244 290</td><td></td><td>Plant issue fee</td><td></td></tr> <tr><td>122 130 122 130</td><td></td><td>Petitions to the Commissioner</td><td></td></tr> <tr><td>123 50 123 50</td><td></td><td>Petitions related to provisional applications</td><td></td></tr> <tr><td>126 240 126 240</td><td></td><td>Submission of Information Disclosure Stmt</td><td></td></tr> <tr><td>581 40 581 40</td><td></td><td>Recording each patent assignment per property (times number of properties)</td><td></td></tr> <tr><td>146 760 246 380</td><td></td><td>Filing a submission after final rejection (37 CFR 1.129(a))</td><td></td></tr> <tr><td>149 760 249 380</td><td></td><td>For each additional invention to be examined (37 CFR 1.129(b))</td><td></td></tr> <tr><td colspan="3">Other fee (specify) _____</td><td></td></tr> <tr><td colspan="3">Other fee (specify) _____</td><td></td></tr> <tr> <td colspan="3" style="text-align: right;">Reduced by Basic Filing Fee Paid</td> <td>SUBTOTAL (3) (\$)</td> </tr> </tbody> </table> | Large Entity Fee Code (\$) | Small Entity Fee Code (\$) | Fee Description | Fee Paid | 105 130 205 65 | | Surcharge - late filing fee or oath | | 127 50 227 25 | | Surcharge - late provisional filing fee or cover sheet. | | 139 130 139 130 | | Non-English specification | | 147 2,520 147 2,520 | | For filing a request for reexamination | | 112 920* 112 920* | | Requesting publication of SIR prior to Examiner action | | 113 1,840* 113 1,840* | | Requesting publication of SIR after Examiner action | | 115 110 215 55 | | Extension for reply within first month | | 116 380 216 190 | | Extension for reply within second month | | 117 870 217 435 | | Extension for reply within third month | | 118 1,360 218 680 | | Extension for reply within fourth month | | 128 1,850 228 925 | | Extension for reply within fifth month | | 119 300 219 150 | | Notice of Appeal | | 120 300 220 150 | | Filing a brief in support of an appeal | | 121 260 221 130 | | Request for oral hearing | | 138 1,510 138 1,510 | | Petition to institute a public use proceeding | | 140 110 240 55 | | Petition to revive - unavoidable | | 141 1,210 241 605 | | Petition to revive - unintentional | | 142 1,210 242 605 | | Utility issue fee (or reissue) | | 143 430 243 215 | | Design issue fee | | 144 580 244 290 | | Plant issue fee | | 122 130 122 130 | | Petitions to the Commissioner | | 123 50 123 50 | | Petitions related to provisional applications | | 126 240 126 240 | | Submission of Information Disclosure Stmt | | 581 40 581 40 | | Recording each patent assignment per property (times number of properties) | | 146 760 246 380 | | Filing a submission after final rejection (37 CFR 1.129(a)) | | 149 760 249 380 | | For each additional invention to be examined (37 CFR 1.129(b)) | | Other fee (specify) _____ | | | | Other fee (specify) _____ | | | | Reduced by Basic Filing Fee Paid | | | SUBTOTAL (3) (\$) |
|---|--|--|----------------------------|-----------------|----------|----------------|--|-------------------------------------|--|---------------|--|---|--|-----------------|--|---------------------------|--|---------------------|--|--|--|-------------------|--|--|--|-----------------------|--|---|--|----------------|--|--|--|-----------------|--|---|--|-----------------|--|--|--|-------------------|--|---|--|-------------------|--|--|--|-----------------|--|------------------|--|-----------------|--|--|--|-----------------|--|--------------------------|--|---------------------|--|---|--|----------------|--|----------------------------------|--|-------------------|--|------------------------------------|--|-------------------|--|--------------------------------|--|-----------------|--|------------------|--|-----------------|--|-----------------|--|-----------------|--|-------------------------------|--|---------------|--|---|--|-----------------|--|---|--|---------------|--|--|--|-----------------|--|---|--|-----------------|--|--|--|---------------------------|--|--|--|---------------------------|--|--|--|---|--|--|--------------------------|
| Large Entity Fee Code (\$) | Small Entity Fee Code (\$) | Fee Description | Fee Paid | | | | | | | | | | | | | | | | | | | | | | | | | | | | | | | | | | | | | | | | | | | | | | | | | | | | | | | | | | | | | | | | | | | | | | | | | | | | | | | | | | | | | | | | | | | | | | | | | | | | | | | | | | | | | | | | | | | | | | |
| 105 130 205 65 | | Surcharge - late filing fee or oath | | | | | | | | | | | | | | | | | | | | | | | | | | | | | | | | | | | | | | | | | | | | | | | | | | | | | | | | | | | | | | | | | | | | | | | | | | | | | | | | | | | | | | | | | | | | | | | | | | | | | | | | | | | | | | | | | | | | | | | |
| 127 50 227 25 | | Surcharge - late provisional filing fee or cover sheet. | | | | | | | | | | | | | | | | | | | | | | | | | | | | | | | | | | | | | | | | | | | | | | | | | | | | | | | | | | | | | | | | | | | | | | | | | | | | | | | | | | | | | | | | | | | | | | | | | | | | | | | | | | | | | | | | | | | | | | | |
| 139 130 139 130 | | Non-English specification | | | | | | | | | | | | | | | | | | | | | | | | | | | | | | | | | | | | | | | | | | | | | | | | | | | | | | | | | | | | | | | | | | | | | | | | | | | | | | | | | | | | | | | | | | | | | | | | | | | | | | | | | | | | | | | | | | | | | | | |
| 147 2,520 147 2,520 | | For filing a request for reexamination | | | | | | | | | | | | | | | | | | | | | | | | | | | | | | | | | | | | | | | | | | | | | | | | | | | | | | | | | | | | | | | | | | | | | | | | | | | | | | | | | | | | | | | | | | | | | | | | | | | | | | | | | | | | | | | | | | | | | | | |
| 112 920* 112 920* | | Requesting publication of SIR prior to Examiner action | | | | | | | | | | | | | | | | | | | | | | | | | | | | | | | | | | | | | | | | | | | | | | | | | | | | | | | | | | | | | | | | | | | | | | | | | | | | | | | | | | | | | | | | | | | | | | | | | | | | | | | | | | | | | | | | | | | | | | | |
| 113 1,840* 113 1,840* | | Requesting publication of SIR after Examiner action | | | | | | | | | | | | | | | | | | | | | | | | | | | | | | | | | | | | | | | | | | | | | | | | | | | | | | | | | | | | | | | | | | | | | | | | | | | | | | | | | | | | | | | | | | | | | | | | | | | | | | | | | | | | | | | | | | | | | | | |
| 115 110 215 55 | | Extension for reply within first month | | | | | | | | | | | | | | | | | | | | | | | | | | | | | | | | | | | | | | | | | | | | | | | | | | | | | | | | | | | | | | | | | | | | | | | | | | | | | | | | | | | | | | | | | | | | | | | | | | | | | | | | | | | | | | | | | | | | | | | |
| 116 380 216 190 | | Extension for reply within second month | | | | | | | | | | | | | | | | | | | | | | | | | | | | | | | | | | | | | | | | | | | | | | | | | | | | | | | | | | | | | | | | | | | | | | | | | | | | | | | | | | | | | | | | | | | | | | | | | | | | | | | | | | | | | | | | | | | | | | | |
| 117 870 217 435 | | Extension for reply within third month | | | | | | | | | | | | | | | | | | | | | | | | | | | | | | | | | | | | | | | | | | | | | | | | | | | | | | | | | | | | | | | | | | | | | | | | | | | | | | | | | | | | | | | | | | | | | | | | | | | | | | | | | | | | | | | | | | | | | | | |
| 118 1,360 218 680 | | Extension for reply within fourth month | | | | | | | | | | | | | | | | | | | | | | | | | | | | | | | | | | | | | | | | | | | | | | | | | | | | | | | | | | | | | | | | | | | | | | | | | | | | | | | | | | | | | | | | | | | | | | | | | | | | | | | | | | | | | | | | | | | | | | | |
| 128 1,850 228 925 | | Extension for reply within fifth month | | | | | | | | | | | | | | | | | | | | | | | | | | | | | | | | | | | | | | | | | | | | | | | | | | | | | | | | | | | | | | | | | | | | | | | | | | | | | | | | | | | | | | | | | | | | | | | | | | | | | | | | | | | | | | | | | | | | | | | |
| 119 300 219 150 | | Notice of Appeal | | | | | | | | | | | | | | | | | | | | | | | | | | | | | | | | | | | | | | | | | | | | | | | | | | | | | | | | | | | | | | | | | | | | | | | | | | | | | | | | | | | | | | | | | | | | | | | | | | | | | | | | | | | | | | | | | | | | | | | |
| 120 300 220 150 | | Filing a brief in support of an appeal | | | | | | | | | | | | | | | | | | | | | | | | | | | | | | | | | | | | | | | | | | | | | | | | | | | | | | | | | | | | | | | | | | | | | | | | | | | | | | | | | | | | | | | | | | | | | | | | | | | | | | | | | | | | | | | | | | | | | | | |
| 121 260 221 130 | | Request for oral hearing | | | | | | | | | | | | | | | | | | | | | | | | | | | | | | | | | | | | | | | | | | | | | | | | | | | | | | | | | | | | | | | | | | | | | | | | | | | | | | | | | | | | | | | | | | | | | | | | | | | | | | | | | | | | | | | | | | | | | | | |
| 138 1,510 138 1,510 | | Petition to institute a public use proceeding | | | | | | | | | | | | | | | | | | | | | | | | | | | | | | | | | | | | | | | | | | | | | | | | | | | | | | | | | | | | | | | | | | | | | | | | | | | | | | | | | | | | | | | | | | | | | | | | | | | | | | | | | | | | | | | | | | | | | | | |
| 140 110 240 55 | | Petition to revive - unavoidable | | | | | | | | | | | | | | | | | | | | | | | | | | | | | | | | | | | | | | | | | | | | | | | | | | | | | | | | | | | | | | | | | | | | | | | | | | | | | | | | | | | | | | | | | | | | | | | | | | | | | | | | | | | | | | | | | | | | | | | |
| 141 1,210 241 605 | | Petition to revive - unintentional | | | | | | | | | | | | | | | | | | | | | | | | | | | | | | | | | | | | | | | | | | | | | | | | | | | | | | | | | | | | | | | | | | | | | | | | | | | | | | | | | | | | | | | | | | | | | | | | | | | | | | | | | | | | | | | | | | | | | | | |
| 142 1,210 242 605 | | Utility issue fee (or reissue) | | | | | | | | | | | | | | | | | | | | | | | | | | | | | | | | | | | | | | | | | | | | | | | | | | | | | | | | | | | | | | | | | | | | | | | | | | | | | | | | | | | | | | | | | | | | | | | | | | | | | | | | | | | | | | | | | | | | | | | |
| 143 430 243 215 | | Design issue fee | | | | | | | | | | | | | | | | | | | | | | | | | | | | | | | | | | | | | | | | | | | | | | | | | | | | | | | | | | | | | | | | | | | | | | | | | | | | | | | | | | | | | | | | | | | | | | | | | | | | | | | | | | | | | | | | | | | | | | | |
| 144 580 244 290 | | Plant issue fee | | | | | | | | | | | | | | | | | | | | | | | | | | | | | | | | | | | | | | | | | | | | | | | | | | | | | | | | | | | | | | | | | | | | | | | | | | | | | | | | | | | | | | | | | | | | | | | | | | | | | | | | | | | | | | | | | | | | | | | |
| 122 130 122 130 | | Petitions to the Commissioner | | | | | | | | | | | | | | | | | | | | | | | | | | | | | | | | | | | | | | | | | | | | | | | | | | | | | | | | | | | | | | | | | | | | | | | | | | | | | | | | | | | | | | | | | | | | | | | | | | | | | | | | | | | | | | | | | | | | | | | |
| 123 50 123 50 | | Petitions related to provisional applications | | | | | | | | | | | | | | | | | | | | | | | | | | | | | | | | | | | | | | | | | | | | | | | | | | | | | | | | | | | | | | | | | | | | | | | | | | | | | | | | | | | | | | | | | | | | | | | | | | | | | | | | | | | | | | | | | | | | | | | |
| 126 240 126 240 | | Submission of Information Disclosure Stmt | | | | | | | | | | | | | | | | | | | | | | | | | | | | | | | | | | | | | | | | | | | | | | | | | | | | | | | | | | | | | | | | | | | | | | | | | | | | | | | | | | | | | | | | | | | | | | | | | | | | | | | | | | | | | | | | | | | | | | | |
| 581 40 581 40 | | Recording each patent assignment per property (times number of properties) | | | | | | | | | | | | | | | | | | | | | | | | | | | | | | | | | | | | | | | | | | | | | | | | | | | | | | | | | | | | | | | | | | | | | | | | | | | | | | | | | | | | | | | | | | | | | | | | | | | | | | | | | | | | | | | | | | | | | | | |
| 146 760 246 380 | | Filing a submission after final rejection (37 CFR 1.129(a)) | | | | | | | | | | | | | | | | | | | | | | | | | | | | | | | | | | | | | | | | | | | | | | | | | | | | | | | | | | | | | | | | | | | | | | | | | | | | | | | | | | | | | | | | | | | | | | | | | | | | | | | | | | | | | | | | | | | | | | | |
| 149 760 249 380 | | For each additional invention to be examined (37 CFR 1.129(b)) | | | | | | | | | | | | | | | | | | | | | | | | | | | | | | | | | | | | | | | | | | | | | | | | | | | | | | | | | | | | | | | | | | | | | | | | | | | | | | | | | | | | | | | | | | | | | | | | | | | | | | | | | | | | | | | | | | | | | | | |
| Other fee (specify) _____ | | | | | | | | | | | | | | | | | | | | | | | | | | | | | | | | | | | | | | | | | | | | | | | | | | | | | | | | | | | | | | | | | | | | | | | | | | | | | | | | | | | | | | | | | | | | | | | | | | | | | | | | | | | | | | | | | | | | | | | | | |
| Other fee (specify) _____ | | | | | | | | | | | | | | | | | | | | | | | | | | | | | | | | | | | | | | | | | | | | | | | | | | | | | | | | | | | | | | | | | | | | | | | | | | | | | | | | | | | | | | | | | | | | | | | | | | | | | | | | | | | | | | | | | | | | | | | | | |
| Reduced by Basic Filing Fee Paid | | | SUBTOTAL (3) (\$) | | | | | | | | | | | | | | | | | | | | | | | | | | | | | | | | | | | | | | | | | | | | | | | | | | | | | | | | | | | | | | | | | | | | | | | | | | | | | | | | | | | | | | | | | | | | | | | | | | | | | | | | | | | | | | | | | | | | | | |

| | | | |
|-----------------------|---|---------------------------------|---------|
| SUBMITTED BY | | Complete (if applicable) | |
| Typed or Printed Name | RAYMOND A. JOAO | Reg. Number | 35,907 |
| Signature |  | Date | 3/29/99 |
| | | Deposit Account User ID | |

Burden Hour Statement: This form is estimated to take 0.2 hours to complete. Time will vary depending upon the needs of the individual case. Any comments on the amount of time you are required to complete this form should be sent to the Chief Information Officer, Patent and Trademark Office, Washington, DC 20231. DO NOT SEND FEES OR COMPLETED FORMS TO THIS ADDRESS. SEND TO: Assistant Commissioner for Patents, Washington, DC 20231.

"Express Mail" No.: EJ626399927US Date: March 29, 1999
I hereby certify that this correspondence is being
deposited with the United States Postal Service "Express
Mail Post Office to Addressee" service under 37 CFR 1.10 on
the date indicated above and is addressed to the Assistant
Commissioner of Patents, Washington, D.C. 20231.



RJ015

IN THE UNITED STATES PATENT AND TRADEMARK OFFICE

APPLICANT : RAYMOND A. JOAO

SERIAL NO.: CONTINUATION OF SERIAL NO. 08/683,828

FILED : CONCURRENTLY HEREWITH

FOR : REMOTE-CONTROLLED CONTROL, MONITORING AND/OR
SECURITY APPARATUS AND METHOD FOR VEHICLES,
MOTOR VEHICLES, MARINE VESSELS AND VEHICLES,
AIRCRAFT, RECREATIONAL VEHICLES, RESIDENTIAL
PREMISES AND/OR COMMERCIAL PREMISES

EXAMINER : T. EDWARDS GROUP : 2735

Assistant Commissioner for Patents
Washington, D.C. 20231

TRANSMITTAL LETTER

Sir:

Please find enclosed herewith the following papers for
filing as a Continuation Application under 37 C.F.R. §1.53:

1. Utility Patent Application Transmittal Sheet;

2. Fee Transmittal Sheet;
3. Copy of Oath or Declaration from prior application;
4. Copy of Small Entity Status Form from prior application;
5. Copy of Application, including Specification, Claims, Abstract of the Disclosure (162 pages), and 18 sheets of Drawings;
6. Check in the amount of \$380.00 for the filing fee;
7. Return receipt postcard.

Respectfully Submitted,



Raymond A. Joao
Reg. No. 35,907

encls:

March 29, 1999

122 Bellevue Place
Yonkers, New York 10703
(914) 969-2992

340/426

66620*5662260

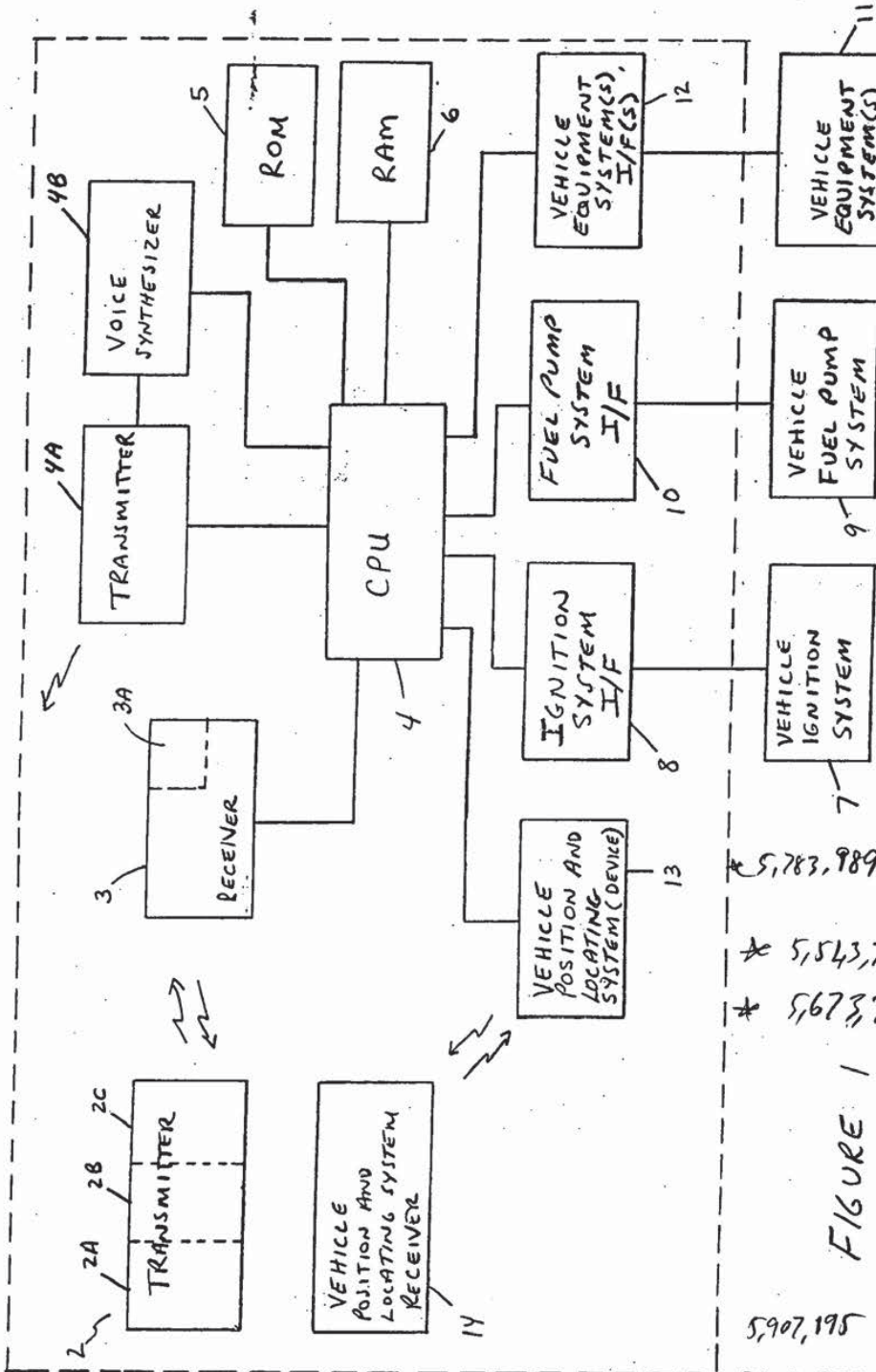


FIGURE 1

6,028,537 340/988,426, 342/457
 6,025,788 340/870.16, 605,539
 6,002,326 340/626,937; 307/10.2,
 5,920,270 340/825.77.

* 5,783,989 340/4
 * 5,543,776 340/4
 * 5,673,304

5,907,195 307/10.3
 5,903,226

5,838,255 340/826
 5,835,868 340/426
 5,793,300 340/825.2

666220 SE67260

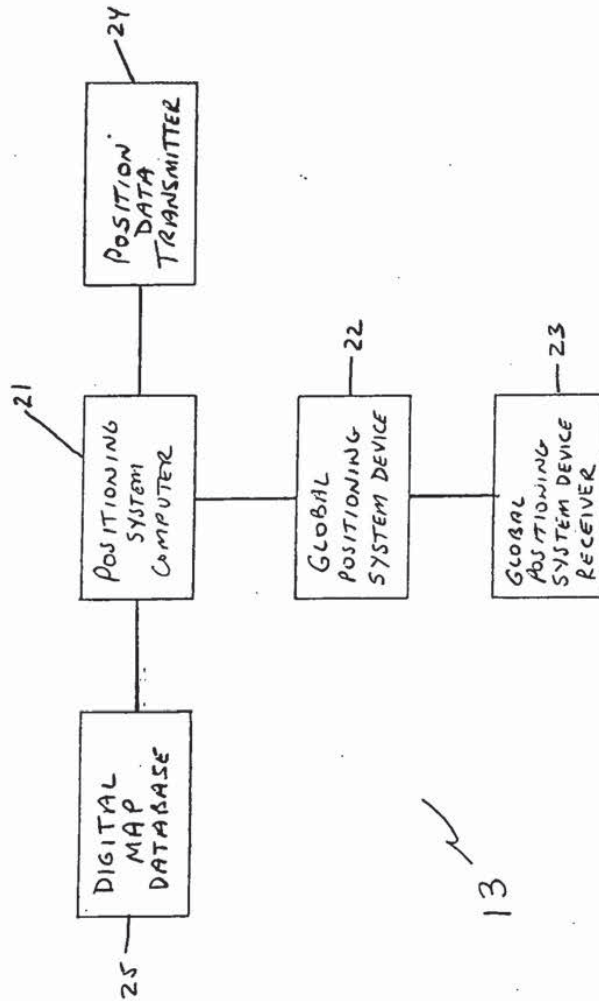
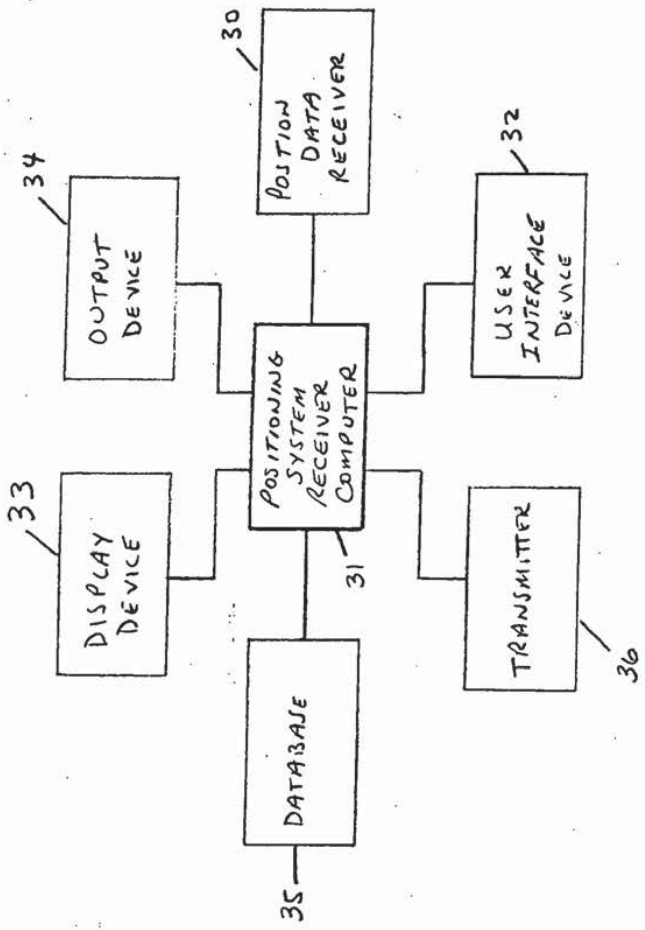


FIGURE 2

060220 5E64260



14

FIGURE 3

00000000000000000000

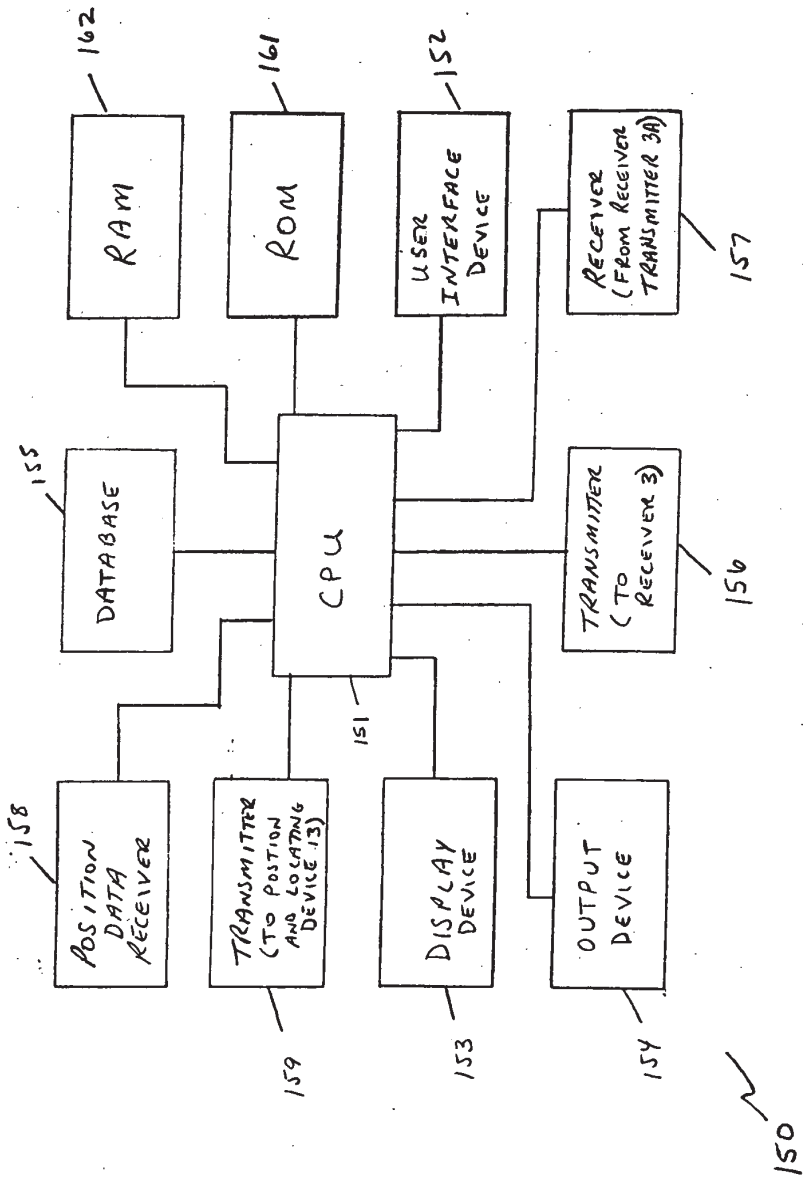


FIGURE 4

00000000000000000000

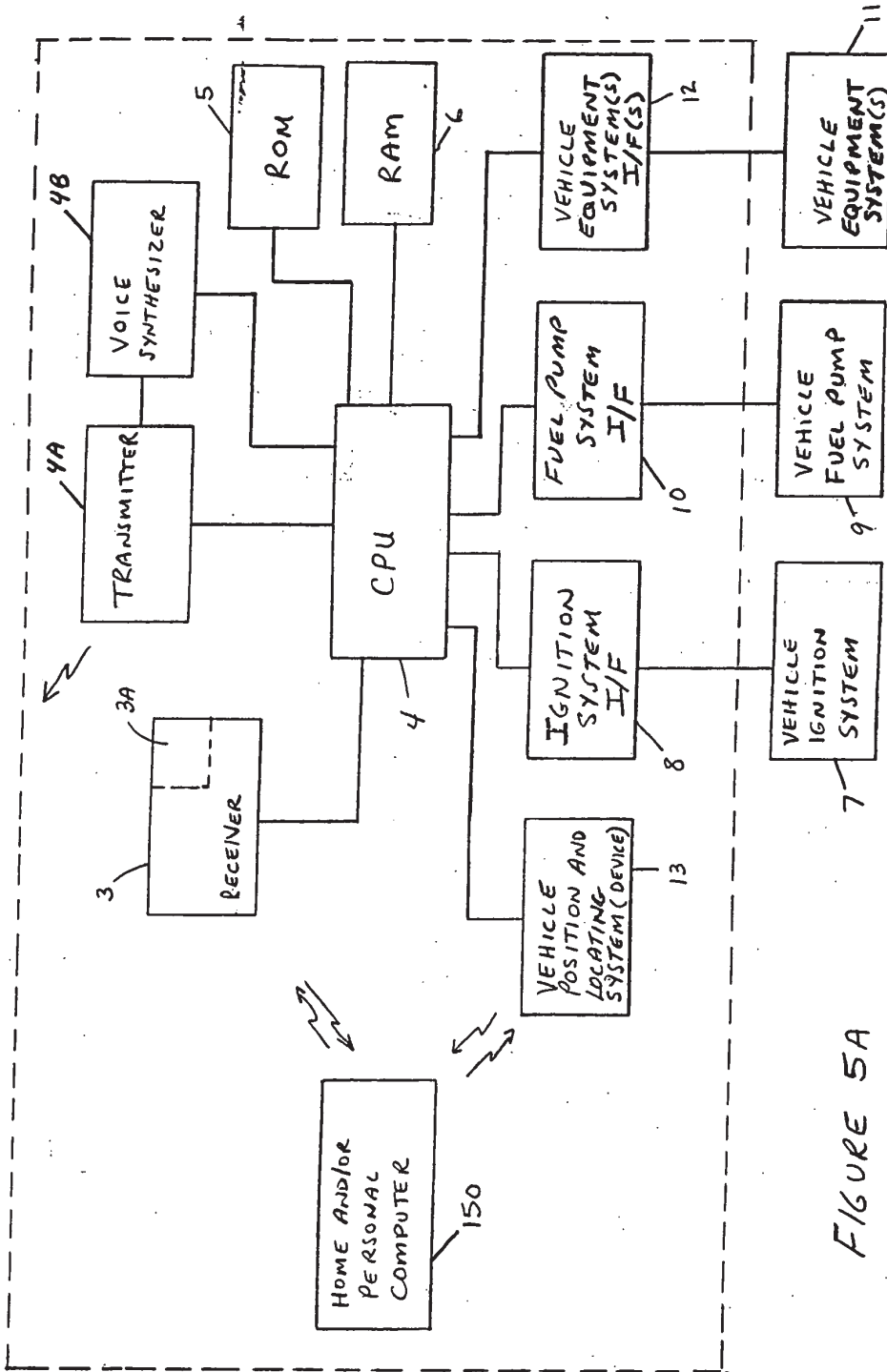


FIGURE 5A

002795-02000

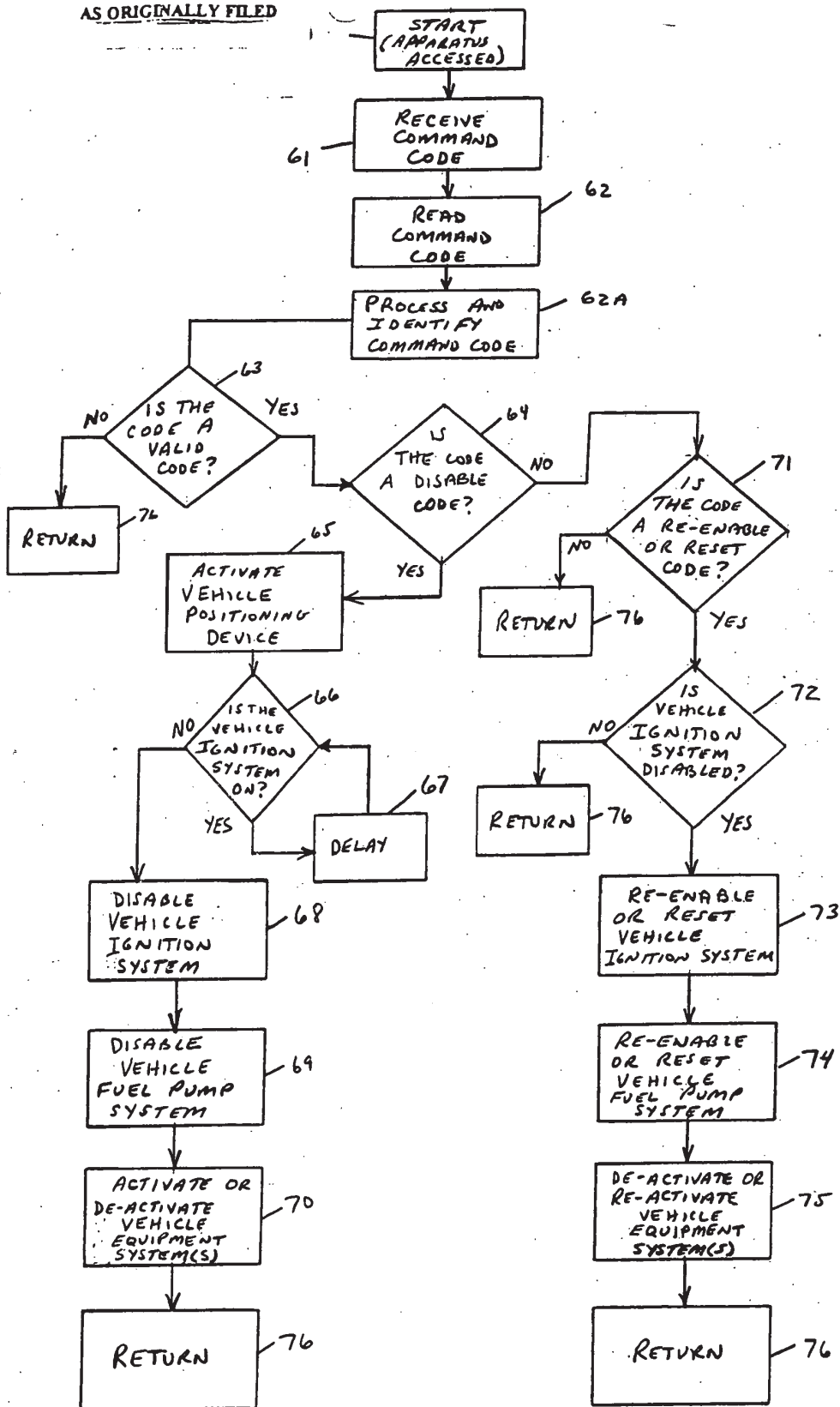


FIGURE 6

0927425-02009

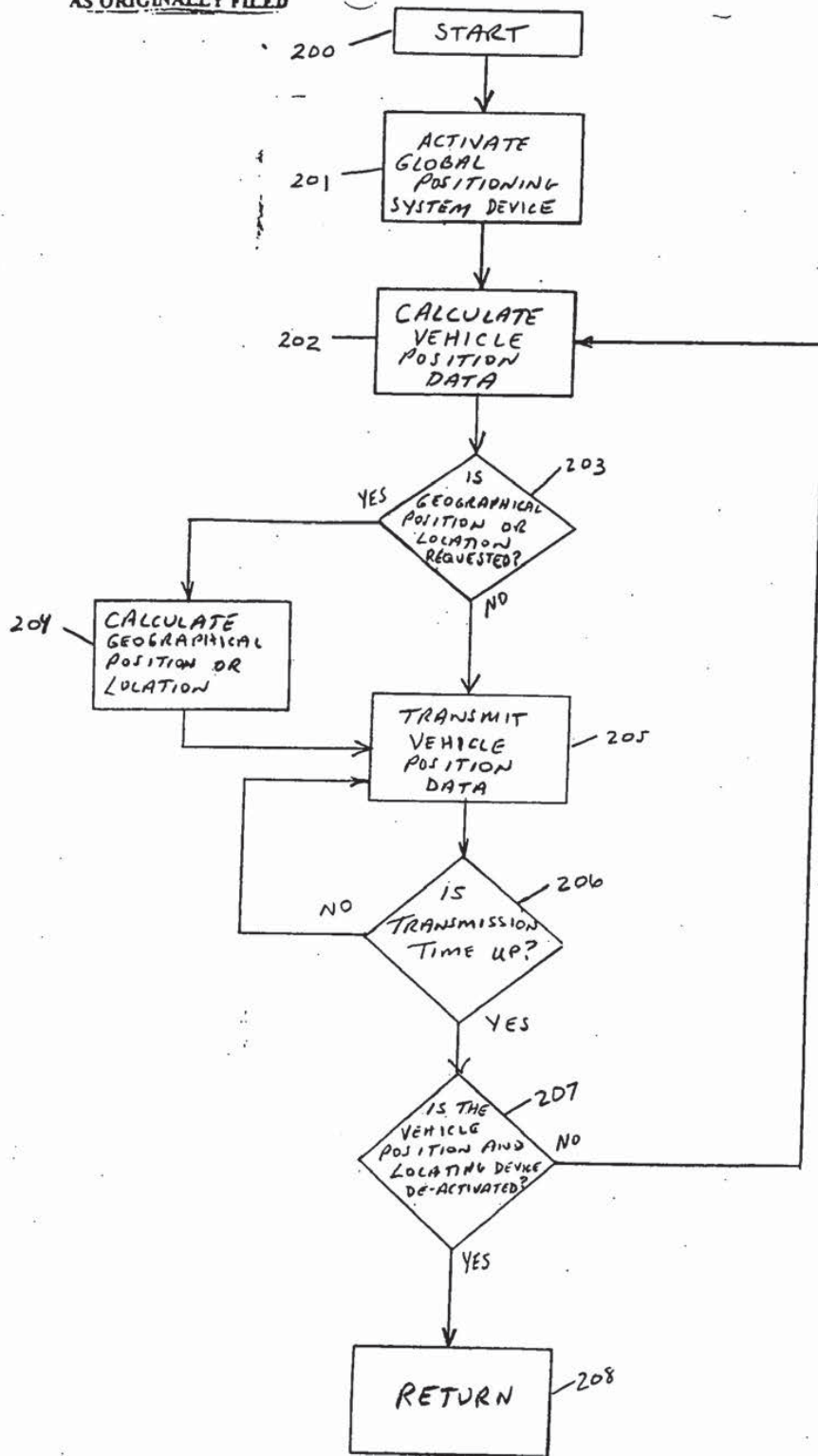


FIGURE 7

066200 5062260

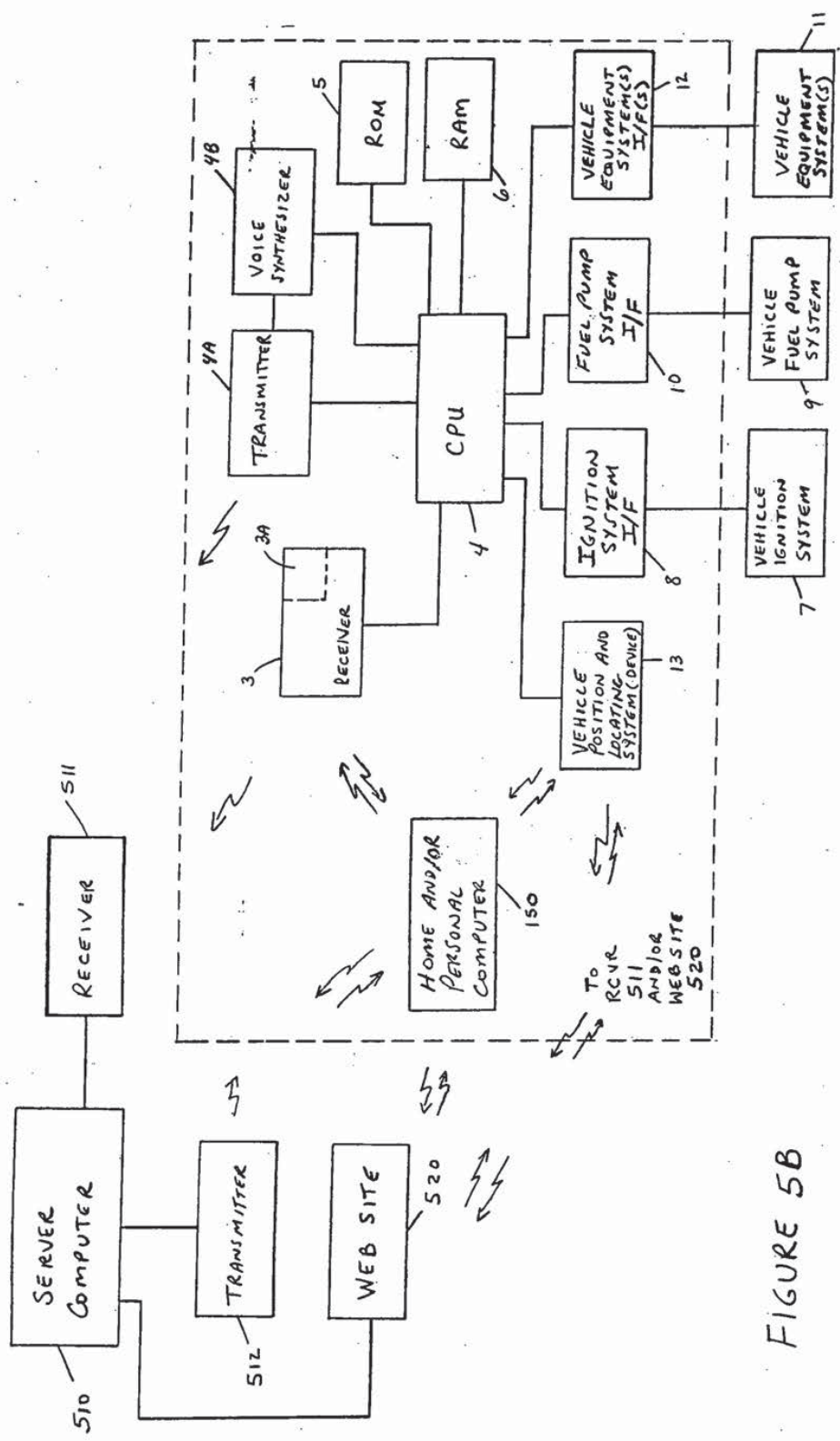


FIGURE 5B

00000000000000000000

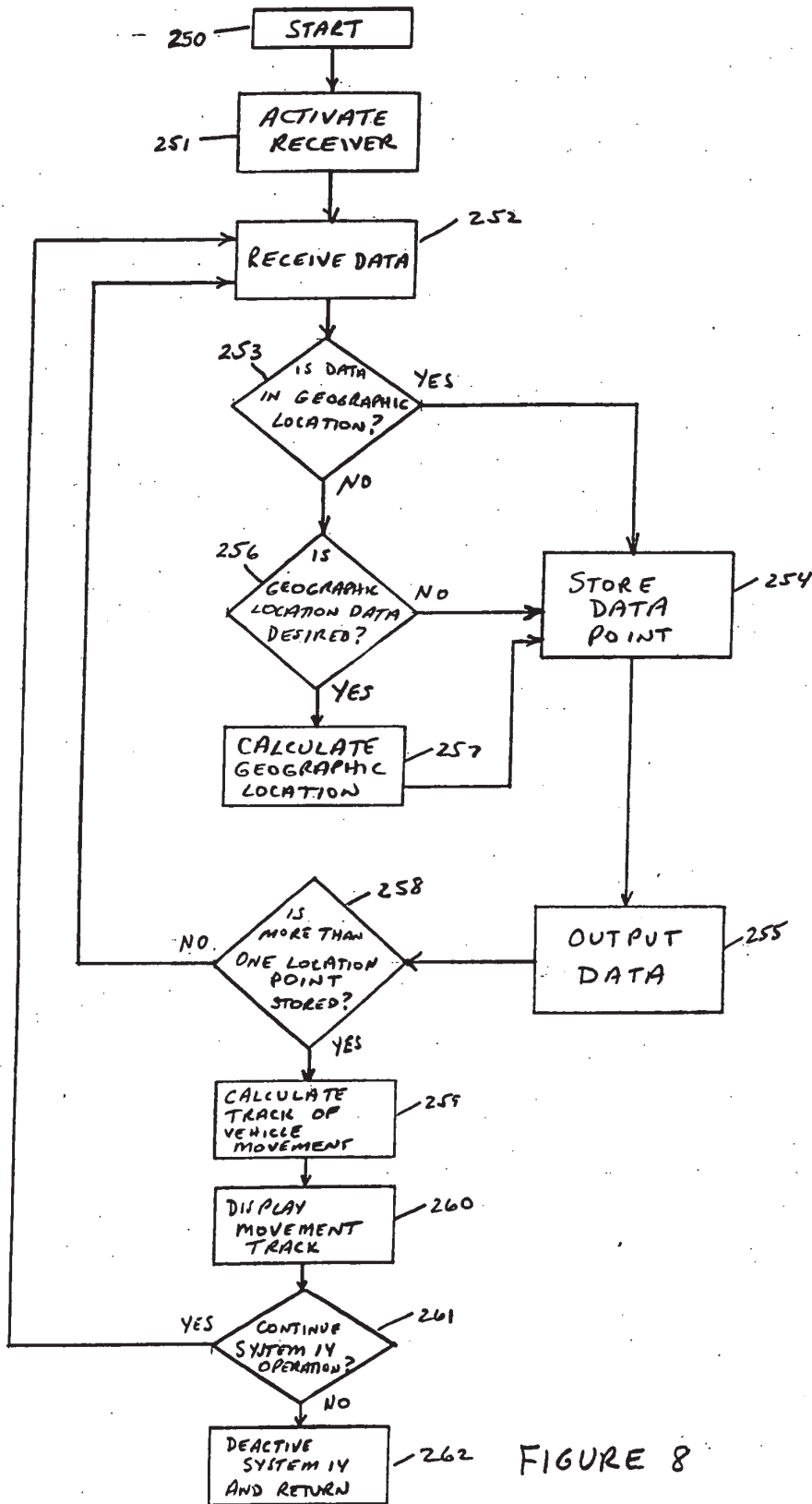


FIGURE 8

66620 5662260

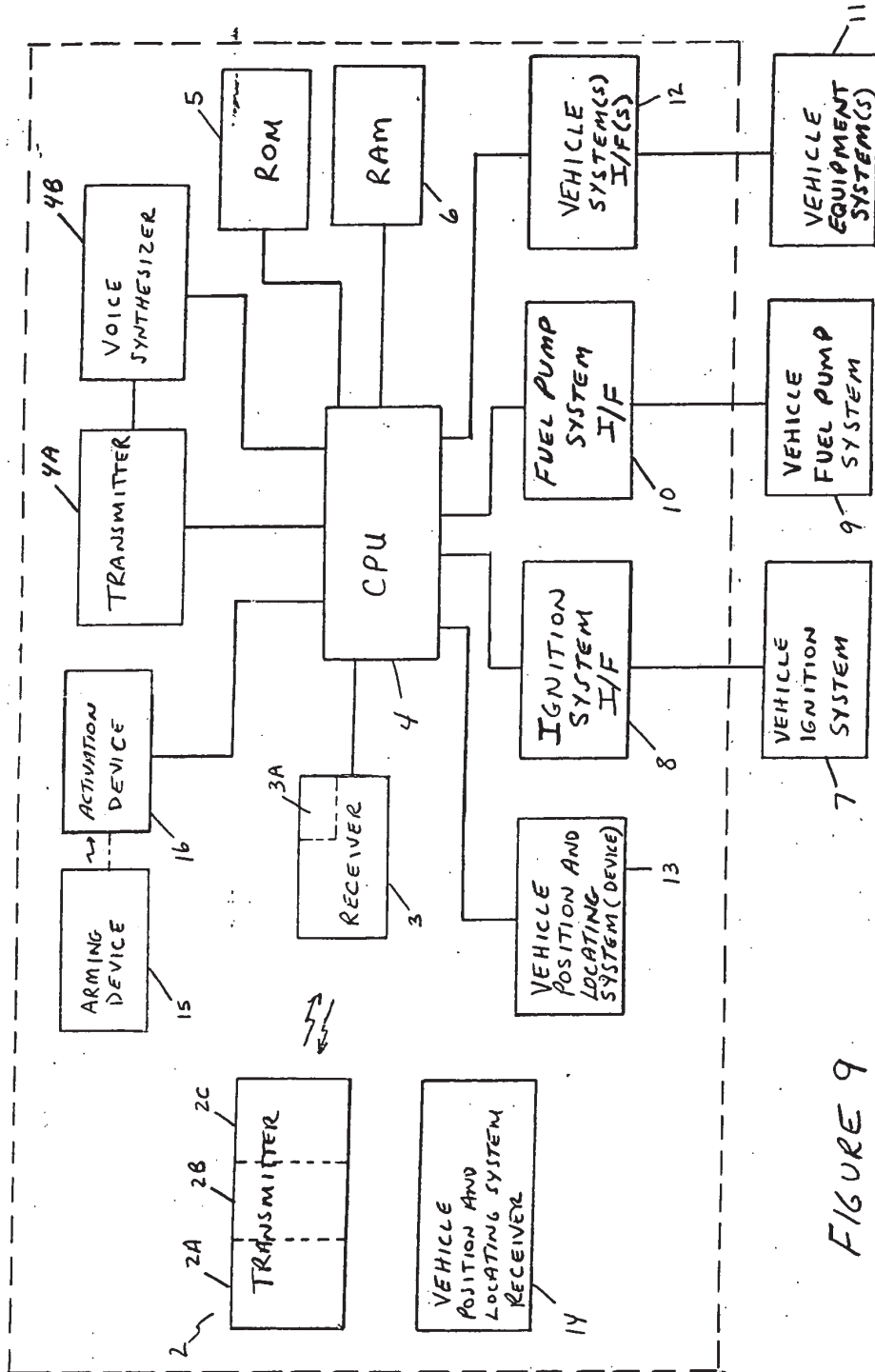


FIGURE 9

666220" SE642260

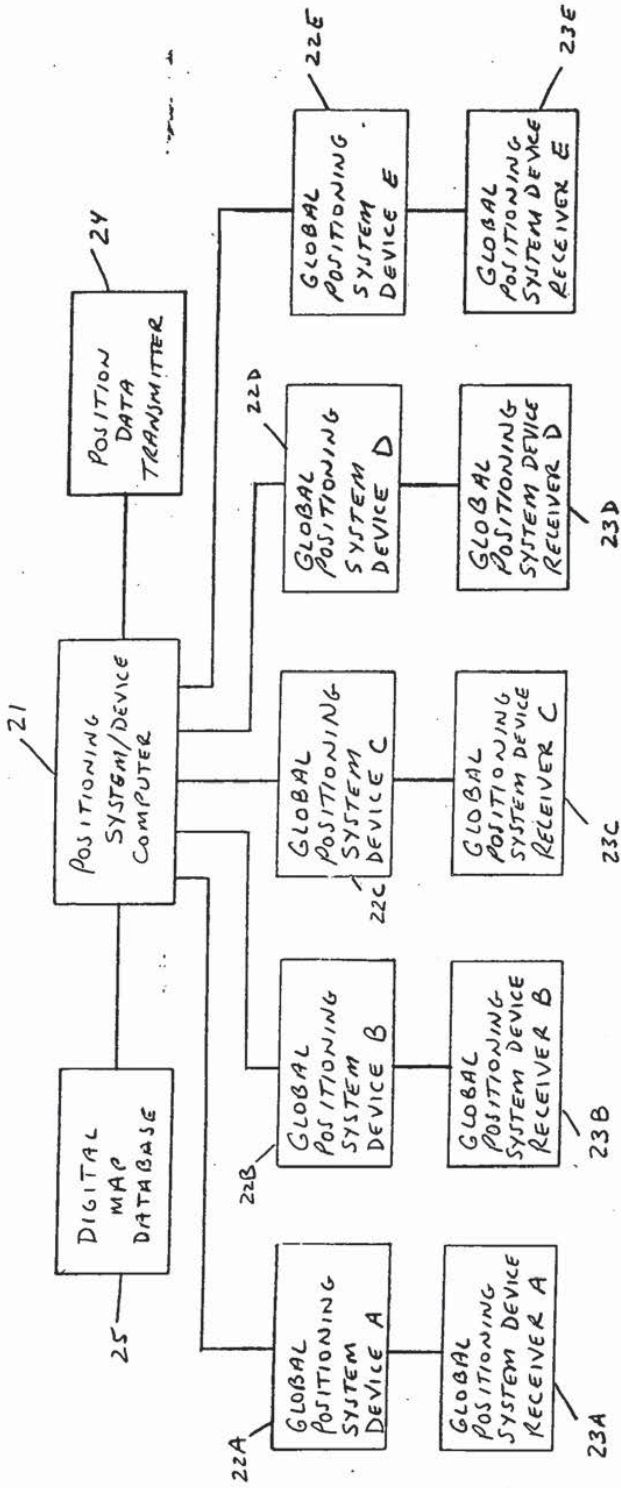


FIGURE 10

130

66000562260

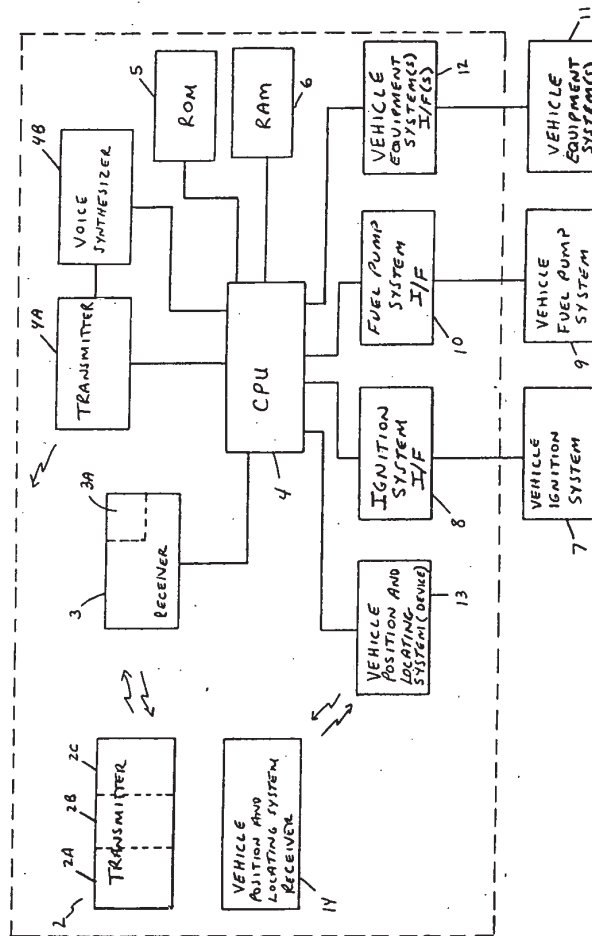
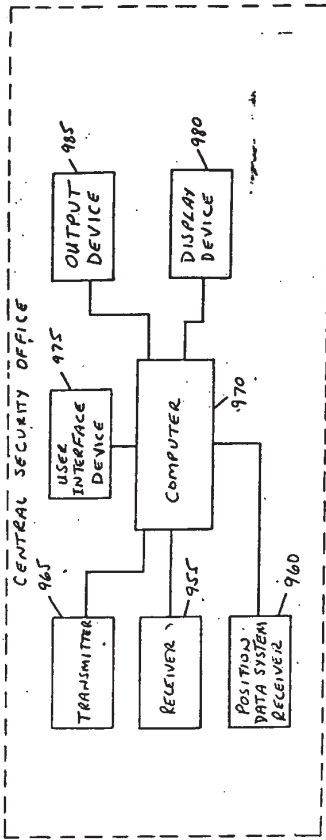


FIGURE 11A